



Chipsmall Limited consists of a professional team with an average of over 10 year of expertise in the distribution of electronic components. Based in Hongkong, we have already established firm and mutual-benefit business relationships with customers from,Europe,America and south Asia,supplying obsolete and hard-to-find components to meet their specific needs.

With the principle of “Quality Parts,Customers Priority,Honest Operation,and Considerate Service”,our business mainly focus on the distribution of electronic components. Line cards we deal with include Microchip,ALPS,ROHM,Xilinx,Pulse,ON,Everlight and Freescale. Main products comprise IC,Modules,Potentiometer,IC Socket,Relay,Connector.Our parts cover such applications as commercial,industrial, and automotives areas.

We are looking forward to setting up business relationship with you and hope to provide you with the best service and solution. Let us make a better world for our industry!



## Contact us

Tel: +86-755-8981 8866 Fax: +86-755-8427 6832

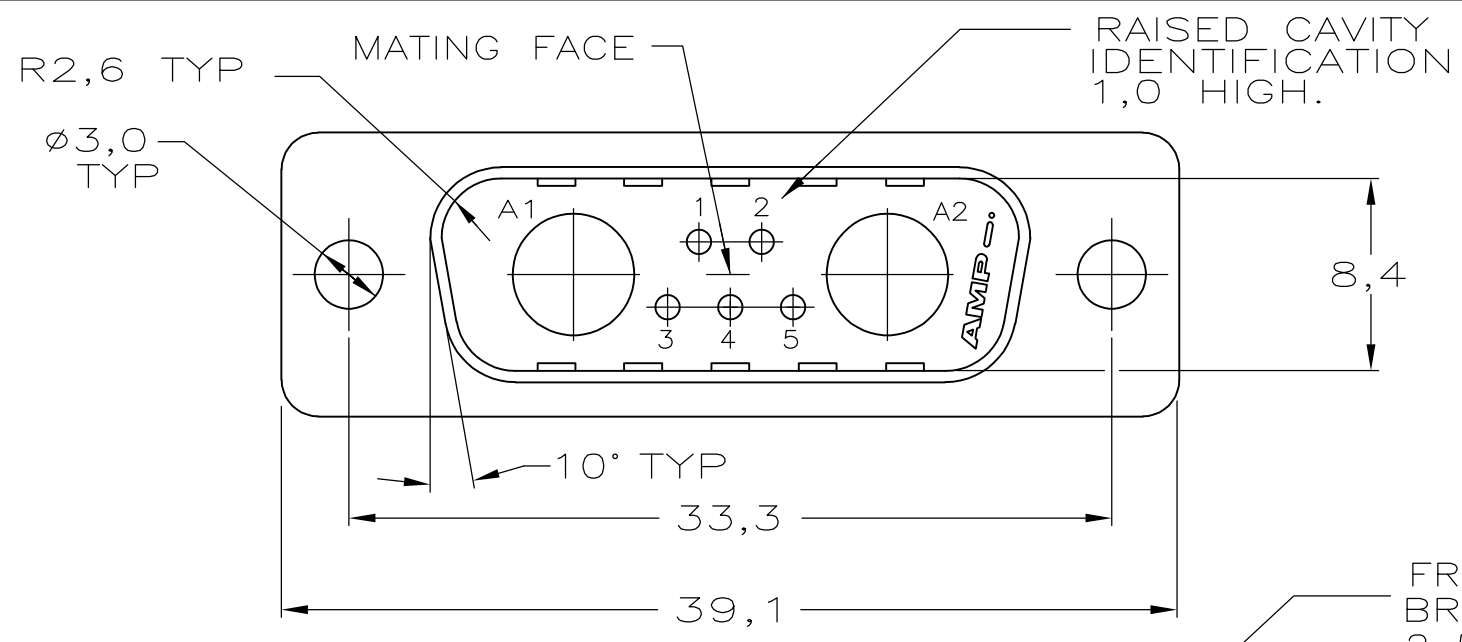
Email & Skype: info@chipsmall.com Web: www.chipsmall.com

Address: A1208, Overseas Decoration Building, #122 Zhenhua RD., Futian, Shenzhen, China



THIS DRAWING IS UNPUBLISHED. RELEASED FOR PUBLICATION  
 © COPYRIGHT - By - ALL RIGHTS RESERVED.

LOC	DIST	REVISIONS					
GP	00	P	LTR	DESCRIPTION	DATE	DWN	APVD
		D		REVISED PER ECO-16-000387	04FEB2016	AP	DG

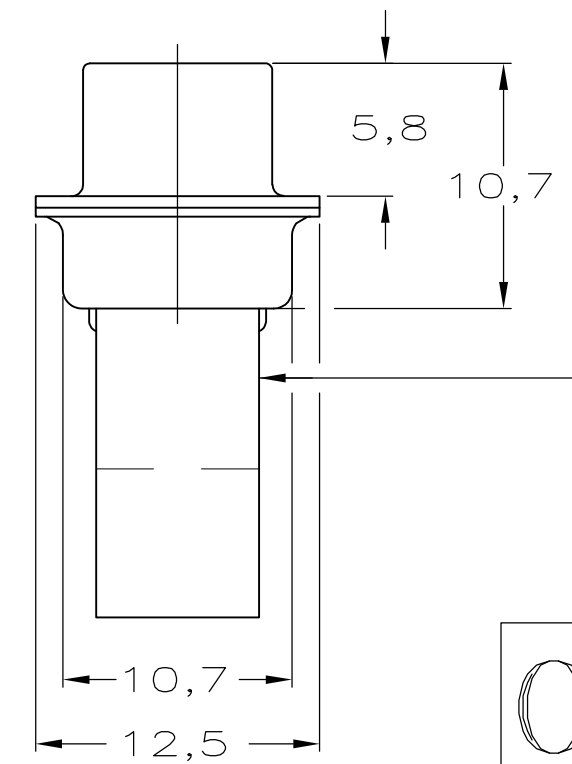
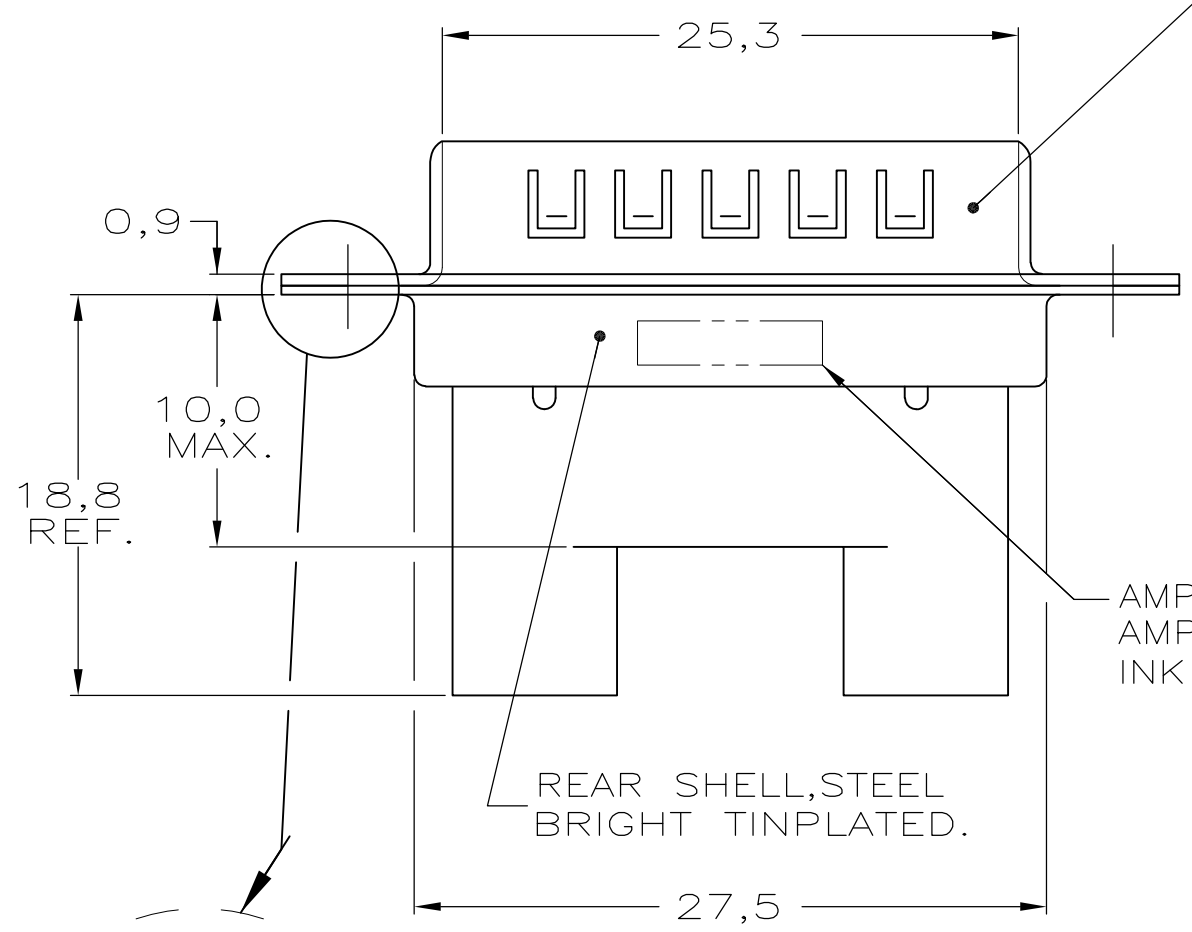


- THIS PLUG ACCEPTS SIZE 20 SIGNAL PIN-CONTACTS AND SIZE 8 POWER/COAX PIN-CONTACTS.
- FOLLOWING INSERTION/REMOVAL TOOLS ARE RECOMMENDED FOR USE WITH THESE CONNECTORS,  
 SIGNAL CONTACTS:  

32-28AWG/28-24AWG CONT's	24-20AWG CONTACTS
91067-3 INSERTION/REMOVAL	91067-2 INSERTION/REMOVAL
726363-1 INSERTION ONLY	726363-1 INSERTION ONLY
	726364-1 REMOVAL ONLY

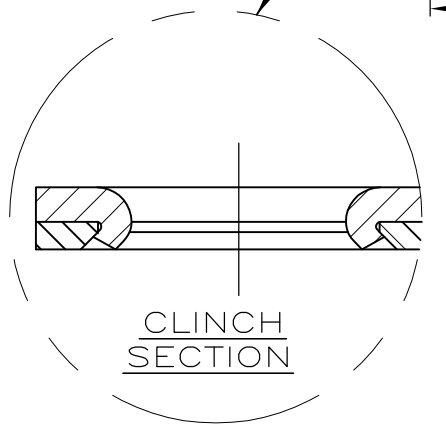
 POWER/COAX CONTACTS : 58095-1 REMOVAL ONLY

FRONT SHELL STEEL,  
 BRIGHT TINPLATED WITH  
 2x5 GROUNDING FINGERS ON 3,8 PITCH;



INSERTS NYLON  
 GLASS-FILLED  
 SELF-EXTINGUISHING  
 COLOR: BLACK

**OBSOLETE**



THIS DRAWING IS A CONTROLLED DOCUMENT.		DWN	11SEP1989	TE Connectivity	
		L. v. d. HEYDEN			
		CHK	11SEP1989		
		C. v. TILBURG			
		APVD	11SEP1989	NAME	
		L. v. SOEST		HDP-20 PLUG CONNECTOR, 7C2 , MIXED ,HIGH PROFILE	
DIMENSIONS: mm		TOLERANCES UNLESS OTHERWISE SPECIFIED:		PRODUCT SPEC	
		0 PLC	± -	APPLICATION SPEC	
		1 PLC	± -		
		2 PLC	± -		
		3 PLC	± -		
		4 PLC	± -		
		ANGLES	± -		
MATERIAL		FINISH		SIZE	RESTRICTED TO
				A3	-
				CAGE CODE	DRAWING NO
				00779	C-216595
				WEIGHT	
				CUSTOMER DRAWING	SCALE
					NTS
				SHEET	1 OF 1
				REV	D