



Chipsmall Limited consists of a professional team with an average of over 10 year of expertise in the distribution of electronic components. Based in Hongkong, we have already established firm and mutual-benefit business relationships with customers from,Europe,America and south Asia,supplying obsolete and hard-to-find components to meet their specific needs.

With the principle of "Quality Parts,Customers Priority,Honest Operation,and Considerate Service",our business mainly focus on the distribution of electronic components. Line cards we deal with include Microchip,ALPS,ROHM,Xilinx,Pulse,ON,Everlight and Freescale. Main products comprise IC,Modules,Potentiometer,IC Socket,Relay,Connector.Our parts cover such applications as commercial,industrial, and automotives areas.

We are looking forward to setting up business relationship with you and hope to provide you with the best service and solution. Let us make a better world for our industry!



Contact us

Tel: +86-755-8981 8866 Fax: +86-755-8427 6832

Email & Skype: info@chipsmall.com Web: www.chipsmall.com

Address: A1208, Overseas Decoration Building, #122 Zhenhua RD., Futian, Shenzhen, China



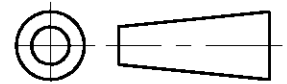
DO NOT SCALE

DIMENSIONS IN mm

METRIC

THIRD ANGLE

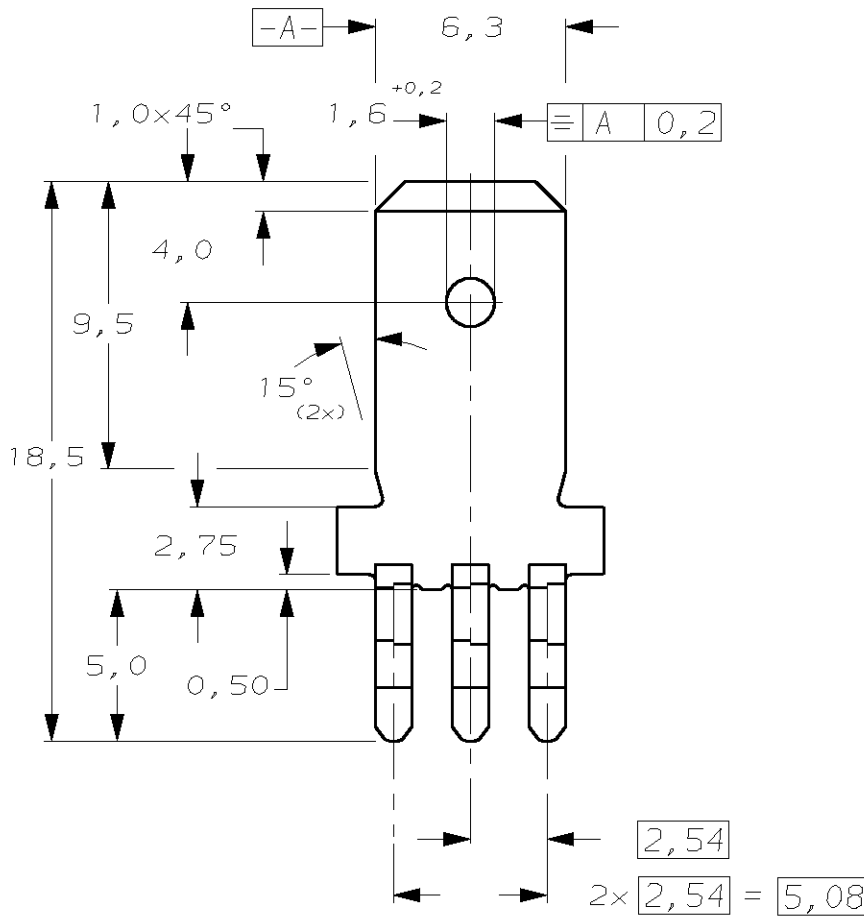
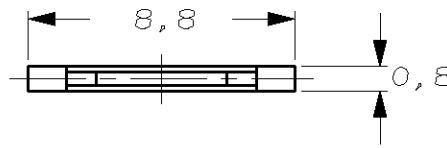
PROJECTION



P.C.B. HOLE DIM. ACTION PIN

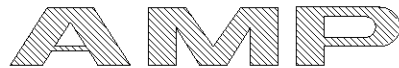
DRILLED HOLE : 1,60 ±0,025 mm
 FIN. HOLE : 1,39 to 1,54 mm
 AFTER REFLOW : 1,37 to 1,54 mm
 Cu-thks : 0,025 to 0,075 mm
 SnPb-thks : 0,004 to 0,010 mm

FOR LEADFREE PCB APPLICATIONS
 TESTS ARE NECESSARY



B1	NEW FINISH VERSION	HosseL	Bleicher	01 JUL 07	216843-3 MADE FROM 216842-5	PHOSPHORBRONZE	216843-3
B	LEADFREE PLATING, SPEC. ADAPTED; REVISION ADAPTED TO PART STATUS	MAH.	ZITZ	01 JUN 05	2,54µM MIN. SN; ALL OVER ACC. TO SPEC. 112-65-1	PHOSPHORBRONZE	216843-1
REV.	ECN-NO.	DRW.	APP.	DATE	FINISH	MATERIAL	PARTNUMBER

CUSTOMER DRAWING



AMP-HOLLAND B.V.
 's-Hertogenbosch, The Netherlands.

FOR REFERENCE ONLY
 WILL NOT BE UPDATED

THIS DRAWING IS UNPUBLISHED ~~RELEASED FOR PUBLICATION~~ = , 19-
 © COPYRIGHT 19- BY AMP-HOLLAND B.V.
 ALL INTERNATIONAL RIGHTS RESERVED.
 AMP PRODUCTS MAY BE COVERED BY U.S. AND FOREIGN PATENTS AND/OR PATENTS PENDING.

DR.	DATE	WIRE RANGE	NAME	REV. DATE
R.v.Lokven	07.12.89	-	.250'' SERIES TAB WITH ACTION PIN,	D M Y
CHK.	DATE	INSUL. RANGE	FOR POSITIVE LOCK RECEPTACLE.	02 23 00
R.v.Lokven	03.01.90	-	(1,6-3,2 P.C.BOARD THICKNESS.)	
APP.	DATE	SIZE	SHEET	DWG. No.
L.v.Soest	03.01.90	A4	1 OF 1	216843
				REV. LTR.
				B1