



Chipsmall Limited consists of a professional team with an average of over 10 year of expertise in the distribution of electronic components. Based in Hongkong, we have already established firm and mutual-benefit business relationships with customers from,Europe,America and south Asia,supplying obsolete and hard-to-find components to meet their specific needs.

With the principle of “Quality Parts,Customers Priority,Honest Operation,and Considerate Service”,our business mainly focus on the distribution of electronic components. Line cards we deal with include Microchip,ALPS,ROHM,Xilinx,Pulse,ON,Everlight and Freescale. Main products comprise IC,Modules,Potentiometer,IC Socket,Relay,Connector.Our parts cover such applications as commercial,industrial, and automotives areas.

We are looking forward to setting up business relationship with you and hope to provide you with the best service and solution. Let us make a better world for our industry!



## Contact us

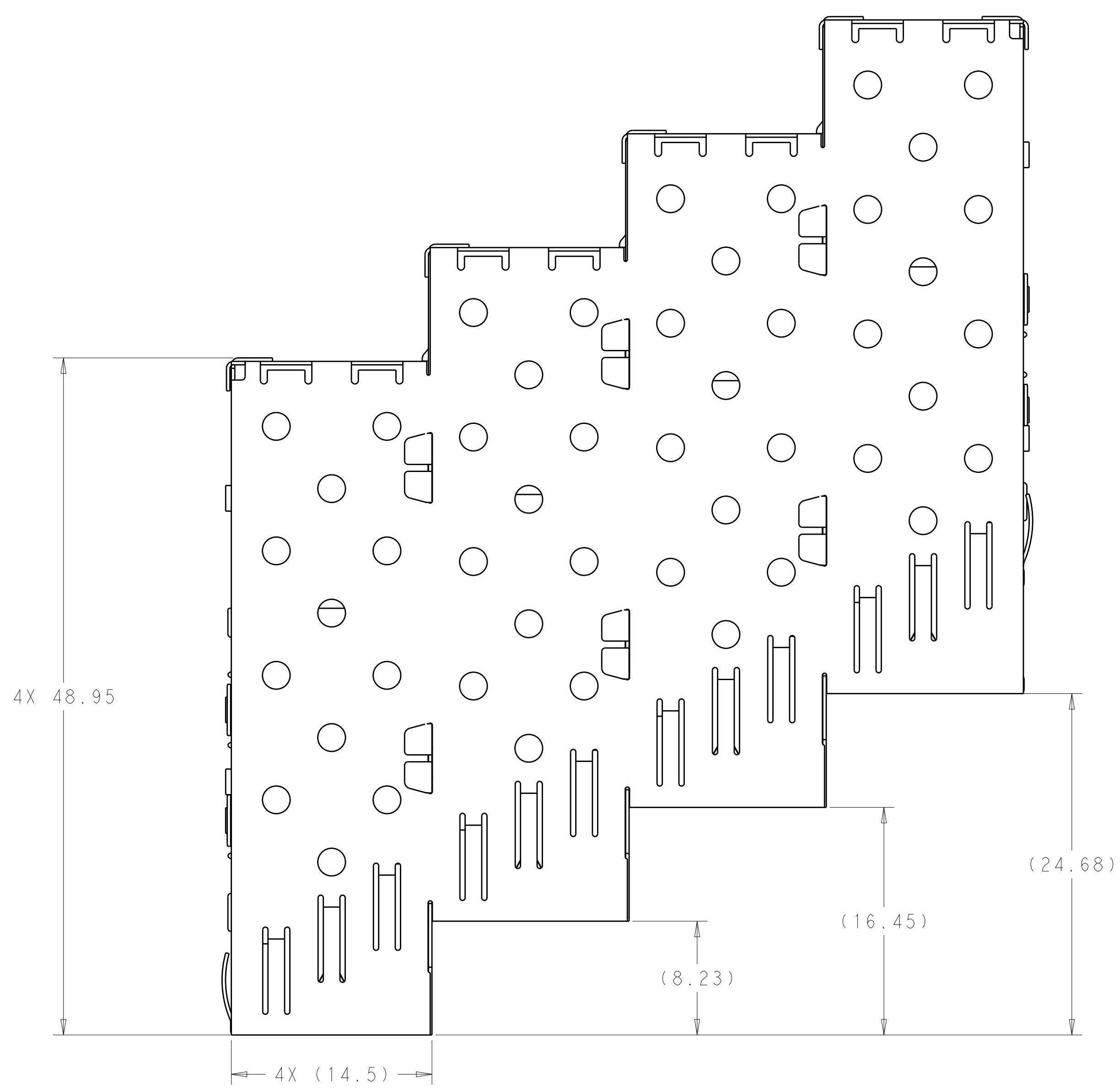
Tel: +86-755-8981 8866 Fax: +86-755-8427 6832

Email & Skype: info@chipsmall.com Web: www.chipsmall.com

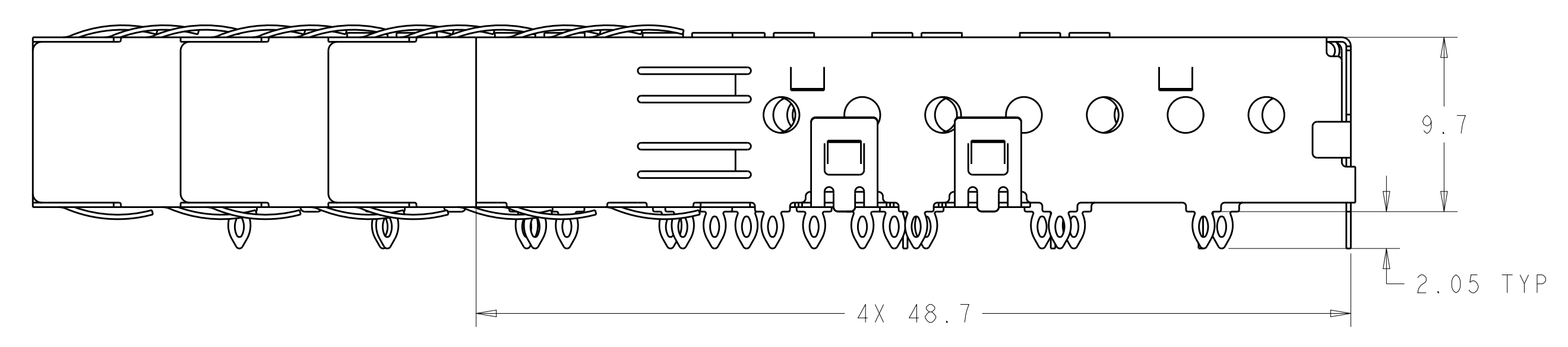
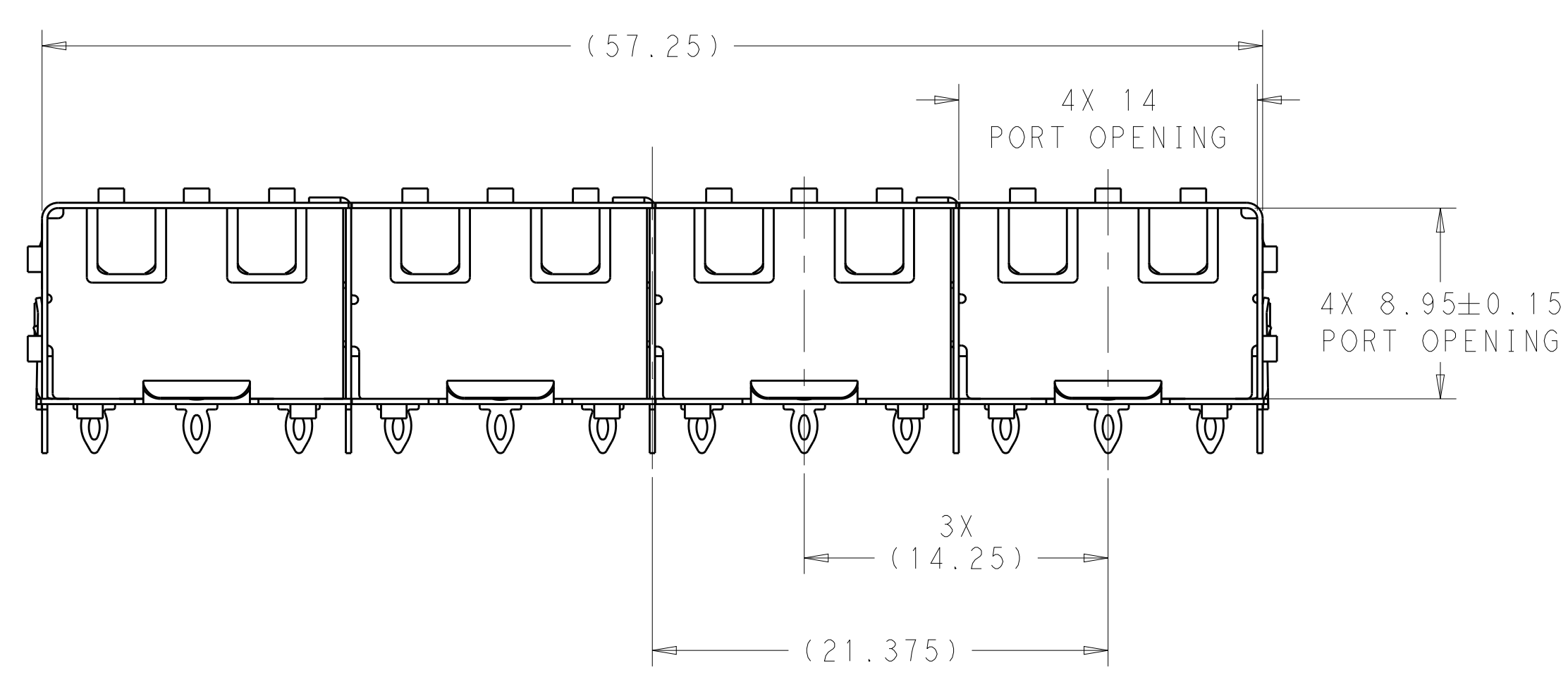
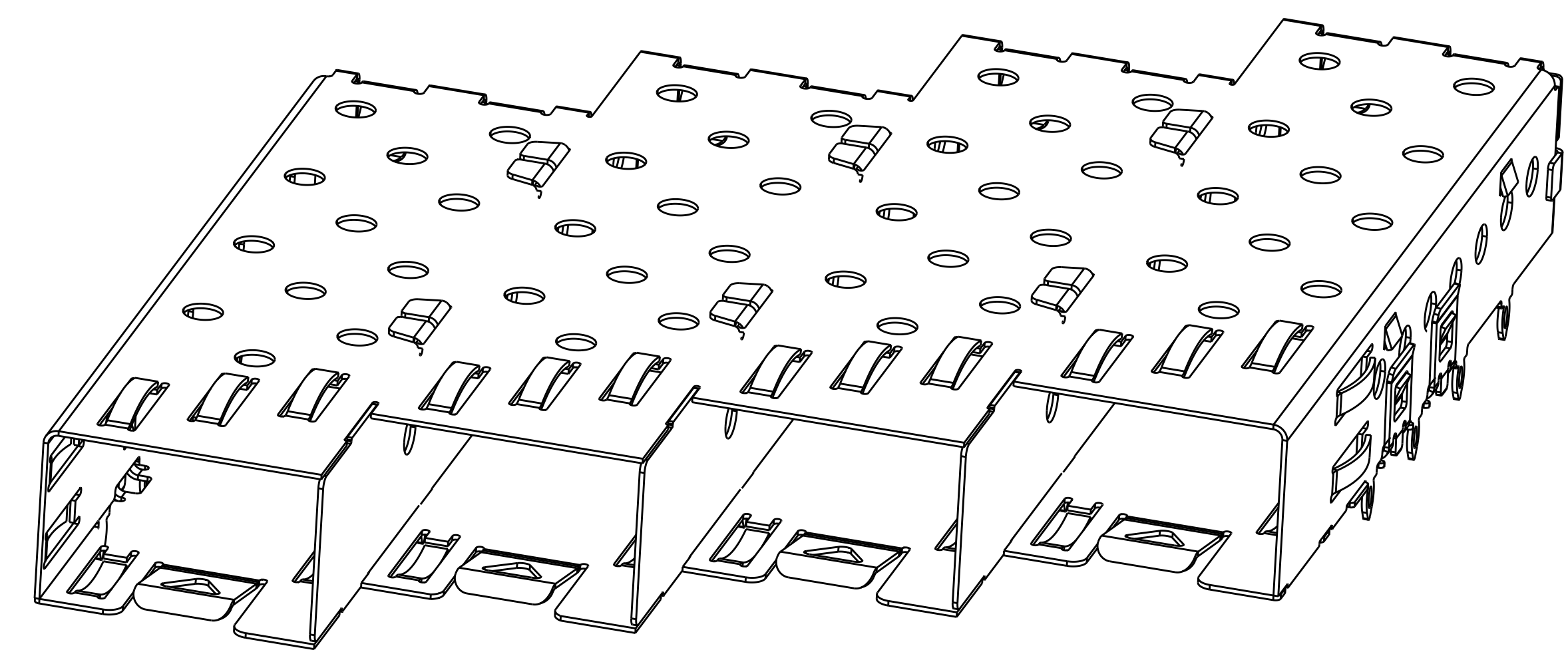
Address: A1208, Overseas Decoration Building, #122 Zhenhua RD., Futian, Shenzhen, China



LOC		DIST		REVISONS			
P	LTN	DESCRIPTION	DATE	DWN	APVD		
A		RELEASED	25FEB2016	JW	SH		



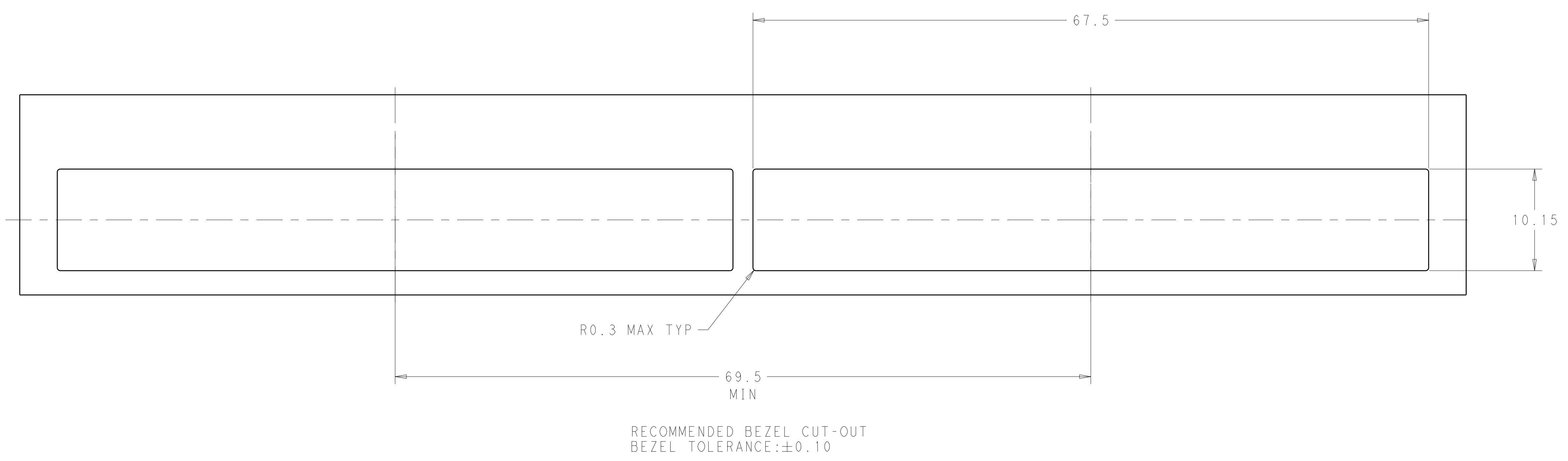
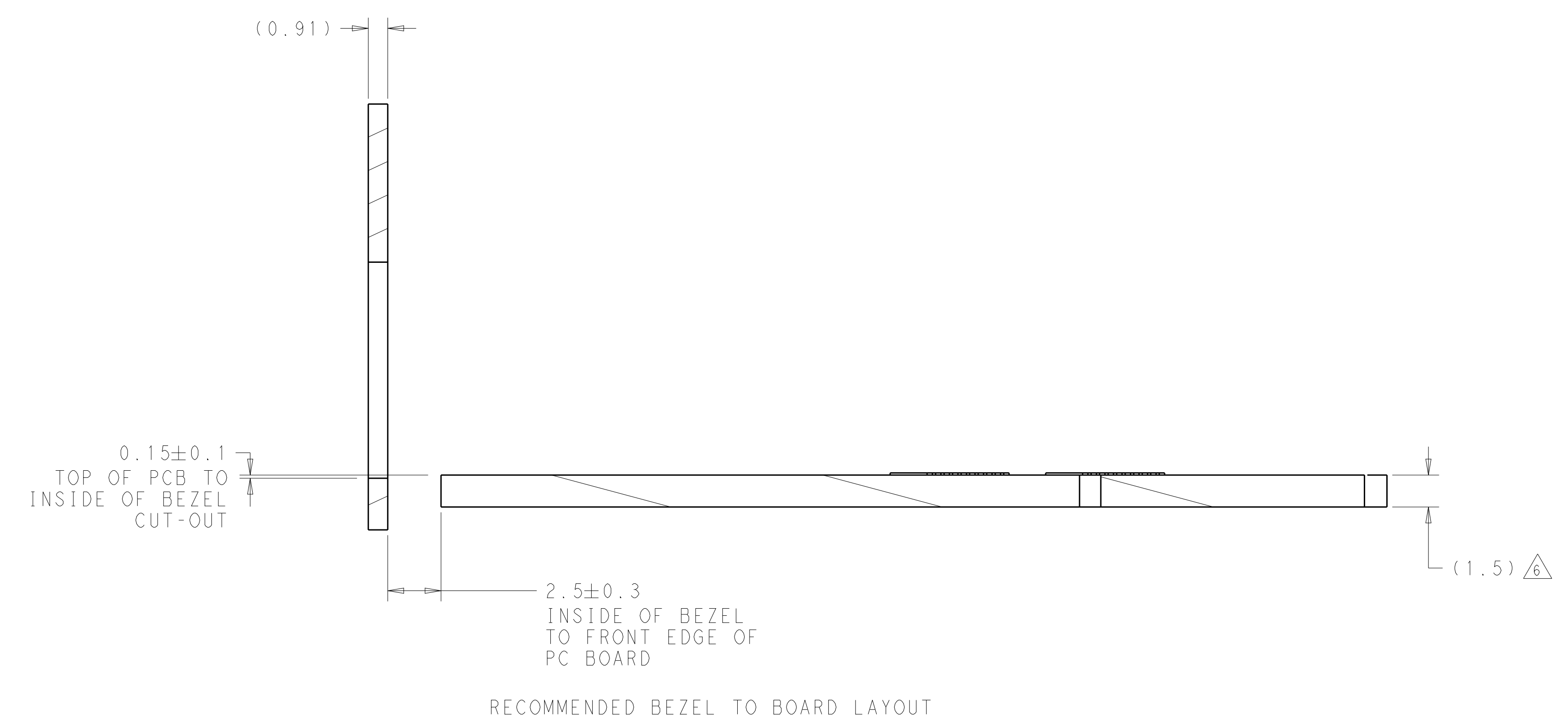
- 1 MATERIAL: 0.25mm THICK NICKEL SILVER ALLOY.
- 2 DATUM AND BASIC DIMENSIONS ESTABLISHED BY THE CUSTOMERS.
- 3. MATES WITH MSA COMPLIANT TRANSIEVERS.
- 4 PADS AND VIAS CHASSIS GROUND.
- 5 REFERENCE APPLICATION SPEC 114-13120, HOLE A, FOR RECOMMENDED DRILL HOLE DIAMETER AND PLATING THICKNESS.
- 6 MINIMUM PCB THICKNESS:  
SINGLE SIDED = 1.5mm



2170167-1  
 PART NO.

THIS DRAWING IS A CONTROLLED DOCUMENT.		DWN: JASON YANG 08NOV2011	TE Connectivity SFP, 1X4 CAGE ASSEMBLY, 30 DEGREE, PRESS FIT
DIMENSIONS:		CHK: ALEX CAI 08NOV2011	
TOLERANCES UNLESS OTHERWISE SPECIFIED:		APVD: ALEX CAI 08NOV2011	
mm		NAME: 108-1950	
0 PLC	±0.2	PRODUCT SPEC	SIZE: CAGE CODE DRAWING NO
1 PLC	±0.2	APPLICATION SPEC	RESTRICTED TO
2 PLC	±0.2	114-13120	A100779C=2170167
3 PLC	±0.2	WEIGHT	SCALE 4:1 SHEET 1 OF 3 REV A
4 PLC	±0.2	CUSTOMER DRAWING	
ANGLES	±0.2		
FINISH			

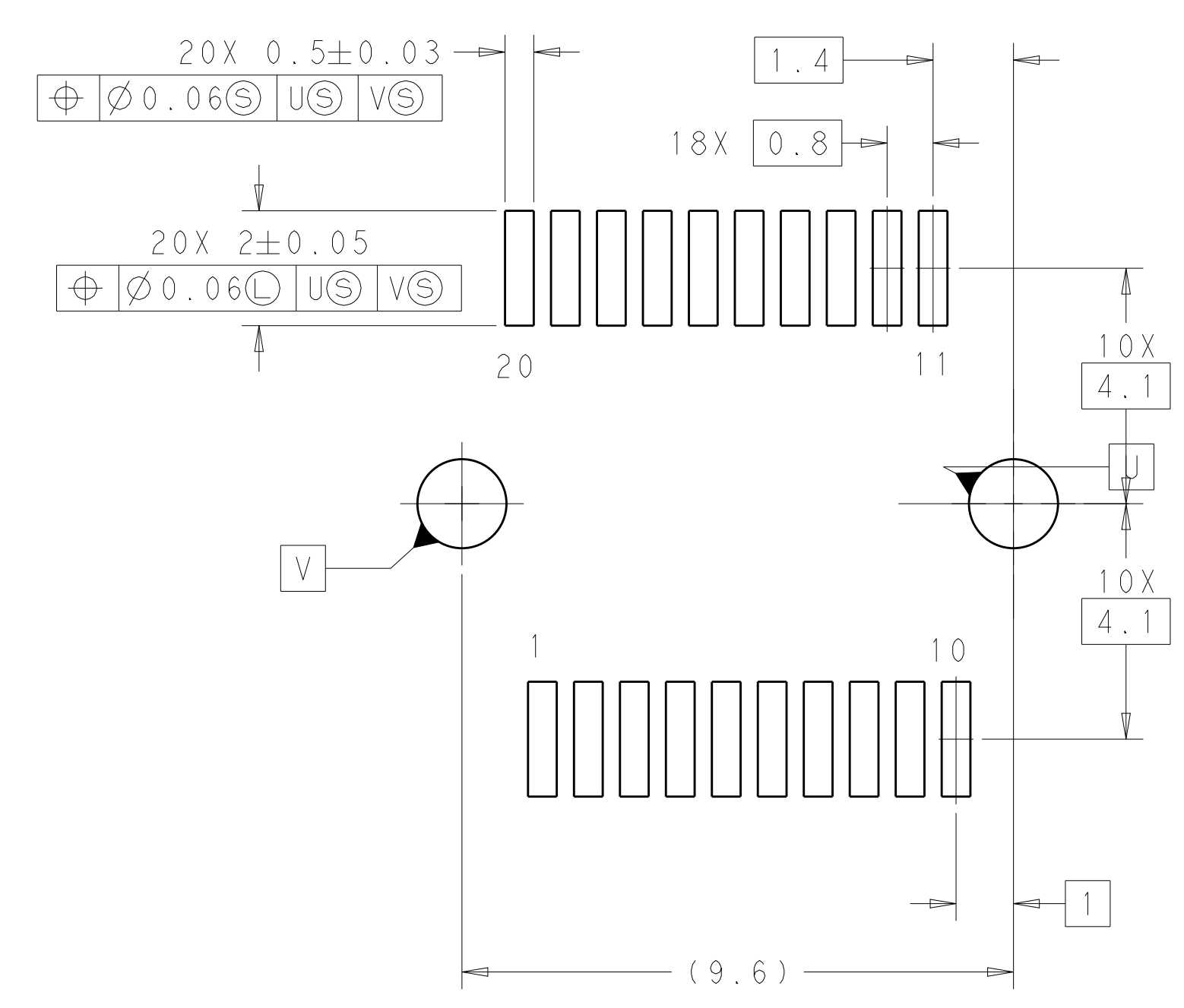
LOC		DIST		REVISIONS			
GP	00	P	LTN	DESCRIPTION	DATE	DMN	APVD
-	-	-	-	SEE SHEET 1	-	-	-



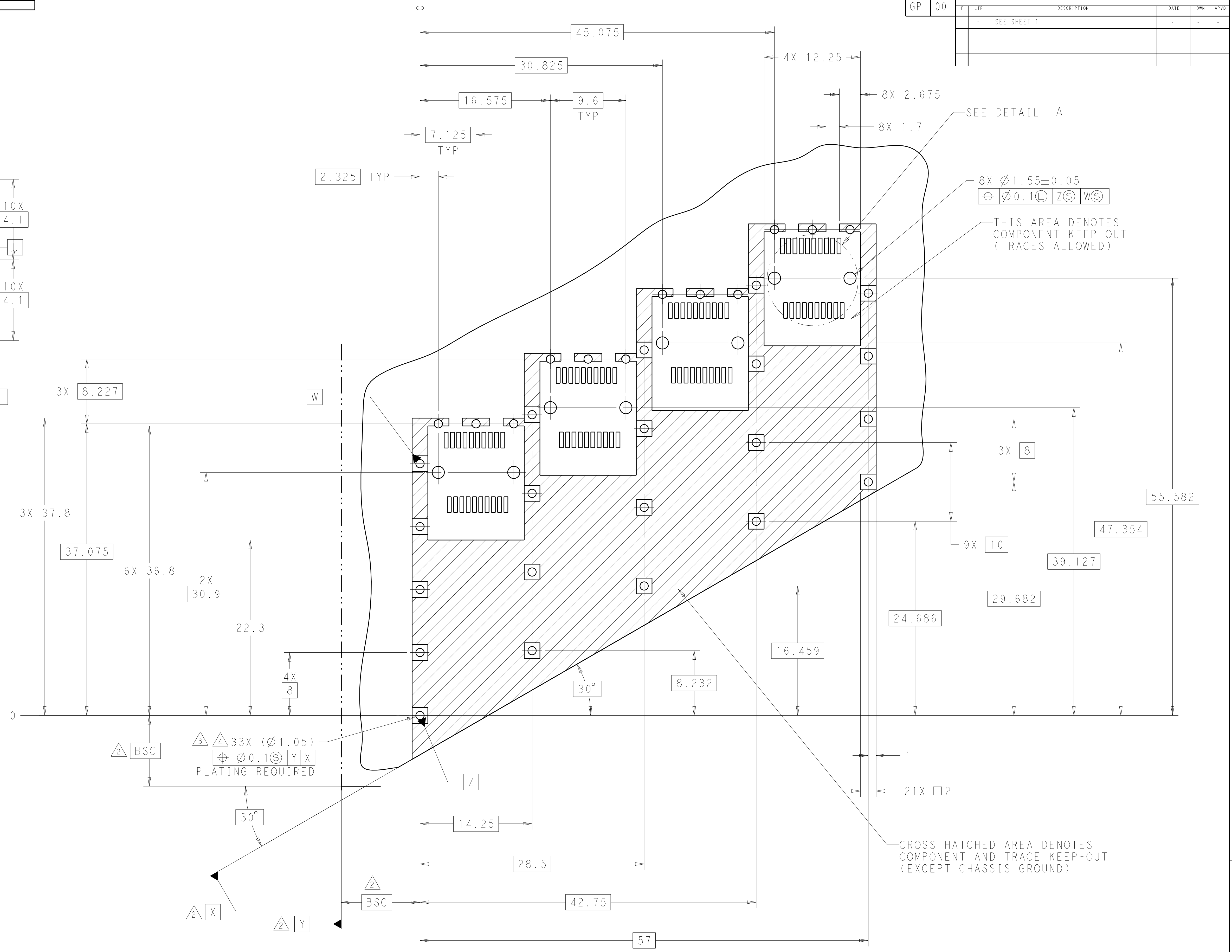
THIS DRAWING IS A CONTROLLED DOCUMENT.		DMN	JASON YANG	08NOV2011	TE Connectivity
DIMENSIONS:		CHK	ALEX CAI	08NOV2011	
mm		APVD	ALEX CAI	08NOV2011	
		TOLERANCES UNLESS OTHERWISE SPECIFIED:		NAME	
0 PLC	±0.2	PRODUCT SPEC		SFP, 1X4 CAGE ASSEMBLY,	
1 PLC	±0.2	108-1950		30 DEGREE, PRESS FIT	
2 PLC	±0.2	APPLICATION SPEC			
3 PLC	±0.2	114-13120		SIZE	
4 PLC	±0.2	WEIGHT		A100779C=2170167	
ANGLES	±0.2	CUSTOMER DRAWING		SCALE	
FINISH		SCALE		4:1	
		SHEET		2	
		OF		3	
		REV		A	



LOC		DIST		REVISIONS			
GP	00	P	LYR	DESCRIPTION	DATE	OWN	APVD
		-		SEE SHEET 1			



DETAIL A  
 RECOMMENDED PT CONNECTOR LAYOUT  
 4X INDIVIDUALLY  
 SCALE 10:1



RECOMMENDED PCB CONFIGURATION  
 WITH KEEP-OUT AREAS  
 PCB TOLERANCE: ±0.05  
 SINGLE SIDED APPLICATIONS

THIS DRAWING IS A CONTROLLED DOCUMENT.		OWN: JASON YANG 08NOV2011	TE Connectivity
DIMENSIONS: mm		CHK: ALEX CAI 08NOV2011	
TOLERANCES UNLESS OTHERWISE SPECIFIED:		APVD: ALEX CAI 08NOV2011	NAME: SFP, 1X4 CAGE ASSEMBLY, 30 DEGREE, PRESS FIT
0 PLC	±0.2	PRODUCT SPEC	108-1950
1 PLC	±0.2	APPLICATION SPEC	114-13120
2 PLC	±0.2	WEIGHT	A100779C=2170167
3 PLC	±0.2	CUSTOMER DRAWING	SCALE 4:1 SHEET 3 OF 3 REV A
4 PLC	±0.2		
ANGLES	±0.2		
FINISH			