



Chipsmall Limited consists of a professional team with an average of over 10 year of expertise in the distribution of electronic components. Based in Hongkong, we have already established firm and mutual-benefit business relationships with customers from,Europe,America and south Asia,supplying obsolete and hard-to-find components to meet their specific needs.

With the principle of “Quality Parts,Customers Priority,Honest Operation,and Considerate Service”,our business mainly focus on the distribution of electronic components. Line cards we deal with include Microchip,ALPS,ROHM,Xilinx,Pulse,ON,Everlight and Freescale. Main products comprise IC,Modules,Potentiometer,IC Socket,Relay,Connector.Our parts cover such applications as commercial,industrial, and automotives areas.

We are looking forward to setting up business relationship with you and hope to provide you with the best service and solution. Let us make a better world for our industry!



Contact us

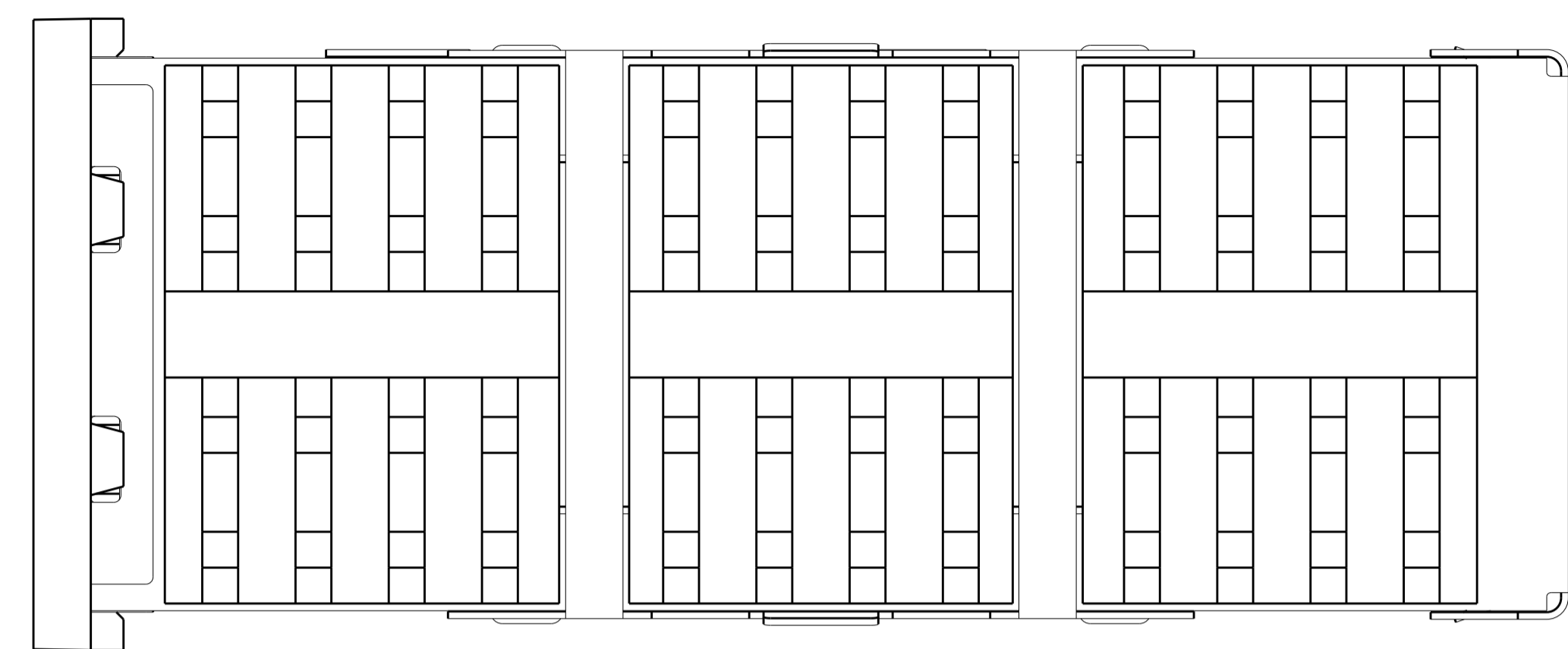
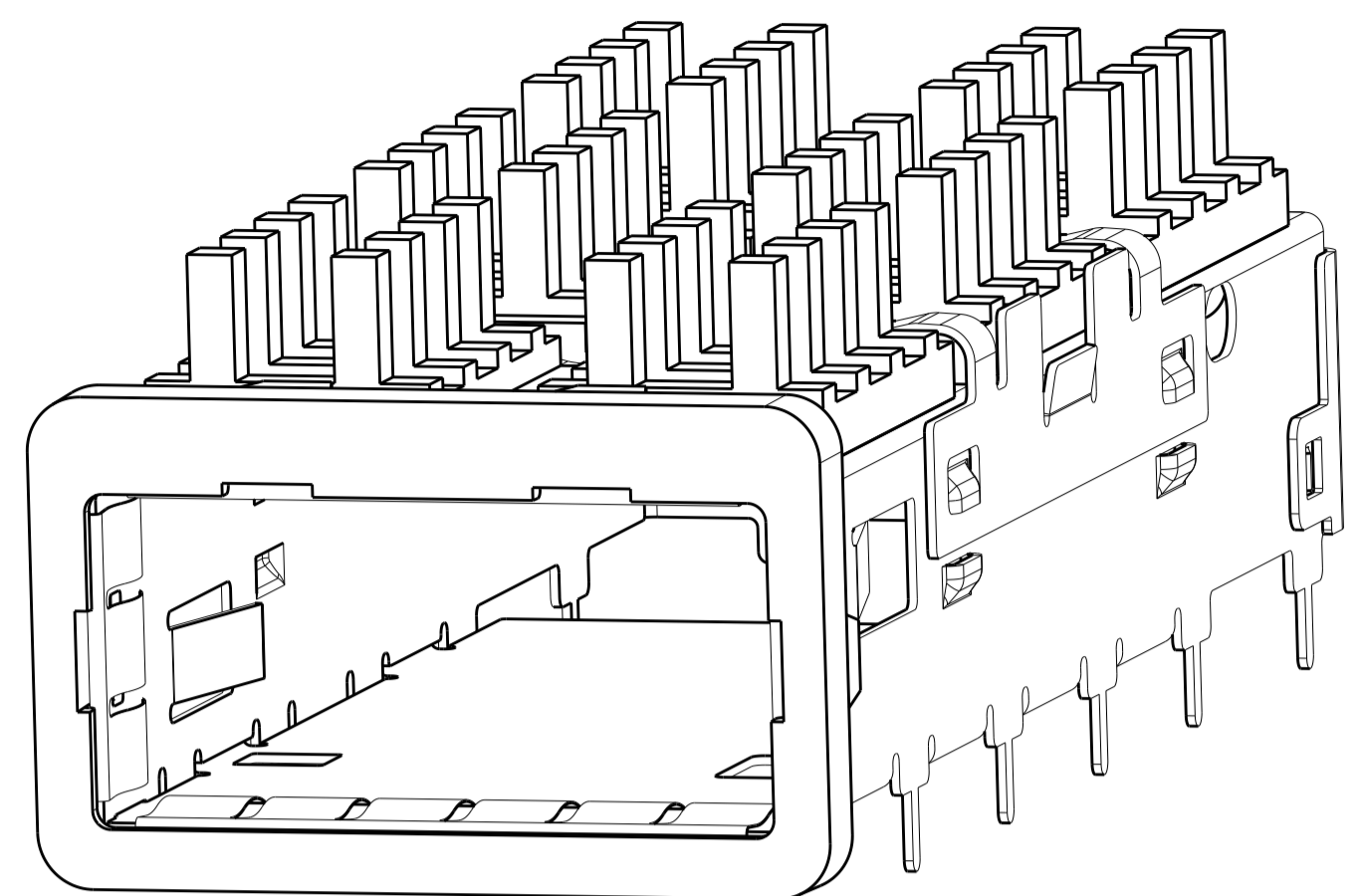
Tel: +86-755-8981 8866 Fax: +86-755-8427 6832

Email & Skype: info@chipsmall.com Web: www.chipsmall.com

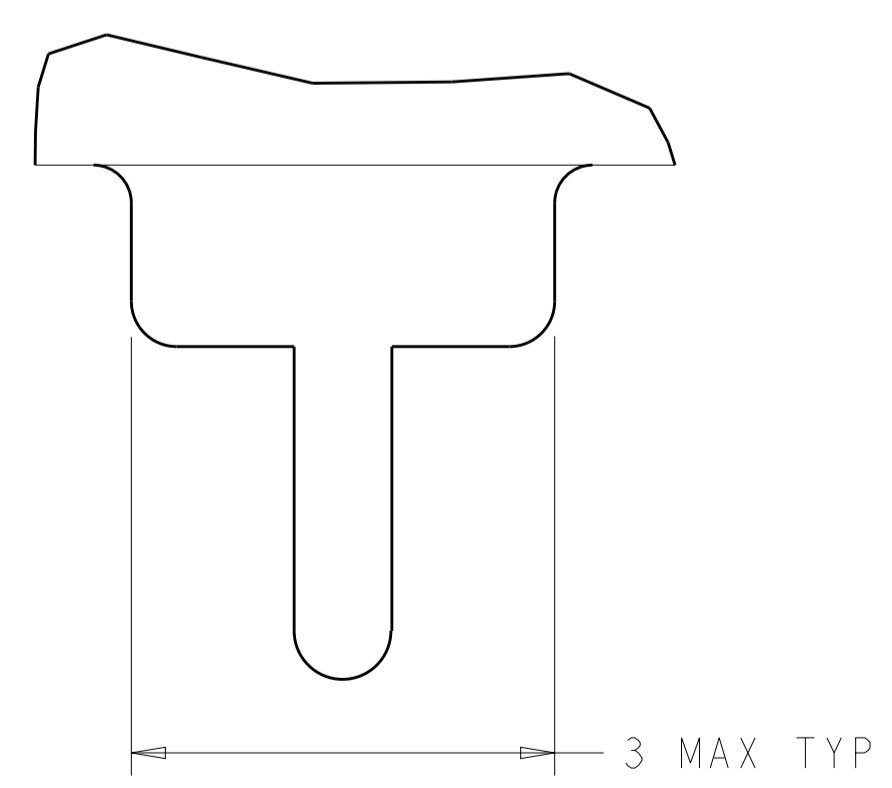
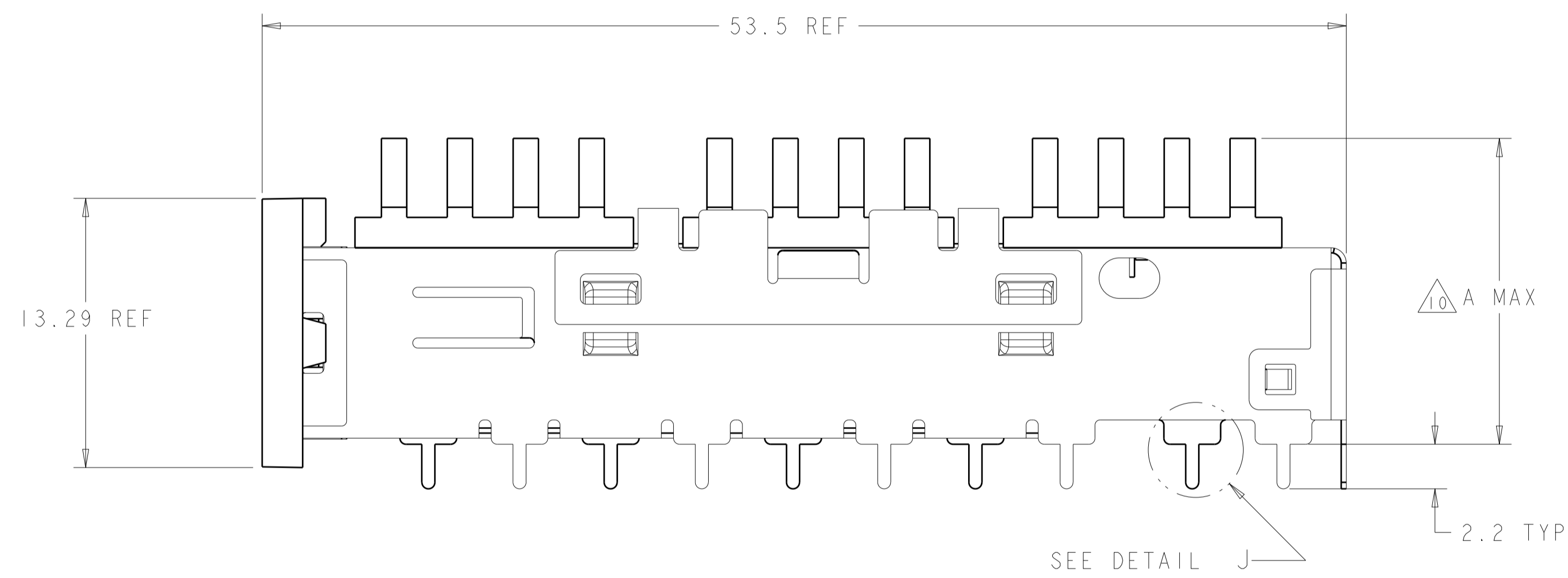
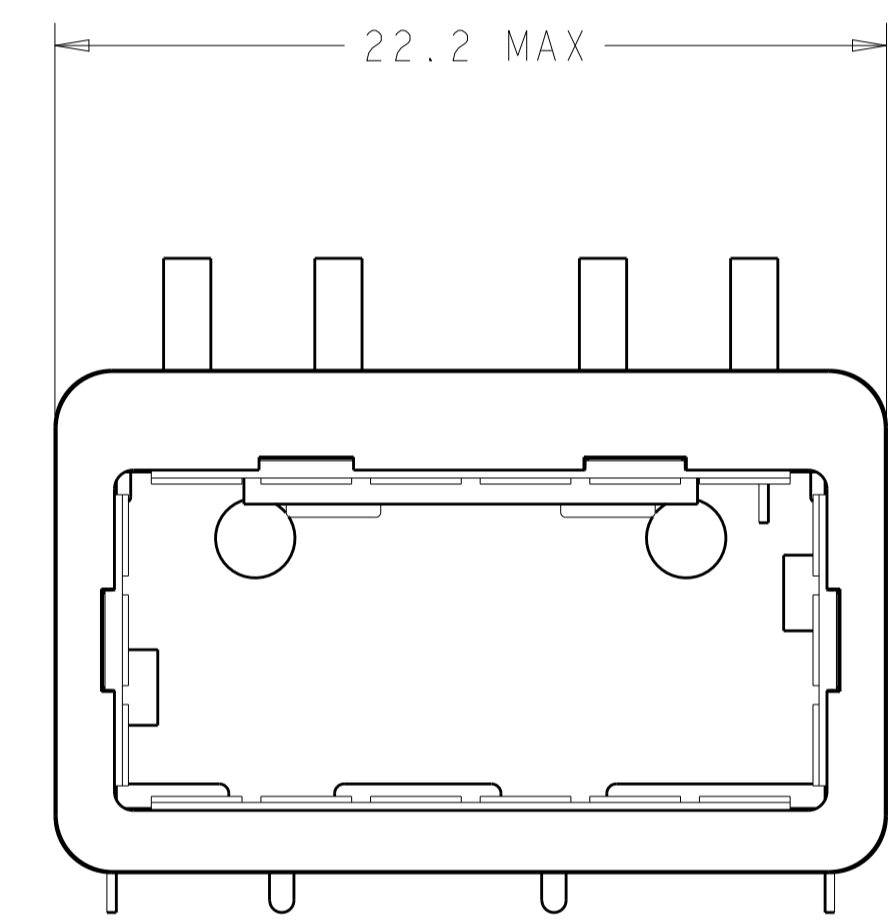
Address: A1208, Overseas Decoration Building, #122 Zhenhua RD., Futian, Shenzhen, China



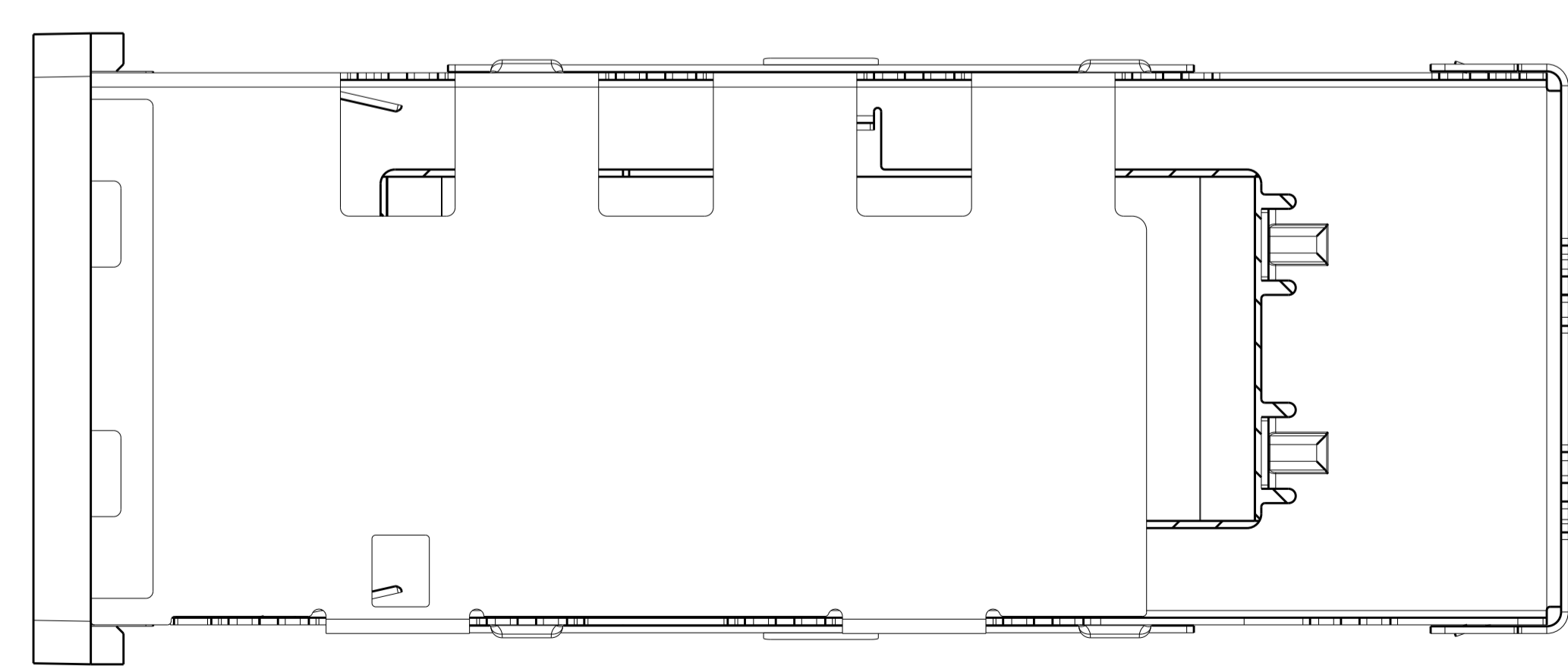
LOC	DIST	REVISIONS					
GP	00	P	LTN	DESCRIPTION	DATE	DWN	APVD
		I		PRELIMINARY	23AUG2012	DZ	JY



- △ CAGE MATERIAL: NICKEL SILVER, 0.25 THICK
 HEAT SINK MATERIAL: ALUMINUM
 HEAT SINK CLIP MATERIAL: STAINLESS STEEL
 EMI SPRING MATERIAL: COPPER ALLOY
 FRONT FLANGE MATERIAL: ZINC ALLOY
- △ MINIMUM PITCH DIMENSION.
- 3. MATES WITH QSFP MSA COMPATIBLE TRANSCEIVER.
- △ REFERENCE APPLICATION SPEC 114-13218 FOR RECOMMENDED DRILL HOLE DIAMETER AND PLATING THICKNESS.
- △ DATUMS AND BASIC DIMENSIONS ESTABLISHED BY CUSTOMER.
- △ DIMENSION C IS THE NOMINAL THICKNESS OF CUSTOMER SUPPLIED PC BOARD, SINGLE SIDED PC BOARD MINIMUM THICKNESS: 1.45
- △ HEAT SINK AND CLIP SHIPPED ASSEMBLED TO CAGE ASSEMBLY. CAGE ASSEMBLY MAY BE PRESSED INTO THE PCB AS SHIPPED.
- △ DATUM -A- IS TOP SURFACE OF HOST BOARD.
- △ SURFACE TRACES PERMITTED WITHIN THIS AREA EXCEPT WHERE CAGE STANDOFFS, SHOWN IN DETAIL J, CONTACT PC BOARD.
- △ DIMENSION APPLIES WITH MODULE INSTALLED IN THE CAGE.
- △ DATE CODE (YYWW) MARKED ON TOP OF CAGE AND CONCEALED BY HEAT SINK APPLIES TO CAGE ASSEMBLY ONLY.
- △ EMI SPRING FINISH: 2µm MIN TIN.
 FRONT FLANGE FINISH: 3µm MIN TIN OVER 1.27µm MIN NICKEL OVER 5.08µm MIN COPPER.
 HEAT SINK FINISH: 0.076µm MIN NICKEL.
- 13. PRODUCT HAS NOT COMPLETED QUALIFICATION TESTING.



DETAIL J
 SCALE 20:1

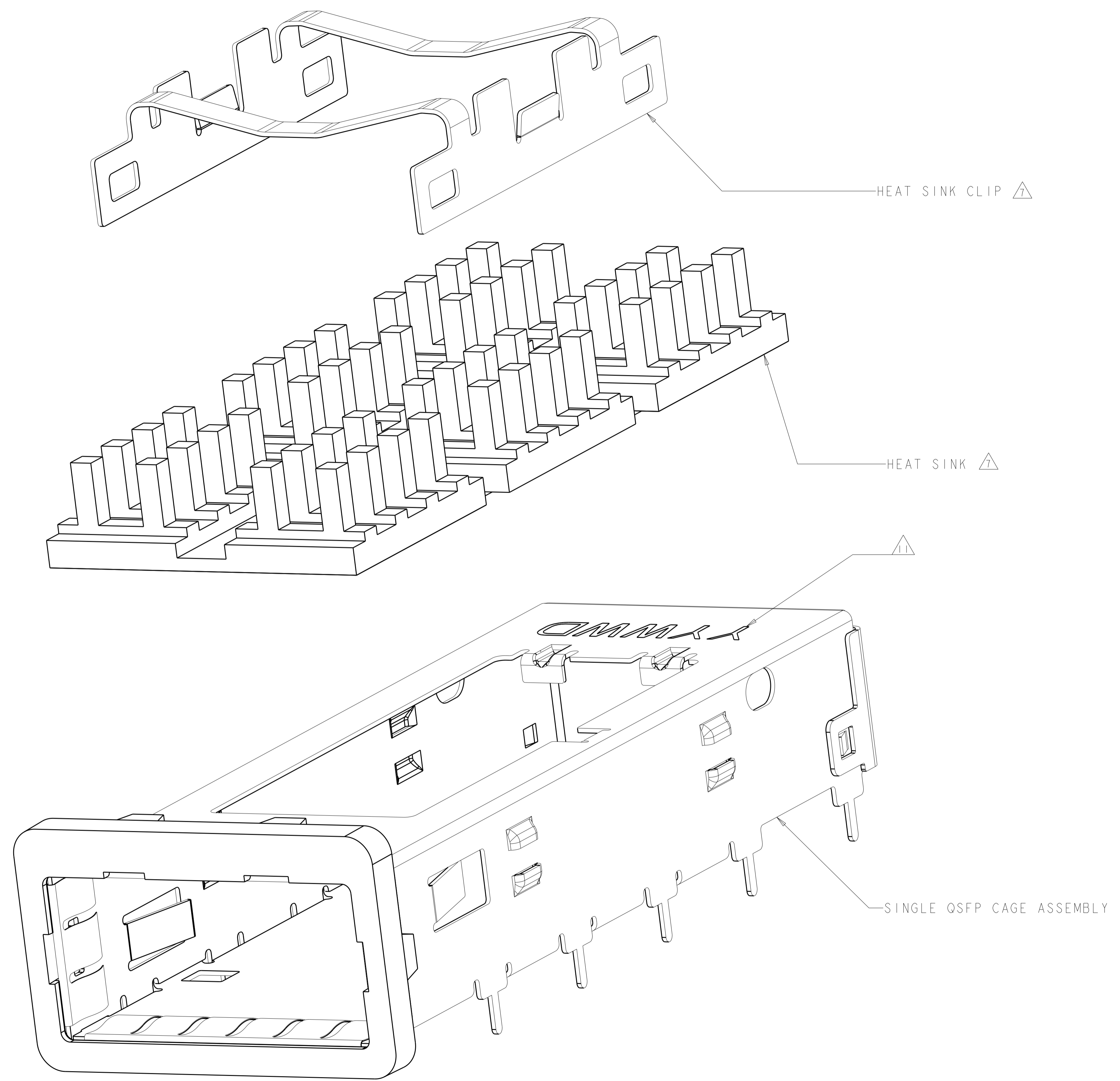


13.7	PCI HEAT SINK	2170395-1
A	DESCRIPTION	PART NUMBER
STE TE Connectivity		
NAME		CAGE ASSEMBLY, BEHIND BEZEL, QSFP WITH HEAT SINK
PRODUCT SPEC	108-2286	
APPLICATION SPEC	114-13218	
SIZE	CAGE CODE	DRAWING NO
A1	00779	2170395
Customer Drawing		SCALE 2:1 SHEET 1 OF 4 REV 1

DESIGN APPROVED THIS PRINT IS
PRELIMINARY
 TO FIRST PIECE APPROVAL
 CONTACT PRODUCT ENGINEERING
 BEFORE USING THIS PRINT

DIMENSIONS:		TOLERANCES UNLESS OTHERWISE SPECIFIED:	
mm	0 PLC	±	0.5
	2 PLC	±	0.13
	3 PLC	±	0.013
	4 PLC	±	0.0001
	ANGLES	±	0.0001
MATERIAL	FINISH	△	△

LOC	DIST	REVISIONS			
P	LTN	DESCRIPTION	DATE	DMN	APVD
GP	00	SEE SHEET 1	-	-	-

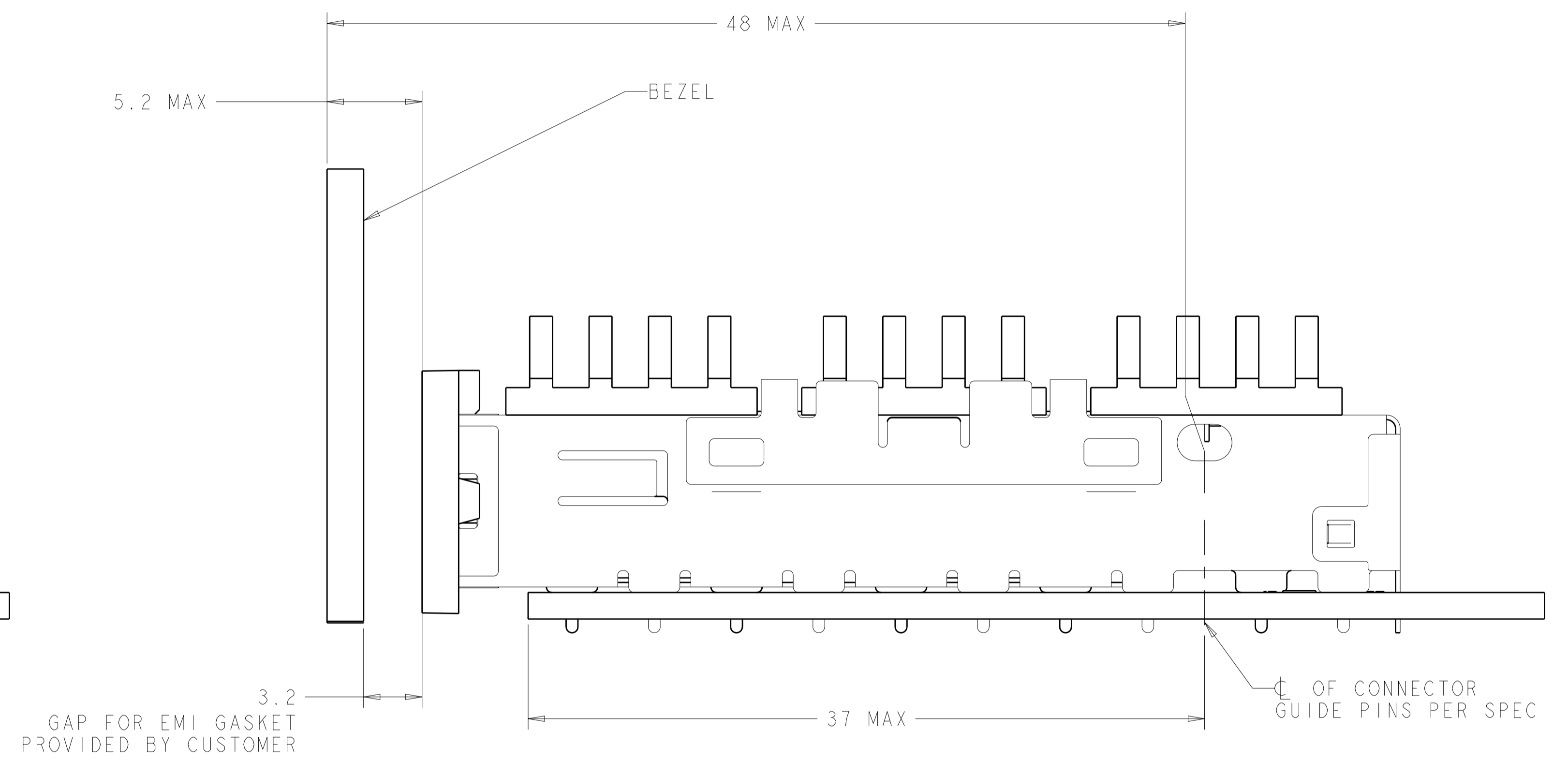
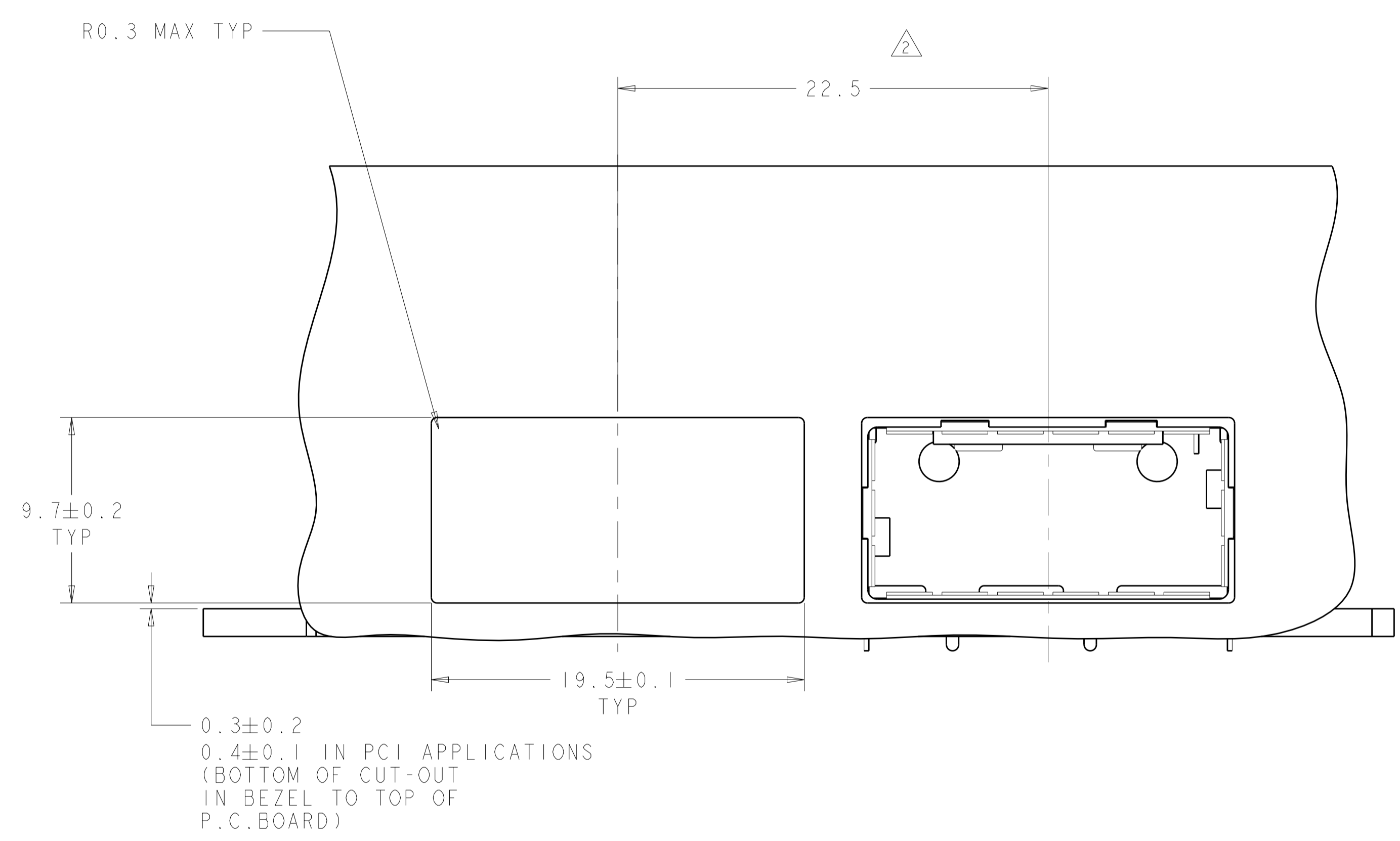


EXPLODED VIEW
 SCALE 8:1

DESIGN APPROVED THIS PRINT IS
PRELIMINARY
 TO FIRST PIECE APPROVAL
 CONTACT PRODUCT ENGINEERING
 BEFORE USING THIS PRINT

THIS DRAWING IS A CONTROLLED DOCUMENT.		DMN D. ZHU	23AUG2012	TE Connectivity NAME CAGE ASSEMBLY, BEHIND BEZEL, QSPF WITH HEAT SINK PRODUCT SPEC 108-2286 APPLICATION SPEC 114-13218 WEIGHT - Customer Drawing	RESTRICTED TO	
DIMENSIONS:		CHK J. YANG	23AUG2012		SIZE	A1
mm		APVD A. CAI	23AUG2012		CAGE CODE	2170395
0 PLC ±0.5 2 PLC ±0.13 3 PLC ±0.013 4 PLC ±0.0001 ANGLES ±0.0001		FINISH	-		SCALE	2:1
MATERIAL				SHEET	2 OF 4	
				REV	1	

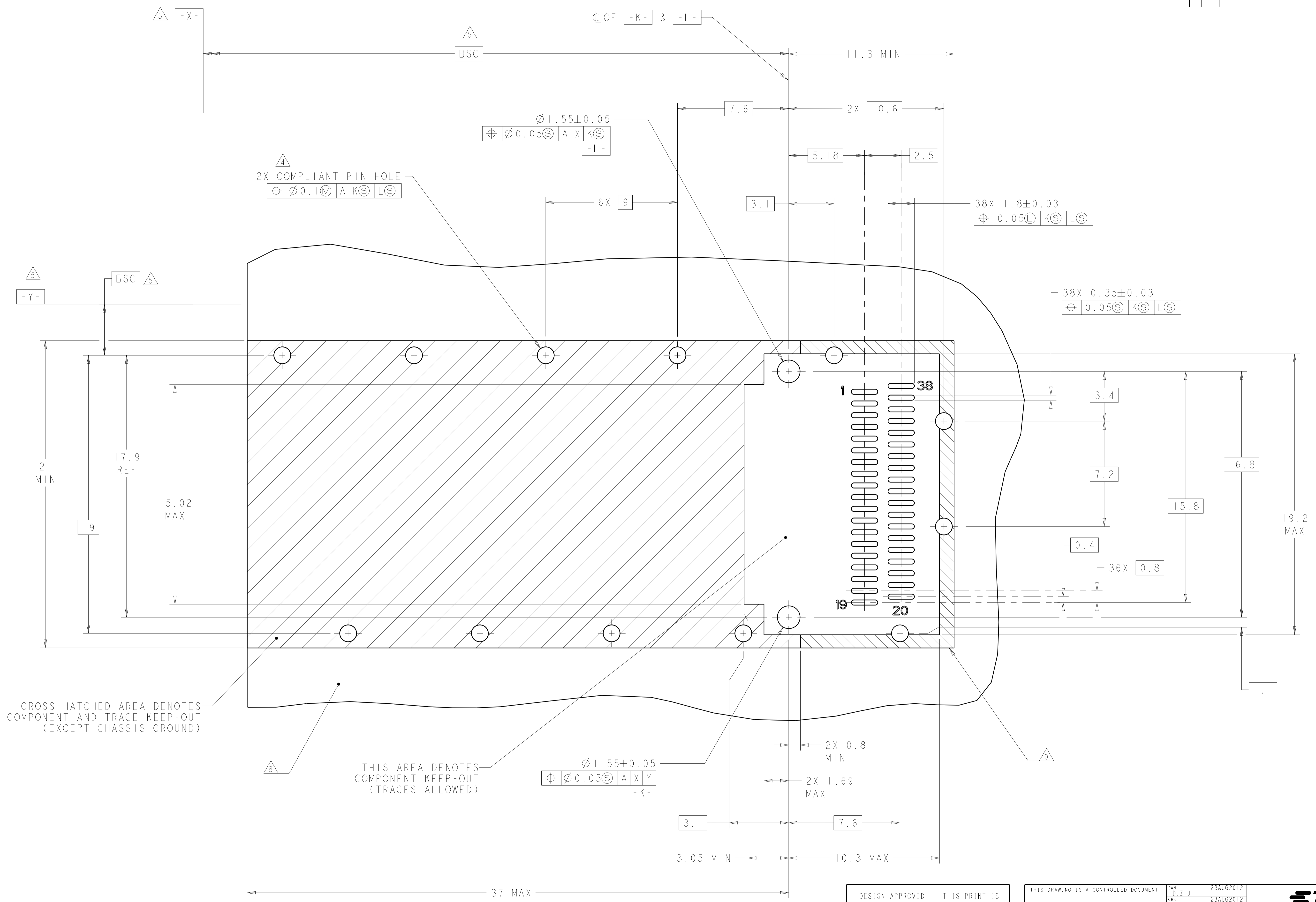
LOC	DIST	REVISIONS					
GP	00	P.	LTN	DESCRIPTION	DATE	DWN	APVD
-	-	-	-	SEE SHEET 1	-	-	-



DESIGN APPROVED THIS PRINT IS
PRELIMINARY
 TO FIRST PIECE APPROVAL
 CONTACT PRODUCT ENGINEERING
 BEFORE USING THIS PRINT

THIS DRAWING IS A CONTROLLED DOCUMENT.		DWN D. ZHU	23AUG2012	TE Connectivity
DIMENSIONS: mm		CHK J. YANG	23AUG2012	
TOLERANCES UNLESS OTHERWISE SPECIFIED:		APVD A. CAI	23AUG2012	NAME CAGE ASSEMBLY, BEHIND BEZEL, QSFP, WITH HEAT SINK
0 PLC ±0.5		PRODUCT SPEC		SIZE A1
1 PLC ±0.13		APPLICATION SPEC		CAGE CODE 108-2286
2 PLC ±0.013		RESTRICTED TO		DRAWING NO 2170395
3 PLC ±0.0001		MATERIAL		SCALE 2:1
4 PLC ±0.0001		FINISH		SHEET 3 OF 4
ANGLES ±		WEIGHT		REV 1
MATERIAL		Customer Drawing		

LOC	DIST	REVISIONS			
		REV	DATE	BY	APPV
GP	00	-	SEE SHEET 1	-	-



CROSS-HATCHED AREA DENOTES COMPONENT AND TRACE KEEP-OUT (EXCEPT CHASSIS GROUND)

THIS AREA DENOTES COMPONENT KEEP-OUT (TRACES ALLOWED)

$\varnothing 1.55 \pm 0.05$
 $\oplus \varnothing 0.05 \text{ S } | \text{ A } | \text{ X } | \text{ Y } |$
 -K-

RECOMMENDED PCB LAYOUT
 SINGLE SIDED CONFIGURATION
 SCALE 8:1

DESIGN APPROVED THIS PRINT IS
PRELIMINARY
 TO FIRST PIECE APPROVAL
 CONTACT PRODUCT ENGINEERING
 BEFORE USING THIS PRINT

THIS DRAWING IS A CONTROLLED DOCUMENT.		DWN: D.ZHU 23AUG2012	TE Connectivity
DIMENSIONS: mm		CHK: J.YANG 23AUG2012	
TOLERANCES UNLESS OTHERWISE SPECIFIED:		APPV: A.CAI 23AUG2012	NAME: CAGE ASSEMBLY, BEHIND BEZEL, QSFP WITH HEAT SINK
0 PLC ±0.5	1 PLC ±0.13	PRODUCT SPEC 108-2286	SIZE: A1
3 PLC ±0.013	4 PLC ±0.0001	APPLICATION SPEC 114-13218	CAGE CODE: 2170395
MATERIAL: -		WEIGHT: -	RESTRICTED TO: -
FINISH: -		Customer Drawing	SCALE: 2:1 SHEET 4 OF 4 REV 1