



Chipsmall Limited consists of a professional team with an average of over 10 year of expertise in the distribution of electronic components. Based in Hongkong, we have already established firm and mutual-benefit business relationships with customers from,Europe,America and south Asia,supplying obsolete and hard-to-find components to meet their specific needs.

With the principle of “Quality Parts,Customers Priority,Honest Operation,and Considerate Service”,our business mainly focus on the distribution of electronic components. Line cards we deal with include Microchip,ALPS,ROHM,Xilinx,Pulse,ON,Everlight and Freescale. Main products comprise IC,Modules,Potentiometer,IC Socket,Relay,Connector.Our parts cover such applications as commercial,industrial, and automotives areas.

We are looking forward to setting up business relationship with you and hope to provide you with the best service and solution. Let us make a better world for our industry!



Contact us

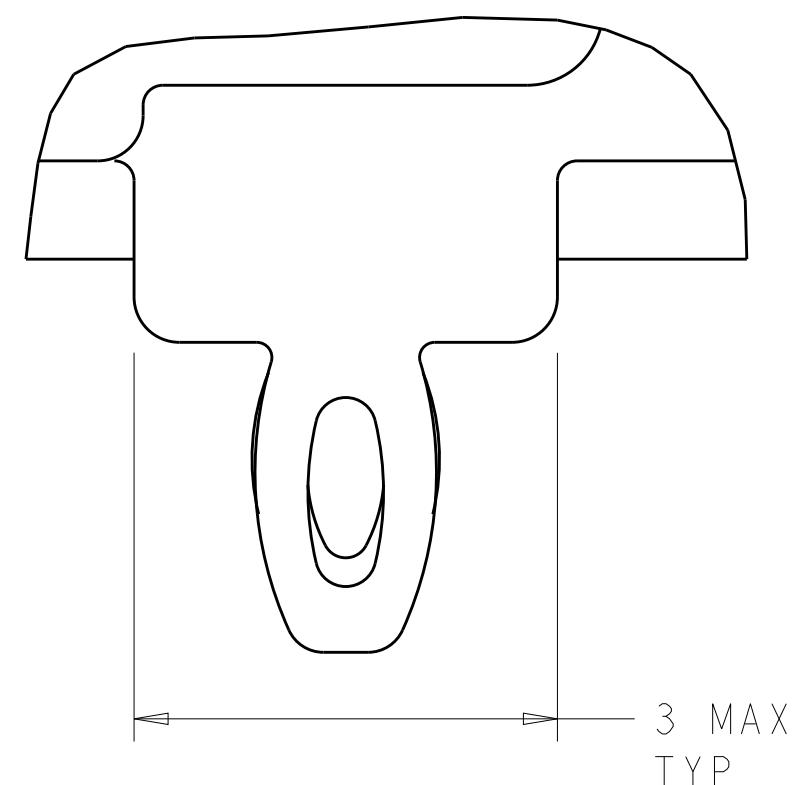
Tel: +86-755-8981 8866 Fax: +86-755-8427 6832

Email & Skype: info@chipsmall.com Web: www.chipsmall.com

Address: A1208, Overseas Decoration Building, #122 Zhenhua RD., Futian, Shenzhen, China



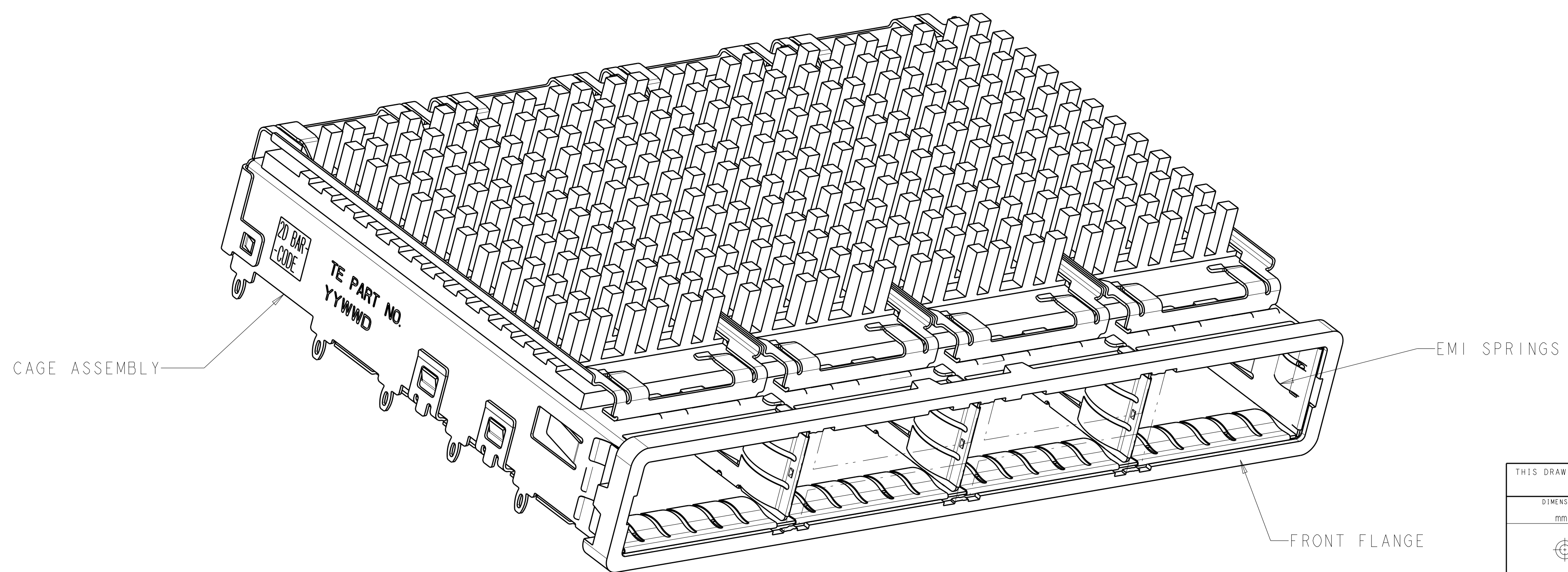
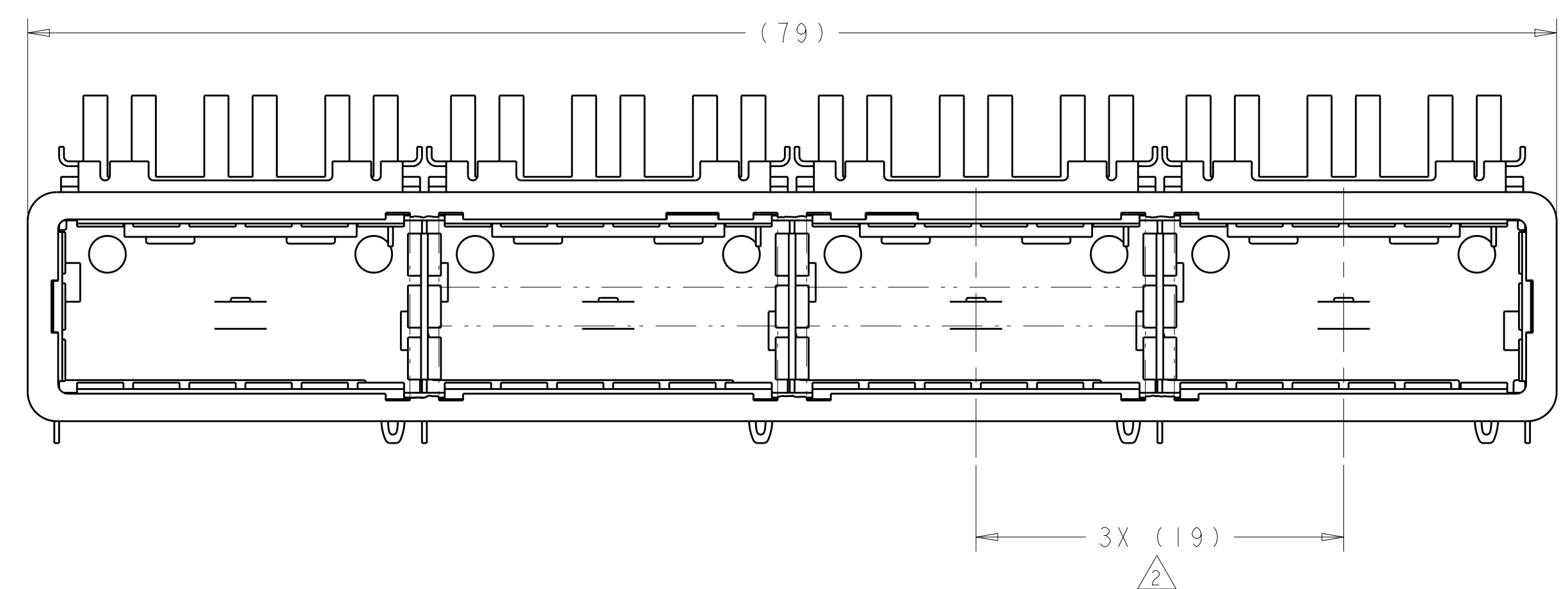
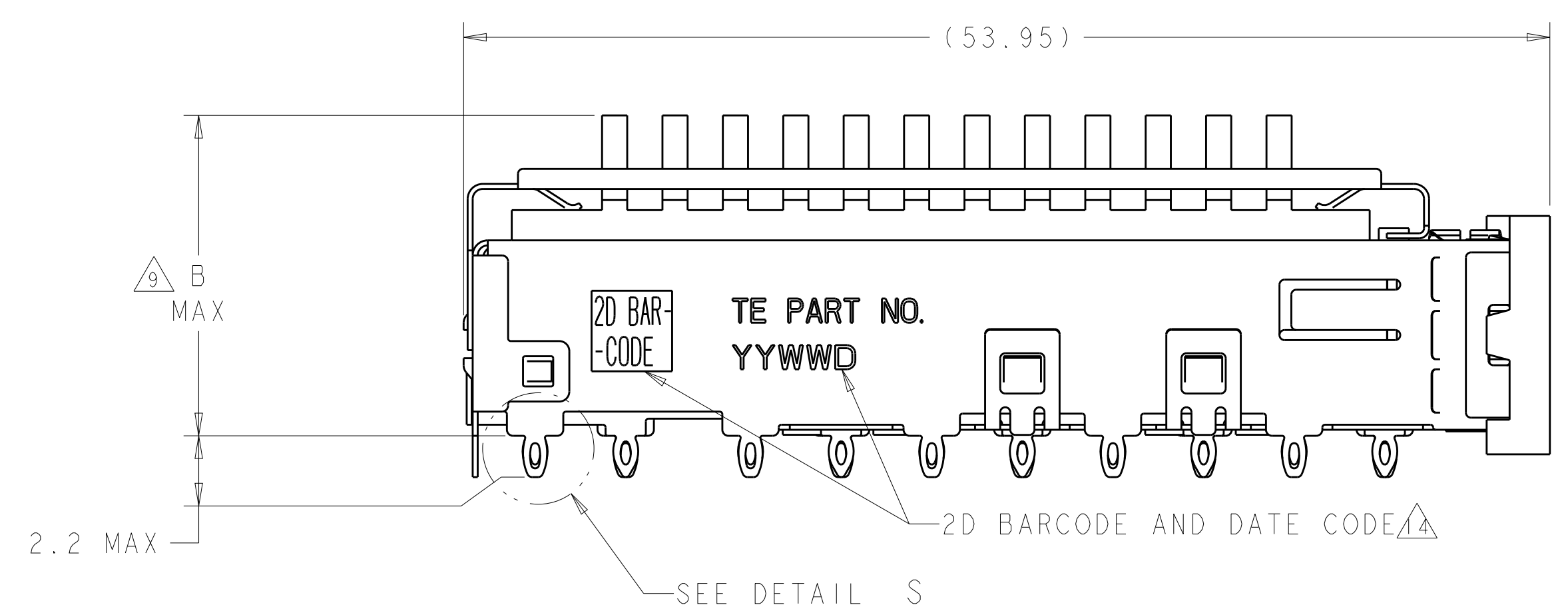
LOC	DIST	REVISIONS					
		P	LTN	DESCRIPTION	DATE	DMN	APVD
GP	00	I		PRELIMINARY	24SEP2013	ZJ	JY
		A		ACTIVE THE DRAWING	31DEC2013	ZJ	JY
		B		REVISED PER ECO-15-005721	4AUG2015	RG	SH



DETAIL S $\Delta 12$
 SCALE 20:1

- $\Delta 1$ CAGE ASSEMBLY MATERIAL: NICKEL SILVER, 0.25 THICK
 HEAT SINK MATERIAL: ALUMINUM
 HEAT SINK CLIP MATERIAL: STAINLESS STEEL
 EMI SPRING MATERIAL: COPPER ALLOY
 FRONT FLANGE MATERIAL: ZINC ALLOY
- $\Delta 2$ PITCH BETWEEN PORTS OF ONE 1X4 CAGE ASSEMBLY.
- $\Delta 3$ SPACING BETWEEN CAGES ON THE SAME PC BOARD, TO BE SPECIFIED BY CUSTOMER, MUST COMPLY WITH MINIMUM DIMENSIONS SHOWN.
- $\Delta 4$ REFERENCE APPLICATION SPEC 114-13218 FOR RECOMMENDED DRILL HOLE DIAMETER AND PLATING THICKNESS.
- $\Delta 5$ DATUMS AND BASIC DIMENSIONS ESTABLISHED BY CUSTOMER.
- $\Delta 6$ DIMENSION C IS THE NOMINAL THICKNESS OF CUSTOMER SUPPLIED PC BOARD,
 SINGLE SIDED PC BOARD MINIMUM THICKNESS = 1.45mm
 DOUBLE SIDED PC BOARD MINIMUM THICKNESS = 2.2mm PER QSFP.
- $\Delta 7$ HEAT SINKS AND CLIPS SHIPPED ASSEMBLED TO CAGE ASSEMBLY. CAGE ASSEMBLY MAY BE PRESSED INTO THE PCB AS SHIPPED.
- $\Delta 8$ DATUM \square -A- IS TOP SURFACE OF PC BOARD.
- $\Delta 9$ DIMENSION APPLIES WITH MODULE INSERTED IN CAGE.
- $\Delta 10$ UNPLATED THRU HOLE.
- 11. MATES WITH QSFP MSA COMPATIBLE TRANSCEIVER.
- $\Delta 12$ SURFACE TRACES PERMITTED WITHIN THIS AREA EXCEPT WHERE CAGE STANDOFFS, SHOWN IN DETAIL S, CONTACT PC BOARD.
- $\Delta 13$ BASELINE FOR THESE DIMENSIONS IS THE CENTER OF COMPLIANT PIN HOLE.
- $\Delta 14$ 2D BARCODE AND DATE CODE (YYWW) MARKED ON SIDE OF CAGE.
- $\Delta 15$ REFERENCE APP SPEC 114-13218 FOR GASKET THICKNESS CALCULATION.

- $\Delta 16$ EMI SPRING FINISH: 2 μ m MINIMUM TIN
 FRONT FLANGE FINISH: 3 μ m MINIMUM TIN OVER 1.27 μ m MINIMUM NICKEL OVER 5.08 μ m MINIMUM COPPER.
 HEAT SINK FINISH: NICKEL.



23.0	NETWORKING	2170615-4
16.8	CUSTOMERIZED	2170615-3
16.0	SAN	2170615-2
13.7	PCI	2170615-1
B	HEAT SINK PROFILE	PART NUMBER

THIS DRAWING IS A CONTROLLED DOCUMENT.

DIMENSIONS:	TOLERANCES UNLESS OTHERWISE SPECIFIED:	DMN	ZJ	24SEP2013
mm	0 PLC \pm	CHK	JY	24SEP2013
	1 PLC ± 0.1	APVD	MC	24SEP2013
	2 PLC ± 0.1	PRODUCT SPEC		108-2286
	3 PLC \pm	APPLICATION SPEC		114-13218
	4 PLC \pm	WEIGHT		
	ANGLES \pm	FINISH		
MATERIAL				

Customer Drawing

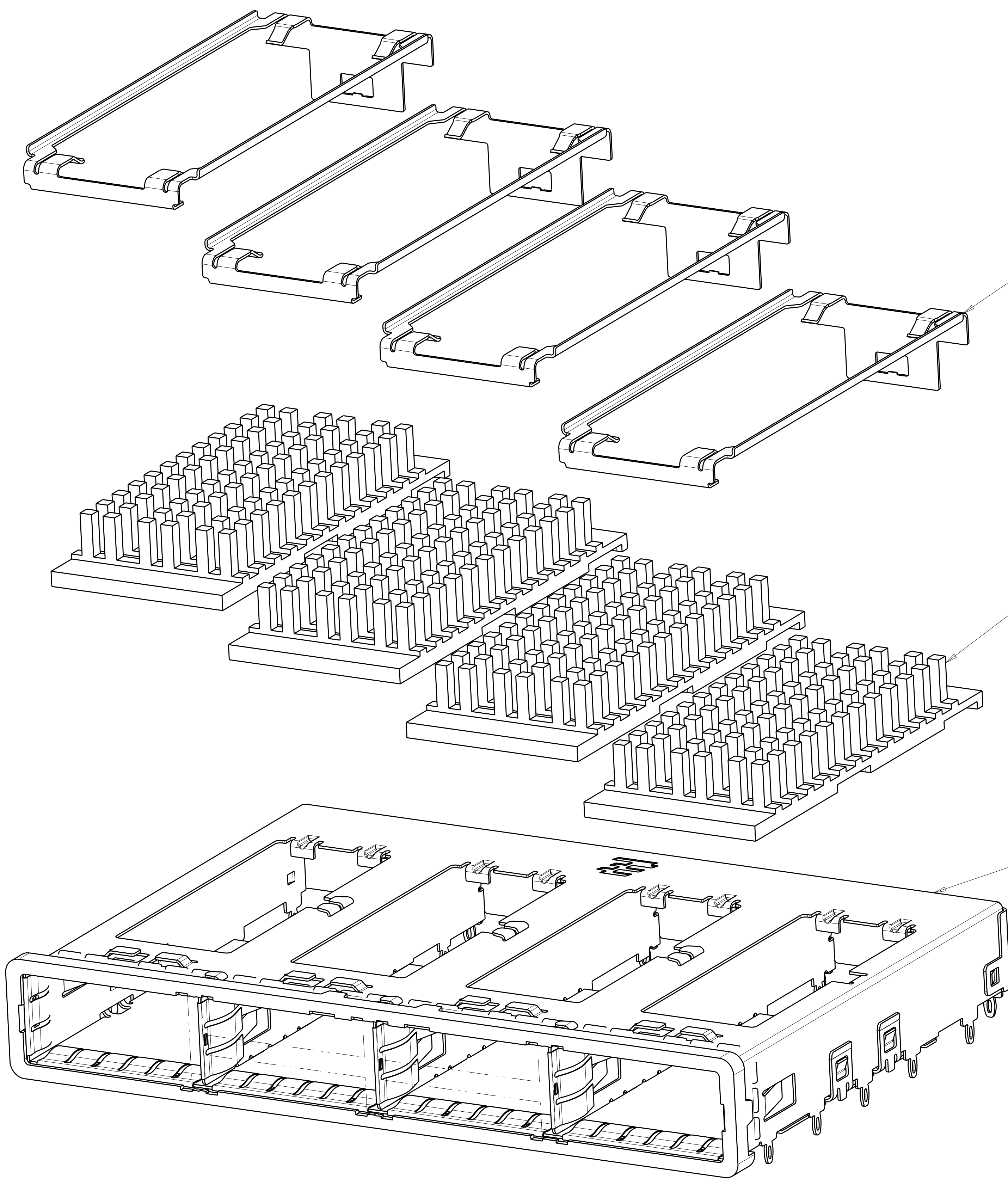
NAME: 1X4 CAGE ASSEMBLY, BEHIND BEZEL, W/ HEAT SINKS, QSFP

SIZE: A1 CAGE CODE: 00779 DRAWING NO: 2170615

RESTRICTED TO: -

SCALE: 4:1 SHEET: 1 OF 5 REV: B

LOC	DIST	REVISIONS					
		P	LTN	DESCRIPTION	DATE	DWN	APVD
GP	00	-	-	SEE SHEET 1	-	-	-



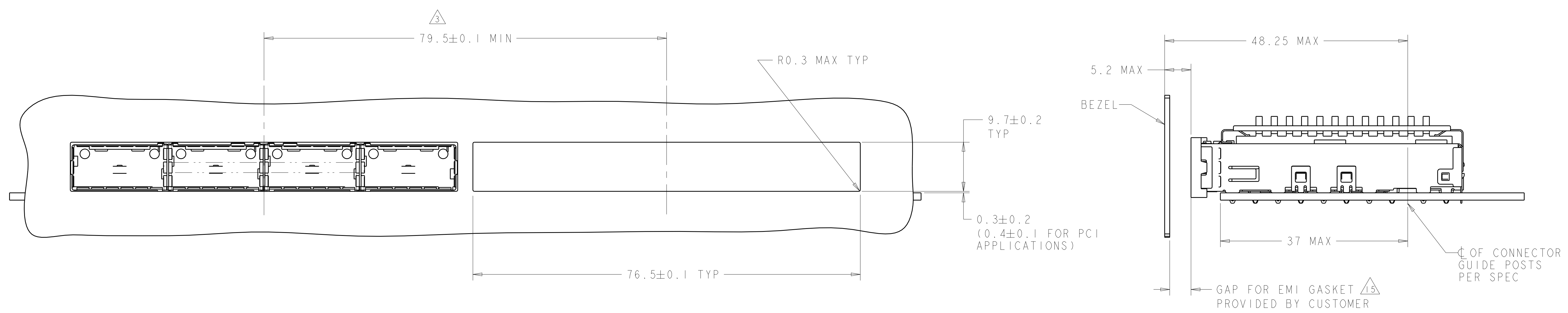
HEAT SINK CLIPS Δ
 QUANTITY: 4

72 PIN HEAT SINKS Δ
 QUANTITY: 4

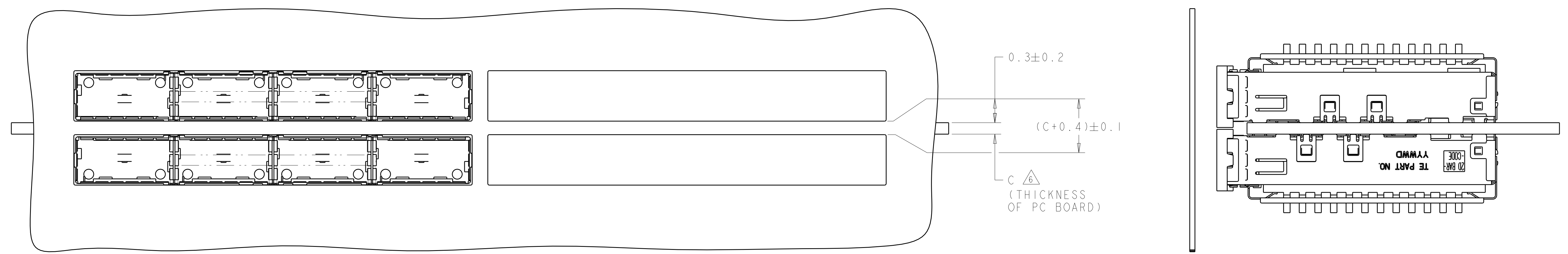
1X4 BEHIND BEZEL QSFP
 CAGE ASSEMBLY
 QUANTITY: 1

THIS DRAWING IS A CONTROLLED DOCUMENT.		DWN	ZJ	24SEP2013			
DIMENSIONS:		CHK	JY	24SEP2013			
mm	TOLERANCES UNLESS OTHERWISE SPECIFIED:	APVD	MC	24SEP2013			
		NAME	1X4 CAGE ASSEMBLY, BEHIND BEZEL, W/ HEAT SINKS, QSFP				
	0 PLC ±	PRODUCT SPEC	108-2286	SIZE	CAGE CODE	DRAWING NO	RESTRICTED TO
	1 PLC ±0.1	APPLICATION SPEC	114-13218	A100779	C=2170615		
	2 PLC ±	WEIGHT		Customer Drawing	SCALE	4:1	SHEET 2 OF 5
	3 PLC ±	FINISH					REV B
	4 PLC ±						
	ANGLES ±						

LOC	DIST	REV	DATE	BY	APPV
GP	00				
		DESCRIPTION	DATE	BY	APPV
		SEE SHEET 1			



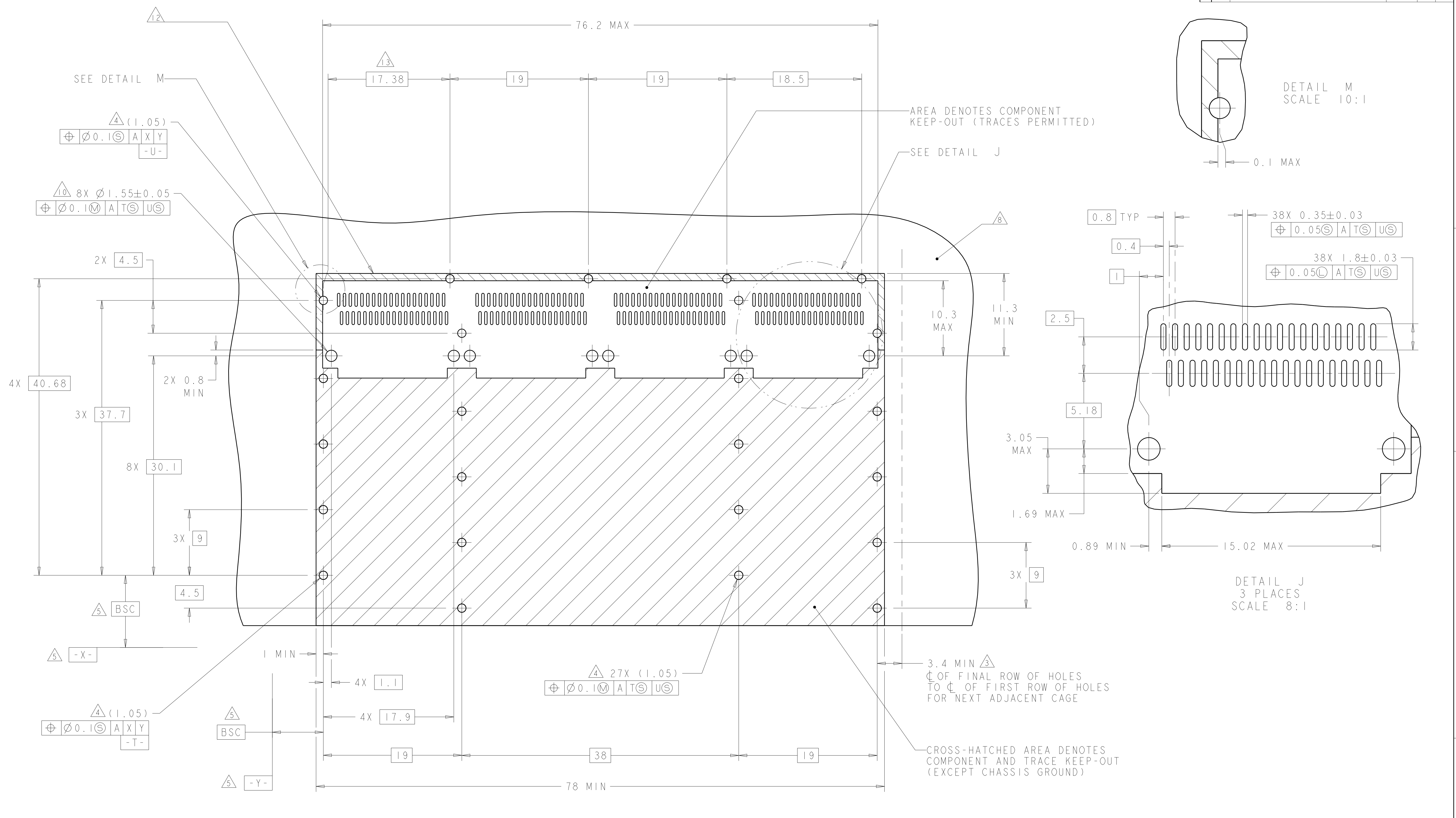
ONE SIDED CONFIGURATION
 SCALE 5:2



BELLY TO BELLY CONFIGURATION SIMILAR
 TO ONE SIDED EXCEPT WHERE NOTED
 SCALE 5:2

THIS DRAWING IS A CONTROLLED DOCUMENT.		OWN: ZJ	24SEP2013		NAME: 1X4 CAGE ASSEMBLY, BEHIND BEZEL, W/ HEAT SINKS, QSFP
DIMENSIONS: mm		CHK: JY	24SEP2013		
TOLERANCES UNLESS OTHERWISE SPECIFIED:		APPV: MC	24SEP2013	PRODUCT SPEC	RESTRICTED TO
0 PLC	±			108-2286	SIZE: CAGE CODE DRAWING NO
2 PLC	±0.1			APPLICATION SPEC	A100779C=2170615
3 PLC	±0.1			114-13218	SCALE: 4:1 SHEET 3 OF 5 REV B
4 PLC	±			Customer Drawing	
ANGLES	±				
MATERIAL					
FINISH					

LOC	DIST	REV	DATE	OWN	APVD
GP	00				
		DESCRIPTION			
		SEE SHEET 1			

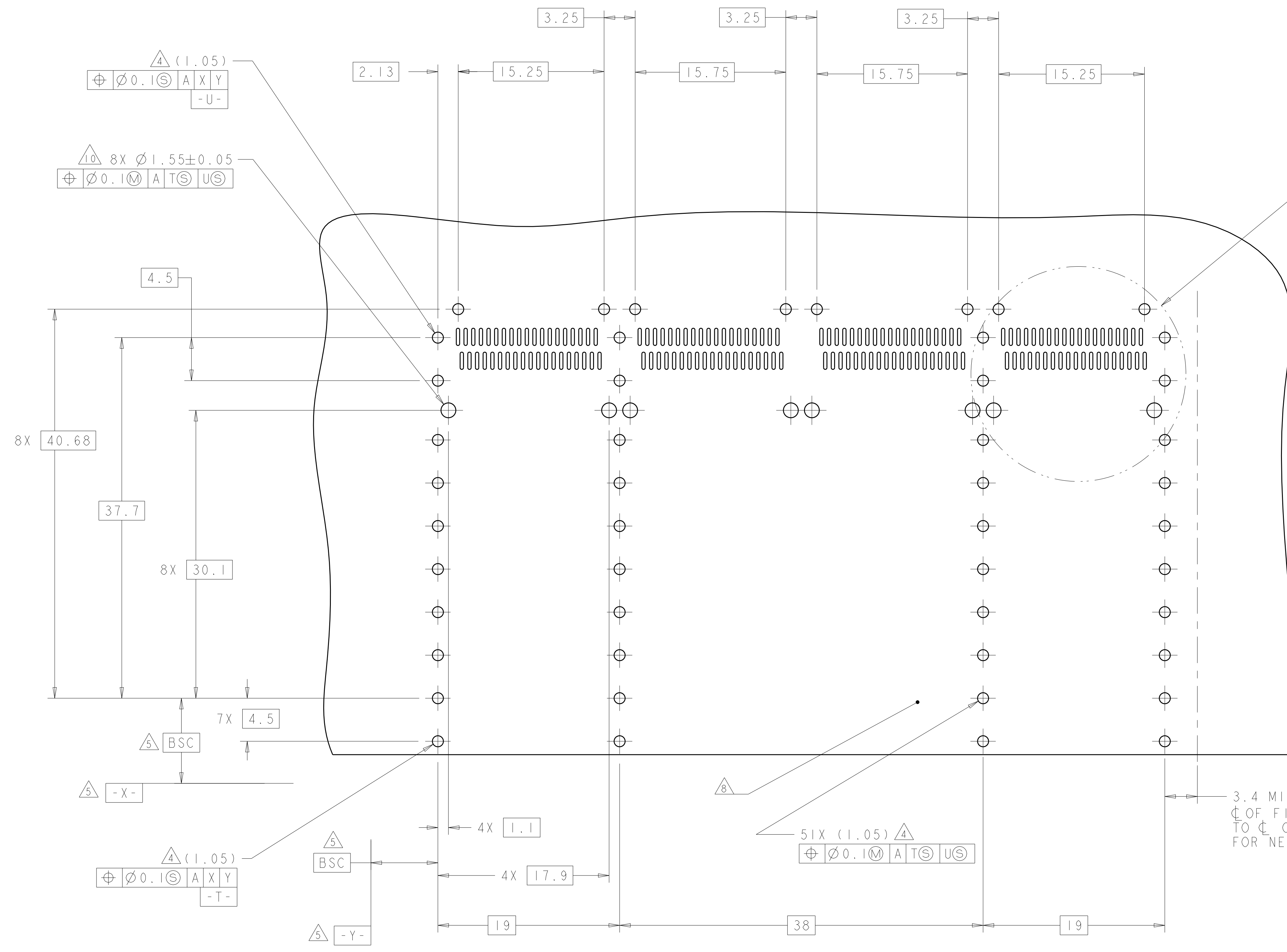


RECOMMENDED PC BOARD LAYOUT
 SINGLE SIDE MOUNT CONFIGURATION
 SCALE 4:1

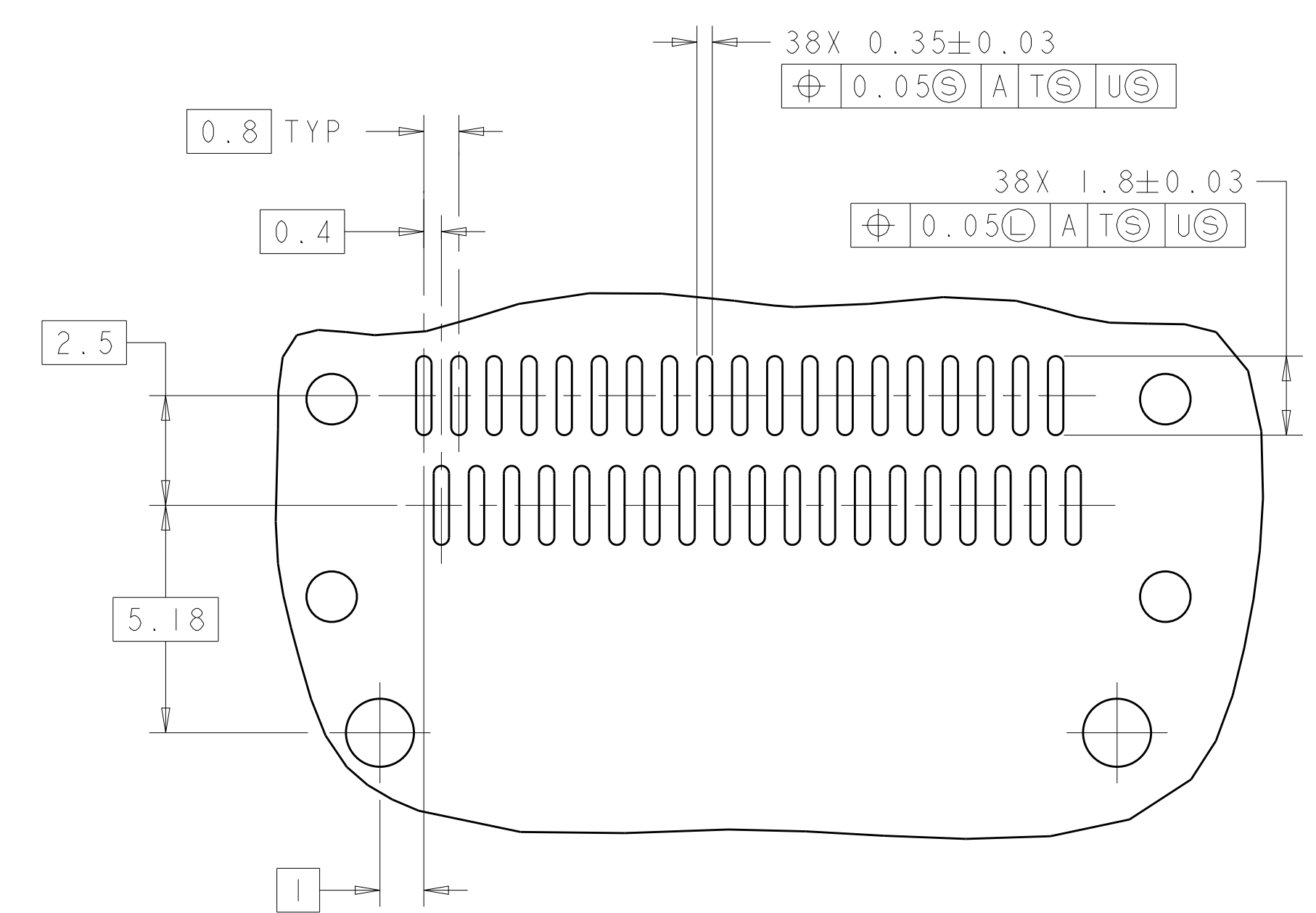
THIS PRODUCT HAS NOT COMPLETED VALIDATION/QUALIFICATION TESTING

THIS DRAWING IS A CONTROLLED DOCUMENT.		OWN: ZJ	24SEP2013	STE TE Connectivity
		CHK: JY	24SEP2013	
DIMENSIONS:		APVD: MC	24SEP2013	NAME: 1X4 CAGE ASSEMBLY, BEHIND BEZEL, W/ HEAT SINKS, QSFP
TOLERANCES UNLESS OTHERWISE SPECIFIED:		PRODUCT SPEC	108-2286	
mm		APPLICATION SPEC	114-13218	
0 PLC ± 1 PLC ±0.1 2 PLC ±0.1 3 PLC ± 4 PLC ± ANGLES ±		WEIGHT	-	
MATERIAL:		FINISH:	-	SIZE: CAGE CODE: DRAWING NO: A100779C=2170615
		Customer Drawing	SCALE 4:1	SHEET 4 OF 5

LOC	DIST	REVISIONS					
GP	00	P	LTN	DESCRIPTION	DATE	DMN	APVD
		-		SEE SHEET 1	-	-	-



SEE DETAIL K



DETAIL K
SCALE 8:1

RECOMMENDED PC BOARD LAYOUT
 BELLY TO BELLY CONFIGURATION
 SEE SHEET 4 FOR COMPONENT
 AND TRACE KEEP-OUTS
 SCALE 4:1

THIS PRODUCT HAS NOT COMPLETED VALIDATION/QUALIFICATION TESTING

THIS DRAWING IS A CONTROLLED DOCUMENT.		DMN: Z4SEP2013	TE Connectivity
DIMENSIONS: mm		CHK: JY	
TOLERANCES UNLESS OTHERWISE SPECIFIED:		APVD: MC	NAME: 1X4 CAGE ASSEMBLY, BEHIND BEZEL, W/ HEAT SINKS, QSFP
0 PLC ±0.1		PRODUCT SPEC: 108-2286	
1 PLC ±0.1		APPLICATION SPEC: 114-13218	SIZE: A1
2 PLC ±0.1		WEIGHT: -	CAGE CODE: 00779
3 PLC ±0.1		Customer Drawing	DRAWING NO: 2170615
4 PLC ±0.1		SCALE: 4:1	SHEET 5 OF 5
ANGLES ±0.1		REV: B	