



Chipsmall Limited consists of a professional team with an average of over 10 year of expertise in the distribution of electronic components. Based in Hongkong, we have already established firm and mutual-benefit business relationships with customers from,Europe,America and south Asia,supplying obsolete and hard-to-find components to meet their specific needs.

With the principle of “Quality Parts,Customers Priority,Honest Operation,and Considerate Service”,our business mainly focus on the distribution of electronic components. Line cards we deal with include Microchip,ALPS,ROHM,Xilinx,Pulse,ON,Everlight and Freescale. Main products comprise IC,Modules,Potentiometer,IC Socket,Relay,Connector.Our parts cover such applications as commercial,industrial, and automotives areas.

We are looking forward to setting up business relationship with you and hope to provide you with the best service and solution. Let us make a better world for our industry!



Contact us

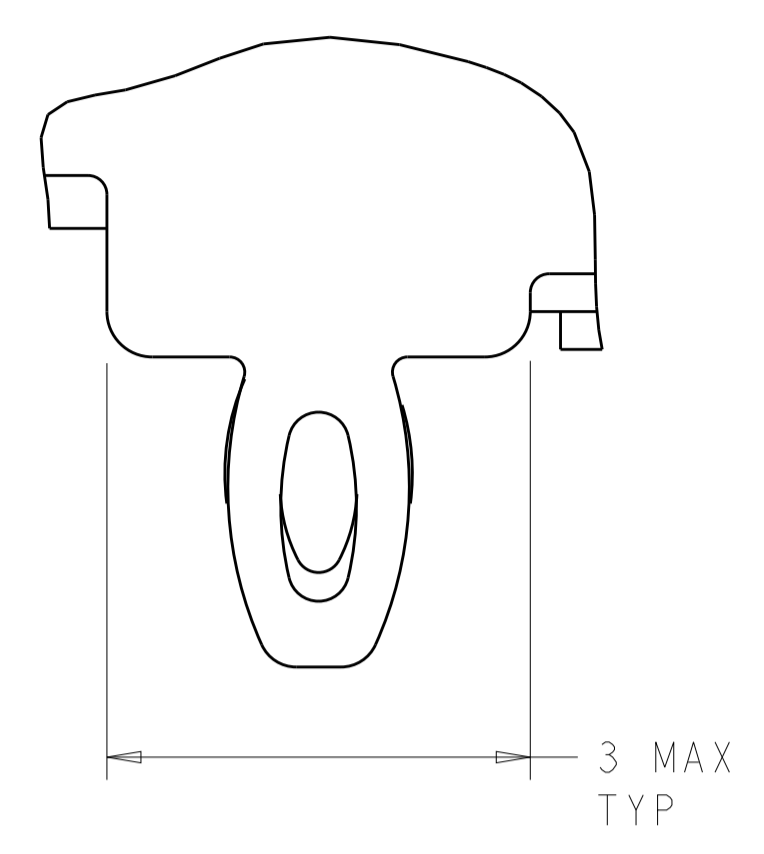
Tel: +86-755-8981 8866 Fax: +86-755-8427 6832

Email & Skype: info@chipsmall.com Web: www.chipsmall.com

Address: A1208, Overseas Decoration Building, #122 Zhenhua RD., Futian, Shenzhen, China



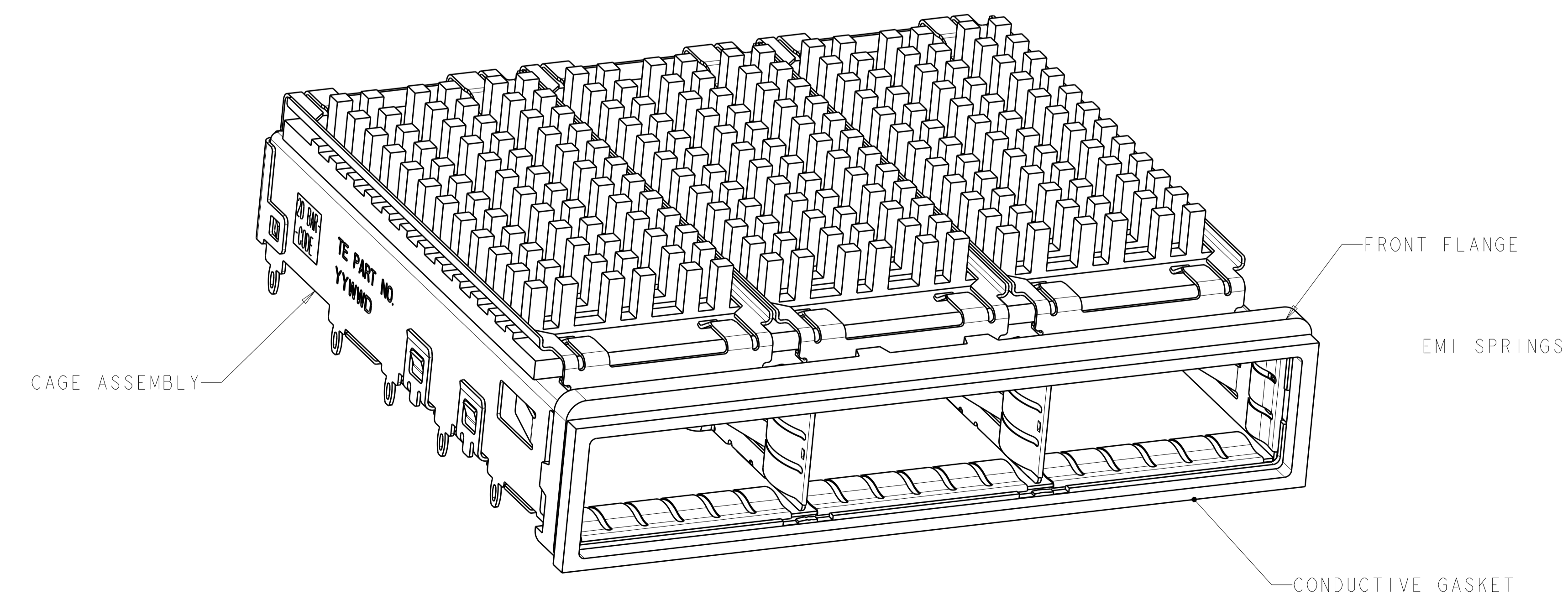
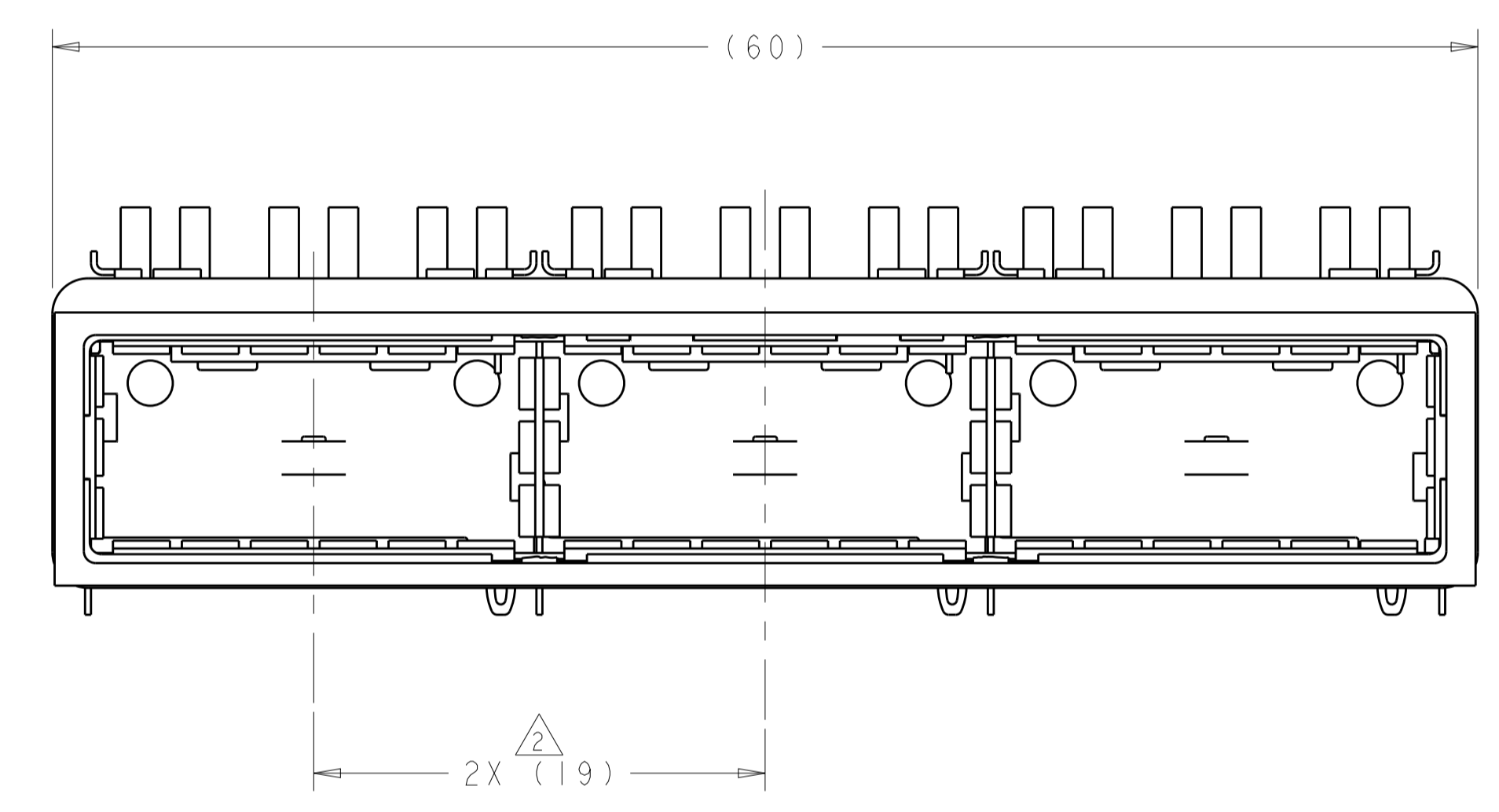
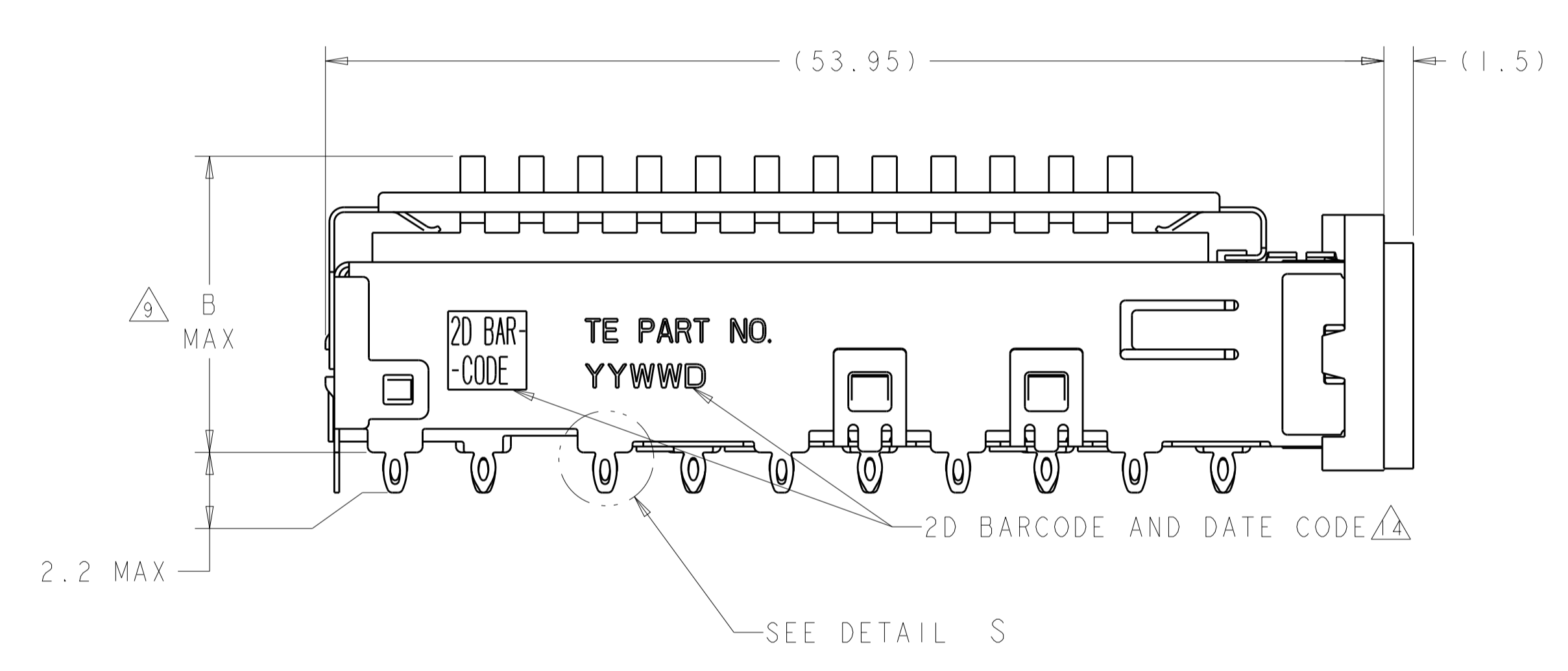
LOC	DIST	REVISIONS					
		P	LTN	DESCRIPTION	DATE	DMN	APVD
GP	00	I		PRELIMINARY	23FEB2012	KS	AC
		A		REVISED PER ECR-12-006970	17APR2012	KS	AC
		B		REVISED PER ECO-15-005721	4AUG2015	RG	SH



DETAIL S $\Delta 12$
 SCALE 20:1

- $\Delta 1$ MATERIALS:
 CAGE ASSEMBLY: NICKEL SILVER, 0.25 THICK
 EMI SPRINGS: COPPER ALLOY
 EMI GASKET: BURRER FOAM
 FRONT FLANGE: ZINC ALLOY
 HEAT SINK: ALUMINUM
 HEAT SINK CLIP: STAINLESS STEEL
- $\Delta 2$ PITCH BETWEEN PORTS OF ONE 1X3 CAGE ASSEMBLY.
- $\Delta 3$ SPACING BETWEEN CAGES ON THE SAME PC BOARD, TO BE SPECIFIED BY CUSTOMER, MUST COMPLY WITH MINIMUM DIMENSIONS SHOWN.
- $\Delta 4$ REFERENCE APPLICATION SPEC 114-13218 FOR RECOMMENDED DRILL HOLE DIAMETER AND PLATING THICKNESS.
- $\Delta 5$ DATUMS AND BASIC DIMENSIONS ESTABLISHED BY CUSTOMER.
- $\Delta 6$ DIMENSION C IS THE NOMINAL THICKNESS OF CUSTOMER SUPPLIED PC BOARD.
 MINIMUM SINGLE SIDED PC BOARD THICKNESS: 1.45mm
 MINIMUM DOUBLE SIDED PC BOARD THICKNESS: 2.2mm PER QSFP
- $\Delta 7$ HEAT SINKS AND CLIPS SHIPPED ASSEMBLED TO CAGE ASSEMBLY. CAGE ASSEMBLY MAY BE PRESSED INTO THE PCB AS SHIPPED.
- $\Delta 8$ DATUM -A- IS TOP SURFACE OF PC BOARD.
- $\Delta 9$ DIMENSION APPLIES WITH MODULE INSERTED IN CAGE.
- $\Delta 10$ UNPLATED THRU HOLE.
- 11. MATES WITH QSFP MSA COMPATIBLE TRANSCEIVER.
- $\Delta 12$ SURFACE TRACES PERMITTED WITHIN THIS AREA EXCEPT WHERE CAGE STANDOFFS, SHOWN IN DETAIL S, CONTACT PC BOARD.

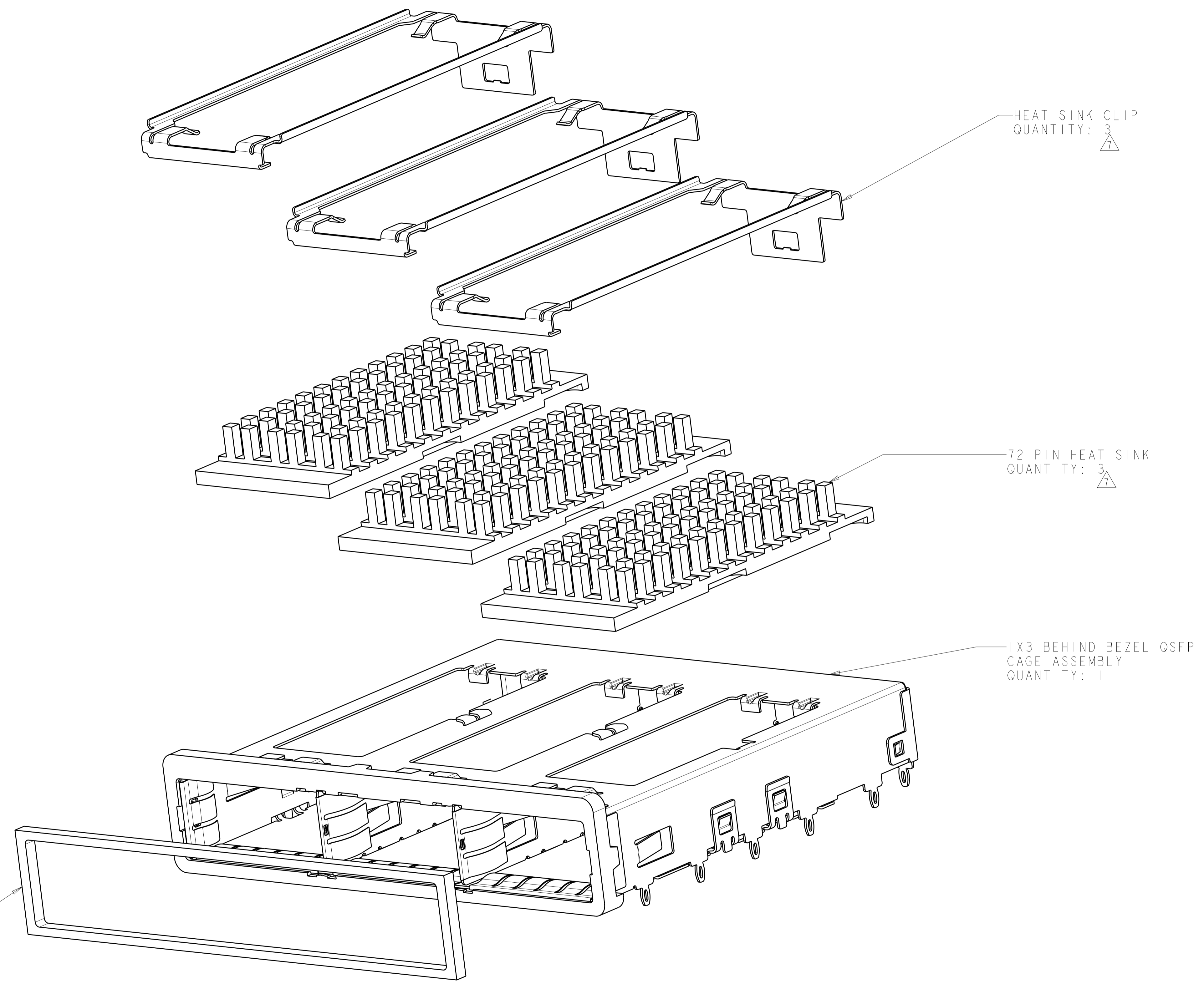
- $\Delta 3$ BASELINE FOR THESE DIMENSIONS IS THE CENTER OF COMPLIANT PIN HOLE.
- $\Delta 4$ 2D BARCODE AND DATE CODE (YYWW) MARKED ON SIDE OF CAGE.
- $\Delta 5$ REFERENCE APP SPEC 114-13218 FOR GASKET THICKNESS CALCULATION.
- $\Delta 6$ FINISH:
 EMI SPRINGS: 2 μ m MINIMUM TIN
 FRONT FLANGE: 3 μ m MINIMUM TIN OVER 1.27 μ m MINIMUM NICKEL OVER 5.08 μ m MINIMUM COPPER
 HEAT SINK: NICKEL.



23.0	NETWORKING	2174769-3
16.0	SAN	2174769-2
13.7	PCI	2174769-1
B	HEAT SINK PROFILE	PART NUMBER

THIS DRAWING IS A CONTROLLED DOCUMENT.		DMN: KINSEN SUN 23FEB2012		
DIMENSIONS: mm		CHK: DENNY ZHU 23FEB2012		
TOLERANCES UNLESS OTHERWISE SPECIFIED:		APVD: ALEY CAI 23FEB2012	NAME: 1X3 CAGE ASSEMBLY, BEHIND BEZEL, W/ HEAT SINKS, CONDUCTIVE GASKET, QSFP	
0 PLC	±	PRODUCT SPEC	SIZE: CAGE CODE DRAWING NO	
1 PLC	±0.1	108-2286	RESTRICTED TO	
2 PLC	±0.1	APPLICATION SPEC	A100779C=2174769	
3 PLC	±0.013	114-13218	SCALE 4:1 SHEET 1 OF 5 REV B	
4 PLC	±0.0001	WEIGHT		
ANGLES	±	CUSTOMER DRAWING		
FINISH				

LOC	DIST	REVISIONS			
P	LTN	DESCRIPTION	DATE	OWN	APVD
GP	00	SEE SHEET 1	-	-	-



HEAT SINK CLIP
 QUANTITY: 3

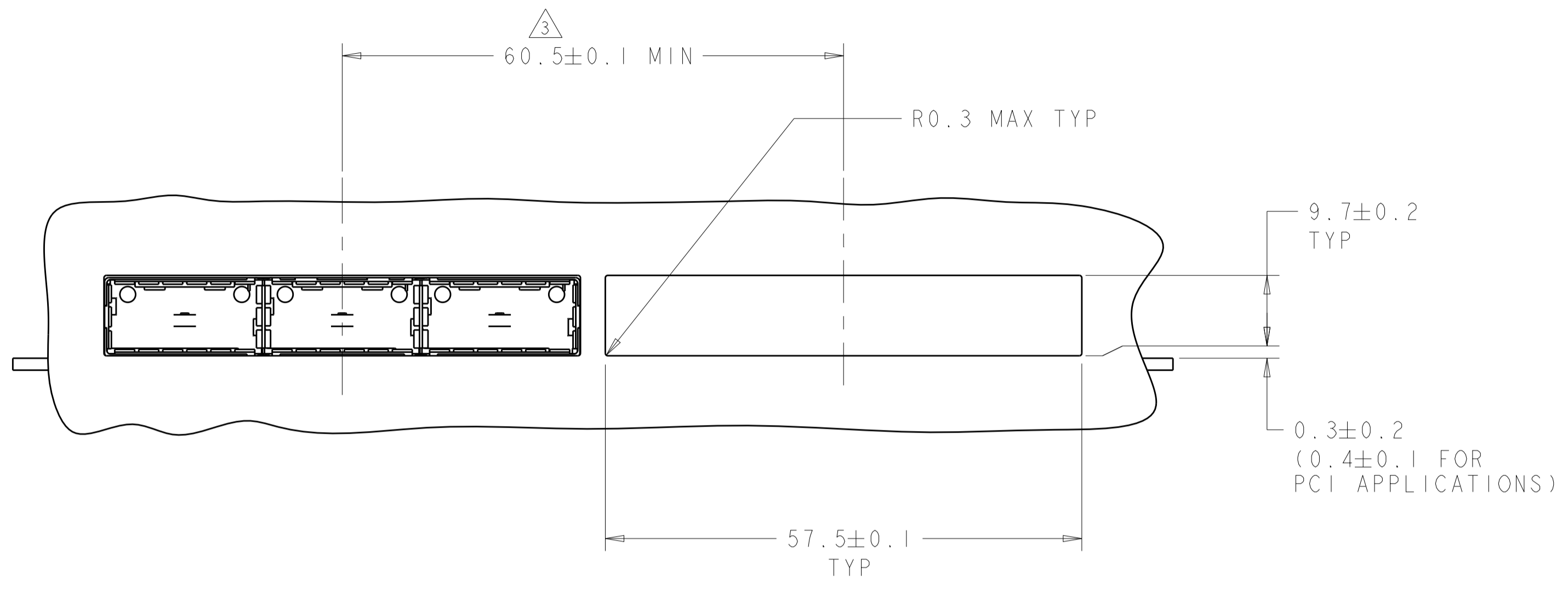
72 PIN HEAT SINK
 QUANTITY: 3

1X3 BEHIND BEZEL QSFP
 CAGE ASSEMBLY
 QUANTITY: 1

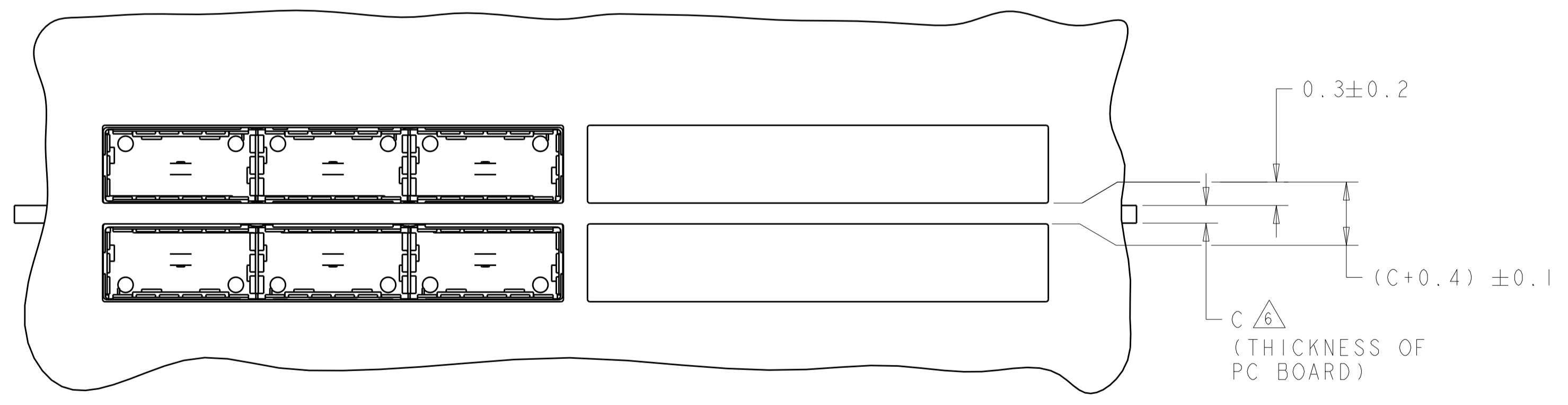
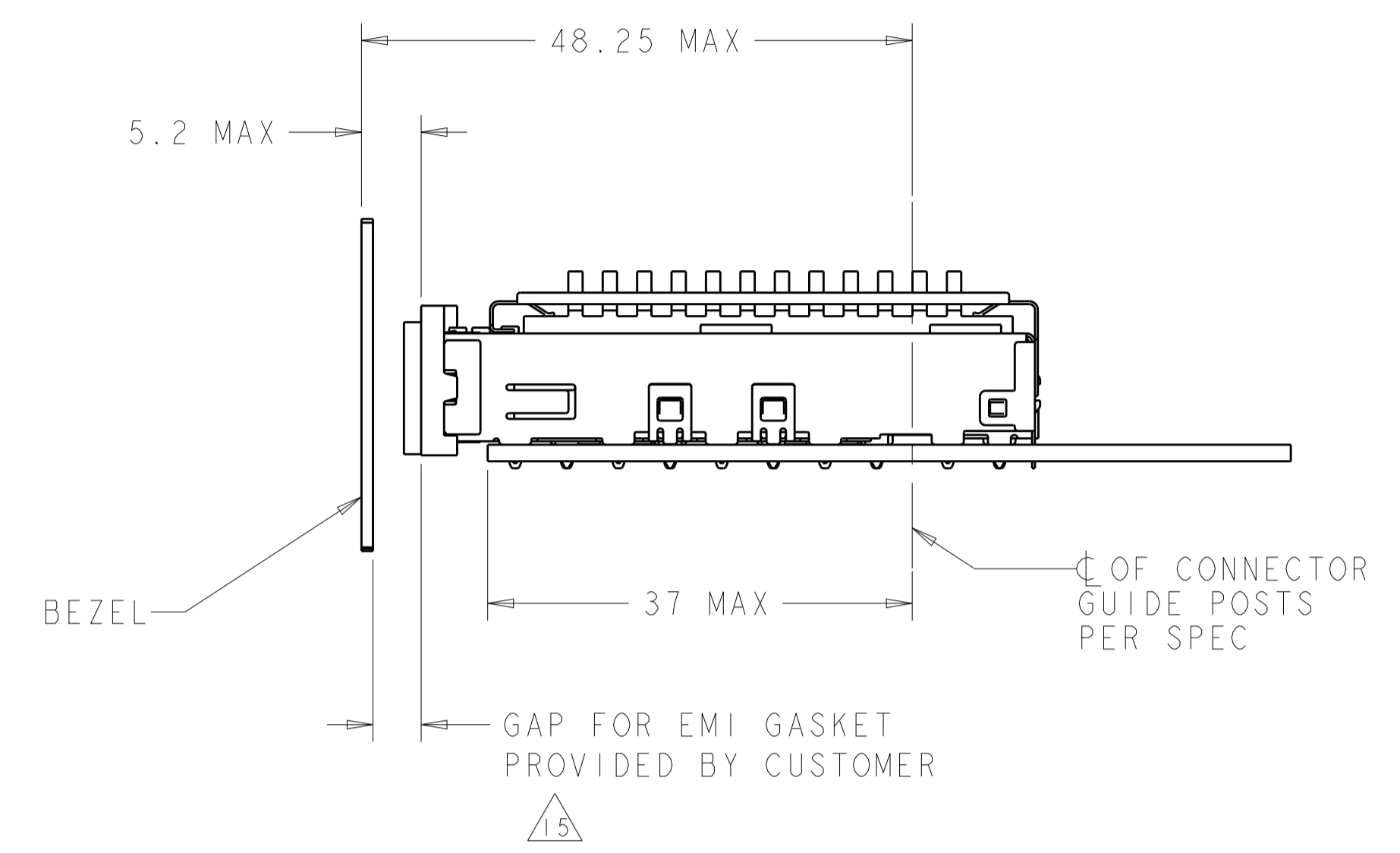
IX3 CONDUCTIVE GASKET
 QUANTITY: 1

THIS DRAWING IS A CONTROLLED DOCUMENT.		OWN: KINSEN SUN 23FEB2012	
DIMENSIONS: mm		CHK: DENNY ZHU 23FEB2012	
TOLERANCES UNLESS OTHERWISE SPECIFIED:		APVD: AILEY CAI 23FEB2012	NAME: 1X3 CAGE ASSEMBLY, BEHIND BEZEL, W/ HEAT SINKS, CONDUCTIVE GASKET, QSFP
0 PLC ±	1 PLC ±0.1	PRODUCT SPEC: 108-2286	SIZE: A1
2 PLC ±0.1	3 PLC ±0.013	APPLICATION SPEC: 114-13218	CAGE CODE: 00779
4 PLC ±0.0001	ANGLES ±	WEIGHT: -	DRAWING NO: C=2174769
MATERIAL: -	FINISH: -	CUSTOMER DRAWING	RESTRICTED TO: -
SCALE: 4:1			SHEET: 2 OF 5
REV: B			

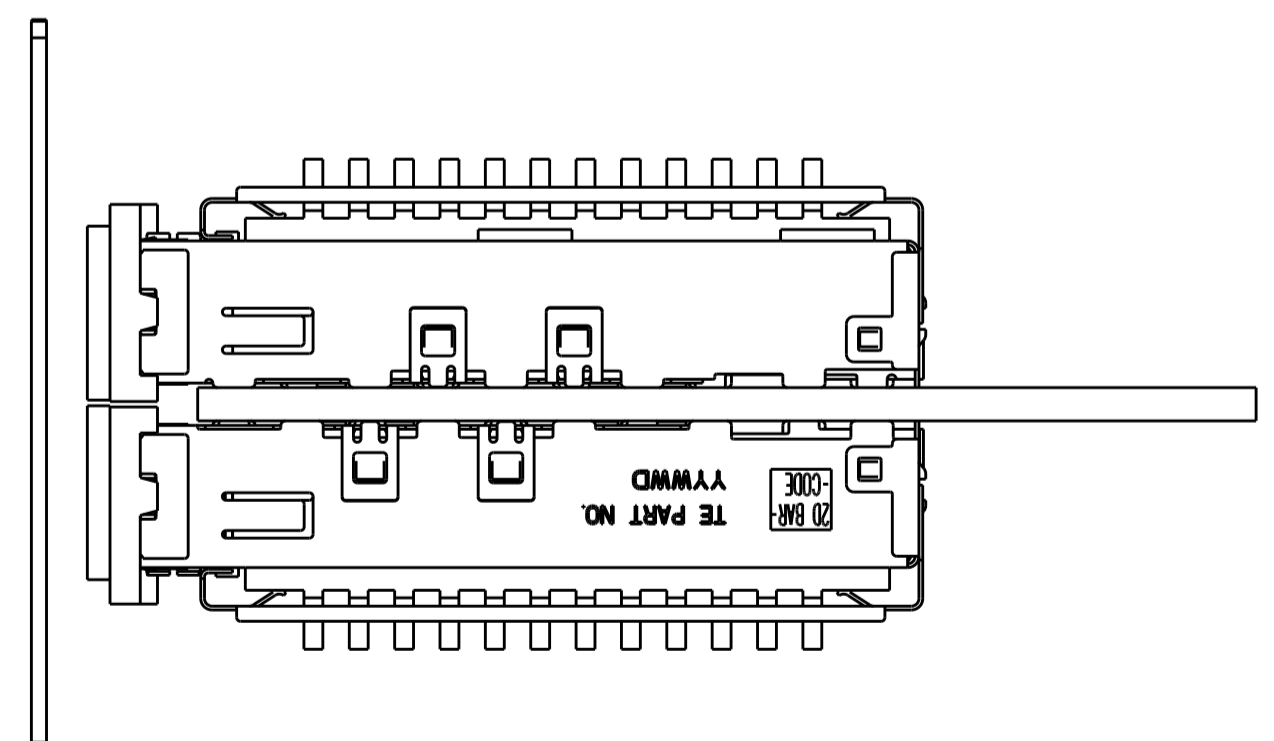
LOC	DIST	REVISIONS			
P	LTN	DESCRIPTION	DATE	OWN	APVD
-	-	SEE SHEET 1	-	-	-



ONE SIDED CONFIGURATION
 SCALE 2:1

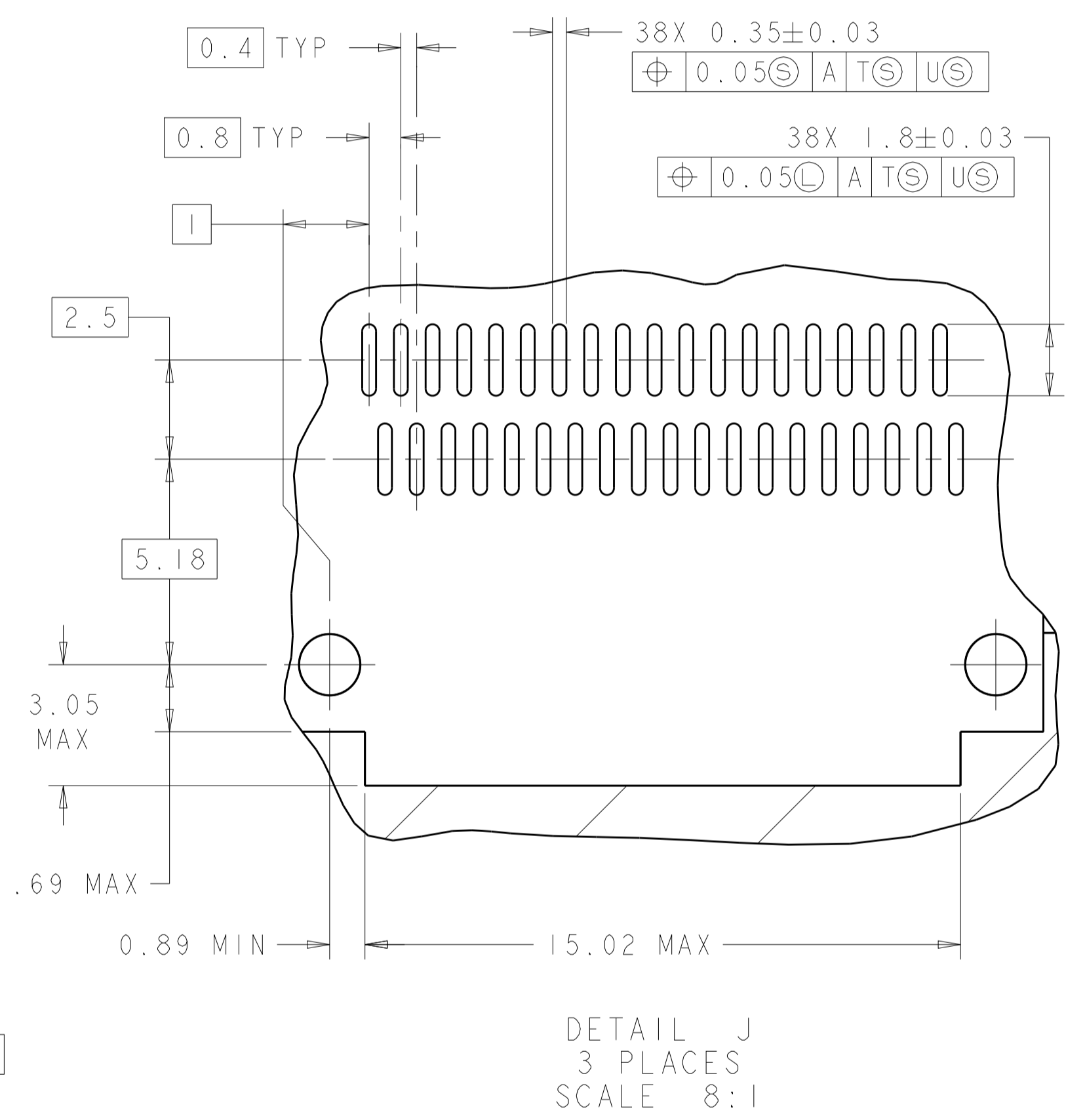
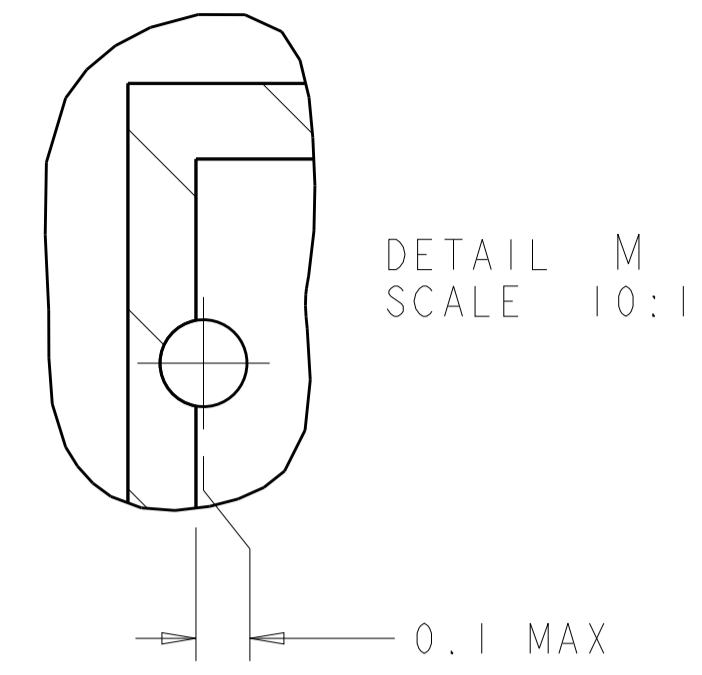
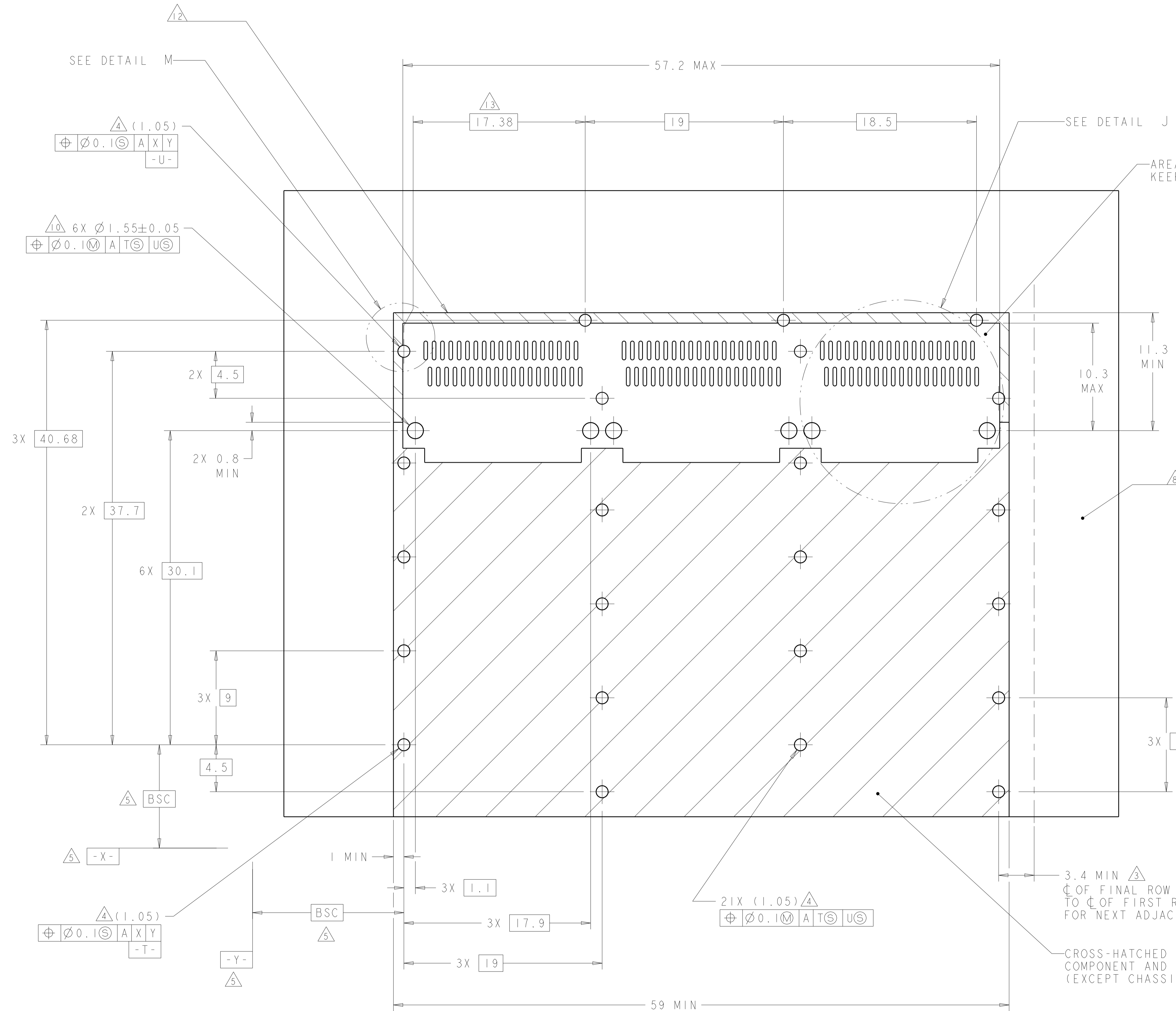


BELLY TO BELLY CONFIGURATION SIMILAR
 TO ONE SIDED EXCEPT WHERE NOTED
 SCALE 2:1



THIS DRAWING IS A CONTROLLED DOCUMENT.		OWN: RINSEN SUN 23FEB2012	
DIMENSIONS: mm		CHK: DENNY ZHU 23FEB2012	
TOLERANCES UNLESS OTHERWISE SPECIFIED:		APVD: AILEY CAI 23FEB2012	NAME: 1X3 CAGE ASSEMBLY, BEHIND BEZEL, W/ HEAT SINKS, CONDUCTIVE GASKET, QSFP
0 PLC ±	1 PLC ±0.1	PRODUCT SPEC	SIZE: CAGE CODE DRAWING NO
2 PLC ±0.1	3 PLC ±0.013	108-2286	RESTRICTED TO
4 PLC ±0.0001	ANGLES ±	APPLICATION SPEC	A100779C=2174769
MATERIAL: -	FINISH: -	114-13218	SCALE: 4:1 SHEET 3 OF 5 REV B
CUSTOMER DRAWING		WEIGHT: -	

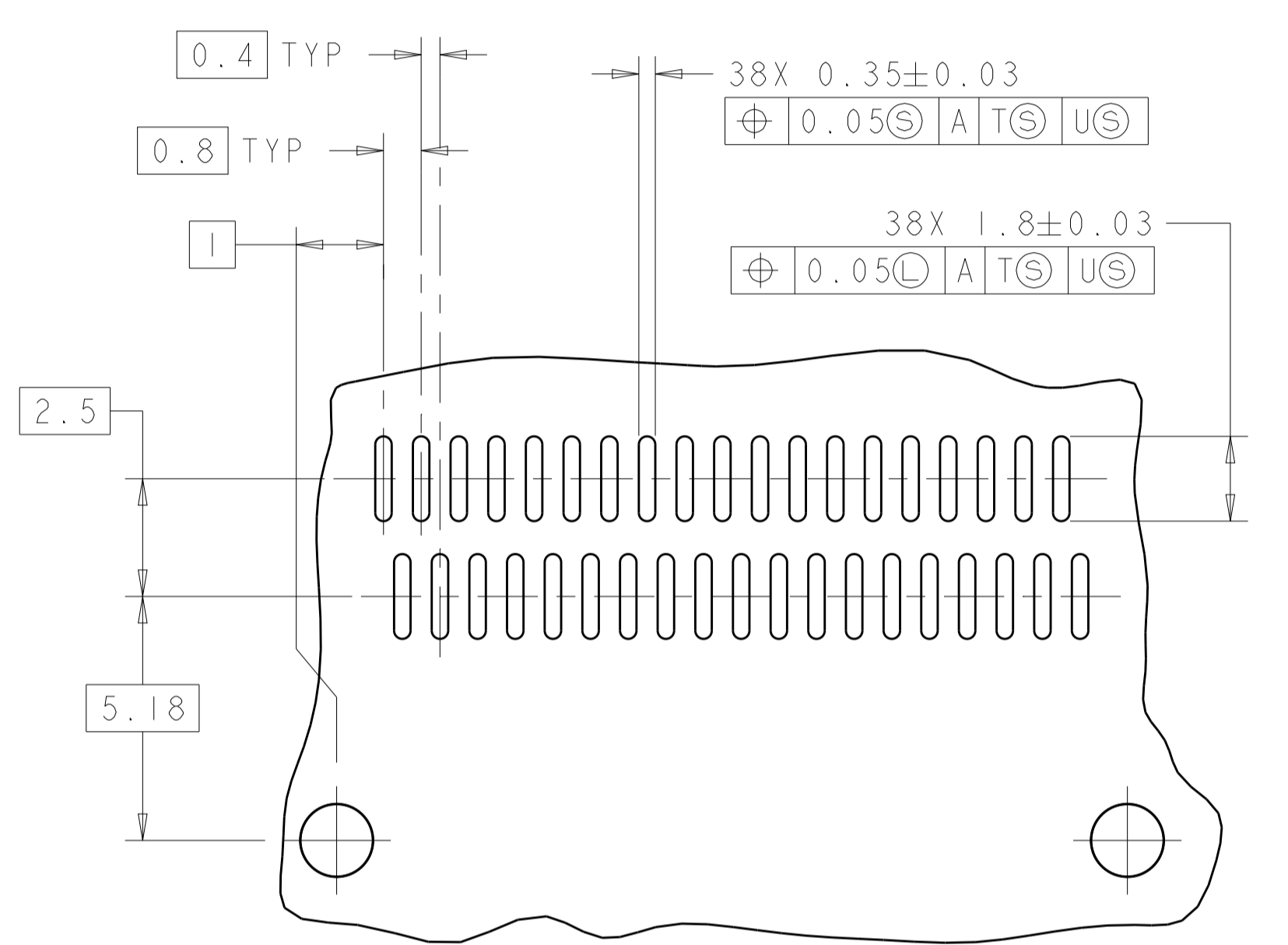
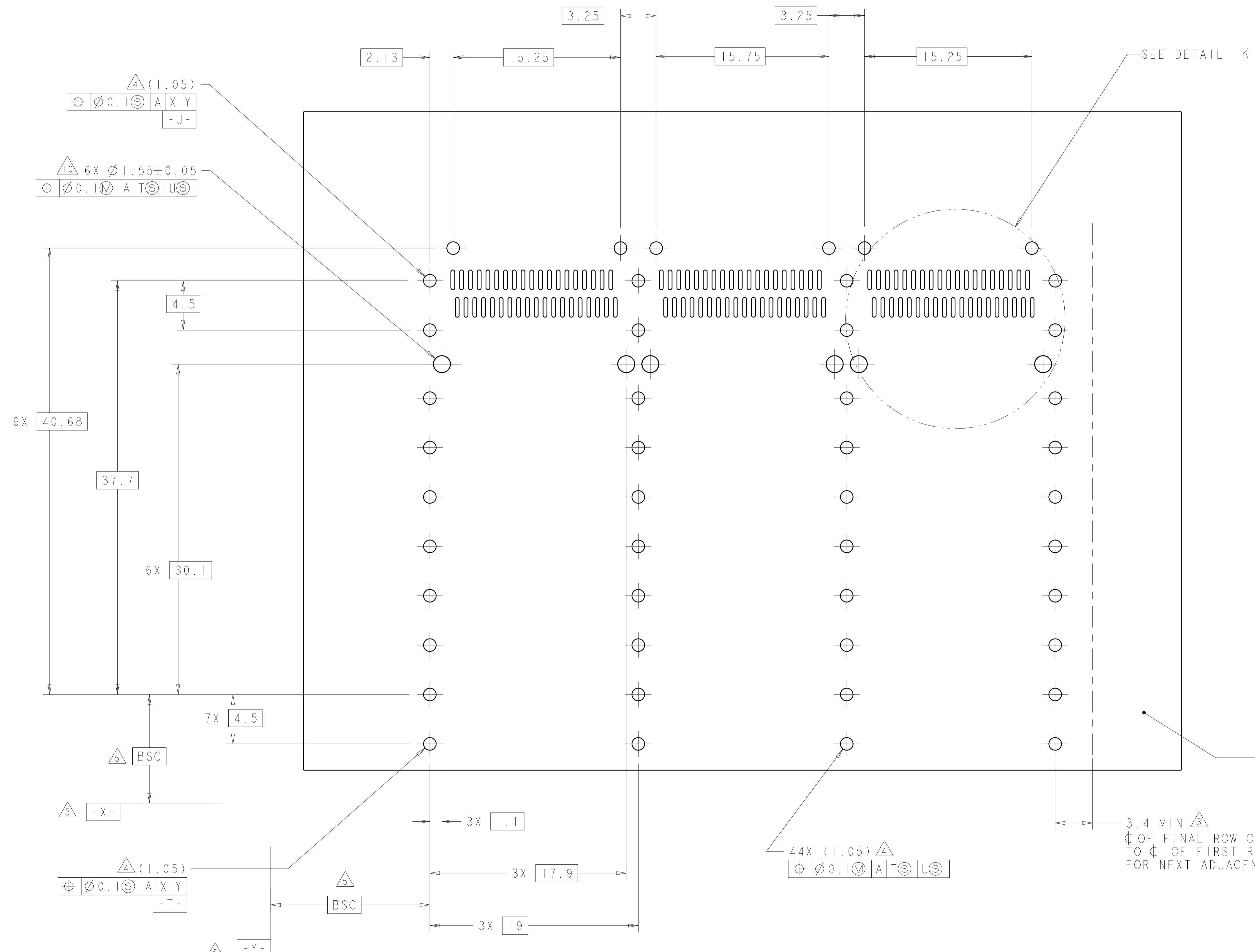
LOC	DIST	REVISIONS			
GP	00	REV	DATE	BY	APPV
-	-	SEE SHEET 1	-	-	-



RECOMMENDED PC BOARD LAYOUT
 SINGLE SIDE MOUNT CONFIGURATION
 SCALE 5:1

THIS DRAWING IS A CONTROLLED DOCUMENT.		OWN: KINSEN SUN 23FEB2012	TE Connectivity
DIMENSIONS: mm		CHK: DENNY ZHU 23FEB2012	
TOLERANCES UNLESS OTHERWISE SPECIFIED:		APVD: ALEY CAI 23FEB2012	NAME: 1X3 CAGE ASSEMBLY, BEHIND BEZEL, W/ HEAT SINKS, CONDUCTIVE GASKET, QSFP
0 PLC \pm	1 PLC ± 0.1	PRODUCT SPEC	108-2286
2 PLC ± 0.1	3 PLC ± 0.013	APPLICATION SPEC	114-13218
4 PLC ± 0.0001	ANGLES \pm	WEIGHT	-
MATERIAL	FINISH	CUSTOMER DRAWING	SCALE 4:1 SHEET 4 OF 5 REV B

LOC	DIST	REV	DATE	BY	APPD
GP	00				
REVISIONS			DESCRIPTION	DATE	DWN
			SEE SHEET 1		



DETAIL K
 3 PLACES
 SCALE 8:1

RECOMMENDED PC BOARD LAYOUT
 BELLY TO BELLY CONFIGURATION
 SEE SHEET 4 FOR COMPONENT
 AND TRACE KEEP-OUTS
 SCALE 5:1

THIS DRAWING IS A CONTROLLED DOCUMENT.		DWN: KINSEN SUN 23FEB2012	TE Connectivity
DIMENSIONS:		CHK: DENNY ZHU 23FEB2012	
mm	0 PLC ±0.1	APVD: AILEY CAI 23FEB2012	NAME: 1X3 CAGE ASSEMBLY, BEHIND BEZEL, W/ HEAT SINKS, CONDUCTIVE GASKET, QSFP
	1 PLC ±0.1	PRODUCT SPEC: 108-2286	SIZE: CAGE CODE DRAWING NO: A100779
	2 PLC ±0.1	APPLICATION SPEC: 114-13218	RESTRICTED TO: -
MATERIAL: -	3 PLC ±0.013	WEIGHT: -	SCALE: 4:1 SHEET 5 OF 5 REV B
FINISH: -	4 PLC ±0.0001	CUSTOMER DRAWING	
ANGLES: -	5 PLC ±0.0001		