



Chipsmall Limited consists of a professional team with an average of over 10 year of expertise in the distribution of electronic components. Based in Hongkong, we have already established firm and mutual-benefit business relationships with customers from,Europe,America and south Asia,supplying obsolete and hard-to-find components to meet their specific needs.

With the principle of “Quality Parts,Customers Priority,Honest Operation,and Considerate Service”,our business mainly focus on the distribution of electronic components. Line cards we deal with include Microchip,ALPS,ROHM,Xilinx,Pulse,ON,Everlight and Freescale. Main products comprise IC,Modules,Potentiometer,IC Socket,Relay,Connector.Our parts cover such applications as commercial,industrial, and automotives areas.

We are looking forward to setting up business relationship with you and hope to provide you with the best service and solution. Let us make a better world for our industry!



## Contact us

Tel: +86-755-8981 8866 Fax: +86-755-8427 6832

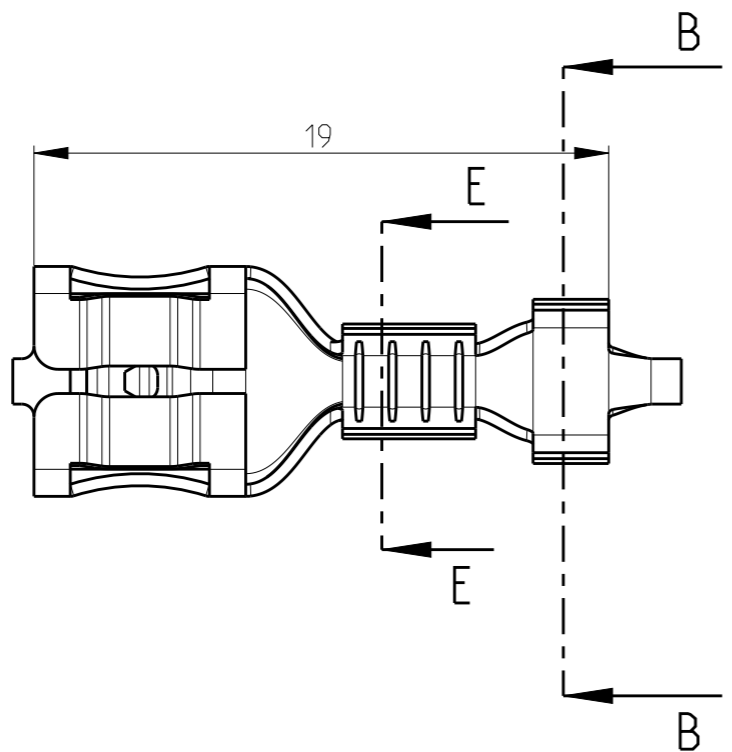
Email & Skype: info@chipsmall.com Web: www.chipsmall.com

Address: A1208, Overseas Decoration Building, #122 Zhenhua RD., Futian, Shenzhen, China

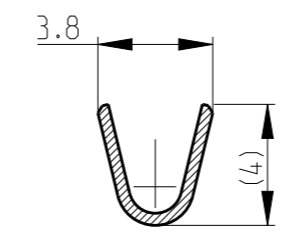
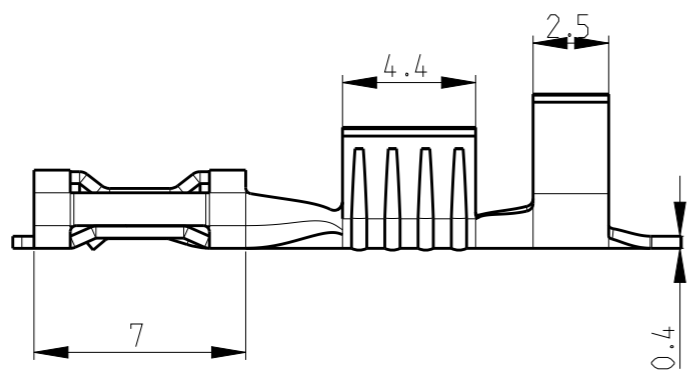
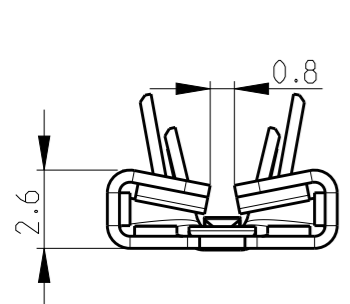


THIS DRAWING IS UNPUBLISHED. RELEASED FOR PUBLICATION 20  
 © COPYRIGHT 20 BY TYCO ELECTRONICS CORPORATION ALL RIGHTS RESERVED.

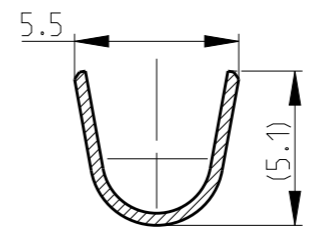
LOC	DIST	REVISIONS					
		P	LTR	DESCRIPTION	DATE	DWN	APVD
-	-	A		REV.A RELEASE BASED ON REV.3	24OCT2014	DL	TD
		A1		RELEASE PER ECR-14-018864	24DEC2014	DL	TD
		A2		RELEASE PER ECR-15-004911	321MAR2015	DL	TD
		A3		RELEASE PER ECR-16-008480	12JUN2016	JJ	TD



- NOTE:
- CONTINUOUS STRIP ON REELS
  - MATING TAB ACCORDING TO UL310 AND IEC61210 NORM. (WIDTH\*THICKNESS IS 6.3\*0.8mm)
  - WIRE SIZE IS #18-#14 AWG(1.0-2.5 sqmm)
  - INSULATION RANGE IS  $\varnothing$ 3-4.3mm
  - CUT-OFF TAB LENGTH 0.5mm MAX.
  - PRELIMINARY NOT FOR PRODUCTION.

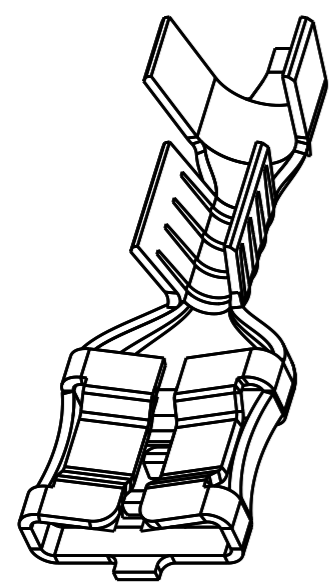



SECTION E-E



SECTION B-B

Pre-Tin Plated	CuNiSi	2178300-3	6
Pre-Tin Plated	BRASS	2178300-2	6
Pre-NICKEL	Steel	2178300-1	
FINISH	MATERIAL	PART NO.	



THIS DRAWING IS A CONTROLLED DOCUMENT.		DWN VIBHUTHI 29NOV2012	 TE Connectivity	
DIMENSIONS: mm		CHK SUBHASH M 29NOV2012		
TOLERANCES UNLESS OTHERWISE SPECIFIED:		APVD SURESH T N 29NOV2012	NAME 6.3 SRS F-SPRING LIF RECEPTACLE	
0 PLC ±0.5		PRODUCT SPEC 108-64027	SIZE A3	
1 PLC ±0.5		APPLICATION SPEC 114-64027	CAGE CODE 00779	DRAWING NO C-2178300
2 PLC ±0.25		WEIGHT -	RESTRICTED TO -	
3 PLC ±		MATERIAL SEE TABLE	SCALE 4:1	
4 PLC ±			SHEET 1 OF 1	
ANGLES ±1°		Customer Drawing		REV A3
FINISH SEE TABLE				