



Chipsmall Limited consists of a professional team with an average of over 10 year of expertise in the distribution of electronic components. Based in Hongkong, we have already established firm and mutual-benefit business relationships with customers from,Europe,America and south Asia,supplying obsolete and hard-to-find components to meet their specific needs.

With the principle of “Quality Parts,Customers Priority,Honest Operation,and Considerate Service”,our business mainly focus on the distribution of electronic components. Line cards we deal with include Microchip,ALPS,ROHM,Xilinx,Pulse,ON,Everlight and Freescale. Main products comprise IC,Modules,Potentiometer,IC Socket,Relay,Connector.Our parts cover such applications as commercial,industrial, and automotives areas.

We are looking forward to setting up business relationship with you and hope to provide you with the best service and solution. Let us make a better world for our industry!



Contact us

Tel: +86-755-8981 8866 Fax: +86-755-8427 6832

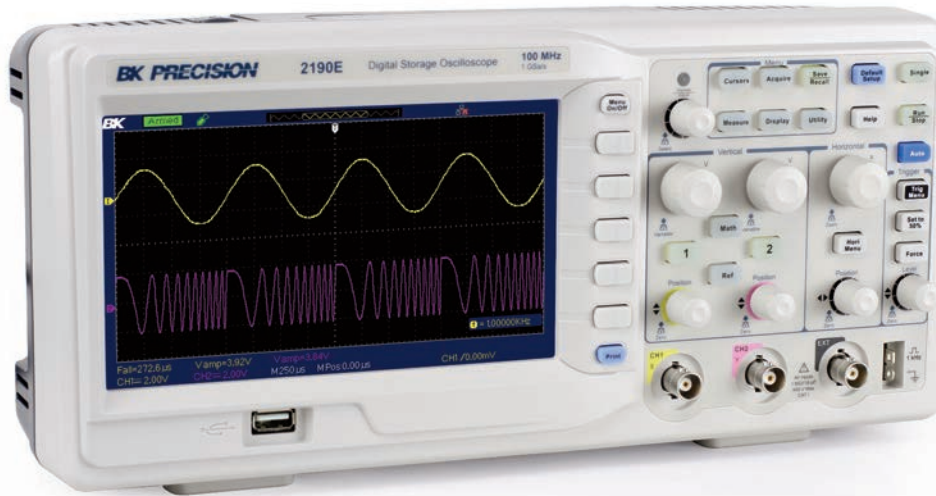
Email & Skype: info@chipsmall.com Web: www.chipsmall.com

Address: A1208, Overseas Decoration Building, #122 Zhenhua RD., Futian, Shenzhen, China



Data Sheet

100 MHz Digital Storage Oscilloscope Model 2190E



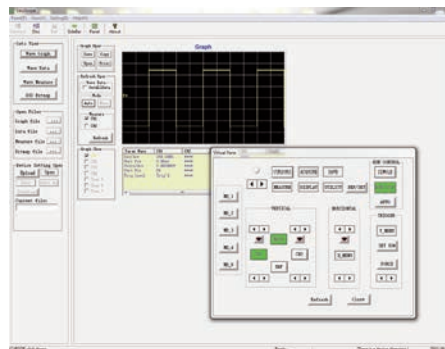
The 2190E combines performance and value all in one portable solution. With 100 MHz bandwidth and 1 GSa/s sample rate, these oscilloscopes offer advanced triggering capabilities, long waveform memory up to 40,000 points, and extensive features such as pass/fail limit testing, digital filtering, waveform recorder, and 32 automatic measurements.

Engineered to allow you to see more of your signal under test, the 2190E widescreen 7" TFT display offers a significantly larger viewing area than typical economy oscilloscopes (5.7").

Maximize productivity with PC connectivity via LAN, and USB. The downloadable PC software lets you easily capture, save, and analyze measurement results. All oscilloscope parameters can be controlled via a PC without the need for programming.

The 2190E oscilloscope is ideal for applications in education, design and debug, service and repair.

PC connectivity

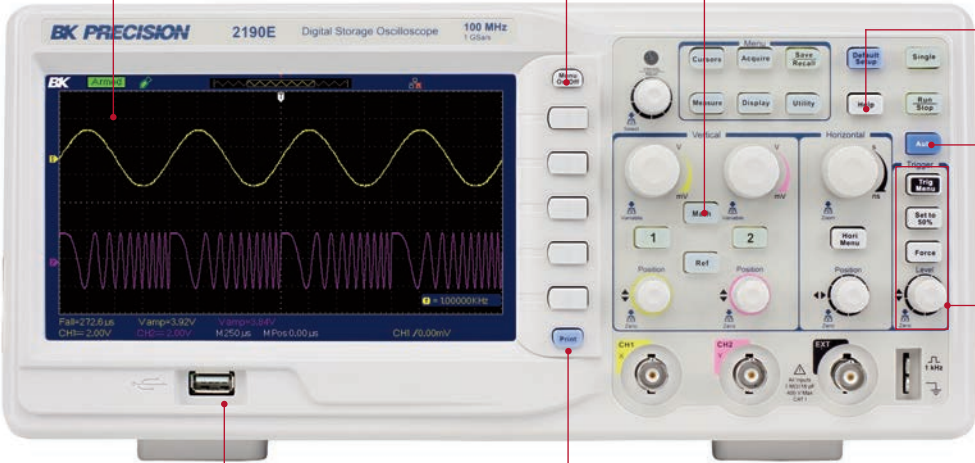


PC software is provided (free download at B&K Precision's website at www.bkprecision.com) for seamless integration between the oscilloscope and PC. Capture and transfer waveforms, screen images, setups and measurement results to a Windows PC via the USB device port on the back of the instrument. A USB host port on the front and rear allows for quick and easy screen saving.

Features & Benefits

- 100 MHz, 1 GSa/s sample rate
- 800x480 pixel 7" TFT color display
- Long waveform memory up to 40,000 points
- Five different math functions – Add, Subtract, Multiply, Divide, and FFT
- Versatile triggering capabilities including pulse width, line-selectable video, slope, and alternating trigger
- 32 automatic measurements
- Advanced tools include digital filter with adjustable limits, pass/fail testing, and waveform recorder mode
- 12 different language user interfaces and context sensitive help
- Special EDU mode allows educators to disable Auto set button, Measure menu, and Cursors menu
- Front panel USB host port for saving and recalling waveform setups, data, and screen shots on a USB flash drive
- LAN and USBTMC-compliant USB device port for remote PC control
- GPIB connectivity with optional USB-to-GPIB adapter

Front panel



Widescreen display
The 7" widescreen color display lets you see more of your signal.

Menu On/Off button
Configure the menu parameters and hide the menu with the push of a button to view your signal in full screen.

Waveform analysis with math and FFT
Analyze your signals with add, subtract, multiply, and divide functions. View the signal's frequency spectrum and perform harmonic distortion analysis.

Context sensitive help
A pop up window will display the functionality of a control while help mode is active.

Auto setup
Vertical, horizontal, and trigger controls are automatically adjusted for fast signal display.

Advanced triggering
Isolate the signal with advanced triggering including pulse width and selectable video trigger.

USB host port
Connect your USB flash drive to conveniently store and recall waveform data, setups, and screenshots.

Print button
Simply press the Print button to save a screenshot in bitmap format to a USB flash drive.

Rear panel



Security loop
Use the built-in security loop to secure your instrument to your location.

Kensington security slot
Helps to secure your oscilloscope and prevent theft.

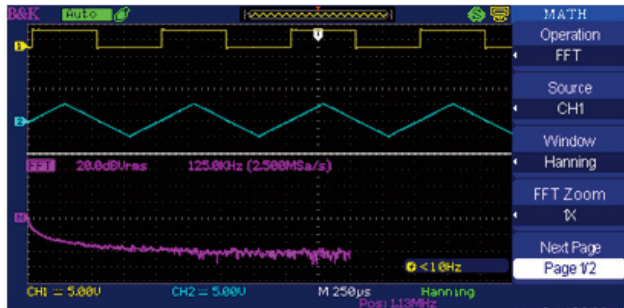
Communication
LAN, and USB ports enable remote control from a PC

WARNING
TO AVOID ELECTRIC SHOCK THE POWER CORD PROTECTIVE GROUNDING CONDUCTOR MUST BE CONNECTED TO GROUND. HAZARDOUS VOLTAGE INSIDE. DO NOT REMOVE THE COVER UNLESS BY SPECIFIED PERSONNEL.

VOLTAGE RANGE 100-240V 100-120V
FREQUENCY 50-60Hz 400Hz
POWER 30W Max.

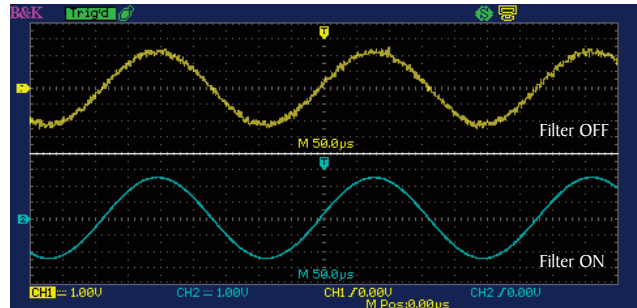
The tools you need

Powerful measurement functions



Display and measure the input signal's frequency spectrum. Select one of the 4 FFT windows: Rectangular, Hanning, Hamming, and Blackman. Use cursors to measure the spectral component's magnitude and frequency.

Digital filtering



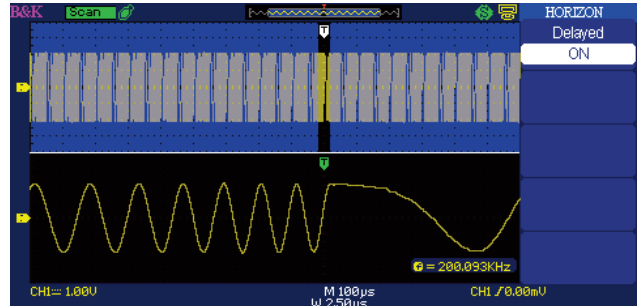
Filter out unwanted signal components such as various types of noise with built-in digital filters. Choose from Low-Pass, High-Pass, Band-Pass, and Band-Stop filters.

Waveform recorder



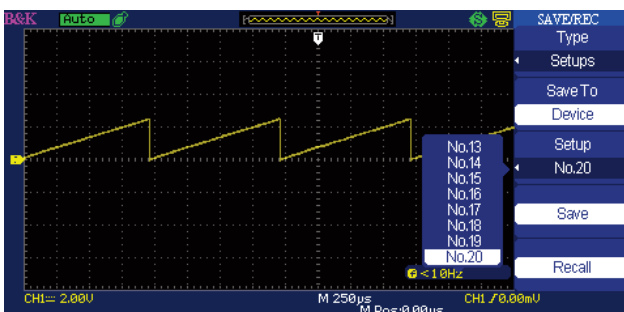
Monitor and analyze long-term signal behavior by recording data continuously over an extensive period of time and playing it back for post acquisition analysis. Data is recorded in a sequence of up to 2500 frames.

Delayed sweep/zoom



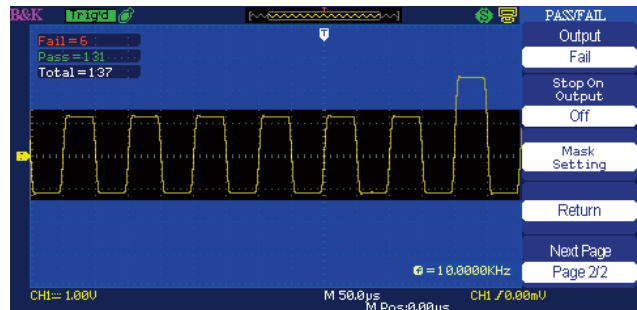
Use the oscilloscope's delayed sweep feature to zoom in a particular area of a signal in real time while viewing the entire captured waveform simultaneously.

Large internal storage



Minimize debug time by saving and recalling setups and waveforms from internal memory. Save and recall up to 20 different oscilloscope setups and 10 different waveforms.

Pass/Fail testing



Generate user-defined pass/fail limits to quickly identify go/no go test results.

Digital Storage Oscilloscope
Model 2190E

Model	2190E
Performance Characteristics	
Bandwidth	100 MHz
Real Time Sampling Rate	Single Channel: 1 GSa/s Dual Channel: 500 MSa/s (for timebase faster than 250 ns/div)
Channels	2
Rise time	< 3.5 ns
Record Length	40,000 points when timebase is 2.5 ns to 50 ns (20,000 points for 100 ns to 50 ms timebase), 20,000 points for dual channel operation
Vertical Resolution	8 bit
Vertical Sensitivity	2 mV/div - 10 V/div (1-2-5 order)
DC Gain Accuracy	< ±3.0%: 5 mV/div to 10 V/div in fixed gain ranges < ±4.0%: 2 mV/div in variable gain ranges
Maximum input voltage	400 V (DC+AC pk-pk, 1 MΩ input impedance, X10), CAT I
Position Range	2 mV - 200 mV: ±1.6 V 206 mV - 10 V: ±40 V
Horizontal Scan Range	2.5 ns/div - 50 s/div Scan mode: 100 ms/div - 50 s/div (1 - 2.5 - 5 sequence)
Timebase Accuracy	±50 ppm measured over 1 ms interval
Input Coupling	AC, DC, GND
Input Impedance	1 MΩ ±2% 16 pF ±3 pF
Vertical and Horizontal Zoom	Vertically or horizontally expand or compress a live or stopped waveform
I/O interface	USB host port on front panel supports USB flash drives, LAN, and USB (USBTMC-compliant) device port for connection to PC, Pass/Fail output
Acquisition Modes	
Sample	Display sample data only
Peak Detect	Capture the maximum and minimum values of a signal
Average	Waveform averaged, selectable from 4, 16, 32, 64, 128, 256
Scan Mode	For time base settings 0.1 s/div - 50 s/div
Trigger System	
Trigger Types	Edge, Pulse Width, Video*, Slope, Alternating *Support signal Formats: PAL/SECAM, NTSC Trigger condition : odd field, even field, all lines, or line number
Trigger Modes	Auto, Normal, Single
Trigger Coupling	AC, DC, LF reject, HF reject
Trigger Source	CH1, CH2, EXT, EXT/S, AC Line
Pulse Width Trigger	Trigger Modes: (>, <, =) Positive Pulse Width, (>, <, =) Negative Pulse Width
Slope Trigger	(>, <, =) Positive slope, (>, <, =) Negative slope Time: 20 ns - 10 s

Hardware Frequency Counter	
Reading Resolution	1 Hz
Accuracy	±0.01%
Range	DC Couple, 10 Hz to 100 MHz
Signal Types	All trigger signals (except pulse width trigger and video trigger)
Waveform Math and Measure	
Math operation	Add, Subtract, Multiply, Divide, FFT
FFT	Window mode: Hanning, Hamming, Blackman, Rectangular Sampling points: 1024
Measure	Vpp, Vmax, Vmin, Vamp, Vtop, Vbase, Vavg, Mean, Crms, Vrms, ROV, FOV, RPRE, FPPE, FREQ, Period, Rise Time, Fall Time, BWid, + Wid, - Wid, + Duty, - Duty, Phase, FRR, FRF, FFR, FFF, LRR, LRF, LFR, LFF
Display System	
Display	7 in. Color TFT, 800 x 480 resolution, 64K color
Display Contrast (Typical state)	150:1
Backlight Intensity (Typical state)	300 nit
Display Area	8 x 18 div
Display Mode	Dots, Vector
Persistence	Off, 1 sec, 2 sec, 5 sec, Infinite
Menu Display Timer	2 sec, 5 sec, 10 sec, 20 sec, Infinite
Screen-Saver	Off, 1 min, 2 min, 5 min, 10 min, 15 min, 30 min, 1 hour, 2 hour, 5 hour
Waveform Interpolation	Sin(x)/x, Linear
Display Color Mode	Normal, Invert
Environment	
Temperature	Operating: 50° F to 104° F (10° C to 40° C) Not operating: -4° F to 140° F (-20° C to 60° C)
Humidity	Operating: 85% RH, 104° F (40° C) Not operating: 85% RH, 149° F (65° C)
Altitude	Operating: 9,842 ft (3,000 m) Not operating: 50,085 ft (15,266 m)
Electromagnetic Compatibility	EMC Directive 2004/108/EC, EN61326:2006
Safety	Low voltage directive 2006/95/EC, EN61010-1:2001
General	
AC Input	100-240 VAC, CAT II, 50 VA max, 45 Hz to 440 Hz
Dimension (WxHxD)	12.7 x 5.35 x 5.24 inches (323 x 136 x 157 mm)
Weight	5.5 lbs. (2.5 kg)
One-Year Warranty	
Standard Accessories	User Manual, 10:1 Probe Set (2 pieces), Power Cord, USB Interface Cable
Optional Accessories	USB-to-GPIB adapter (model AK40G)