



Chipsmall Limited consists of a professional team with an average of over 10 year of expertise in the distribution of electronic components. Based in Hongkong, we have already established firm and mutual-benefit business relationships with customers from,Europe,America and south Asia,supplying obsolete and hard-to-find components to meet their specific needs.

With the principle of “Quality Parts,Customers Priority,Honest Operation,and Considerate Service”,our business mainly focus on the distribution of electronic components. Line cards we deal with include Microchip,ALPS,ROHM,Xilinx,Pulse,ON,Everlight and Freescale. Main products comprise IC,Modules,Potentiometer,IC Socket,Relay,Connector.Our parts cover such applications as commercial,industrial, and automotives areas.

We are looking forward to setting up business relationship with you and hope to provide you with the best service and solution. Let us make a better world for our industry!



Contact us

Tel: +86-755-8981 8866 Fax: +86-755-8427 6832

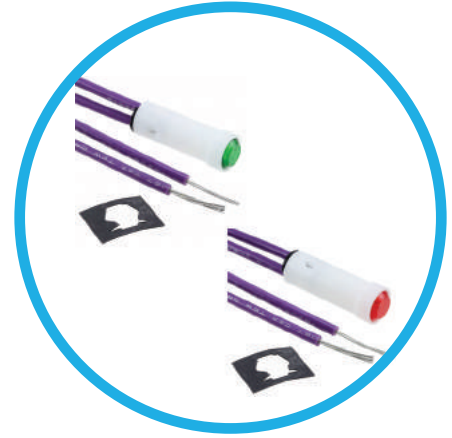
Email & Skype: info@chipsmall.com Web: www.chipsmall.com

Address: A1208, Overseas Decoration Building, #122 Zhenhua RD., Futian, Shenzhen, China





2195A Series Non-Relampable Panel Mount Indicator



Description and Features

Mounting: Ø.310 MIN., supplied with push-on speednut SN1287-C

Wire Leads: No. 22 AWG (105°C) 4.40"/4.80" long, stripped .430"/.570"

Lens: Polycarbonate-neon transparent, incandescent-translucent

Housing: White Nylon

Underwriters Laboratories (UL) File No.E20356

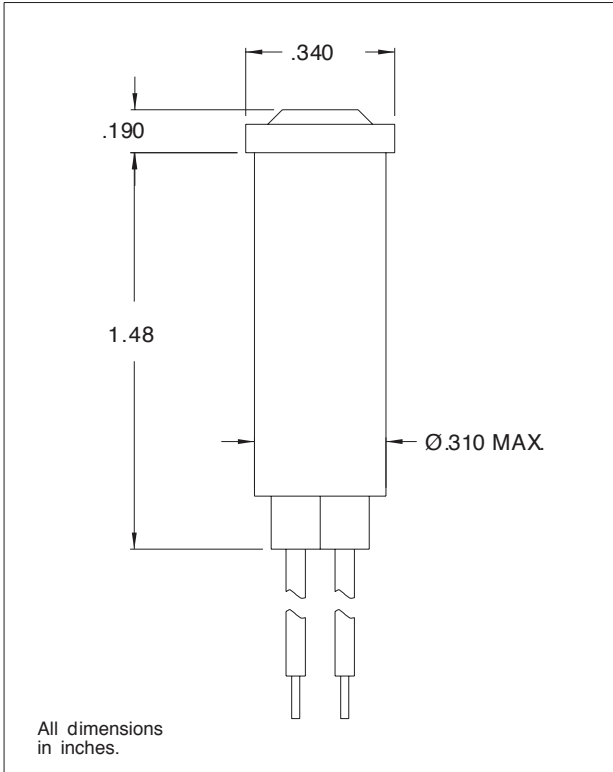
Ordering Data

Lens Color	Incandescent		
	Model No. (6V)	Model No. (12V)	Model No. (28V)
Red	2195A1-6V	2195A1-12V	2195A1-28V
Clear	-	-	-
Amber	2195A3-6V	2195A3-12V	2195A3-28V
White	2195A4-6V	-	-
Green	2195A5-6V	2195A5-12V	2195A5-28V
Blue	-	-	-
Lamp Used	#2112	#2162	#2187
Lead Color	White	Yellow	Purple

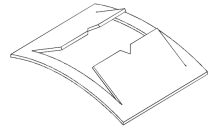
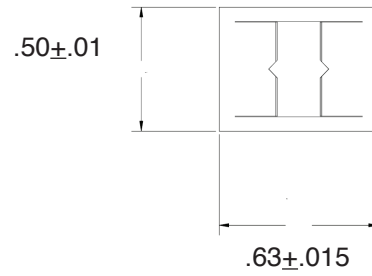
* Incorporates G2B lamp and resistor.

** Incorporates T2B lamp and resistor.

Product Dimensions



Speed Nut SN1287-C



All dimensions
in inches.

Compliances and Approvals

