



Chipsmall Limited consists of a professional team with an average of over 10 year of expertise in the distribution of electronic components. Based in Hongkong, we have already established firm and mutual-benefit business relationships with customers from,Europe,America and south Asia,supplying obsolete and hard-to-find components to meet their specific needs.

With the principle of "Quality Parts,Customers Priority,Honest Operation,and Considerate Service",our business mainly focus on the distribution of electronic components. Line cards we deal with include Microchip,ALPS,ROHM,Xilinx,Pulse,ON,Everlight and Freescale. Main products comprise IC,Modules,Potentiometer,IC Socket,Relay,Connector.Our parts cover such applications as commercial,industrial, and automotives areas.

We are looking forward to setting up business relationship with you and hope to provide you with the best service and solution. Let us make a better world for our industry!



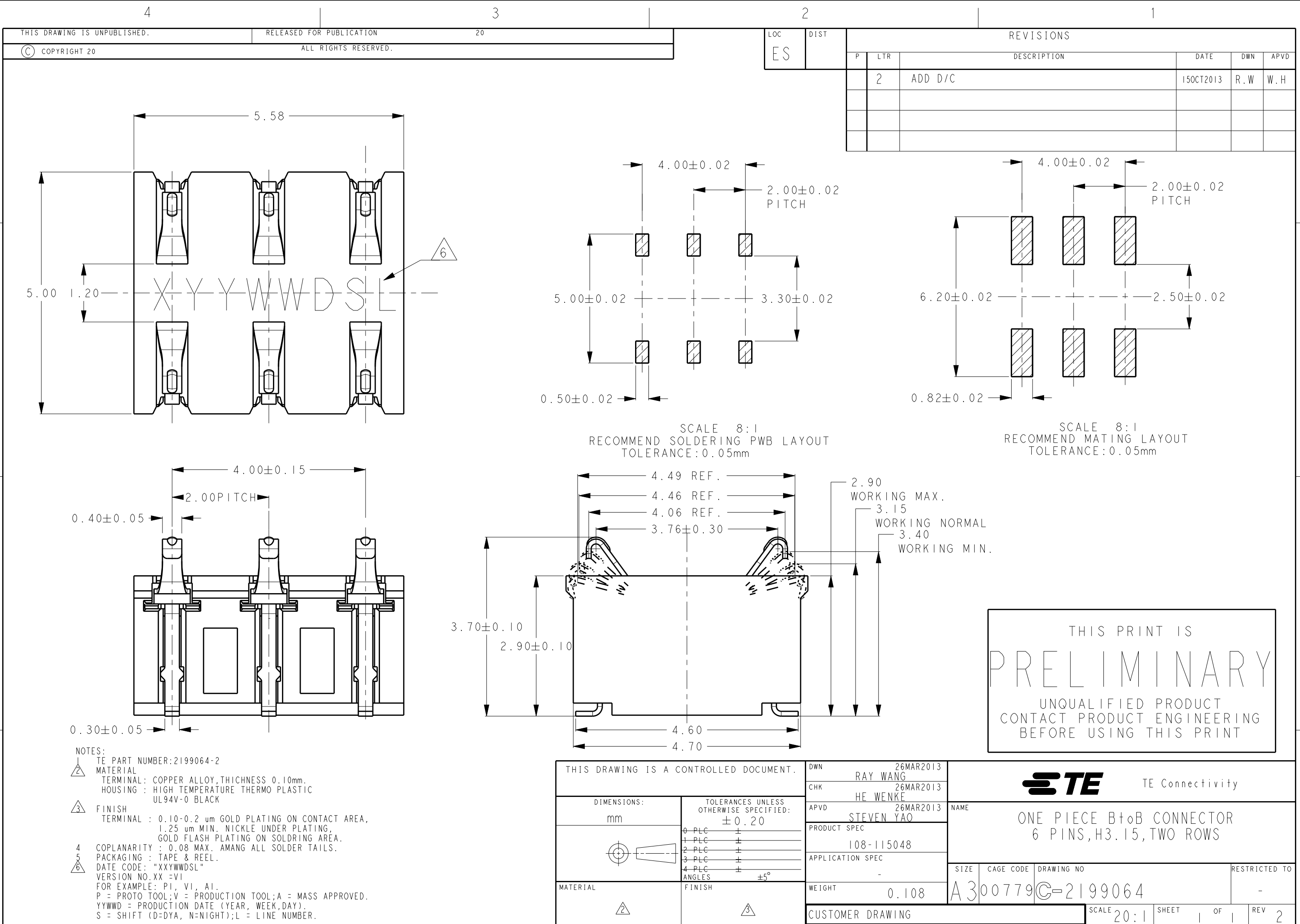
Contact us

Tel: +86-755-8981 8866 Fax: +86-755-8427 6832

Email & Skype: info@chipsmall.com Web: www.chipsmall.com

Address: A1208, Overseas Decoration Building, #122 Zhenhua RD., Futian, Shenzhen, China





THIS DRAWING IS UNPUBLISHED.

RELEASED FOR PUBLICATION

20

LOC

DIST

REVISIONS

© COPYRIGHT 20

ALL RIGHTS RESERVED.

ES

P

LTR

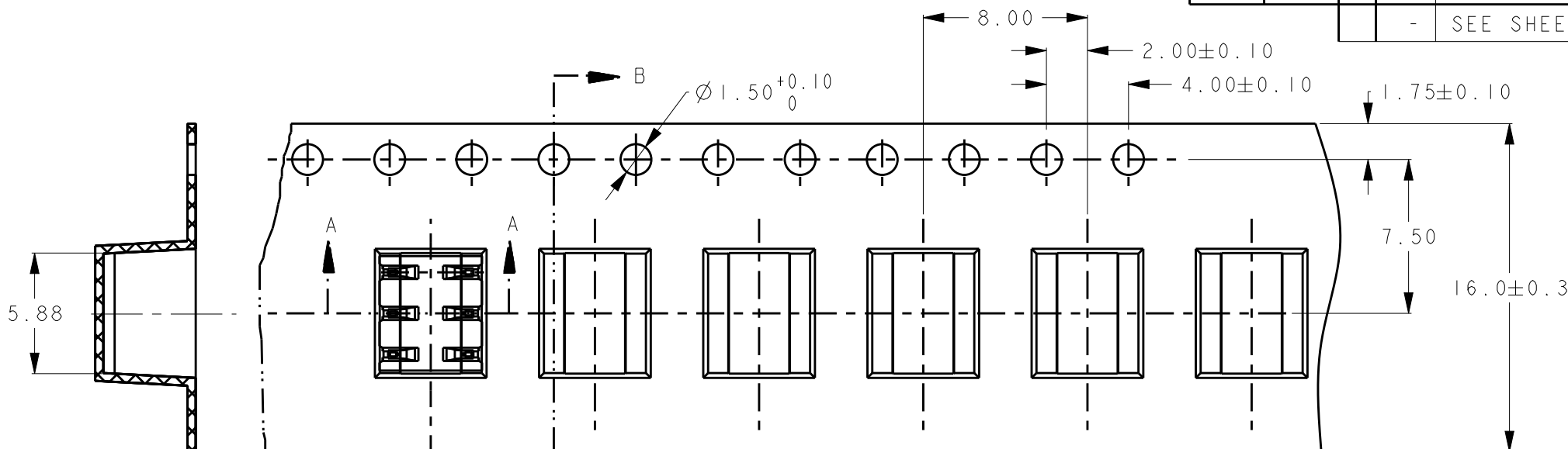
DESCRIPTION

DATE

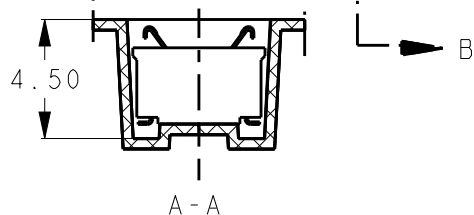
DWN

APVD

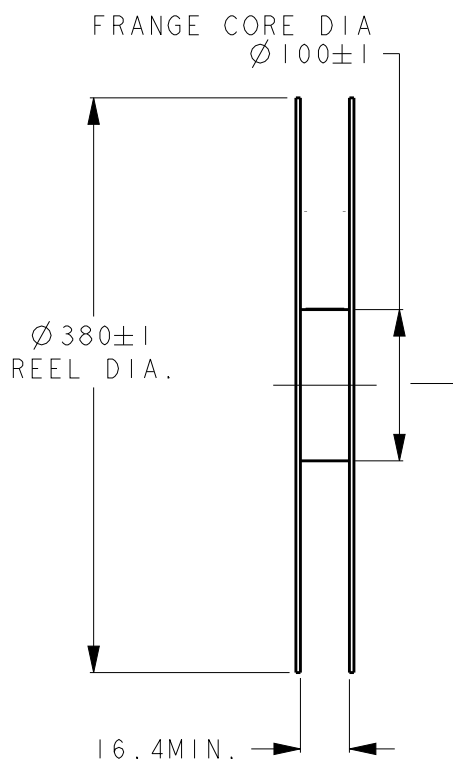
SEE SHEET 1



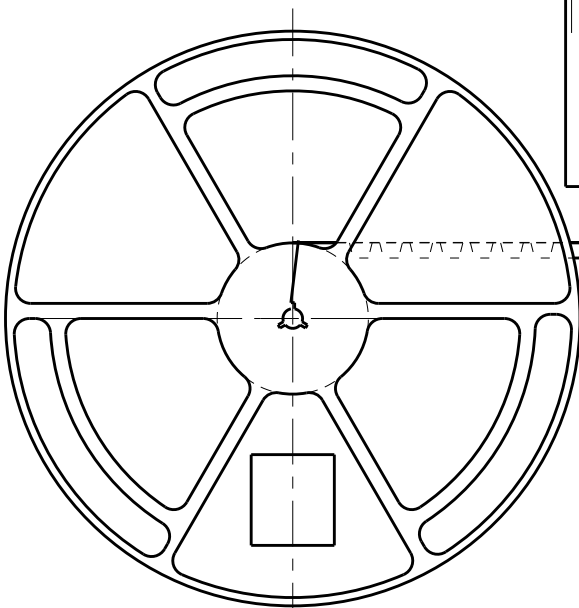
B-B



A-A



THIS PRINT IS
PRELIMINARY
UNQUALIFIED PRODUCT
CONTACT PRODUCT ENGINEERING
BEFORE USING THIS PRINT



40mm MIN. WITHOUT CHARGE
WITH PRODUCT CHARGE 2400PCS
100mm MIN. WITHOUT CHARGE
SEALED WITH COVER TAPE

165°21.2'~180°
PEELING ANGLE
0.1~1.3N(300mm/min±10%)
PEELING STRENGTH

250mm MIN.

NOTES:
1. TAPE MATERIAL:P.S; THICKNESS 0.4mm.
2. QUANTITY PER REEL:2400PCS.

THIS DRAWING IS A CONTROLLED DOCUMENT.

DWN 26MAR2013

RAY WANG

CHK 26MAR2013

HE WENKE

APVD 26MAR2013

STEVEN YAO

PRODUCT SPEC

-

APPLICATION SPEC

-

WEIGHT

-

CUSTOMER DRAWING



TE Connectivity

NAME
ONE PIECE BtoB CONNECTOR
6 PINS,H3.15,TWO ROWS

SIZE CAGE CODE DRAWING NO RESTRICTED TO

A300779C-2199064

SCALE 20:1

SHEET 2 OF 1

REV 2