



Chipsmall Limited consists of a professional team with an average of over 10 year of expertise in the distribution of electronic components. Based in Hongkong, we have already established firm and mutual-benefit business relationships with customers from,Europe,America and south Asia,supplying obsolete and hard-to-find components to meet their specific needs.

With the principle of "Quality Parts,Customers Priority,Honest Operation,and Considerate Service",our business mainly focus on the distribution of electronic components. Line cards we deal with include Microchip,ALPS,ROHM,Xilinx,Pulse,ON,Everlight and Freescale. Main products comprise IC,Modules,Potentiometer,IC Socket,Relay,Connector.Our parts cover such applications as commercial,industrial, and automotives areas.

We are looking forward to setting up business relationship with you and hope to provide you with the best service and solution. Let us make a better world for our industry!



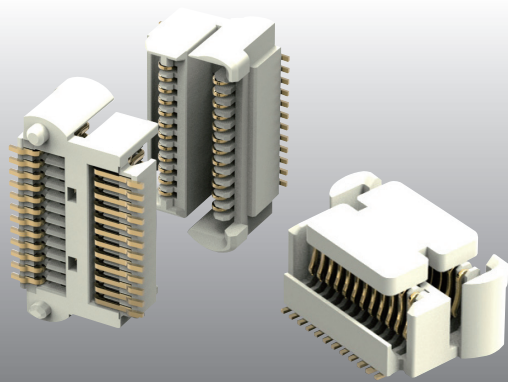
Contact us

Tel: +86-755-8981 8866 Fax: +86-755-8427 6832

Email & Skype: info@chipsmall.com Web: www.chipsmall.com

Address: A1208, Overseas Decoration Building, #122 Zhenhua RD., Futian, Shenzhen, China





Introducing 0.5mm Fine Pitch Hermaphroditic (FPH) Board-to-Board Connector

The 0.5mm FPH board-to-board product is a hermaphroditic "mate-to-itself" interconnect system. By having a design that only requires one part number, the customer can eliminate the need for both a plug and receptacle for board-to-board applications eliminating half the part numbers.

KEY FEATURES

- Hermaphroditic design (mates to itself)
- Easy, reliable mating
- High un-mating forces
- Extreme operating temperature range
- High speeds

APPLICATIONS

- Hard disk drive
- Portable and mobile electronic equipment
- Instrumentation
- POS retail equipment
- Hand-held terminals
- Sensors
- Military or aerospace applications
- Communications and networking
- Data and mass storage
- Motor vehicles
- Metering and energy
- Identification and data capture

MECHANICAL

- Durability: 50 mating cycles in environment
- Mating Force: 42g max per contact pair
- Un-mating Force: 25g min per contact pair
- Wipe length: 1.0mm minimum
- SMT lead co-planarity: 0.08mm maximum

ELECTRICAL

- Current rating per contact: 0.5A maximum
- Dielectric withstanding voltage: 500 volts
- Voltage rating: 50 volts
- Contact resistance: 30 milliohm maximum

MATERIALS

- Housing: Liquid Crystal Polymer, UL 94-VO classified, Color: White (natural)
- Contacts: Copper Alloy
- Plating: Performance-based with gold
- All materials lead-free RoHS compatible

PRODUCT OFFERING

- 2199070-4, 1-2199070-4

PRODUCT DIMENSIONS

- Without post: W 8.75mm x L 5.7±0.2mm x H 3.9mm
- With post: W 8.75mm x L 5.7±0.2mm x H 4.42mm

