



Chipsmall Limited consists of a professional team with an average of over 10 year of expertise in the distribution of electronic components. Based in Hongkong, we have already established firm and mutual-benefit business relationships with customers from,Europe,America and south Asia,supplying obsolete and hard-to-find components to meet their specific needs.

With the principle of “Quality Parts,Customers Priority,Honest Operation,and Considerate Service”,our business mainly focus on the distribution of electronic components. Line cards we deal with include Microchip,ALPS,ROHM,Xilinx,Pulse,ON,Everlight and Freescale. Main products comprise IC,Modules,Potentiometer,IC Socket,Relay,Connector.Our parts cover such applications as commercial,industrial, and automotives areas.

We are looking forward to setting up business relationship with you and hope to provide you with the best service and solution. Let us make a better world for our industry!



Contact us

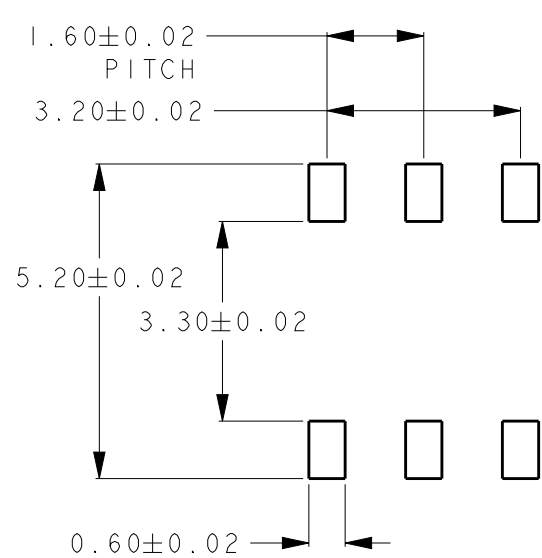
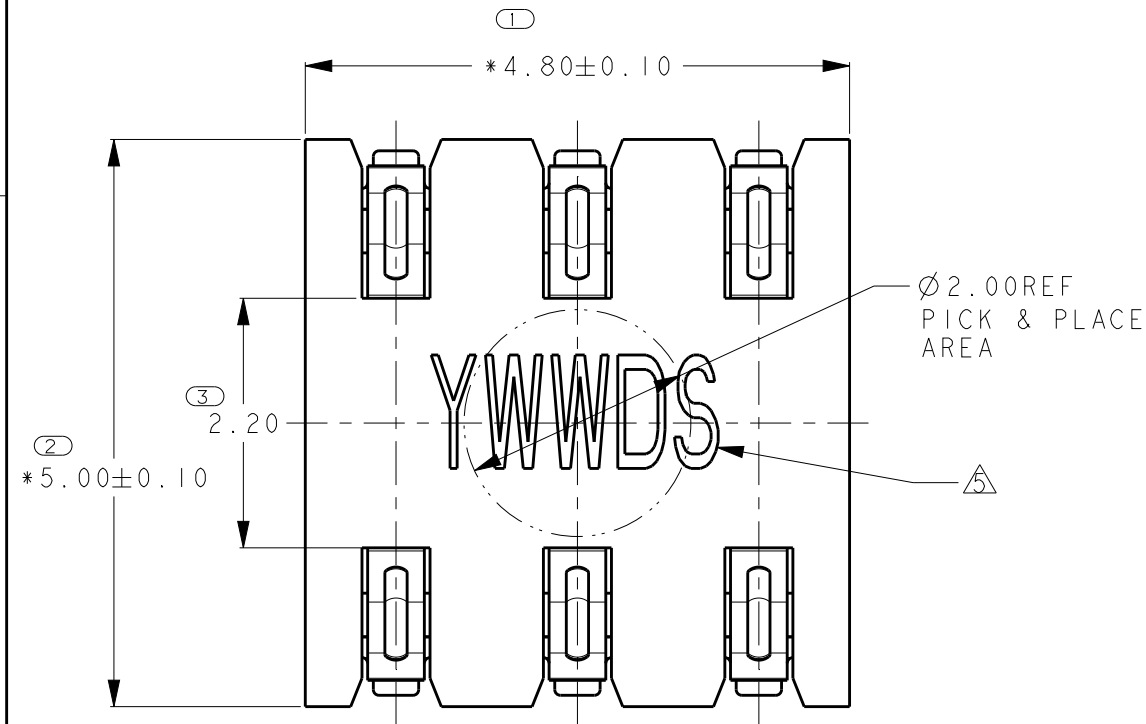
Tel: +86-755-8981 8866 Fax: +86-755-8427 6832

Email & Skype: info@chipsmall.com Web: www.chipsmall.com

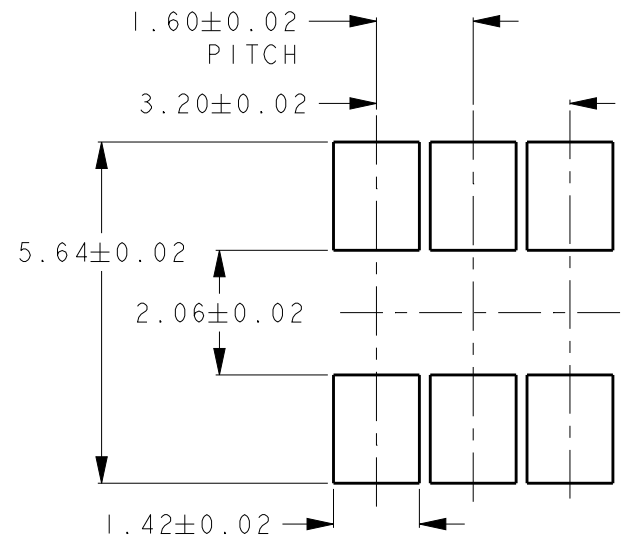
Address: A1208, Overseas Decoration Building, #122 Zhenhua RD., Futian, Shenzhen, China



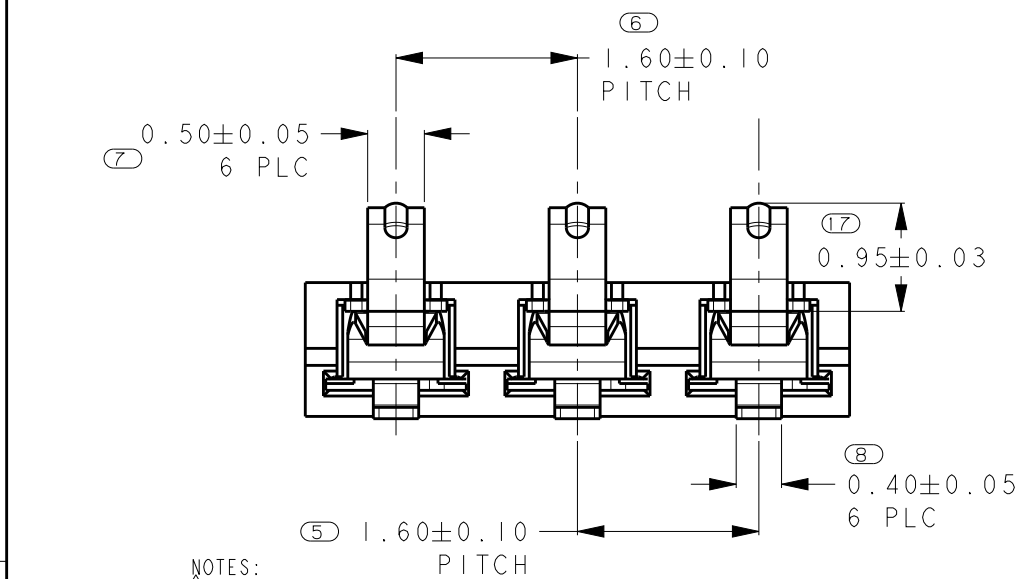
2		1					
LOC ES	DIST	REVISIONS					
		P	LTR	DESCRIPTION	DATE	DWN	APVD
			A	INITIAL	13NOV2013	R.W	W.H



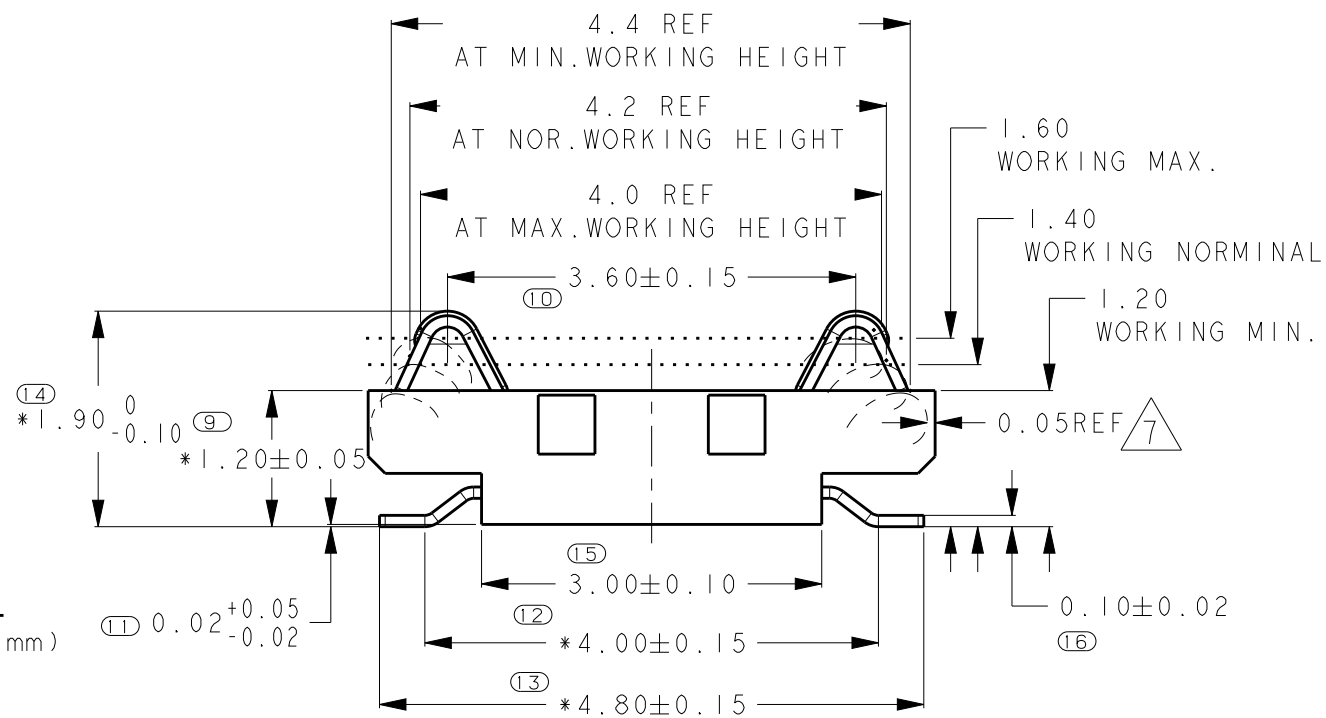
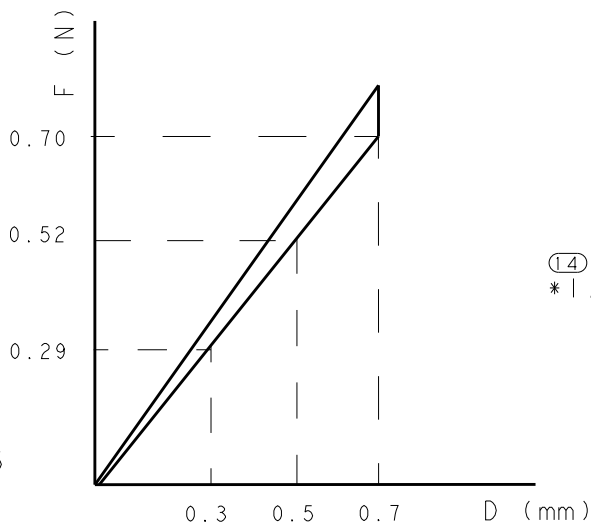
RECOMMEND PWB LAYOUT



RECOMMEND MATING LAYOUT



NORMAL FORCE CURVE



- NOTES:
- MATERIAL
TERMINAL : PHOSPHOR BRONZE C5210HF, THICKNESS 0.10mm.
HOUSING : HIGH TEMPERATURE THERMO PLASTIC
UL94V-0 BLACK
 - FINISH
TERMINAL : 0.1~0.2 μ m GOLD PLATING ON CONTACT AREA,
1.27 MIN. NICKLE UNDER PLATING,
0.025~0.075 μ m GOLD PLATING ON SOLDERING AREA.
 - COPLANARITY : BEFORE REFLOW 0.08 MAX, AFTER REFLOW 0.1 MAX
 - PACKAGING : TAPE & REEL.
 - DATE CODE: "YWWS"
YWWS = PRODUCTION DATE (YEAR, WEEK, DAY).
S = SHIFT (D=DYA, N=NIGHT)
 - CONTACT CAN NOT TOUCH PCB & TAIL WHEN PRESS TO HOUSING SURFACE.
 - CONTACT CAN NOT EXCEED HOUSING EDGE WHEN PRESS TO HOUSING SURFACE
 - * MEANS KEY DIMENSIONS FOR CUSTOMER

THIS DRAWING IS A CONTROLLED DOCUMENT.		DWN	RAY WANG	13NOV2013	TE Connectivity	
		CHK	WENKE HE	13NOV2013		
		APVD	WENKE HE	13NOV2013	NAME	
		PRODUCT SPEC			ONE PIECE BtoB CONNECTOR	
		APPLICATION SPEC			6 PINS, 1.6MM PITCH, H1.4, TWO ROWS	
		WEIGHT			SIZE	CAGE CODE
		CUSTOMER DRAWING			A300779	C-2199170
					DRAWING NO	RESTRICTED TO
					SCALE	SHEET
					20:1	1 OF 2
					REV	A

4

3

2

1

THIS DRAWING IS UNPUBLISHED.

RELEASED FOR PUBLICATION

20

© COPYRIGHT 20

ALL RIGHTS RESERVED.

LOC
ES

DIST

REVISIONS

P

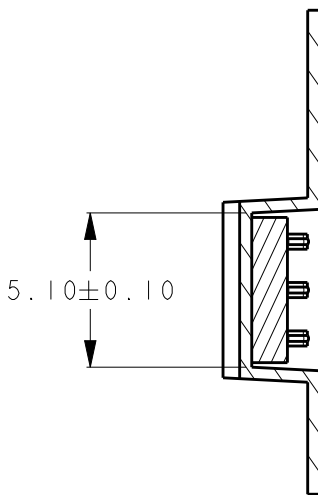
LTR

DESCRIPTION

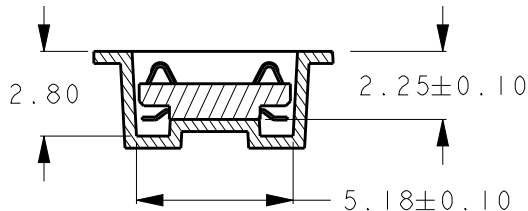
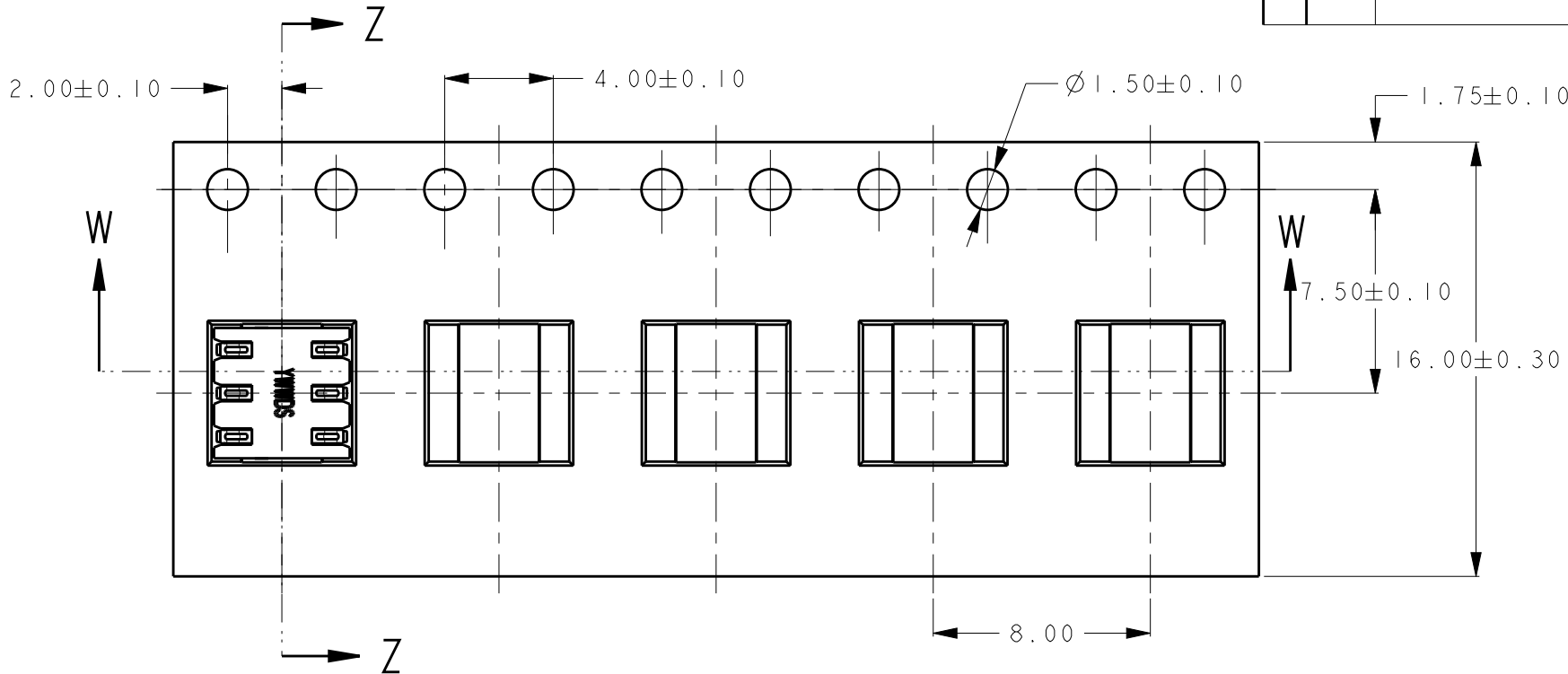
DATE

DWN

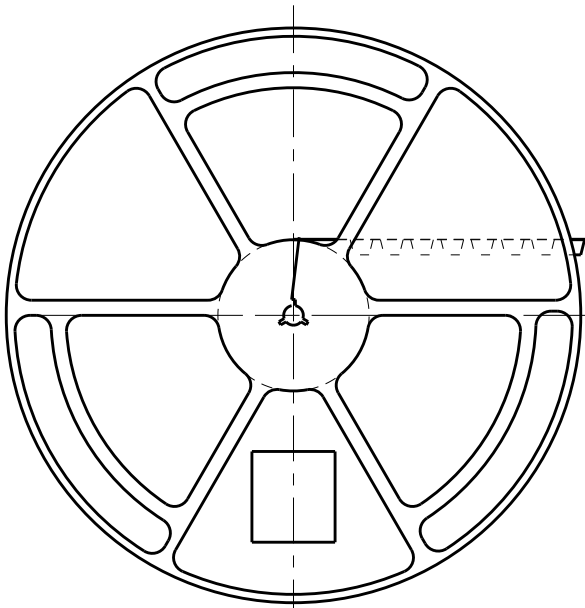
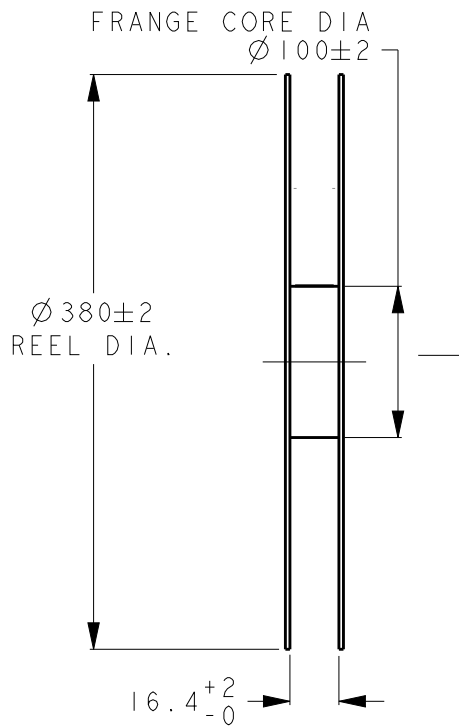
APVD



SECTION Z - Z



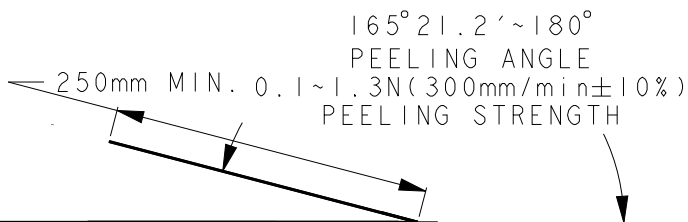
SECTION W - W
SCALE 4:1



40mm MIN.
WITHOUT CHARGE
SEALED WITH COVER TAPE

WITH PRODUCT CHARGE
3500 PCS/1REEL

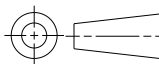
100mm MIN.
WITHOUT CHARGE
SEALED WITH COVER TAPE



NOTES:
1. MATERIAL: P.S CLEAR, 0.4MM THICKNESS.
2. QUANTITY PER REEL: 3500 PIECES.

THIS DRAWING IS A CONTROLLED DOCUMENT.

DIMENSIONS:
mm



MATERIAL

TOLERANCES UNLESS
OTHERWISE SPECIFIED:
±0.20

0-PLC	±
1-PLC	±
2-PLC	±
3-PLC	±
4-PLC	±
ANGLES	±5°

FINISH

DWN

RAY WANG

13NOV2013

CHK

WENKE HE

13NOV2013

APVD

WENKE HE

13NOV2013

PRODUCT SPEC

APPLICATION SPEC

WEIGHT

CUSTOMER DRAWING



TE Connectivity

NAME
ONE PIECE BtoB CONNECTOR
6 PINS, 1.6MM PITCH, H1.4 TWO ROWS

SIZE CAGE CODE DRAWING NO RESTRICTED TO

A300779C-2199170

SCALE 20:1

SHEET 2 OF 2

REV A