



Chipsmall Limited consists of a professional team with an average of over 10 year of expertise in the distribution of electronic components. Based in Hongkong, we have already established firm and mutual-benefit business relationships with customers from,Europe,America and south Asia,supplying obsolete and hard-to-find components to meet their specific needs.

With the principle of "Quality Parts,Customers Priority,Honest Operation,and Considerate Service",our business mainly focus on the distribution of electronic components. Line cards we deal with include Microchip,ALPS,ROHM,Xilinx,Pulse,ON,Everlight and Freescale. Main products comprise IC,Modules,Potentiometer,IC Socket,Relay,Connector.Our parts cover such applications as commercial,industrial, and automotives areas.

We are looking forward to setting up business relationship with you and hope to provide you with the best service and solution. Let us make a better world for our industry!



## Contact us

Tel: +86-755-8981 8866 Fax: +86-755-8427 6832

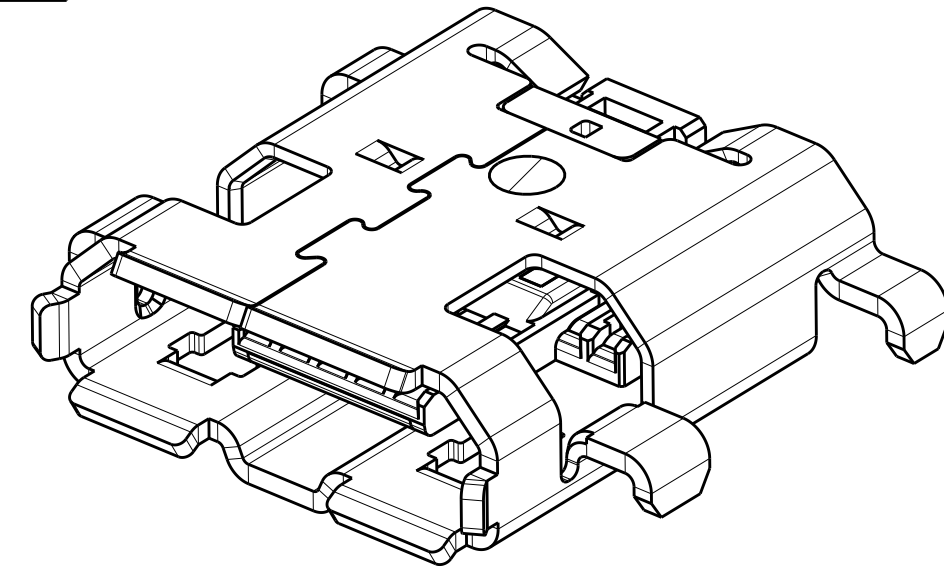
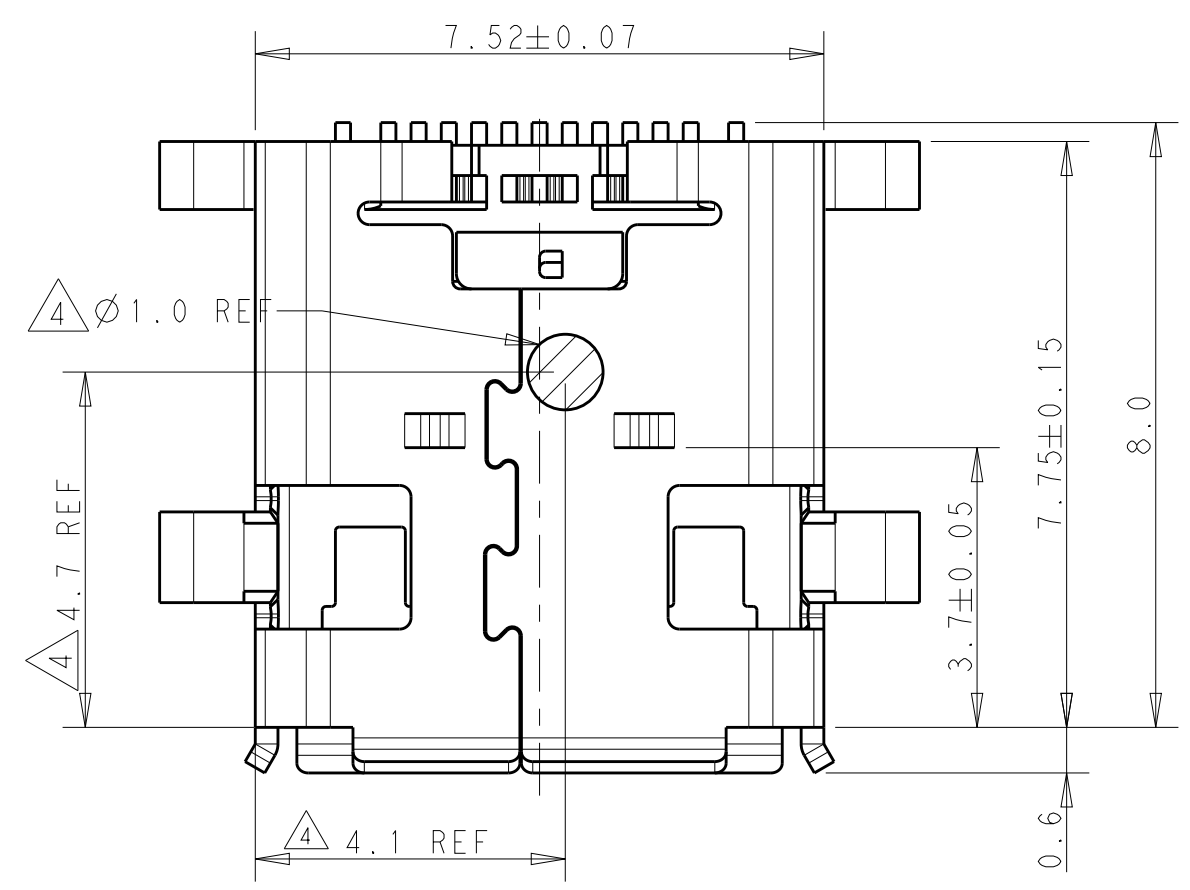
Email & Skype: info@chipsmall.com Web: www.chipsmall.com

Address: A1208, Overseas Decoration Building, #122 Zhenhua RD., Futian, Shenzhen, China



THIS DRAWING IS UNPUBLISHED. RELEASED FOR PUBLICATION 20  
 BY - ALL RIGHTS RESERVED.

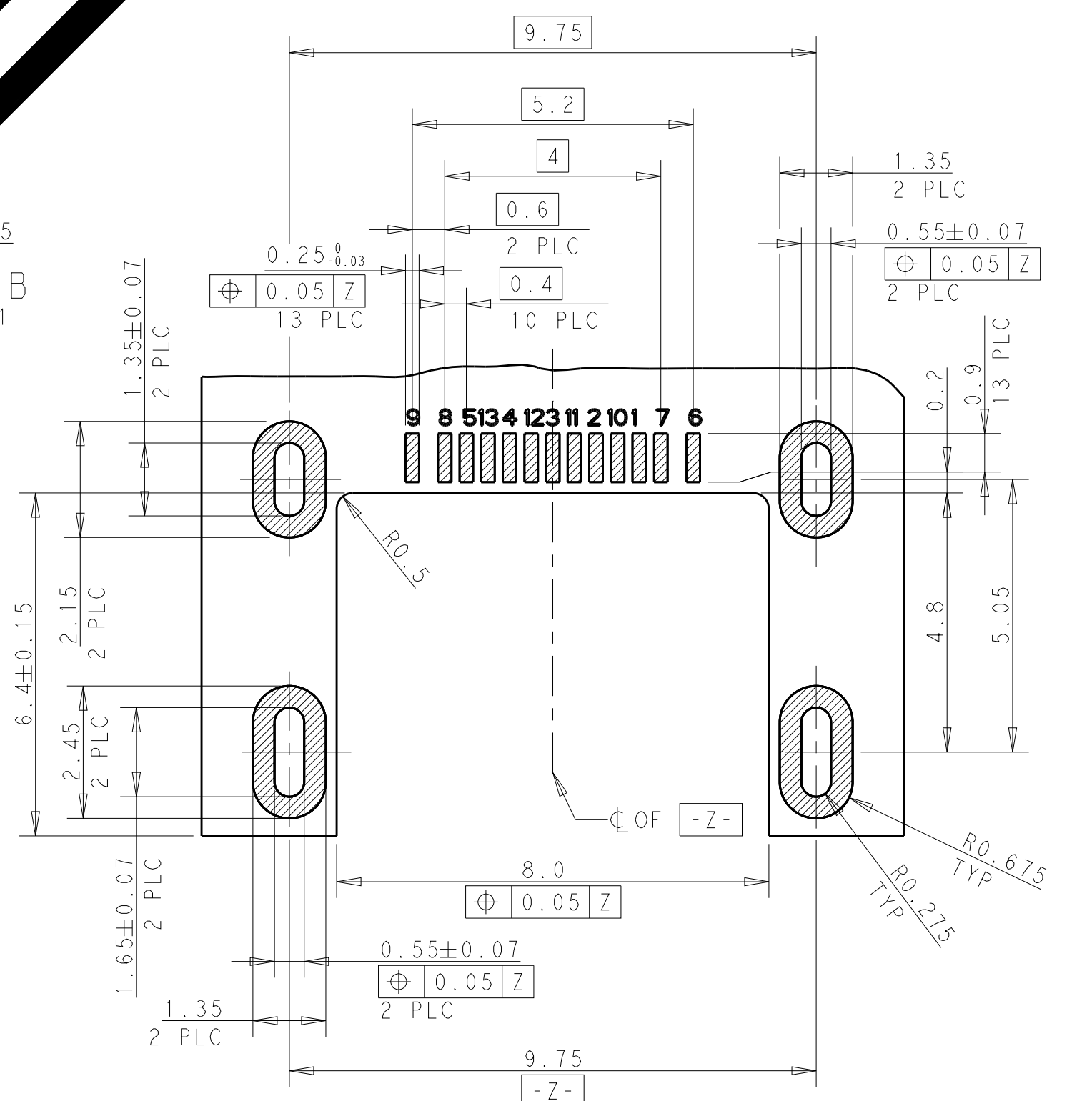
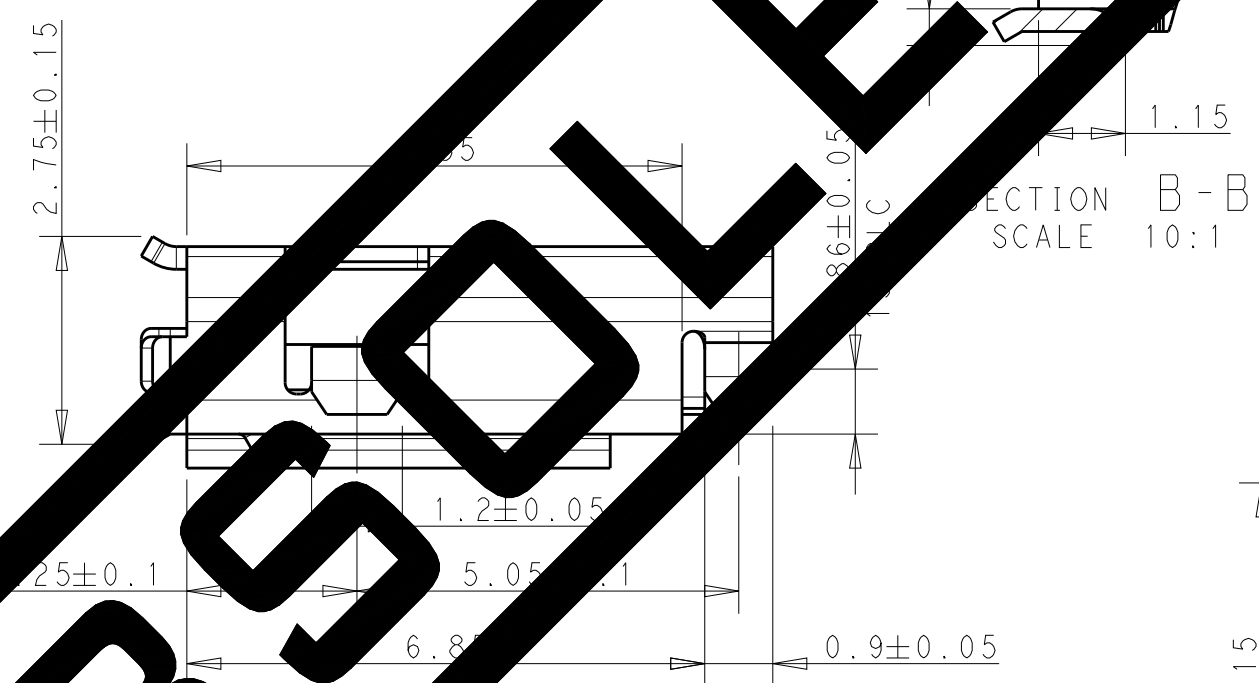
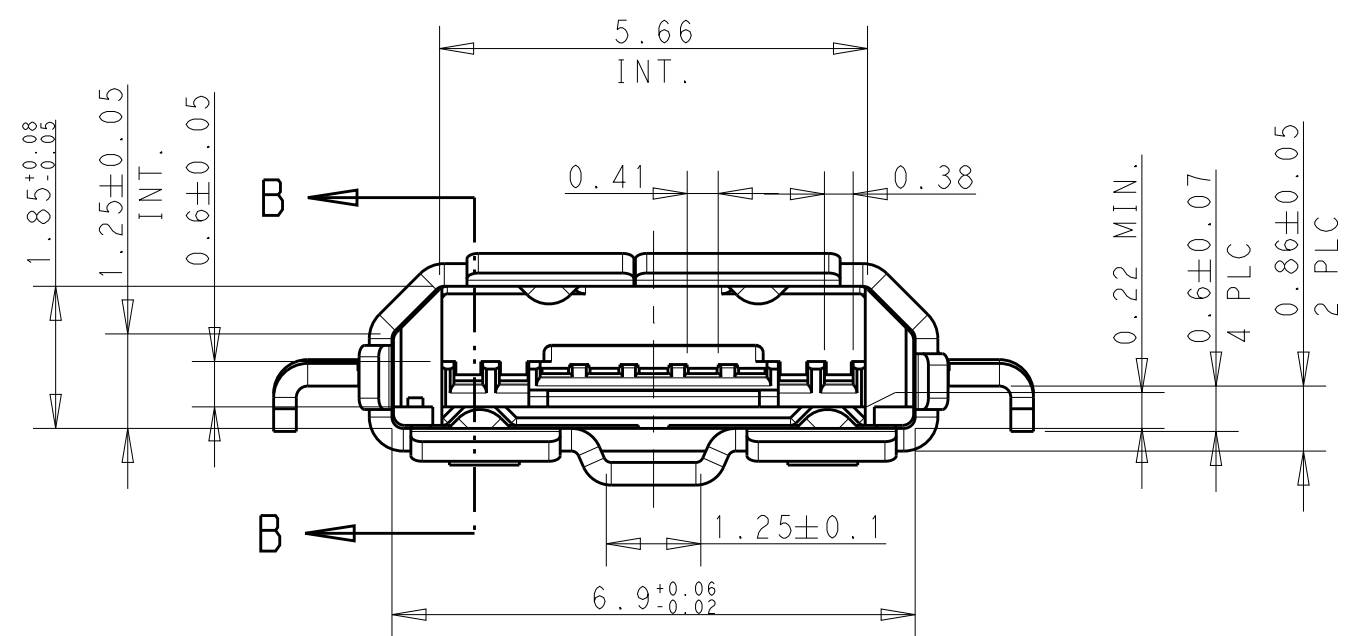
| LOC | DIST | REVISIONS                     |           |     |      |
|-----|------|-------------------------------|-----------|-----|------|
| P   | LTR  | DESCRIPTION                   | DATE      | DWN | APVD |
| ES  | 00   |                               |           |     |      |
|     | A    | OBSOLETE PN PER ECR-15-013671 | 17SEP2015 | B.L | J.L  |



2199238-1; AS SHOWN

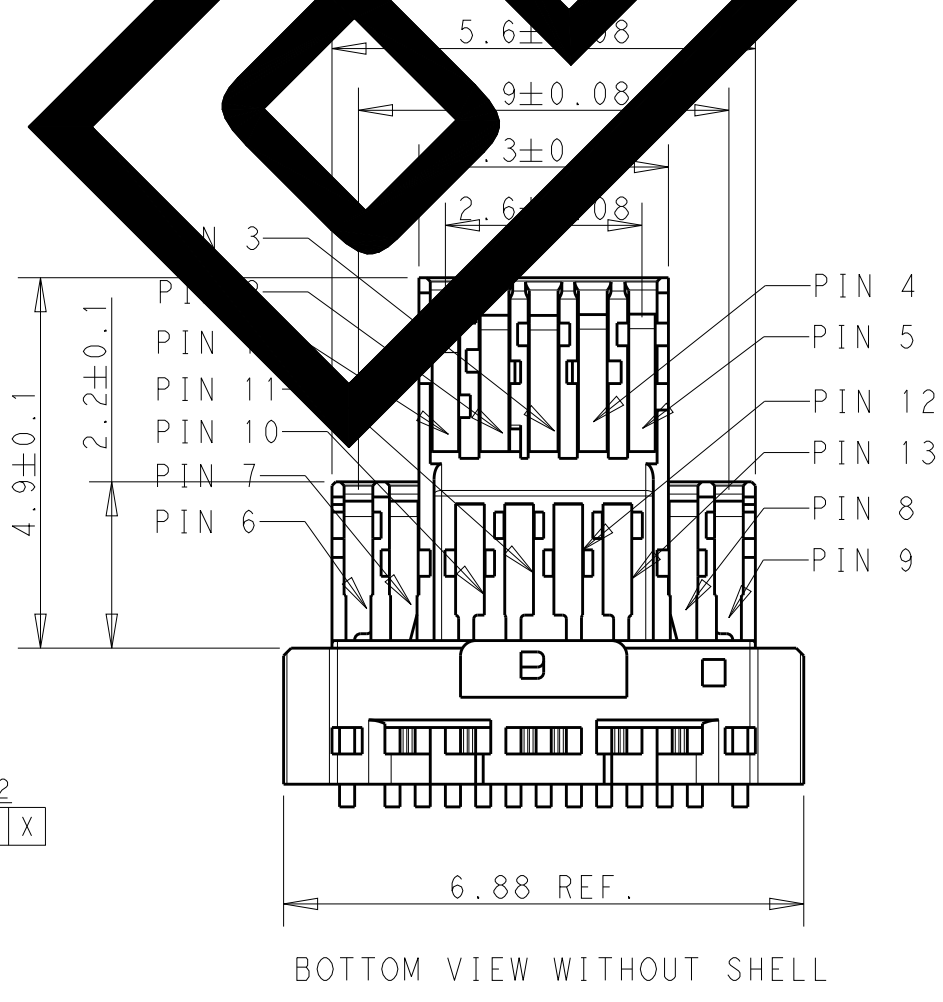
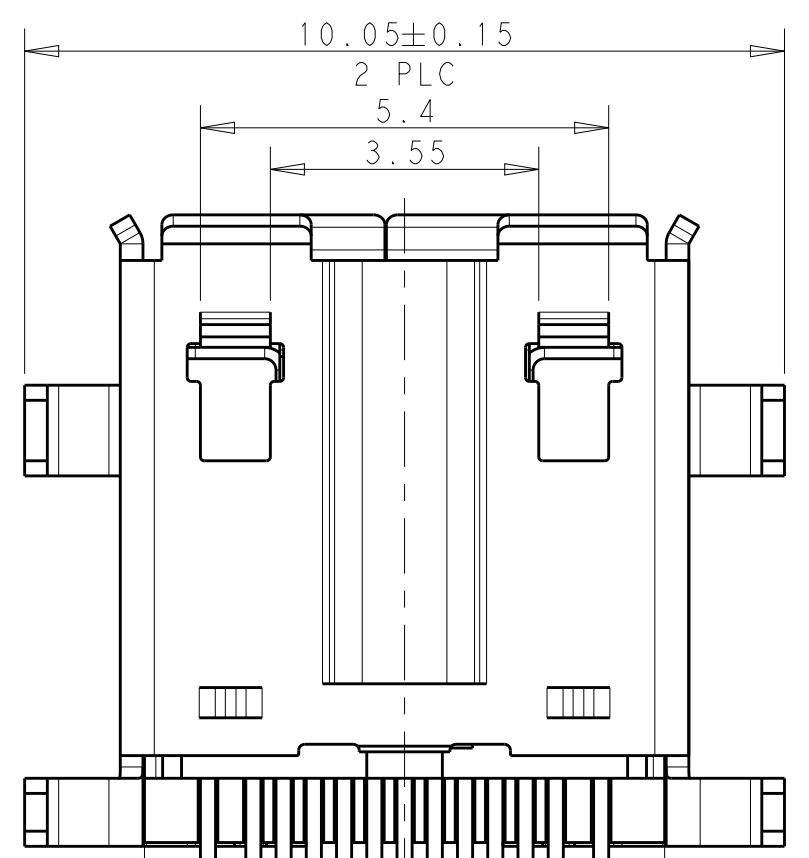
**MATERIAL:**  
 CONTACT: COPPER ALLOY, THICKNESS 0.15±0.05.  
 HOUSING: UL 94V-0, THERMOPLASTIC, COLOR: BLACK  
 SHELL: STAINLESS STEEL, 0.30±0.05.

**FINISH:**  
 CONTACT: GOLD PLATING ON CONTACT SURFACE AND GOLD FLASH SOLDER TINE SURFACE ALL OVER NICKEL UNDER PLATING.  
 SOLDER TINE SURFACE ALL OVER NICKEL UNDER PLATING.  
 SELL: 0.75um ALL OVER TIN PLATING  
 0.025um ALL OVER NICKEL UNDER PLATING  
 COMPLANARITY: 0.08 MAX.  
 PICK UP AND PLACE AREA  
 RECOMMEND COPPER FOIL THICKNESS: 1 OZ (0.035MM).  
 TRACE WIDTH: PIN 1 AND 5: 1MM.



**PIN DEFINITION**

| PIN NO. | SIGNAL NAME | USE CASE |
|---------|-------------|----------|
| PIN 13  | CONTROL-4   |          |
| PIN 12  | CONTROL-3   |          |
| PIN 11  | CONTROL-2   |          |
| PIN 10  | CONTROL-1   |          |
| PIN 9   | S+dA_SSTX+  |          |
| PIN 8   | S+dA_SSTX-  |          |
| PIN 7   | S+dA_SSRX+  |          |
| PIN 6   | S+dA_SSRX-  |          |
| PIN 5   | GND-uUSB    |          |
| PIN 4   | ID          |          |
| PIN 3   | D+          |          |
| PIN 2   | D-          |          |
| PIN 1   | VBUS        |          |



BOTTOM VIEW WITHOUT SHELL

THIS DRAWING IS A CONTROLLED DOCUMENT.

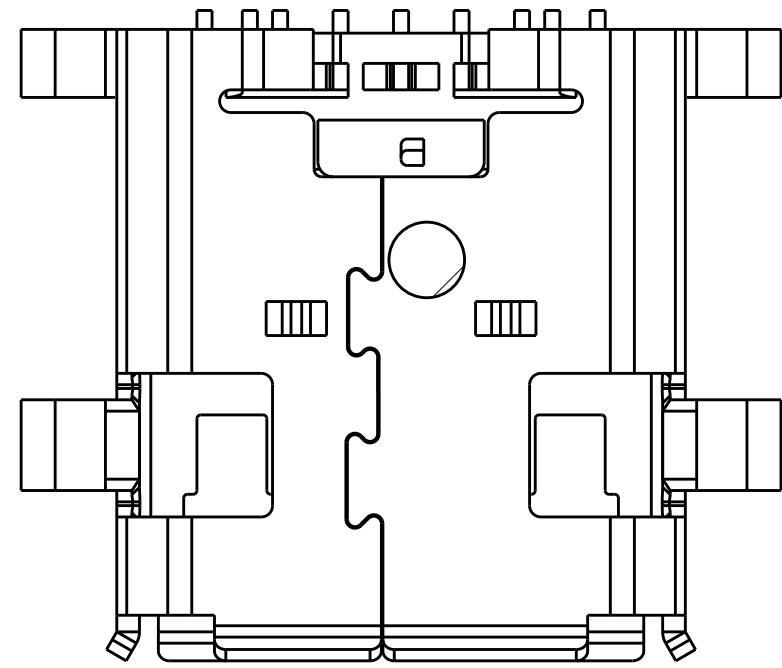
|             |  |                           |  |
|-------------|--|---------------------------|--|
| DIMENSIONS: | TOLERANCES UNLESS OTHERWISE SPECIFIED: | DWN Tony Zhang 28JAN2013  | TE Connectivity                              |
| mm          | 0 PLC ±0.15                            | CHK Xu Xiang 28JAN2013    |  |
|             | 1 PLC ±0.1                             | APVD Steven Yao 28JAN2013 |  |
|             | 2 PLC ±0.05                            | NAME MULTI I/O 5+4+4      |  |
|             | 3 PLC ±0.05                            | PRODUCT SPEC 108-115055   | REVERSE 0.86MM OFFSET RECEPTACLE FLANGE TYPE |
|             | 4 PLC ±                                | APPLICATION SPEC -        | SIZE A200779                                 |
|             | ANGLES ±3°                             | WEIGHT -                  | CAGE CODE C-2199238                          |
| MATERIAL    | FINISH                                 | Customer Drawing          | DRAWING NO C-2199238                         |

RESTRICTED TO -

SCALE 10:1 SHEET 1 OF 3 REV A

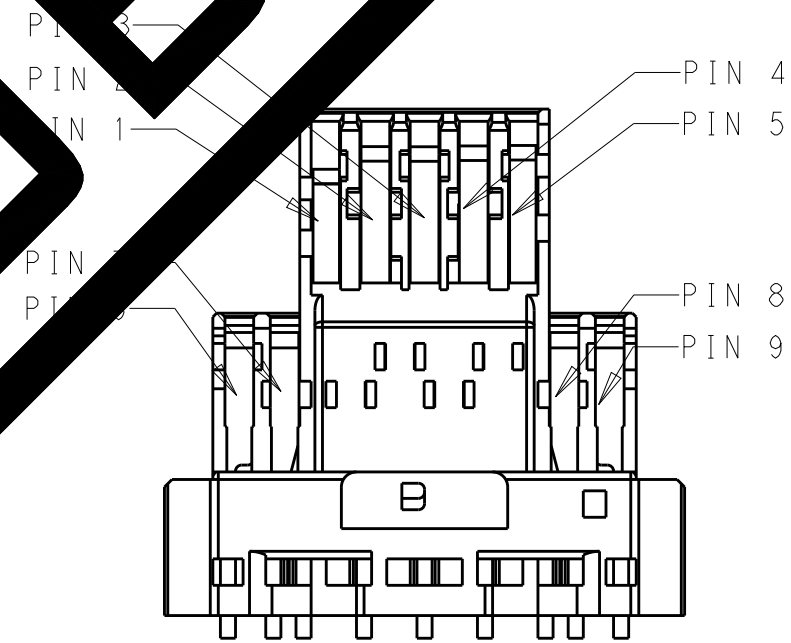
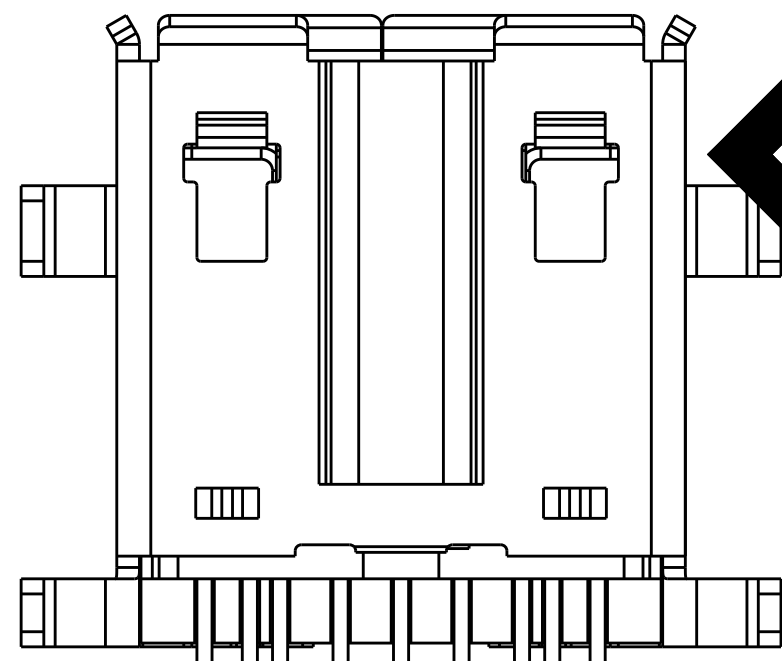
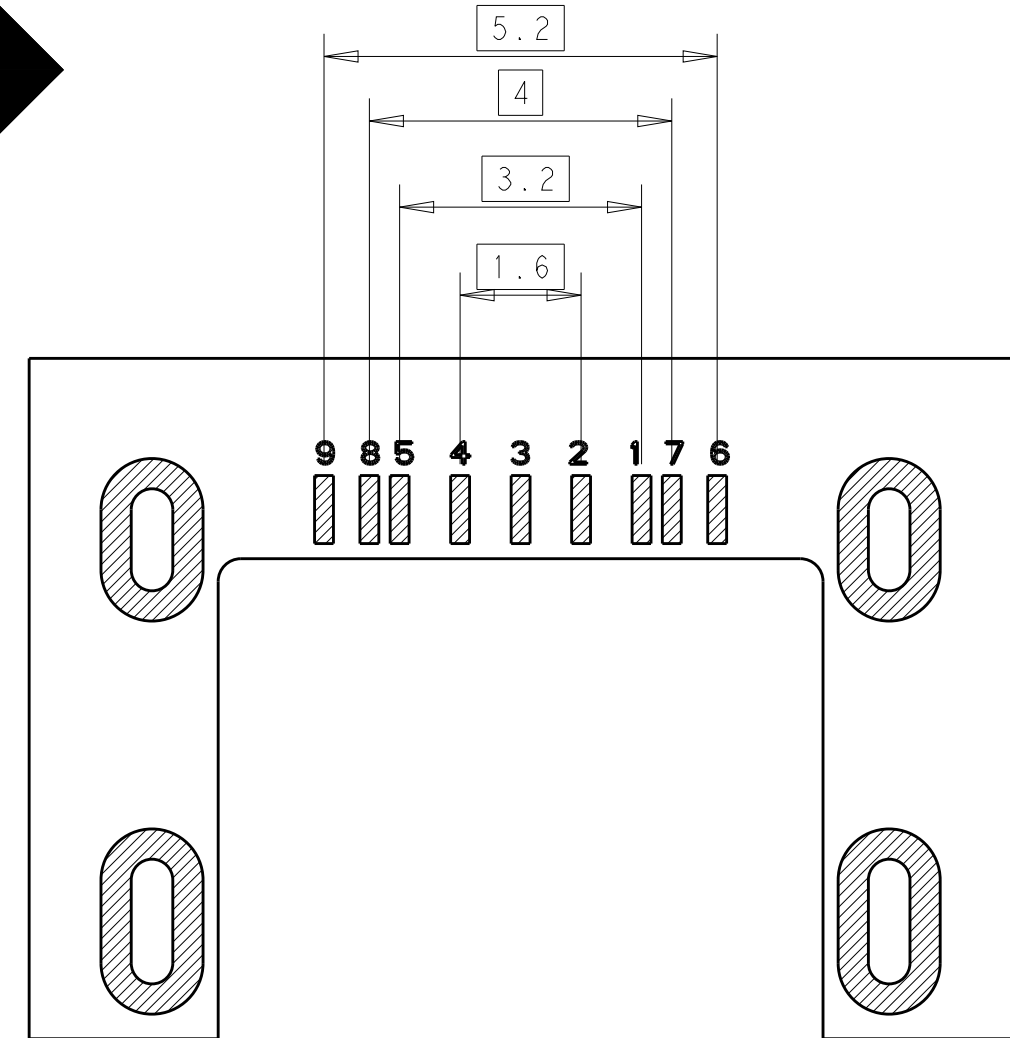
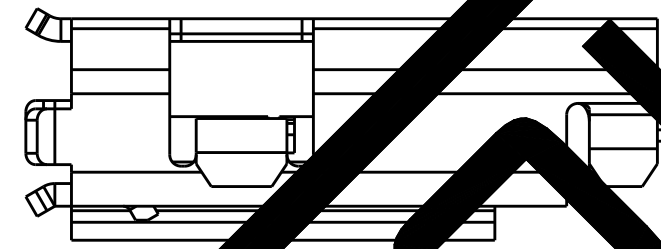
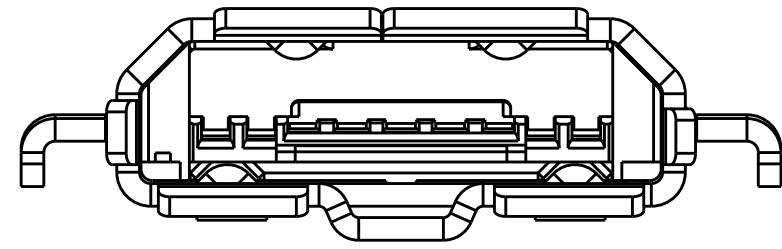
THIS DRAWING IS UNPUBLISHED. RELEASED FOR PUBLICATION 20  
 © COPYRIGHT 20 BY - ALL RIGHTS RESERVED.

| LOC | DIST | REVISIONS |     |             |      |     |      |
|-----|------|-----------|-----|-------------|------|-----|------|
| ES  | 00   | P         | LTR | DESCRIPTION | DATE | DWN | APVD |
|     |      | -         |     | SEE SHEET 1 |      |     |      |



1-2199238-1; AS SHOWN

NOTE:  
OTHER ITEMS AND DIMENSIONS, PLEASE REFER TO SHEET 1.



BOTTOM VIEW WITHOUT SHELL

RECOMMENDED PWB LAYOUT  
VIEWED FROM CONNECTOR MOUNT SIDE  
GENERAL TOLERANCE: ±0.05

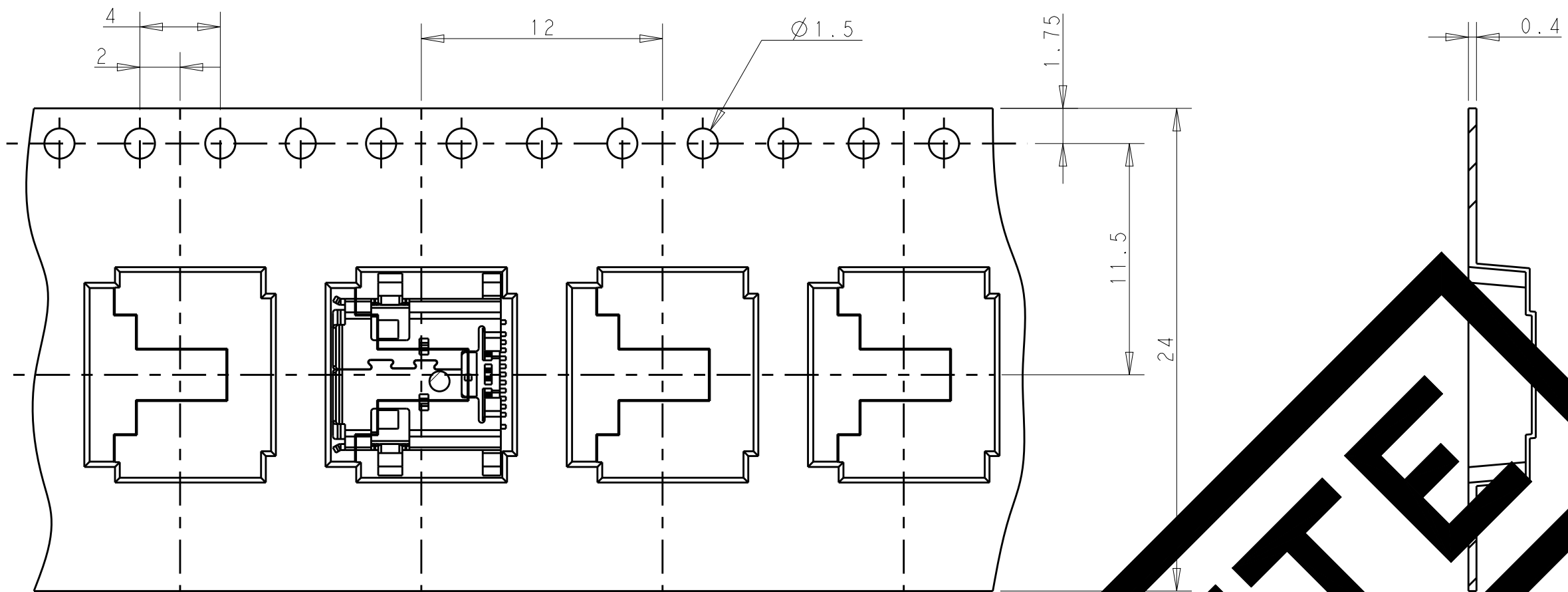
OBSOLETE

|  |  |                              |  |  |
|--|--|------------------------------|--|--|
| THIS DRAWING IS A CONTROLLED DOCUMENT. |  | DWN 28JAN2013<br>Tony Zhang  | <b>STE</b> TE Connectivity   |  |
| DIMENSIONS: mm                         |  | CHK 28JAN2013<br>Xu Xiang    |  |  |
| TOLERANCES UNLESS OTHERWISE SPECIFIED: |  | APVD 28JAN2013<br>Steven Yao | NAME<br>MULTI I/O 5+4+4<br>REVERSE 0.86MM OFFSET RECEPTACLE<br>FLANGE TYPE |  |
| 0 PLC ±                                |  | PRODUCT SPEC<br>108-115055   | SIZE CAGE CODE DRAWING NO  |  |
| 1 PLC ±0.15                            |  | APPLICATION SPEC             | RESTRICTED TO  |  |
| 2 PLC ±0.1                             |  | WEIGHT                       | A200779 C-2199238  |  |
| 3 PLC ±0.05                            |  | Customer Drawing             | SCALE 10:1 SHEET 2 OF 3 REV A  |  |
| 4 PLC ±                                |  |                              |  |  |
| ANGLES ±3°                             |  |                              |  |  |
| FINISH                                 |  |                              |  |  |

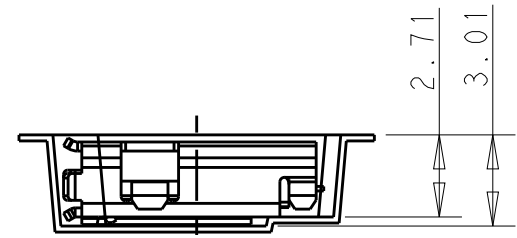


THIS DRAWING IS UNPUBLISHED. RELEASED FOR PUBLICATION 20  
 © COPYRIGHT 20 BY - ALL RIGHTS RESERVED.

| LOC | DIST | REVISIONS   |      |     |      |
|-----|------|-------------|------|-----|------|
| P   | LTR  | DESCRIPTION | DATE | DWN | APVD |
| ES  | 00   | SEE SHEET 1 | -    | -   | -    |

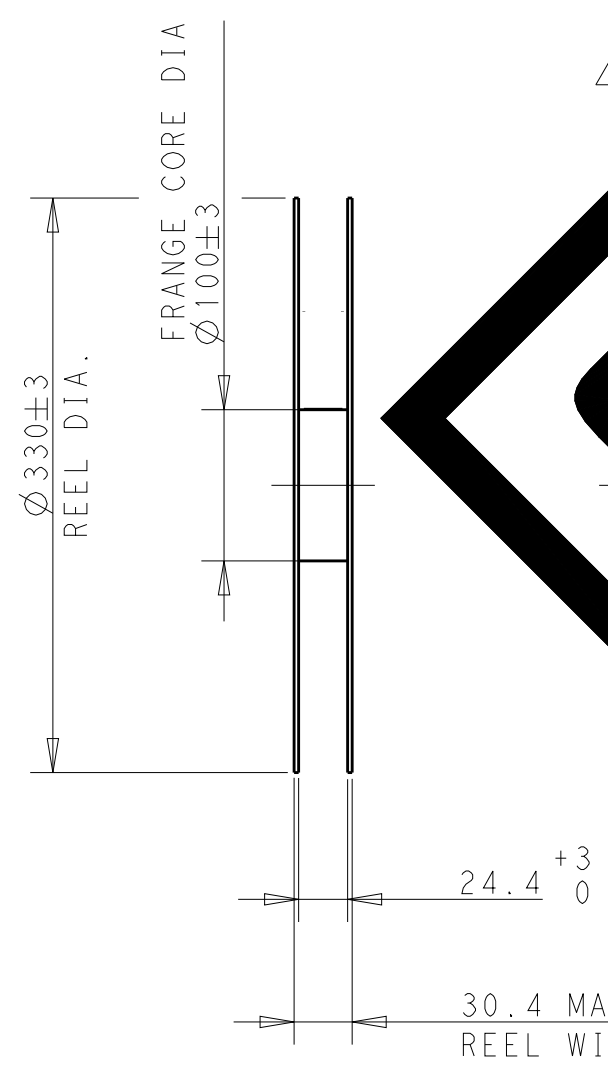


USER UNREELING DIRECTION →



**OBSOLETE**

PEELING ANGLE: 165°~180°  
 PEELING STRENGTH: 0.1~0.7N(300mm/min)



WITH PRODUCT CHARGE 1000 PCS/1 REEL  
 WITHOUT CHARGE 300mm REF.

| NO. | DESCRIPTION |
|-----|-------------|
| 1   | COVER TAPE  |
| 2   | EMBOSS TAPE |
| 3   | REEL        |

UNREELING DIRECTION →

THIS DRAWING IS A CONTROLLED DOCUMENT.

|  |   |
|--|---|
| DWN Tony Zhang 28JAN2013               | TE Connectivity   |
| CHK Xu Xiang 28JAN2013                 |   |
| APVD Steven Yao 28JAN2013              |   |
| PRODUCT SPEC 108-115055                |   |
| MATERIAL                               | NAME MULTI I/O 5+4+4 REVERSE 0.86MM OFFSET RECEPTACLE FLANGE TYPE |
| TOLERANCES UNLESS OTHERWISE SPECIFIED: | SIZE CAGE CODE DRAWING NO RESTRICTED TO                           |
| 0 PLC ±                                | A200779 C-2199238   |
| 1 PLC ±0.15                            | SCALE 10:1 SHEET 3 OF 3 REV A                                     |
| 2 PLC ±0.1                             |   |
| 3 PLC ±0.05                            |   |
| 4 PLC ±                                |   |
| ANGLES ±3°                             |   |
| FINISH                                 |   |

Customer Drawing