



Chipsmall Limited consists of a professional team with an average of over 10 year of expertise in the distribution of electronic components. Based in Hongkong, we have already established firm and mutual-benefit business relationships with customers from,Europe,America and south Asia,supplying obsolete and hard-to-find components to meet their specific needs.

With the principle of “Quality Parts,Customers Priority,Honest Operation,and Considerate Service”,our business mainly focus on the distribution of electronic components. Line cards we deal with include Microchip,ALPS,ROHM,Xilinx,Pulse,ON,Everlight and Freescale. Main products comprise IC,Modules,Potentiometer,IC Socket,Relay,Connector.Our parts cover such applications as commercial,industrial, and automotives areas.

We are looking forward to setting up business relationship with you and hope to provide you with the best service and solution. Let us make a better world for our industry!



Contact us

Tel: +86-755-8981 8866 Fax: +86-755-8427 6832

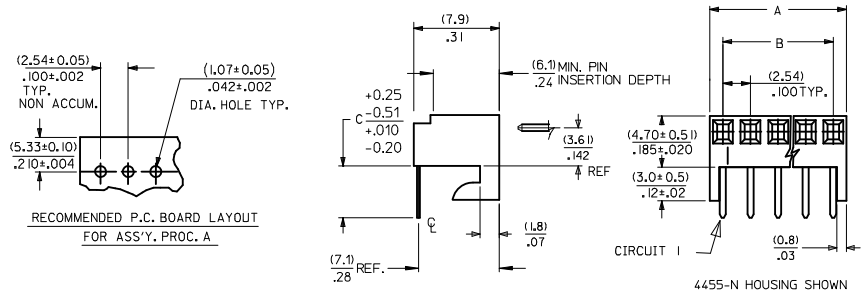
Email & Skype: info@chipsmall.com Web: www.chipsmall.com

Address: A1208, Overseas Decoration Building, #122 Zhenhua RD., Futian, Shenzhen, China

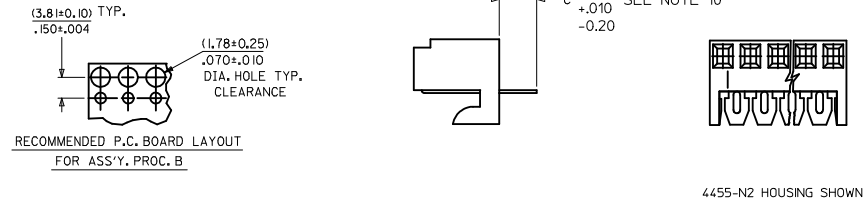


NO. OF CKTS.	DIM. A	DIM. B
1	(2.44±.15) .096±.006	—
2	(4.98±.15) .196±.006	(2.54±.10) .100±.004
3	(7.52±.15) .296±.006	(5.08±.10) .200±.004
4	(10.06±.15) .396±.006	(7.62±.10) .300±.004
5	(12.60±.18) .496±.007	(10.16±.13) .400±.005
6	(15.14±.18) .596±.007	(12.70±.13) .500±.005
7	(17.68±.20) .696±.008	(15.24±.15) .600±.006
8	(20.22±.20) .796±.008	(17.78±.15) .700±.006
9	(22.76±.20) .896±.008	(20.32±.15) .800±.006
10	(25.30±.25) .996±.010	(22.86±.20) .900±.008
11	(27.84±.25) 1.096±.010	(25.40±.20) 1.000±.008
12	(30.38±.25) 1.196±.010	(27.94±.20) 1.100±.008
13	(32.92±.25) 1.296±.010	(30.48±.20) 1.200±.008
14	(35.46±.25) 1.396±.010	(33.02±.20) 1.300±.008
15	(38.00±.28) 1.496±.011	(35.56±.23) 1.400±.009
16	(40.54±.28) 1.596±.011	(38.10±.23) 1.500±.009
17	(43.08±.28) 1.696±.011	(40.64±.23) 1.600±.009
18	(45.62±.28) 1.796±.011	(43.18±.23) 1.700±.009
19	(48.16±.28) 1.896±.011	(45.72±.23) 1.800±.009
20	(50.70±.30) 1.996±.012	(48.26±.25) 1.900±.010

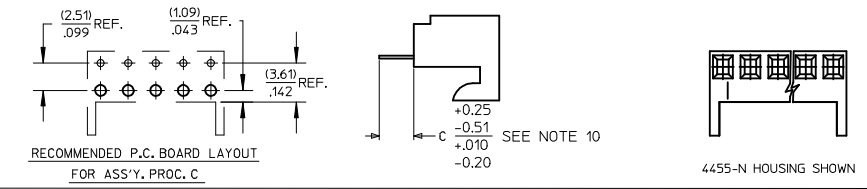
**ASS'Y. PROC. A
RIGHT ANGLE**



**ASS'Y. PROC. B
BOTTOM ENTRY**

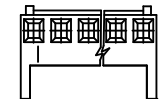


**ASS'Y. PROC. C
TOP ENTRY**



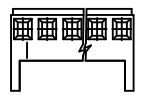
- NOTES:
1. MATERIAL: NYLON, UL 94V-0, COLOR: WHITE
 2. FINISH:
 - (208) - SELECT GOLD: (0.00038)/.000015 MIN., SELECT TIN: (0.00254)/.000100 MIN. OVERALL NICKEL UNDERPLATE: (0.00127)/.000050 MIN.
 - (228) - SELECT GOLD: (0.00076)/.000030 MIN., SELECT TIN: (0.00254)/.000100 MIN. OVERALL NICKEL UNDERPLATE: (0.00127)/.000050 MIN.
 - (231) - SELECT GOLD: (0.00127)/.000050 MIN., SELECT TIN: (0.00254)/.000100 MIN. OVERALL NICKEL UNDERPLATE: (0.00127)/.000050 MIN.
 - (565) - SELECT GOLD: (0.00051)/.000020 MIN., OVERALL NICKEL: (0.00076)/.000030 MIN. OVERALL GOLD FLASH: (0.00005)/.000002 MIN.
 - (P909) - OVERALL TIN: (0.00254)/.000100 MIN.
 3. PARTS CONFORM TO PRODUCT SPECIFICATION PS-10-07.
 4. PACKAGING: SEE CHARTS.
 5. PARTS MUST CONFORM TO SOLDERABILITY SPEC 152.
 6. PARTS ARE STACKABLE END TO END ON (2.54)/.100 CENTERS.
 7. TYPICAL PCB THICKNESS: (1.57)/.062
 8. PART CONFORMS TO CLASS B REQUIREMENTS OF COSMETIC SPECIFICATION PS-45499-002 EXCEPT PROTRUSIONS. PARTS MAY HAVE MORE THAN 2 GATE MARKS.
 9. WHEN MATING ASSEMBLIES THAT USE 4455-BN HOUSINGS TO BREAKAWAY FRICTION LOCK OR POLARIZING HEADERS, THE END BACKWALLS MUST BE REMOVED.
 10. DIMENSION C MEASURED WITH TERMINAL PUSHED IN AGAINST THE STOP.

HOUSING NO. 4455-BN
SEE NOTE 9



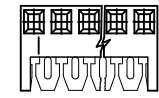
WITH RAMP AND POLARIZING

HOUSING NO. 4455-NR



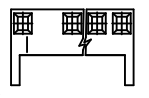
WITH RAMP

HOUSING NO. 4455-N2



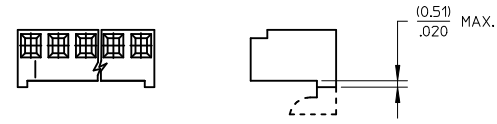
AVAILABLE ON BOTTOM ENTRY APPLICATIONS ONLY

HOUSING NO. 4455-N-02

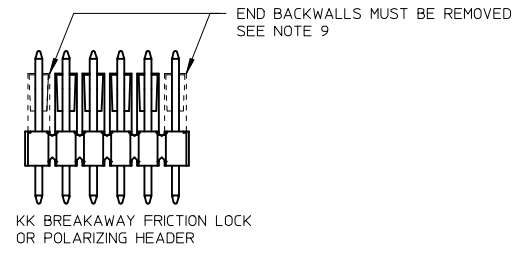


MOLDED VOID IN CKT 2

HOUSING NO. 4455-N



HOOKS CUT OPTION AVAILABLE ON TOP ENTRY. SEE CHART



KK BREAKAWAY FRICTION LOCK OR POLARIZING HEADER

2-*	D14
1	D15
SHT. REV.	

REMOVE OBSOLETE ECC NO: UCP2017-4505 DRWN: BAPPELDORN 2017/01/10 CHKD: HKIPPER 2017/01/10 APPR: F SMITH 2017/03/14 DESCRIPTION REV	QUALITY SYMBOLS	GENERAL TOLERANCES (UNLESS SPECIFIED)	DIMENSION STYLE	SCALE	DESIGN UNITS	THIRD ANGLE PROJECTION
	▽=0	4 PLACES ± --- ± ---	MM/IN	---	INCH	KK 100 PCB ASSY 4455 SERIES DWG molex DOCUMENT NO. SDA-4455 SHEET NO. 1 OF *
	▽=0	3 PLACES ± --- ± .010	mm	---	INCH	
	▽=0	2 PLACES ± 0.25 ± .015	INCH	---	INCH	
▽=0	1 PLACE ± 0.36 ± ---	mm	---	INCH		
D15	ANGULAR ± 1/2°	DRAFT WHERE APPLICABLE MUST REMAIN WITHIN DIMENSIONS	MATERIAL NO.	SEE CHART	DATE	
			SIZE B			