



Chipsmall Limited consists of a professional team with an average of over 10 year of expertise in the distribution of electronic components. Based in Hongkong, we have already established firm and mutual-benefit business relationships with customers from,Europe,America and south Asia,supplying obsolete and hard-to-find components to meet their specific needs.

With the principle of "Quality Parts,Customers Priority,Honest Operation,and Considerate Service",our business mainly focus on the distribution of electronic components. Line cards we deal with include Microchip,ALPS,ROHM,Xilinx,Pulse,ON,Everlight and Freescale. Main products comprise IC,Modules,Potentiometer,IC Socket,Relay,Connector.Our parts cover such applications as commercial,industrial, and automotives areas.

We are looking forward to setting up business relationship with you and hope to provide you with the best service and solution. Let us make a better world for our industry!



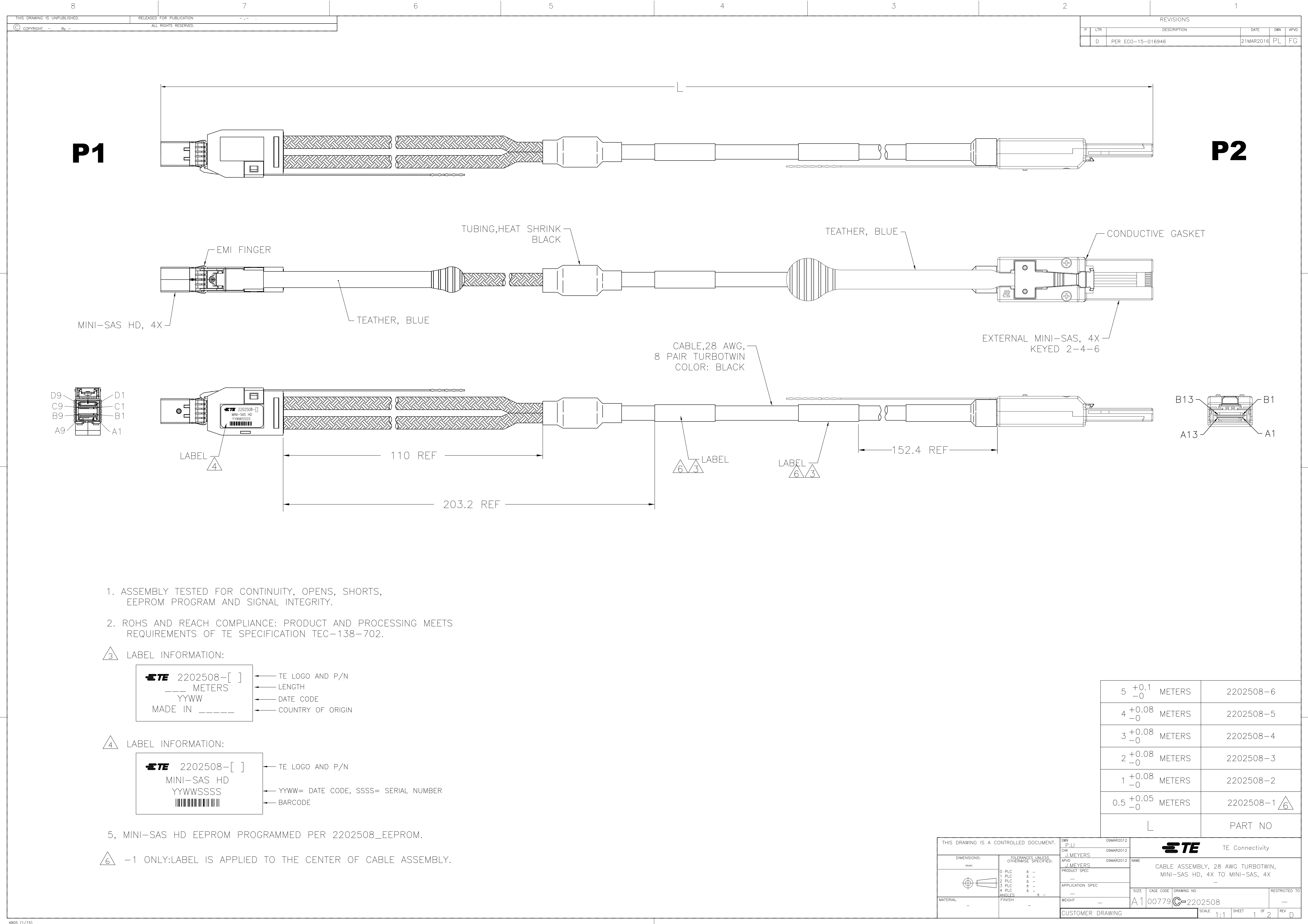
Contact us

Tel: +86-755-8981 8866 Fax: +86-755-8427 6832

Email & Skype: info@chipsmall.com Web: www.chipsmall.com

Address: A1208, Overseas Decoration Building, #122 Zhenhua RD., Futian, Shenzhen, China





1. ASSEMBLY TESTED FOR CONTINUITY, OPENS, SHORTS, EEPROM PROGRAM AND SIGNAL INTEGRITY.
2. ROHS AND REACH COMPLIANCE: PRODUCT AND PROCESSING MEETS REQUIREMENTS OF TE SPECIFICATION TEC-138-702.

3 LABEL INFORMATION:

TE 2202508-[]	TE LOGO AND P/N
___ METERS	LENGTH
YYWW	DATE CODE
MADE IN _____	COUNTRY OF ORIGIN

4 LABEL INFORMATION:

TE 2202508-[]	TE LOGO AND P/N
MINI-SAS HD	
YYWWSSSS	YYWW= DATE CODE, SSSS= SERIAL NUMBER
12345678901234567890	BARCODE

- 5, MINI-SAS HD EEPROM PROGRAMMED PER 2202508_EEPROM.
- 6 -1 ONLY: LABEL IS APPLIED TO THE CENTER OF CABLE ASSEMBLY.

REVISIONS					
P	LTR	DESCRIPTION	DATE	DWN	APVD
D		PER ECO-15-016946	21MAR2016	PL	FG

5	+0.1 -0	METERS	2202508-6
4	+0.08 -0	METERS	2202508-5
3	+0.08 -0	METERS	2202508-4
2	+0.08 -0	METERS	2202508-3
1	+0.08 -0	METERS	2202508-2
0.5	+0.05 -0	METERS	2202508-1 6
L			PART NO

THIS DRAWING IS A CONTROLLED DOCUMENT.		DWN P. LI CHK J. MEYERS APVD J. MEYERS	09MAR2012 09MAR2012 09MAR2012	TE Connectivity	
DIMENSIONS: mm		TOLERANCES UNLESS OTHERWISE SPECIFIED:		NAME	
0 PLC ± -		1 PLC ± -		PRODUCT SPEC	
2 PLC ± -		3 PLC ± -		APPLICATION SPEC	
4 PLC ± -		ANGLES ± -		SIZE	
MATERIAL		FINISH		CAGE CODE	
-		-		DRAWING NO	
-		-		RESTRICTED TO	
-		-		A1 00779	
-		-		C=2202508	
-		-		CUSTOMER DRAWING	
-		-		SCALE 1:1	
-		-		SHEET 1 OF 2	
-		-		REV D	

