



Chipsmall Limited consists of a professional team with an average of over 10 year of expertise in the distribution of electronic components. Based in Hongkong, we have already established firm and mutual-benefit business relationships with customers from,Europe,America and south Asia,supplying obsolete and hard-to-find components to meet their specific needs.

With the principle of “Quality Parts,Customers Priority,Honest Operation,and Considerate Service”,our business mainly focus on the distribution of electronic components. Line cards we deal with include Microchip,ALPS,ROHM,Xilinx,Pulse,ON,Everlight and Freescale. Main products comprise IC,Modules,Potentiometer,IC Socket,Relay,Connector.Our parts cover such applications as commercial,industrial, and automotives areas.

We are looking forward to setting up business relationship with you and hope to provide you with the best service and solution. Let us make a better world for our industry!



Contact us

Tel: +86-755-8981 8866 Fax: +86-755-8427 6832

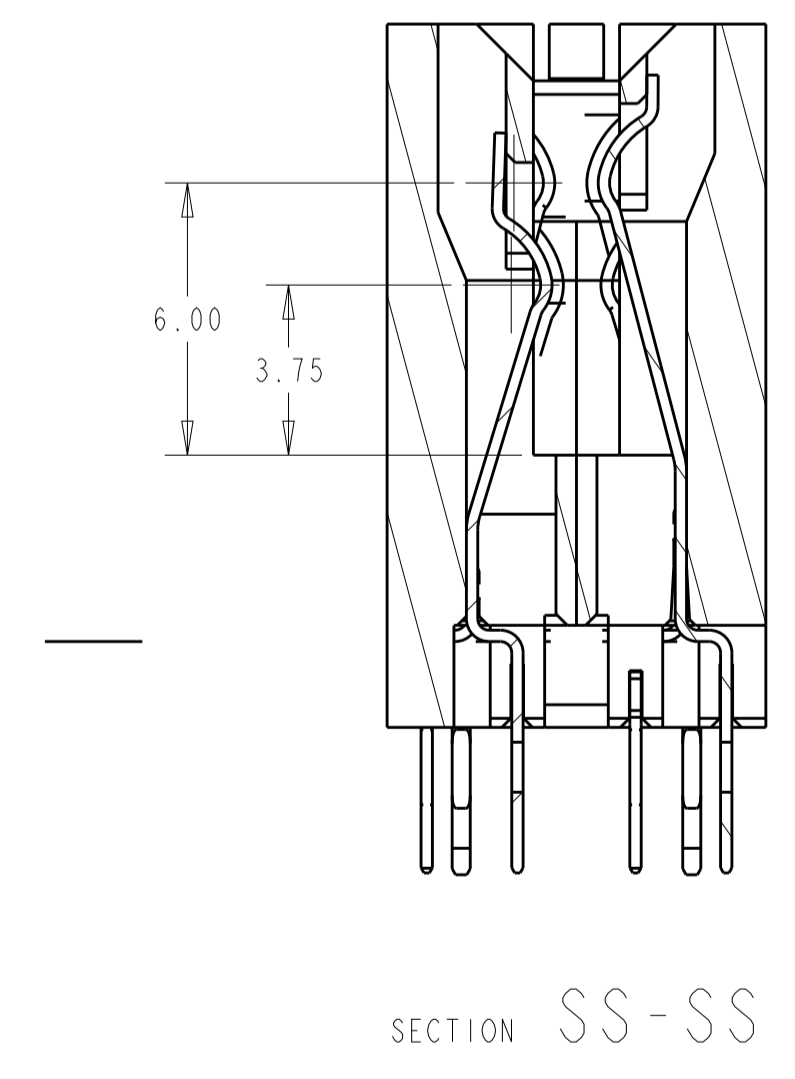
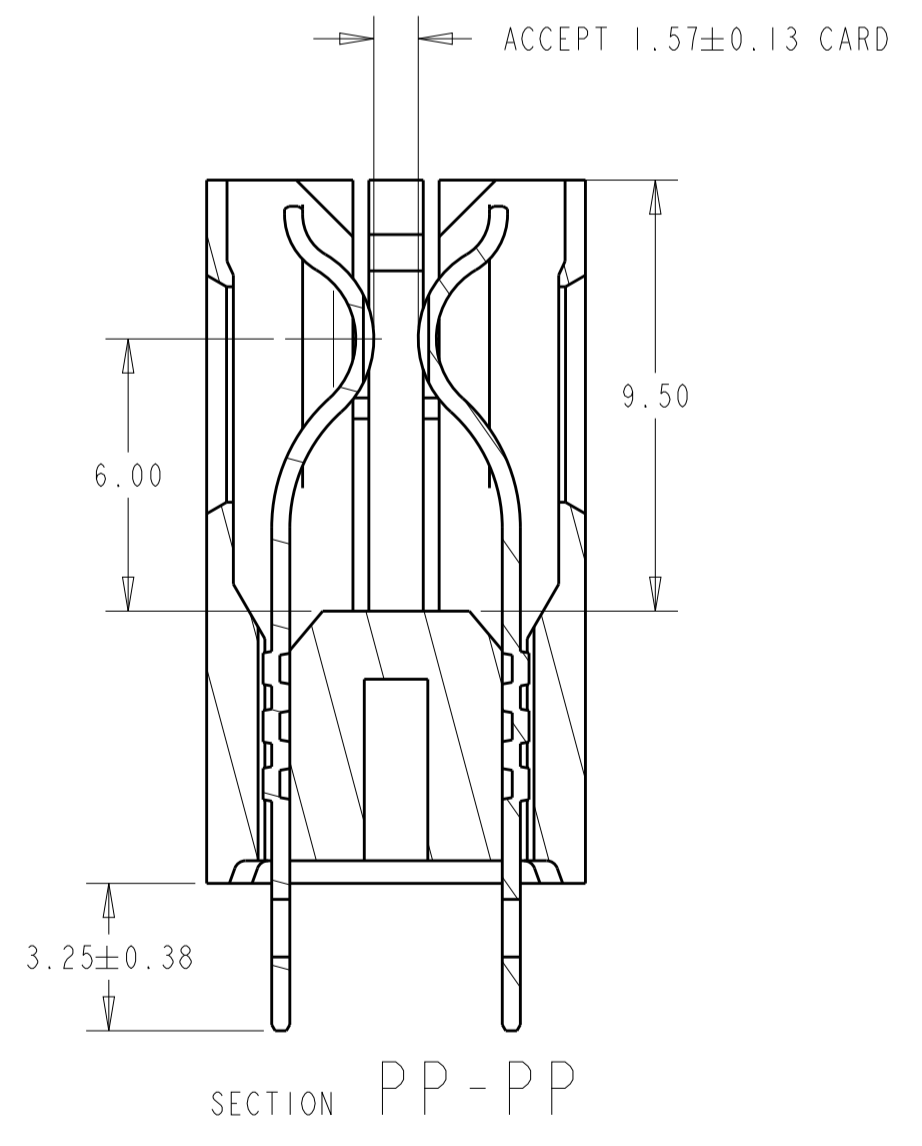
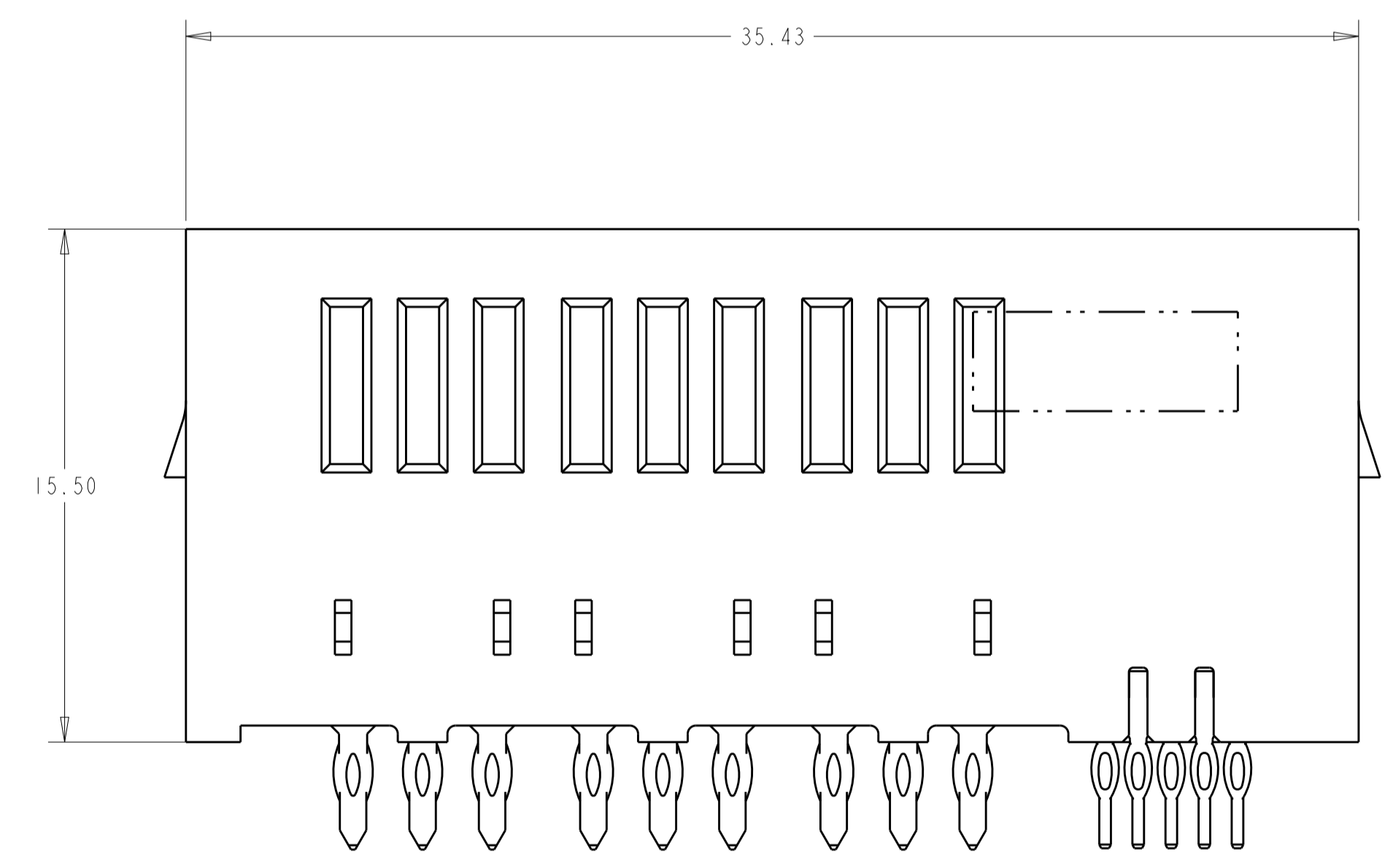
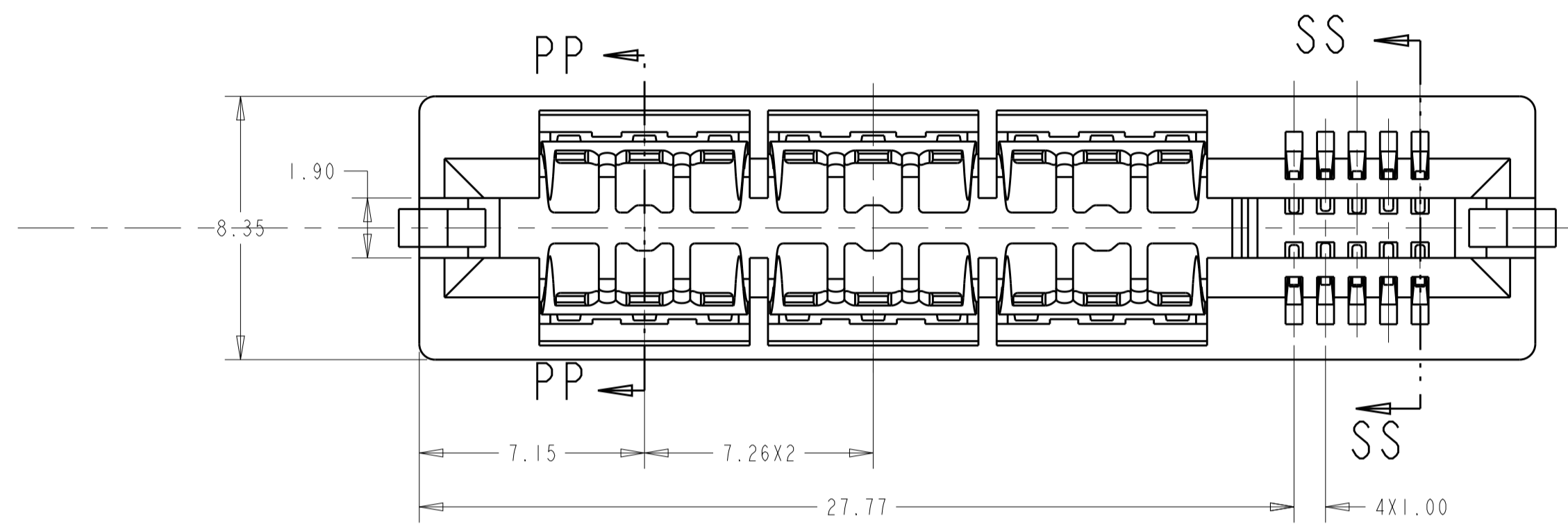
Email & Skype: info@chipsmall.com Web: www.chipsmall.com

Address: A1208, Overseas Decoration Building, #122 Zhenhua RD., Futian, Shenzhen, China



REVISIONS				
P.	LTN	DESCRIPTION	DATE	APVD
A		FIRST RELEASE	30AUG2016	SZ SZ

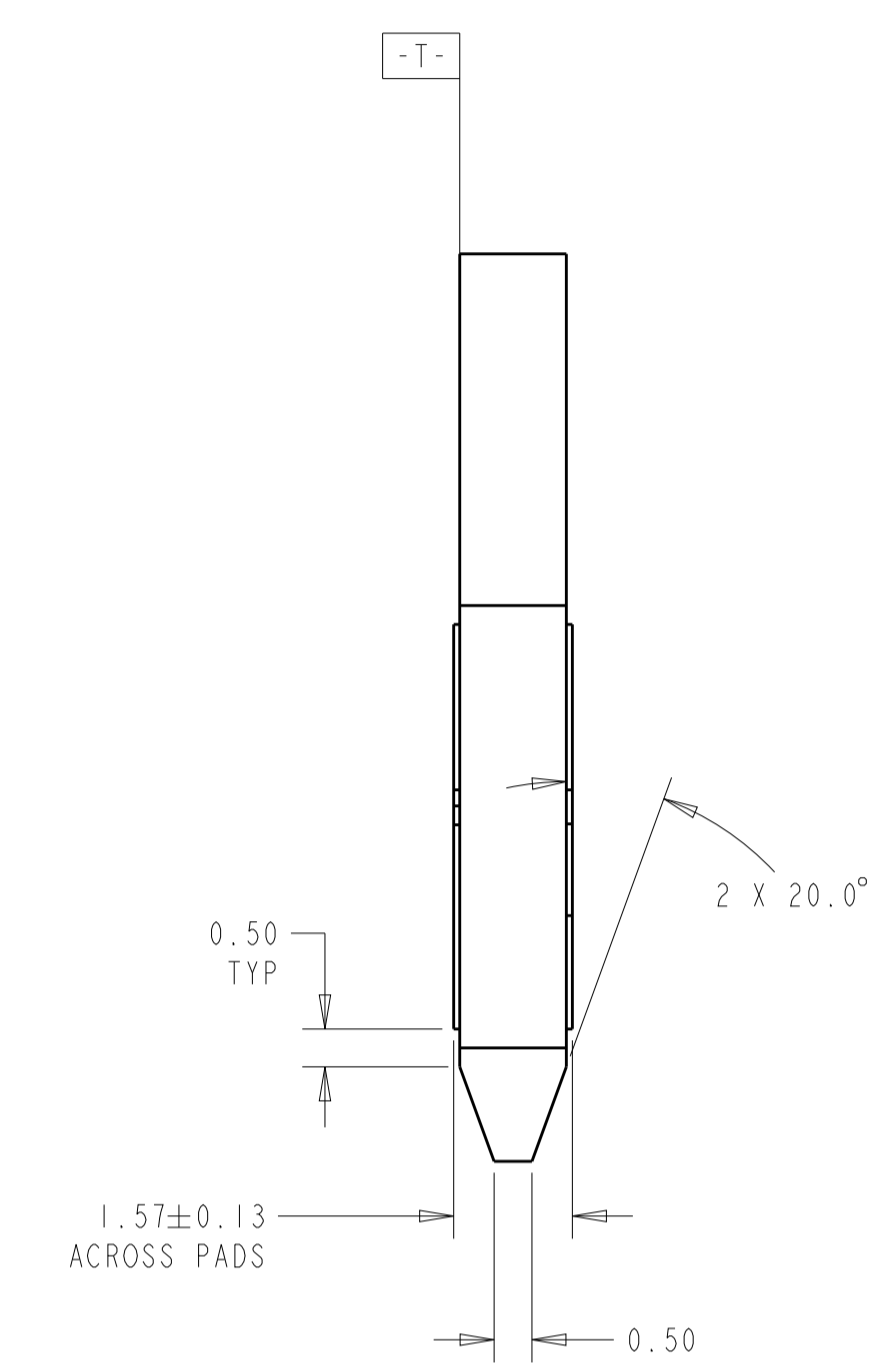
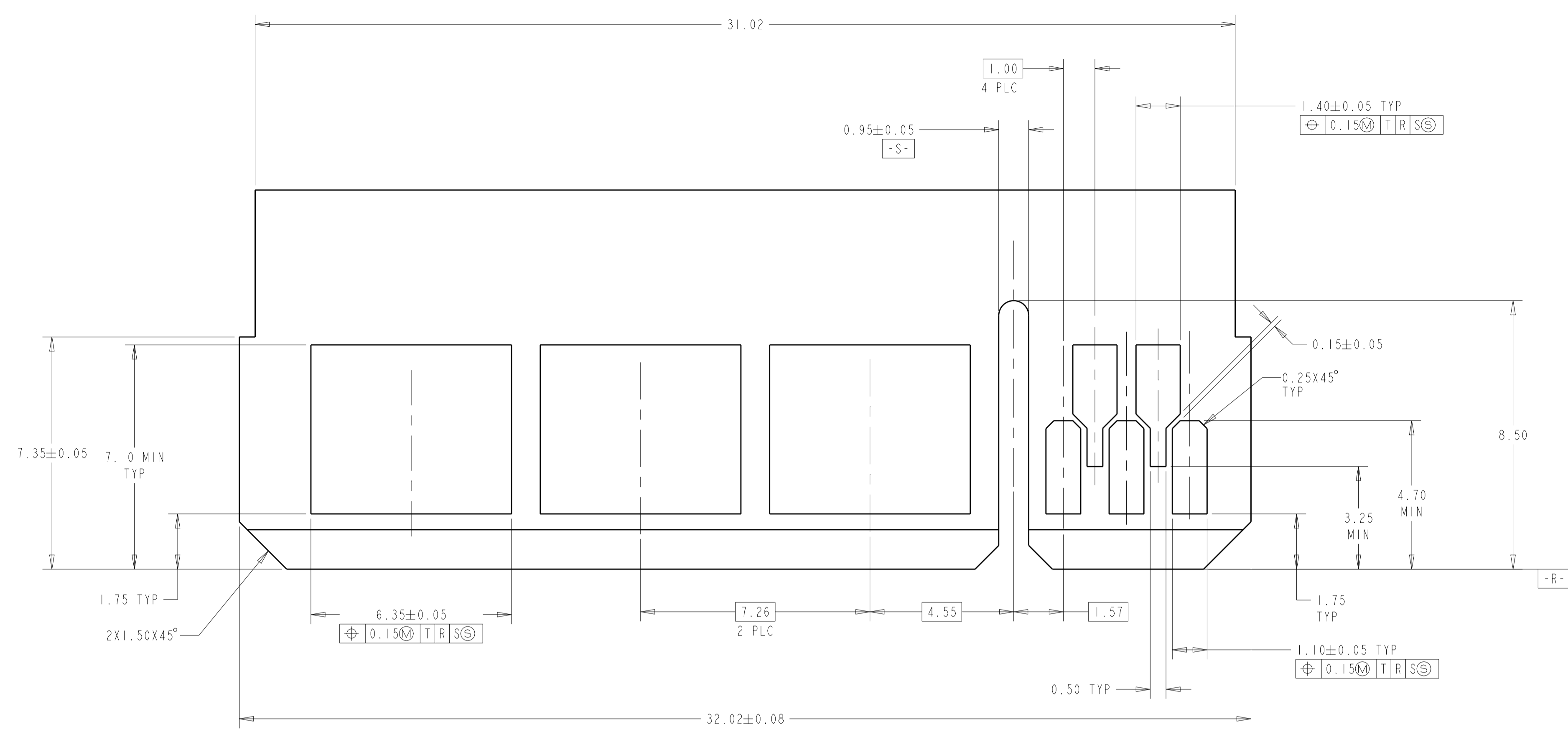
1. MATERIAL: HOUSING - THERMOPLASTIC, GLASS REINFORCED. COLOR: BLACK
CONTACT - COPPER ALLOY
2. FINISH: CONTACT - GOLD PLATED OVER NICKEL.
SOLDER TAILS - MATTE TIN OVER NICKEL
3. CONNECTOR ASSEMBLY MARKED WITH PART NUMBER AND DATE CODE IN THE APPROXIMATE AREA SHOWN
4. DATUMS AND BASIC DIMENSIONS TO BE ESTABLISHED BY CUSTOMER
5. MANUFACTURING TOLERANCE FOR 1.07mm DIAMETER FINISHED HOLE:
 DRILLED HOLE = 1.15+/-0.03mm
 COPPER PLATE = 0.050/0.025mm (MAX HARDNESS 150 KNOOP)
 TIN/LEAD PLATE (HASL) = 0.010/0.004mm
6. MANUFACTURING TOLERANCE FOR 0.70mm DIAMETER FINISHED HOLE:
 DRILLED HOLE = 0.78+/-0.03mm
 COPPER PLATE = 0.050/0.025mm (MAX HARDNESS 150 KNOOP)
 TIN/LEAD PLATE (HASL) = 0.010/0.004mm



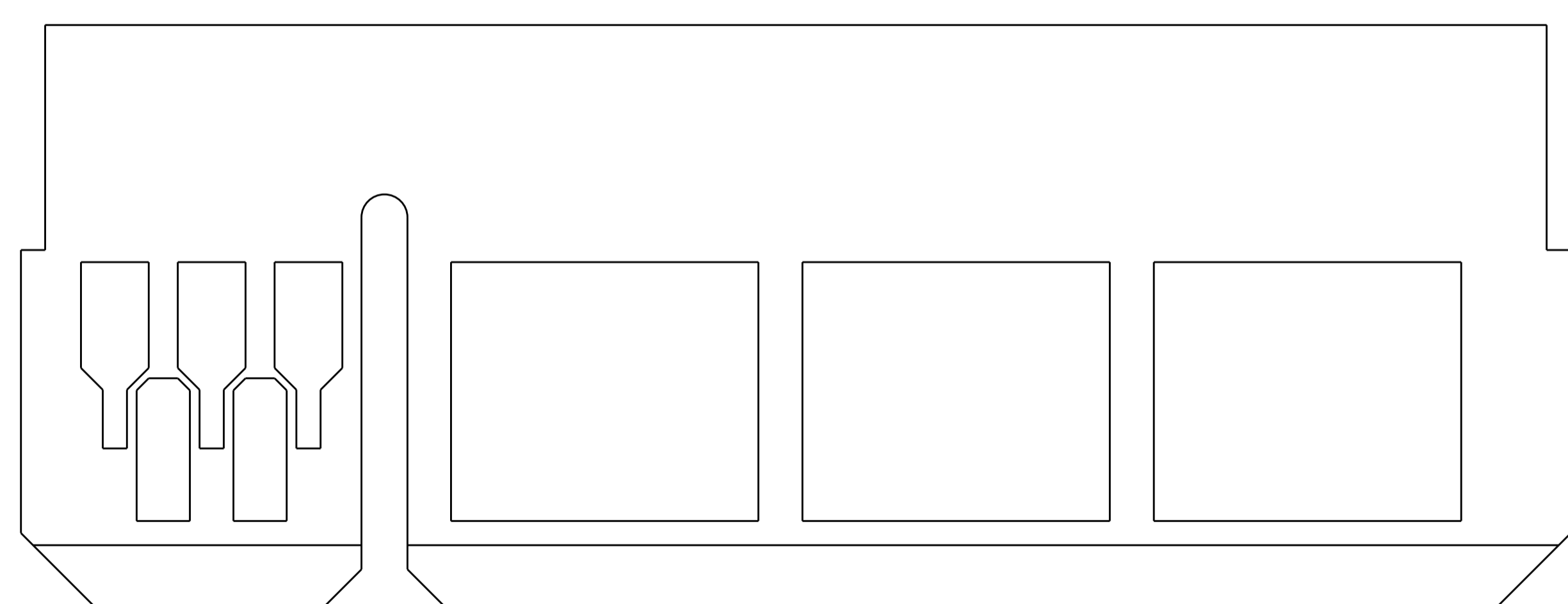
PART 2204072-1

THIS DRAWING IS A CONTROLLED DOCUMENT.		DWN L.A.WENSEL 05APR2012	TE Connectivity
DIMENSIONS: mm		CHK D.DEFIRAUGH 05APR2012	
TOLERANCES UNLESS OTHERWISE SPECIFIED:		APVD S.FLICKINGER 05APR2012	NAME
0 PLC ±	1 PLC ±0.5	PRODUCT SPEC	CONNECTOR ASSEMBLY, MULTI-BEAM CE
2 PLC ±0.25	3 PLC ±	APPLICATION SPEC	POWER/SIGNAL, VERTICAL,
4 PLC ±	ANGLES ±0.5°	FINISH	EYE OF THE NEEDLE
MATERIAL SEE NOTE 1	FINISH SEE NOTE 2	WEIGHT	SIZE CAGE CODE DRAWING NO RESTRICTED TO
CUSTOMER DRAWING		A1 00779 ©=2204072	SCALE 3:1 SHEET 1 OF 3 REV A

REVISIONS				
P.	LTN	DESCRIPTION	DATE	APVD
-	-	SEE SHEET 1	-	-



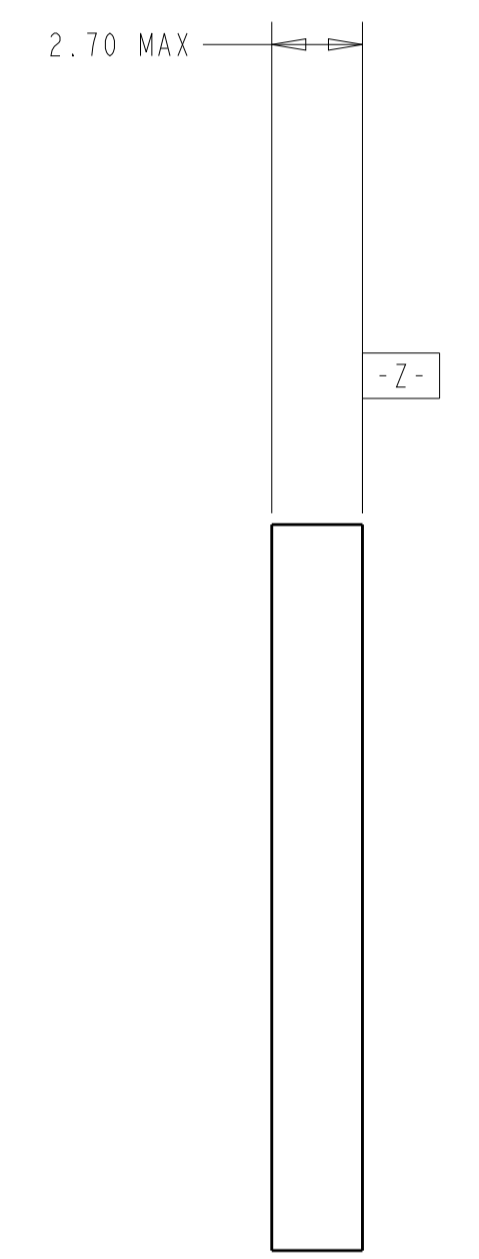
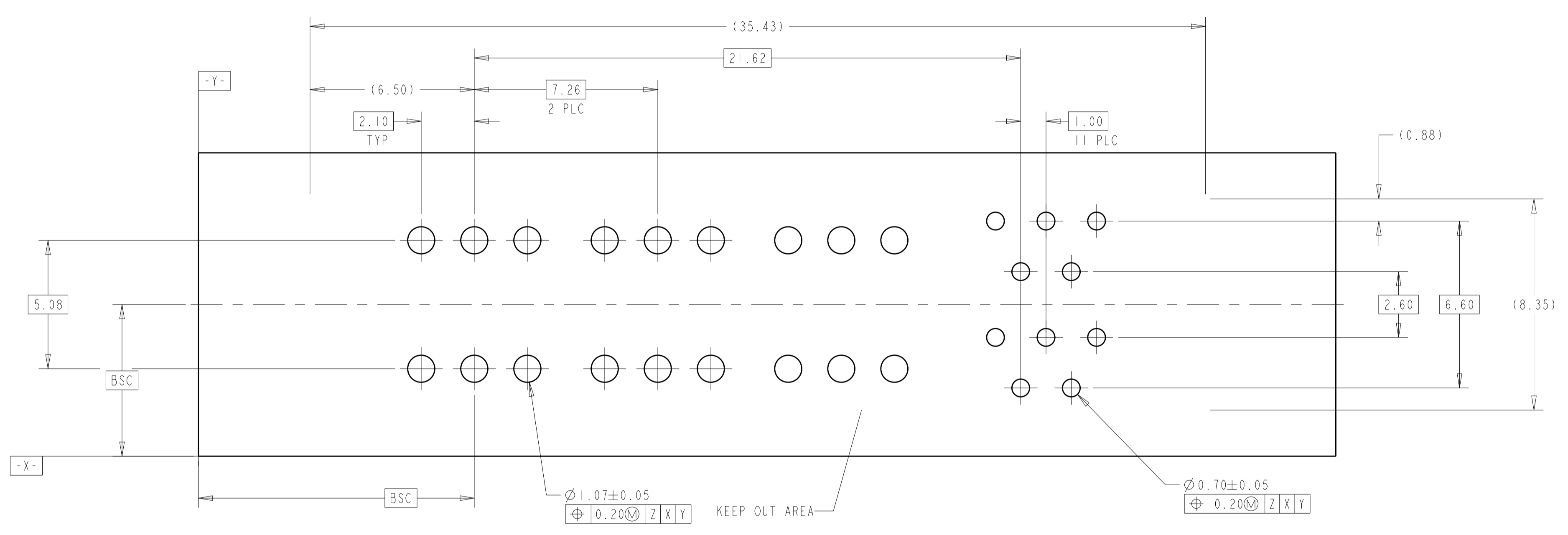
RECOMMENDED MATING CARD EDGE CONFIGURATION



RECOMMENDED MATING CARD EDGE CONFIGURATION
 SECOND SIDE SHOW

THIS DRAWING IS A CONTROLLED DOCUMENT.		DWN L.A. WENSEL 05APR2012	TE Connectivity
DIMENSIONS: mm		CHK D. DEFIBAUGH 05APR2012	
TOLERANCES UNLESS OTHERWISE SPECIFIED:		APVD S. FLICKINGER 05APR2012	NAME
0 PLC	±0.3	PRODUCT SPEC	CONNECTOR ASSEMBLY, MULTI-BEAM CE
1 PLC	±0.13	APPLICATION SPEC	POWER/SIGNAL, VERTICAL,
2 PLC	±	RESTRICTED TO	EYE OF THE NEEDLE
3 PLC	±	SIZE	A1
4 PLC	±	CAGE CODE	00779
ANGLES	±6°	DRAWING NO	2204072
FINISH	SEE NOTE 2	WEIGHT	-
MATERIAL	SEE NOTE 1	CUSTOMER DRAWING	SCALE 4:1 SHEET 2 OF 3 REV A

REVISIONS				
P.	LTN	DESCRIPTION	DATE	OWN APVD
-	-	SEE SHEET 1	-	-



RECOMMEND FOOTPRINT

THIS DRAWING IS A CONTROLLED DOCUMENT.		DWN L.A. WENSEL 05APR2012	TE Connectivity
DIMENSIONS: mm		CHK D. DEFIBAUGH 05APR2012	
TOLERANCES UNLESS OTHERWISE SPECIFIED: 0 PLC ± 1 PLC ±0.3 2 PLC ±0.13 3 PLC ± 4 PLC ± ANGLES ±6°		APVD S. FLICKINGER 05APR2012	NAME
MATERIAL SEE NOTE 1		FINISH SEE NOTE 2	PRODUCT SPEC
CUSTOMER DRAWING		WEIGHT	APPLICATION SPEC
SCALE 4:1		SIZE A1	CAGE CODE DRAWING NO. RESTRICTED TO
SHEET 3 OF 3		00779 C=2204072	CONECTOR ASSEMBLY, MULTI-BEAM CE POWER/SIGNAL, VERTICAL, EYE OF THE NEEDLE
REV A			