



Chipsmall Limited consists of a professional team with an average of over 10 year of expertise in the distribution of electronic components. Based in Hongkong, we have already established firm and mutual-benefit business relationships with customers from,Europe,America and south Asia,supplying obsolete and hard-to-find components to meet their specific needs.

With the principle of “Quality Parts,Customers Priority,Honest Operation,and Considerate Service”,our business mainly focus on the distribution of electronic components. Line cards we deal with include Microchip,ALPS,ROHM,Xilinx,Pulse,ON,Everlight and Freescale. Main products comprise IC,Modules,Potentiometer,IC Socket,Relay,Connector.Our parts cover such applications as commercial,industrial, and automotives areas.

We are looking forward to setting up business relationship with you and hope to provide you with the best service and solution. Let us make a better world for our industry!



Contact us

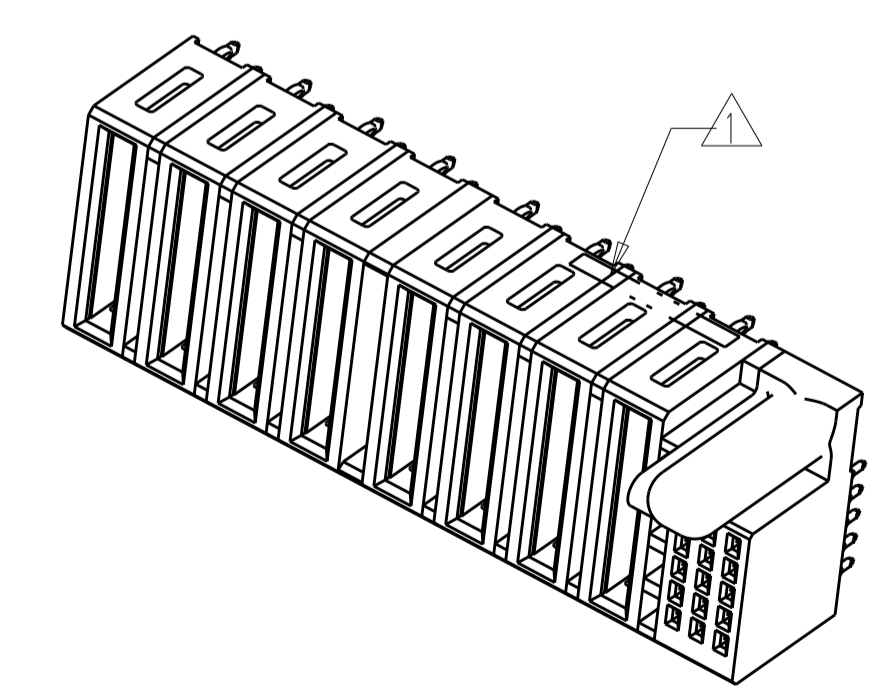
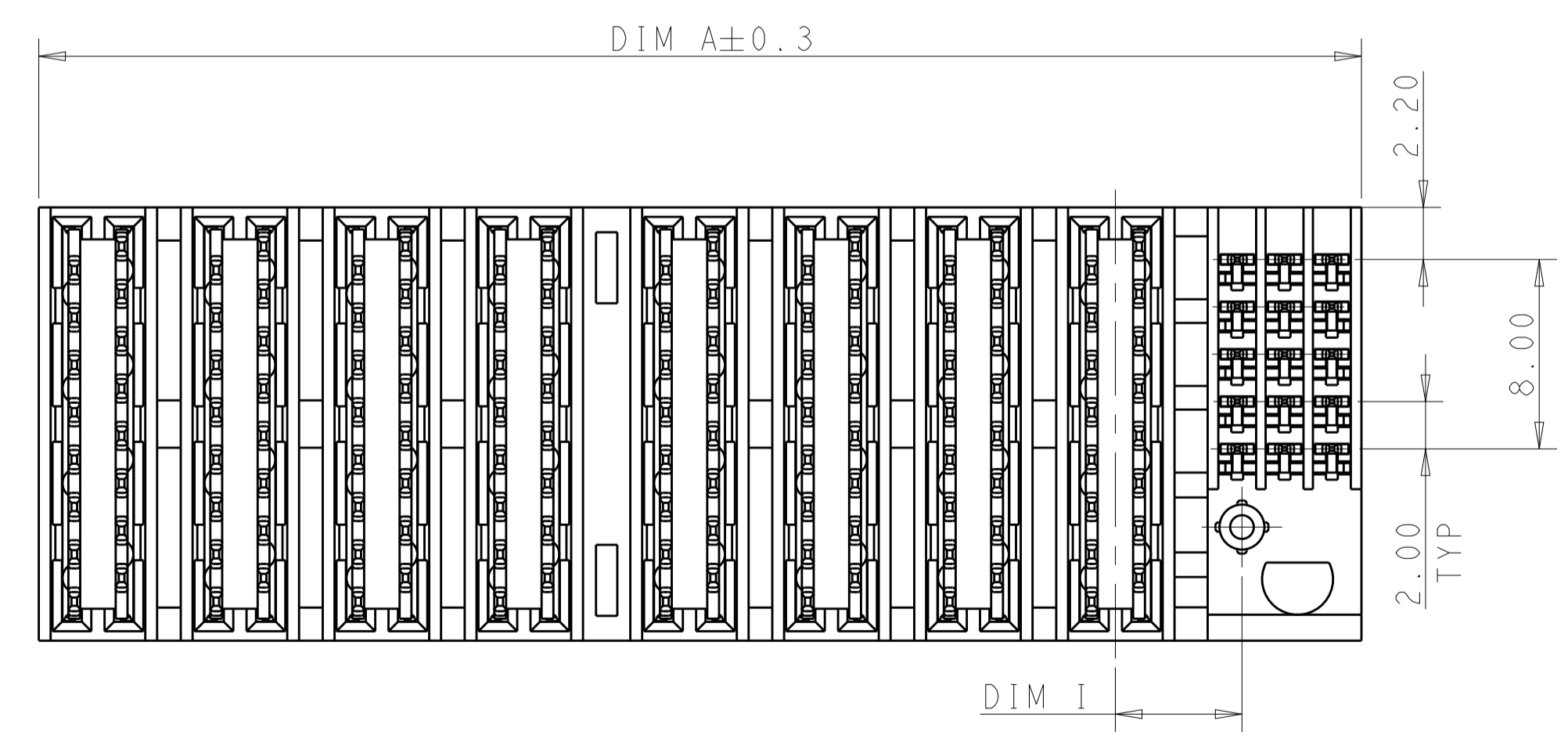
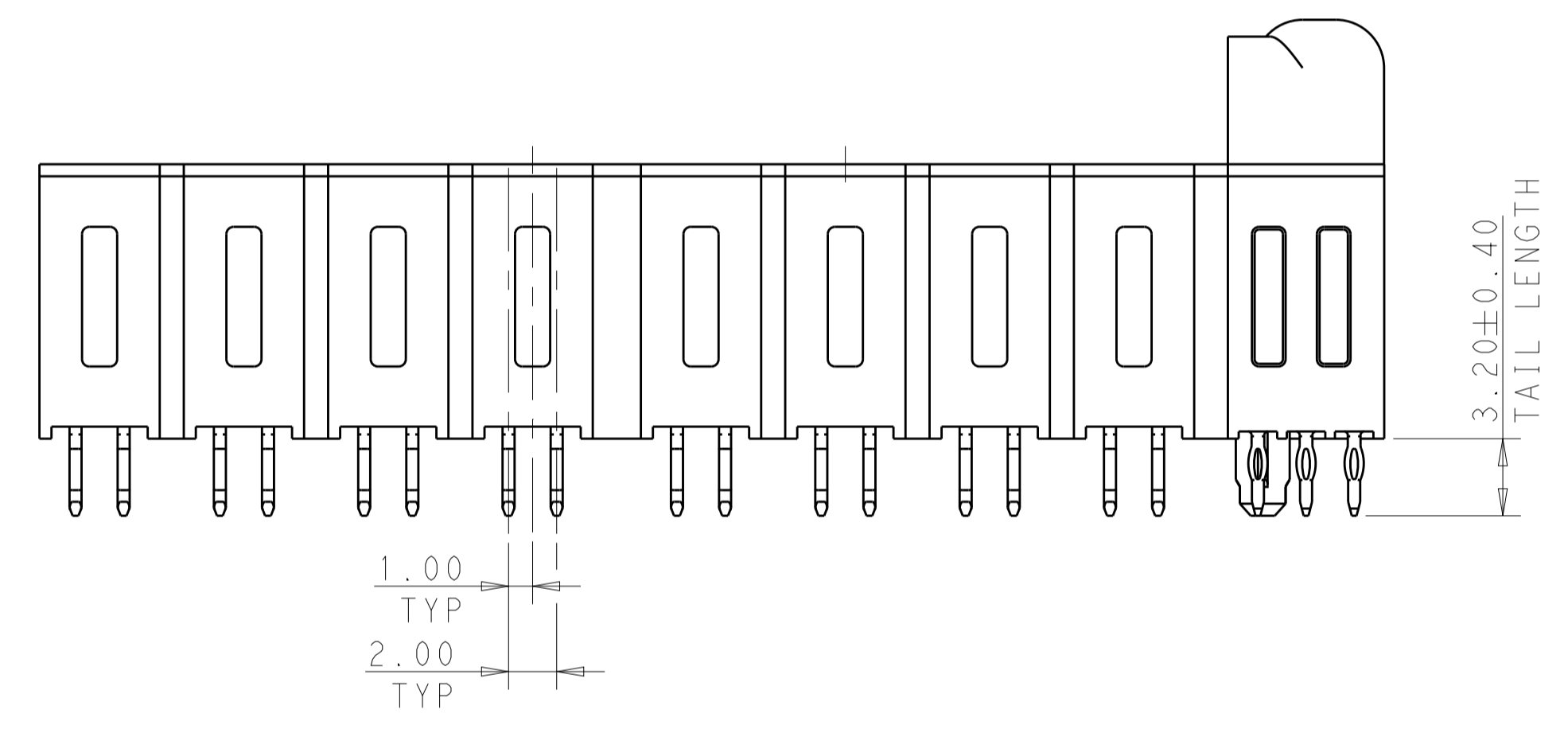
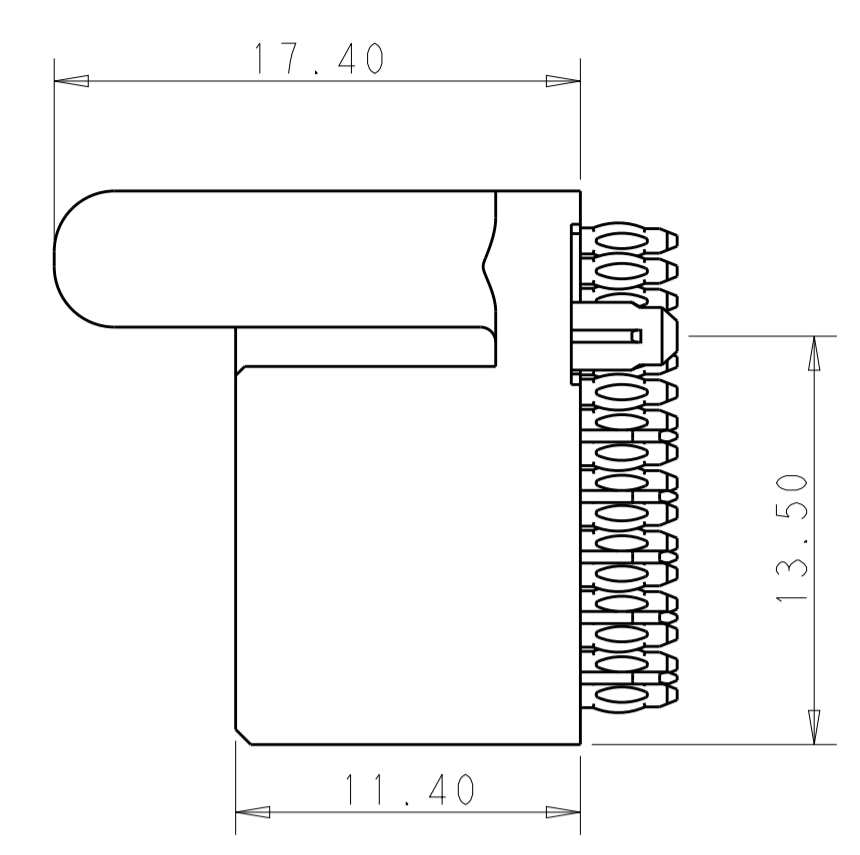
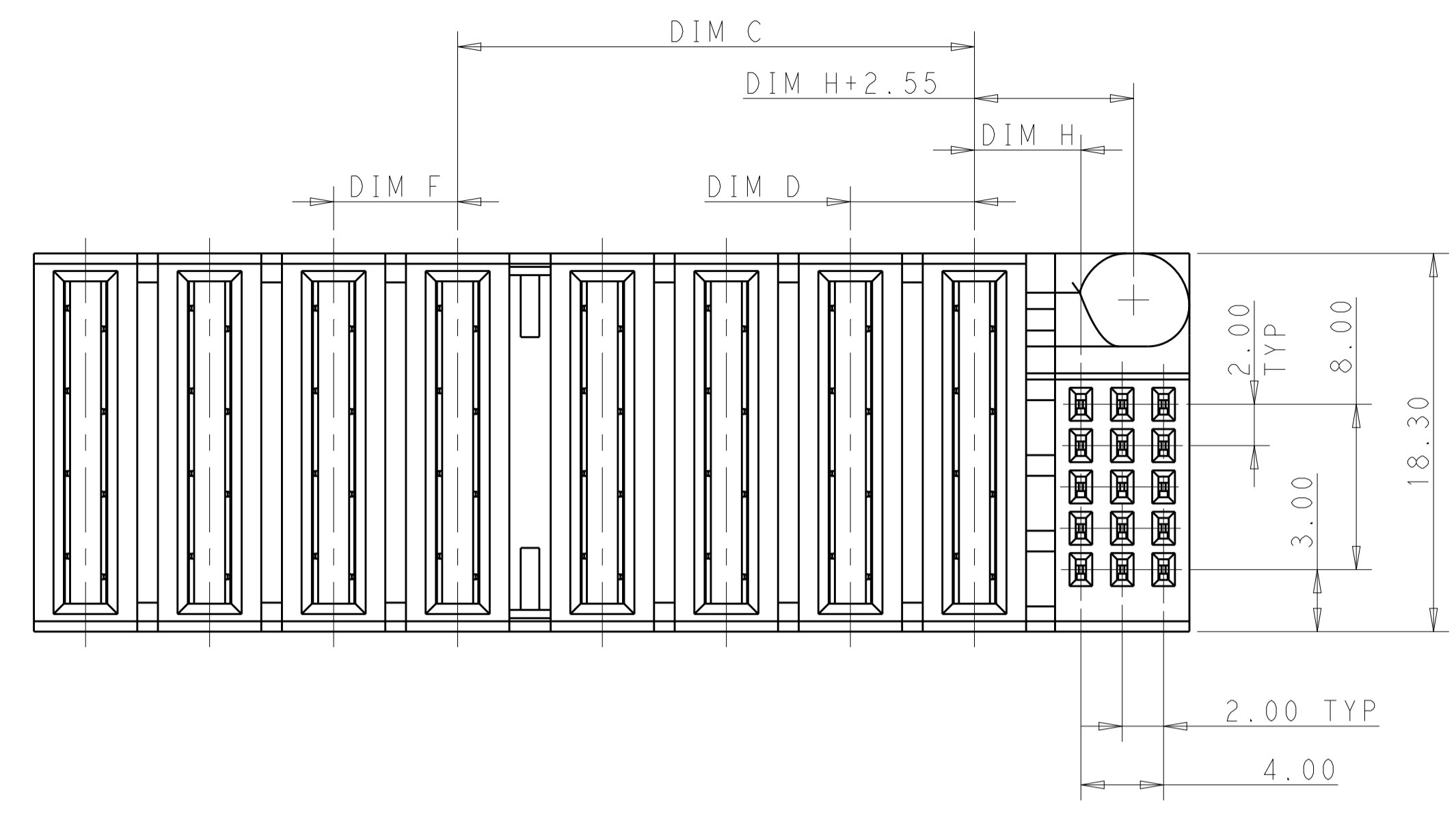
Tel: +86-755-8981 8866 Fax: +86-755-8427 6832

Email & Skype: info@chipsmall.com Web: www.chipsmall.com

Address: A1208, Overseas Decoration Building, #122 Zhenhua RD., Futian, Shenzhen, China



LOC		DIST		REVISIONS			
P	LTN	DESCRIPTION	DATE	DWN	APVD		
A1	ECR-16-004133		18MAR2016	TZ	SZ		
A2	ECR-17-000307		10JAN2017	TZ	SZ		
A3	ECR-17-014048		23OCT2017	TZ	SZ		
A4	ECR-18-000463		12JAN2018	TZ	SZ		



NOTES, UNLESS OTHERWISE SPECIFIED:

1. "TE", PART NUMBER AND DATE CODE TO BE MARKED IN AREA SHOWN.

2. MATERIAL:
 HOUSING - GLASS FILLED HIGH TEMP THERMO PLASTIC,
 COLOR: BLACK, UL94 V- 0.
 SIGNAL CONTACT - HIGH CONDUCTIVITY COPPER ALLOY.
 POWER CONTACT - HIGH CONDUCTIVITY COPPER ALLOY.

3. CONTACT PLATING:
 MATING AREA - NOBLE METAL OVERALL NICKEL
 TAIL SIDE AREA - MATTE TIN OVERALL NICKEL.

4. MECHANICAL CONNECTOR KEEP OUT ZONE.

5. DATUM AND BASIC DIMENSIONS ESTABLISHED BY CUSTOMER.

6. PCB - ALL HOLE DIAMETERS ARE FINISHED HOLE SIZES.

7. PCB HOLE:
 POWER - 1.15 ± 0.025 MM DRILLED HOLES SIZE PLATING WITH 0.0076 MM MIN.
 Sn OVER 0.025-0.076 MM Cu PLATING TO ACHIEVE A 1.02 MM DIA. HOLE.
 SIGNAL - 0.835 ± 0.025 MM DRILLED HOLES SIZE PLATING WITH 0.0076 MM MIN.
 Sn OVER 0.025-0.076 MM Cu PLATING TO ACHIEVE A 0.72 MM DIA. HOLE.

35.90	4.50	15.00	5.00	10.00	5.00	8.15	8.35	2P+2LP+2P+20S	2204426-7
17.90	-	-	5.00	-	-	5.15	5.35	2P+15S	2204426-4
27.90	-	-	5.00	-	-	5.15	5.35	4P+15S	2204426-3
17.90	-	-	5.00	-	-	5.15	5.35	2P+15S	2204426-2
55.90	-	25.00	6.00	-	6.00	5.15	5.35	15S+4VP+4VP	2204426-1
DIM A	DIM B	DIM C	DIM D	DIM E	DIM F	DIM H	DIM I	DESCRIPTION	PART NUMBER

THIS DRAWING IS A CONTROLLED DOCUMENT. DWN: THOMAS ZHAO, Z0DEC2012
 CHK: SUNY ZHAO, Z0DEC2012
 APVD: SUNY ZHAO, Z0DEC2012

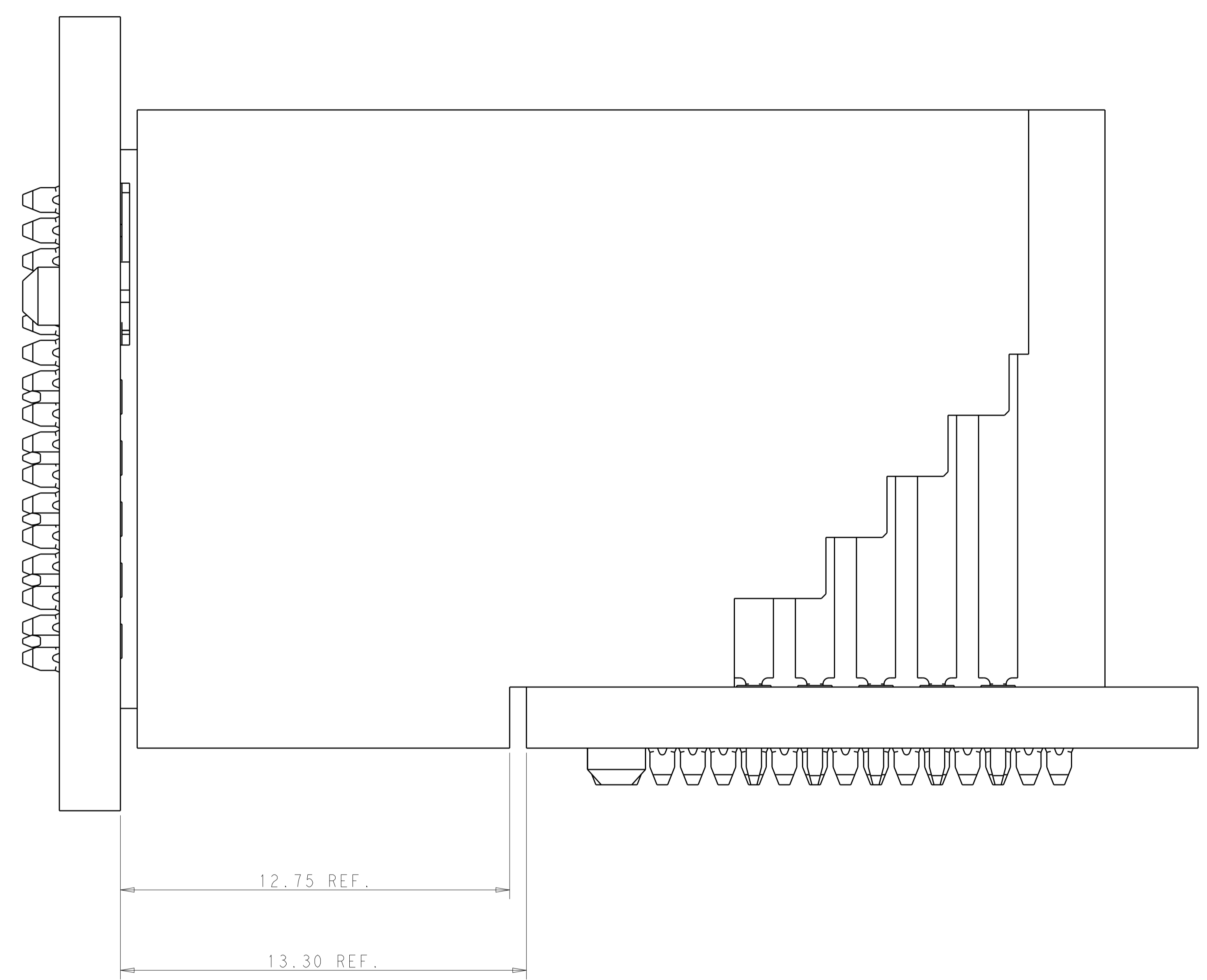
STE TE Connectivity

Customer Drawing
 VERTICAL RECEPTACLE
 MULTI-BEAM HD P+S


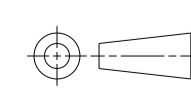
SIZE: A1, CAGE CODE: 2204426, DRAWING NO: 2204426

SCALE: 2:1, SHEET 1 OF 4, REV: A4

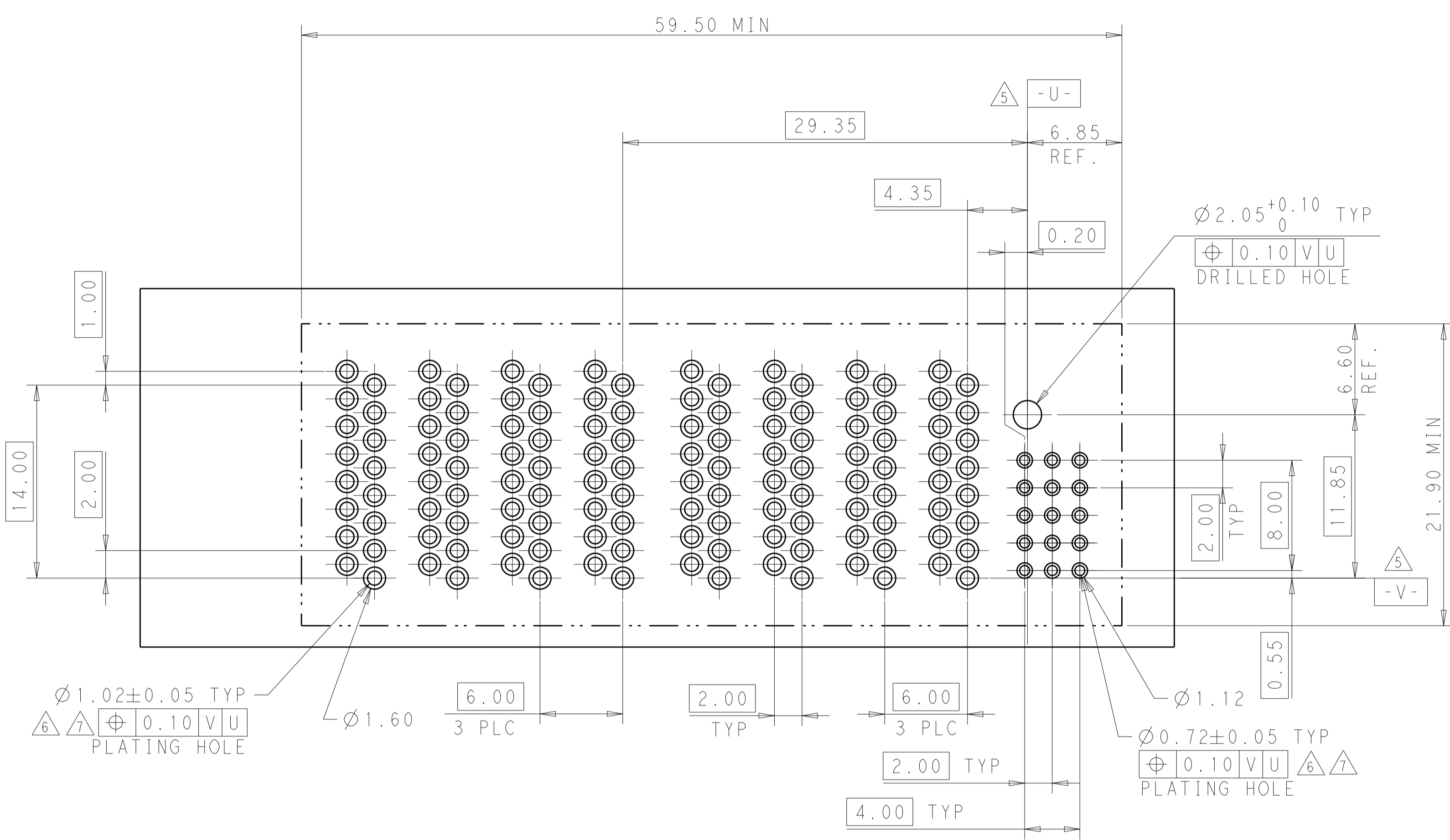
LOC		DIST		REVISIONS			
P	LTN	DESCRIPTION	DATE	DMN	APVD		
-	-	SEE SHEET 1	-	-	-		



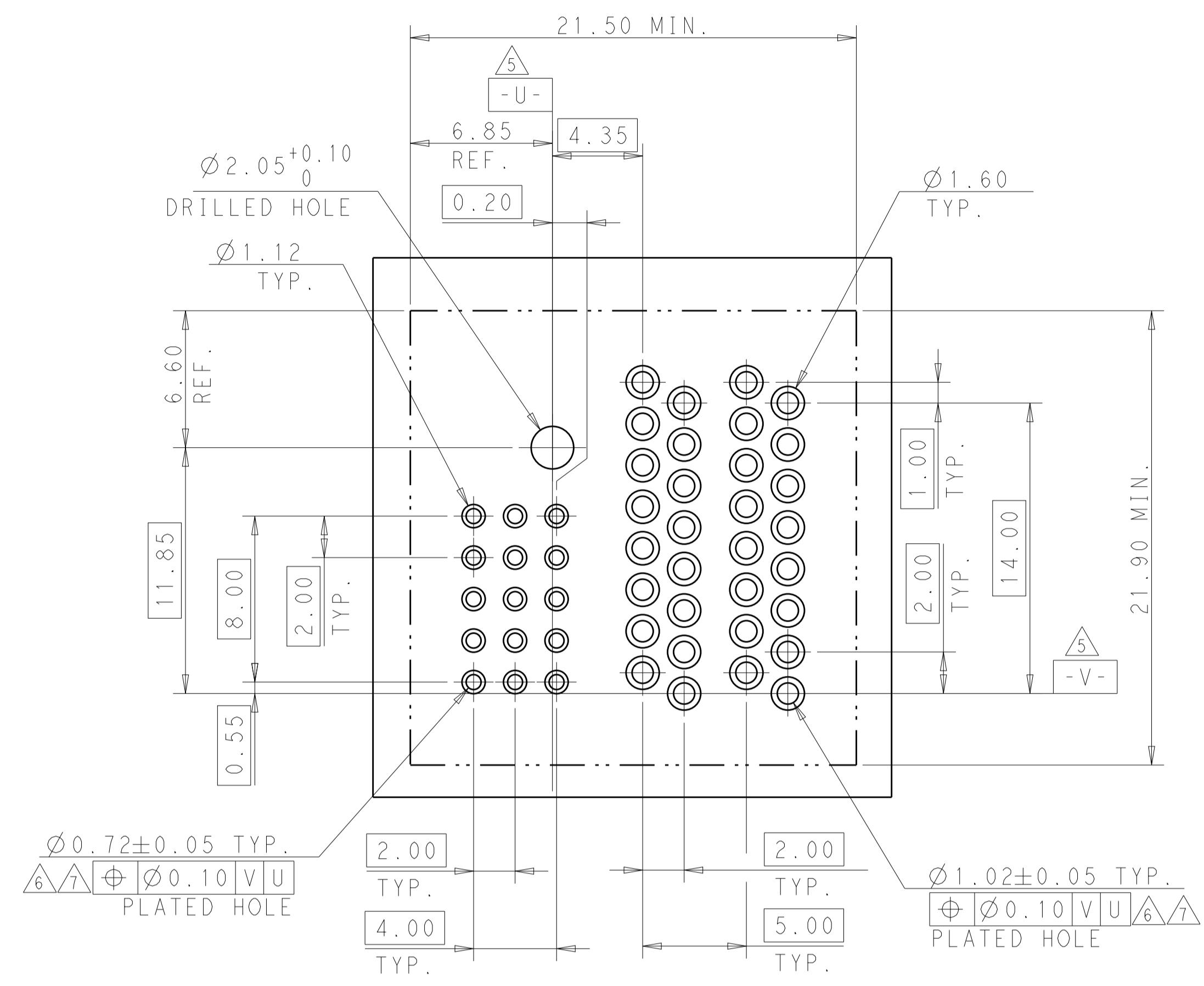
THE DISTANCE IS 0.05 MM MATING FACE FROM R/A HEADER TO VERTICAL RECEPTACLE.

THIS DRAWING IS A CONTROLLED DOCUMENT.		DMN THOMAS_ZHAO Z0DEC2012	 TE Connectivity
DIMENSIONS: mm		CHK SUNY_ZHAO Z0DEC2012	
TOLERANCES UNLESS OTHERWISE SPECIFIED:		APVD SUNY_ZHAO Z0DEC2012	NAME Customer Drawing
0 PLC ±0.4		PRODUCT SPEC	VERTICAL RECEPTACLE
1 PLC ±0.4		APPLICATION SPEC	MULTI-BEAM HD P+S
2 PLC ±0.75		RESTRICTED TO	
3 PLC ±1.15			
4 PLC ±		SIZE CAGE CODE DRAWING NO	A100779C=2204426
ANGLES ±		WEIGHT	
MATERIAL	FINISH	CUSTOMER DRAWING	SCALE 2:1 SHEET 2 OF 4 REV A4

LOC	DIST	REVISIONS			
P	LTN	DESCRIPTION	DATE	DMN	APVD
-	-	SEE SHEET 1	-	-	-



THE CUTOUT OF PART NUMBER: 2204426-1



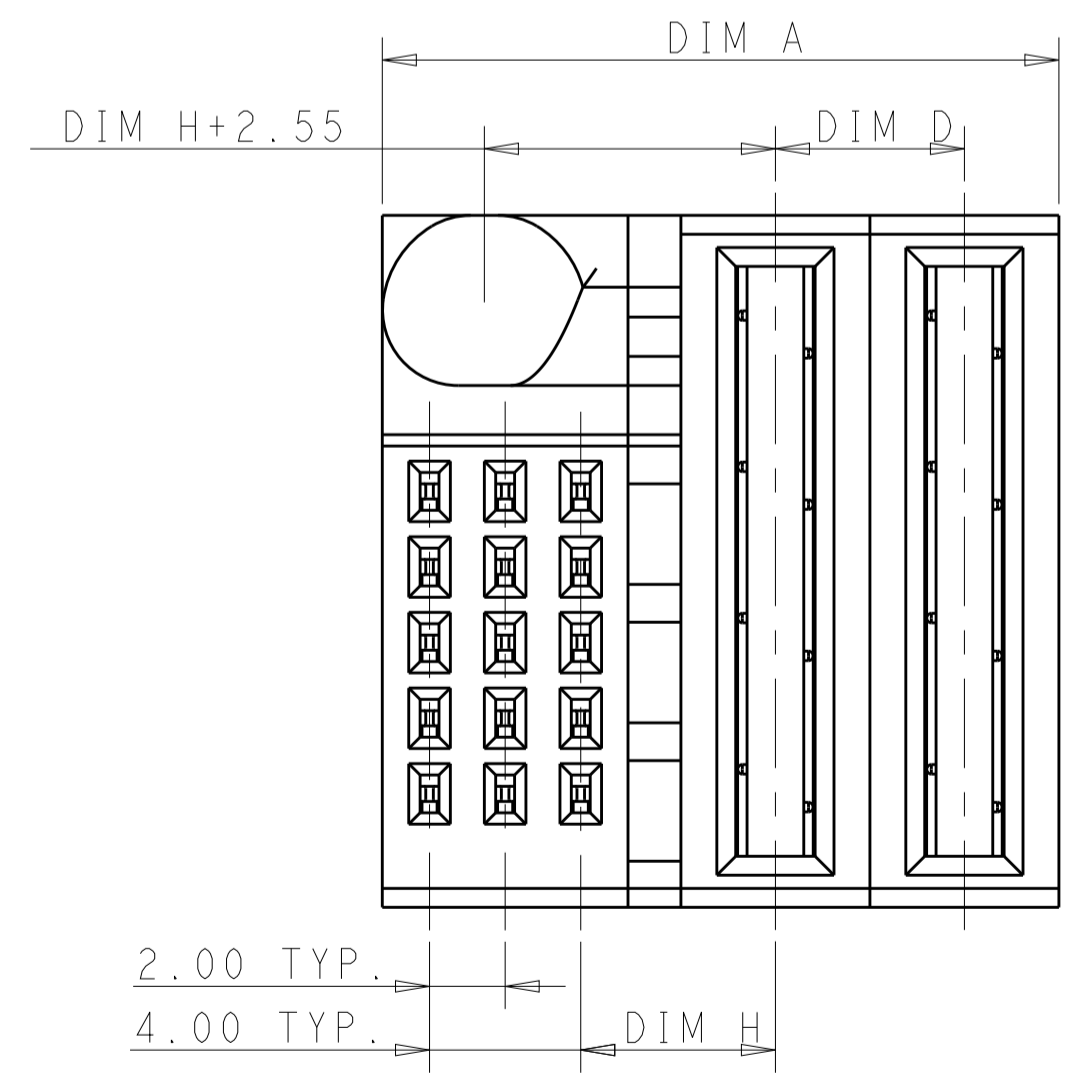
THE CUTOUT OF PART NUMBER: 2204426-2/4

PART NUMBER	ROWS	POWER								SIGNAL		
		P8	P7	P6	P5	P4	P3	P2	P1	3	2	1
2204426-1	E	PM	PM	PM	PM	PM	PM	PM	PM	[Symbol]		
	D									SM	SM	SM
	C									SM	SM	SM
	B									SM	SM	SM
	A									SM	SM	SM

15S+4VP+4VP

PART NUMBER	ROWS	SIGNAL		POWER		
		3	2	1	P2	P1
2204426-2	E	SM	SM	SM	PM	PM
	D	SM	SM	SM		
	C	SM	SM	SM		
	B	SM	SM	SM		
	A	SM	SM	SM		

2P+15S

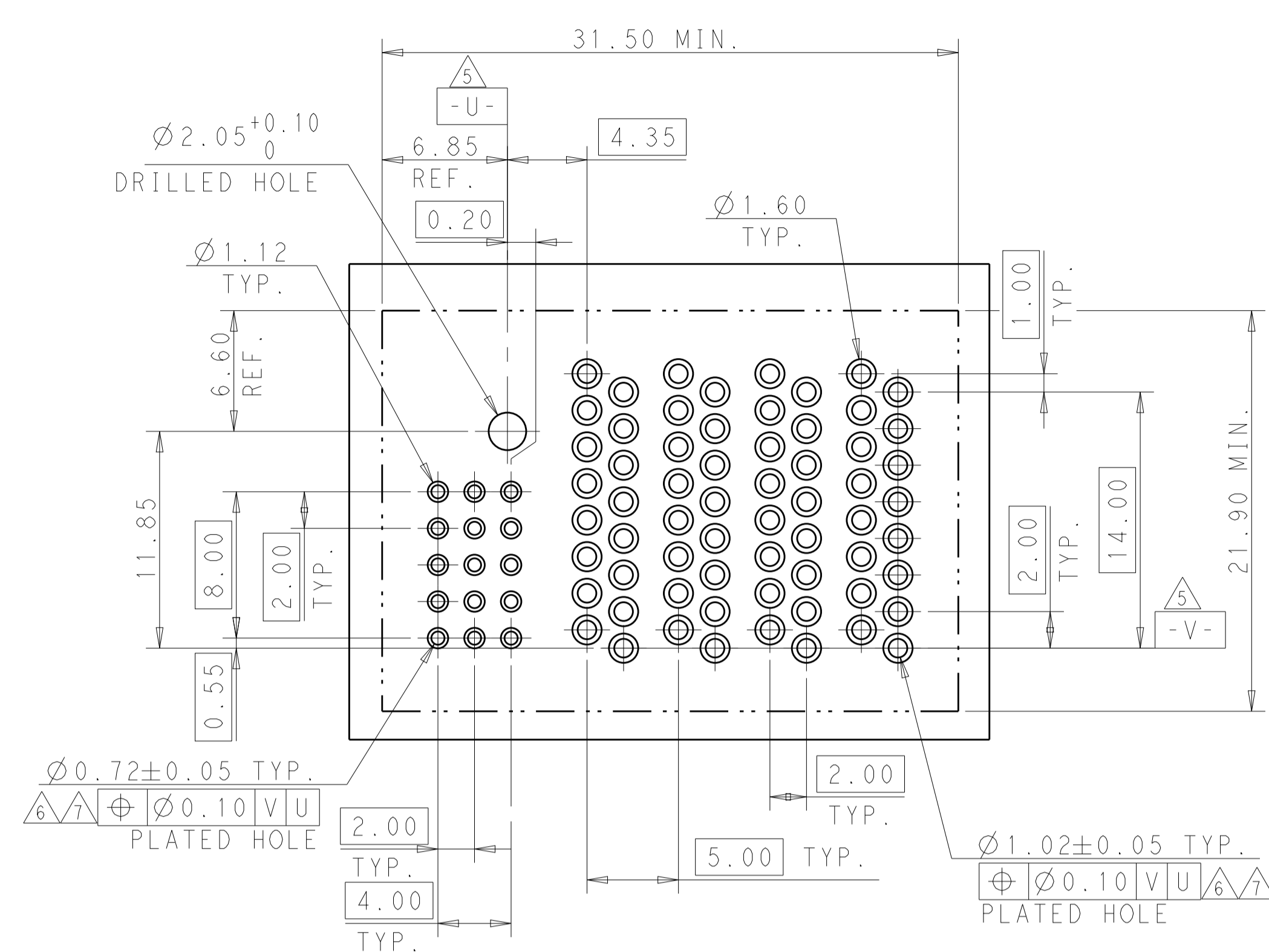


PART NUMBER: 2204426-2

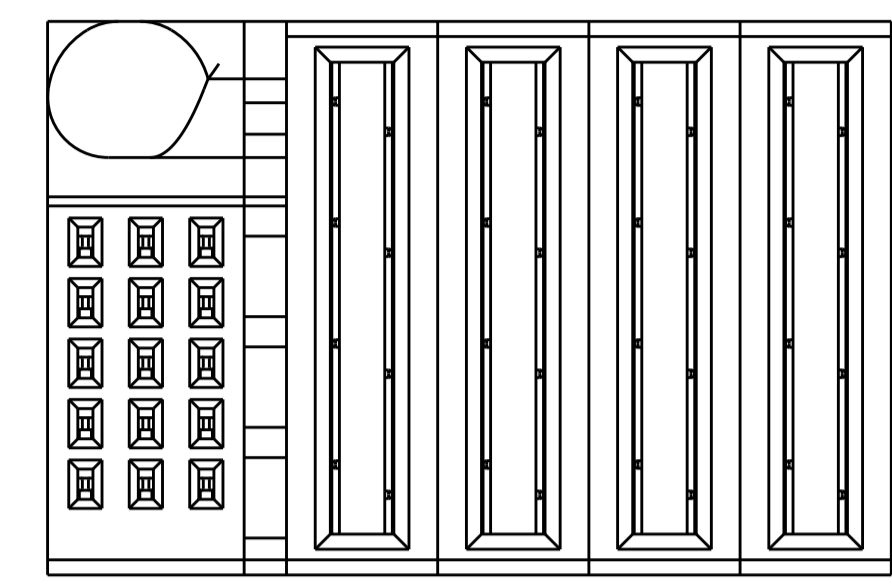
DESCRIPTION	IDENTIFIER
SIGNAL CONTACT	SM1
BOTTOM LOW POWER CONTACT STANDARD	LN2
BOTTOM LOW POWER CONTACT MFBL	LM2
TOP LOW POWER CONTACT STANDARD	LN1
TOP LOW POWER CONTACT MFBL	LM1
POWER CONTACT STANDARD	PN
POWER CONTACT MFBL	PM

THIS DRAWING IS A CONTROLLED DOCUMENT.		DMN THOMAS ZHAO Z0DEC2012	STE TE Connectivity
DIMENSIONS: mm		CHK SUNY ZHAO Z0DEC2012	
TOLERANCES UNLESS OTHERWISE SPECIFIED:		APVD SUNY ZHAO Z0DEC2012	NAME Customer Drawing VERTICAL RECEPTACLE MULTI-BEAM HD P+S
0 PLC ±0.4		PRODUCT SPEC	
1 PLC ±0.4		APPLICATION SPEC	SIZE CAGE CODE DRAWING NO
2 PLC ±0.75		WEIGHT	RESTRICTED TO
3 PLC ±1.5		CUSTOMER DRAWING	A100779C=2204426
4 PLC ±		SCALE 2:1	SHEET 3 OF 4
ANGLES ±		REV A4	

LOC	DIST	REVISIONS					
		P	LTN	DESCRIPTION	DATE	DMN	APVD
		-		SEE SHEET 1			



PART NUMBER	ROWS	SIGNAL			POWER			
		3	2	1	P4	P3	P2	P1
2204426-3	E	SM	SM	SM	PM	PM	PM	PM
	D	SM	SM	SM				
	C	SM	SM	SM				
	B	SM	SM	SM				
	A	SM	SM	SM				
4P+15S								

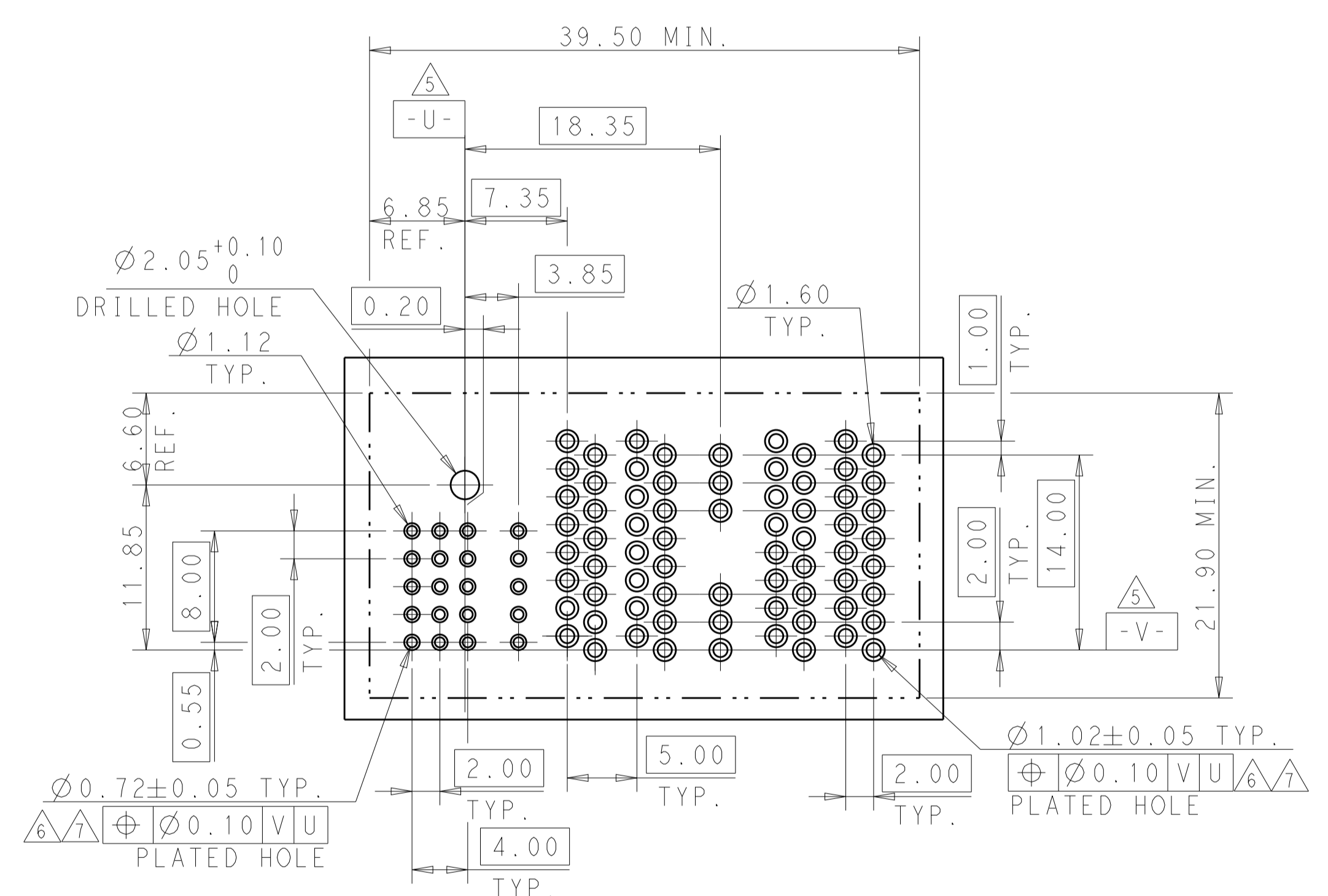


PART NUMBER: 2204426-3

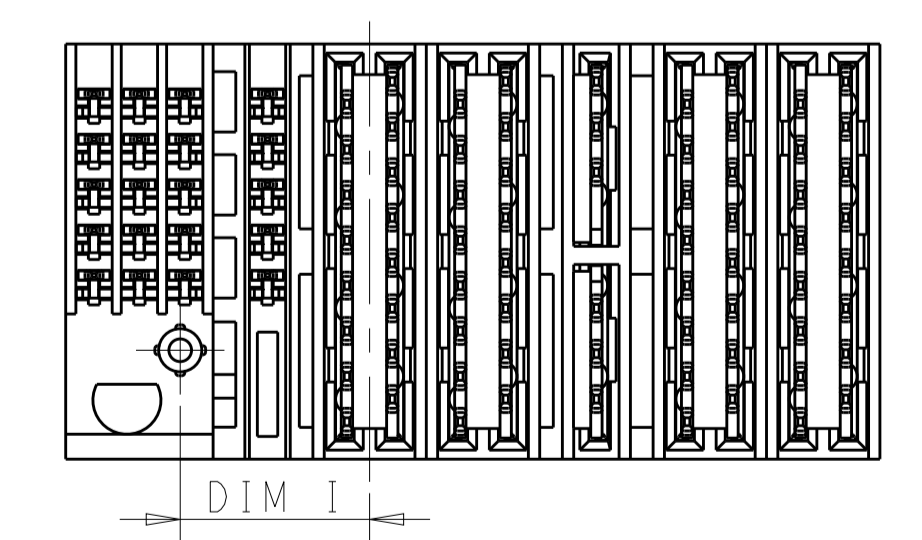
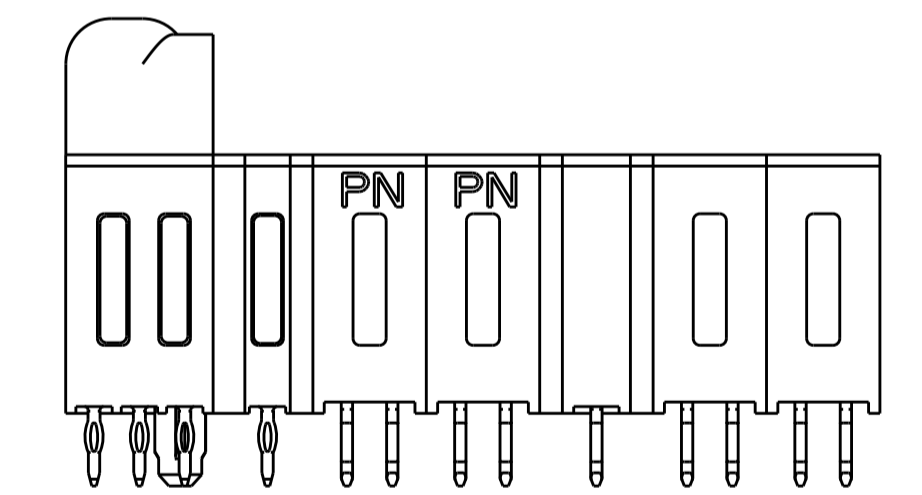
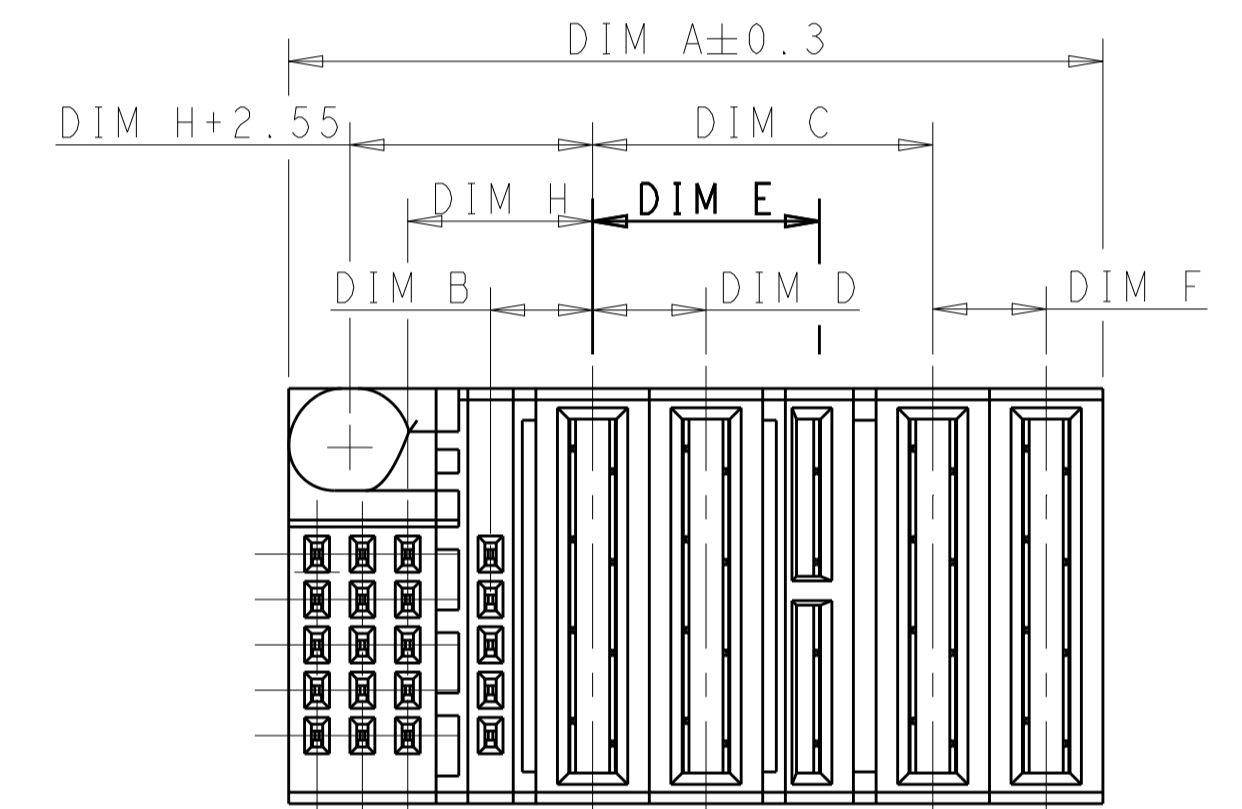
PART NUMBER	ROWS	SIGNAL			POWER	
		3	2	1	P2	P1
2204426-4	E	SM	SM	SM	PM	PN
	D	SM	SM	SM		
	C	SM	SM	SM		
	B	SM	SM	SM		
	A	SM	SM	SM		
2P+15S						

PART NUMBER	ROWS	SIGNAL				POWER					
		4	3	2	1	P4	P3	LP	P2	P1	
2204426-7	E	SM	SM	SM	SM	PN	PN			PM	PM
	D	SM	SM	SM	SM					LM	LM
	C	SM	SM	SM	SM					M	M
	B	SM	SM	SM	SM						
	A	SM	SM	SM	SM						
2P+2LP+2P+20S											

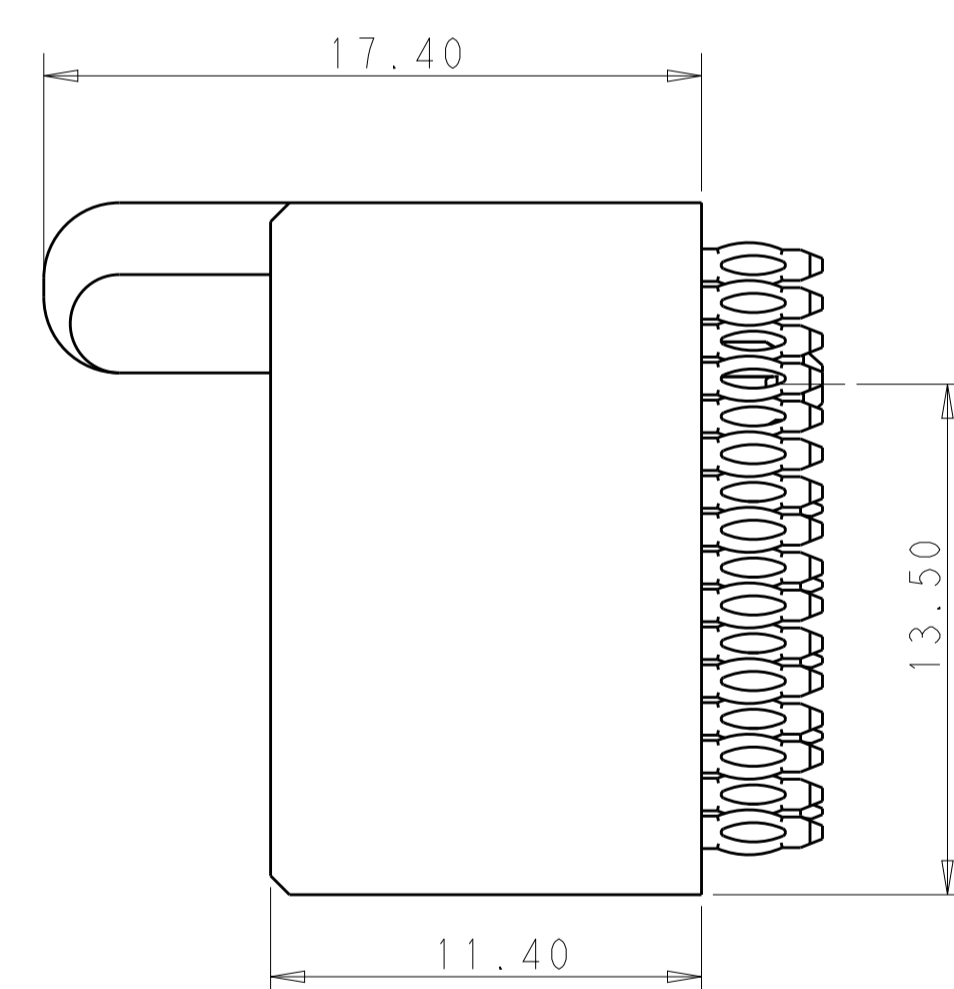
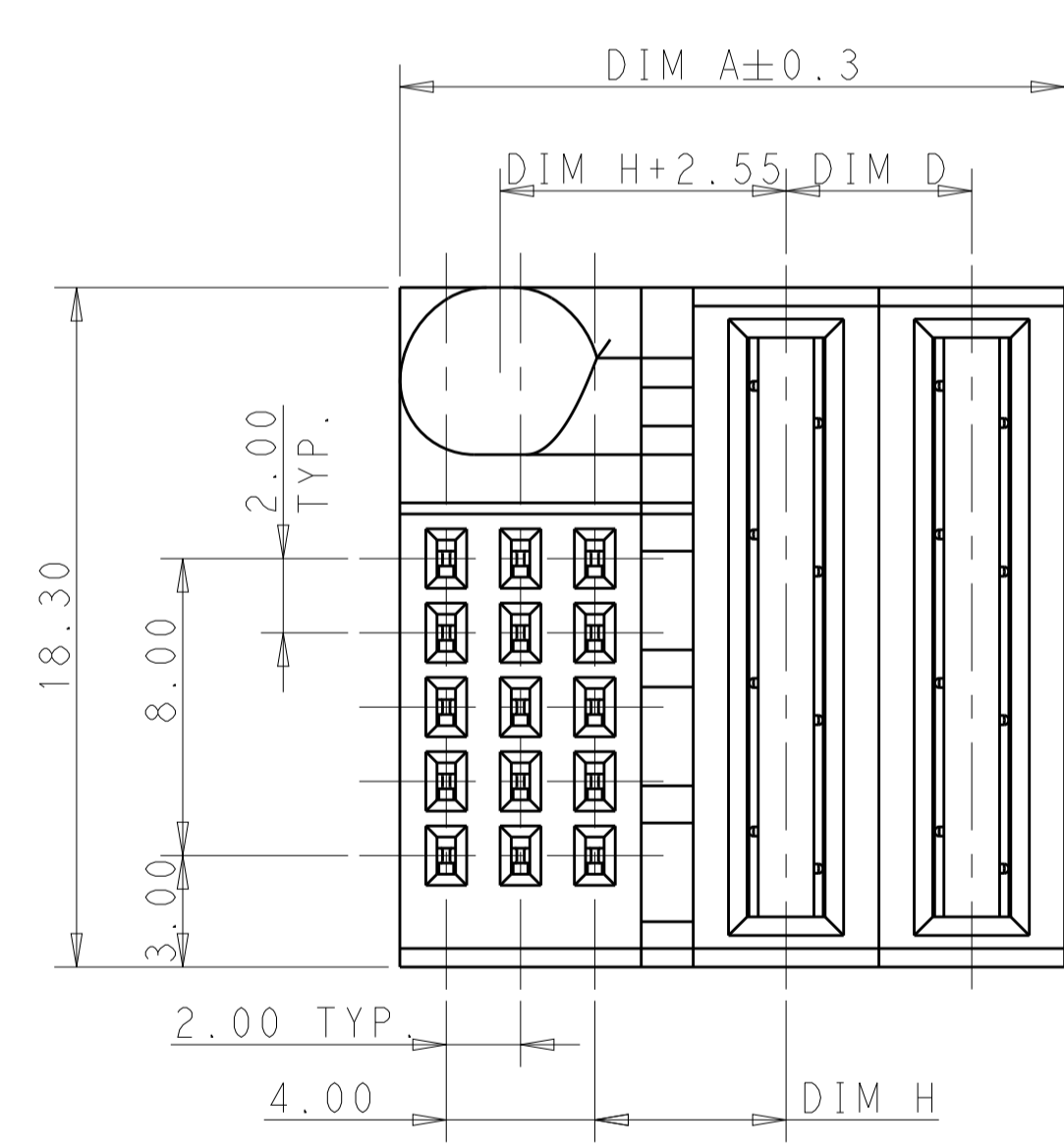
THE PCB LAYOUT OF P/N:2204426-3



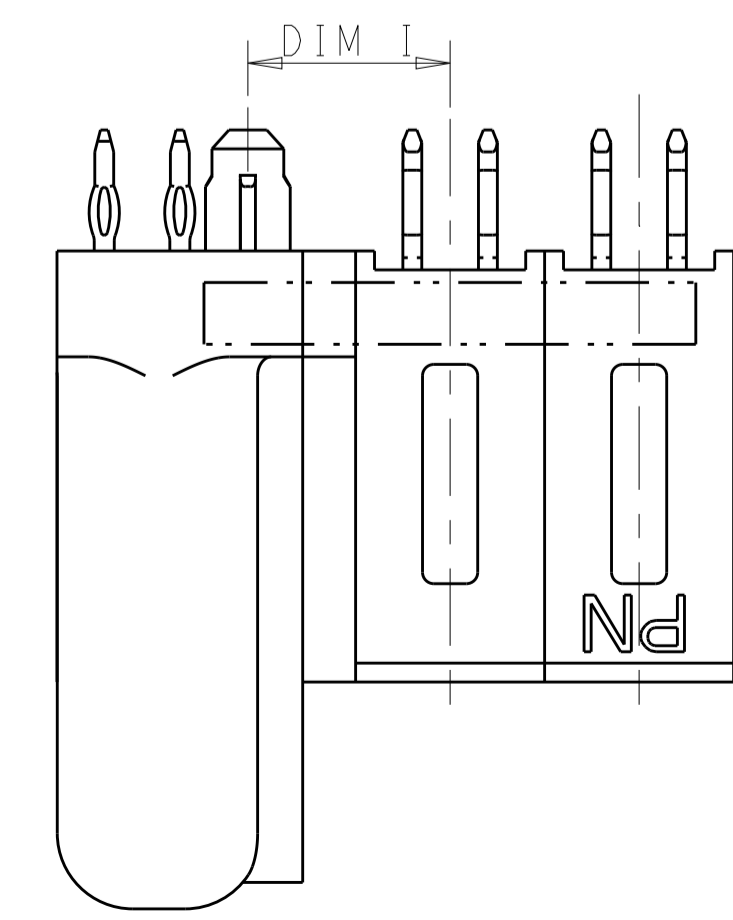
THE PCB LAYOUT OF P/N:2204426-7



PART NUMBER: 2204426-7



PART NUMBER: 2204426-4



THIS DRAWING IS A CONTROLLED DOCUMENT.

DMN: THOMAS ZHAO Z0DEC2012
 CHK: SUNY ZHAO Z0DEC2012
 APVD: SUNY ZHAO Z0DEC2012

DIMENSIONS: mm
 TOLERANCES UNLESS OTHERWISE SPECIFIED:
 0 PLC ± 0.4
 1 PLC ± 0.4
 2 PLC ± 0.25
 3 PLC ± 0.15
 4 PLC ± 0.15
 ANGLES ± 0.15
 FINISH ± 0.15

MATERIAL: -
 FINISH: -

WEIGHT: -
 CUSTOMER DRAWING

NAME: Customer Drawing
 VERTICAL RECEPTACLE
 MULTI-BEAM HD P+S

SIZE: A100779
 CAGE CODE: -
 DRAWING NO: 2204426

RESTRICTED TO: -

SCALE: 2:1
 SHEET: 4 OF 4
 REV: A4