



Chipsmall Limited consists of a professional team with an average of over 10 year of expertise in the distribution of electronic components. Based in Hongkong, we have already established firm and mutual-benefit business relationships with customers from,Europe,America and south Asia,supplying obsolete and hard-to-find components to meet their specific needs.

With the principle of “Quality Parts,Customers Priority,Honest Operation,and Considerate Service”,our business mainly focus on the distribution of electronic components. Line cards we deal with include Microchip,ALPS,ROHM,Xilinx,Pulse,ON,Everlight and Freescale. Main products comprise IC,Modules,Potentiometer,IC Socket,Relay,Connector.Our parts cover such applications as commercial,industrial, and automotives areas.

We are looking forward to setting up business relationship with you and hope to provide you with the best service and solution. Let us make a better world for our industry!



Contact us

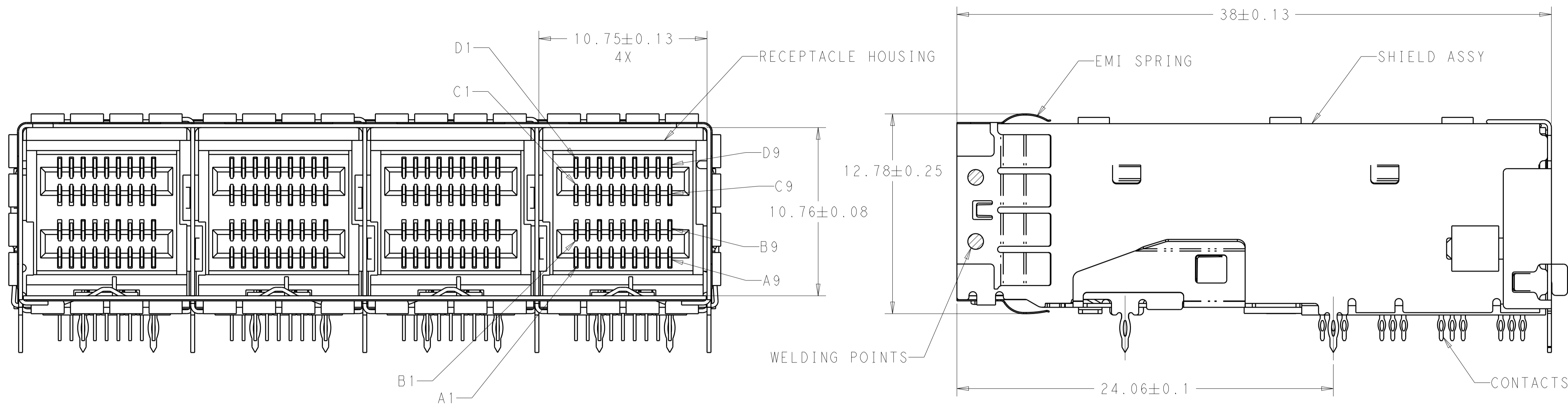
Tel: +86-755-8981 8866 Fax: +86-755-8427 6832

Email & Skype: info@chipsmall.com Web: www.chipsmall.com

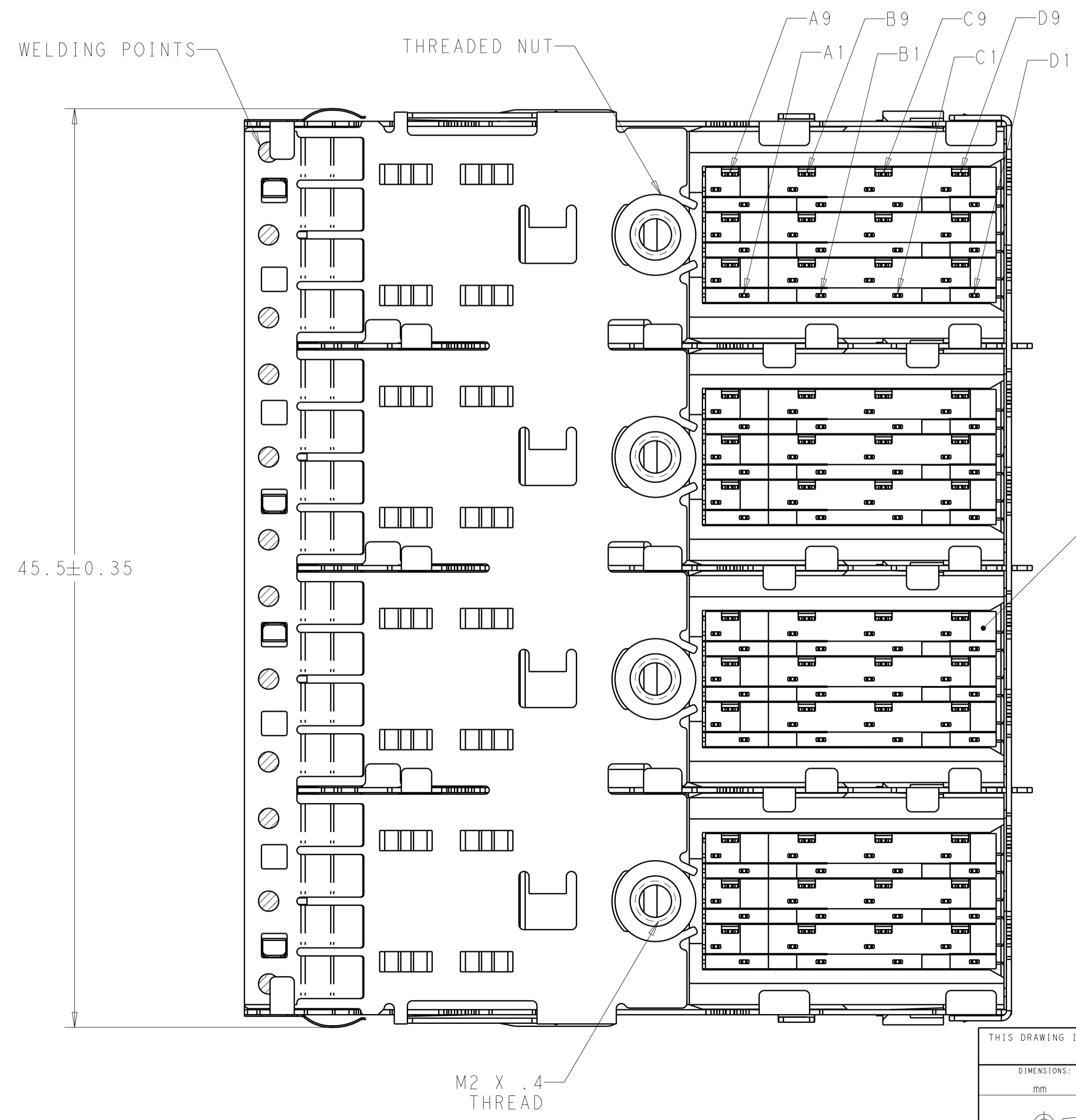
Address: A1208, Overseas Decoration Building, #122 Zhenhua RD., Futian, Shenzhen, China



LOC	DIST	REVISIONS					
		P	LTN	DESCRIPTION	DATE	DWN	APVD
AG	00	A		REVISED PER ECO-14-018497	17DEC2014	AP	DG
		B		REVISED PER ECO-15-013876	19JUN2016	JY	SH



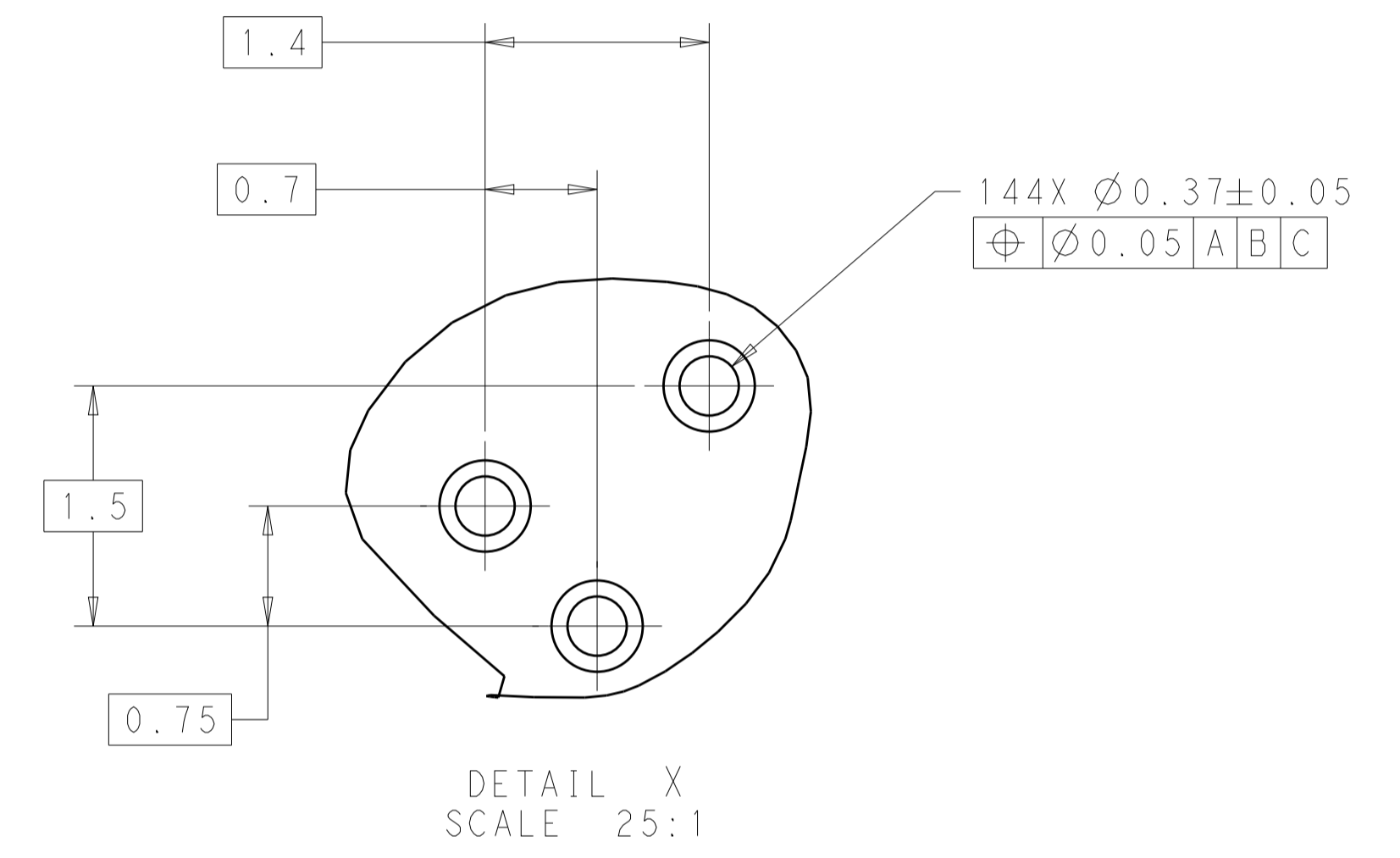
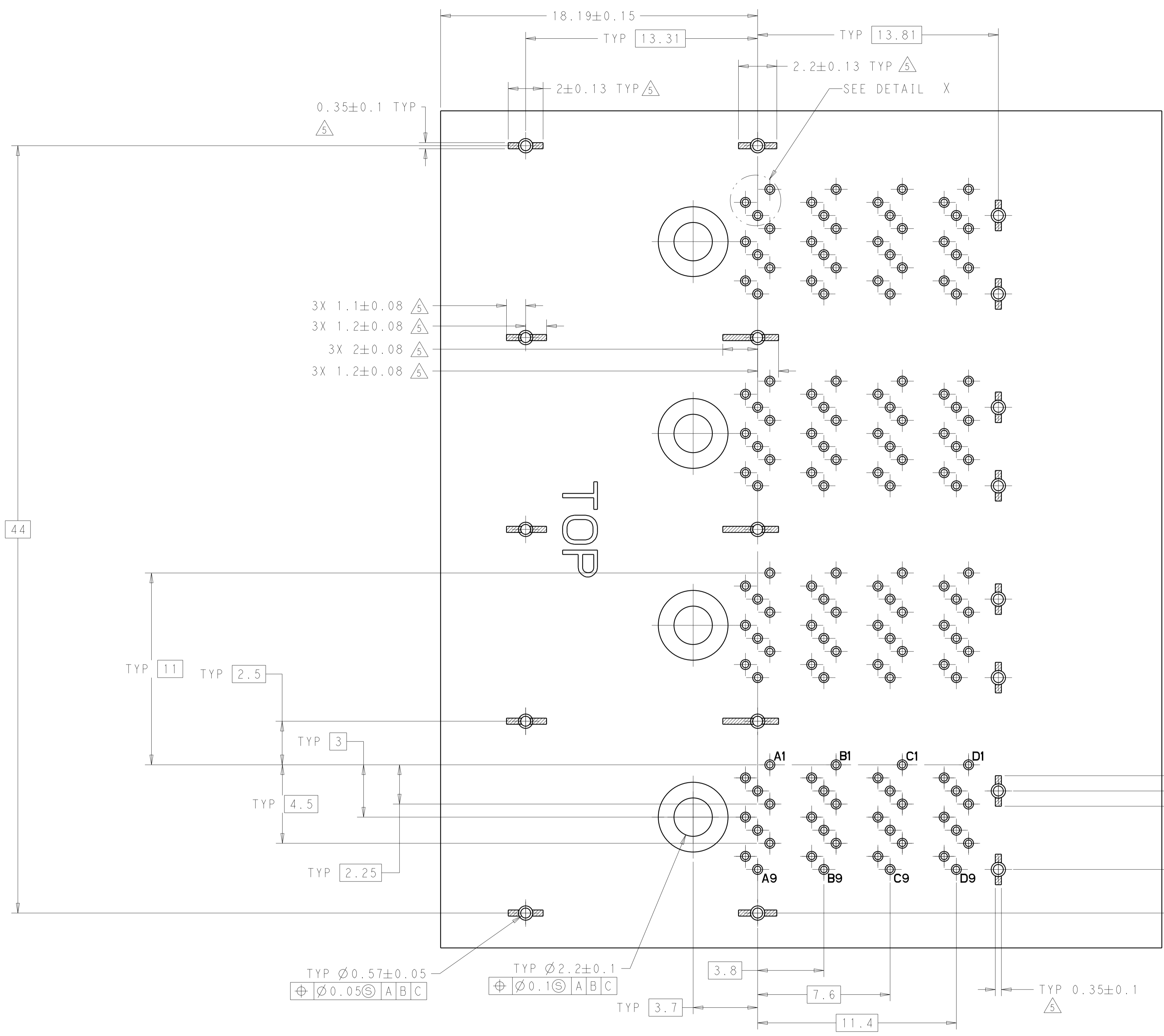
- 1. MATERIALS**
 RECEPTACLE HOUSING, LCP, BLACK, UL94V-0 RATED
 SHIELD ASSY: NICKEL SILVER COPPER ALLOY
 CONTACTS: COPPER ALLOY
 EMI SPRING: COPPER ALLOY
 THREADED NUT: BRASS
 CHICKLETS: LCP, BLACK, UL 94V-0 RATED
- 2. FINISH**
 EMI SPRING: TIN PLATE OVER NICKEL PLATE
 NON-PLATED EDGES PERMISSABLE
 THREADED NUT: NICKEL PLATE
- 3. CONTACT FINISH:** CONFORMS TO THE REQUIREMENTS OF TE PRODUCT SPECIFICATION, 108-2462. BASED ON EIA/ECA-364-1000.01A. (CONTROLLED ENVIRONMENT APPLICATIONS) ON MATING END. TIN PLATED ON PCB TAIL
- 4. THREAD LENGTH OF FASTENER = PCB THICKNESS+1.45 MAX**
- 5. RECOMMENDED TRACE KEEP OUT ZONE**



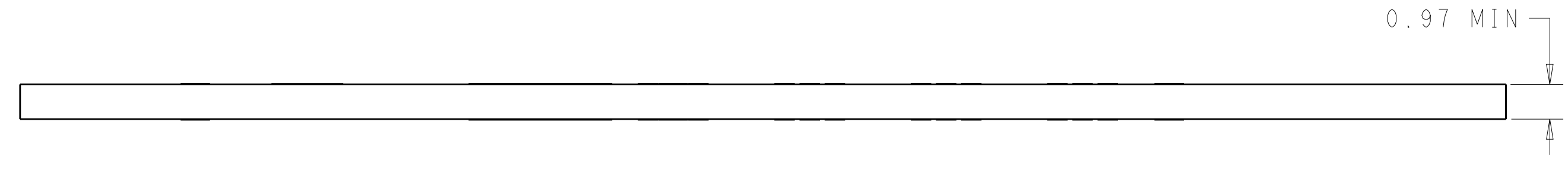
2214870-1
PART NUMBER

THIS DRAWING IS A CONTROLLED DOCUMENT.		DWN: J. SECHRIST 26MAR2012		
DIMENSIONS: mm		CHK: J. SECHRIST 26MAR2012		
TOLERANCES UNLESS OTHERWISE SPECIFIED:		APVD: -	NAME: RECEPTACLE ASSEMBLY, MINI-SAS HD, 4X	
0 PLC ±		PRODUCT SPEC: 108-2462	SIZE: A1	
1 PLC ±		APPLICATION SPEC: 114-13316	CAGE CODE: 00779	
2 PLC ±		WEIGHT: -	DRAWING NO: 2214870	
3 PLC ±		FINISH: -	SCALE: 6:1	
4 PLC ±		MATERIAL: -	SHEET: 1 OF 3	
ANGLES ±		CUSTOMER DRAWING	REV: B	

LOC	DIST	REVISIONS			
P	LTN	DESCRIPTION	DATE	DWN	APVD
-	-	SEE SHEET 1	-	-	-



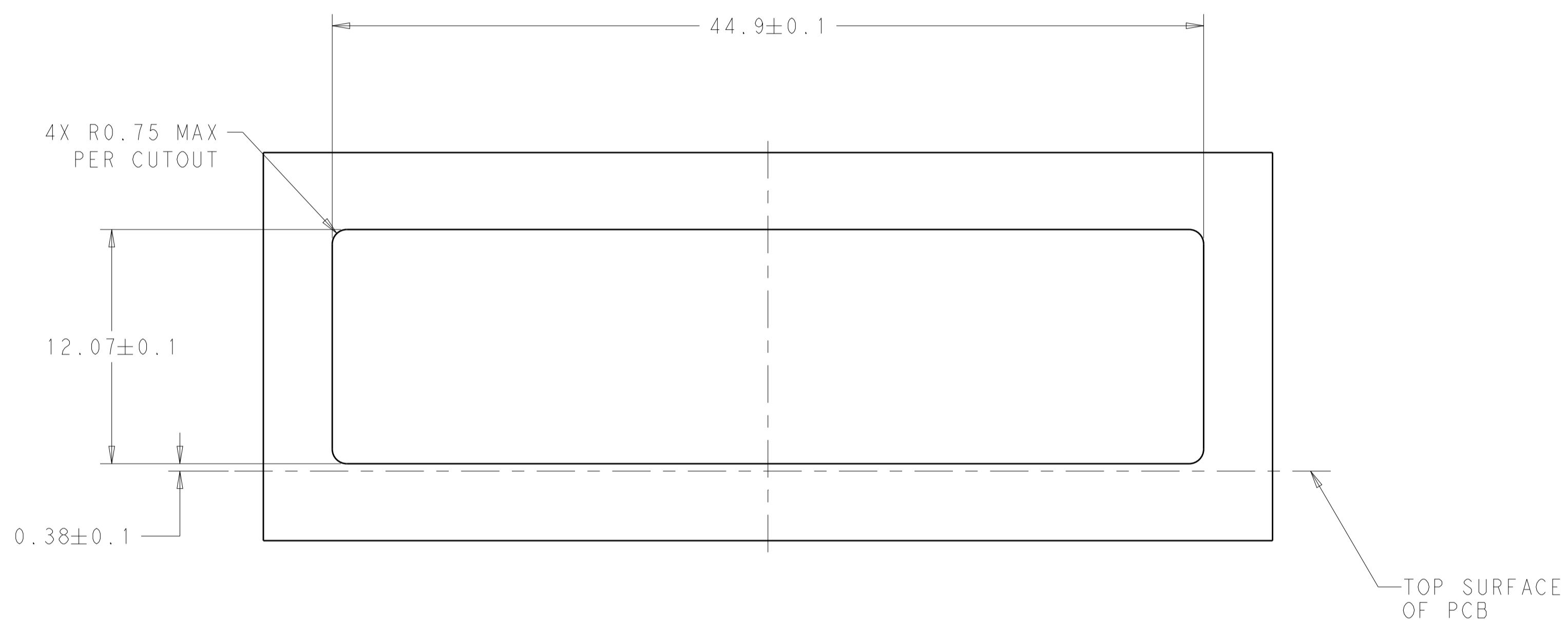
RECOMMENDED PCB LAYOUT



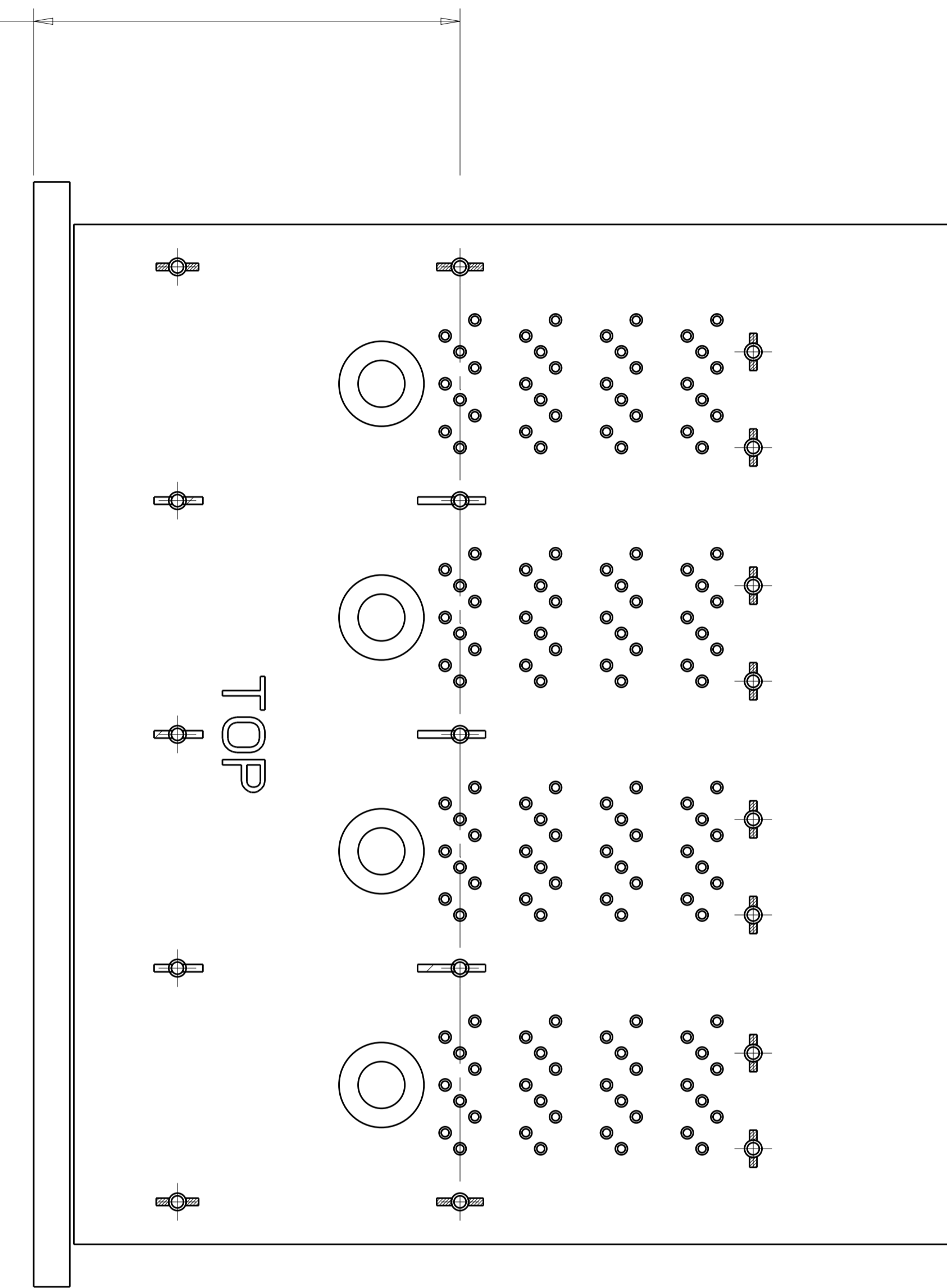
THIS DRAWING IS A CONTROLLED DOCUMENT.		DWN: J. SECHRIST 26MAR2012	TE Connectivity
DIMENSIONS: mm		CHK: J. SECHRIST 26MAR2012	
TOLERANCES UNLESS OTHERWISE SPECIFIED:		APVD: J. SECHRIST	NAME: RECEPTACLE ASSEMBLY, MINI-SAS HD, 4X
0 PLC ±	1 PLC ±	PRODUCT SPEC: 108-2462	SIZE: A1
2 PLC ±	3 PLC ±	APPLICATION SPEC: 114-13316	CAGE CODE: 00779
4 PLC ±	ANGLES ±	WEIGHT: -	DRAWING NO: C=2214870
MATERIAL: -	FINISH: -	CUSTOMER DRAWING	SCALE: 6:1
			SHEET 2 OF 3
			REV B

LOC		DIST		REVISIONS			
P	LYR	DESCRIPTION	DATE	DWN	APVD		
-	-	SEE SHEET 1	-	-	-		

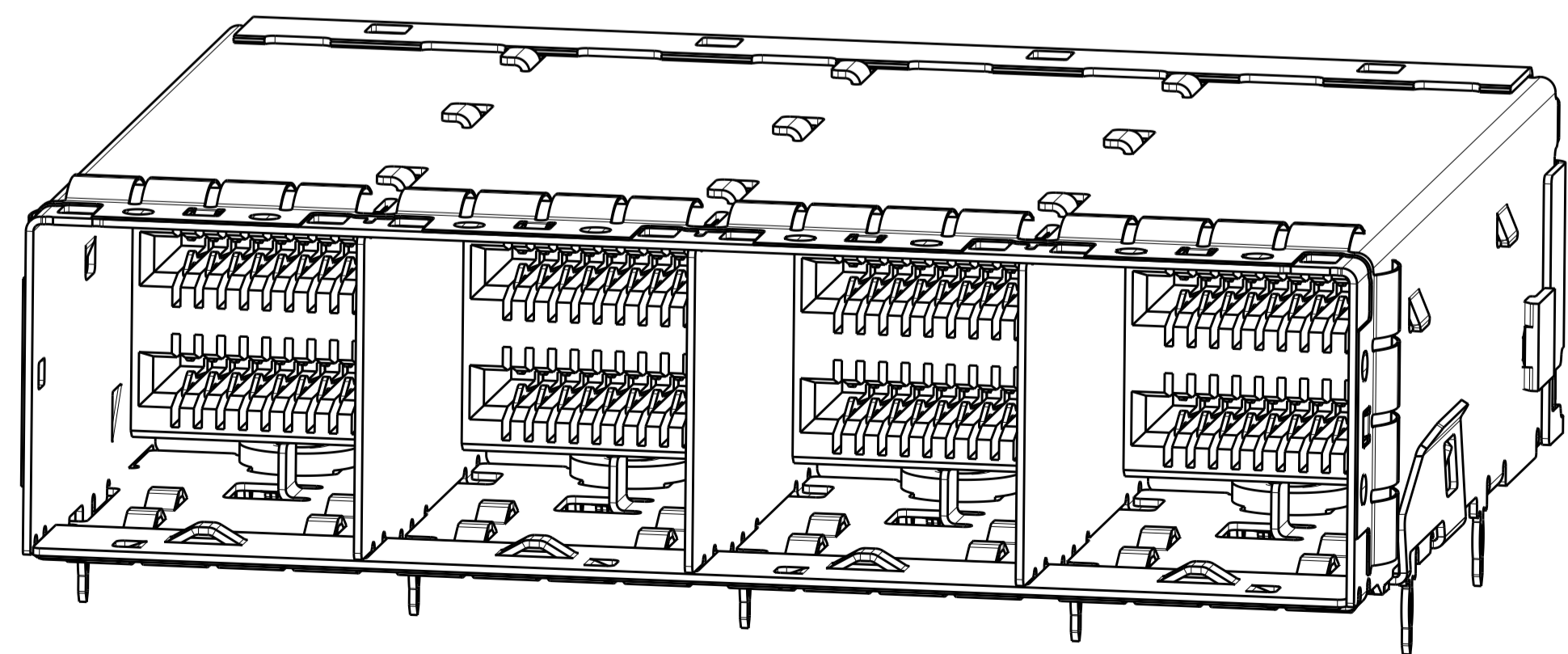
19 PCI APPLICATION
 20.08 ALL OTHER APPLICATIONS



RECOMMENDED I/O PANEL CUTOUT
 SCALE=5:1



PANEL/PCB ASSEMBLY
 SCALE=5:1



THIS DRAWING IS A CONTROLLED DOCUMENT.		DWN: J. SECHRIST 26MAR2012	
DIMENSIONS: mm		CHK: J. SECHRIST 26MAR2012	
		TOLERANCES UNLESS OTHERWISE SPECIFIED:	NAME
0 PLC ± 2 PLC ± 3 PLC ± 4 PLC ± ANGLES ± FINISH ±		APVD: -	RECEPTACLE ASSEMBLY, MINI-SAS HD, 4X
MATERIAL: -		PRODUCT SPEC: 108-2462	SIZE: A100779
		APPLICATION SPEC: 114-13316	CAGE CODE: C=2214870
		WEIGHT: -	RESTRICTED TO: -
		CUSTOMER DRAWING	SCALE: 5:1 SHEET 3 OF 3 REV B