



Chipsmall Limited consists of a professional team with an average of over 10 year of expertise in the distribution of electronic components. Based in Hongkong, we have already established firm and mutual-benefit business relationships with customers from,Europe,America and south Asia,supplying obsolete and hard-to-find components to meet their specific needs.

With the principle of “Quality Parts,Customers Priority,Honest Operation,and Considerate Service”,our business mainly focus on the distribution of electronic components. Line cards we deal with include Microchip,ALPS,ROHM,Xilinx,Pulse,ON,Everlight and Freescale. Main products comprise IC,Modules,Potentiometer,IC Socket,Relay,Connector.Our parts cover such applications as commercial,industrial, and automotives areas.

We are looking forward to setting up business relationship with you and hope to provide you with the best service and solution. Let us make a better world for our industry!



Contact us

Tel: +86-755-8981 8866 Fax: +86-755-8427 6832

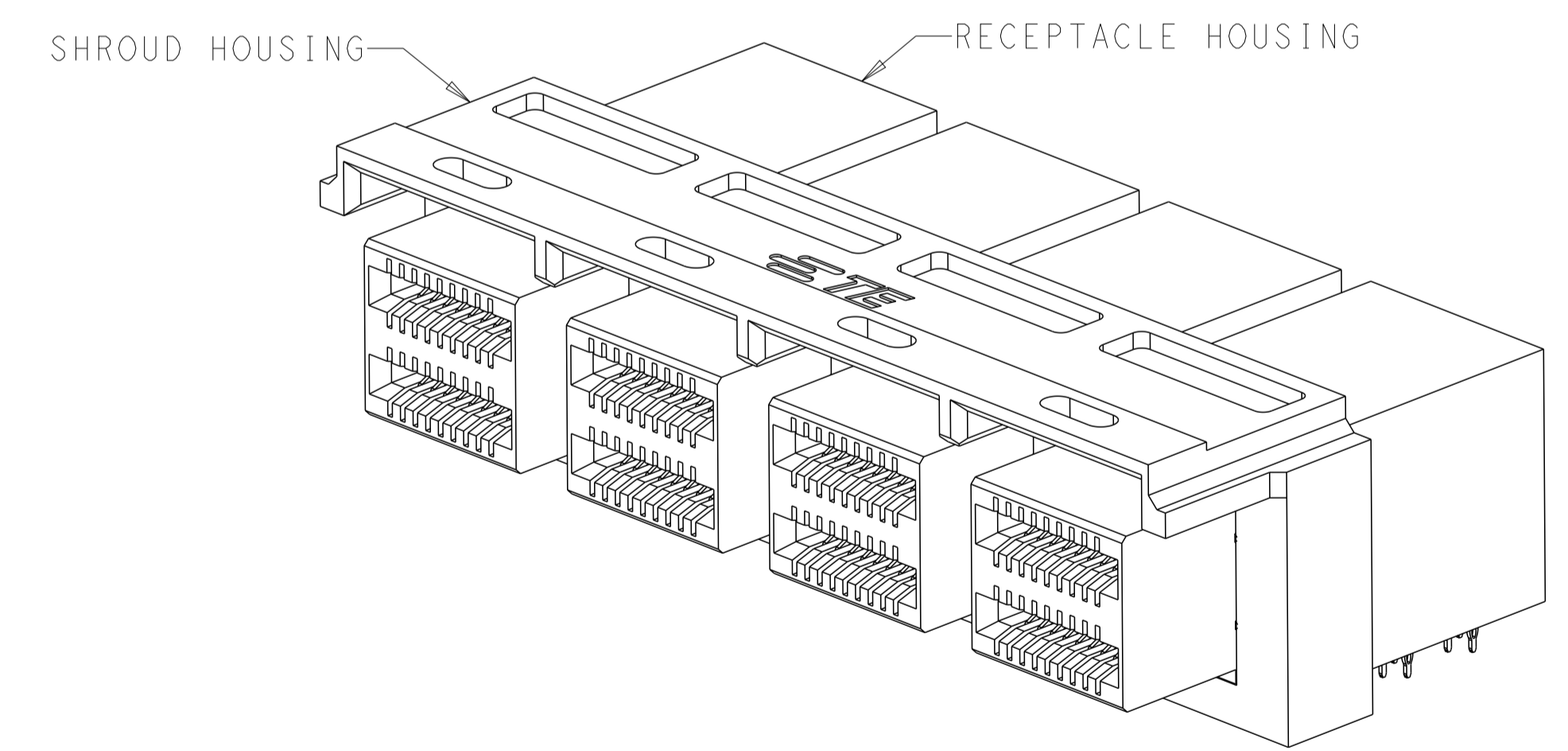
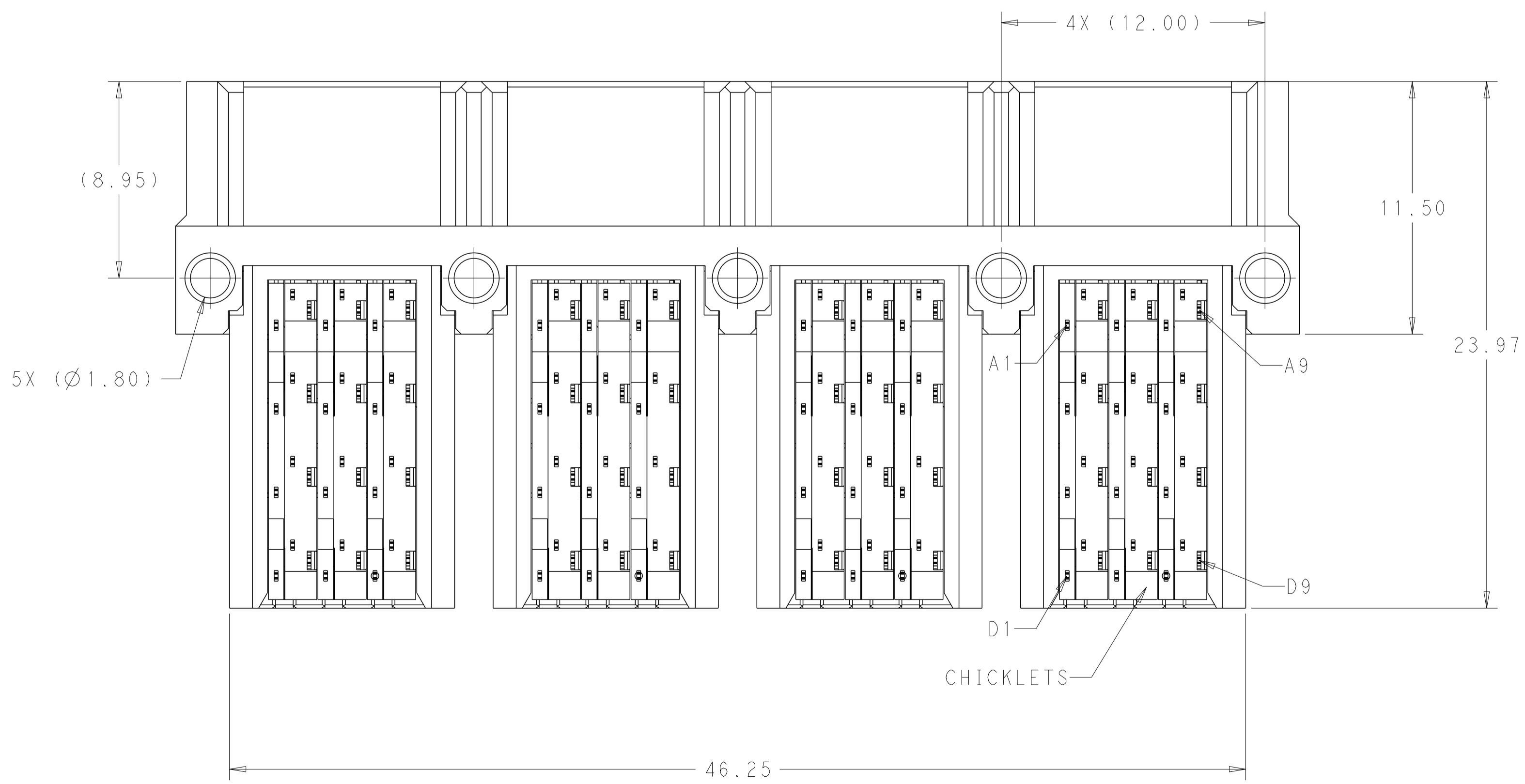
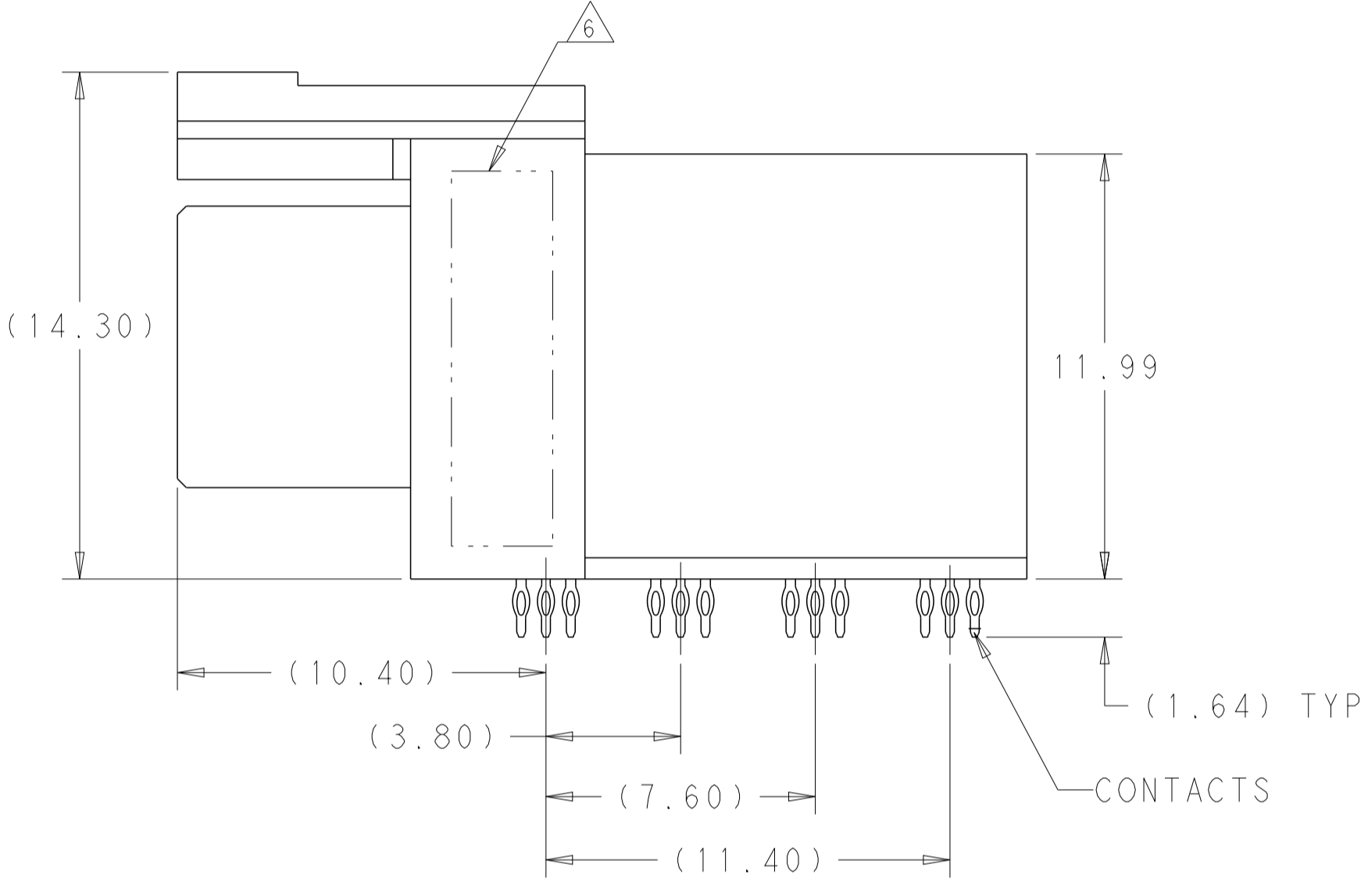
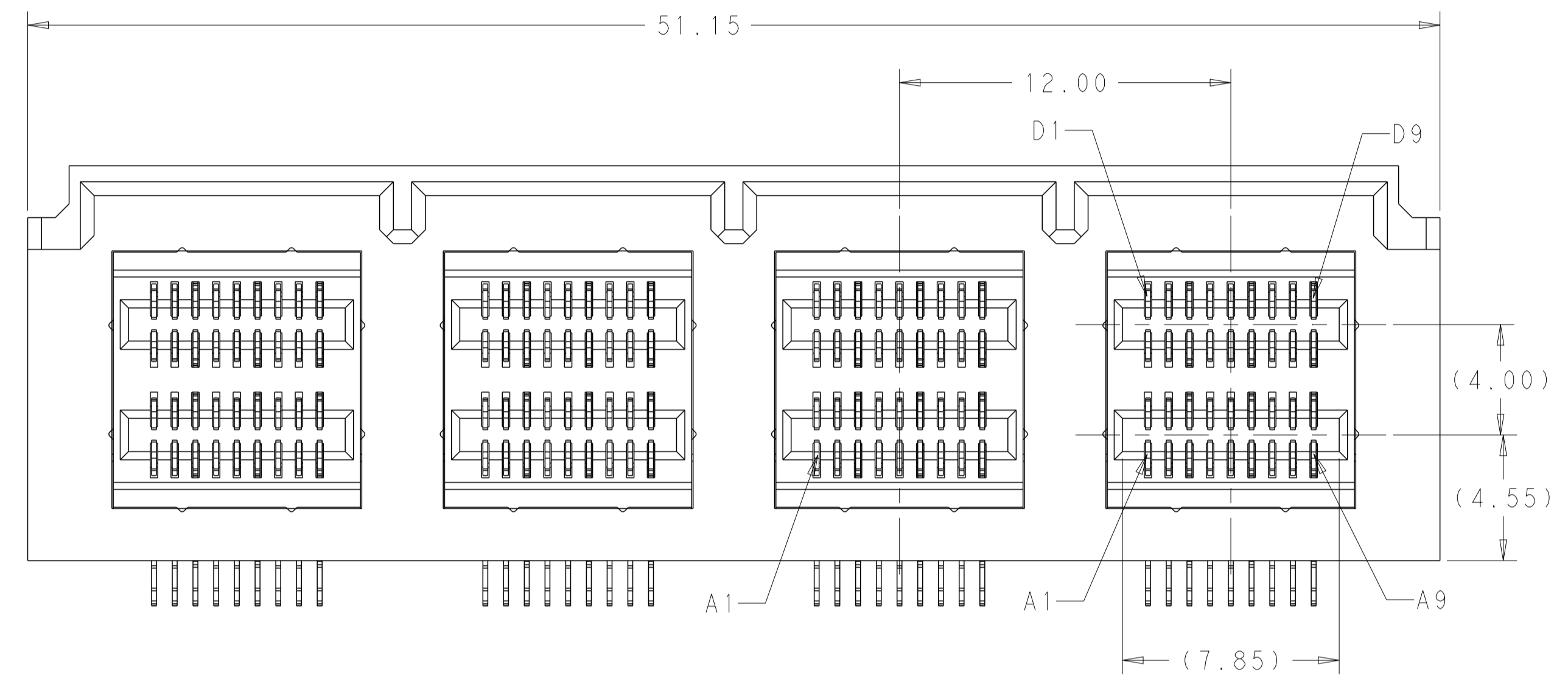
Email & Skype: info@chipsmall.com Web: www.chipsmall.com

Address: A1208, Overseas Decoration Building, #122 Zhenhua RD., Futian, Shenzhen, China



LOC	DIST	REVISIONS			
P	LTN	DESCRIPTION	DATE	DWN	APVD
GP	00	A	REVISED PER ECO-15-000199	13JAN2015	AP DG

- ⚠ MATERIALS
 HOUSINGS AND CHICKLETS: LCP, BLACK, UL94V-0 RATED
 CONTACTS: COPPER ALLOY
- ⚠ CONTACT FINISH: CONFORMS TO THE REQUIREMENTS OF TE PRODUCT SPECIFICATION, 108-32038. BASED ON EIA/ECA-364-1000.01A. (CONTROLLED ENVIRONMENT APPLICATIONS) ON MATING END. TIN PLATED ON PCB TAIL
- 3. MATES WITH TE PLUG 2227603-1
- 4. MOUNTING HARDWARE M2x1.35 SELF-THREADING SCREW
 SCREW LENGTH OF FASTENER = PCB THICKNESS + 3.0mm MAX (1.75mm MIN)
 MOUNTING HARDWARE NOT INCLUDED
- ⚠ RECOMMENDED COMPONENT KEEP OUT ZONE.
- ⚠ PART NUMBER AND DATE CODE MARKED IN APPROXIMATE AREA SHOWN ON OPPOSITE SIDE.

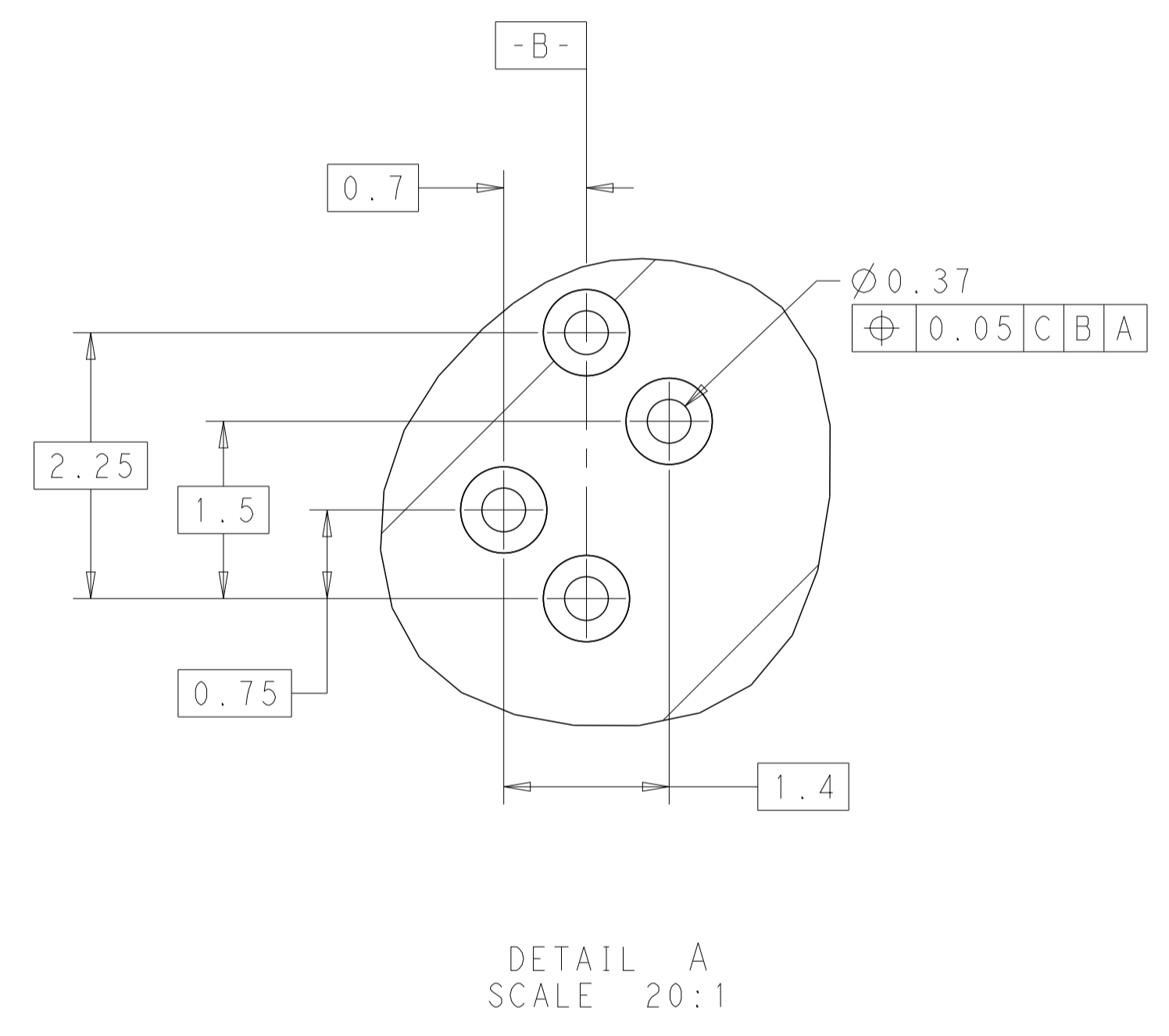
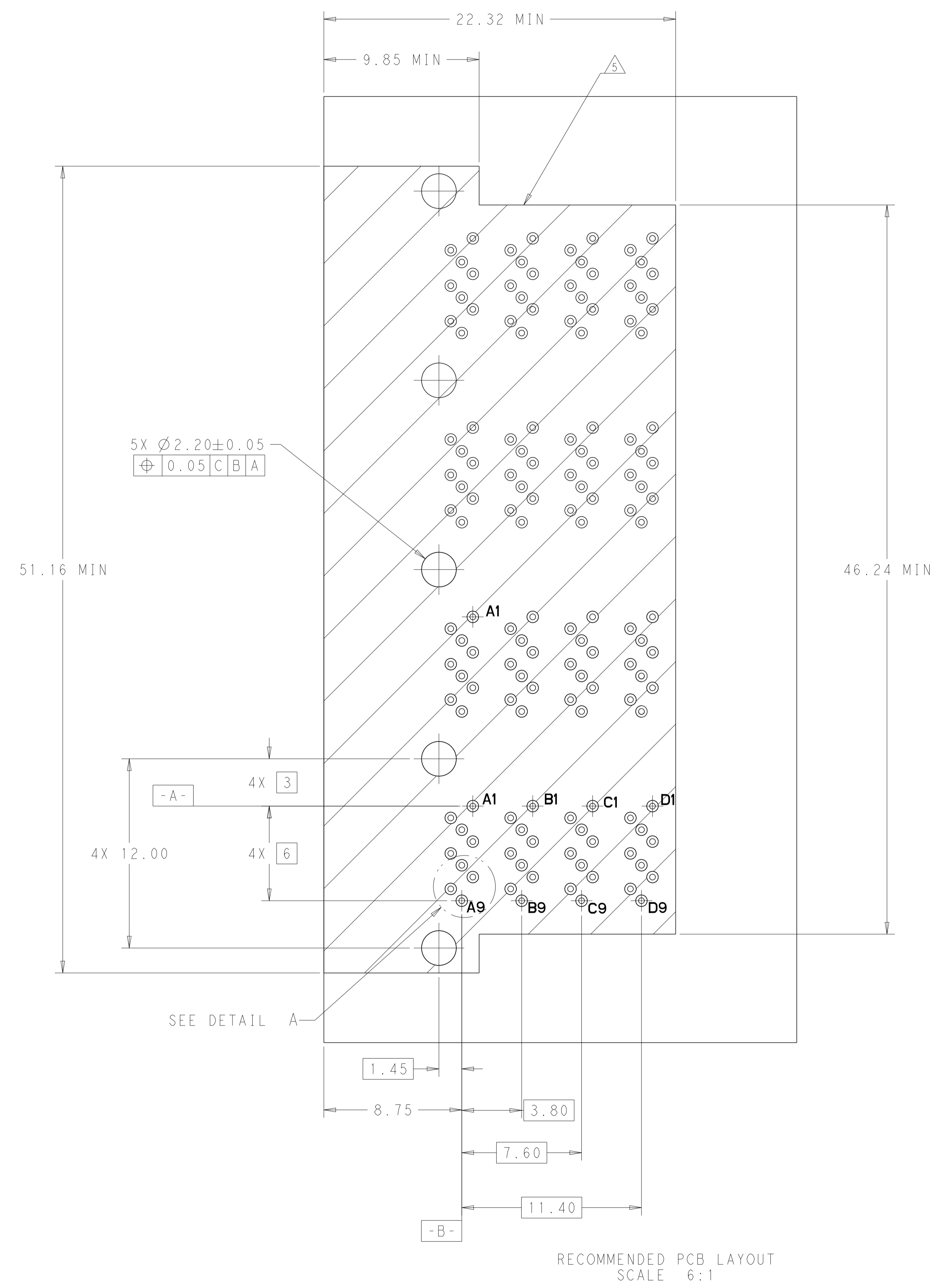


SCALE 4:1

2227582-1
 PART NUMBER

THIS DRAWING IS A CONTROLLED DOCUMENT.		DWN R. IREA	Z0DEC2012	TE Connectivity
DIMENSIONS:		CHK R. HENRY	Z0DEC2012	
mm	0 PLC ±	APVD		NAME
	1 PLC ±0.13	PRODUCT SPEC		RECEPTACLE ASSEMBLY,
	2 PLC ±	APPLICATION SPEC		1X4, RIGHT ANGLE,
	3 PLC ±	SIZE		INTERNAL MINI-SAS HD
	4 PLC ±	CAGE CODE		RESTRICTED TO
	ANGLES ±	DRAWING NO		A100779
MATERIAL	FINISH	WEIGHT		©=2227582
⚠	⚠	CUSTOMER DRAWING		SCALE 6:1 SHEET 1 OF 2 REV A

LOC	DIST	REVISIONS			
P	LTN	DESCRIPTION	DATE	DWN	APVD
-	-	SEE SHEET 1	-	-	-



THIS DRAWING IS A CONTROLLED DOCUMENT.		DWN R. IREA	Z0DEC2012	TE Connectivity		
DIMENSIONS:		CHK R. HENRY	Z0DEC2012			
mm	0 PLC ±	APVD		NAME		
	1 PLC ±	PRODUCT SPEC		RECEPTACLE ASSEMBLY,		
	2 PLC ±0.13	APPLICATION SPEC		1X4, RIGHT ANGLE,		
	3 PLC ±	MATERIAL		INTERNAL MINI-SAS HD		
	4 PLC ±	FINISH				
ANGLES	±	SIZE	CAGE CODE	DRAWING NO	RESTRICTED TO	
MATERIAL		114-32101	A100779	C=2227582		
		WEIGHT				
		CUSTOMER DRAWING		SCALE 6:1	SHEET 2 OF 2	REV A