



Chipsmall Limited consists of a professional team with an average of over 10 year of expertise in the distribution of electronic components. Based in Hongkong, we have already established firm and mutual-benefit business relationships with customers from,Europe,America and south Asia,supplying obsolete and hard-to-find components to meet their specific needs.

With the principle of “Quality Parts,Customers Priority,Honest Operation,and Considerate Service”,our business mainly focus on the distribution of electronic components. Line cards we deal with include Microchip,ALPS,ROHM,Xilinx,Pulse,ON,Everlight and Freescale. Main products comprise IC,Modules,Potentiometer,IC Socket,Relay,Connector.Our parts cover such applications as commercial,industrial, and automotives areas.

We are looking forward to setting up business relationship with you and hope to provide you with the best service and solution. Let us make a better world for our industry!



Contact us

Tel: +86-755-8981 8866 Fax: +86-755-8427 6832

Email & Skype: info@chipsmall.com Web: www.chipsmall.com

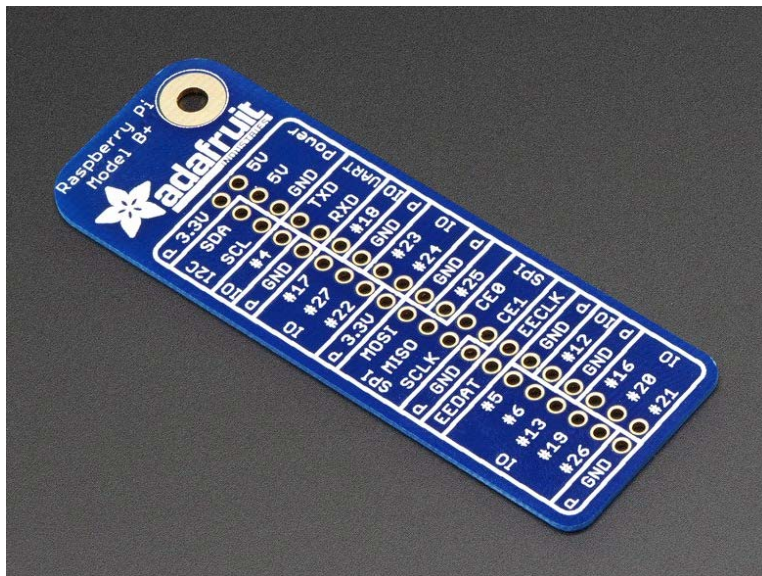
Address: A1208, Overseas Decoration Building, #122 Zhenhua RD., Futian, Shenzhen, China





Adafruit GPIO Reference Card for Raspberry Pi Model B+/Pi 2/Pi 3

PRODUCT ID: 2263



. Description

This board makes connecting wires to the Raspberry Pi GPIO incredibly easy. It's a reference board that makes it really easy to see if you're connecting your wires correctly. We liked the Pi GPIO Reference Board from Low Voltage Labs so much that we worked with them to license their design! We made some changes to the Low Voltage version - including grouping the pins into categories like I2C, IO, UART, SPI, and power.

It's only 0.8mm thick, idiot proof (you can't put it on backwards...), and makes a great keychain for the Pi enthusiast. Simply slide it onto the 2x20 GPIO header, then you can plug in premium jumper wires with female sockets on top as shown.

This version works with the Raspberry Pi Model B+ / Pi 2 / Pi 3. **It does not work with the Raspberry Pi Model B but we do have a B version as well!**

. Technical Details

- Dimensions: 66mm x 23mm x 0.8mm / 2.6" x 0.9" x 0.03"
- Weight: 2.4g

