



Chipsmall Limited consists of a professional team with an average of over 10 year of expertise in the distribution of electronic components. Based in Hongkong, we have already established firm and mutual-benefit business relationships with customers from,Europe,America and south Asia,supplying obsolete and hard-to-find components to meet their specific needs.

With the principle of “Quality Parts,Customers Priority,Honest Operation,and Considerate Service”,our business mainly focus on the distribution of electronic components. Line cards we deal with include Microchip,ALPS,ROHM,Xilinx,Pulse,ON,Everlight and Freescale. Main products comprise IC,Modules,Potentiometer,IC Socket,Relay,Connector.Our parts cover such applications as commercial,industrial, and automotives areas.

We are looking forward to setting up business relationship with you and hope to provide you with the best service and solution. Let us make a better world for our industry!



Contact us

Tel: +86-755-8981 8866 Fax: +86-755-8427 6832

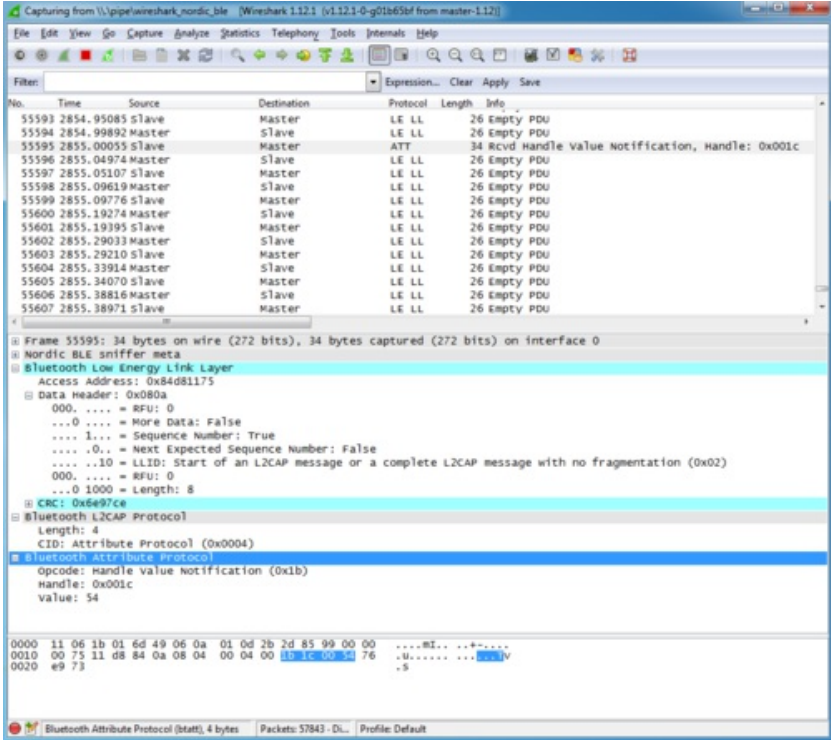
Email & Skype: info@chipsmall.com Web: www.chipsmall.com

Address: A1208, Overseas Decoration Building, #122 Zhenhua RD., Futian, Shenzhen, China



Introducing the Adafruit Bluefruit LE Sniffer

Created by Kevin Townsend



Last updated on 2017-04-06 03:33:09 PM UTC

Guide Contents

Guide Contents	2
Introduction	4
v3.0: CP2104 Driver Requirements (Black Boards)	4
v1.0: FTDI Driver Requirements (Blue Boards)	4
Using the Sniffer	5
Nordic's nRF Sniffer Utility (Windows only)	5
Python API (Cross-Platform, no Registration)	5
Nordic nRF Sniffer	6
Getting the Sniffer Utility	6
Getting Wireshark	6
Running the Sniffer	6
Select the Sniffer Target	6
Working with Wireshark	7
Capturing Exchanges Between Two Devices	8
Scan Response Packets	9
Connection Request	9
Write Request	10
Regular Data Requests	10
Notify Event Data	11
Closing Wireshark and nRF-Sniffer	13
Moving Forward	13
OS X Support	14
Python API	15
Requirements	15
Download the API	15
Using the sniffer.py Wrapper	16
Linux	16
OS X	16
Windows	16
Scanning for Devices	16
Locating the Log File	17
Analyze Data in Wireshark	17
FAQs	18

Downloads	20
Files	20
Schematic	20

Introduction

Using a special firmware image provided by Nordic Semiconductors and the open source network analysis tool Wireshark, the [Bluefruit LE Sniffer](http://adafruit.it/edE) (<http://adafruit.it/edE>) can be used as a low cost Bluetooth Low Energy sniffer.

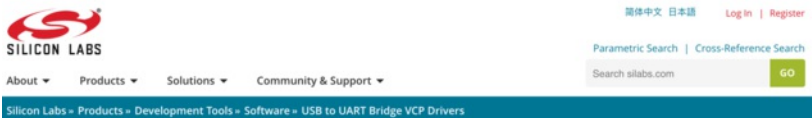
NOTE: This product can only be used to sniff Bluetooth Low Energy devices. It will not work with classic Bluetooth devices or transactions.



Since nRF-Sniffer is a passive solution that is simply scanning packets over the air, there is the possibility of missing packets using this tool (or any other passive sniffing solution). In order to capture as many packets as possible, be sure to run the sniffer on a USB bus that isn't busy and avoid running it in a virtual machine since this can introduce significant latency over USB.

v3.0: CP2104 Driver Requirements (Black Boards)

The latest version of the sniffer uses the CP2104 USB to Serial bridge and drops the SWD connector, allowing us to sell the boards at a significant discount compared to version 1.0. To use the v3.0 boards, though, you will need to install the [CP2104 VCP driver from Silicon Labs](http://adafruit.it/vrf) (<http://adafruit.it/vrf>):



CP210x USB to UART Bridge VCP Drivers

The CP210x USB to UART Bridge Virtual COM Port (VCP) drivers are required for device operation as a Virtual COM Port to facilitate host communication with CP210x products. These devices can also interface to a host using the [direct access driver](#). These drivers are static examples detailed in application note 197: The Serial Communications Guide for the CP210x, download an example below:

AN197: The Serial Communications Guide for the CP210x

Download Software

The CP210x Manufacturing DLL and Runtime DLL have been updated and must be used with v6.0 and later of the CP210x Windows VCP Driver. Application Note Software downloads affected are AN1445W.zip, AN2055W.zip and AN2235W.zip. If you are using a 5.x driver and need support you can download archived Application Note Software.

[Legacy OS software and driver package download links and support information](#)

v1.0: FTDI Driver Requirements (Blue Boards)

Before you can start talking to the sniffer, you'll need to install a standard FTDI driver for the FT231x located on the device.

Find the appropriate FTDI VCP installer on the [FTDI Driver Download Page](http://adafruit.it/aJv) (<http://adafruit.it/aJv>), install it on you system, and then insert the sniffer in any USB port on your system.

Nordic nRF Sniffer

The following guide will walk you through downloading, installing and using the official nRF Sniffer application from Nordic Semiconductors.

Getting the Sniffer Utility

The Bluefruit LE Sniffer comes pre-flashed with the special sniffer firmware image, but you'll need to go to Nordic's website and download the **nRF-Sniffer** package to capture the data on Windows and push it out into Wireshark for packet by packet analysis.

Go to the [nRF Sniffer product page \(http://adafru.it/ezV\)](http://adafru.it/ezV) and click the 'downloads' tab, then download the latest version of the utility, as shown below, and unzip it:

SOFTWARE		
Code	Name	Version
nRF-Sniffer	nRF Sniffer (First Production release) - PC Software and Device Firmware that allow you to see all Bluetooth low energy packets on the air between two devices.	1.0.1

Inside this downloaded file you'll find the sniffer executable, which will open up the command-line tool when you click on it.

Getting Wireshark

In order to use the sniffer utility you'll also need to [download Wireshark \(http://adafru.it/ecp\)](http://adafru.it/ecp), preferably version 1.12.1 (the same one used in this tutorial).

Simply select the 32-bit or 64-bit Windows Installer and install it on your machine using the default settings:

Make sure you are using a version greater than or equal to 1.12.1, but less than the most recent 2.x release family. The plugin is written with 1.12.x as a target.



Make sure that you install the libpcap library when installing Wireshark. Any log files captured by the python library are in libpcap format, and will require this library to work.

Running the Sniffer

Now that everything is installed, you can get started using the Bluefruit LE Sniffer and the sniffer bridge SW that pushes any sniffed data out into Wireshark ...

Select the Sniffer Target

The nRF-Sniffer can only sniff one device at a time, so the first step is getting the sniffer running and then selecting the device that you want to debug.

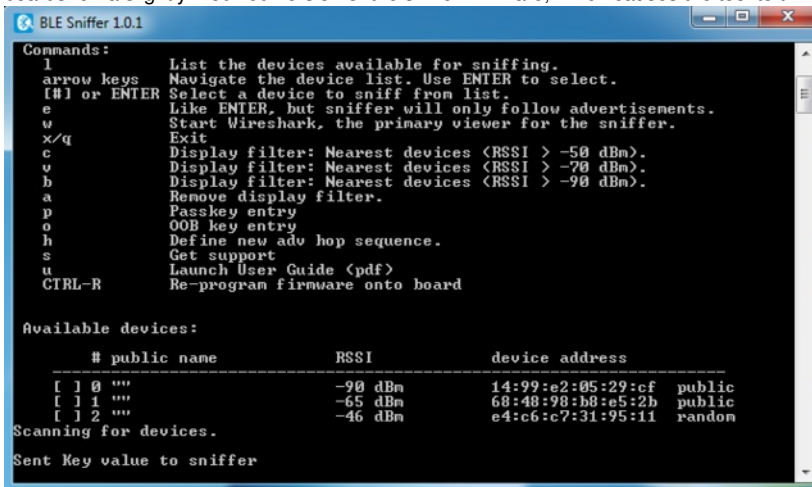
Start nRF-Sniffer by running the ble-sniffer_win executable (for example: ble-sniffer_win_1.0.1_1111_Sniffer.exe).

This will try to detect the device running the nRF-Sniffer firmware over a UART COM port.

If the board isn't detected right away type 'f' to erase any previous com port settings, or try removing and then re-inserting the sniffer while the console application is running.

Once the sniffer is found, you should see a list of all BLE devices that were detected in listening range:

If you see a warning in the application about your firmware being out of date and requesting to update it, IGNORE THE WARNING. The Adafruit boards run a slightly modified version of the sniffer firmware, which causes the tool to think it is out of date.

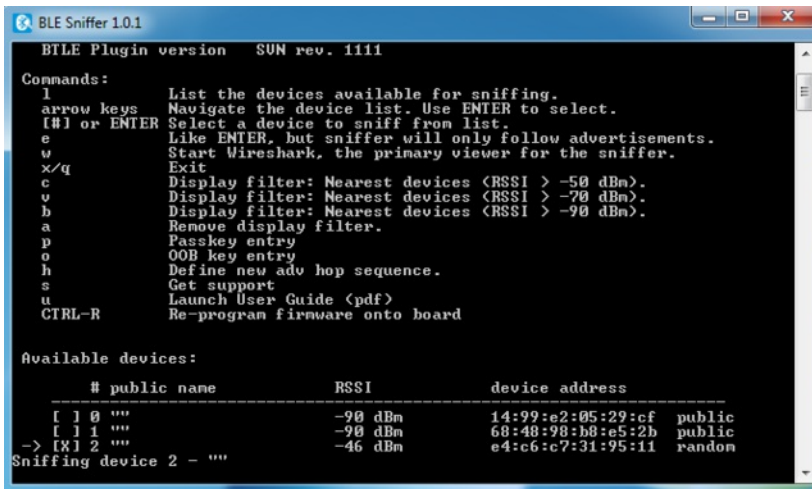


```
BLE Sniffer 1.0.1
Commands:
l      List the devices available for sniffing.
arrow keys  Navigate the device list. Use ENTER to select.
[#] or ENTER  Select a device to sniff from list.
e      Like ENTER, but sniffer will only follow advertisements.
w      Start Wireshark, the primary viewer for the sniffer.
x/q    Exit
c      Display filter: Nearest devices <RSSI > -50 dBm.
v      Display filter: Nearest devices <RSSI > -70 dBm.
b      Display filter: Nearest devices <RSSI > -90 dBm.
a      Remove display filter.
p      Passkey entry
o      OOB key entry
h      Define new adv hop sequence.
s      Get support
u      Launch User Guide <pdf>
CTRL-R  Re-program firmware onto board

Available devices:
-----
# public name      RSSI      device address
[ ] 0 ""          -90 dBm   14:99:e2:05:29:cf public
[ ] 1 ""          -65 dBm   68:48:98:b8:e5:2b public
[ ] 2 ""          -46 dBm   e4:c6:c7:31:95:11 random
Scanning for devices.
Sent Key value to sniffer
```

In this particular case, we'll select device number 2, which is BLEFriend running the standard UART firmware.

Type the device number you want to sniff (in this case '2'), and you should see the device highlighted in the list, similar to the image below:



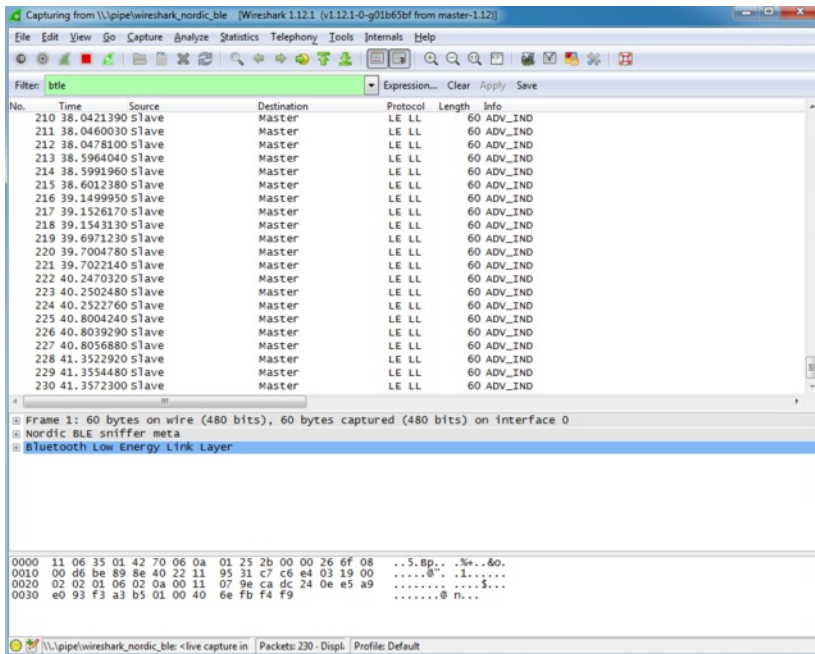
```
BLE Sniffer 1.0.1
BTLE Plugin version SUN rev. 1111
Commands:
l      List the devices available for sniffing.
arrow keys  Navigate the device list. Use ENTER to select.
[#] or ENTER  Select a device to sniff from list.
e      Like ENTER, but sniffer will only follow advertisements.
w      Start Wireshark, the primary viewer for the sniffer.
x/q    Exit
c      Display filter: Nearest devices <RSSI > -50 dBm.
v      Display filter: Nearest devices <RSSI > -70 dBm.
b      Display filter: Nearest devices <RSSI > -90 dBm.
a      Remove display filter.
p      Passkey entry
o      OOB key entry
h      Define new adv hop sequence.
s      Get support
u      Launch User Guide <pdf>
CTRL-R  Re-program firmware onto board

Available devices:
-----
# public name      RSSI      device address
[ ] 0 ""          -90 dBm   14:99:e2:05:29:cf public
[ ] 1 ""          -90 dBm   68:48:98:b8:e5:2b public
-> [X] 2 ""        -46 dBm   e4:c6:c7:31:95:11 random
Sniffing device 2 - ""
```

At this point you can type 'w', which will try to open wireshark and start pushing data out via a dedicate pipe created by the nRF-Sniffer utility.

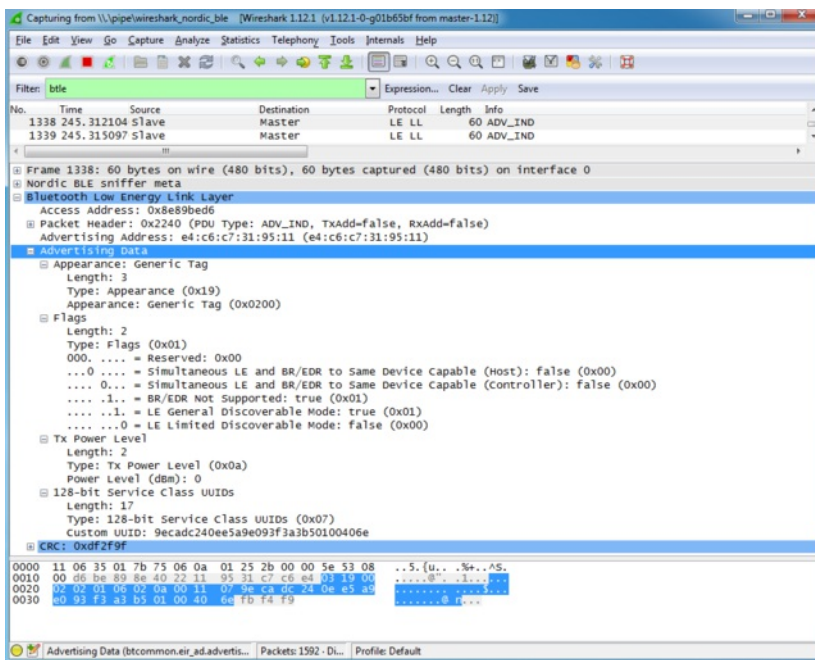
Working with Wireshark

Once Wireshark has loaded, you should see the advertising packets streaming out from the selected BLE device at a regular intercal, as shown in the image below:



One of the key benefits of Wireshark as an analysis tool is that it understands the raw packet formats and provides human-readable displays of the raw packet data.

The main way to interact with BLE data packets is to select one of the packets in the main window, and then expand the **Bluetooth Low Energy Link Layer** treeview item in the middle of the UI, as shown below:



Clicking on the **Advertising Data** entry in the treeview will highlight the relevant section of the raw payload at the bottom of the screen, but also provides human readable information about the payload that can save you a lot of time trying to debug or reverse engineer a device.

We can see, for example, that the device is advertising itself as a Bluetooth Low Energy only device ('BR/EDR Not Supported'), with a TX Power Level of 0dBm, and a single service is being advertised using a 128-bit UUID (the UART service in this case).

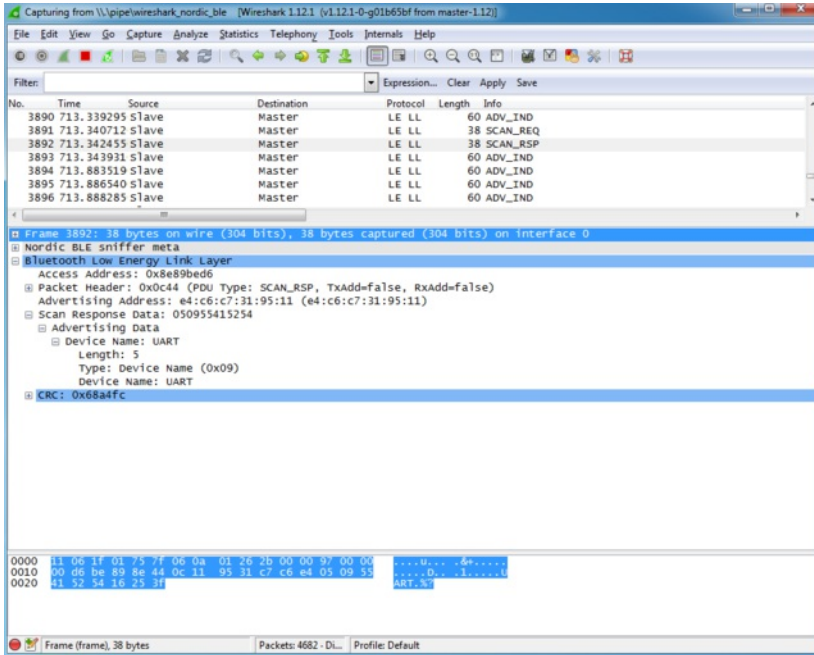
Capturing Exchanges Between Two Devices

If you wish to sniff data being exchanged between two BLE devices, you will need to establish a connection between the original device we selected above and a second BLE device (such as an iPhone or an Android tablet with BLE capabilities).

The nRF-Sniffer firmware is capable of listening to all of the exchanges that happen between these devices, but cannot connect with a BLE peripheral or central device itself (it's a purely passive device).

Scan Response Packets

If you open up **nRF UART** on an Android or iOS device, and click the **Connect** button, the phone or tablet will start scanning for devices in range. One of the side effects of this scanning process is that you may spot a new packet in Wireshark on an irregular basis, the 'SCAN_REQ' and 'SCAN_RSP' packets:



The **Scan Response** is an optional second advertising packet that some Bluetooth Low Energy peripherals use to provide additional information during the advertising phase. The normal mandatory advertising packet is limited to 31 bytes, so the Bluetooth SIG includes the possibility to request a second advertising payload via the **Scan Request**.

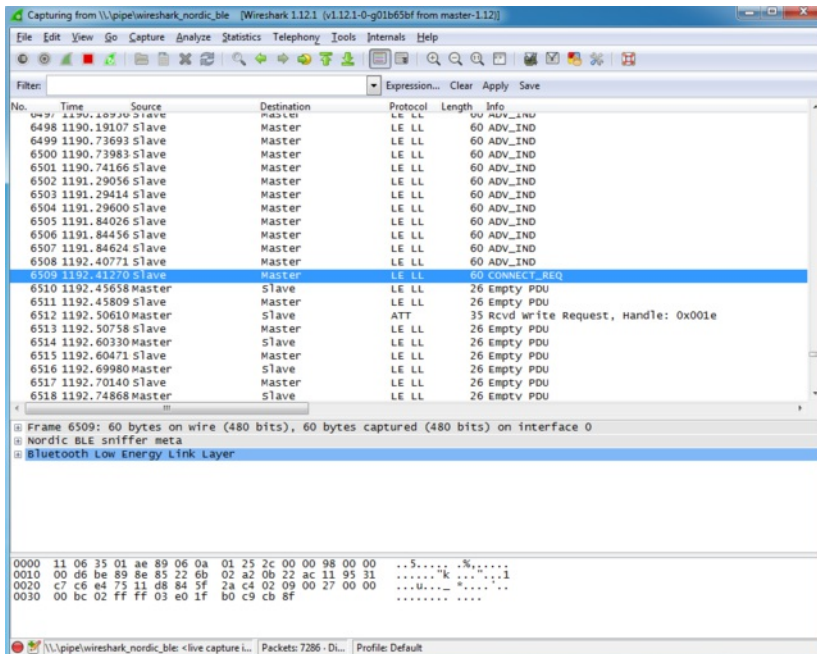
You can see both of these transactions in the image above, and the **Device Name** that is included in the Scan Response payload (since the 128-bit UART Service UUID takes up most of the free space in the main advertising packet).

For more information on Scan Responses and the advertising process in Bluetooth Low Energy see our [Introduction to Bluetooth Low Energy Guide](http://adafruit.it/iCo) (<http://adafruit.it/iCo>).

Connection Request

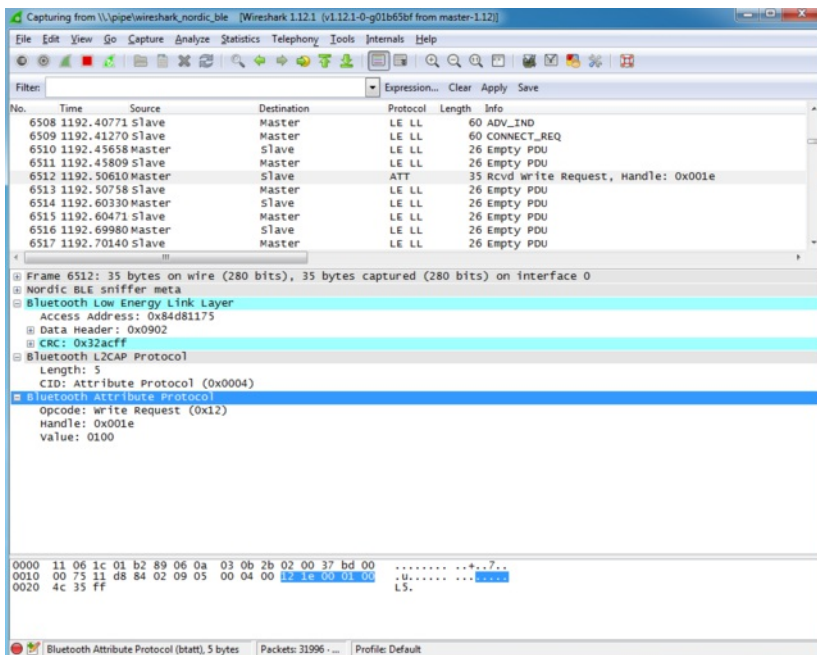
Once we click on the **UART** device in **nRF UART**, the two devices will attempt to connect to each other by means of a **Connection Request**, which is initiated by the central device (the phone or tablet).

We can see this **CONNECT_REQ** in the timeline in the image below:



Write Request

Once the connection has been established, we can see that the **RF UART** application tries to write data to the BLEFriend via a **Write Request** to handle '0x001E' (which is the location of an entry in the attribute table since everything in BLE is made up of attributes).



What this write request is trying to do is enable the 'notify' bit on the **UART service's TX characteristic** (<http://adafruit.it/k7b>) (0x001E is the handle for the CCCD or **Client Characteristic Configuration Descriptor** (<http://adafruit.it/ecl>)). This bit enables an 'interrupt' of sorts to tell the BLEFriend that we want to be alerted every time there is new data available on the characteristic that transmits data from the BLEFriend to the phone or tablet.

Regular Data Requests

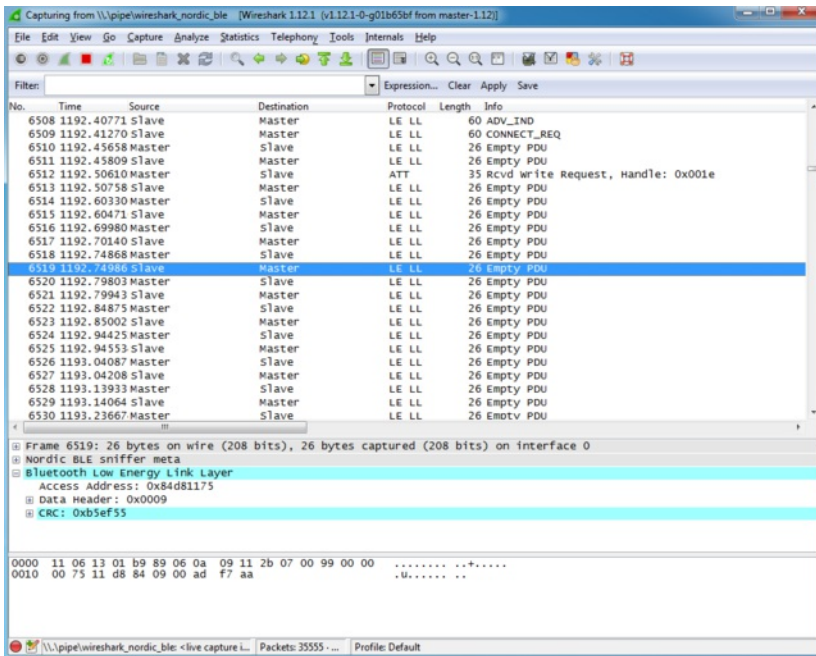
At this point you will start to see a lot of regular **Empty PDU** requests. This is part of the way that Bluetooth Low Energy works.

Similar to USB, all BLE transaction are initiated by the bus 'Master', which is the central device (the tablet or phone).

In order to receive data from the bus slave (the peripheral device, or the BLEFriend in this particular case) the central device sends a 'ping' of sorts

to the peripheral at a delay known as the 'connection interval' (not to be confused with the one-time connection highlighted earlier in this tutorial).

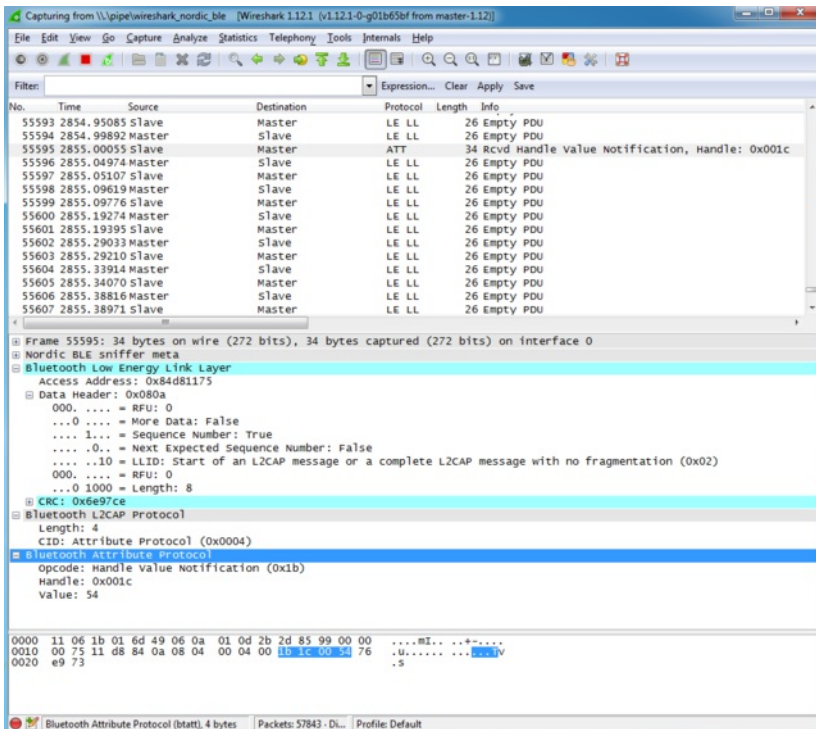
We can see pairs of transaction that happen at a reasonably consistent interval, but no data is exchanged since the BLEFriend (the peripheral) is saying 'sorry, I don't have any data for you':



Notify Event Data

To see an actual data transaction, we simply need to enter some text in our terminal emulator SW which will cause the BLEFriend to send the data to nRF UART using the UART service.

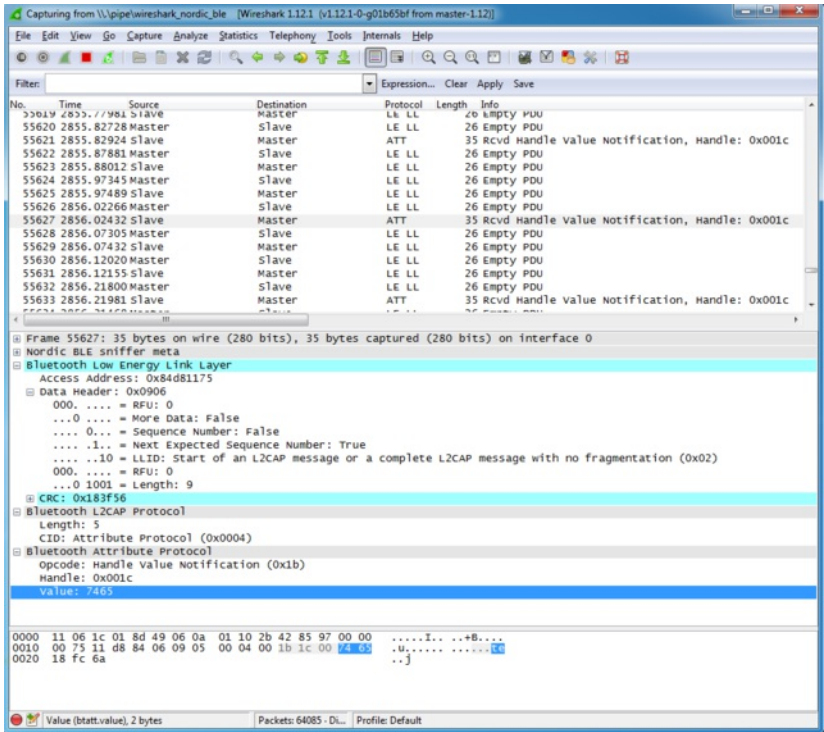
Entering the string 'This is a test' in the terminal emulator, we can see the first packet being sent below (only the 'T' character is transmitted because the packets are sent out faster than we enter the characters into the terminal emulator):



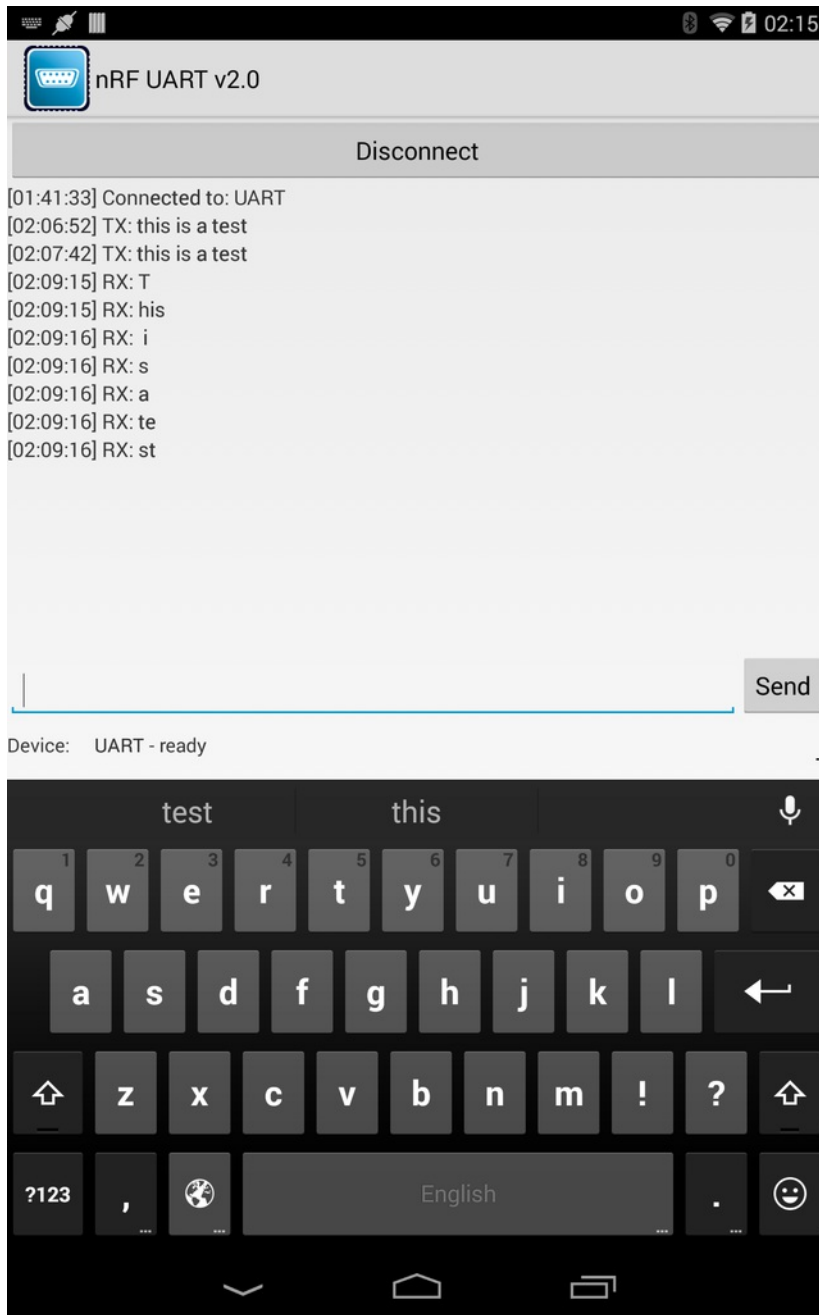
What this 4-byte 'Bluetooth Attribute Protocol' packet is actually saying is that attribute 0x001C (the location of the TX characteristic in the attribute

table) has been updated, and the new value is '0x54', which corresponds to the letter 'T'.

Scrolling a bit further down we can see an example where more than one character was sent in a single transaction ('te' in this case):



The results of this transaction in the nRF UART application can be seen below:



Closing Wireshark and nRF-Sniffer

When you're done debugging, you can save the session to a file for later analysis, or just close Wireshark right away and then close the nRF-Sniffer console window to end the debug session.

Moving Forward

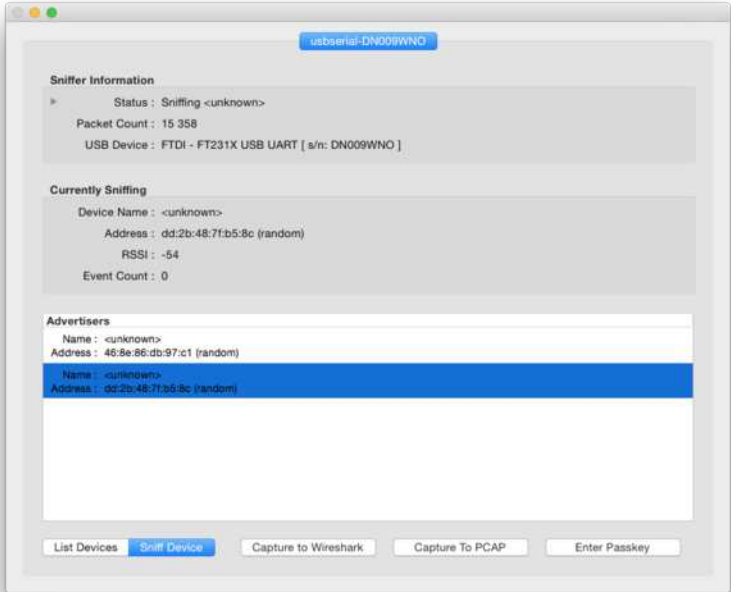
A sniffer is an incredibly powerful and valuable tool debugging your own hardware, reverse engineering existing BLE peripherals, or just to learn the ins and outs of how Bluetooth Low Energy actually works on the a packet by packet level.

You won't learn everything there is to know about BLE in a day, but a good book on BLE, a copy of the Bluetooth 4.1 Core Specification and a sniffer will go a long way to teaching you most of the important things there is to know about BLE in the real world.

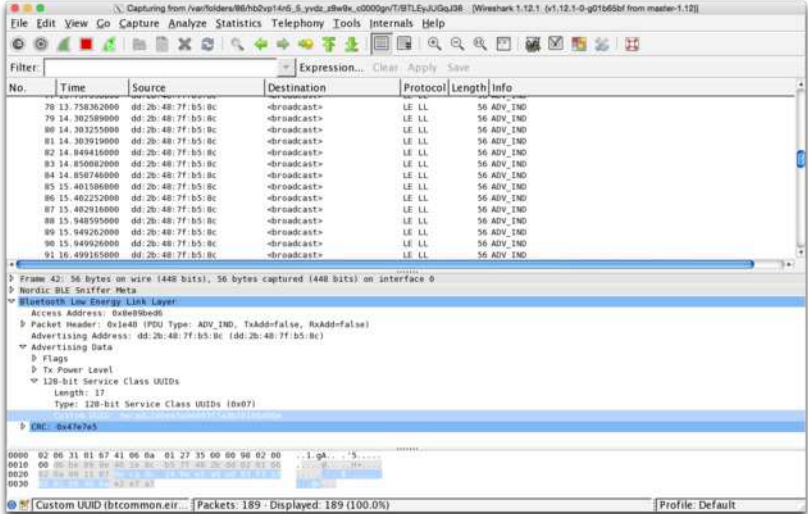
OS X Support

If you are running OS X 10.9 or higher, you can also use the sniffer on OS X using the [mrf-ble-sniffer-osx](http://adafru.it/ft6) (<http://adafru.it/ft6>) package from Roland King. (Make sure you have the latest version, as of 20 June 2015, which is now compatible with the FTDI chip used on the Adafruit board.)

Setup instructions are available on the [wiki page](http://adafru.it/ft7) (<http://adafru.it/ft7>) for the project.



Please note that there can be a long delay (30-60 seconds) before Wireshark shows up using the tool, due to the X11 startup time, etc.



If Wireshark doesn't show up and X11 has been installed correctly, try forcing X11 closed and trying a second time. The startup process can sometimes stall.

SnifferAPI	28/11/2014 15:34	Dossier de fichiers	
wireshark_dissector_source	27/11/2014 09:29	Dossier de fichiers	
.DS_Store	26/11/2014 22:05	Fichier DS_STORE	7 Ko
API_Manifest.txt	27/11/2014 09:29	Document texte	1 Ko
documentation.html	27/11/2014 09:29	Chrome HTML Do...	12 Ko
example.py	26/11/2014 22:20	JetBrains PyCharm	2 Ko
LICENSE.txt	27/11/2014 09:29	Document texte	2 Ko
Nordic Semiconductor Sniffer API Guide...	27/11/2014 09:29	Adobe Acrobat D...	468 Ko
readme.md	27/11/2014 09:29	Fichier MD	2 Ko
sniffer.py	28/11/2014 15:48	JetBrains PyCharm	7 Ko
sniffer_uart_protocol.xlsx	27/11/2014 09:29	Feuille de calcul ...	21 Ko

Using the sniffer.py Wrapper

To help you get started, we've made an easy to use wrapper called sniffer.py:

```
$ sudo python sniffer.py -h
usage: sniffer.py [-h] [-v] serialport
```

Interacts with the Bluefruit LE Friend Sniffer firmware

positional arguments:

```
serialport  serial port location ('COM14', '/dev/tty.usbserial-DN009WNO',
etc.)
```

optional arguments:

```
-h, --help  show this help message and exit
-v, --verbose  verbose mode (all serial traffic is displayed)
```

It takes a single argument, the COM port location, which will be something like 'COM15' on Windows, '/dev/ttyACM*' on Linux, or '/dev/tty.usbserial*' on OS X.

Linux

To run the sniffer wrapper on Linux, enter the following command (changing the serial port as necessary):

```
$ sudo python sniffer.py /dev/ttyACM0
```

OS X

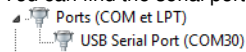
To run the sniffer wrapper on OS X, enter the following command (changing the serial port as necessary):

```
$ python sniffer.py /dev/tty.usbserial-DN009MP6
```

Windows

To run the sniffer wrapper on Windows, enter the following command (changing the serial port as necessary):

You can find the serial port used by the Bluefruit LE Sniffer by opening the Device Manager on your system and looking in the 'Ports' category:



```
python sniffer.py COM30
```

Scanning for Devices

If the wrapper was able to connect to the Bluefruit LE Sniffer, it will perform a 5 second scan for Bluetooth Low Energy devices in range, and ask you which device you want to listen to:

```
$ sudo python sniffer.py /dev/ttyACM0
[sudo] password for ktown:
Logging data to logs/capture.pcap
Connecting to sniffer on /dev/ttyACM0
Scanning for BLE devices (5s) ...
Found 2 BLE devices:
```

```
[1] "" (E7:0C:E1:BE:87:66, RSSI = -52)
[2] "" (14:99:E2:05:29:CF, RSSI = -94)
```

```
Select a device to sniff, or '0' to scan again
>
```

Once you select a device, it will start scanning that specific device, and you will see an update every second of the number of packets 'sniffed' from the device (where each '.' represents a packet):

```
Select a device to sniff, or '0' to scan again
> 1
Attempting to follow device E7:0C:E1:BE:87:66
```

Locating the Log File

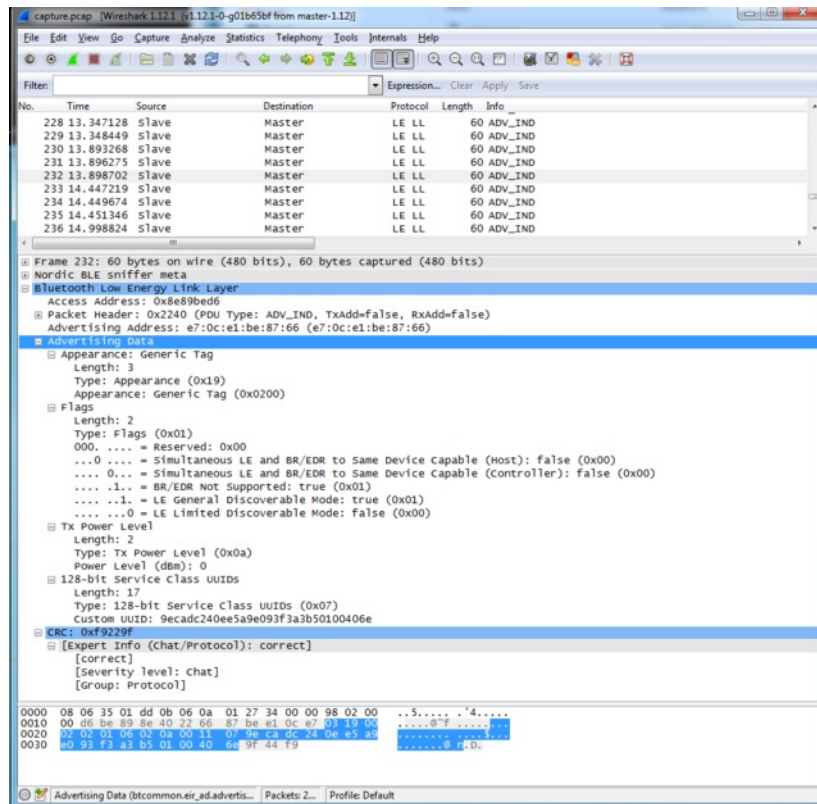
Once you've sniffed enough data, simply type **CTRL+C** to stop, and locate the libpcap log file at the path mentioned by the tool. This will normally be:

- **Windows:** 'C:\Users\ktown\AppData\Roaming\Nordic Semiconductor\Sniffer\logs \capture.pcap' (this will of course change based on your username)
- **OS X/Linux:** 'logs/capture.pcap' (relative to the location of the Python API)

Analyze Data in Wireshark

At this point, you simply need to open the capture.pcap file in Wireshark, and you can analyze the sniffed data!

The image below shows an advertising packet from a factory default [Bluefruit LE Friend](http://adafru.it/edl) (<http://adafru.it/edl>) board:



Note that the utility will start sniffing data as soon as you connect to the Bluefruit LE Sniffer, so early packets in the log file might contain advertising packets from other devices in range. It will only start filtering packets once you select a specific device via the selection dialogue.

For information on how to use Wireshark, have a look at the [notes on the official nRF Sniffer utility](http://adafru.it/k6F) (<http://adafru.it/k6F>), which describes some of the packet types you might encounter working with Bluetooth Low Energy.

FAQs

When I connect to a Central device, I don't see any connection data, but when I disconnect I see the advertising packets again. How do I capture data with a connected peripheral?

This is a limitation of the sniffer firmware from Nordic. Advertising in Bluetooth Low Energy happens on three dedicated channels, each running at it's own frequency. For the sniffer to 'follow' the connection it needs to be looking at the right channel when the connection happens, and there is a 2/3 chance that it is looking at another channel at any given moment.

To capture the connection and see data exchanges post connection, you may need to connect several times until the channels are aligned between the sniffer and the BLE peripheral+central devices.

How do I convert between Sniffer and Bluefruit LE firmware using SWD?

Reflashing Bluefruit LE modules over SWD (ex. switching to the sniffer firmware and back) **is at your own risk and can lead to a bricked device, and we can't offer any support for this operation!** You're on your own here, and there are unfortunately 1,000,000 things that can go wrong, which is why we offer two separate Bluefruit LE Friend boards -- the sniffer and the normal Bluefruit LE Friend board with the non-sniffer firmware, which provides a bootloader with fail safe features that prevents you from ever bricking boards via OTA updates.

AdaLink (SWD/JTAG Debugger Wrapper)

Transitioning between the two board types (sniffer and Bluefruit LE module) is unfortunately not a risk-free operation, and requires external hardware, software and know-how to get right, which is why it isn't covered by our support team.

That said ... if you're determined to go down that lonely road, and you have a [Segger J-Link](http://adafru.it/fYU) (which is what we use internally for production and development), or have already erased your Bluefruit LE device, you should have a look at [AdaLink](http://adafru.it/fPq), which is the tool we use internally to flash the four files required to restore a Bluefruit LE module. (Note: recent version of AdaLink also support the cheaper [STLink/V2](http://adafru.it/2548), though the J-Link is generally more robust if you are going to purchase a debugger for long term use.)

To go from the sniffer to Bluefruit LE firmware the mandatory Intel Hex files are available in the [Bluefruit LE Firmware repo](http://adafru.it/edX). You will need to flash:

- An appropriate bootloader image
- An appropriate SoftDevice image
- The Bluefruit LE firmware image
- The matching signature file containing a CRC check so that the bootloader accepts the firmware image above (located in the same folder as the firmware image)

The appropriate files are generally listed in the [version control .xml file](http://adafru.it/fPr) in the firmware repository.

If you are trying to flash the sniffer firmware (at your own risk!), you only need to flash a single .hex file, which you can find [here](http://adafru.it/fYV). The sniffer doesn't require a SoftDevice image, and doesn't use the fail-safe bootloader -- which is why changing is a one way and risky operation if you don't have a supported SWD debugger.

Adafruit_nF51822_Flasher

We also have an internal python tool available that sits one level higher than AdaLink (referenced above), and makes it easier to flash specific versions of the official firmware to a Bluefruit LE module. For details, see the [Adafruit_nRF51822_Flasher](http://adafru.it/fVL) repo.

Why isn't the plugin working in Wireshark?

The plugin was written for **Wireshark 1.12.x** and won't work with older versions of the tool or the new 2.x family. Be sure to download an appropriate version (for example 1.12.1, which is the version used in this guide).

- [Windows x64 Releases](http://adafru.it/oYF)
- [Windows x32 Releases](http://adafru.it/oZa)
- [OS X Releases](http://adafru.it/oZb)

Why am I being warned my firmware is out of data but updates fail?

The Adafruit board has a small difference compared to the original Nordic HW that Nordic wrote their sniffer firmware for. To keep the cost as low as possible, we don't populate the optional 32.768KHz RTC crystal on our boards, whereas it is present on the more expensive Nordic development kit.

Because the startup code in the sniffer firmware from Nordic uses this crystal, we had to request a custom version from Nordic that uses the internal 16MHz RC oscillator instead. When providing us the custom firmware, they changed the version number slightly, which is the reason for the warning message.

You can safely ignore the firmware update warning and use the device as normal and in fact updating to a firmware from Nordic won't work

unless you also solder the optional 32.768KHz crystal on the bottom of your PCB as well.

How can I check that the sniffer is outputting data?

If you think there is a problem with your sniffer, you should look at the LED closest to the black SWD connector box at the end of the board. It should flash every time Bluetooth Low Energy activity is detected.

You can also open a Terminal Emulator (Putty, RealTerm, etc.) with the following settings, and you should see data coming out almost as soon as you plug the sniffer in:

- Baud Rate: 460800
- HW Flow Control: RTS + CTS Enabled

What is the difference between v1.0 (blue boards) and v3.0 (black boards)?

Version 3.0 uses the much cheaper CP2104 USB to Serial bridge, and drops the SWD connector which had to be manually placed during the manufacturing process. This allows us to offer the v3.0 board at a significant discount compared to v1.0, without sacrificing functionality that 99% of customers required. (The SWD pins are still available as pads on the bottom of the PCB if you need them!).



Downloads

Files

- [EagleCAD PCB files on GitHub \(http://adafru.it/oYD\)](http://adafru.it/oYD)
- [Bluetooth LE module Datasheet \(http://adafru.it/oYE\)](http://adafru.it/oYE)
- [Uses an FT231x \(FTDI\) USB-to-Serial converter chip, drivers are available for all operating systems here\(http://adafru.it/aJv\)](http://adafru.it/aJv)

Schematic

Click to embiggen

