



Chipsmall Limited consists of a professional team with an average of over 10 year of expertise in the distribution of electronic components. Based in Hongkong, we have already established firm and mutual-benefit business relationships with customers from,Europe,America and south Asia,supplying obsolete and hard-to-find components to meet their specific needs.

With the principle of “Quality Parts,Customers Priority,Honest Operation,and Considerate Service”,our business mainly focus on the distribution of electronic components. Line cards we deal with include Microchip,ALPS,ROHM,Xilinx,Pulse,ON,Everlight and Freescale. Main products comprise IC,Modules,Potentiometer,IC Socket,Relay,Connector.Our parts cover such applications as commercial,industrial, and automotives areas.

We are looking forward to setting up business relationship with you and hope to provide you with the best service and solution. Let us make a better world for our industry!



## Contact us

Tel: +86-755-8981 8866 Fax: +86-755-8427 6832

Email & Skype: info@chipsmall.com Web: www.chipsmall.com

Address: A1208, Overseas Decoration Building, #122 Zhenhua RD., Futian, Shenzhen, China



## 3.5x2.9mm Compact Tactile Switch

### Features

#### Optimized Mechanical Features

- Surface mount gull-wing terminal configurations
- Compatible with IR reflow and manual soldering
- Variety of operating force options

#### Optimized Contact System

- Excellent tactile feedback

#### Materials

- Silver coated terminals for better solderability
- High temperature materials (UL94V-0)
- RoHS compliant



## Electrical and Mechanical Specifications

#### Switch Contact Resistance

500 milliohms maximum

#### Insulation Resistance

100 Megohms minimum between insulated terminals

#### Maximum Rating

50mA, 12 VDC

#### Dielectric Strength

250 VAC for 1 minute between adjacent terminals

#### Operating Force

160 or 220 gf

#### Travel

0.2 mm

#### Operating Temperature

- 40°C to +85°C

#### Storage Temperature

- 40°C to +85°C

#### Actuator Strength

3 Kgf. maximum

#### Actuation Life

100,000 cycles

#### Allowable Solder Time

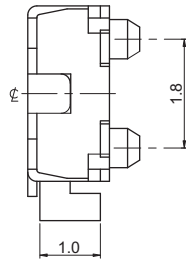
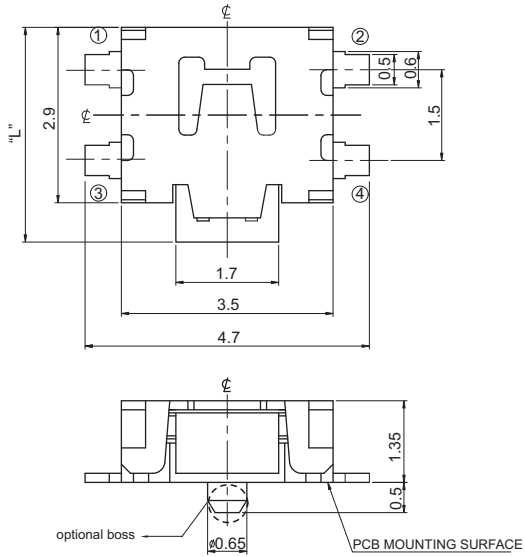
IR Reflow: Up to 5 seconds at 260°C

Manual soldering: Up to 3 seconds at 350°C

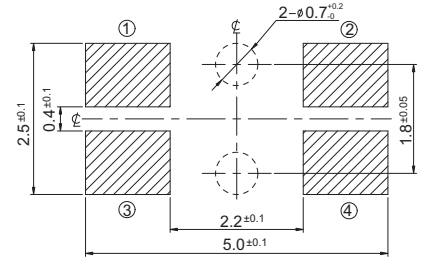
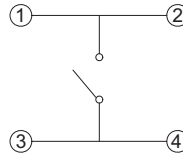
#### Packaging

Standard: Tape and reel packaging with 330mm diameter reel and 12mm wide plastic tape

## CTS SERIES 226EM1...(B) - Surface Mount Gull Wing Type1, No Ground Terminal



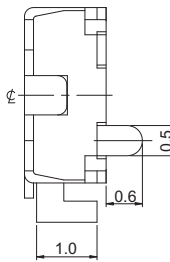
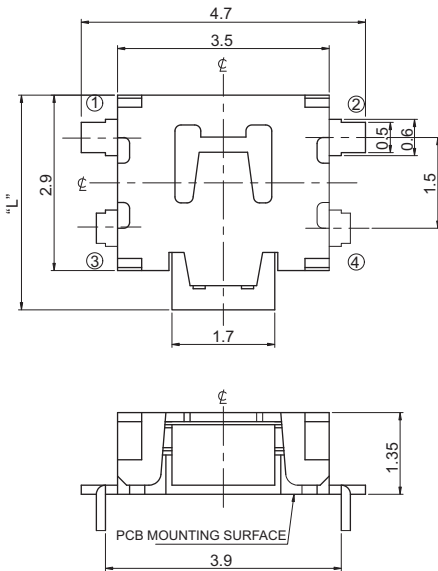
CIRCUIT DIAGRAM



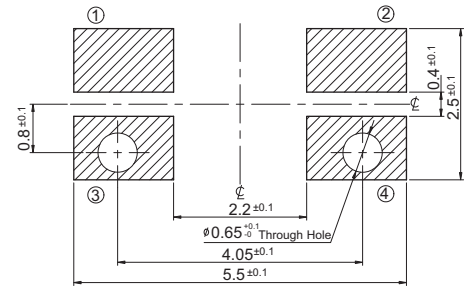
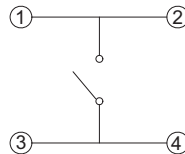
PCB LAYOUT

DIMENSION : mm  
STANDARD TOLERANCE :  
.X (1 PLACE) : ±0.2

## CTS SERIES 226EM2... - Surface Mount Gull Wing Type2, No Ground Terminal



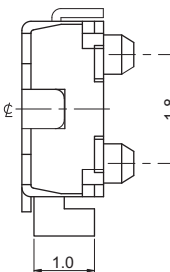
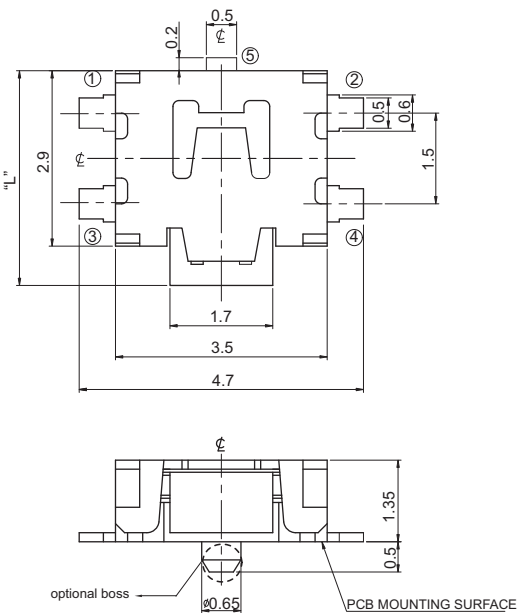
CIRCUIT DIAGRAM



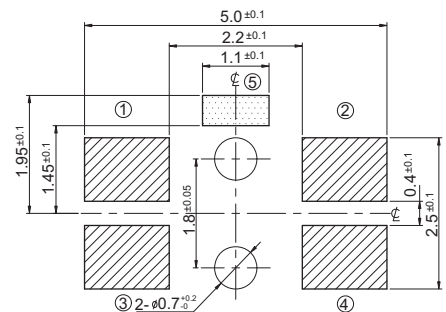
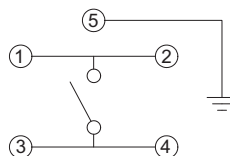
PCB LAYOUT

DIMENSION : mm  
STANDARD TOLERANCE :  
.X (1 PLACE) : ±0.2

## CTS SERIES 226EM1...(B)G - Surface Mount Gull Wing Type1, With Ground Terminal



CIRCUIT DIAGRAM

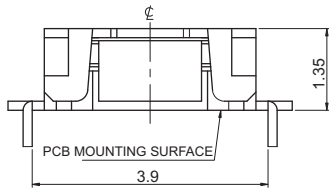
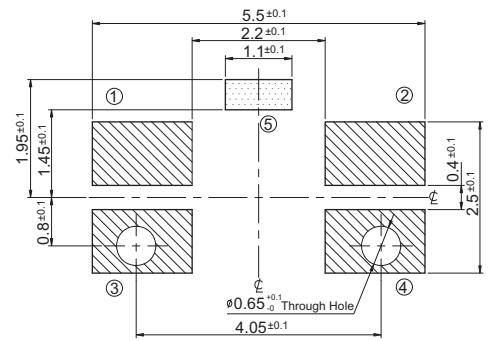
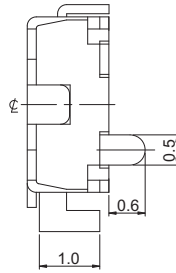
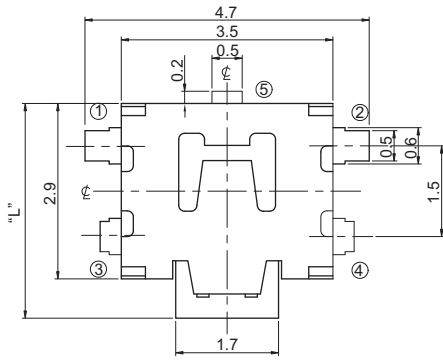


PCB LAYOUT

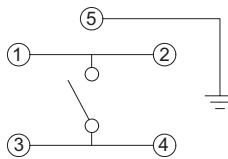
DIMENSION : mm  
STANDARD TOLERANCE :  
.X (1 PLACE) : ±0.2



# CTS SERIES 226EM2...G - Surface Mount Gull Wing Type2, With Ground Terminal



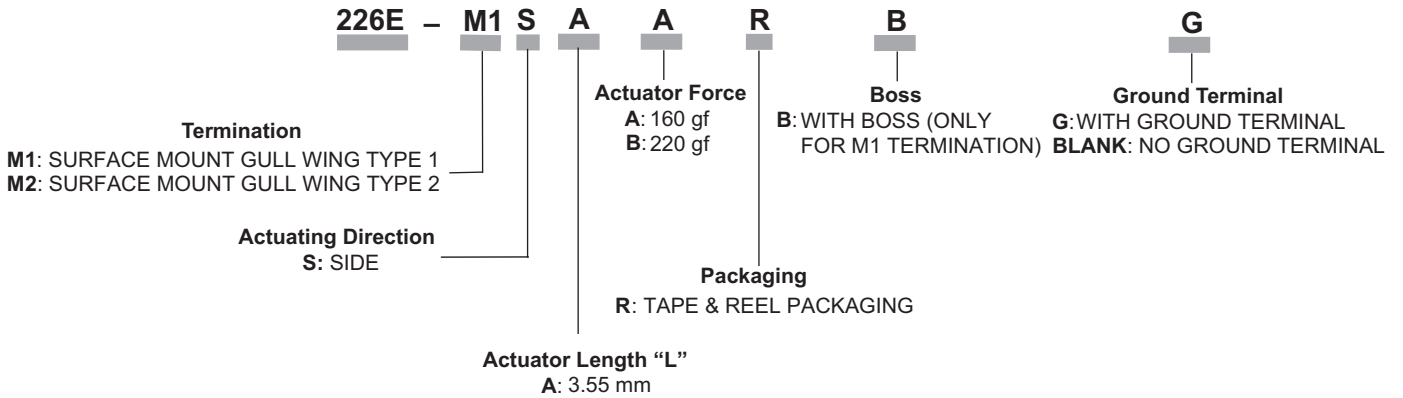
## CIRCUIT DIAGRAM



## PCB LAYOUT

DIMENSION : mm  
STANDARD TOLERANCE :  
X (1 PLACE) : ±0.2

## Ordering Information



## Note:

Consult CTS for other common features not listed.