



Chipsmall Limited consists of a professional team with an average of over 10 year of expertise in the distribution of electronic components. Based in Hongkong, we have already established firm and mutual-benefit business relationships with customers from,Europe,America and south Asia,supplying obsolete and hard-to-find components to meet their specific needs.

With the principle of “Quality Parts,Customers Priority,Honest Operation,and Considerate Service”,our business mainly focus on the distribution of electronic components. Line cards we deal with include Microchip,ALPS,ROHM,Xilinx,Pulse,ON,Everlight and Freescale. Main products comprise IC,Modules,Potentiometer,IC Socket,Relay,Connector.Our parts cover such applications as commercial,industrial, and automotives areas.

We are looking forward to setting up business relationship with you and hope to provide you with the best service and solution. Let us make a better world for our industry!



## Contact us

Tel: +86-755-8981 8866 Fax: +86-755-8427 6832

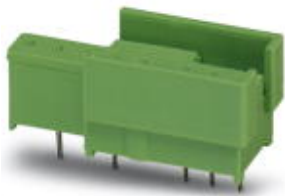
Email & Skype: info@chipsmall.com Web: www.chipsmall.com

Address: A1208, Overseas Decoration Building, #122 Zhenhua RD., Futian, Shenzhen, China



## Semi-conductor relay - SIM-AMS 2 - 2271028

Please be informed that the data shown in this PDF Document is generated from our Online Catalog. Please find the complete data in the user's documentation. Our General Terms of Use for Downloads are valid (<http://phoenixcontact.com/download>)



The illustration shows version SIM-AMS 1

Plug-in base, for standard I/O modules, with different numbers of contacts, can be labeled with marker pins BN or BNB



### Key commercial data

Packing unit	1 pc
GTIN	 4 017918 103491
Weight per Piece (excluding packing)	9.87 GRM
Custom tariff number	85369010
Country of origin	Poland

### Technical data

#### Dimensions

Pin dimensions	1,1 x 0,5 mm
Hole diameter	1.4 mm

#### General

Nominal voltage $U_N$	250 V AC
Nominal current $I_N$	5 A
Number of contacts, type	2
Color	green
Insulating material	PA
Standards/regulations	DIN VDE 0110b, Gr. C for 250 V DC

## Semi-conductor relay - SIM-AMS 2 - 2271028

### Classifications

#### eCl@ss

eCl@ss 4.0	27371102
eCl@ss 4.1	27371102
eCl@ss 5.0	27371001
eCl@ss 5.1	27371001
eCl@ss 6.0	27371001
eCl@ss 7.0	27371001
eCl@ss 8.0	27371001

#### ETIM

ETIM 2.0	EC000196
ETIM 3.0	EC000196
ETIM 4.0	EC000196
ETIM 5.0	EC002055

#### UNSPSC

UNSPSC 6.01	30211916
UNSPSC 7.0901	39121542
UNSPSC 11	39121542
UNSPSC 12.01	39121542
UNSPSC 13.2	39121542

### Approvals

#### Approvals

---

##### Approvals

UL Recognized / GOST

---

##### Ex Approvals

---

Approvals submitted

---

#### Approval details

# Semi-conductor relay - SIM-AMS 2 - 2271028

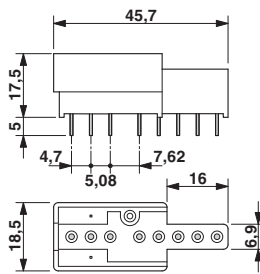
## Approvals

UL Recognized	
Nominal current I <sub>N</sub>	5 A
Nominal voltage U <sub>N</sub>	300 V

GOST	
------	--

## Drawings

Dimensioned drawing



Schematic diagram

