



Chipsmall Limited consists of a professional team with an average of over 10 year of expertise in the distribution of electronic components. Based in Hongkong, we have already established firm and mutual-benefit business relationships with customers from,Europe,America and south Asia,supplying obsolete and hard-to-find components to meet their specific needs.

With the principle of "Quality Parts,Customers Priority,Honest Operation,and Considerate Service",our business mainly focus on the distribution of electronic components. Line cards we deal with include Microchip,ALPS,ROHM,Xilinx,Pulse,ON,Everlight and Freescale. Main products comprise IC,Modules,Potentiometer,IC Socket,Relay,Connector.Our parts cover such applications as commercial,industrial, and automotives areas.

We are looking forward to setting up business relationship with you and hope to provide you with the best service and solution. Let us make a better world for our industry!



## Contact us

Tel: +86-755-8981 8866 Fax: +86-755-8427 6832

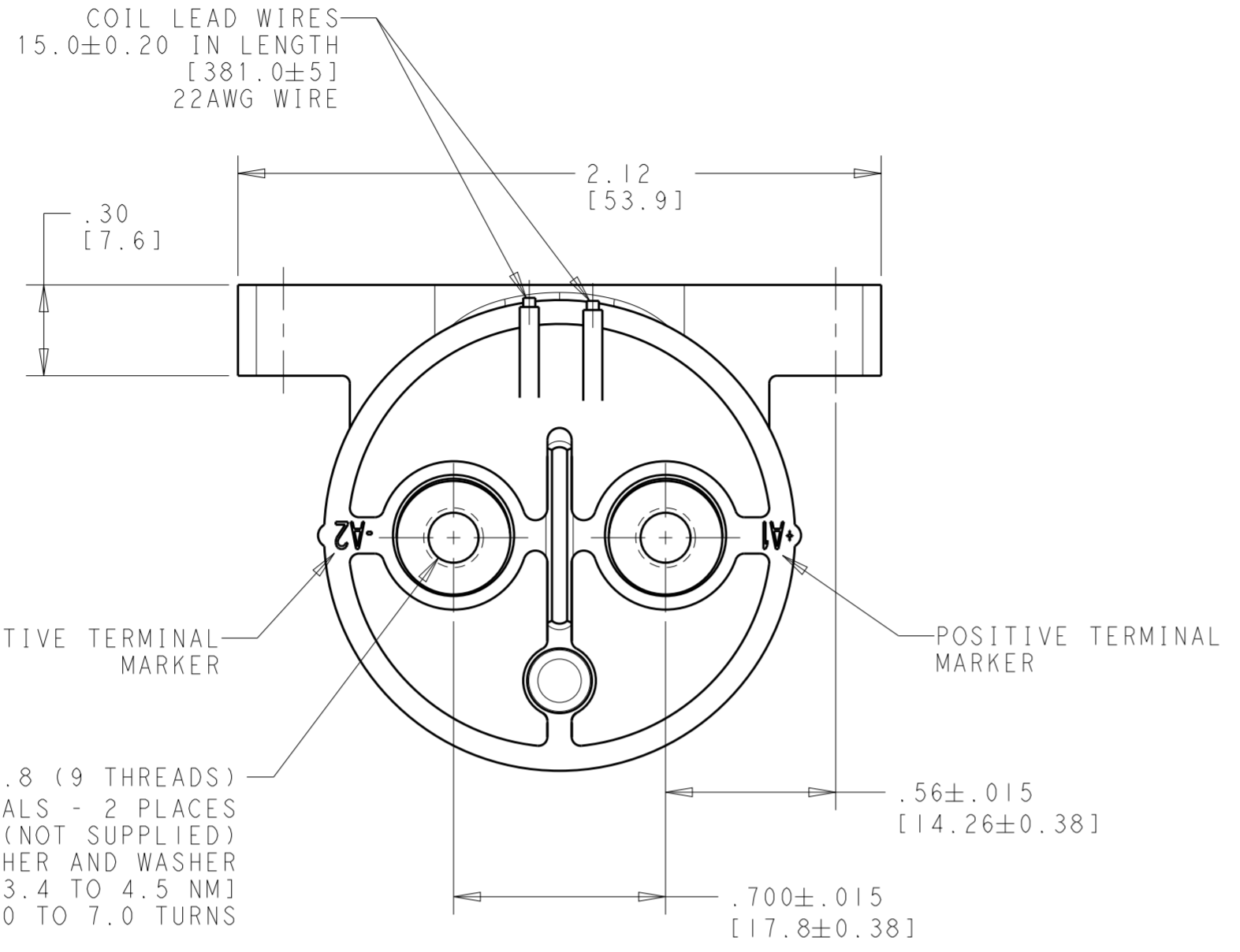
Email & Skype: info@chipsmall.com Web: www.chipsmall.com

Address: A1208, Overseas Decoration Building, #122 Zhenhua RD., Futian, Shenzhen, China

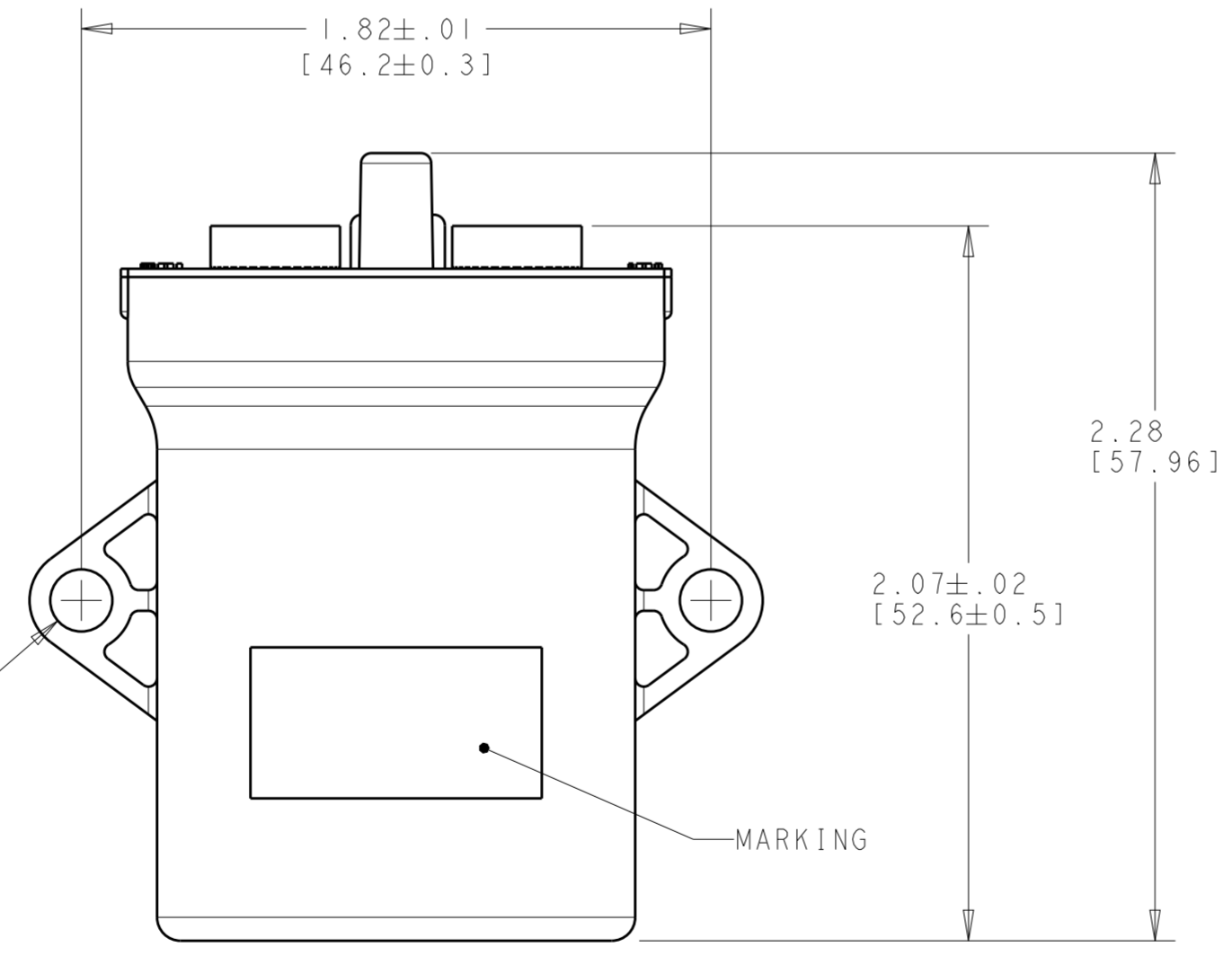


THIS DRAWING IS UNPUBLISHED. RELEASED FOR PUBLICATION 20  
 © COPYRIGHT 20 BY - ALL RIGHTS RESERVED.

| REVISIONS |     |                           |           |       |
|-----------|-----|---------------------------|-----------|-------|
| P         | LTR | DESCRIPTION               | DATE      | APVD  |
| A         |     | INITIAL RELEASE           | 25NOV2013 | KW TB |
| B         |     | REVISED PER ECO-14-018880 | 16DEC2014 | DD TB |
|           |     |                           |           |       |



- 8.4mm<sup>2</sup> CONDUCTOR. CURRENT RATING DEPENDS UPON CONDUCTOR SIZE. KEEP TERMINALS BELOW 150°C MAXIMUM CONTINUOUS.
- 3 MINUTES @ +40°C AMBIENT WITH 8.4mm<sup>2</sup> (#8AWG) CONDUCTOR.
- A COIL ECONOMIZER CIRCUIT IS NEEDED IF COIL IS ENERGIZED FOR AN EXTENDED LENGTH OF TIME AT A HIGH OPERATING TEMPERATURE (I.E. 85°C).



MOUNTING HARDWARE (NOT SUPPLIED):  
 2 x M4 BOLT, LOCKWASHER AND WASHER  
 TORQUE: 20 IN-LBS MAX [2.3 NM MAX]

2272229-1  
 PART NUMBER

|  |              |                                 |   |           |
|--|--------------|---------------------------------|---|-----------|
| THIS DRAWING IS A CONTROLLED DOCUMENT. |              | DWN<br>K. WHITAKER<br>25NOV2013 | TE Connectivity   |           |
| DIMENSIONS:<br>INCHES [mm]             |              | CHK<br>T. BANAS<br>25NOV2013    |   |           |
|  |              | APVD<br>T. BANAS<br>2NOV2013    | NAME<br>RELAY,<br>SIDE MOUNT, EVC135<br>(15.3 OHM COIL) |           |
| TOLERANCES UNLESS OTHERWISE SPECIFIED: |              | PRODUCT SPEC                    | SIZE  | CAGE CODE |
| 0 PLC                                  | ±-           | -                               | A2  | 00779     |
| 1 PLC                                  | ±.012 [0.3]  | APPLICATION SPEC                | DRAWING NO<br>C-2272229                                 |           |
| 2 PLC                                  | ±.005 [0.13] | WEIGHT                          | RESTRICTED TO   |           |
| 3 PLC                                  | ±-           | -                               | -   |           |
| 4 PLC                                  | ±-           | CUSTOMER DRAWING                | SCALE   | SHEET     |
| ANGLES                                 | ±1°          |                                 | 2:1   | 1 OF 1    |
| FINISH                                 | -            |                                 |   | REV B     |