



Chipsmall Limited consists of a professional team with an average of over 10 year of expertise in the distribution of electronic components. Based in Hongkong, we have already established firm and mutual-benefit business relationships with customers from,Europe,America and south Asia,supplying obsolete and hard-to-find components to meet their specific needs.

With the principle of “Quality Parts,Customers Priority,Honest Operation,and Considerate Service”,our business mainly focus on the distribution of electronic components. Line cards we deal with include Microchip,ALPS,ROHM,Xilinx,Pulse,ON,Everlight and Freescale. Main products comprise IC,Modules,Potentiometer,IC Socket,Relay,Connector.Our parts cover such applications as commercial,industrial, and automotives areas.

We are looking forward to setting up business relationship with you and hope to provide you with the best service and solution. Let us make a better world for our industry!



Contact us

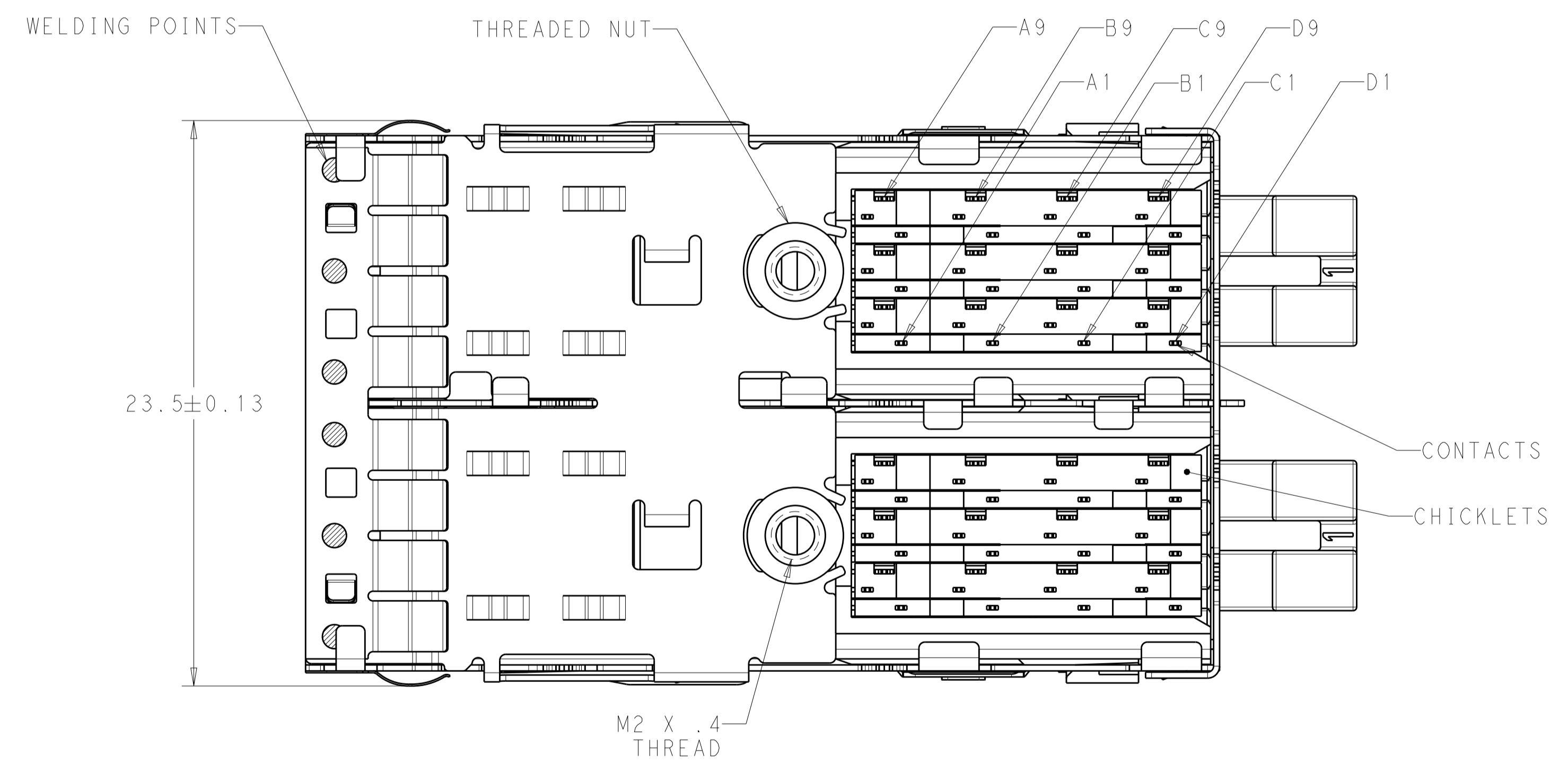
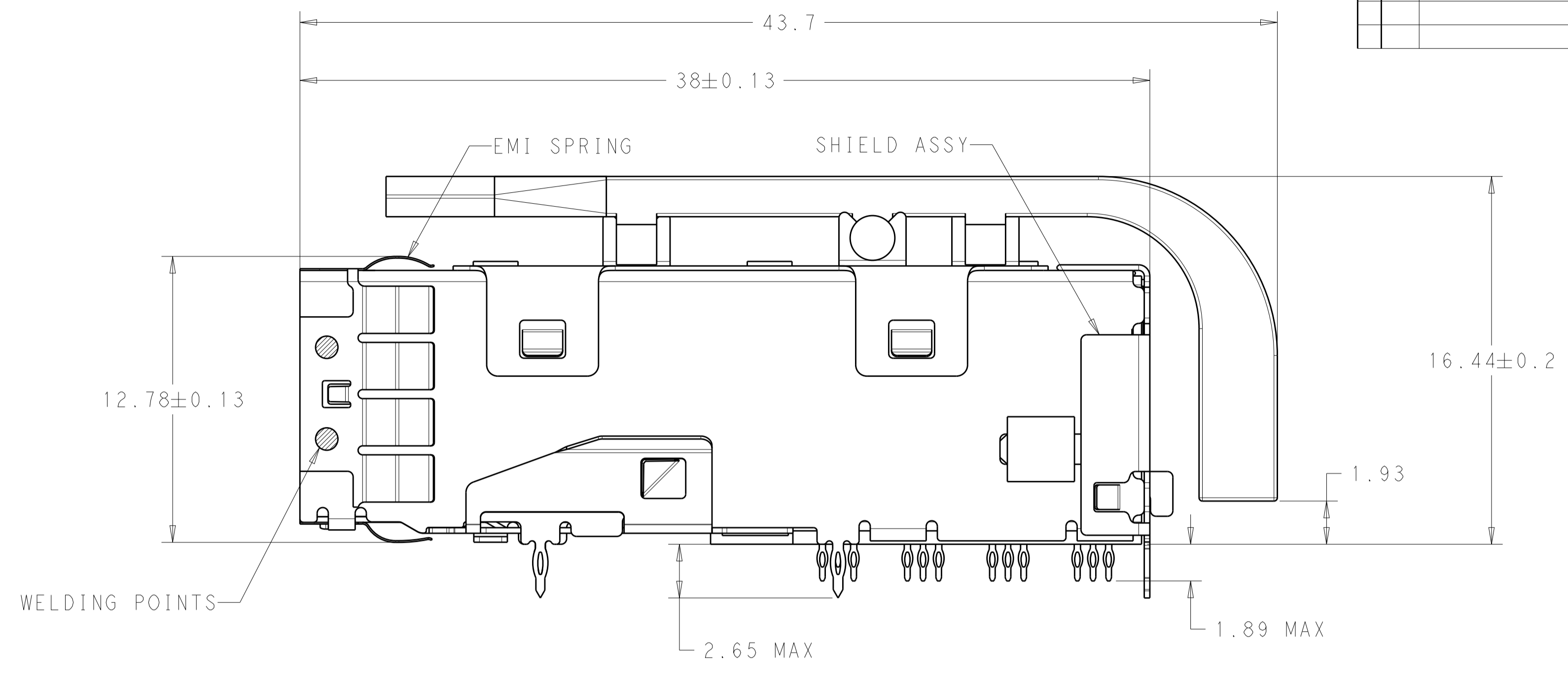
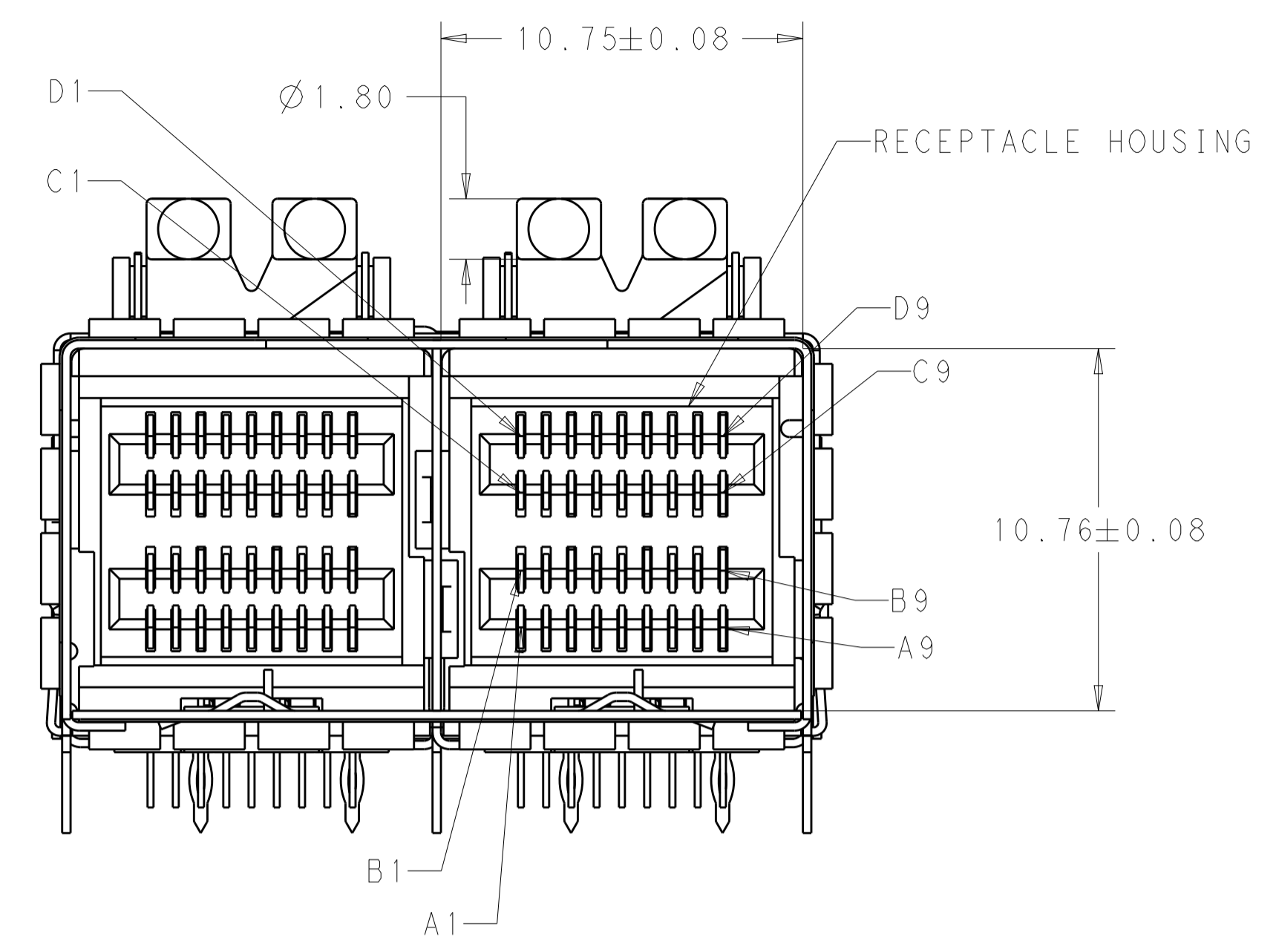
Tel: +86-755-8981 8866 Fax: +86-755-8427 6832

Email & Skype: info@chipsmall.com Web: www.chipsmall.com

Address: A1208, Overseas Decoration Building, #122 Zhenhua RD., Futian, Shenzhen, China



LOC		DIST		REVISIONS			
P	LTN	DESCRIPTION	DATE	DMN	APVD		
A		INITIAL RELEASE	21FEB2014	BM	DG		
B		REVISED PER ECO-15-013506	03MAY2016	JY	SH		



- 1. MATERIALS**
 RECEPTACLE HOUSING: LCP, BLACK, UL94V-0 RATED
 SHIELD ASSY: NICKEL-SILVER COPPER ALLOY
 CONTACTS: COPPER ALLOY
 EMI SPRING: COPPER ALLOY
 THREADED NUT: BRASS
 CHICKLETS: LCP, BLACK, UL 94V-0 RATED
 LIGHTPIPE CLIP: STAINLESS STEEL
 LIGHTPIPE: POLYCARBONATE
- 2. FINISH**
 EMI SPRING: TIN PLATE OVER NICKEL PLATE. NON-PLATED EDGES PERMISSABLE
 THREADED NUT: NICKEL PLATE
- 3. CONTACT MATING AREA:** 0.76µm MIN GOLD IN CONTACT AREA, 1.75µm MIN TIN ON PCB TAILS. ALL OVER 1.27µm MIN NICKEL UNDERPLATE.
 NEEDLE EYE: 1.25µm MIN TIN OVER 1.27µm MIN NICKEL.
 REMINDER OF CONTACT: 0.76µm MIN NICKEL.
- 4. THREAD LENGTH OF FASTENER = PCB THICKNESS+1.45 MAX**
- 5. THIS PRODUCT HAS NOT COMPLETED VALIDATION/QUALIFICATION TESTING**
- 6. RECOMMENDED TRACE KEEP OUT ZONE**
- 7. RECEPTACLE ASSEMBLY AND LIGHT PIPE ASSEMBLY ARE PACKAGED INDIVIDUALLY, THEN KIT PACKAGED.**

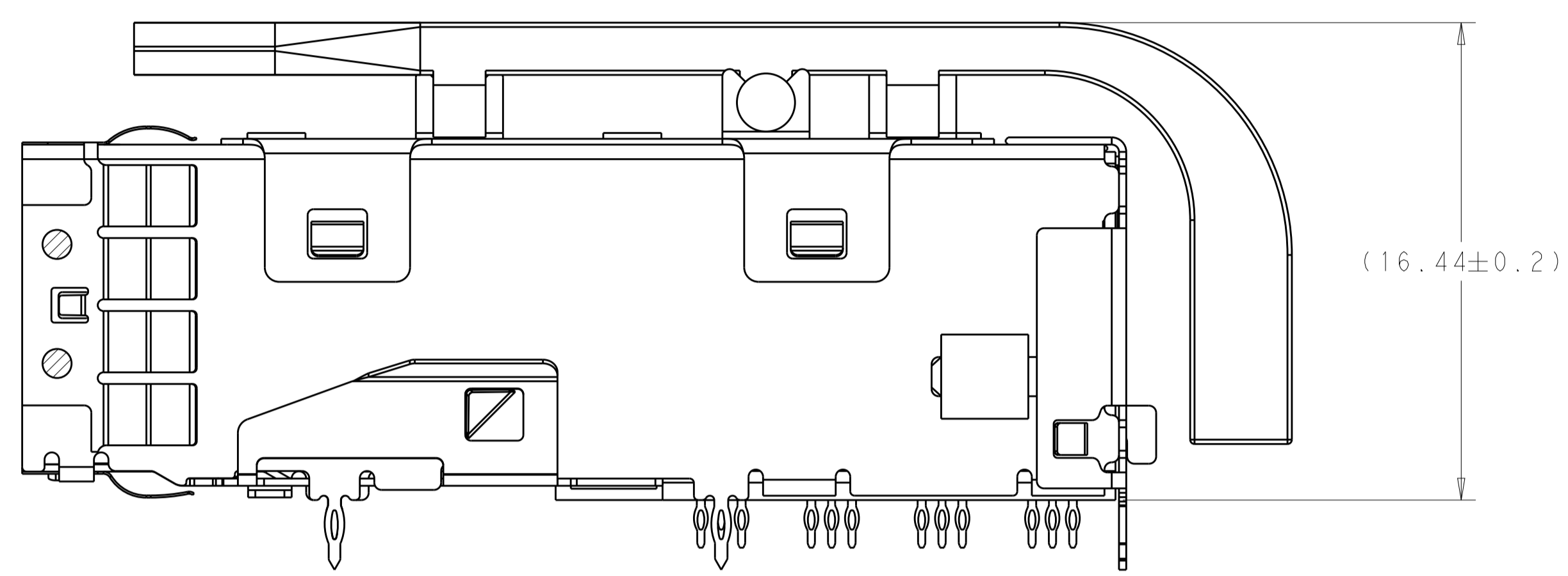
LOWER HEIGHT	14.53	2274684-2
STANDARD HEIGHT	15.54	2274684-1
LIGHT PIPE	H HOLE HEIGHT OF LP	PART NUMBER

THIS DRAWING IS A CONTROLLED DOCUMENT. DIMENSIONING AND TOLERANCING PER: ASME 11.4-2009

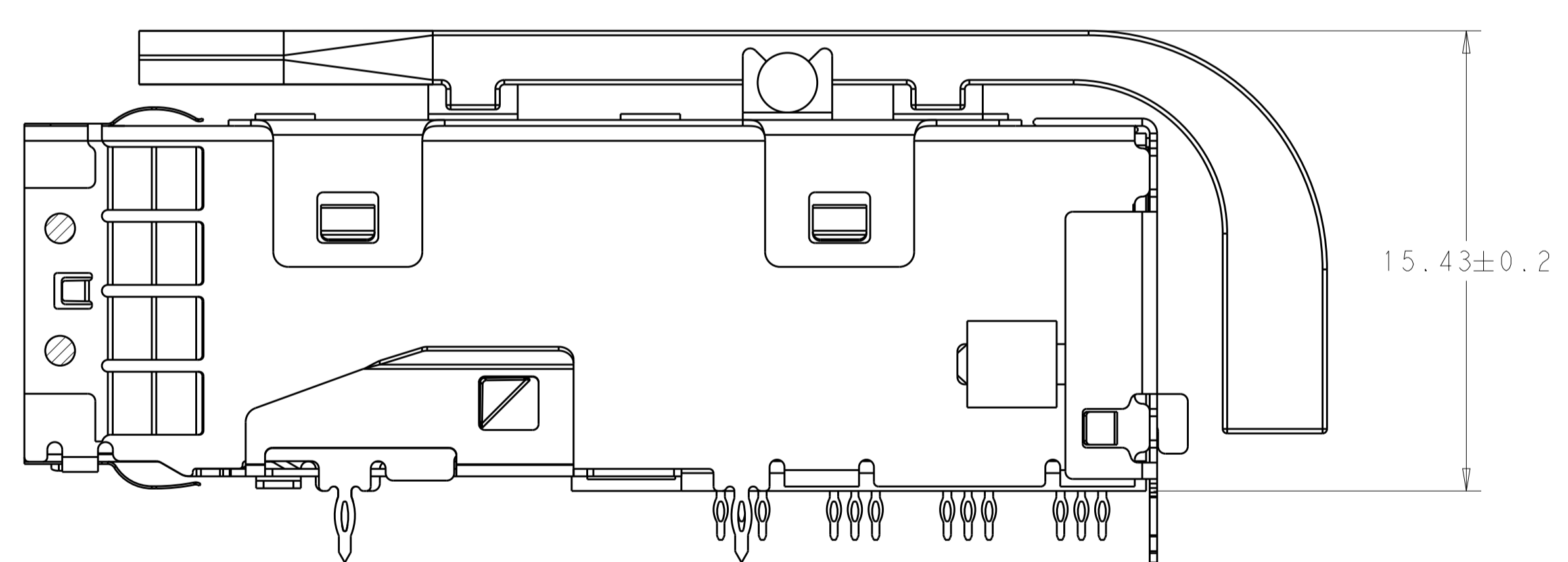
DMN: B. MATTHEWS 21FEB2014	CHK: D. GORENC 21FEB2014	APVD: D. GORENC 21FEB2014	NAME: RECEPTACLE ASSEMBLY, MINI-SAS HD, 2X W/ LIGHT PIPES
DIMENSIONS: mm		TOLERANCES UNLESS OTHERWISE SPECIFIED:	PRODUCT SPEC: 108-2462
0 PLC	±		APPLICATION SPEC: 114-13316
1 PLC	±0.25		WEIGHT: -
2 PLC	±0.13		CUSTOMER DRAWING
3 PLC	±		SCALE: 6:1
4 PLC	±		SHEET: 1 OF 4
ANGLES	±		REV: B
MATERIAL:	FINISH:		

STE TE Connectivity
 A100779 ©=2274684


LOC		DIST		REVISIONS			
P.	LTN	DESCRIPTION	DATE	DWN	APVD		
-	-	SEE SHEET 1	-	-	-		



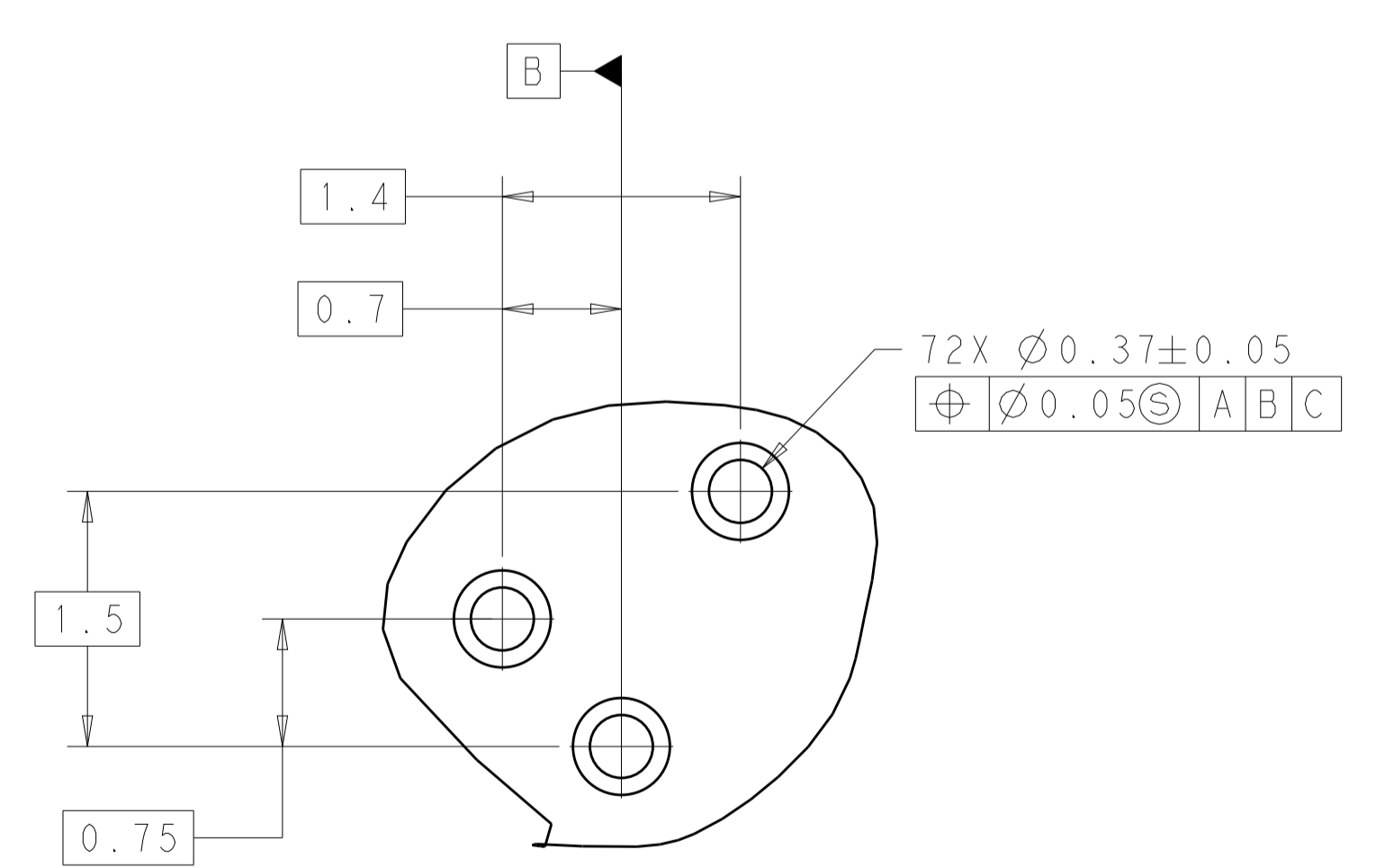
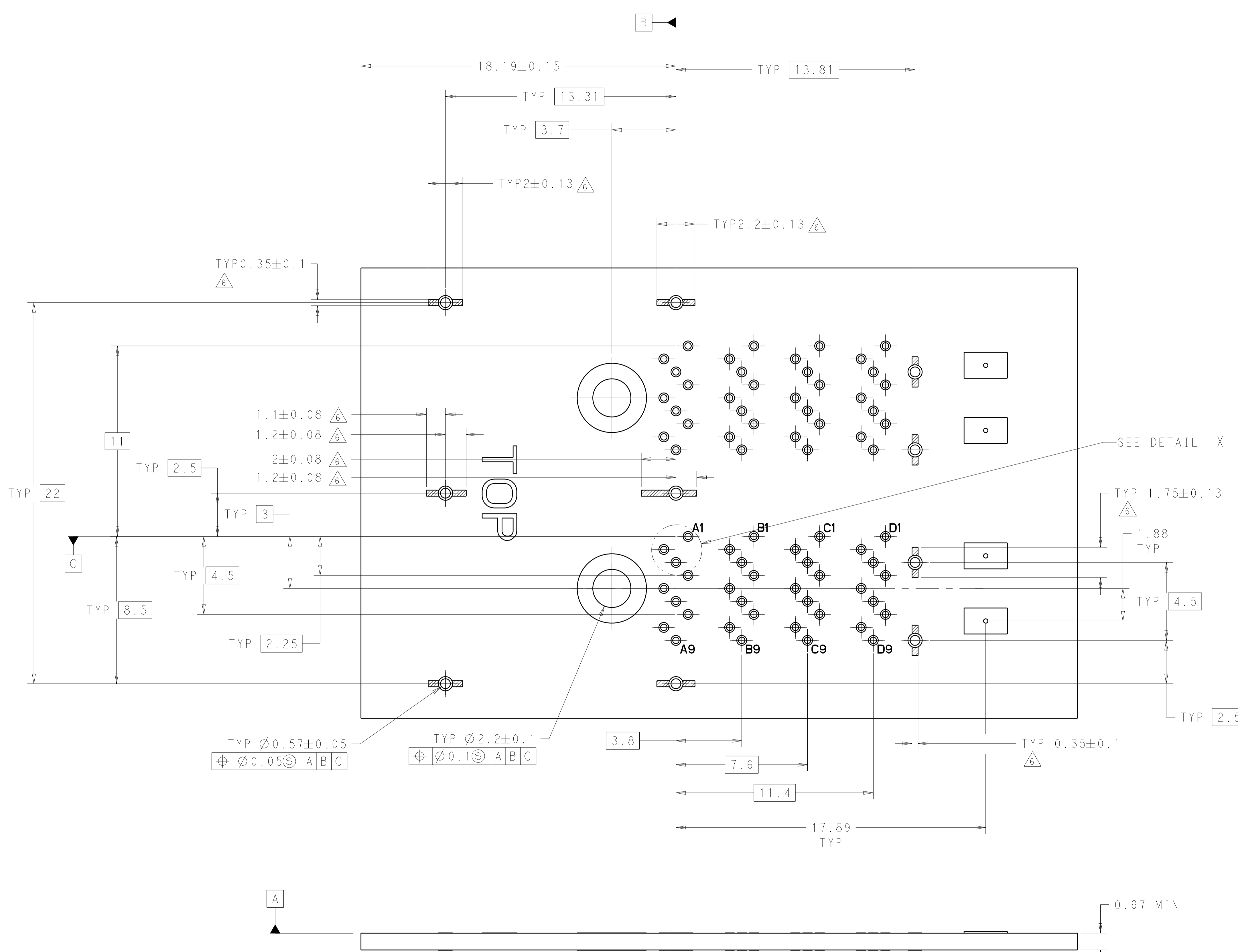
2274684-1
 SCALE 6:1



2274684-2
 UNSPECIFIED DIMENSIONS ARE SAME AS 2274684-1
 SCALE 6:1

THIS DRAWING IS A CONTROLLED DOCUMENT.		DWN B. MATTHEWS 21FEB2014	 TE Connectivity
		CHK D. GORENC 21FEB2014	
DIMENSIONS:		APVD D. GORENC 21FEB2014	NAME RECEPTACLE ASSEMBLY, MINI-SAS HD, 2X W/ LIGHT PIPES
mm	TOLERANCES UNLESS OTHERWISE SPECIFIED:	PRODUCT SPEC 108-2462	SIZE A100779
	0 PLC ±	APPLICATION SPEC 114-13316	DRAWING NO C=2274684
	1 PLC ±0.25	WEIGHT	RESTRICTED TO
	2 PLC ±0.13	CUSTOMER DRAWING	SCALE 6:1 SHEET 2 OF 4 REV B
	3 PLC ±		
	4 PLC ±		
	ANGLES ±		
MATERIAL	FINISH		

LOC	DIST	REVISIONS			
P.	LTN	DESCRIPTION	DATE	DWN	APVD
-	-	SEE SHEET 1	-	-	-

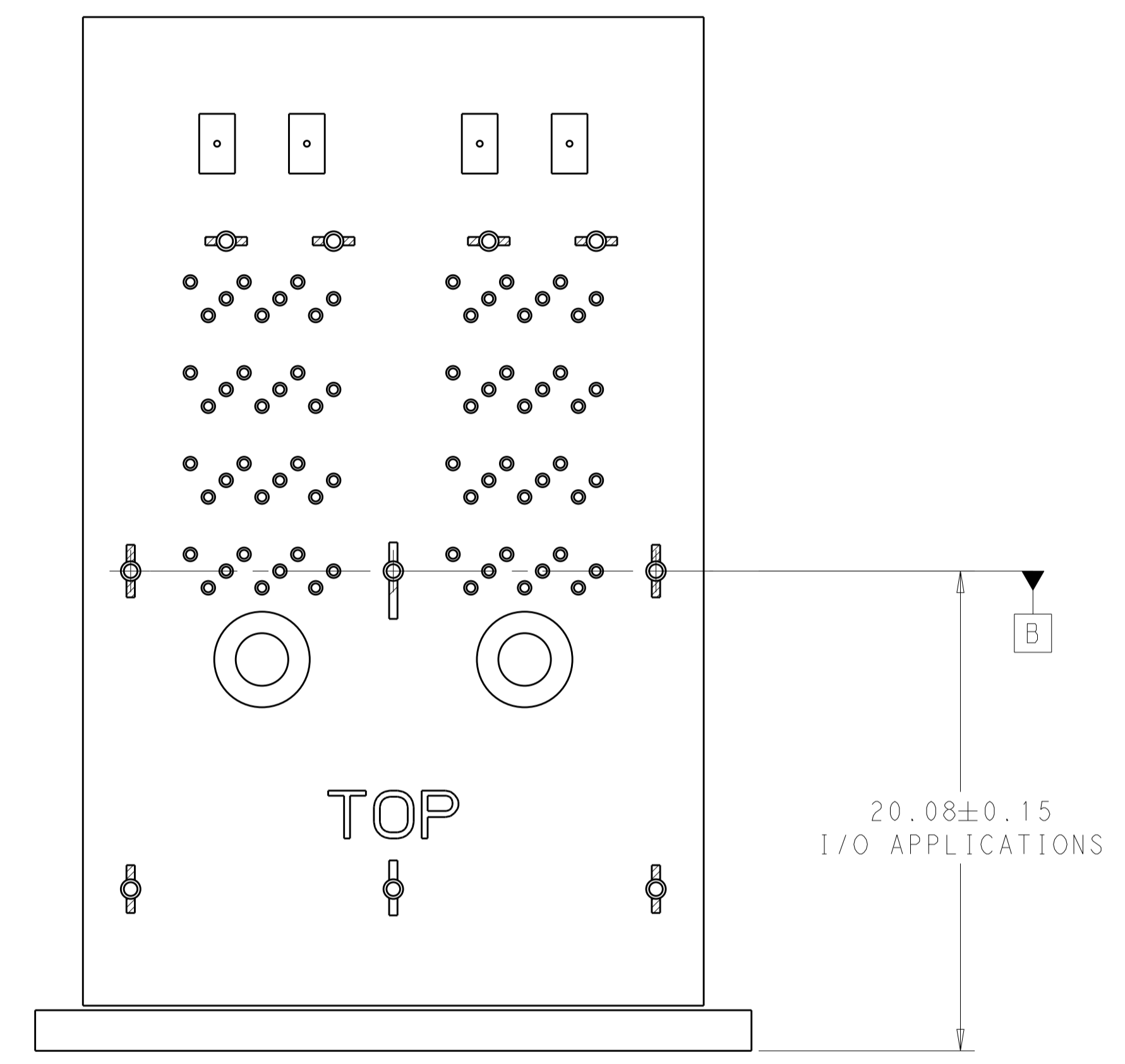
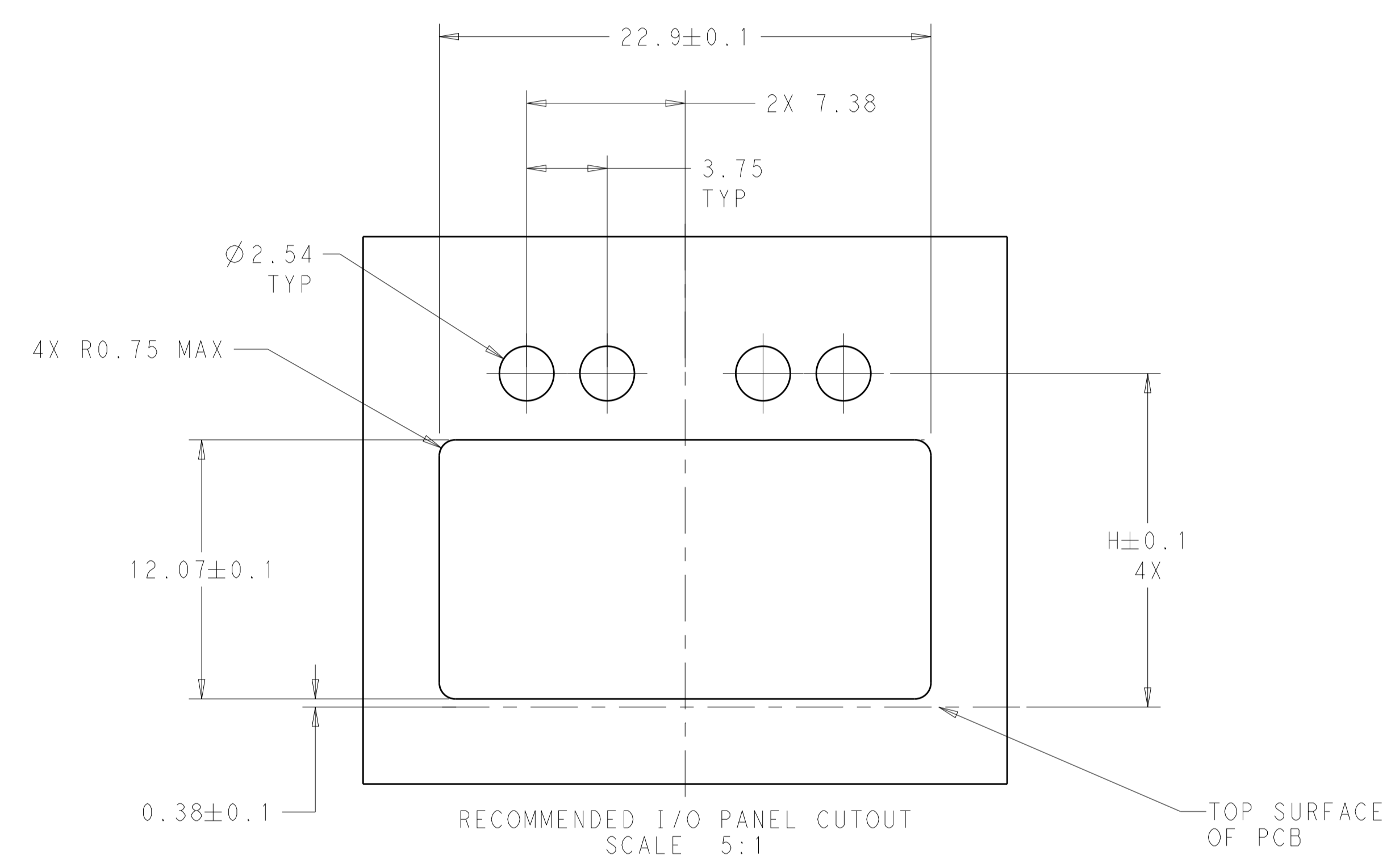


DETAIL X
SCALE 25:1

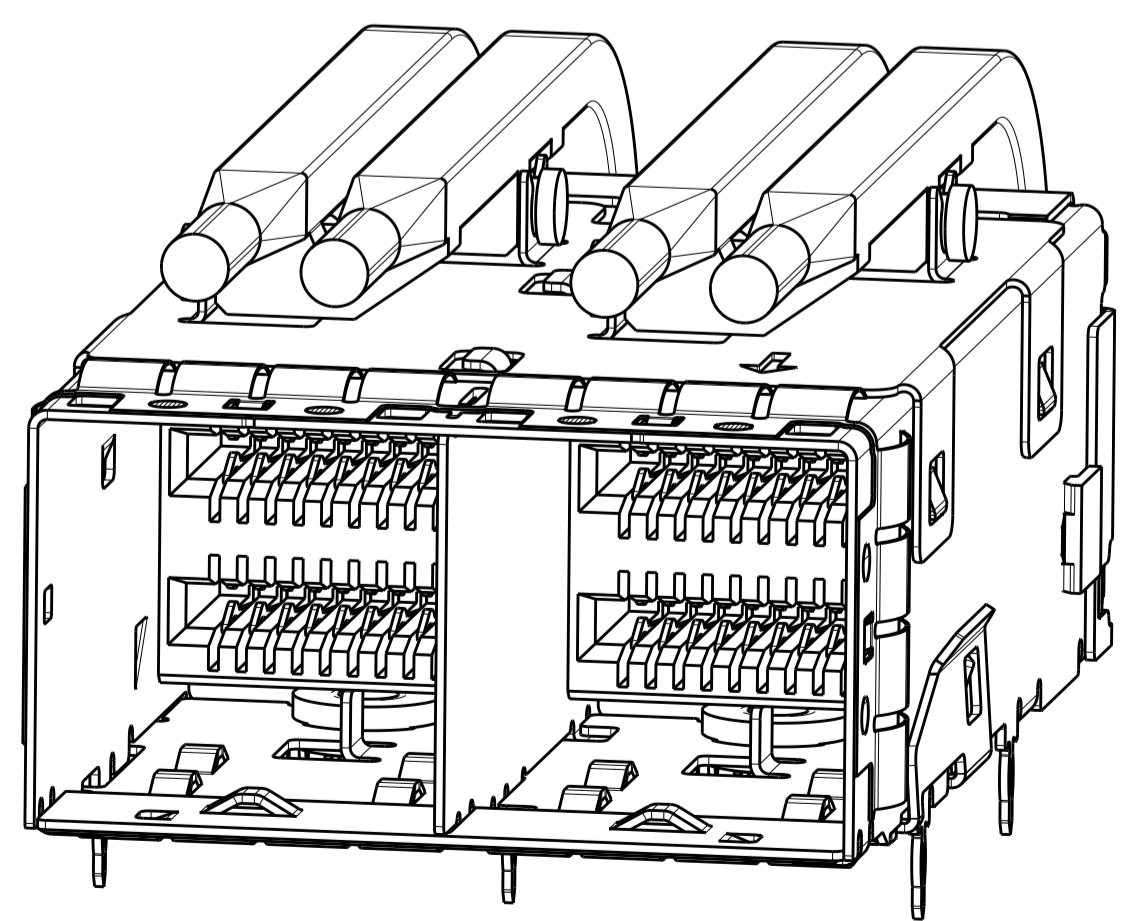
RECOMMENDED PCB LAYOUT

THIS DRAWING IS A CONTROLLED DOCUMENT. DIMENSIONING AND TOLERANCING PER ASME Y14.5M-2009		DWN: B. MATTHEWS 21FEB2014 CHK: D. GORENC 21FEB2014	TE Connectivity	
DIMENSIONS: mm	TOLERANCES UNLESS OTHERWISE SPECIFIED:	APVD: D. GORENC 21FEB2014	NAME: RECEPTACLE ASSEMBLY, MINI-SAS HD, 2X W/ LIGHT PIPES	
0 PLC ±	0.25	PRODUCT SPEC: 108-2462	SIZE: 114-13316	
2 PLC ±	0.13	APPLICATION SPEC: 114-13316	RESTRICTED TO: A100779C=2274684	
3 PLC ±	0.13	WEIGHT: -	SCALE: 5:1 SHEET 3 OF 4 REV B	
4 PLC ±	0.13	CUSTOMER DRAWING		

LOC	DIST	REVISIONS			
P	LTN	DESCRIPTION	DATE	DWN	APVD
-	-	SEE SHEET 1	-	-	-



PANEL/PCB ASSEMBLY
SCALE 5:1



THIS DRAWING IS A CONTROLLED DOCUMENT. DIMENSIONING AND TOLERANCING PER ASME Y14.5M-2009.		DWN B. MATTHEWS 21FEB2014 CHK D. GORENC 21FEB2014	TE Connectivity	
DIMENSIONS: mm		APVD D. GORENC 21FEB2014		
TOLERANCES UNLESS OTHERWISE SPECIFIED:		PRODUCT SPEC	SIZE CAGE CODE DRAWING NO	RESTRICTED TO
0 PLC ±	1 PLC ±0.25	108-2462	A100779C=2274684	-
2 PLC ±0.13	3 PLC ±	APPLICATION SPEC	SCALE 5:1	SHEET 4 OF 4
4 PLC ±	ANGLES ±	114-13316	REV B	
MATERIAL -	FINISH -	WEIGHT -	CUSTOMER DRAWING	