



Chipsmall Limited consists of a professional team with an average of over 10 year of expertise in the distribution of electronic components. Based in Hongkong, we have already established firm and mutual-benefit business relationships with customers from,Europe,America and south Asia,supplying obsolete and hard-to-find components to meet their specific needs.

With the principle of "Quality Parts,Customers Priority,Honest Operation,and Considerate Service",our business mainly focus on the distribution of electronic components. Line cards we deal with include Microchip,ALPS,ROHM,Xilinx,Pulse,ON,Everlight and Freescale. Main products comprise IC,Modules,Potentiometer,IC Socket,Relay,Connector.Our parts cover such applications as commercial,industrial, and automotives areas.

We are looking forward to setting up business relationship with you and hope to provide you with the best service and solution. Let us make a better world for our industry!



Contact us

Tel: +86-755-8981 8866 Fax: +86-755-8427 6832

Email & Skype: info@chipsmall.com Web: www.chipsmall.com

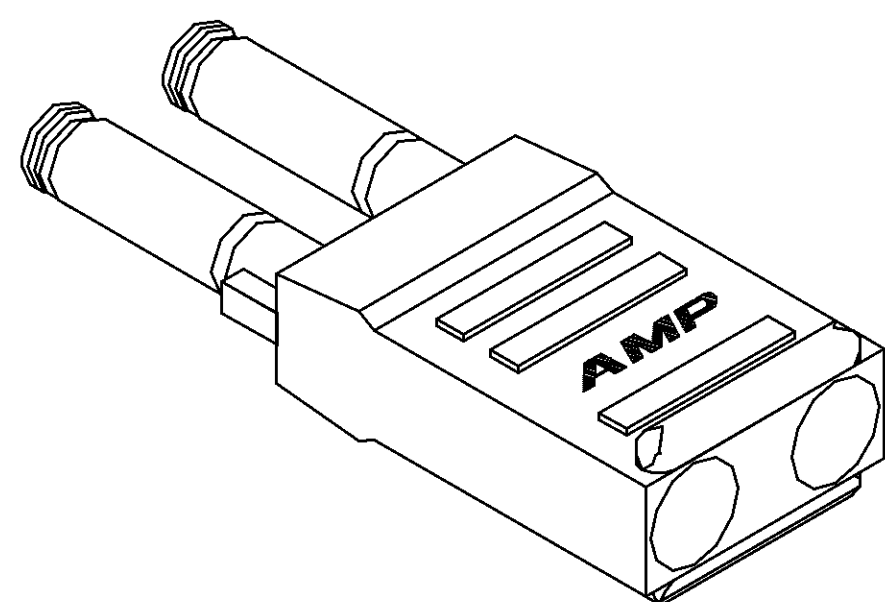
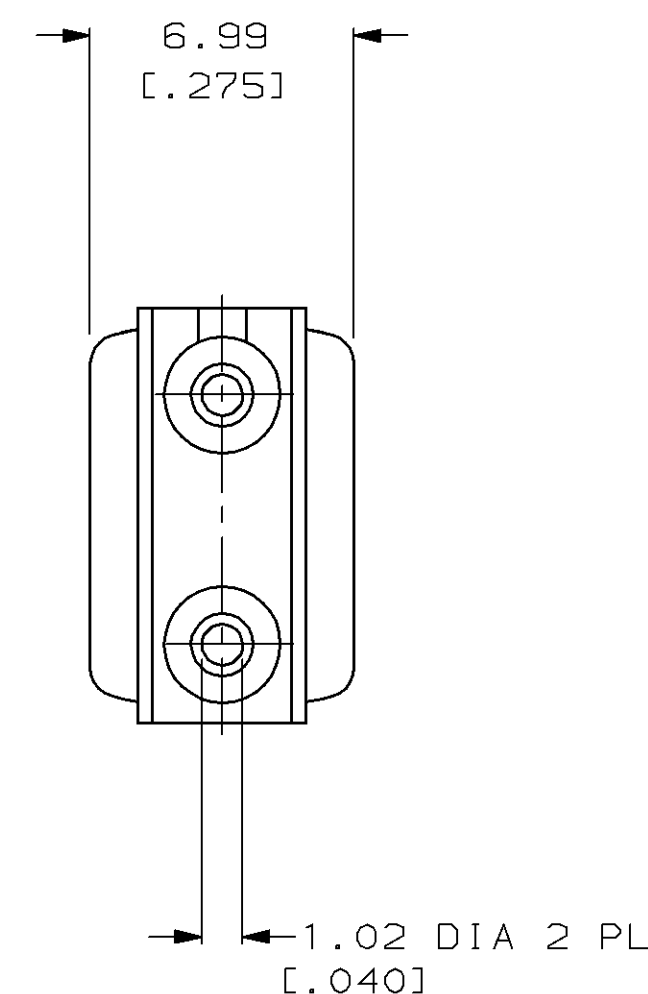
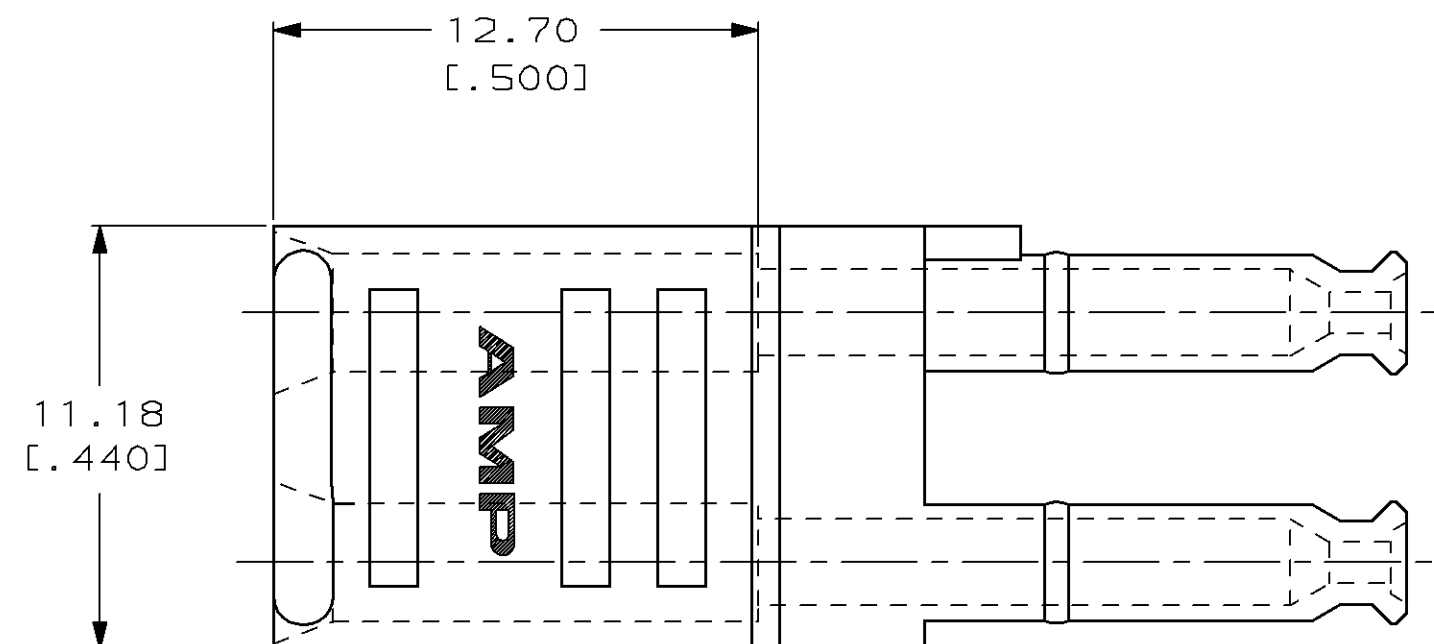
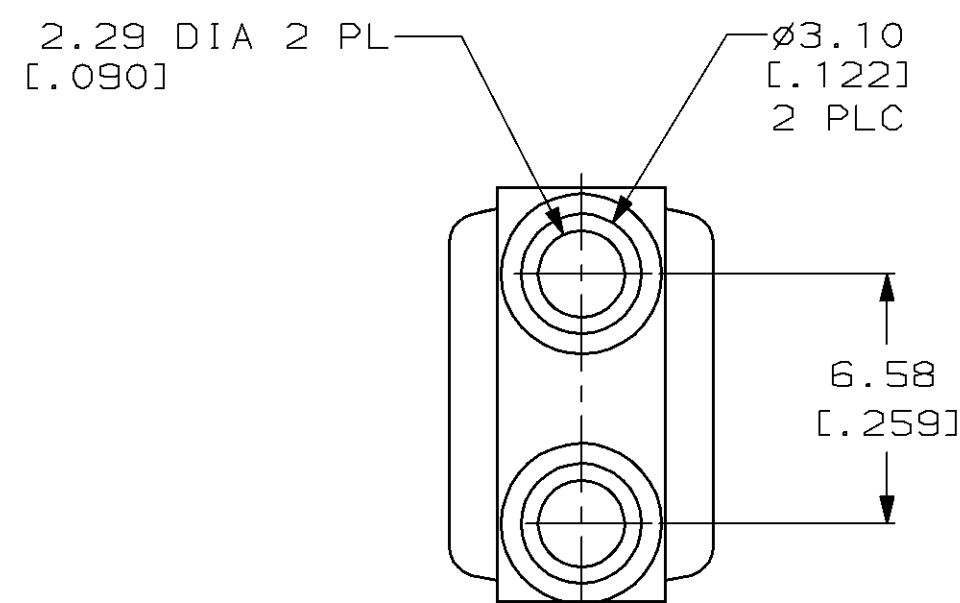
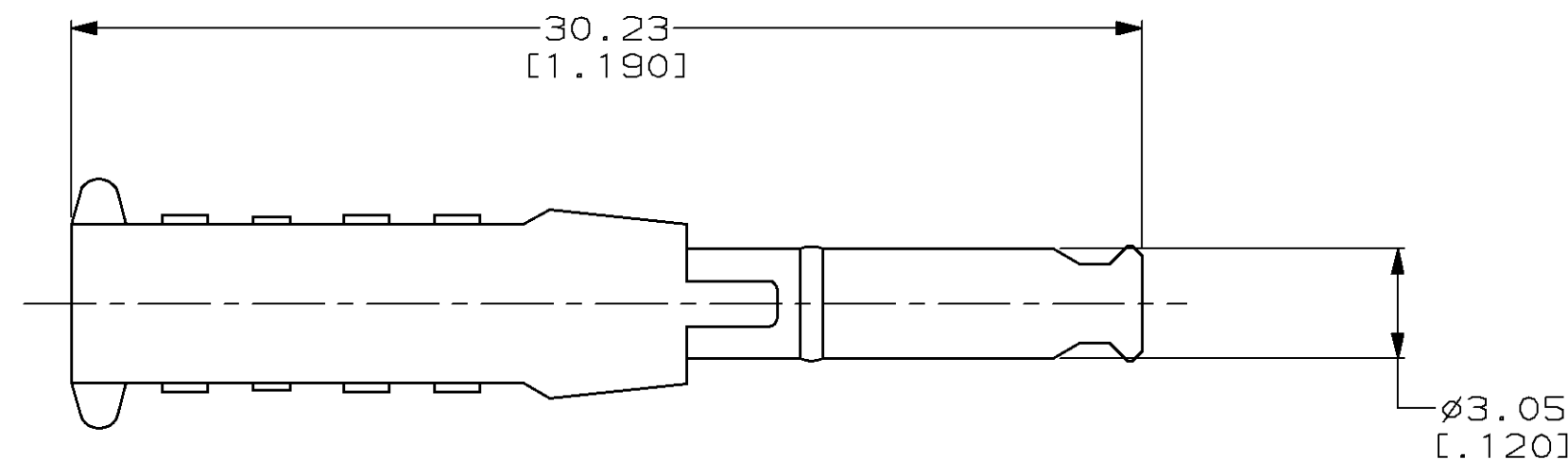
Address: A1208, Overseas Decoration Building, #122 Zhenhua RD., Futian, Shenzhen, China



THIS DRAWING IS UNPUBLISHED. RELEASED FOR PUBLICATION ,19 .
 © COPYRIGHT 19 BY AMP INCORPORATED, HARRISBURG, PA. ALL INTERNATIONAL RIGHTS RESERVED. AMP PRODUCTS MAY BE COVERED BY U.S. AND FOREIGN PATENTS AND/OR PATENTS PENDING.

LOC	DIST	P	F	ZONE	LTR	DESCRIPTION	DATE	APPROVED
CE	16				J	REV PER CE-2545	12-17-92	RH/GL
					K	REVISED PER 0A00-0049-99	19FEB99	KM

1. DIMENSIONS IN [] ARE IN INCHES



METRIC

228044-1
PART NO

UNLESS OTHERWISE SPECIFIED
DIMENSIONS ARE IN MM
TOLERANCES ON :
2 PL DEC ± .25 [.010]
3 PL DEC ± -
ANGLES ± -

MATERIAL
THERMOPLASTIC
COLOR: BLACK

FINISH
-

DR 9-15-86
J. ZEIDERS

CHK 9-15-86
W. MILLER

APPD 9-15-86
A. PLOTTS

APPD 9-15-86
K. MONROE

PRODUCT SPEC
108-45104

APPLICATION SPEC
IS SHEET 2974

WEIGHT
.90g

AMP AMP INCORPORATED
Harrisburg, Pa. 17105

NAME
PLUG, DUAL POSITION,
DNP, OPTIMATE

SIZE **C** FSCM NO 00779 DRAWING NO 228044

SCALE NTS SHEET 1 OF 1