



Chipsmall Limited consists of a professional team with an average of over 10 year of expertise in the distribution of electronic components. Based in Hongkong, we have already established firm and mutual-benefit business relationships with customers from,Europe,America and south Asia,supplying obsolete and hard-to-find components to meet their specific needs.

With the principle of “Quality Parts,Customers Priority,Honest Operation,and Considerate Service”,our business mainly focus on the distribution of electronic components. Line cards we deal with include Microchip,ALPS,ROHM,Xilinx,Pulse,ON,Everlight and Freescale. Main products comprise IC,Modules,Potentiometer,IC Socket,Relay,Connector.Our parts cover such applications as commercial,industrial, and automotives areas.

We are looking forward to setting up business relationship with you and hope to provide you with the best service and solution. Let us make a better world for our industry!



## Contact us

Tel: +86-755-8981 8866 Fax: +86-755-8427 6832

Email & Skype: info@chipsmall.com Web: www.chipsmall.com

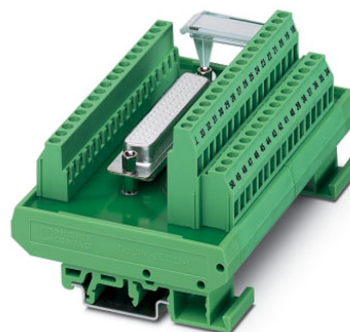
Address: A1208, Overseas Decoration Building, #122 Zhenhua RD., Futian, Shenzhen, China



## FLKM-D50 SUB/B

Order No.: 2281225

The illustration shows version FLKM-D37 SUB/S

<http://eshop.phoenixcontact.de/phoenix/treeViewClick.do?UID=2281225>VARIOFACE module, with screw connection and D-Subminiature  
socket strip, for mounting on NS 35/7.5 or NS 32, 50-pos.

| Commercial data          |                    |
|--------------------------|--------------------|
| EAN                      | 4017918054656      |
| Pack                     | 5 pcs.             |
| Customs tariff           | 85369010           |
| Weight/Piece             | 0.25508 KG         |
| Catalog page information | Page 225 (IF-2002) |

**Product notes**WEEE/RoHS-compliant since:  
08/10/2006

<http://www.download.phoenixcontact.com>  
Please note that the data given here has been taken from the online catalog. For comprehensive information and data, please refer to the user documentation. The General Terms and Conditions of Use apply to Internet downloads.

**Technical data**

| General data                              |  |
|---|--|
| Nominal voltage $U_N$                     | 125 V AC/DC                            |
| Max. current carrying capacity per branch | 2.5 A                                  |
|   | 1.5 A (with even load on all branches) |
| Number of positions                       | 50                                     |
| Width                                     | 112.5 mm                               |

|   |                         |
|---|-------------------------|
| Height                                  | 58.5 mm                 |
| Depth                                   | 77 mm                   |
| Ambient temperature (operation)         | -20 °C ... 50 °C        |
| Ambient temperature (storage/transport) | -20 °C ... 70 °C        |
| Test voltage                            | 800 V (50 Hz, 1 min.)   |
| Mounting position                       | Any                     |
| Standards/regulations                   | IEC 60664               |
|   | IEC 60664 A             |
|   | DIN VDE 0110            |
|   | DIN VDE 0160 (in parts) |
| Pollution degree                        | 2                       |
| Surge voltage category                  | II                      |

#### Connection data

|  |                     |
|--|---------------------|
| Connection 1                           | PCB connection      |
| Connection in acc. with standard       | IEC / EN            |
| Type of connection                     | Screw connection    |
| Conductor cross section solid min.     | 0.2 mm <sup>2</sup> |
| Conductor cross section solid max.     | 4 mm <sup>2</sup>   |
| Conductor cross section stranded min.  | 0.2 mm <sup>2</sup> |
| Conductor cross section stranded max.  | 2.5 mm <sup>2</sup> |
| Conductor cross section AWG/kcmil min. | 24                  |
| Conductor cross section AWG/kcmil max  | 12                  |
| Stripping length                       | 8 mm                |
| Screw thread                           | M3                  |
| Connection 2                           | D-SUB connection    |
| Type of connection                     | Pluggable           |
| Number of positions                    | 50                  |

#### Certificates / Approvals



Certification

CUL, GOST, UL

**CUL**

|                       |       |
|-----------------------|-------|
| Nominal voltage $U_N$ | 125 V |
| Nominal current $I_N$ | 2.5 A |
| AWG/kcmil             | 30-12 |

**UL**

|                       |       |
|-----------------------|-------|
| Nominal voltage $U_N$ | 125 V |
| Nominal current $I_N$ | 2.5 A |
| AWG/kcmil             | 30-12 |

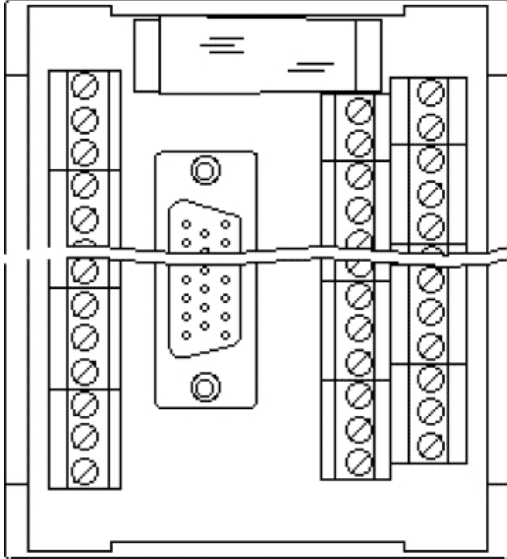
**Accessories**

| Item                   | Designation                       | Description   |
|------------------------|-----------------------------------|---|
| <b>Cable/conductor</b> |                                   |   |
| 2302434                | CABLE D-SUB-S-S-S/.../.../...     | Shielded round cable, assembled with two D-SUB male connectors, variable cable length               |
| 2302340                | CABLE D-SUB-S/.../.../...         | Shielded round cable, assembled with one D-SUB male and one female connector, variable cable length |
| 2302269                | CABLE-D50SUB/B/S/ 50/<br>KONFEK/S | Round shielded cable set, with 50-pos. D-SUB female and male connectors, cable length: 0.5 m        |
| 2302272                | CABLE-D50SUB/B/S/100/<br>KONFEK/S | Round shielded cable set, with 50-pos. D-SUB female and male connectors, cable length: 1 m          |
| 2302285                | CABLE-D50SUB/B/S/150/<br>KONFEK/S | Round shielded cable set, with 50-pos. D-SUB female and male connectors, cable length: 1.5 m        |
| 2302298                | CABLE-D50SUB/B/S/200/<br>KONFEK/S | Round shielded cable set, with 50-pos. D-SUB female and male connectors, cable length: 2 m          |
| 2302308                | CABLE-D50SUB/B/S/300/<br>KONFEK/S | Round shielded cable set, with 50-pos. D-SUB female and male connectors, cable length: 3 m          |
| 2302311                | CABLE-D50SUB/B/S/400/<br>KONFEK/S | Round shielded cable set, with 50-pos. D-SUB female and male connectors, cable length: 4 m          |
| 2302324                | CABLE-D50SUB/B/S/600/<br>KONFEK/S | Round shielded cable set, with 50-pos. D-SUB female and male connectors, cable length: 6 m          |



**Diagrams/Drawings**

Schematic diagram



**Address**

PHOENIX CONTACT Inc., USA  
586 Fulling Mill Road  
Middletown, PA 17057, USA  
Phone (800) 888-7388  
Fax (717) 944-1625  
<http://www.phoenixcon.com>



© 2010 Phoenix Contact  
Technical modifications reserved;