



Chipsmall Limited consists of a professional team with an average of over 10 year of expertise in the distribution of electronic components. Based in Hongkong, we have already established firm and mutual-benefit business relationships with customers from,Europe,America and south Asia,supplying obsolete and hard-to-find components to meet their specific needs.

With the principle of “Quality Parts,Customers Priority,Honest Operation,and Considerate Service”,our business mainly focus on the distribution of electronic components. Line cards we deal with include Microchip,ALPS,ROHM,Xilinx,Pulse,ON,Everlight and Freescale. Main products comprise IC,Modules,Potentiometer,IC Socket,Relay,Connector.Our parts cover such applications as commercial,industrial, and automotives areas.

We are looking forward to setting up business relationship with you and hope to provide you with the best service and solution. Let us make a better world for our industry!



## Contact us

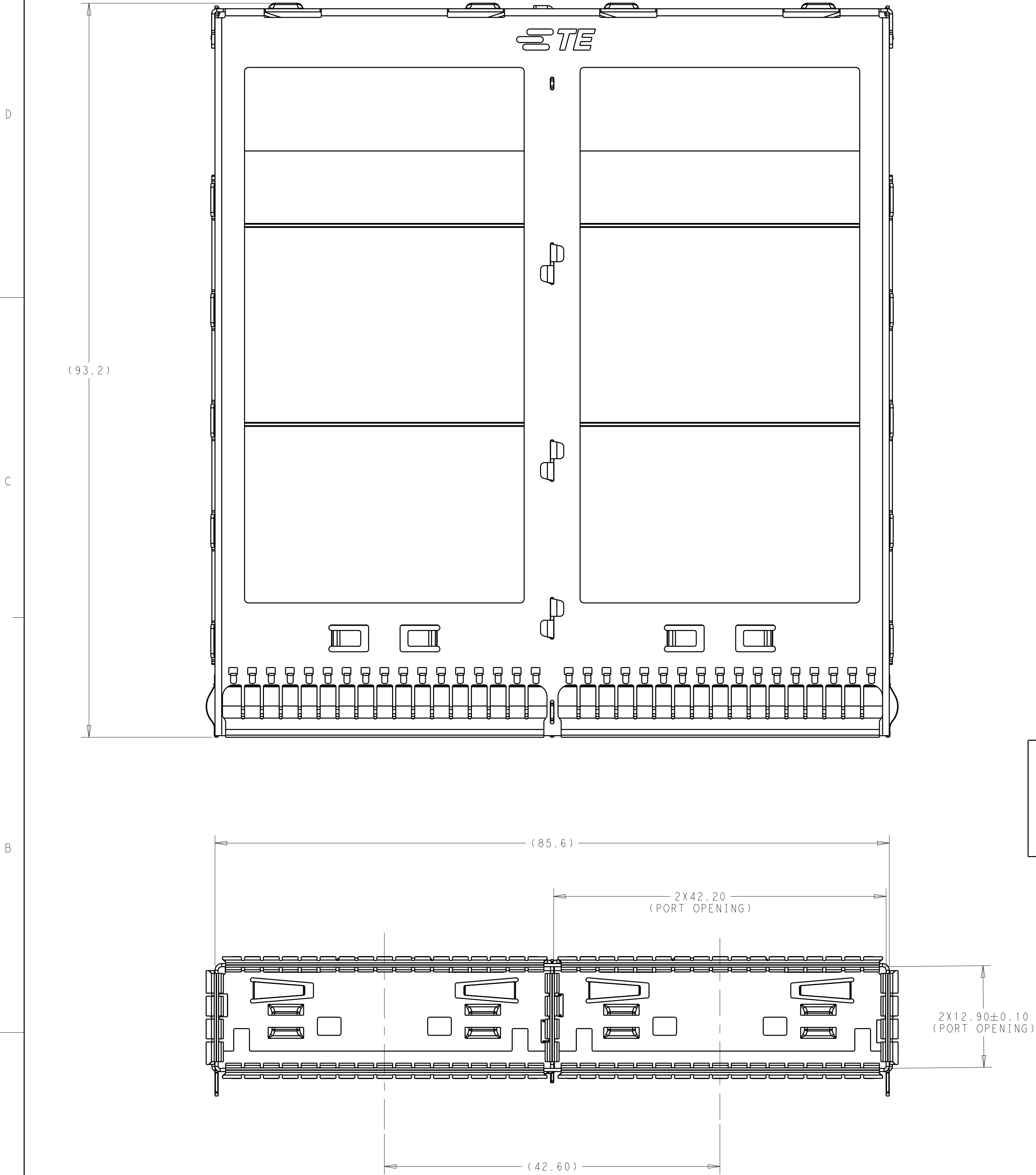
Tel: +86-755-8981 8866 Fax: +86-755-8427 6832

Email & Skype: [info@chipsmall.com](mailto:info@chipsmall.com) Web: [www.chipsmall.com](http://www.chipsmall.com)

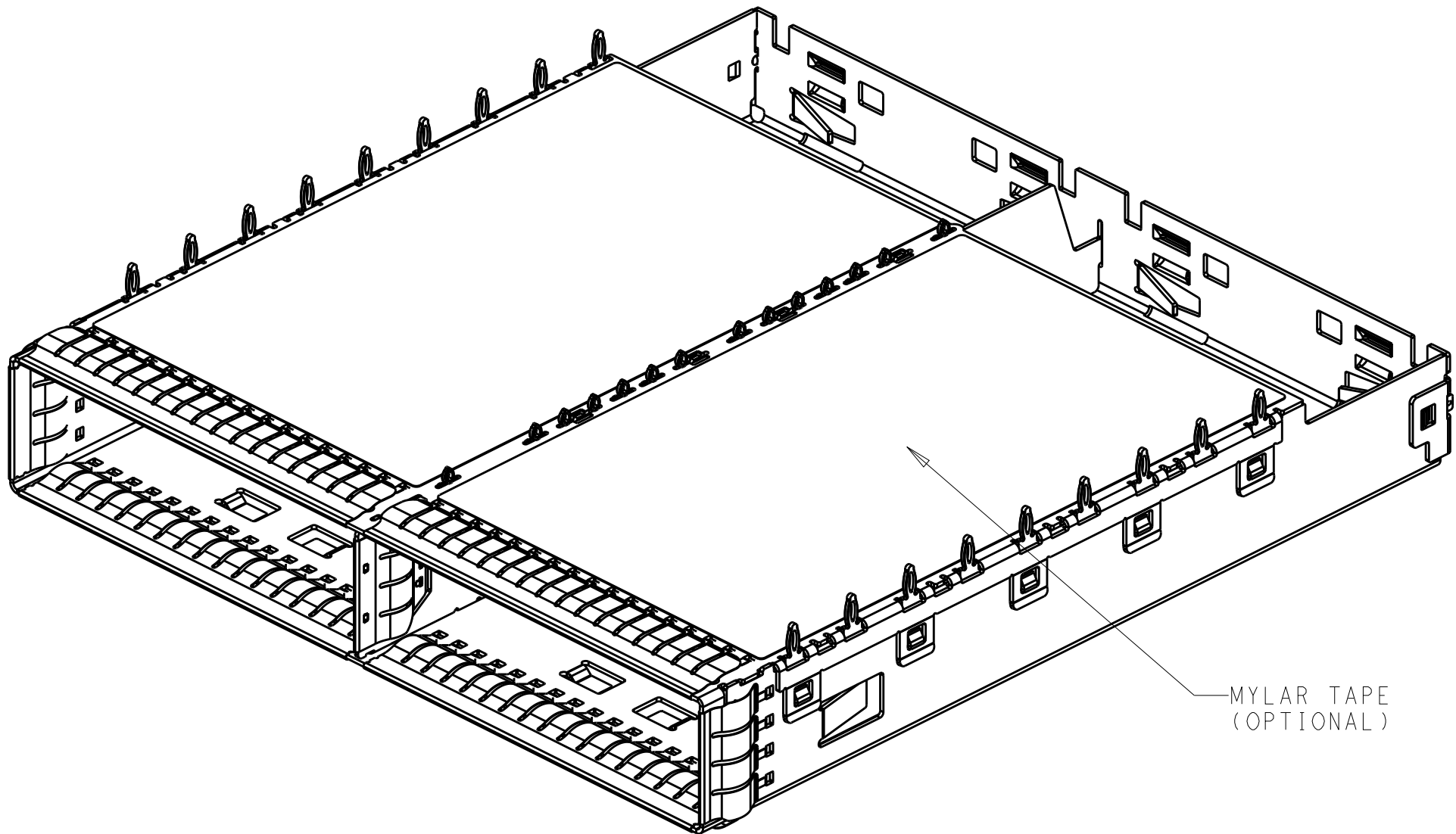
Address: A1208, Overseas Decoration Building, #122 Zhenhua RD., Futian, Shenzhen, China



REVISIONS					
P	LTR	DESCRIPTION	DATE	DWN	APVD
1		PRELIMINARY	21MAR2016	AD	SH
2		ADD PRAT NUMBER	23MAR2016	AD	SH
4		ADD NEW DASH NUMBER	18SEP2016	AD	SH
5		ADD REAR RIVETING	08FEB2017	AD	SH

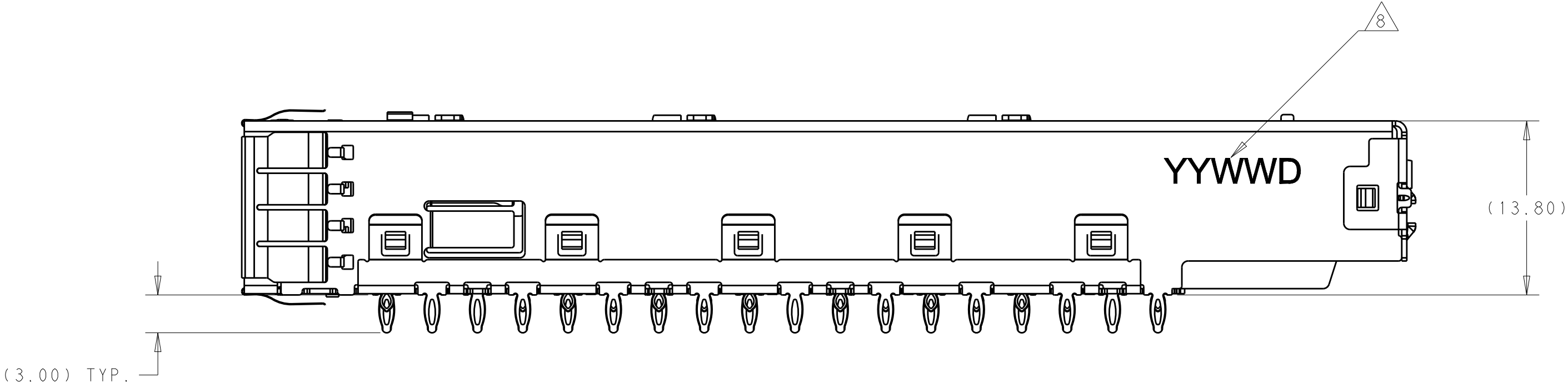


- 1 MATERIAL : CAGE :0.4MM THICK NICKEL SILVER ALLOY;  
EMI SPRING: COPPER ALLOY;
- 2 FINISH: EMI SPRING 1.27um NICKEL PALTING OVER ALL;  
3.MATES WITH CFP MSA COMPLIANT TRANSCEIVERS.
- 4 DATUM AND BASIC DIMENSION ESTABLISHED BY CUSTOMER.  
5.MINIMUM PC BOARD THICKNESS: SIGLE SIDE APPLICATIONS:2.0mm.  
BELLY TO BELLY APPLICAITON:3.0MM
- 6.PADS AND VIAS CHASSIS GROUND;
- 7:REFERENCE APPLICATION SPEC 114-32146, FOR  
RECOMMENDED DRILL HOLE DIAMETER AND PLATING THICKNESS.
- 8:DATE CODE MARKED AT APPROXIMATE AREA



THIS PRINT IS  
**PRELIMINARY**  
UNQUALIFIED PRODUCT  
CONTACT PRODUCT ENGINEERING  
BEFORE USING THIS PRINT

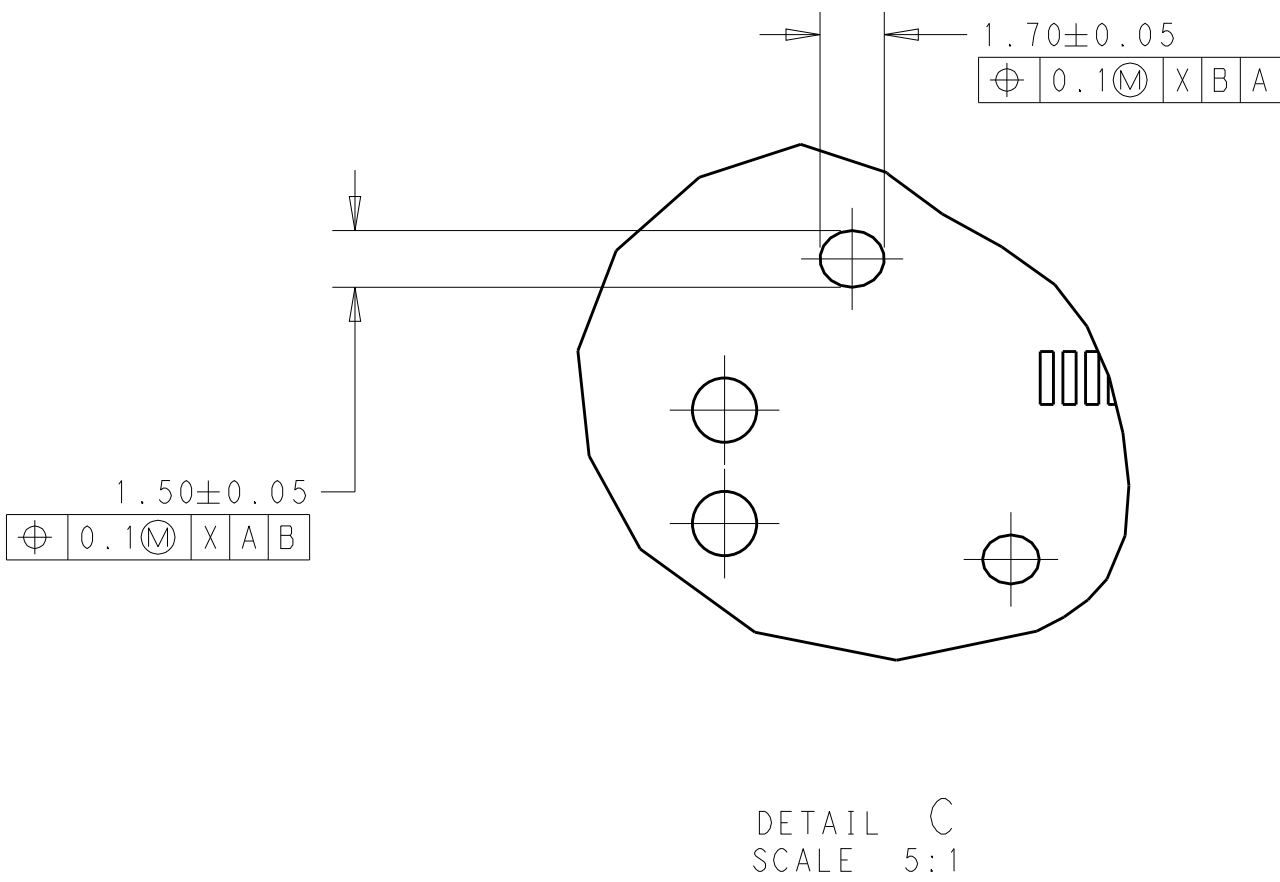
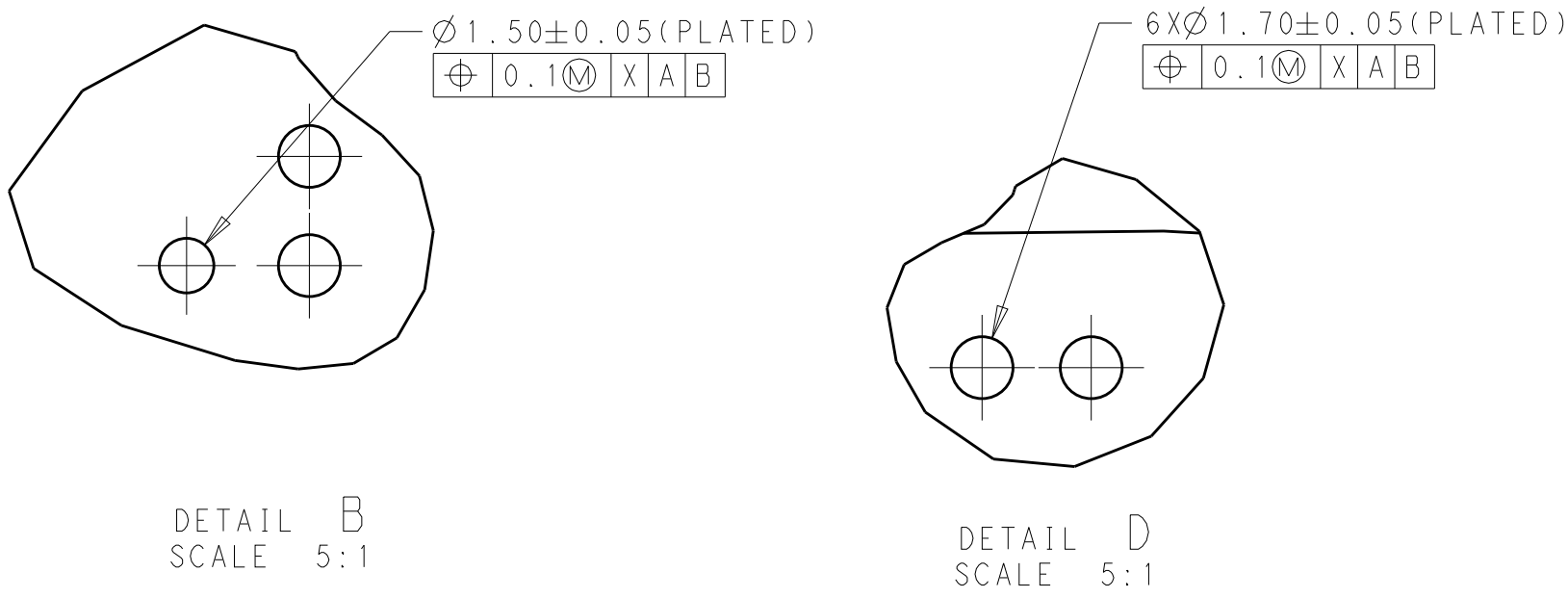
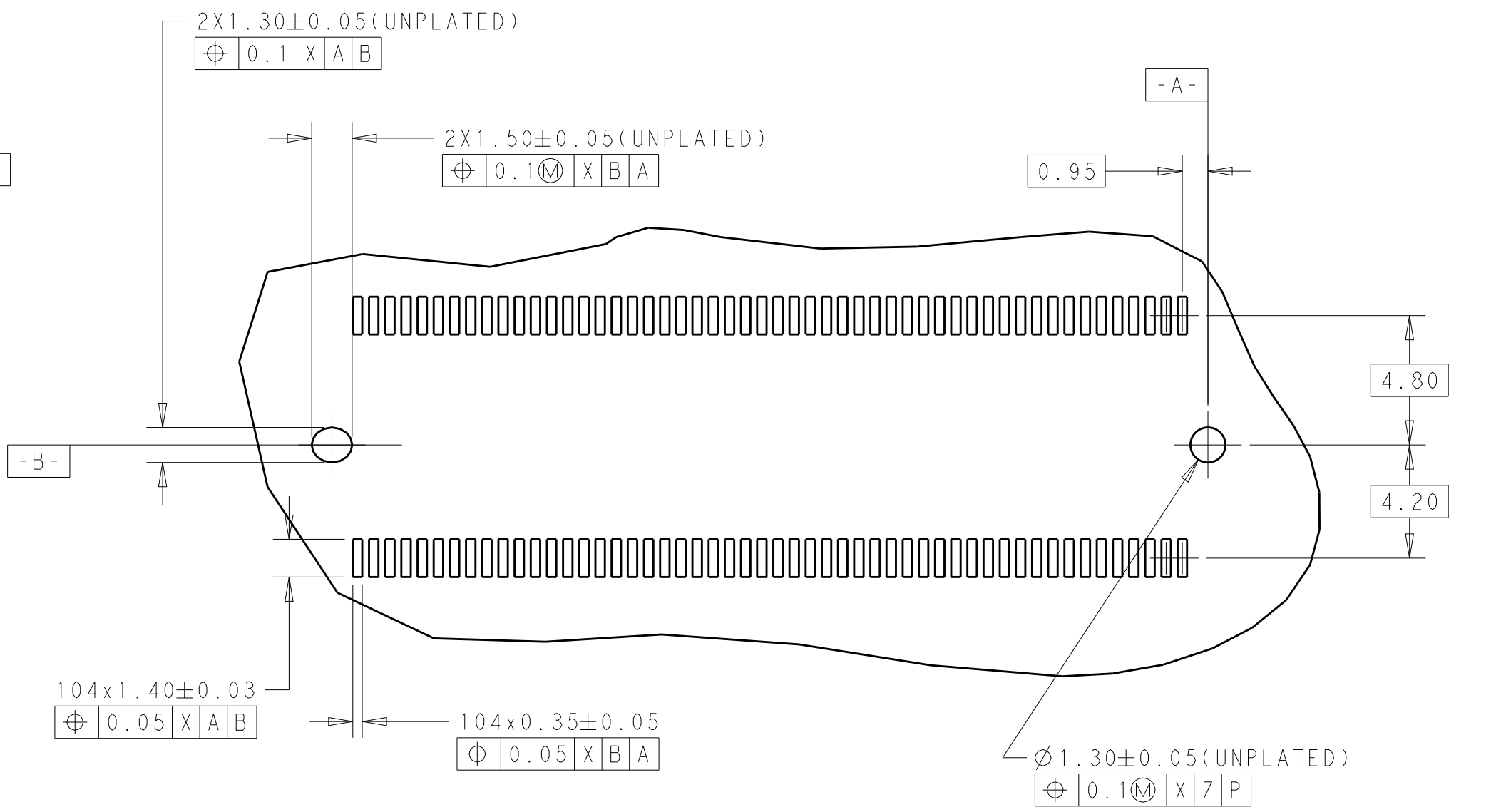
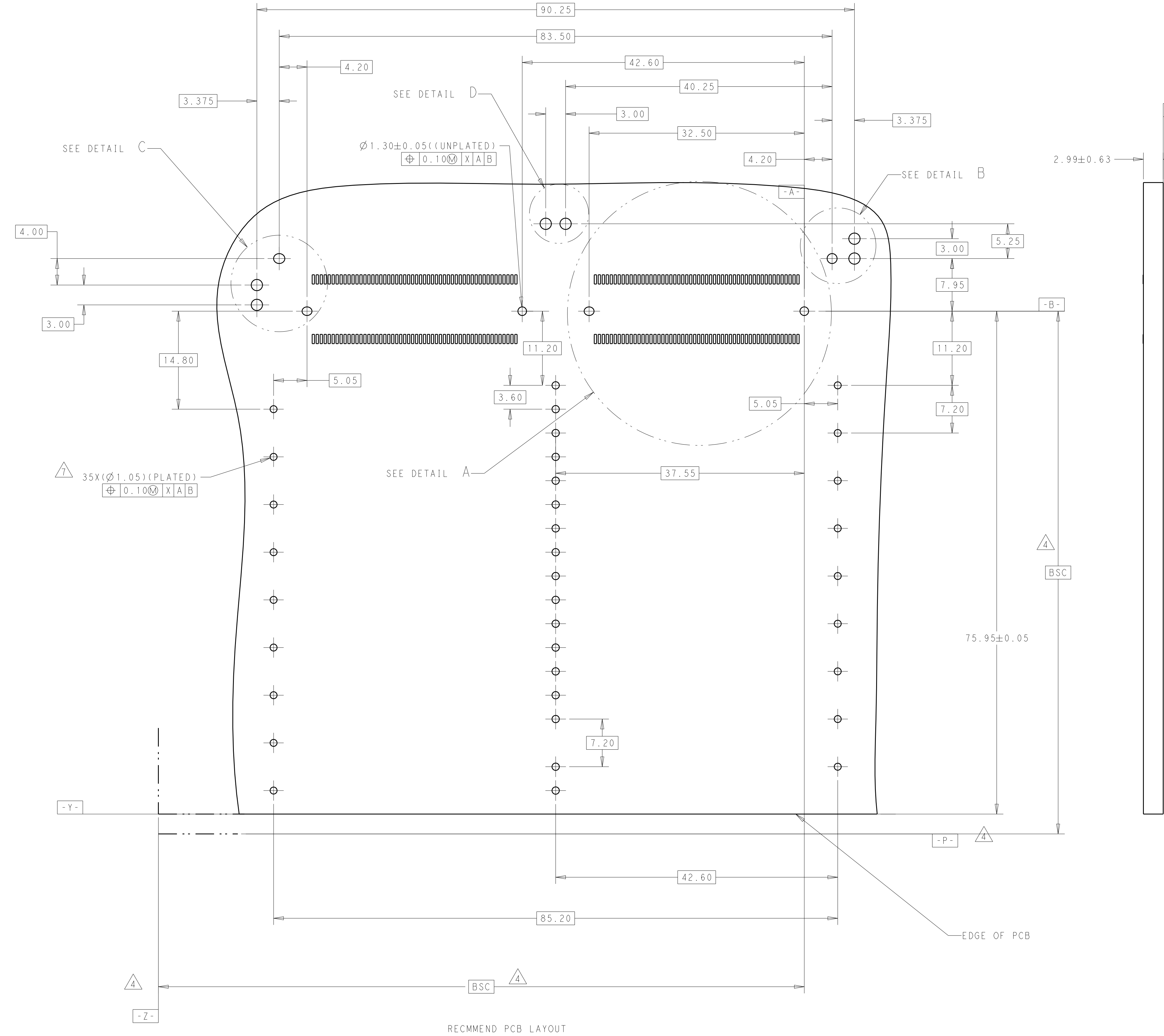
SCALE 2:1





WITH	2287076-4
WITHOUT	2287076-2
MYLAR TAPE	PART NUMBER

THIS DRAWING IS A CONTROLLED DOCUMENT.		DWN ANDY.XIE	21MAR2016	<b>STE</b> TE Connectivity	
DIMENSIONS:		CHK -	-		
mm		APVD SEAN.HAN	21MAR2016	NAME CAGE ASSEMBLY	
		PRODUCT SPEC		CFP2 1X2	
		108-32103		-	
		APPLICATION SPEC		-	
		114-32146		-	
MATERIAL		WEIGHT		RESTRICTED TO	
-		-		-	
-		CUSTOMER DRAWING		SCALE 1:1 SHEET 1 OF 4 REV 5	

LOC		DIST		REVISIONS					
GP	00	P	LTR	DESCRIPTION			DATE	DWN	APVD
		-		SEE SHEET 1			-	-	-

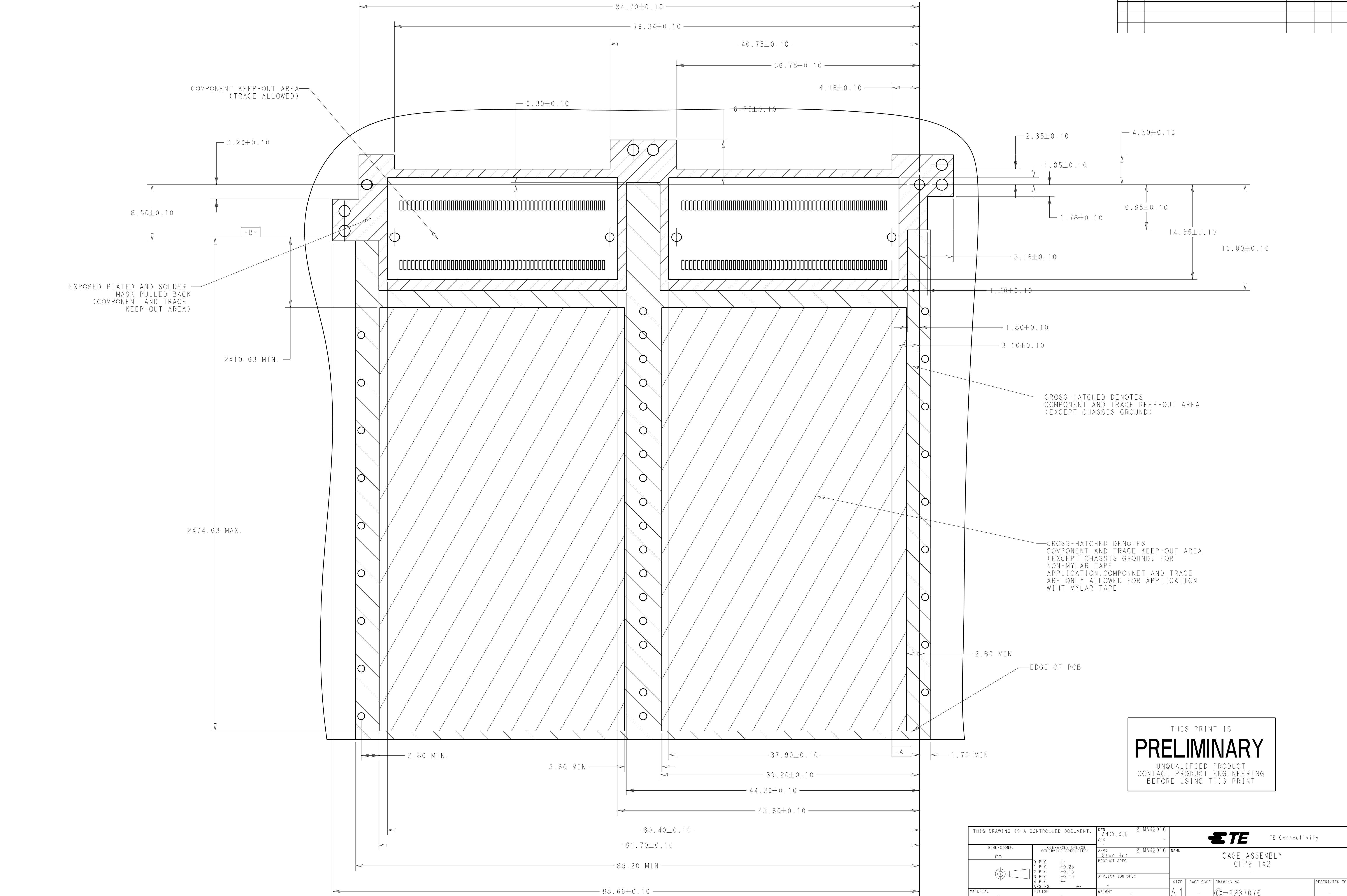


THIS PRINT IS  
**PRELIMINARY**  
UNQUALIFIED PRODUCT  
CONTACT PRODUCT ENGINEERING  
BEFORE USING THIS PRINT


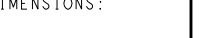
THIS DRAWING IS A CONTROLLED DOCUMENT.				DWN ANDY.XIE	Z1MAR2016	 TE Connectivity			
				CHK -					
DIMENSIONS:		TOLERANCES UNLESS OTHERWISE SPECIFIED:		APVD Sean Han	Z1MAR2016	NAME		CAGE ASSEMBLY CFP2 1X2	
mm		0 PLC ±0.25 1 PLC ±0.15 2 PLC ±0.10 3 PLC ±0.10 4 PLC ±0.10 ANGLES ±°		PRODUCT SPEC -		APPLICATION SPEC -		SIZE CAGE CODE DRAWING NO	
								RESTRICTED TO	
MATERIAL		FINISH		WEIGHT		A1 -		C=2287076	
Customer Drawing						SCALE 1:1		SHEET 2 OF 4	
								REV 5	



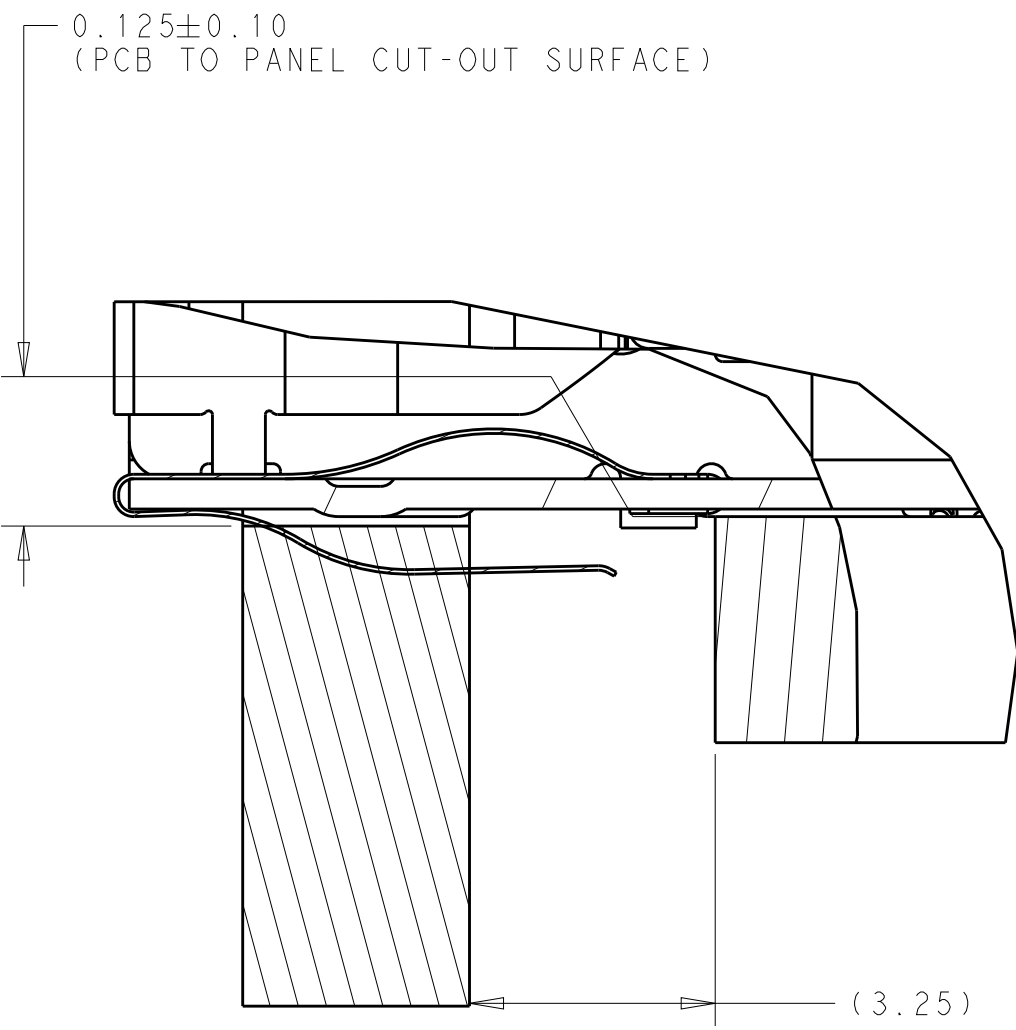
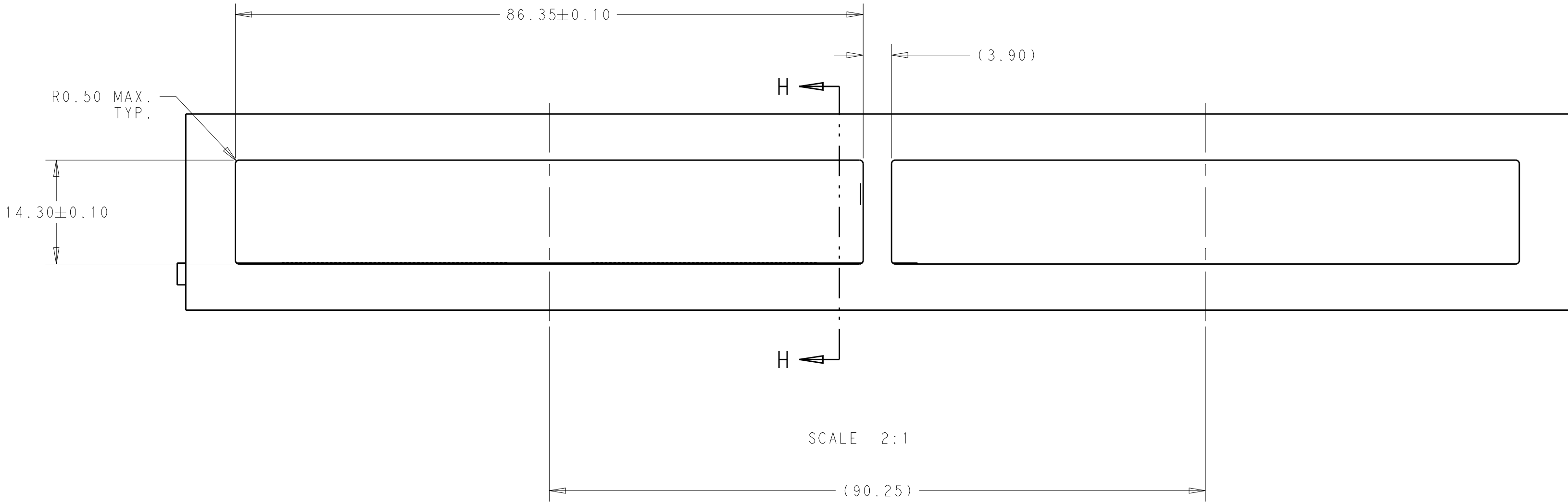
LOC		DIST		REVISIONS				
GP		00		P	LTR	DESCRIPTION		DATE
				-		SEE SHEET 1		-



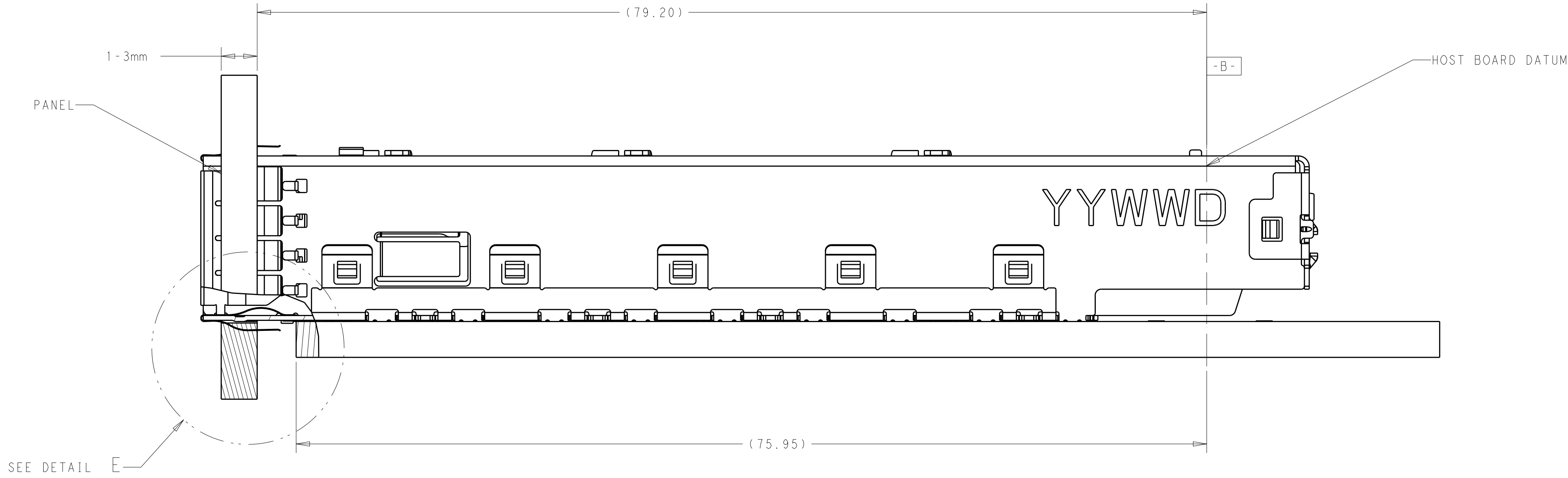
THIS PRINT IS  
**PRELIMINARY**  
UNQUALIFIED PRODUCT  
CONTACT PRODUCT ENGINEERING  
BEFORE USING THIS PRINT

THIS DRAWING IS A CONTROLLED DOCUMENT.				DWN	ANDY.XIE	Z1MAR2016	 TE Connectivity				
				CHK	-	-					
DIMENSIONS:		TOLERANCES UNLESS OTHERWISE SPECIFIED:		APVD	Scop.Hao	Z1MAR2016	NAME		CAGE ASSEMBLY		
mm		0 PLC ±0.25		PRODUCT SPEC		APPLICATION SPEC		CAGE CODE		DRAWING NO	
		1 PLC ±0.15		-				A1		-	
		2 PLC ±0.10		-				-		-	
		3 PLC ±0.10		-				-		-	
		4 PLC ±0.10		-				SCALE		1:1	
		ANGLES ±0.10						SHEET		3 OF 4	
		FINISH						REV		5	
MATERIAL				WEIGHT							
-		-		-							
Customer Drawing											

LOC		DIST		REVISIONS				
GP	00	P	LTR	DESCRIPTION	DATE	DWN	APVD	
		-	-	SEE SHEET 1	-	-	-	





DETAIL E  
SCALE 10:1



SECTION H-H  
SCALE 4:1

THIS PRINT IS  
**PRELIMINARY**  
UNQUALIFIED PRODUCT  
CONTACT PRODUCT ENGINEERING  
BEFORE USING THIS PRINT

THIS DRAWING IS A CONTROLLED DOCUMENT.				DWN	ANDY.XIE		Z1MAR2016	 TE Connectivity			
				CHK	-		-				
DIMENSIONS:  mm		TOLERANCES UNLESS OTHERWISE SPECIFIED:		APVD	SCOTT.HAO		Z1MAR2016	NAME		CAGE ASSEMBLY CFP2 1X2 -	
				PRODUCT SPEC		-		-			
		0 PLC ±0.25 1 PLC ±0.15 2 PLC ±0.15 3 PLC ±0.10 4 PLC ±0.10 ANGLES ±°		APPLICATION SPEC		-		-		SIZE	
				WEIGHT		-		-			
MATERIAL		FINISH		-		-		A1		C=2287076	
Customer Drawing				SCALE		1:1		SHEET		4 OF 4	
										REV 5	