



Chipsmall Limited consists of a professional team with an average of over 10 year of expertise in the distribution of electronic components. Based in Hongkong, we have already established firm and mutual-benefit business relationships with customers from,Europe,America and south Asia,supplying obsolete and hard-to-find components to meet their specific needs.

With the principle of “Quality Parts,Customers Priority,Honest Operation,and Considerate Service”,our business mainly focus on the distribution of electronic components. Line cards we deal with include Microchip,ALPS,ROHM,Xilinx,Pulse,ON,Everlight and Freescale. Main products comprise IC,Modules,Potentiometer,IC Socket,Relay,Connector.Our parts cover such applications as commercial,industrial, and automotives areas.

We are looking forward to setting up business relationship with you and hope to provide you with the best service and solution. Let us make a better world for our industry!



## Contact us

Tel: +86-755-8981 8866 Fax: +86-755-8427 6832

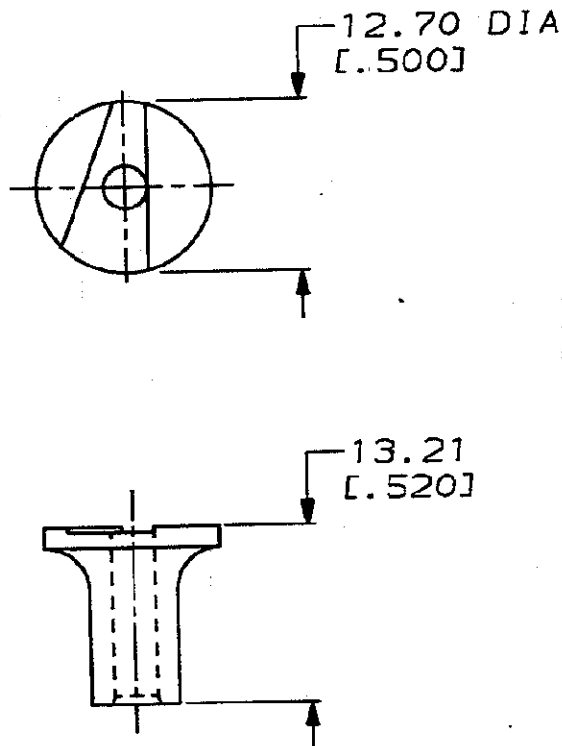
Email & Skype: [info@chipsmall.com](mailto:info@chipsmall.com) Web: [www.chipsmall.com](http://www.chipsmall.com)

Address: A1208, Overseas Decoration Building, #122 Zhenhua RD., Futian, Shenzhen, China



DRAWING MADE IN THIRD ANGLE PROJECTION

LOC		DIST		REVISIONS				
CE	16	P	F	LTR	DESCRIPTION	DATE	APPROVED	
				✓ B	REDRAW AND REV PER CE-1199	1-12-88	CE/PLM 1-15-88	



1. DIMENSIONS IN [ ] ARE IN INCHES

METRIC

228837-1

PART  
NUMBER

DO NOT SCALE PRINT.  
UNLESS SPECIFIED  
DIMENSIONS IN MM  
TOLERANCES ON:  
2 PLC DEC ± .25 (.010)  
3 PLC DEC ± \_\_\_\_\_  
ANGLES ± \_\_\_\_\_

MATERIAL  
STAINLESS  
STEEL

FINISH \_\_\_\_\_

DR C. Coughlin 1-12-88

CHK J. J. 1-14-88

APPROVED Robert J. Maguire 1-15-88

APPROVED Ron J. Thompson 1-15-88

PRODUCT SPEC \_\_\_\_\_

APPLICATION SPEC \_\_\_\_\_

WEIGHT \_\_\_\_\_

**AMP**AMP INCORPORATED  
Harrisburg, Pa. 17105

NAME

CUTTING FIXTURE,  
DNP, OPTIMATE

SIZE

**A**

FSCM NO

00779

DRAWING NO

228837

SCALE

NTS

SHEET

1 OF 1