



Chipsmall Limited consists of a professional team with an average of over 10 year of expertise in the distribution of electronic components. Based in Hongkong, we have already established firm and mutual-benefit business relationships with customers from,Europe,America and south Asia,supplying obsolete and hard-to-find components to meet their specific needs.

With the principle of "Quality Parts,Customers Priority,Honest Operation,and Considerate Service",our business mainly focus on the distribution of electronic components. Line cards we deal with include Microchip,ALPS,ROHM,Xilinx,Pulse,ON,Everlight and Freescale. Main products comprise IC,Modules,Potentiometer,IC Socket,Relay,Connector.Our parts cover such applications as commercial,industrial, and automotives areas.

We are looking forward to setting up business relationship with you and hope to provide you with the best service and solution. Let us make a better world for our industry!



## Contact us

Tel: +86-755-8981 8866 Fax: +86-755-8427 6832

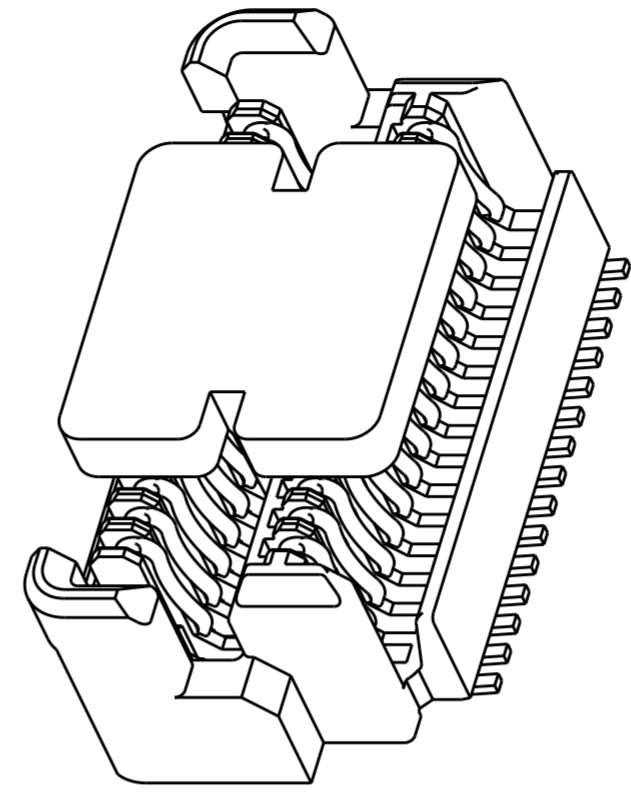
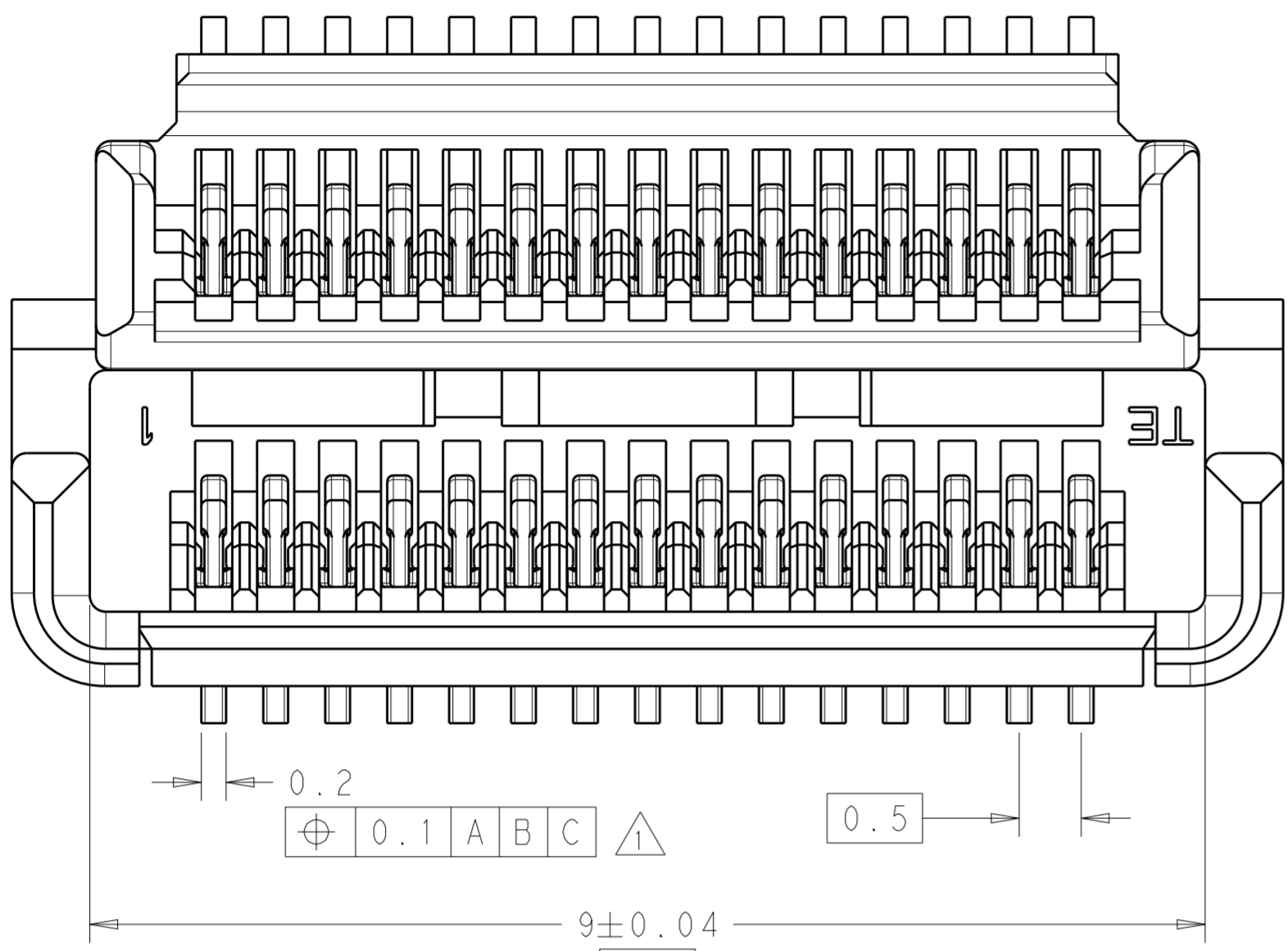
Email & Skype: info@chipsmall.com Web: www.chipsmall.com

Address: A1208, Overseas Decoration Building, #122 Zhenhua RD., Futian, Shenzhen, China



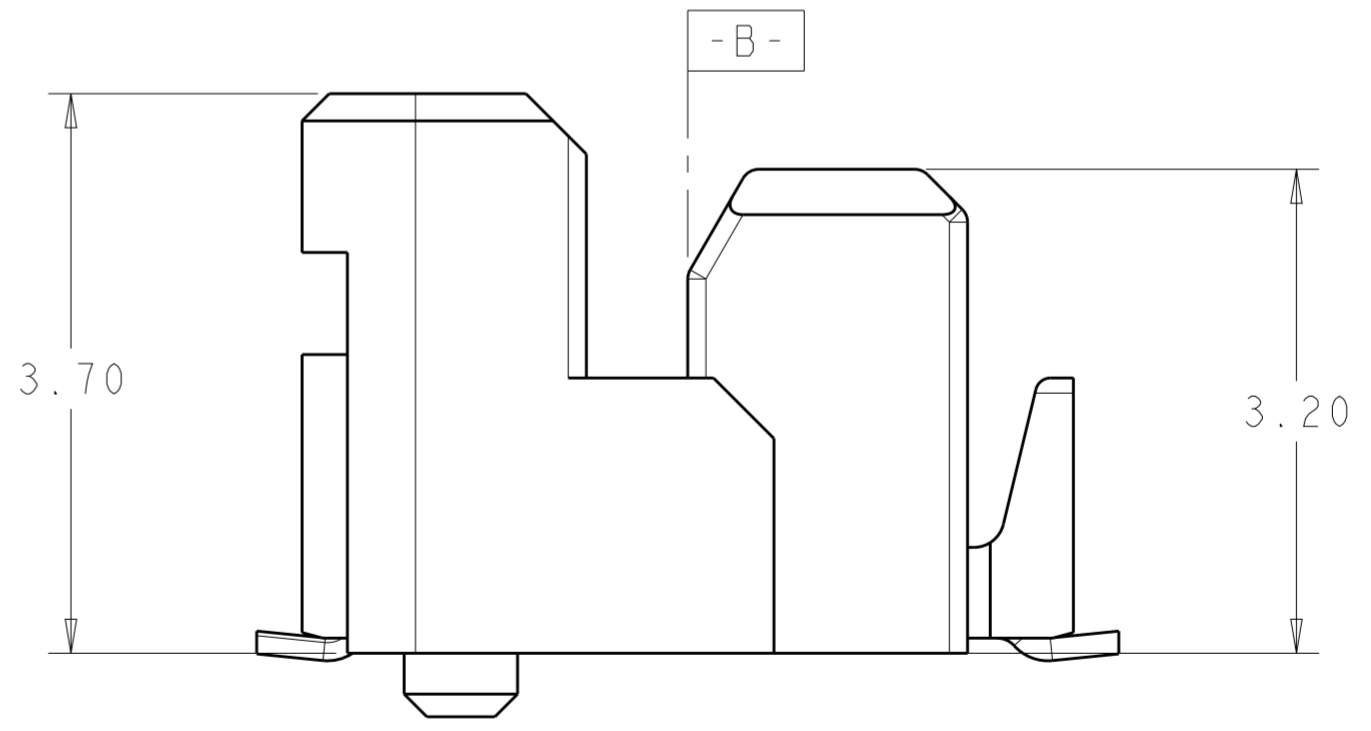
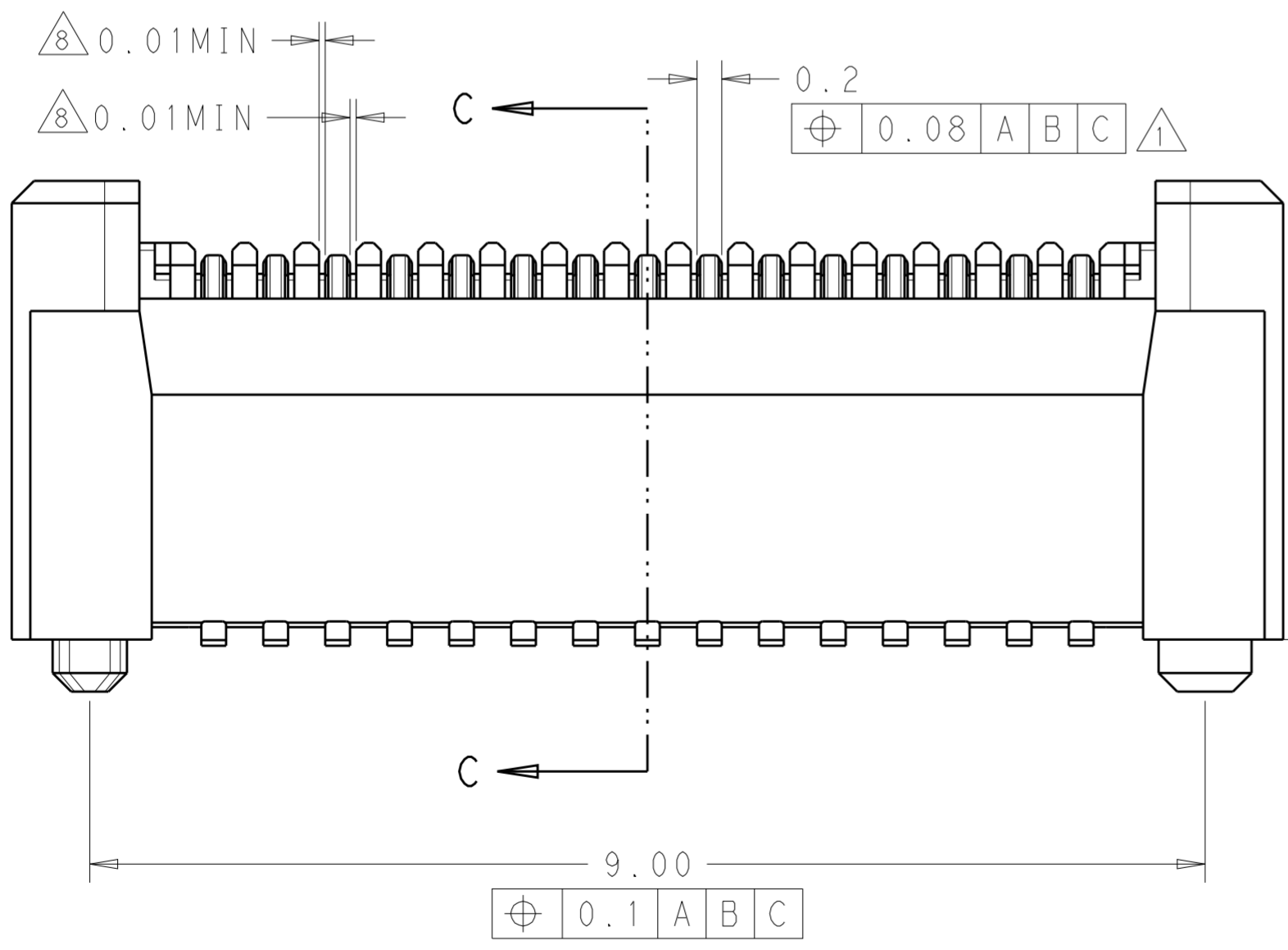
THIS DRAWING IS UNPUBLISHED. RELEASED FOR PUBLICATION  
 © COPYRIGHT copyright.d8Te- ALL RIGHTS RESERVED.

| REVISIONS |     |             |           |     |      |
|-----------|-----|-------------|-----------|-----|------|
| P         | LTR | DESCRIPTION | DATE      | DWN | APVD |
| A         |     | NEW RELEASE | 18MAY2017 | B.J | S.Y  |
|           |     |             |           |     |      |
|           |     |             |           |     |      |



NOTES:

- 1. MATERIALS:  
 HOUSING: L.C.P (HIGH TEMP THERMOPLASTIC)  
 UL 94V-0  
 CAP: L.C.P (HIGH TEMP THERMOPLASTIC)  
 UL 94V-0  
 CONTACT: COPPER ALLOY
- 2. FINISH:  
 ENGAGEMENT AREA: 0.00038MM MIN GOLD  
 SOLDERING AREA: 0.00005MM MIN GOLD  
 UNDERPLATING: 0.00127MM MIN NICKEL  
 ALL OVER

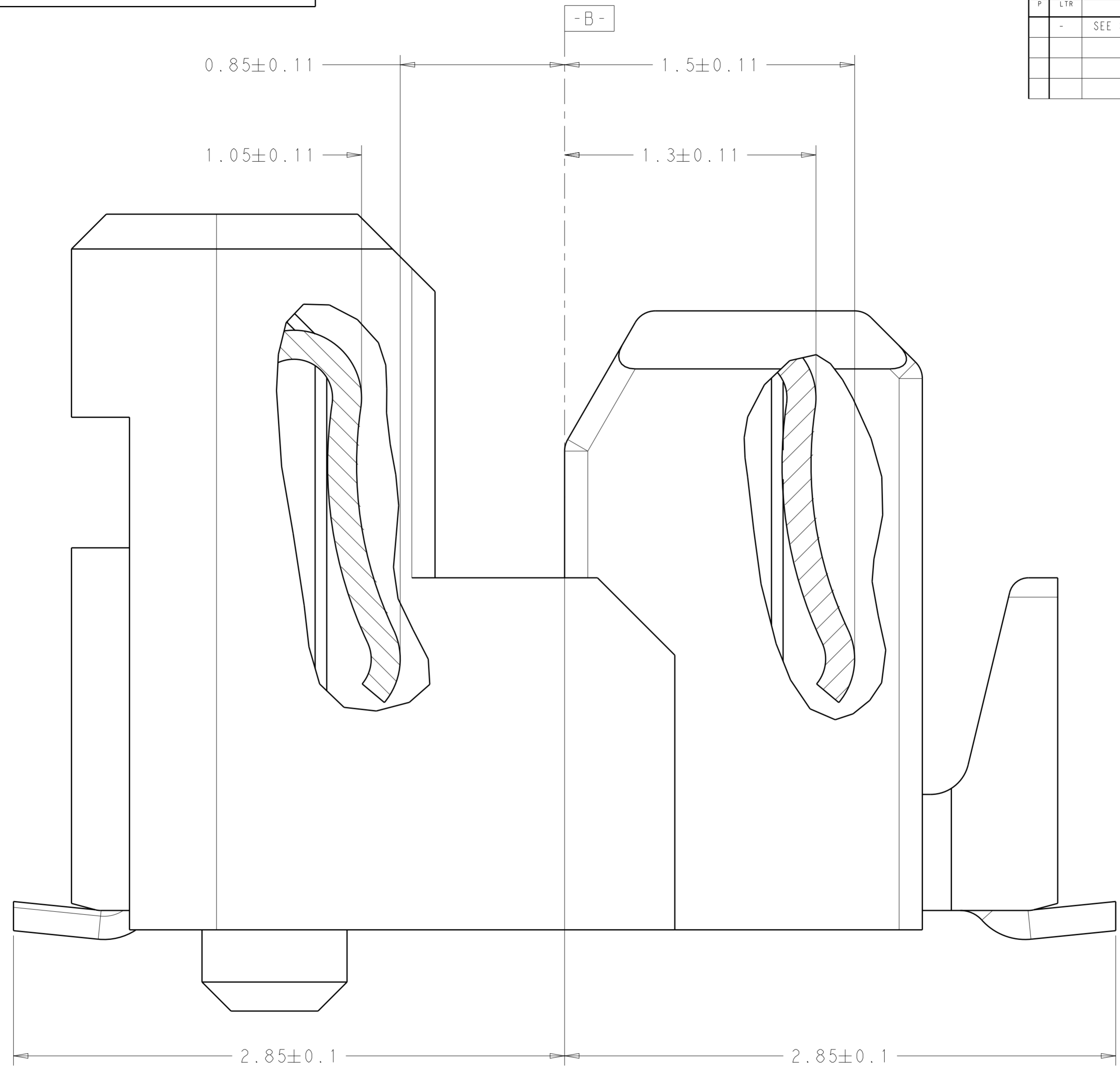


2291283-1 WITHOUT CAP

|  |               |                          |                  |           |                         |  |                 |          |
|--|---------------|--------------------------|------------------|-----------|-------------------------|--|-----------------|----------|
| THIS DRAWING IS A CONTROLLED DOCUMENT. |               | DWN<br>B.J<br>18MAY2017  | TE Connectivity  |           |                         |  |                 |          |
| DIMENSIONS:                            |               | CHK<br>A.S<br>18MAY2017  |                  |           |                         | NAME<br>0.5MM FPH BTB CONN.<br>30POS 4MM MATING HEIGHT |                 |          |
| mm                                     |               | APVD<br>S.Y<br>18MAY2017 |                  |           |                         | APPLICATION SPEC                                       |                 |          |
| TOLERANCES UNLESS OTHERWISE SPECIFIED: |               | PRODUCT SPEC             |                  |           |                         | RESTRICTED TO  |                 |          |
| 0 PLC ±                                | 1 PLC ±0.2    | APPLICATION SPEC         | SIZE<br>A2       | CAGE CODE | DRAWING NO<br>C-2291283 | SCALE<br>10:1  | SHEET<br>1 OF 5 | REV<br>A |
| 2 PLC ±0.08                            | 3 PLC ±       | WEIGHT                   | CUSTOMER DRAWING |           |                         |  |                 |          |
| 4 PLC ±                                | ANGLES ±      |                          |                  |           |                         |  |                 |          |
| FINISH                                 | finish_spec_2 |                          |                  |           |                         |  |                 |          |

THIS DRAWING IS UNPUBLISHED. RELEASED FOR PUBLICATION  
 © COPYRIGHT copyright.d8te- ALL RIGHTS RESERVED.

| REVISIONS |     |             |      |      |
|-----------|-----|-------------|------|------|
| P         | LTR | DESCRIPTION | DATE | APVD |
| -         |     | SEE SHEET 1 | -    | -    |
|           |     |             |      |      |
|           |     |             |      |      |



SECTION C-C  
 SCALE 60:1

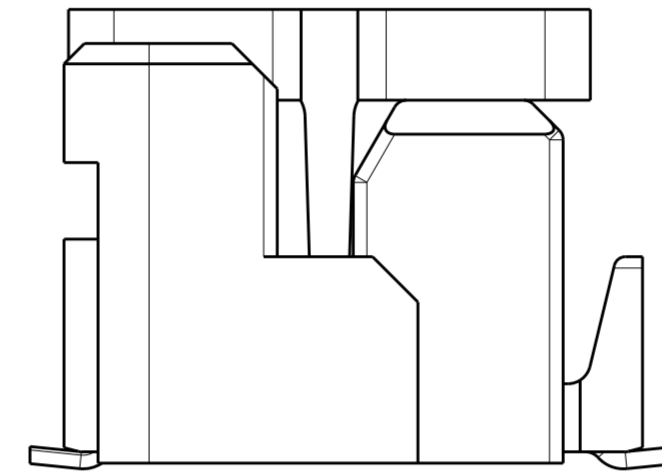
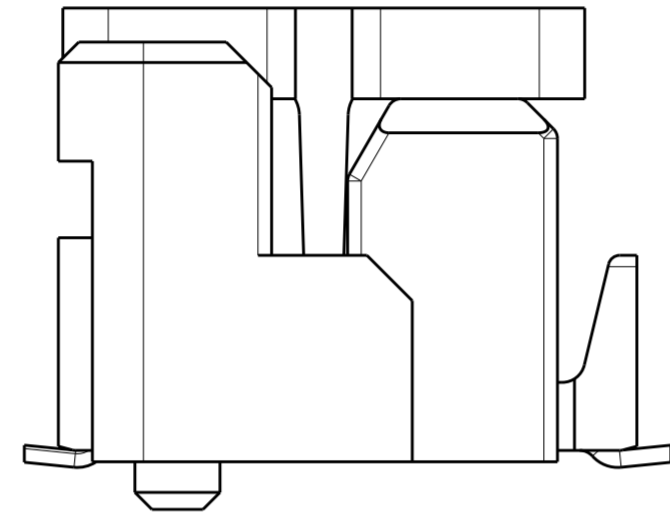
|  |  |               |           |  |
|--|--|---------------|-----------|--|
| THIS DRAWING IS A CONTROLLED DOCUMENT. |  | DWN<br>B. J.  | 18MAY2017 | <br>TE Connectivity                            |
|  |  | CHK<br>A. S.  | 18MAY2017 |  |
|  |  | APVD<br>S. Y. | 18MAY2017 |  |
|  |  | PRODUCT SPEC  |           |  |
| DIMENSIONS:                            |  |               |           | NAME   |
| mm                                     | TOLERANCES UNLESS OTHERWISE SPECIFIED: |               |           | 0.5MM FPH BTB CONN.<br>30POS 4MM MATING HEIGHT |
|  | 0 PLC ±-                               |               |           | SIZE   |
|  | 1 PLC ±0.2                             |               |           | A2   |
|  | 2 PLC ±0.08                            |               |           | CAGE CODE                                      |
|  | 3 PLC ±-                               |               |           | C-2291283                                      |
|  | 4 PLC ±-                               |               |           | DRAWING NO                                     |
|  | ANGLES ±-                              |               |           | RESTRICTED TO                                  |
|  | FINISH ±-                              |               |           | -  |
| MATERIAL                               | finish_spec_2                          |               |           | SCALE  |
|  |  |               |           | 10:1   |
|  |  |               |           | SHEET  |
|  |  |               |           | 2 OF 5   |
|  |  |               |           | REV  |
|  |  |               |           | A  |

THIS DRAWING IS UNPUBLISHED. RELEASED FOR PUBLICATION  
 © COPYRIGHT copyright.d8te- ALL RIGHTS RESERVED.

| REVISIONS |     |             |      |      |
|-----------|-----|-------------|------|------|
| P         | LTR | DESCRIPTION | DATE | APVD |
| -         |     | SEE SHEET 1 | -    | -    |
|           |     |             |      |      |
|           |     |             |      |      |

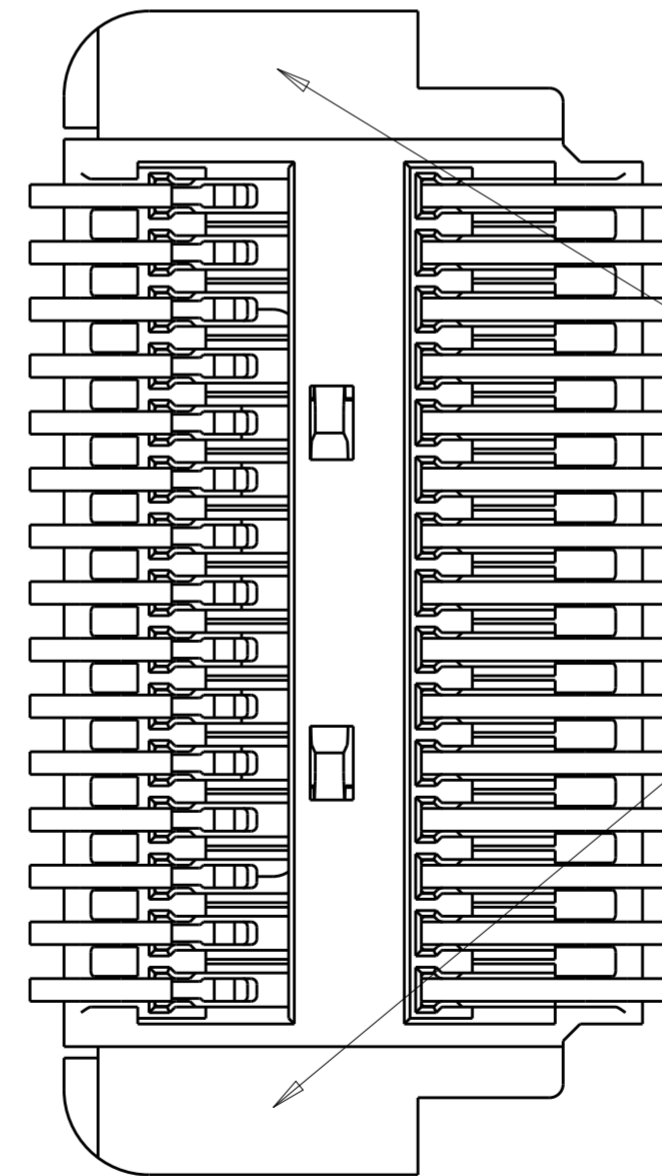
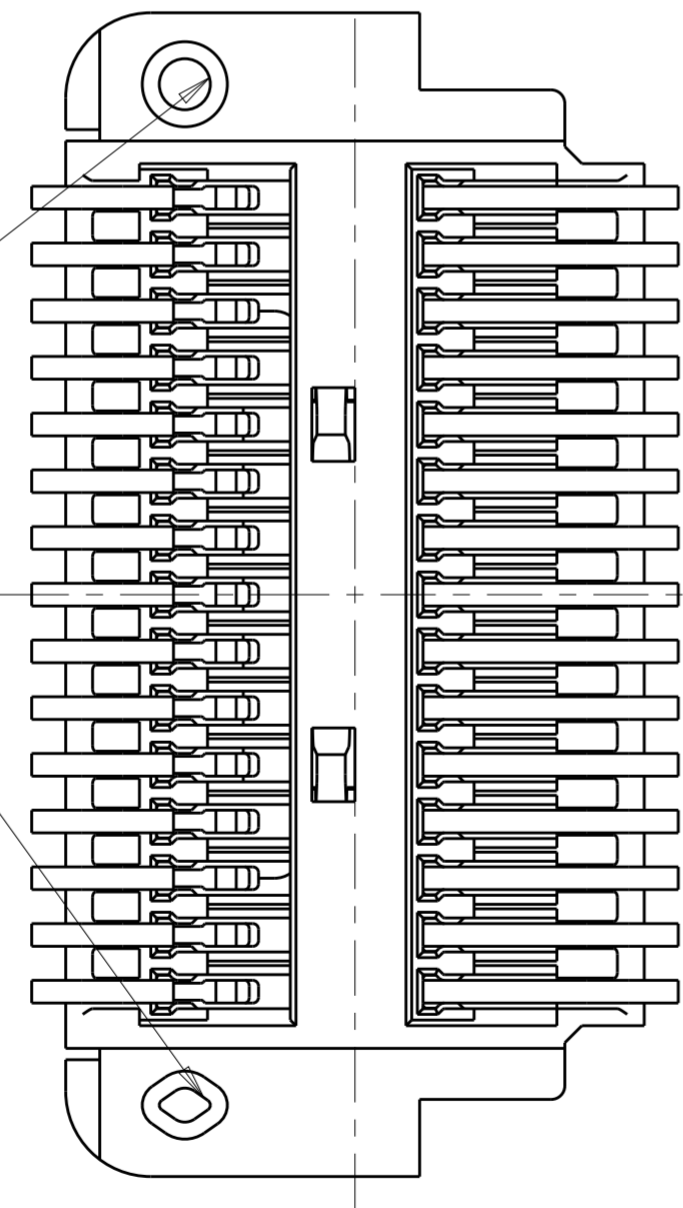
2291283-1 WITH CAP  
(WITH BOSS VERSION)


2291283-2 WITH CAP  
(WITHOUT BOSS VERSION)



WITH POST

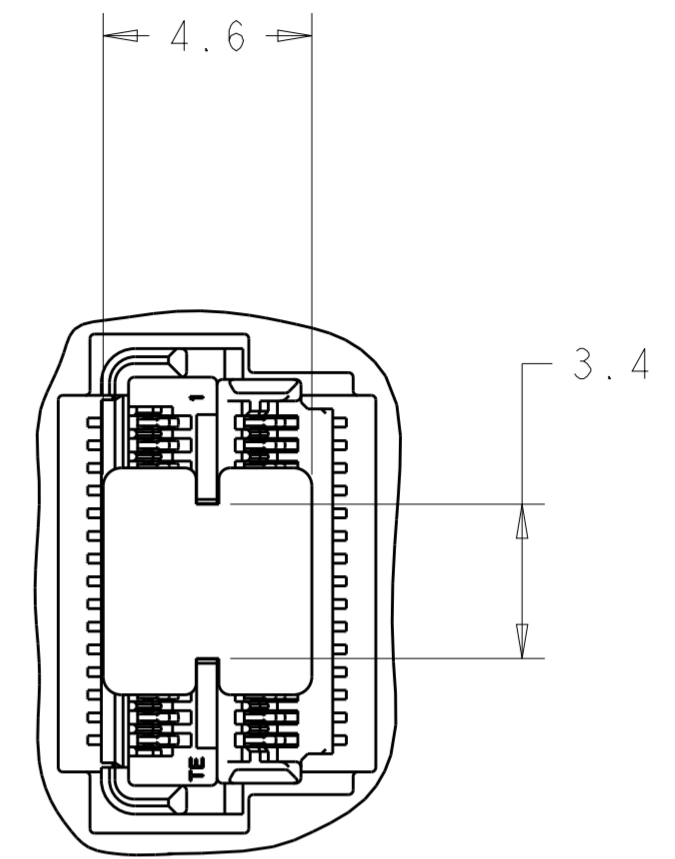
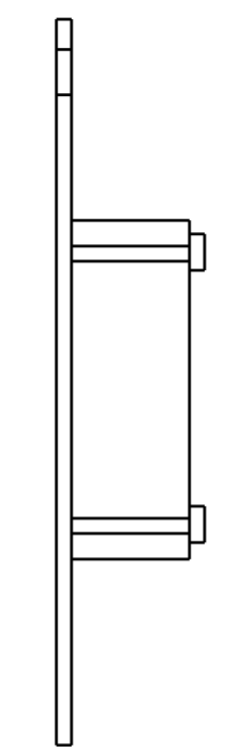
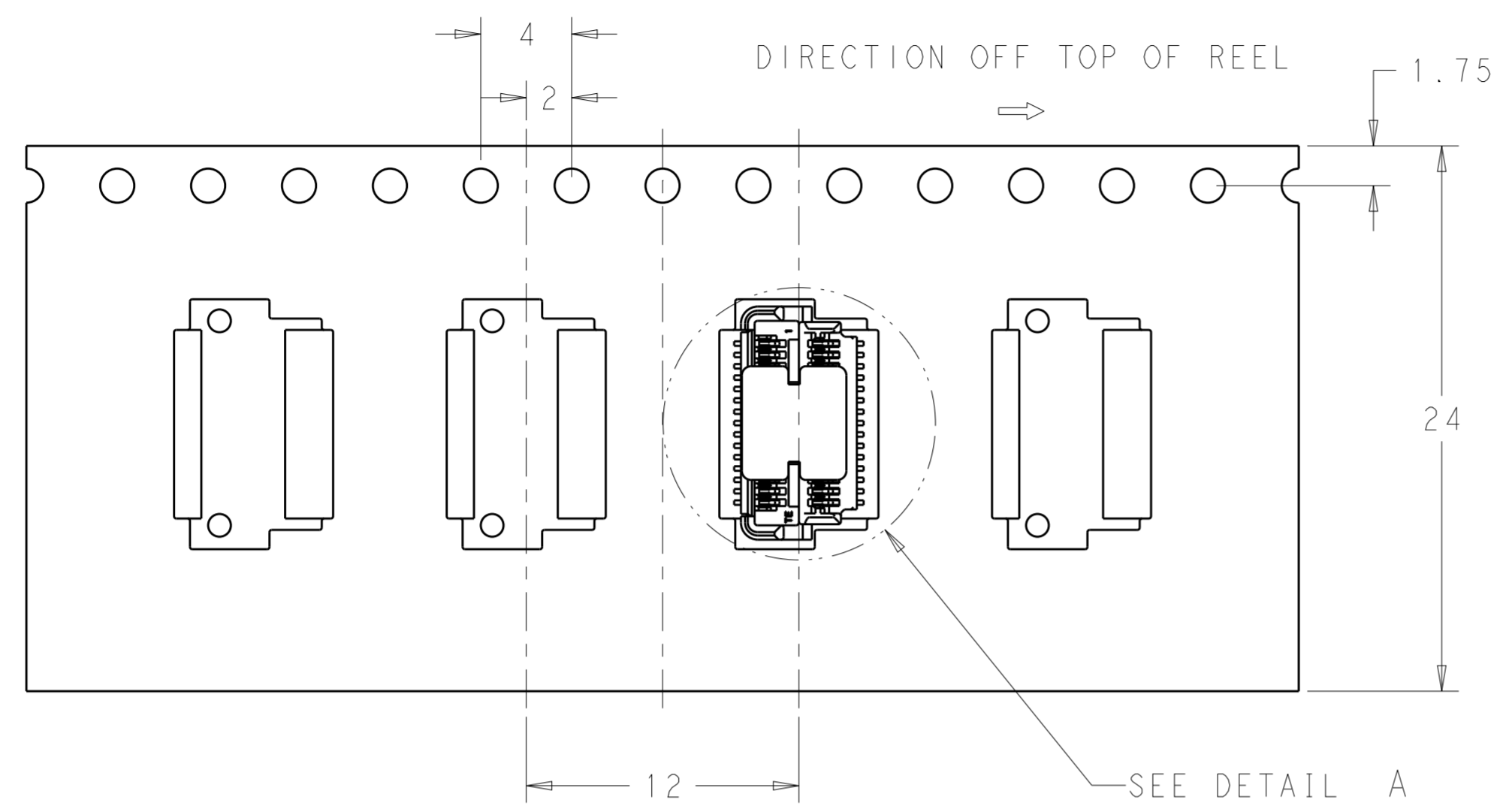
WITHOUT POST



|  |             |  |           |   |
|--|-------------|--|-----------|---|
| THIS DRAWING IS A CONTROLLED DOCUMENT. |             | DWN<br>B. J                            | 18MAY2017 |  TE Connectivity |
|  |             | CHK<br>A. S                            | 18MAY2017 |   |
|  |             | APVD<br>S. Y                           | 18MAY2017 |   |
|  |             | PRODUCT SPEC                           |           |   |
| DIMENSIONS:                            |             | TOLERANCES UNLESS OTHERWISE SPECIFIED: |           | NAME  |
| mm                                     | 0 PLC ±-    | 1 PLC ±0.2                             |           | 0.5MM FPH BTB CONN.   |
|  | 2 PLC ±0.08 | 3 PLC ±-                               |           | 30POS 4MM MATING HEIGHT   |
|  | 4 PLC ±-    | ANGLES ±1°                             |           |   |
|  | FINISH      | finish_spec_2                          |           | SIZE  |
| MATERIAL                               | -           | CUSTOMER DRAWING                       |           | A2  |
|  |             | SCALE 10:1                             |           | CAGE CODE   |
|  |             | SHEET 3 OF 5                           |           | DRAWING NO  |
|  |             | REV A                                  |           | C-2291283   |
|  |             | RESTRICTED TO                          |           |   |

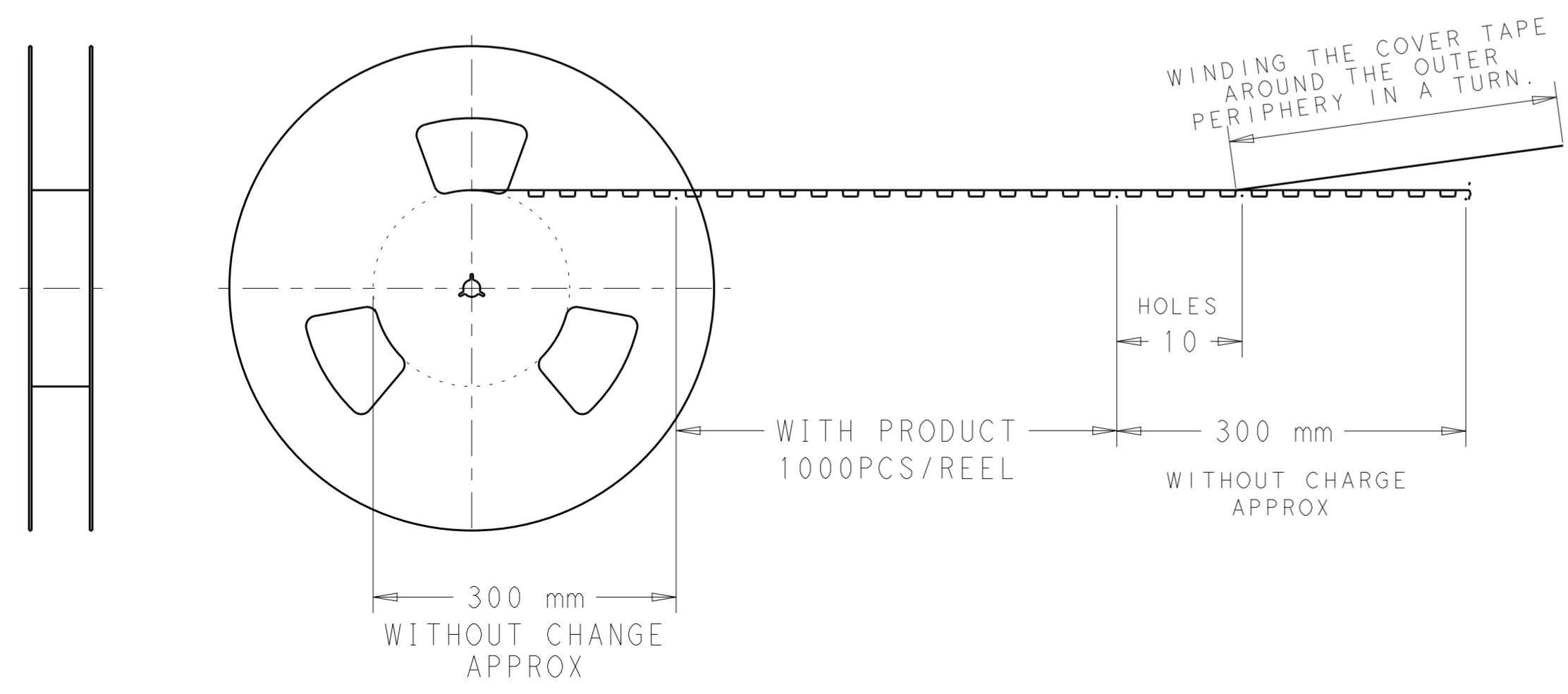
THIS DRAWING IS UNPUBLISHED. RELEASED FOR PUBLICATION  
 © COPYRIGHT copyright.d8te- ALL RIGHTS RESERVED.

| REVISIONS |     |             |      |     |      |
|-----------|-----|-------------|------|-----|------|
| P         | LTR | DESCRIPTION | DATE | DWN | APVD |
| -         |     | SEE SHEET 1 | -    | -   | -    |
|           |     |             |      |     |      |
|           |     |             |      |     |      |



DETAIL A  
SCALE 6:1

SEE DETAIL A

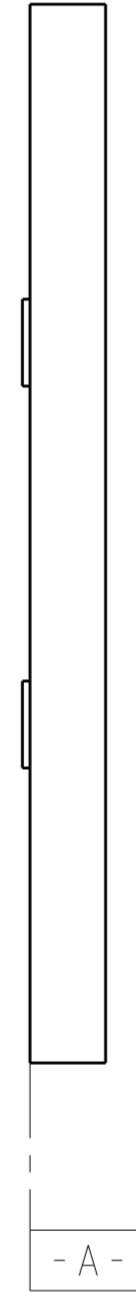
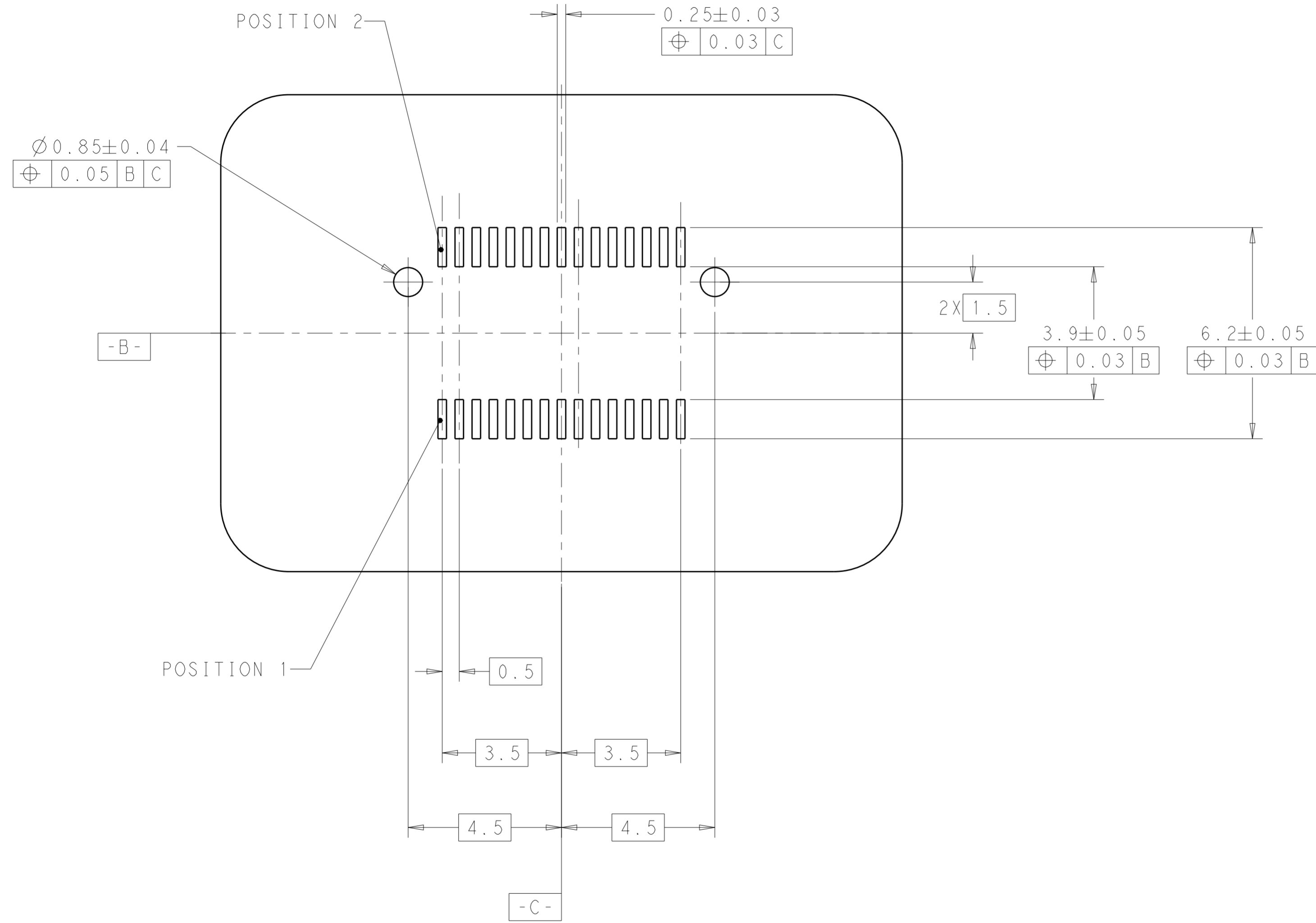


|           |           |               |          |       |     |           |
|-----------|-----------|---------------|----------|-------|-----|-----------|
| NATURAL   | BLACK     | WITHOUT       | $\Delta$ | 1100  | 30  | 2291283-2 |
| NATURAL   | BLACK     | WITH          | $\Delta$ | 1100  | 30  | 2291283-1 |
| CAP COLOR | HSG COLOR | LOCATION POST | FINISH   | QTY/R | POS | P/N       |

|  |               |                          |   |
|--|---------------|--------------------------|---|
| THIS DRAWING IS A CONTROLLED DOCUMENT.   |               | DWN<br>B.J<br>18MAY2017  | <b>STE</b> TE Connectivity                            |
| DIMENSIONS:<br>mm  |               | CHK<br>A.S<br>18MAY2017  |   |
| TOLERANCES UNLESS OTHERWISE SPECIFIED:<br>0 PLC ±<br>1 PLC ±0.2<br>2 PLC ±0.08<br>3 PLC ±<br>4 PLC ±<br>ANGLES ±<br>FINISH |               | APVD<br>S.Y<br>18MAY2017 |   |
| MATERIAL   | -             | PRODUCT SPEC<br>-        | NAME<br>0.5MM FPH BTB CONN<br>30POS 4MM MATING HEIGHT |
|  | finish_spec_2 | APPLICATION SPEC<br>-    | SIZE<br>A2  |
|  |               | WEIGHT<br>-              | CAGE CODE<br>C-2291283                                |
|  |               | CUSTOMER DRAWING         | RESTRICTED TO<br>-                                    |
|  |               | SCALE 10:1               | SHEET 4 OF 5  |
|  |               |                          | REV A   |

THIS DRAWING IS UNPUBLISHED. RELEASED FOR PUBLICATION  
 © COPYRIGHT copyright.dBTe- ALL RIGHTS RESERVED.

| REVISIONS |     |             |      |      |
|-----------|-----|-------------|------|------|
| P         | LTR | DESCRIPTION | DATE | APVD |
| -         |     | SEE SHEET 1 | -    | -    |
|           |     |             |      |      |
|           |     |             |      |      |



RECOMMENDED FOOTPRINT

|  |  |                  |           |                         |  |
|--|--|------------------|-----------|-------------------------|--|
| THIS DRAWING IS A CONTROLLED DOCUMENT. |  | DWN<br>B.J       | 18MAY2017 | TE Connectivity         |  |
|  |  | CHK<br>A.S       | 18MAY2017 |                         |  |
|  |  | APVD<br>S.Y      | 18MAY2017 |                         |  |
|  |  | PRODUCT SPEC     |           |                         |  |
| DIMENSIONS:                            |  |                  |           | NAME                    |  |
| mm                                     |  |                  |           | 0.5MM FPH BTB CONN      |  |
|  |  |                  |           | 30POS 4MM MATING HEIGHT |  |
|  |  |                  |           | -                       |  |
| TOLERANCES UNLESS OTHERWISE SPECIFIED: |  |                  |           | SIZE                    |  |
| 0 PLC ±-                               |  |                  |           | A2                      |  |
| 1 PLC ±0.2                             |  |                  |           | CAGE CODE               |  |
| 2 PLC ±0.08                            |  |                  |           | DRAWING NO              |  |
| 3 PLC ±-                               |  |                  |           | C-2291283               |  |
| 4 PLC ±-                               |  |                  |           | RESTRICTED TO           |  |
| ANGLES ±-                              |  |                  |           | -                       |  |
| FINISH                                 |  |                  |           | SCALE                   |  |
| -                                      |  |                  |           | 10:1                    |  |
| -                                      |  | finish_spec_2    |           | SHEET                   |  |
|  |  | CUSTOMER DRAWING |           | 5 OF 5                  |  |
|  |  |                  |           | REV                     |  |
|  |  |                  |           | A                       |  |