



Chipsmall Limited consists of a professional team with an average of over 10 year of expertise in the distribution of electronic components. Based in Hongkong, we have already established firm and mutual-benefit business relationships with customers from,Europe,America and south Asia,supplying obsolete and hard-to-find components to meet their specific needs.

With the principle of “Quality Parts,Customers Priority,Honest Operation,and Considerate Service”,our business mainly focus on the distribution of electronic components. Line cards we deal with include Microchip,ALPS,ROHM,Xilinx,Pulse,ON,Everlight and Freescale. Main products comprise IC,Modules,Potentiometer,IC Socket,Relay,Connector.Our parts cover such applications as commercial,industrial, and automotives areas.

We are looking forward to setting up business relationship with you and hope to provide you with the best service and solution. Let us make a better world for our industry!



## Contact us

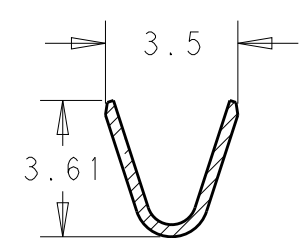
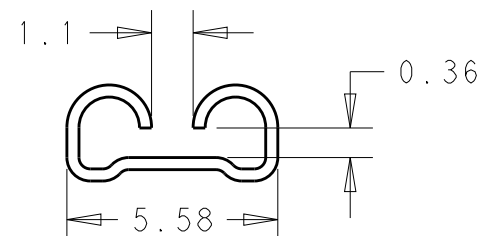
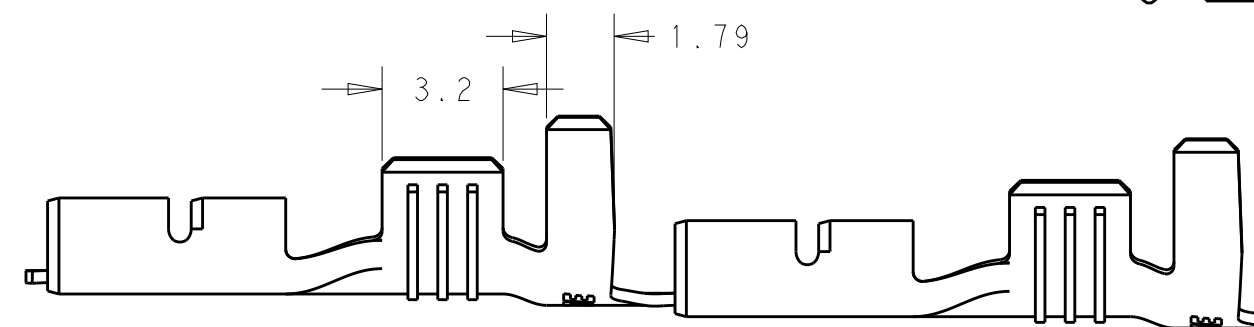
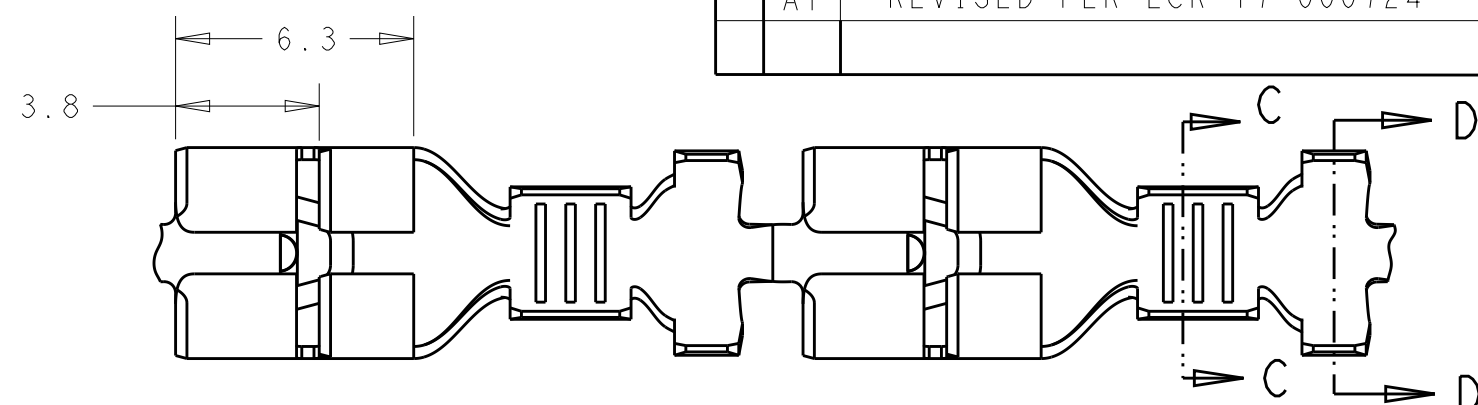
Tel: +86-755-8981 8866 Fax: +86-755-8427 6832

Email & Skype: info@chipsmall.com Web: www.chipsmall.com

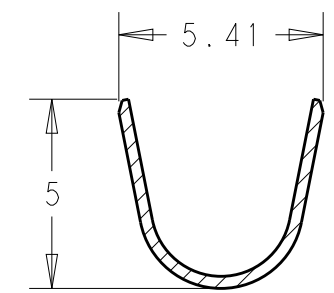
Address: A1208, Overseas Decoration Building, #122 Zhenhua RD., Futian, Shenzhen, China



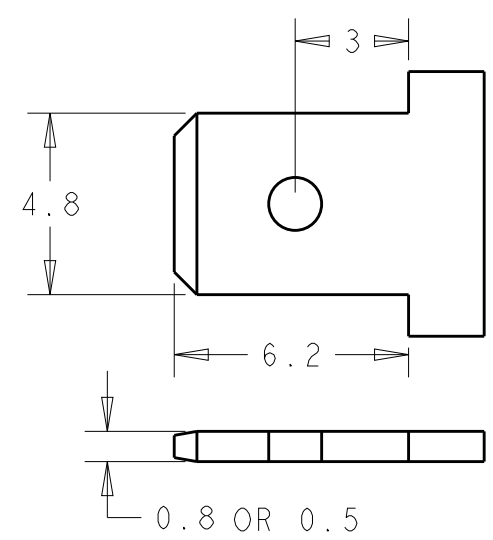
P	LTR	DESCRIPTION	DATE	DWN	APVD
	A1	REVISED PER ECR-17-000724	18JAN2017	HG	TD



SECTION C-C




SECTION D-D



RECOMMENDED MATING TAB DIMENSION

- 1) CONTINUOUS STRIP ON REELS.
- 2) WIRE SIZE IS 1.0mm<sup>2</sup> - 2.5mm<sup>2</sup>.
- 3) INSULATION RANGE 3.0-4.3
- 4) MATING TAB THK 0.50+0.04/- 0.03 or 0.80+0.04/- 0.03.
- 5) APPLICATION REMARK: THIS TERMINAL CAN BE USED O COUNTERPART TABS HAVING THICKNESS 0.5mm AND 0.8mm IT IS NOT ALLOWED TO MATE WITH 0.5mm TAB AFTER MATE WITH THE 0.8mm TAB.

TIN PLATED	BRASS	2293895-1
FINISH	MATERIAL	PART NO

THIS DRAWING IS A CONTROLLED DOCUMENT.		DWN 09SEP2015 JASON JIANG	 TE Connectivity	
DIMENSIONS: mm		CHK TIM DING		
TOLERANCES UNLESS OTHERWISE SPECIFIED:		APVD TIM DING	PRODUCT SPEC 108-106242	
0 PLC ±0.5		PRODUCT SPEC	APPLICATION SPEC 114-106242	
1 PLC ±0.2		APVD	WEIGHT -	
2 PLC ±0.10		PRODUCT SPEC	SIZE A3	
3 PLC ±0.05		APPLICATION SPEC	CAGE CODE -	
4 PLC ±0.000J		WEIGHT	DRAWING NO C-2293895	
ANGLES ±2		FINISH	RESTRICTED TO -	
MATERIAL SEE TABLE		FINISH	SCALE N/A	
-		FINISH	SHEET 1 OF 1	
-		FINISH	REV A1	