



Chipsmall Limited consists of a professional team with an average of over 10 year of expertise in the distribution of electronic components. Based in Hongkong, we have already established firm and mutual-benefit business relationships with customers from,Europe,America and south Asia,supplying obsolete and hard-to-find components to meet their specific needs.

With the principle of “Quality Parts,Customers Priority,Honest Operation,and Considerate Service”,our business mainly focus on the distribution of electronic components. Line cards we deal with include Microchip,ALPS,ROHM,Xilinx,Pulse,ON,Everlight and Freescale. Main products comprise IC,Modules,Potentiometer,IC Socket,Relay,Connector.Our parts cover such applications as commercial,industrial, and automotives areas.

We are looking forward to setting up business relationship with you and hope to provide you with the best service and solution. Let us make a better world for our industry!



Contact us

Tel: +86-755-8981 8866 Fax: +86-755-8427 6832

Email & Skype: info@chipsmall.com Web: www.chipsmall.com

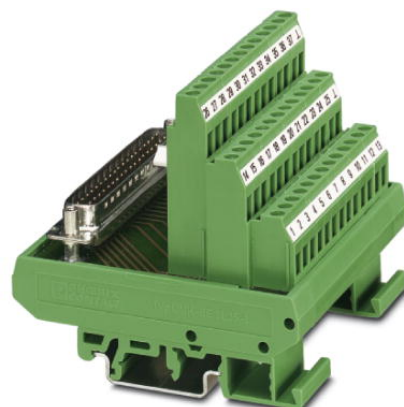
Address: A1208, Overseas Decoration Building, #122 Zhenhua RD., Futian, Shenzhen, China



FLKMS-D25 SUB/B (1-25)

Order No.: 2294351

The illustration shows version FLKMS-D37 SUB/S (1-37)




<http://eshop.phoenixcontact.de/phoenix/treeViewClick.do?UID=2294351>

VARIOFACE module, with screw connection and D-Subminiature socket strip, for mounting on NS 35/7.5 or NS 32, 25-pos.



Commercial data

GTIN (EAN)	 4 017918 132750
sales group	I011
Pack	5 pcs.
Customs tariff	85369010
Catalog page information	Page 249 (IF-2007)

Product notes

WEEE/RoHS-compliant since:
08/10/2006



<http://www.download.phoenixcontact.com>
Please note that the data given here has been taken from the online catalog. For comprehensive information and data, please refer to the user documentation. The General Terms and Conditions of Use apply to Internet downloads.

Technical data

General data

Nominal voltage U_N	125 V AC/DC
Max. current carrying capacity per branch	2.5 A
Number of positions	25

Width	67.5 mm
Height	77 mm
Depth	72 mm
Status display	No
Ambient temperature (operation)	-20 °C ... 50 °C
Ambient temperature (storage/transport)	-20 °C ... 70 °C
Test voltage	800 V (50 Hz, 1 min.)
Mounting position	Any
Standards/regulations	IEC 60664
	DIN EN 50178
	IEC 62103
Pollution degree	2
Surge voltage category	II

Connection data

Connection 1	PCB connection
Connection in acc. with standard	IEC / EN
Type of connection	Screw connection
Conductor cross section solid min.	0.2 mm ²
Conductor cross section solid max.	4 mm ²
Conductor cross section stranded min.	0.2 mm ²
Conductor cross section stranded max.	2.5 mm ²
Conductor cross section AWG/kcmil min.	24
Conductor cross section AWG/kcmil max	12
Stripping length	8 mm
Screw thread	M3
Connection 2	D-SUB connection
Type of connection	Pluggable
Number of positions	25

Certificates / Approvals



Certification

GOST

Accessories		
Item	Designation	Description
Cable/conductor		
2302434	CABLE D-SUB-S-S-S/.../.../...	Shielded round cable, assembled with two D-SUB male connectors, variable cable length
2302340	CABLE D-SUB-S/.../.../...	Shielded round cable, assembled with one D-SUB male and one female connector, variable cable length
2926506	CABLE-D-25SUB/M/OE/0,25/S/0,5M	Shielded cable with a 25-pos. D-SUB pin strip and one open end. The individual wires are labeled 1 to 25 and fitted with ferrules. The braided shield is routed to a separate cable end. Cable length: 0.5 m.
2926519	CABLE-D-25SUB/M/OE/0,25/S/1,0M	Shielded cable with a 25-pos. D-SUB pin strip and one open end. The individual wires are labeled 1 to 25 and fitted with ferrules. The braided shield is routed to a separate cable end. Cable length: 1 m.
2926522	CABLE-D-25SUB/M/OE/0,25/S/1,5M	Shielded cable with a 25-pos. D-SUB pin strip and one open end. The individual wires are labeled 1 to 25 and fitted with ferrules. The braided shield is routed to a separate cable end. Cable length: 1.5 m.
2926535	CABLE-D-25SUB/M/OE/0,25/S/2,0M	Shielded cable with a 25-pos. D-SUB pin strip and one open end. The individual wires are labeled 1 to 25 and fitted with ferrules. The braided shield is routed to a separate cable end. Cable length: 2 m.
2926548	CABLE-D-25SUB/M/OE/0,25/S/3,0M	Shielded cable with a 25-pos. D-SUB pin strip and one open end. The individual wires are labeled 1 to 25 and fitted with ferrules. The braided shield is routed to a separate cable end. Cable length: 3 m.
2926551	CABLE-D-25SUB/M/OE/0,25/S/4,0M	Shielded cable with a 25-pos. D-SUB pin strip and one open end. The individual wires are labeled 1 to 25 and fitted with ferrules. The braided shield is routed to a separate cable end. Cable length: 4 m.
2926564	CABLE-D-25SUB/M/OE/0,25/S/6,0M	Shielded cable with a 25-pos. D-SUB pin strip and one open end. The individual wires are labeled 1 to 25 and fitted with ferrules. The braided shield is routed to a separate cable end. Cable length: 6 m.
2302120	CABLE-D25SUB/B/S/ 50/ KONFEK/S	Round shielded cable set, with 25-pos. D-SUB female and male connectors, cable length: 0.5 m
2302133	CABLE-D25SUB/B/S/100/ KONFEK/S	Round shielded cable set, with 25-pos. D-SUB female and male connectors, cable length: 1 m
2302146	CABLE-D25SUB/B/S/150/ KONFEK/S	Round shielded cable set, with 25-pos. D-SUB female and male connectors, cable length: 1.5 m
2302159	CABLE-D25SUB/B/S/200/ KONFEK/S	Round shielded cable set, with 25-pos. D-SUB female and male connectors, cable length: 2 m
2302162	CABLE-D25SUB/B/S/300/ KONFEK/S	Round shielded cable set, with 25-pos. D-SUB female and male connectors, cable length: 3 m

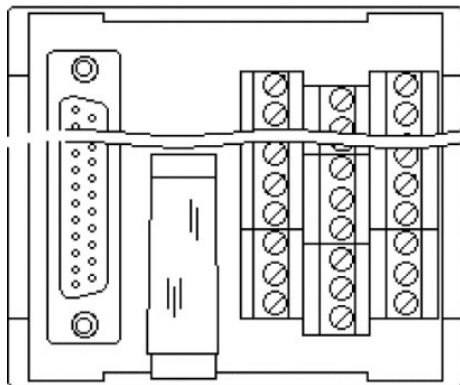
2302175	CABLE-D25SUB/B/S/400/ KONFEK/S	Round shielded cable set, with 25-pos. D-SUB female and male connectors, cable length: 4 m
2302188	CABLE-D25SUB/B/S/600/ KONFEK/S	Round shielded cable set, with 25-pos. D-SUB female and male connectors, cable length: 6 m

General

2900911	CABLE-D-25SUB-M-OE-0,25- S/...	Shielded cable with a 25-pos. D-SUB pin strip and one open end. The individual wires are labeled 1 to 25 and fitted with ferrules. The braided shield is routed to a separate cable end. Cable length: variable.
---------	-----------------------------------	--

Diagrams/Drawings

Schematic diagram



Address

PHOENIX CONTACT Deutschland GmbH
Flachmarktstr. 8
32825 Blomberg, Germany
Phone +49 5235 3 12000
Fax +49 5235 3 41200
<http://www.phoenixcontact.de>



© 2011 Phoenix Contact
Technical modifications reserved;