



Chipsmall Limited consists of a professional team with an average of over 10 year of expertise in the distribution of electronic components. Based in Hongkong, we have already established firm and mutual-benefit business relationships with customers from,Europe,America and south Asia,supplying obsolete and hard-to-find components to meet their specific needs.

With the principle of “Quality Parts,Customers Priority,Honest Operation,and Considerate Service”,our business mainly focus on the distribution of electronic components. Line cards we deal with include Microchip,ALPS,ROHM,Xilinx,Pulse,ON,Everlight and Freescale. Main products comprise IC,Modules,Potentiometer,IC Socket,Relay,Connector.Our parts cover such applications as commercial,industrial, and automotives areas.

We are looking forward to setting up business relationship with you and hope to provide you with the best service and solution. Let us make a better world for our industry!



## Contact us

Tel: +86-755-8981 8866 Fax: +86-755-8427 6832

Email & Skype: info@chipsmall.com Web: www.chipsmall.com

Address: A1208, Overseas Decoration Building, #122 Zhenhua RD., Futian, Shenzhen, China

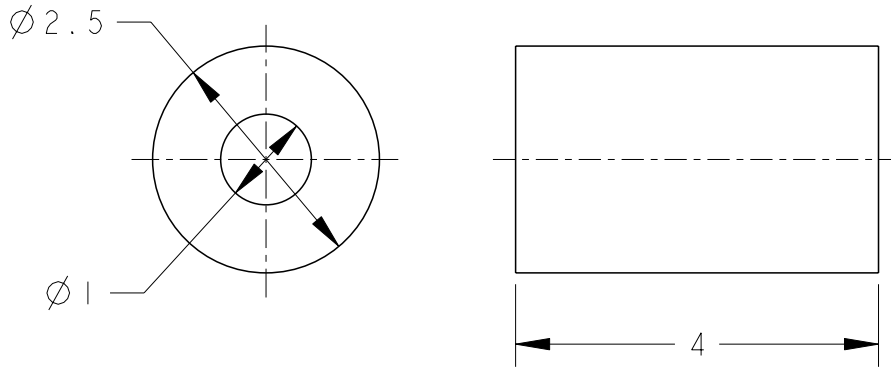


THIS DRAWING IS UNPUBLISHED. BY - ALL RIGHTS RESERVED. 20

REVISIONS

P	LTR	DESCRIPTION	DATE	DWN	APVD
	A	RELEASED	28MAR2016	K.T	E.T
	A1	REVISED	27APR2016	K.T	E.T

- 1 MATERIAL: SILICON RUBBER
- 2 APPLICABLE CABLE INSULATION OUTER DIAMETER  
0.6 - 1.1mm
- 3. REFER TO INSTRUCTION SHEET 408-78115



2295225-1: AS SHOWN

DIMENSIONS: mm  TOLERANCES UNLESS OTHERWISE SPECIFIED: ± 0.5 0 PLC ± _____ 1 PLC ± _____ 2 PLC ± _____ 3 PLC ± _____ 4 PLC ± _____ ANGLES ± 5°	DWN K. TERAJIMA 28MAR2016	MATERIAL -  - FINISH -				
	CHK E. TAKEMASA 28MAR2016	TE Connectivity				
APVD E. TAKEMASA 28MAR2016	PRODUCT SPEC 108-140100			NAME THERMOCOUPLE CONNECTOR GROMMET		
APPLICATION SPEC -	SIZE A 4	CAGE CODE -	DRAWING NO C-2295225	RESTRICTED TO -		
WEIGHT -	CUSTOMER DRAWING			SCALE 5:1	SHEET 1 OF 1	REV A1