



Chipsmall Limited consists of a professional team with an average of over 10 year of expertise in the distribution of electronic components. Based in Hongkong, we have already established firm and mutual-benefit business relationships with customers from,Europe,America and south Asia,supplying obsolete and hard-to-find components to meet their specific needs.

With the principle of “Quality Parts,Customers Priority,Honest Operation,and Considerate Service”,our business mainly focus on the distribution of electronic components. Line cards we deal with include Microchip,ALPS,ROHM,Xilinx,Pulse,ON,Everlight and Freescale. Main products comprise IC,Modules,Potentiometer,IC Socket,Relay,Connector.Our parts cover such applications as commercial,industrial, and automotives areas.

We are looking forward to setting up business relationship with you and hope to provide you with the best service and solution. Let us make a better world for our industry!



## Contact us

Tel: +86-755-8981 8866 Fax: +86-755-8427 6832

Email & Skype: info@chipsmall.com Web: www.chipsmall.com

Address: A1208, Overseas Decoration Building, #122 Zhenhua RD., Futian, Shenzhen, China



THIS DRAWING IS UNPUBLISHED.

RELEASED FOR PUBLICATION

20

© COPYRIGHT 20 BY -

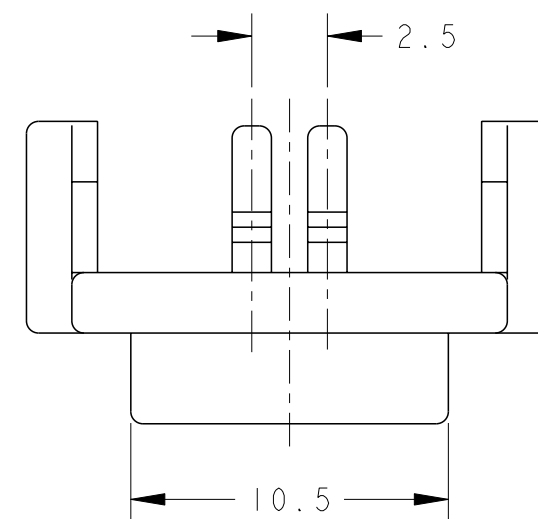
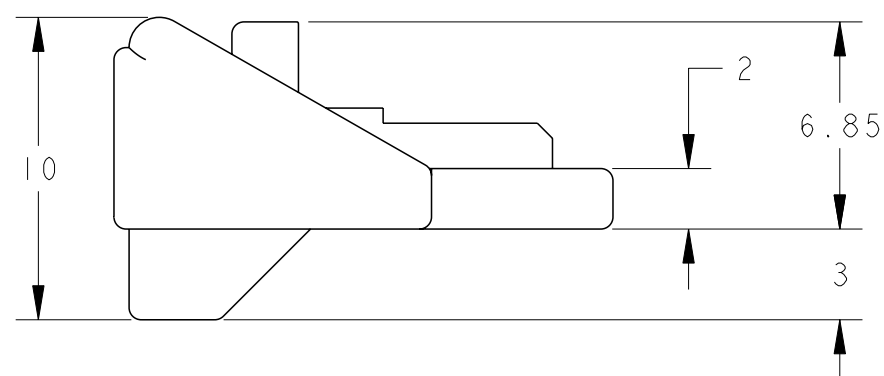
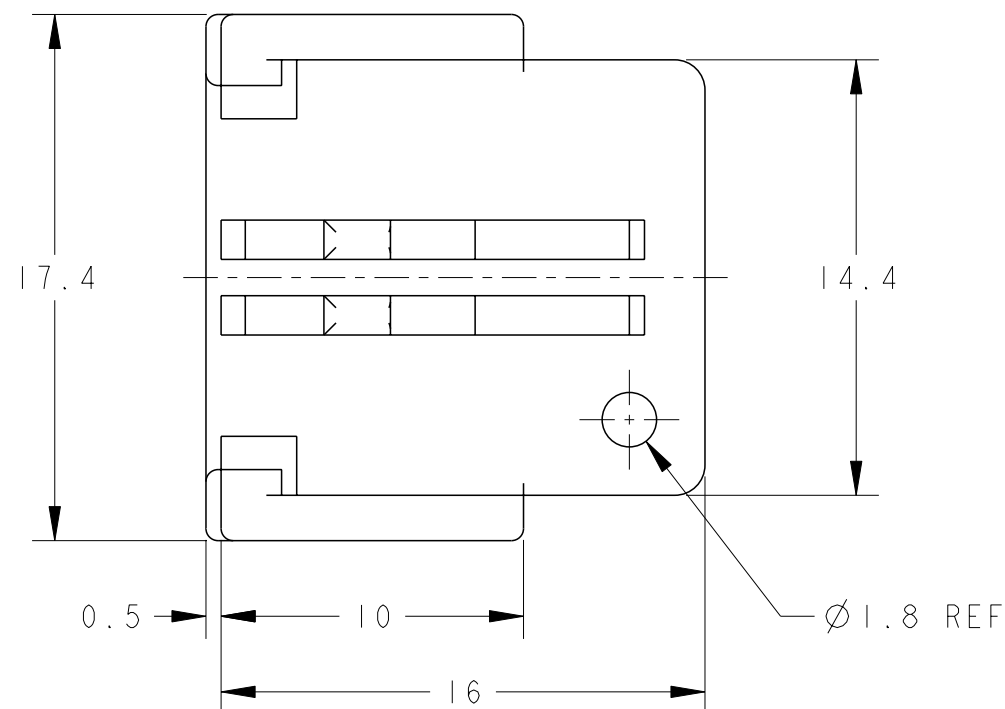
ALL RIGHTS RESERVED.

2295226-1: AS SHOWN

REVISIONS

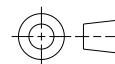
P	LTR	DESCRIPTION	DATE	DWN	APVD
	A	RELEASED	28MAR2016	K.T	E.T
	B	REVISED	22APR2016	K.T	E.T

1 MATERIAL: THERMO PLASTIC, UL94V-0  
 2 REFER TO INSTRUCTION SHEET 408-78115



THIS DRAWING IS A CONTROLLED DOCUMENT.

DIMENSIONS:  
mm



TOLERANCES UNLESS OTHERWISE SPECIFIED:  
 $\pm 0.3$

- 0-PLC  $\pm$
- 1-PLC  $\pm$
- 2-PLC  $\pm$
- 3-PLC  $\pm$
- 4-PLC  $\pm$
- ANGLES  $\pm 5^\circ$

MATERIAL -  
 - 1

DWN 28MAR2016  
 K.TERAJIMA  
 CHK 28MAR2016  
 E.TAKEMASA  
 APVD 28MAR2016  
 E.TAKEMASA

PRODUCT SPEC  
 108-140100  
 APPLICATION SPEC  
 -  
 WEIGHT -

CUSTOMER DRAWING



TE Connectivity

NAME  
 THERMOCOUPLE CONNECTOR 2POS  
 OPENER

SIZE A3	CAGE CODE -	DRAWING NO C-2295226	RESTRICTED TO -
------------	----------------	-------------------------	--------------------

SCALE 4:1 SHEET 1 OF 1 REV B