



Chipsmall Limited consists of a professional team with an average of over 10 year of expertise in the distribution of electronic components. Based in Hongkong, we have already established firm and mutual-benefit business relationships with customers from,Europe,America and south Asia,supplying obsolete and hard-to-find components to meet their specific needs.

With the principle of "Quality Parts,Customers Priority,Honest Operation,and Considerate Service",our business mainly focus on the distribution of electronic components. Line cards we deal with include Microchip,ALPS,ROHM,Xilinx,Pulse,ON,Everlight and Freescale. Main products comprise IC,Modules,Potentiometer,IC Socket,Relay,Connector.Our parts cover such applications as commercial,industrial, and automotives areas.

We are looking forward to setting up business relationship with you and hope to provide you with the best service and solution. Let us make a better world for our industry!



Contact us

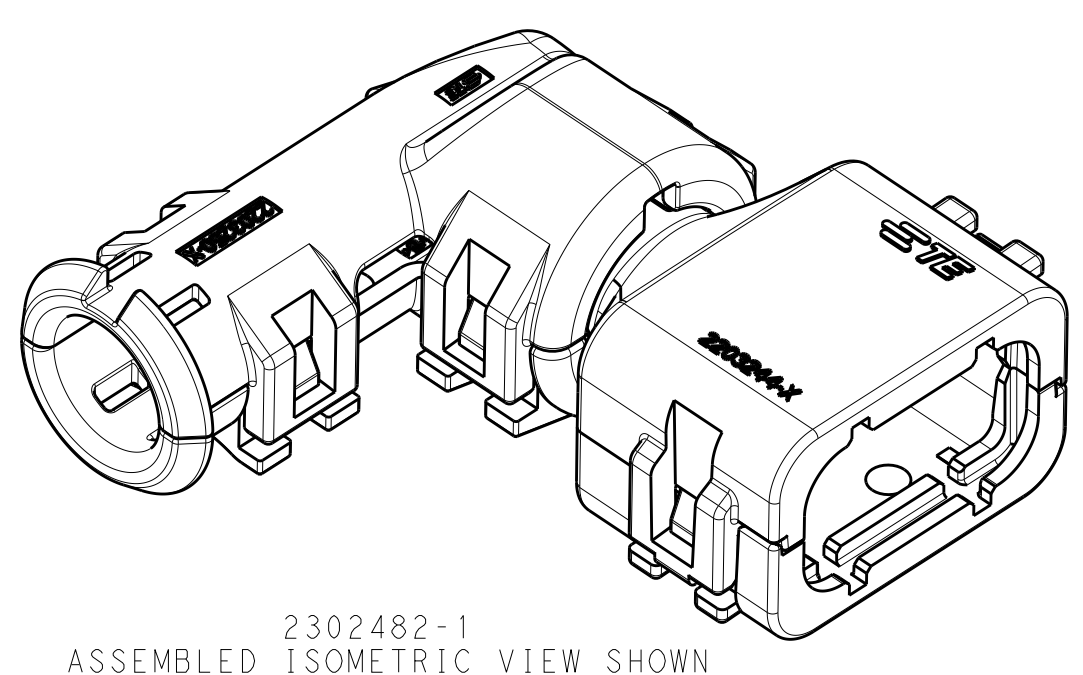
Tel: +86-755-8981 8866 Fax: +86-755-8427 6832

Email & Skype: info@chipsmall.com Web: www.chipsmall.com

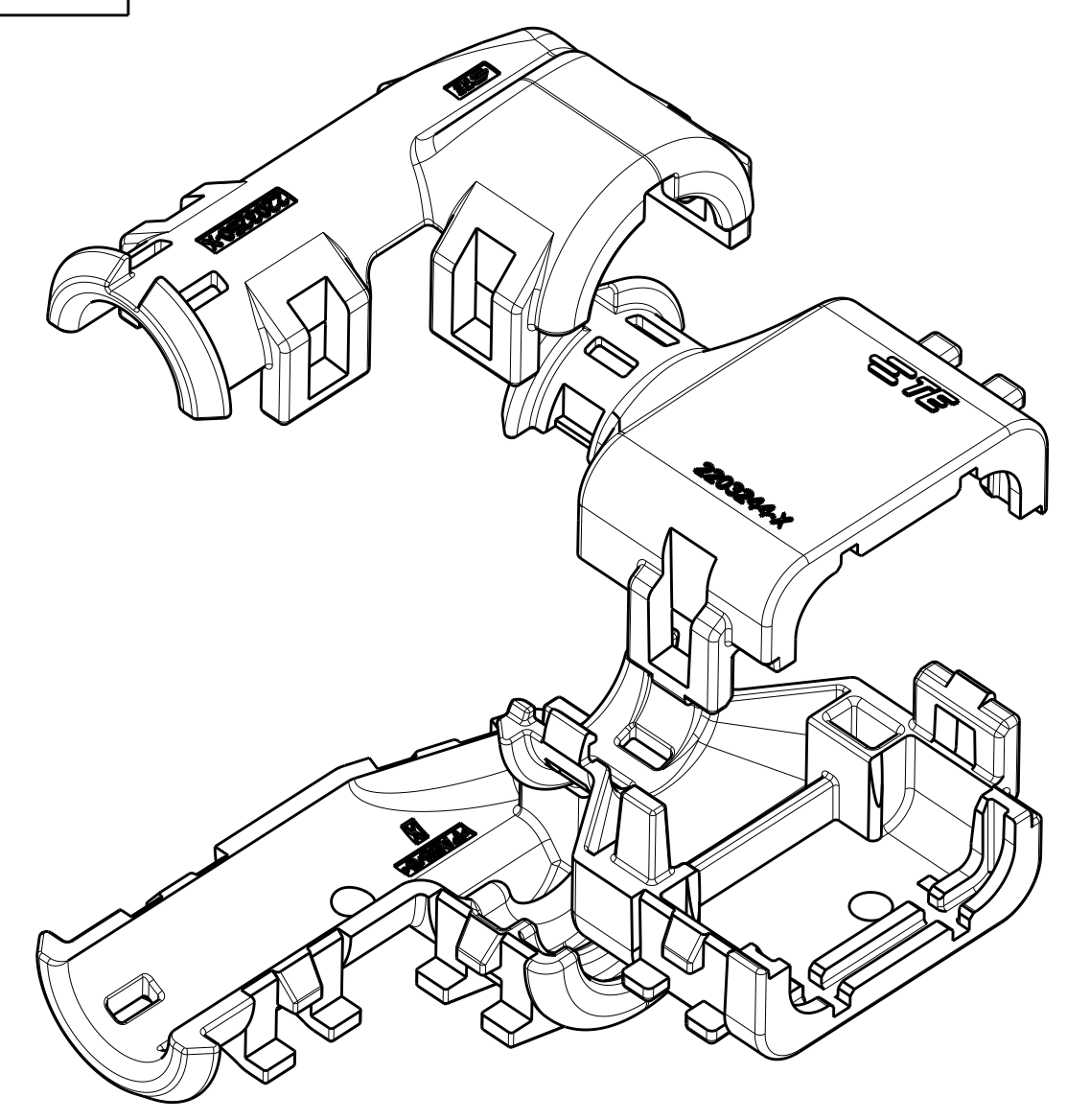
Address: A1208, Overseas Decoration Building, #122 Zhenhua RD., Futian, Shenzhen, China



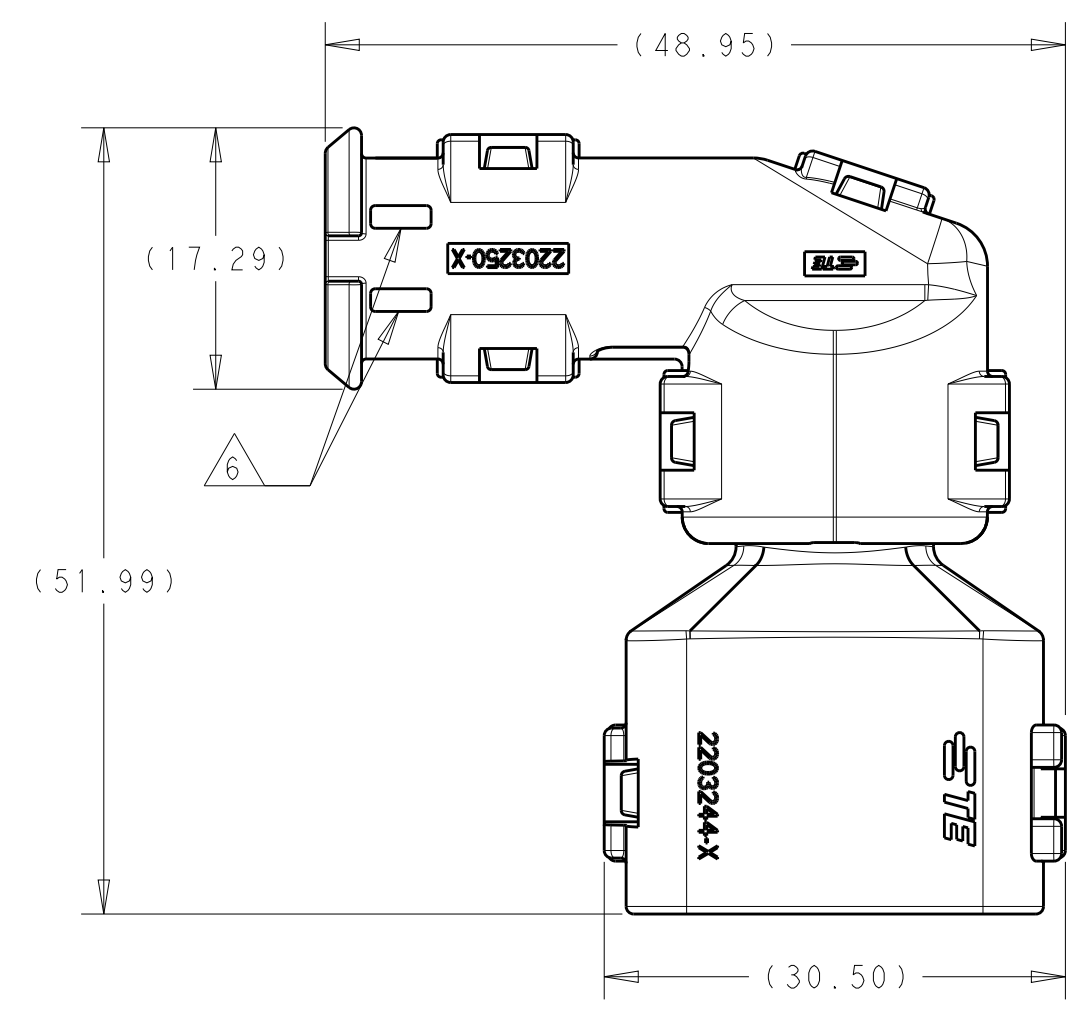
REVISIONS				
P	LTN	DESCRIPTION	DATE	APP'D
A		RELEASED PER ECO-16-007279	12MAY2016	JM RB
A2		REV PER ECO-16-013256	08SEP2016	JM RB



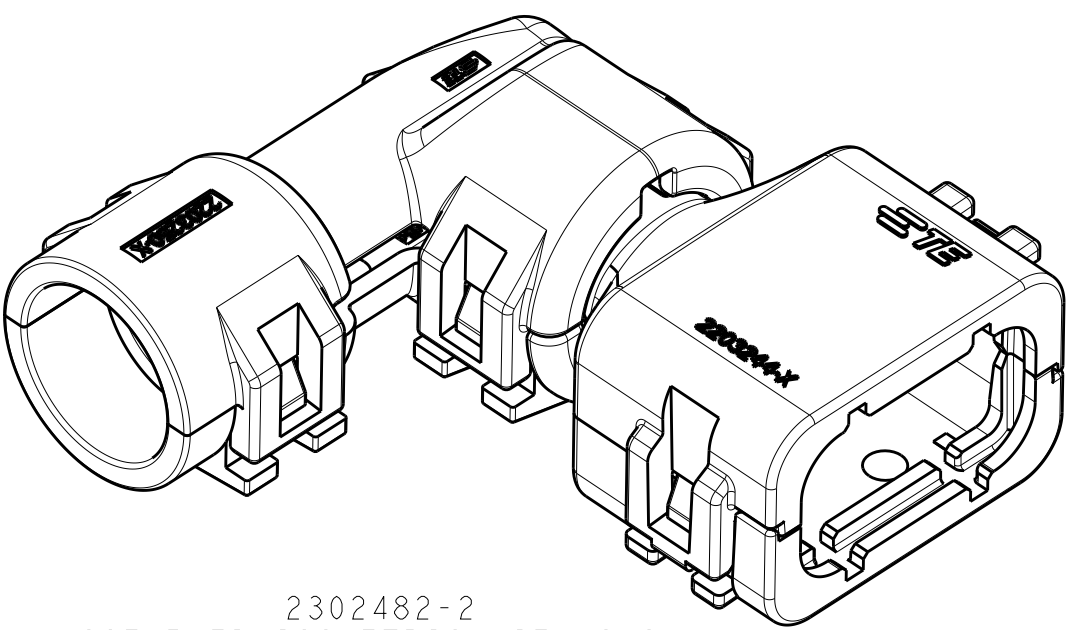
2302482-1
ASSEMBLED ISOMETRIC VIEW SHOWN



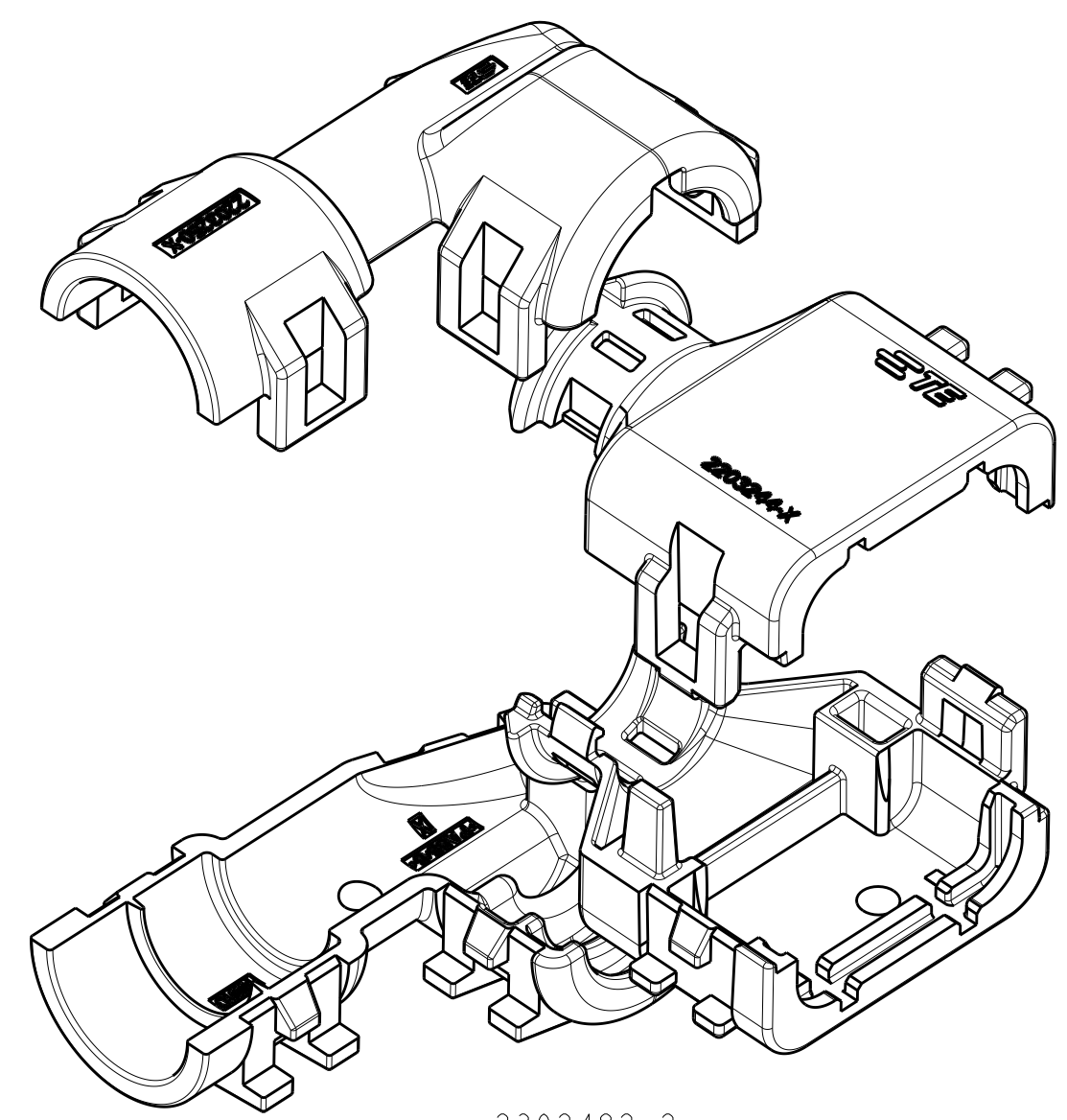
2302482-1
EXPLODED ISOMETRIC VIEW SHOWN
 2 3



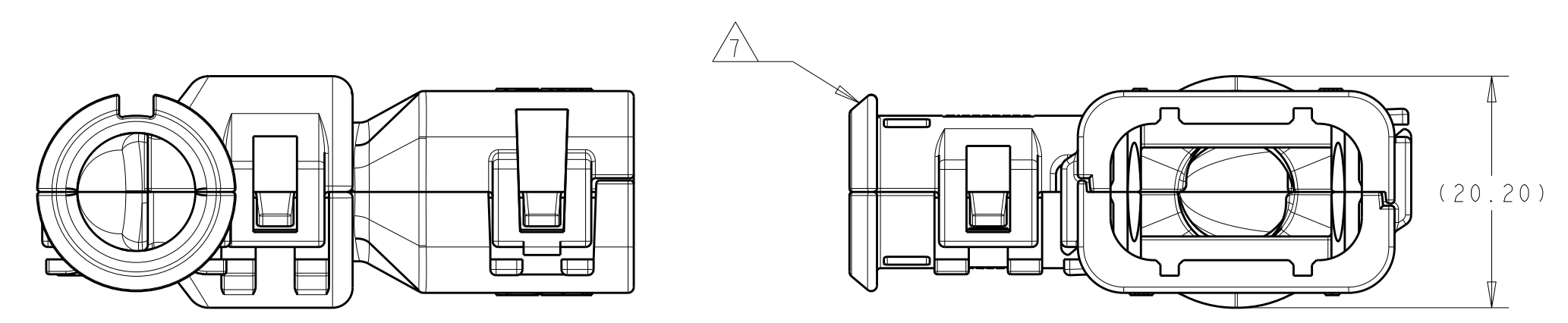
- 1 MATERIAL: NYLON MOLDING COMPOUND, BLACK, PA66/6.
- 2 BACKSHELL DESIGNED SUCH THAT TWO HALVES ATTACH TO ONE ANOTHER AND CLAMP AROUND THE CONNECTOR COVER.
- 3 ELBOW DESIGNED SUCH THAT TWO HALVES ATTACH TO ONE ANOTHER AND CLAMP AROUND THE BACKSHELL COLLAR.
- 4 DIMENSIONS TO BE MEASURED WHEN ELBOWS AND BACKSHELLS ASSEMBLED.
- 5 PRODUCT WEIGHTS:
 2302482-1: 10.10g ASSEMBLED
 2302482-2: 10.75g ASSEMBLED
 2302482-3: 10.20g ASSEMBLED
- 6 4mm WIDE SLOTS FOR TIE WRAP TO SECURE HARNESS WIRES (-1 ONLY).
- 7 HEAT SHRINK TUBING FEATURE (-1 AND -3 ONLY).
- 8. INSTRUCTION SHEET: 408-151043.
- 9. CONDUIT PROFILE: NORMAL ONLY.



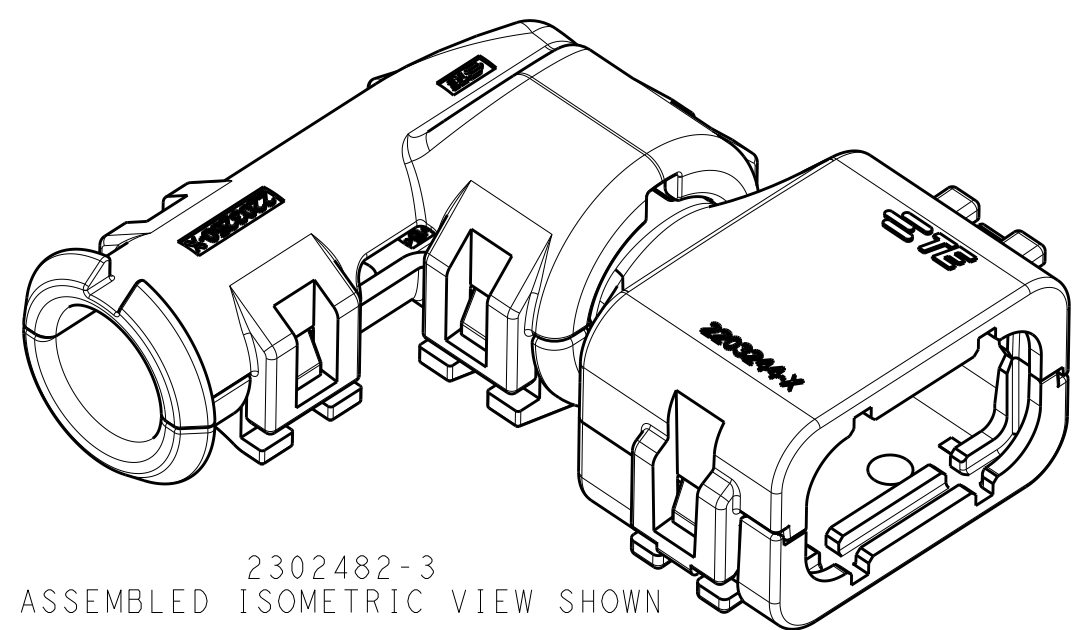
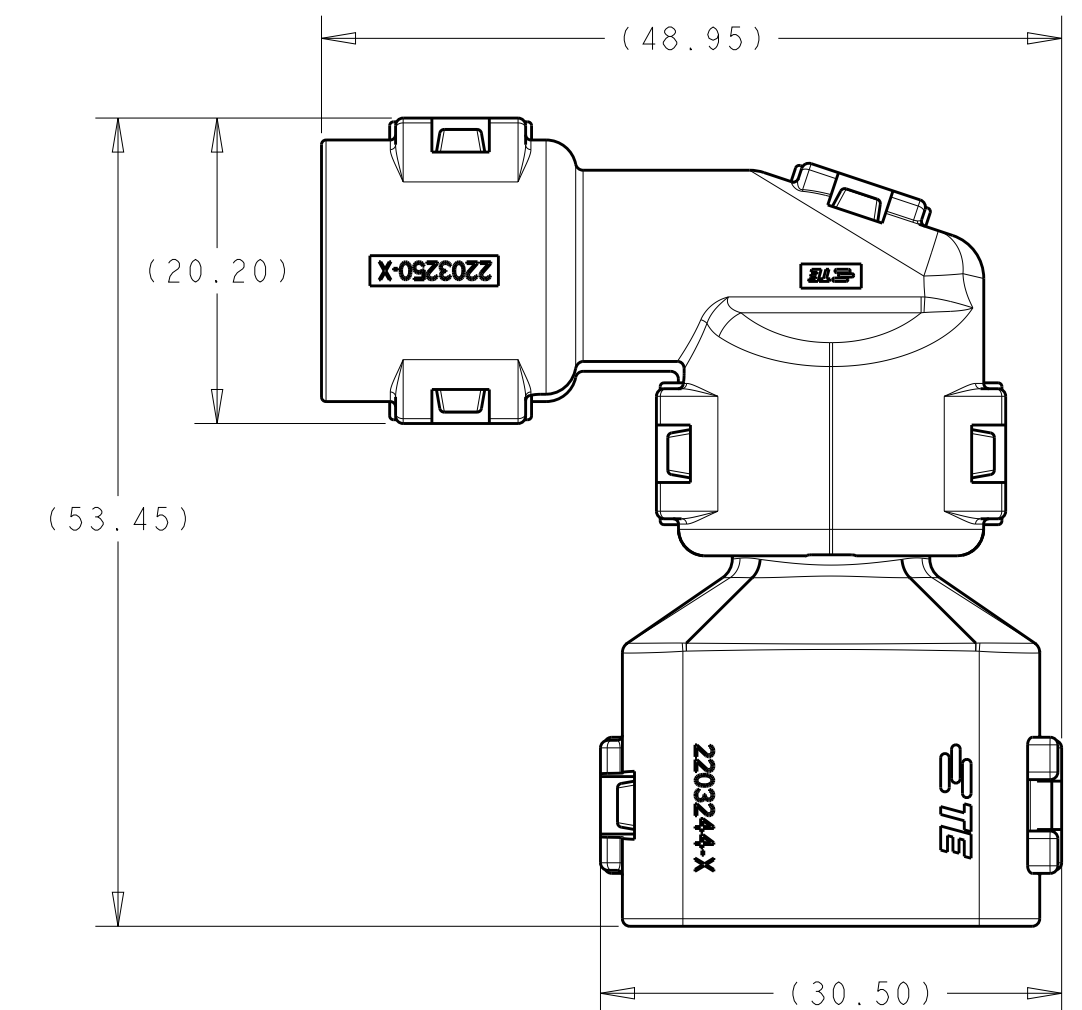
2302482-2
ASSEMBLED ISOMETRIC VIEW SHOWN



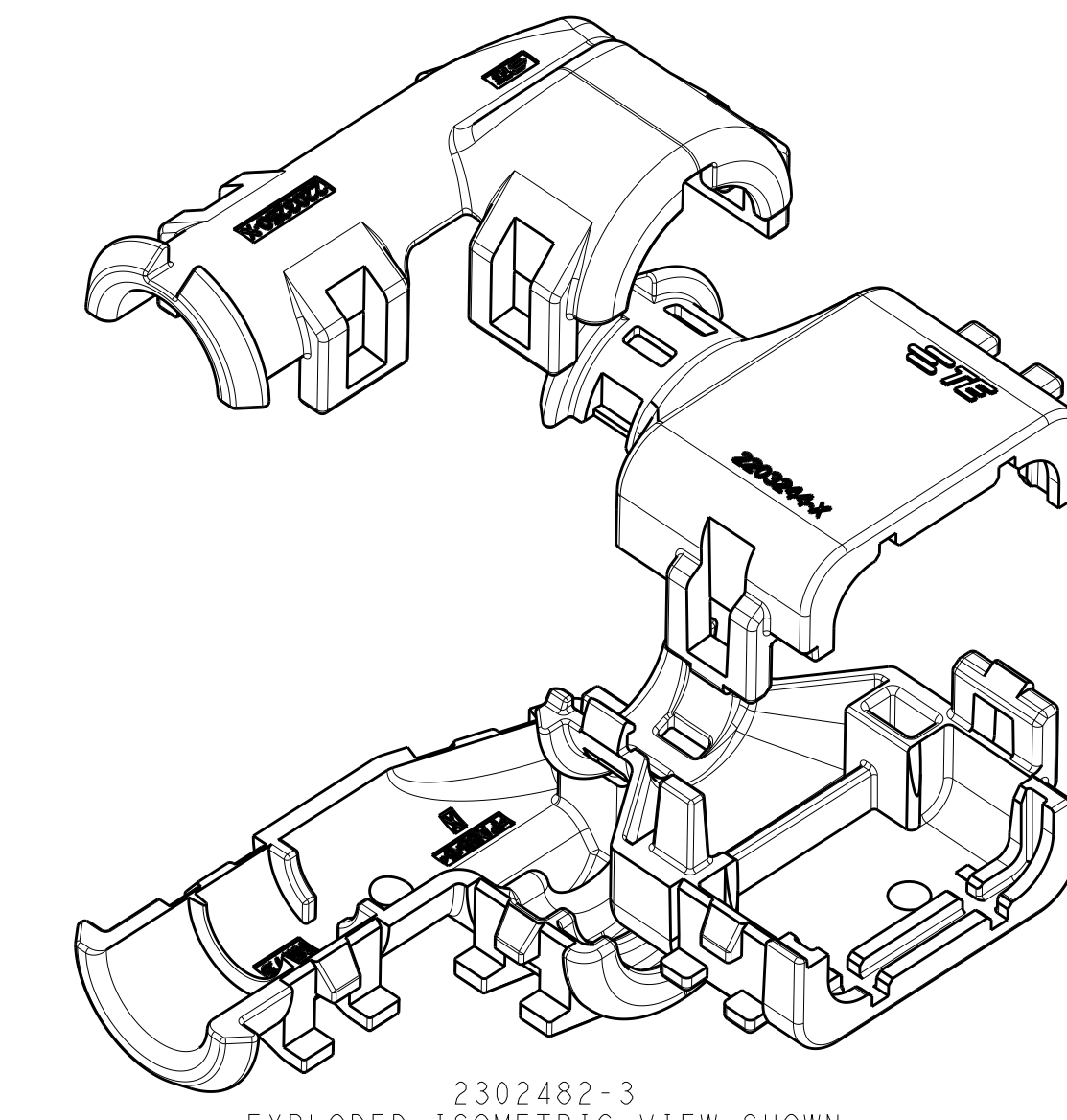
2302482-2
EXPLODED ISOMETRIC VIEW SHOWN
 2 3



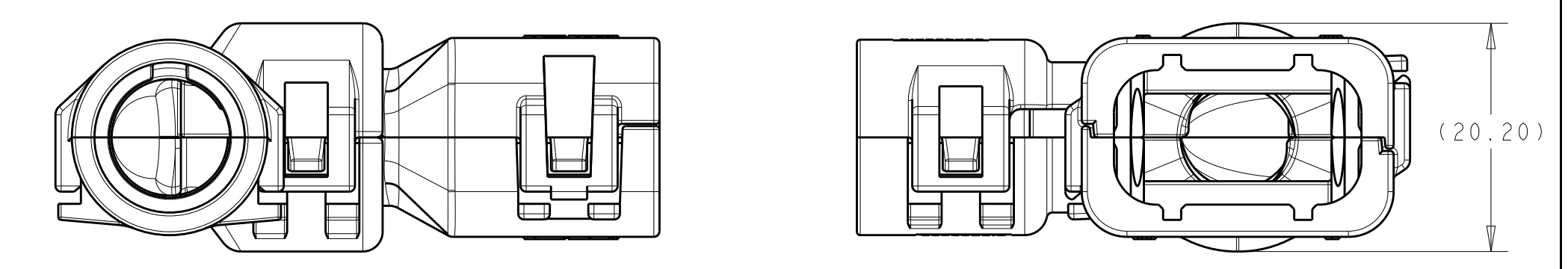
2302482-1
ASSEMBLED VIEW SHOWN
 DIMENSIONS SHOWN TYPICAL FOR 2302482-1 AND -3
 4



2302482-3
ASSEMBLED ISOMETRIC VIEW SHOWN



2302482-3
EXPLODED ISOMETRIC VIEW SHOWN
 2 3



2302482-2
ASSEMBLED VIEW SHOWN
 DIMENSIONS SHOWN FOR 2302482-2 ONLY
 4

776430-X	NC08	NW7.5	2302482-3
776535-X	NC12	NW10	2302482-2
	SMOOTH	SMOOTH	2302482-1
FITS ON CAP ASSY	CORRUGATE NC	CORRUGATE NW	PART NUMBER
	CONDUIT SIZE		

THIS DRAWING IS A CONTROLLED DOCUMENT.

DIMENSIONS:	TOLERANCES UNLESS OTHERWISE SPECIFIED:	DWN J MCNEAL 26APR2016 CHK R BALTER 26APR2016 APP'D R BALTER 26APR2016 PRODUCT SPEC 108-151043 APPLICATION SPEC MATERIAL: 1 FINISH: 1	NAME: BACKSHELL AND ELBOW KIT, 3 POSITION, CAP ASSEMBLY, AMPSEAL 16 SIZE: A1 CAGE CODE: 100779 DRAWING NO: C=2302482 RESTRICTED TO: A2
CUSTOMER DRAWING		SCALE: 2:1	SHEET 1 OF 1 REV: A2