



Chipsmall Limited consists of a professional team with an average of over 10 year of expertise in the distribution of electronic components. Based in Hongkong, we have already established firm and mutual-benefit business relationships with customers from,Europe,America and south Asia,supplying obsolete and hard-to-find components to meet their specific needs.

With the principle of “Quality Parts,Customers Priority,Honest Operation,and Considerate Service”,our business mainly focus on the distribution of electronic components. Line cards we deal with include Microchip,ALPS,ROHM,Xilinx,Pulse,ON,Everlight and Freescale. Main products comprise IC,Modules,Potentiometer,IC Socket,Relay,Connector.Our parts cover such applications as commercial,industrial, and automotives areas.

We are looking forward to setting up business relationship with you and hope to provide you with the best service and solution. Let us make a better world for our industry!



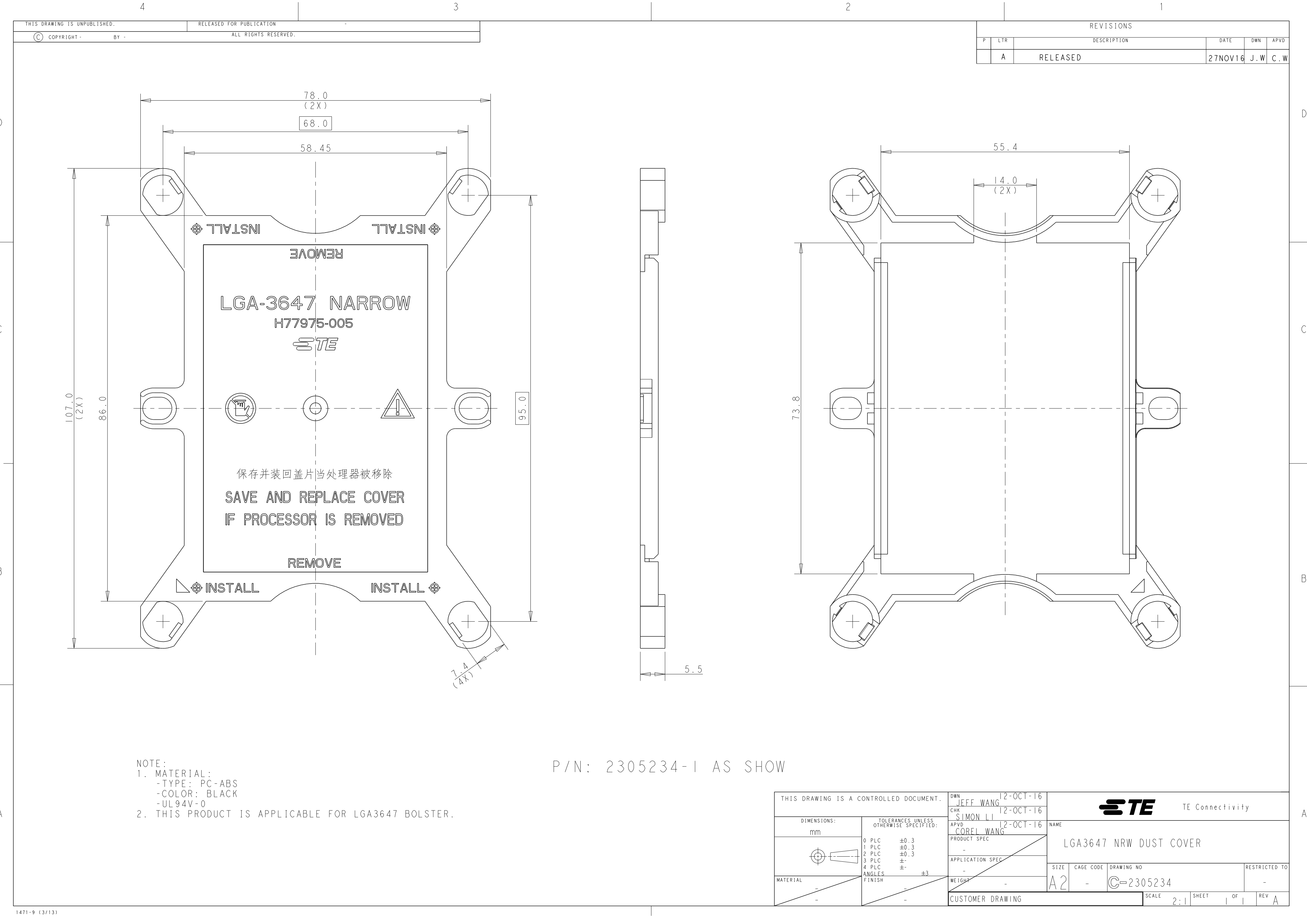
Contact us

Tel: +86-755-8981 8866 Fax: +86-755-8427 6832


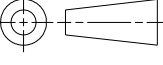
Email & Skype: info@chipsmall.com Web: www.chipsmall.com

Address: A1208, Overseas Decoration Building, #122 Zhenhua RD., Futian, Shenzhen, China





P/N: 2305234-1 AS SHOW

THIS DRAWING IS A CONTROLLED DOCUMENT.		DWN JEFF WANG 12-OCT-16	 TE Connectivity			
DIMENSIONS:		CHK SIMON LI 12-OCT-16				
mm	TOLERANCES UNLESS OTHERWISE SPECIFIED:	APVD COREI WANG 12-OCT-16	NAME			
	0 PLC ±0.3 1 PLC ±0.3 2 PLC ±0.3 3 PLC ± 4 PLC ±	PRODUCT SPEC	LGA3647 NRW DUST COVER			
MATERIAL	ANGLES ±3 FINISH	APPLICATION SPEC	SIZE	CAGE CODE	DRAWING NO	RESTRICTED TO
-	-	WEIGHT	A2	-	C-2305234	-
CUSTOMER DRAWING			SCALE	2:1	SHEET	OF
			REV A			