



Chipsmall Limited consists of a professional team with an average of over 10 year of expertise in the distribution of electronic components. Based in Hongkong, we have already established firm and mutual-benefit business relationships with customers from,Europe,America and south Asia,supplying obsolete and hard-to-find components to meet their specific needs.

With the principle of “Quality Parts,Customers Priority,Honest Operation,and Considerate Service”,our business mainly focus on the distribution of electronic components. Line cards we deal with include Microchip,ALPS,ROHM,Xilinx,Pulse,ON,Everlight and Freescale. Main products comprise IC,Modules,Potentiometer,IC Socket,Relay,Connector.Our parts cover such applications as commercial,industrial, and automotives areas.

We are looking forward to setting up business relationship with you and hope to provide you with the best service and solution. Let us make a better world for our industry!



Contact us

Tel: +86-755-8981 8866 Fax: +86-755-8427 6832

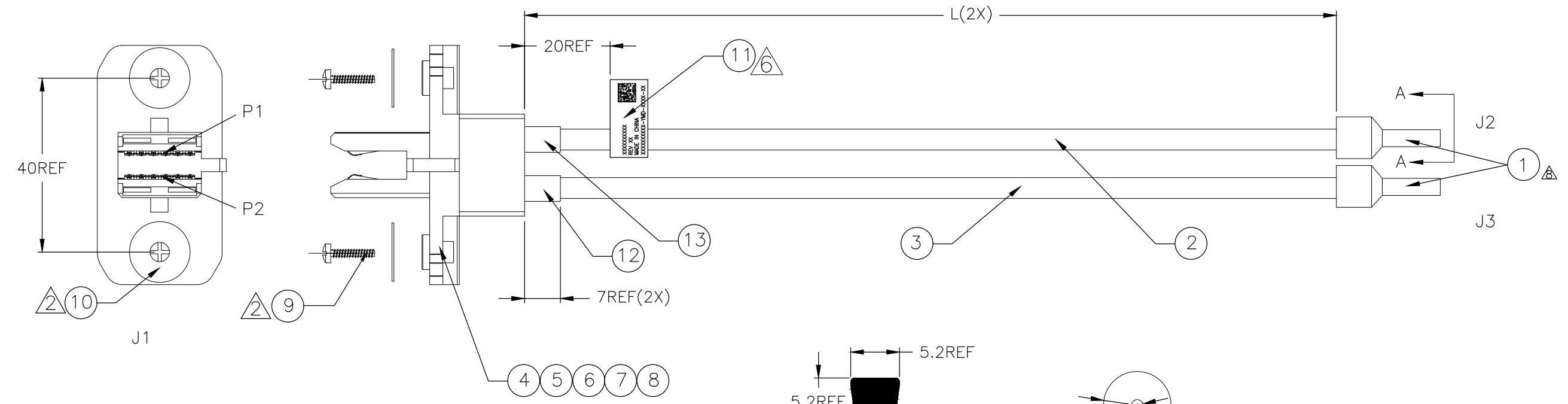
Email & Skype: info@chipsmall.com Web: www.chipsmall.com

Address: A1208, Overseas Decoration Building, #122 Zhenhua RD., Futian, Shenzhen, China

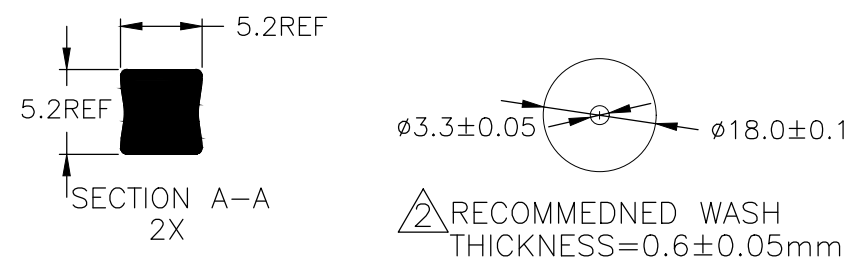


THIS DRAWING IS UNPUBLISHED. RELEASED FOR PUBLICATION
 © COPYRIGHT - By - ALL RIGHTS RESERVED.

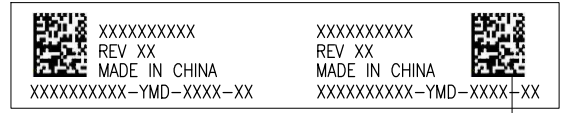
REVISIONS				
P	LTR	DESCRIPTION	DATE	APVD
	A	RELEASE	02MAY2018	AC DZ



- NOTES:
- 100% KEEP THE PRODUCT NOT OPEN OR SHORT
 - SCREWS AND WASHERS WILL BE PACKAGED SEPARATELY.
RECOMMENDED TORQUE 4kgf.cm MAX.
 - CONNECTOR MATE TO PANEL FROM OPPOSITE SIDE.
 - NO BURR ALLOWED ON OPPOSITE (MATTING) SIDE.
 - RECOMMENDED BUS-BAR PLATING 3um MIN. SILVER ON CONTACT AREA AND 1.27um MIN. Ni. OVERALL. THICKNESS 6.0±0.05MM WITH C0.5 CHAMFER OR R0.5 ROUND.



6 LABEL PRINTED INFORMATION AS FOLLOWING



XXXXXXXXXX TE P/N(4X)
 XX TE REV(4X)
 YMD DATE CODE(2X)
 Y: THE LAST DATA OF YEAR. FOR EXAMPLE, Y IS 4 FOR 2014
 M: THE MONTH 1~9, A~C.
 D: THE DAY 1~9, A~V
 XXX(2X): SERIES NUMBER, A RADIX OF 36, (0~9,A~Z)
 X(2X): SERIES NUMBER, A RADIX OF 25, (0~9,A~0)
 (2X)READ AS: XXXXXXXXXXXX-YMD-XXXX-XX
 FONT SIZE: 4pt

- FONT: Verdana Black, 5pt Height, MEET ISO/IEC 16022, REQUEST OF PRINT.
- SCANNING LEVEL: C MIN., OR MEET ISO/IER 15415 STANDARD.
- TYPE: DATA MATRIX, MEET ISO/IEC 16022 DATA MATRIX STANDARD.
- 10 MIL CELL DIMENSION.
- 300 DPI PRINTER MIN.

- APPLICATION RATING:
VOLTAGE: 48V DC OR RMS*
CURRENT: 75A**
*VARIABLE, BASED ON APPLICATION
**VARIABLE, UP TO 75A, BASED ON WIRING
- VARIABLE END, BASED ON CUSTOMER APPLICATION.
- CONTACT LOCAL TE SALES REP OR OCP@TE.com FOR ADDITIONAL PRODUCT OPTIONS AND INFORMATION.
- SILVER PLATING CONTACT MAY DISCOLOR IN AIR, BUT NO PERFORMANCE ISSUE.

WIRING CHART

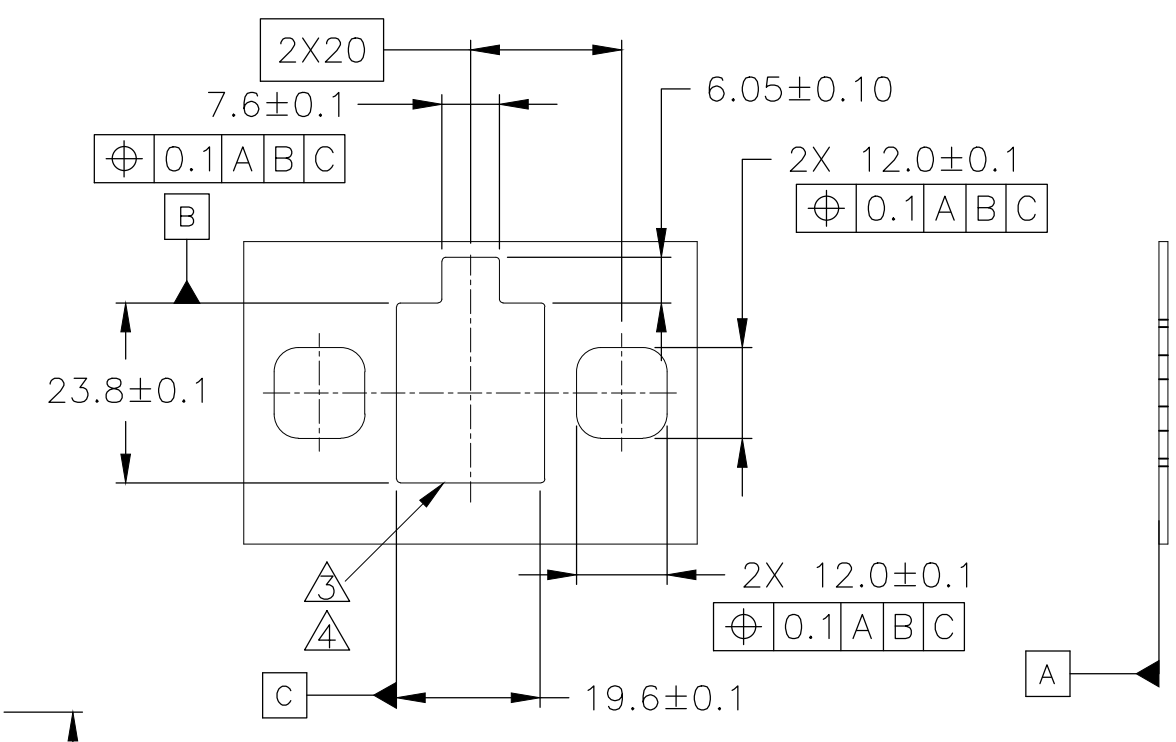
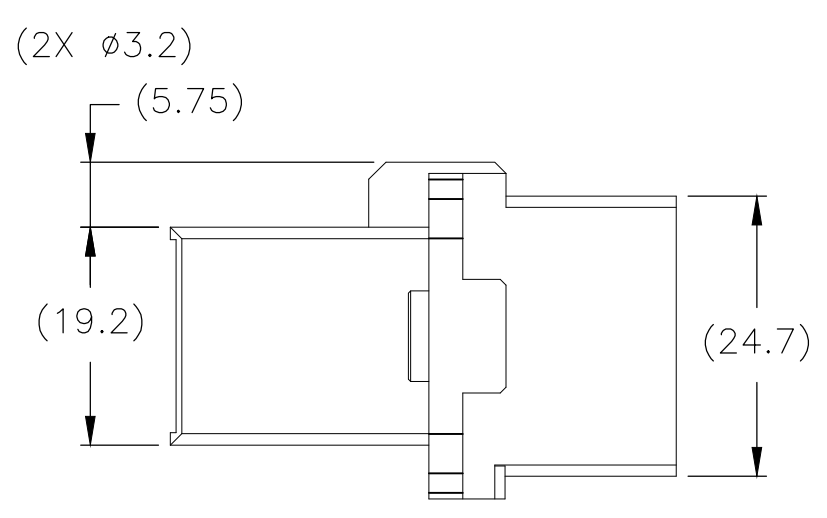
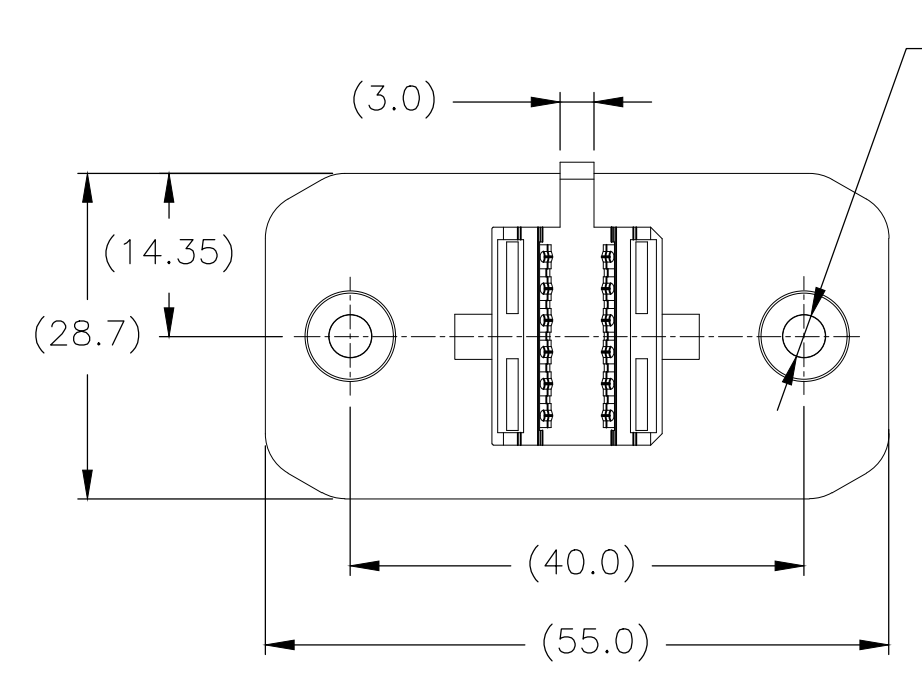
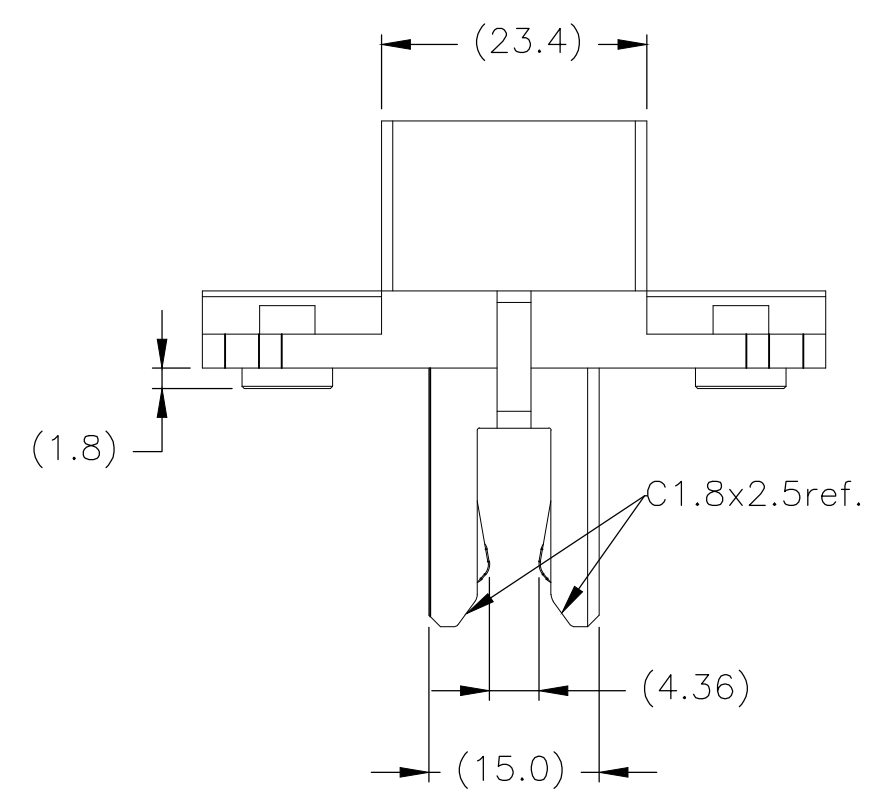
ITEM	FROM	TO	ITEM	WIRE
6	J1-P1	J2	1	2,BLACK
	J1-P2	J3		3,RED

AR	MR	DESCRIPTION	QTY
		2311291-2	400±10
		2311291-1	85±5
		TE P/N	L
		N/A	
		N/A	
AR	MR	H.S.TUBE BLACK	13
AR	MR	H.S.TUBE RED	12
1	PC	LABEL	11
2	PC	WASHER	10
2	PC	SCREW M3*11.4	9
2	PC	METAL CLIP	8
2	PC	2ND LOCK	7
2	PC	BUS-BAR CONTACT	6
2	PC	NUT M3	5
1	PC	BUS-BAR HOUSING	4
AR	MR	WIRE 6AWG RED SUPER FLEXIBLE	3
AR	MR	WIRE 6AWG BLACK SUPER FLEXIBLE	2
2	PC	CORD END TERMINAL, TE 2-966067-6	1
QTY	U/M	DESCRIPTION	ITEM

THIS DRAWING IS A CONTROLLED DOCUMENT.		DWN ADAM CHEN 31OCT2016	TE Connectivity Cable AssY, 48V IT Gear													
DIMENSIONS: mm		CHK - APVD DAVID ZHANG 31OCT2016														
TOLERANCES UNLESS OTHERWISE SPECIFIED:		PRODUCT SPEC -	NAME													
<table border="0"> <tr><td>0 PLC</td><td>± -</td></tr> <tr><td>1 PLC</td><td>± -</td></tr> <tr><td>2 PLC</td><td>± -</td></tr> <tr><td>3 PLC</td><td>± -</td></tr> <tr><td>4 PLC</td><td>± -</td></tr> <tr><td>ANGLES</td><td>± -</td></tr> </table>		0 PLC	± -	1 PLC	± -	2 PLC	± -	3 PLC	± -	4 PLC	± -	ANGLES	± -	APPLICATION SPEC -	RESTRICTED TO	
0 PLC	± -															
1 PLC	± -															
2 PLC	± -															
3 PLC	± -															
4 PLC	± -															
ANGLES	± -															
MATERIAL -		FINISH -	WEIGHT 0	SIZE A3												
		CUSTOMER DRAWING		CAGE CODE 00779	DRAWING NO G-2311291											
		SCALE NTS		SHEET 1 OF 2	REV A											

THIS DRAWING IS UNPUBLISHED. RELEASED FOR PUBLICATION
 © COPYRIGHT - By - ALL RIGHTS RESERVED.

REVISIONS					
P	LTR	DESCRIPTION	DATE	DWN	APVD
-	-	SEE SHEET 1	-	-	-



RECOMMEND PANEL LAYOUT THICKNESS=1.2±0.05mm

11. LEAD IN SPECIFICATION OF THIS IT GEAR CONNECTOR IS +/-2mm MAX. WHEN MATING WITH OCP DEFINED 6mm THICK BUS-BAR.

PRODUCT AND PROCESSING MUST MEET REQUIREMENTS OF TE CONNECTIVITY ENVIRONMENTAL STANDARD TEC-138-702

THIS DRAWING IS A CONTROLLED DOCUMENT.		DWN ADAM CHEN 31OCT2016	TE Connectivity		
DIMENSIONS: mm		CHK - APVD DAVID ZHANG 31OCT2016			
TOLERANCES UNLESS OTHERWISE SPECIFIED:		PRODUCT SPEC -	APPLICATION SPEC -		
0 PLC ± - 1 PLC ± - 2 PLC ± - 3 PLC ± - 4 PLC ± - ANGLES ± -		WEIGHT 0	SIZE A3	CAGE CODE 00779	DRAWING NO C-2311291
MATERIAL -		FINISH -		RESTRICTED TO -	SCALE NTS
CUSTOMER DRAWING				SHEET 2 OF 2	REV A