



Chipsmall Limited consists of a professional team with an average of over 10 year of expertise in the distribution of electronic components. Based in Hongkong, we have already established firm and mutual-benefit business relationships with customers from,Europe,America and south Asia,supplying obsolete and hard-to-find components to meet their specific needs.

With the principle of "Quality Parts,Customers Priority,Honest Operation,and Considerate Service",our business mainly focus on the distribution of electronic components. Line cards we deal with include Microchip,ALPS,ROHM,Xilinx,Pulse,ON,Everlight and Freescale. Main products comprise IC,Modules,Potentiometer,IC Socket,Relay,Connector.Our parts cover such applications as commercial,industrial, and automotives areas.

We are looking forward to setting up business relationship with you and hope to provide you with the best service and solution. Let us make a better world for our industry!



Contact us

Tel: +86-755-8981 8866 Fax: +86-755-8427 6832

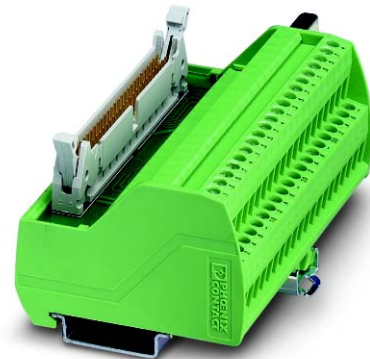
Email & Skype: info@chipsmall.com Web: www.chipsmall.com

Address: A1208, Overseas Decoration Building, #122 Zhenhua RD., Futian, Shenzhen, China



VIP-2/SC/...FLK...

VARIOFACE Professional for system cabling applications



Data sheet
2521_en_D

© PHOENIX CONTACT 2014-08-08

1 Description

Incorporating a contemporary industrial design, VARIOFACE Professional (VIP) offers a next-generation approach to passive 1:1 wiring for applications that utilize a system approach to cabling. By combining a VARIOFACE front adapter, VARIOFACE system cable and VARIOFACE Professional module, the end-user saves valuable time in installing and troubleshooting a system. VARIOFACE Professional is available in both 8- and 32-channel configurations and for Siemens' SIMATIC® S7-specific variants.

To aid in device identification in the switch cabinet, VARIOFACE Professional integrates a channel that can utilize the full range of ZB holders to provide flexible module marking options. VARIOFACE Professional also offers easy access to field I/O marking by providing signal marking on the screw connection surface. The module's single, rugged metal mounting foot moves along the length of the module, facilitating ease of installation and disconnection, and the added benefit of positioning the module for efficient wiring.

2 Features

- Compact design reduces space requirements in the control cabinet
- I/O marking for field wiring clearly identified when device is mounted
- Integrated ZB channel allows flexible marking of device
- A single, metal mounting foot allows easy installation and removal to the mounting rail
- Movable mounting foot allows flexible module positioning during wire installation



Make sure you always use the latest documentation.
It can be downloaded at phoenixcontact.com.



This data sheet is valid for all products listed on the following page:

3 Ordering data

Products

Description	Type	Order No.	Pcs. / Pkt.
VARIOFACE Professional module for 8 channels, 14 position	VIP-2/SC/FLK14/PLC	2315214	1
VARIOFACE Professional module for 32 channels, 50 position	VIP-2/SC/FLK50/PLC	2315227	1
VARIOFACE Professional module for SIMATIC S7-300, 8 channels, two 14-position connectors	VIP-2/SC/2FLK14(1-20)/S7	2315230	1
VARIOFACE Professional module for SIMATIC S7-300, 32 channels, 50 position	VIP-2/SC/FLK50(1-40)/S7	2315243	1

4 Technical data

General data

Ambient temperature range (operating)	-20 to 50°C
Ambient temperature range (storage/transport)	-20 to 70°C
Humidity, permissible	95% non-condensing
Altitude, maximum	2000 m
Intended use	Indoors
Pollution degree	2
Mounting	NS 35 (EN 50022), any orientation
Surge voltage category	II

Electrical data

Operating voltage, U_N (IEC)	60 V AC/DC
Operating voltage, U_N (CSA, UL)	125 V AC/DC
Permissible current, maximum per pin	1 A

Connection data

Connection type	Screw
Stripping length	8 mm
Distribution connection data (solid/stranded/AWG)	0.2-4.0 mm ² /0.2-2.5 mm ² /24-12 AWG
Screw thread	M3
Tightening torque	0.5-0.6 Nm

Conformance/Approvals

Air creepage distances	IEC 60664, DIN EN 50178, IEC 62103
UL/cUL	UL 508 (E238705)
CSA	61010-01: 04

Dimensions

	Width	Depth	Height
VIP-2/SC/FLK14/PLC	39.8	56.0	65.5
VIP-2/SC/FLK50/PLC	106.1	56.0	65.5
VIP-2/SC/2FLK14(1-20)/S7	80.6	56.0	65.5
VIP-2/SC/FLK50(1-40)/S7	106.1	56.0	65.5

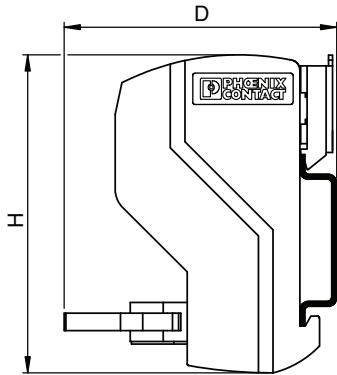


Figure 1 VIP-2/SC/...FLK... dimensions

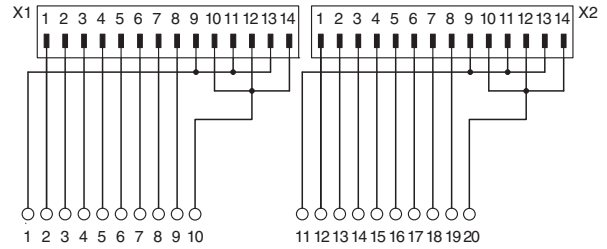


Figure 4 VIP-2/SC/2FLK14 (1-20) S7 circuit diagram

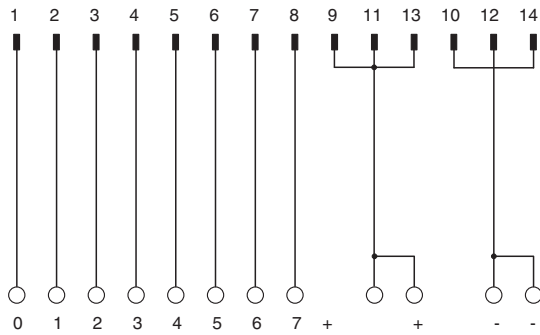


Figure 2 VIP-2/SC/FLK14/PLC circuit diagram

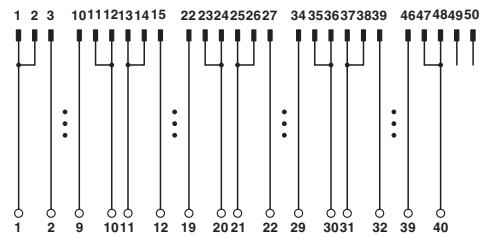


Figure 5 VIP-2/SC/FLK50 (1-40) S7 circuit diagram

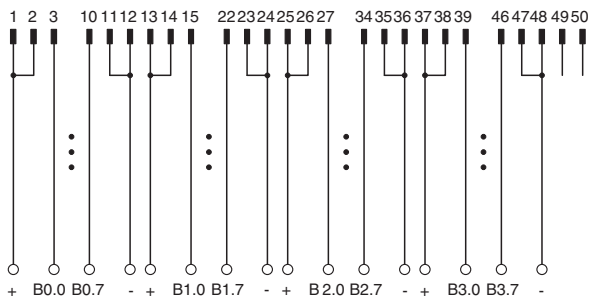


Figure 3 VIP-2/SC/FLK50/PLC circuit diagram