



Chipsmall Limited consists of a professional team with an average of over 10 year of expertise in the distribution of electronic components. Based in Hongkong, we have already established firm and mutual-benefit business relationships with customers from,Europe,America and south Asia,supplying obsolete and hard-to-find components to meet their specific needs.

With the principle of “Quality Parts,Customers Priority,Honest Operation,and Considerate Service”,our business mainly focus on the distribution of electronic components. Line cards we deal with include Microchip,ALPS,ROHM,Xilinx,Pulse,ON,Everlight and Freescale. Main products comprise IC,Modules,Potentiometer,IC Socket,Relay,Connector.Our parts cover such applications as commercial,industrial, and automotives areas.

We are looking forward to setting up business relationship with you and hope to provide you with the best service and solution. Let us make a better world for our industry!



## Contact us

Tel: +86-755-8981 8866 Fax: +86-755-8427 6832

Email & Skype: info@chipsmall.com Web: www.chipsmall.com

Address: A1208, Overseas Decoration Building, #122 Zhenhua RD., Futian, Shenzhen, China



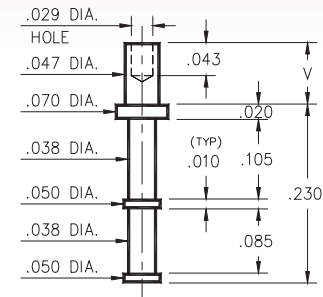
# MALE PCB PINS

## SOLDER TERMINAL TURRETS

### 2110

2110-X-00-XX-00-00-07-0

Swage mount in .052 hole

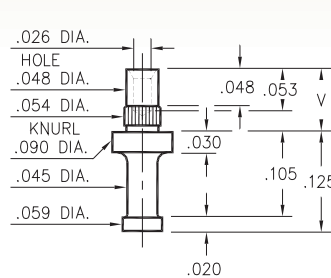


Basic Part Number	Board Thickness	Length V
2110-1	.031	.049
2110-2	.062	.082

### 2333

2333-X-00-XX-00-00-07-0

Press-fit & swage in .052 mounting hole

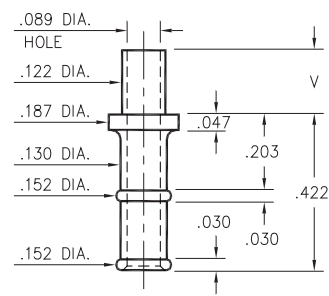


Basic Part Number	Board Thickness	Length V
2333-1	.078	.103
2333-2	.062	.087
2333-3	.047	.072

### 2821

2821-X-00-XX-00-00-07-0

Swage mount in .125 hole

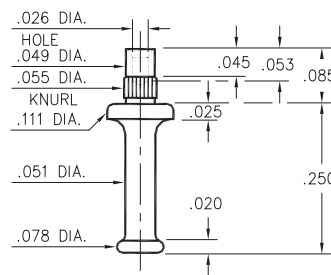


Basic Part Number	Board Thickness	Length V
2821-2	.062	.109
2821-3	.094	.141
2821-4	.125	.172

### 2533

2533-0-00-XX-00-00-07-0

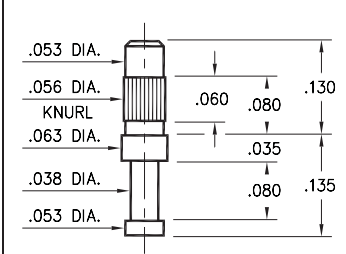
Press-fit & swage in .052 mounting hole  
For a .062 thick board



### 2101

2101-3-00-XX-00-00-07-0

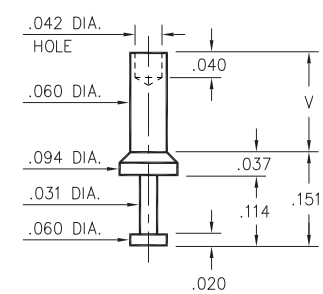
Press-fit in .053 mounting hole  
For a .062 to .094 thick board



### 2316

2316-X-00-XX-00-00-07-0

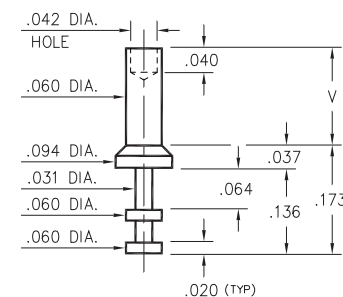
Swage mount in .064 hole



### 2317

2317-X-00-XX-00-00-07-0

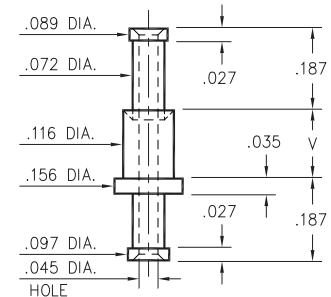
Swage mount in .064 hole



### 2708

2708-X-00-XX-00-00-07-0

Swage mount in .120 hole



Basic Part Number	Board Thickness	Length V
2XXX-1	.031	.062
2XXX-2	.062	.094
2XXX-3	.094	.125
2XXX-4	.125	.156

#### SPECIFICATIONS:

**Pin Material:** Brass Alloy 360, 1/2 Hard  
(Swage pins are annealed)

**Dimensions:** Inches

**Tolerances On:** Lengths: ±.005  
Diameters: ±.002  
Angles: ±2°



ORDER CODE: **XXXX - X - 00 - XX - 00 - 00 - 07 - 0**

BASIC PART #

SPECIFY PIN FINISH:

- 01 200 μ" TIN/LEAD OVER NICKEL
- ◆ 80 200 μ" TIN OVER NICKEL (RoHS)
- ◆ 44 300 μ" SILVER OVER COPPER (RoHS)
- 50 300 μ" ELECTRO-SOLDER (60/40 SnPb)

