



Chipsmall Limited consists of a professional team with an average of over 10 year of expertise in the distribution of electronic components. Based in Hongkong, we have already established firm and mutual-benefit business relationships with customers from,Europe,America and south Asia,supplying obsolete and hard-to-find components to meet their specific needs.

With the principle of "Quality Parts,Customers Priority,Honest Operation,and Considerate Service",our business mainly focus on the distribution of electronic components. Line cards we deal with include Microchip,ALPS,ROHM,Xilinx,Pulse,ON,Everlight and Freescale. Main products comprise IC,Modules,Potentiometer,IC Socket,Relay,Connector.Our parts cover such applications as commercial,industrial, and automotives areas.

We are looking forward to setting up business relationship with you and hope to provide you with the best service and solution. Let us make a better world for our industry!



Contact us

Tel: +86-755-8981 8866 Fax: +86-755-8427 6832

Email & Skype: info@chipsmall.com Web: www.chipsmall.com

Address: A1208, Overseas Decoration Building, #122 Zhenhua RD., Futian, Shenzhen, China



THIS DRAWING IS UNPUBLISHED. RELEASED FOR PUBLICATION 20
 © COPYRIGHT 20 BY - ALL RIGHTS RESERVED.

REVISIONS				
P	LTR	DESCRIPTION	DATE	APVD
	A	RELEASE FOR PRODUCTION	07MAY2018	RS MK

ABSOLUTE MAXIMUM RATINGS	SYMBOL	MIN	MAX	UNIT
STORAGE TEMPERATURE	T _{stg}	-40	85	°C
POWER SUPPLY INPUT VOLTAGE	V _{dd}	3.1	3.5	VDC
TOTAL SYSTEM CURRENT DRAW	I _d	x	10	mA

ELECTRICAL CHARACTERISTICS	MIN	MAX	UNIT
ANALOG AUDIO OUTPUT SENSITIVITY	-25	-19	dBV
ANALOG AUDIO OUTPUT FREQ RANGE	100	10k	Hz

ENVIRONMENTAL CHARACTERISTICS	MIN	MAX	UNIT
OPERATING TEMPERATURE	-5	50	°C
RELATIVE HUMIDITY OPERATING, NON-CONDENSING ENVIRONMENT	5	95	%

ITEM: SENSOR	SENSOR PERFORMANCE
1: TEMPERATURE	-5°C TO +50°C ±0.3°C ACCURACY, 1 SECOND ACQUISITION RATE
2: RELATIVE HUMIDITY	5% TO 95% RH, 2% ACCURACY, 1 SECOND ACQUISITION RATE
3: MOTION	INTERRUPT DRIVEN, RESPONSE <0.5 SECS.
4: AMBIENT LIGHT LEVELS	1 SECOND ACQUISITION RATE
5: MICROPHONE	INTERRUPT DRIVEN, RESPONSE <0.5 SECS.

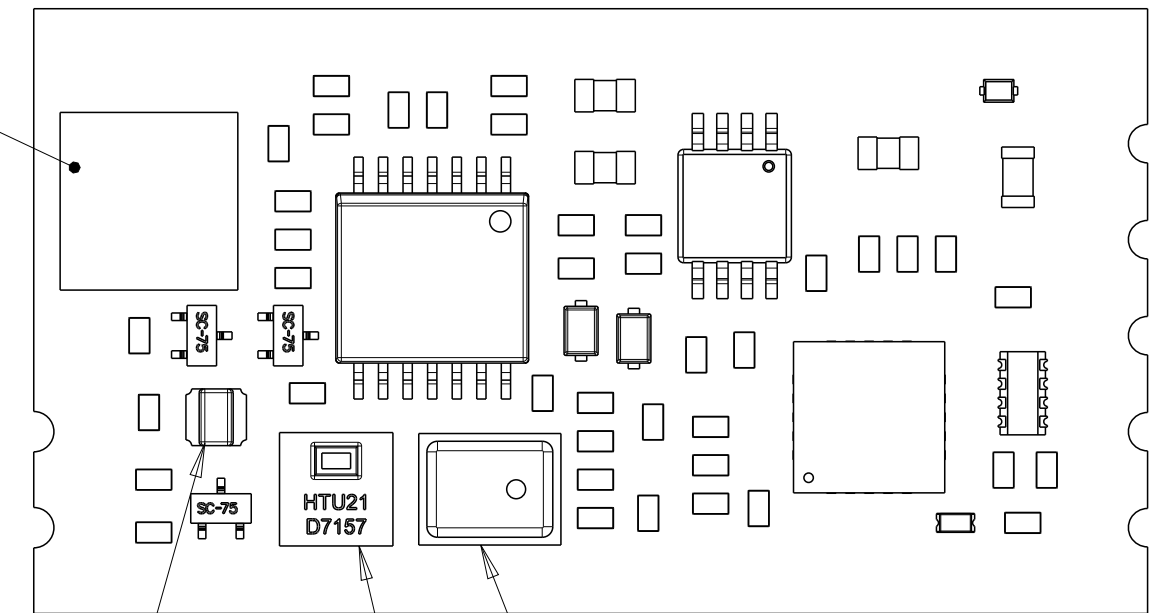
NOTES:

1. THIS PRODUCT HAS NOT COMPLETED VALIDATION TESTING.
2. MUST COMPLY WITH DIRECTIVE 2002/95/EC (ROHS).
3. SEPARATE LENS IS AVAILABLE UNDER TE P/N: 2317697-1.

3

3

3

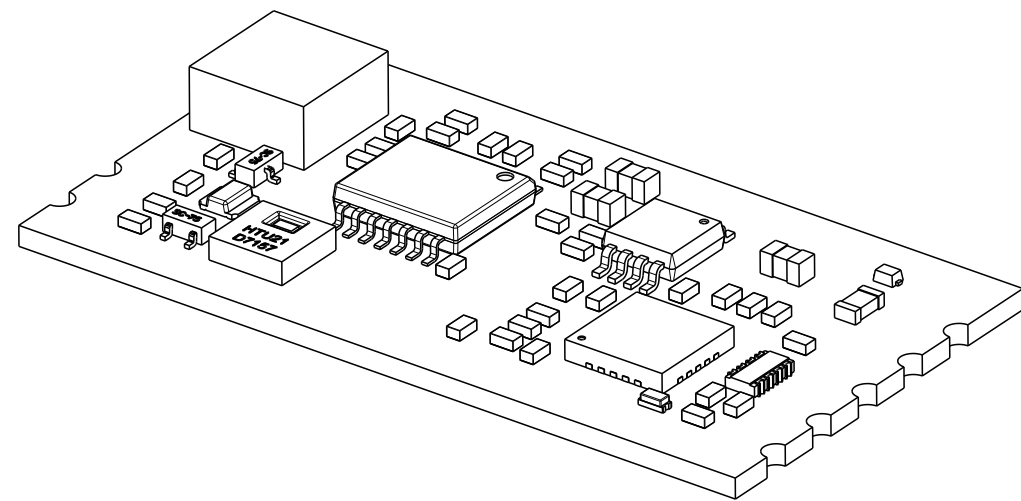


4

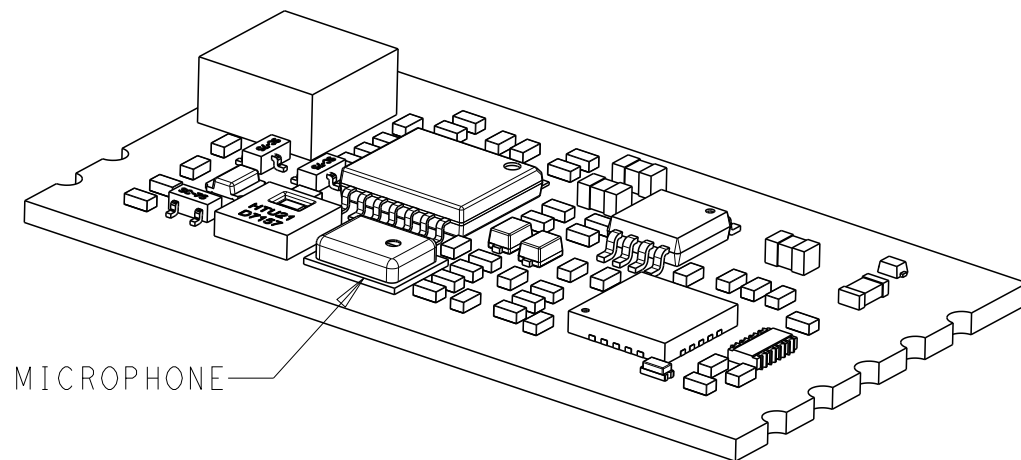
5

1

2



2316851-1 SHOWN



MICROPHONE

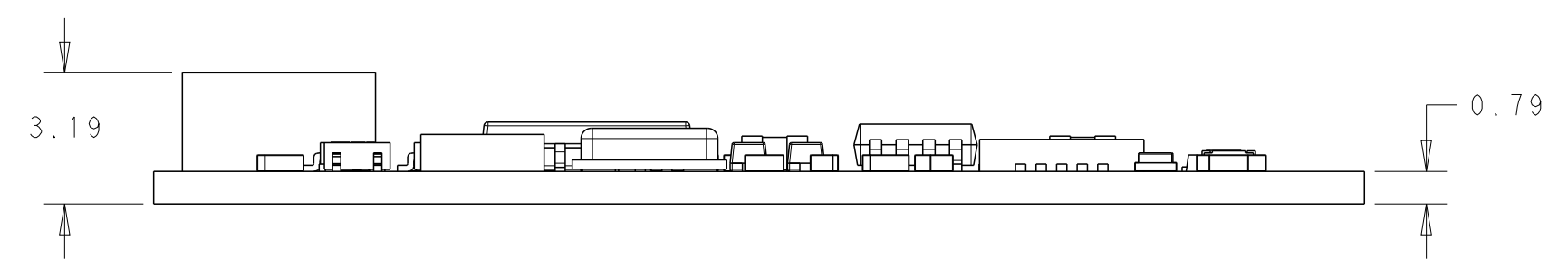
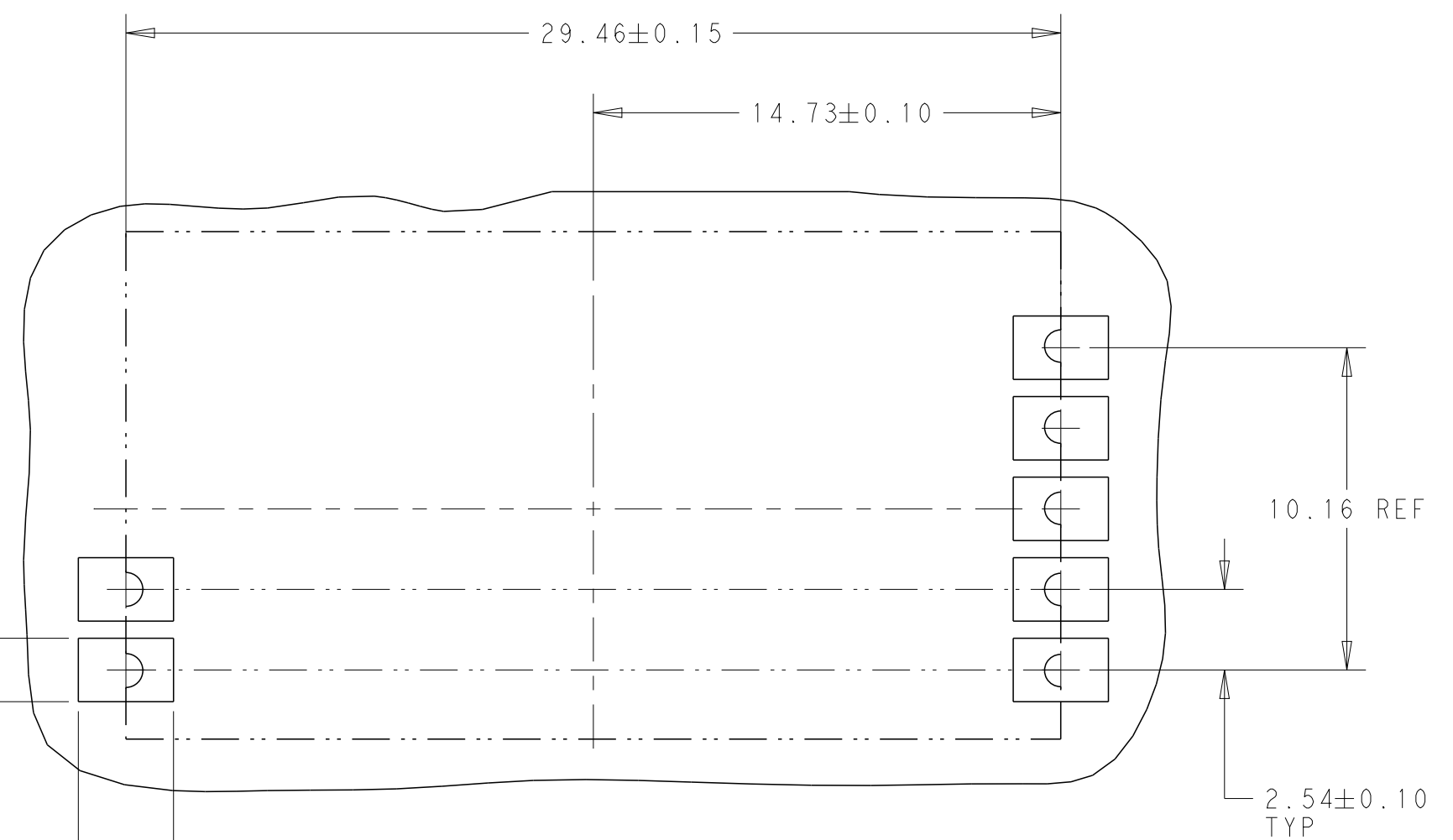
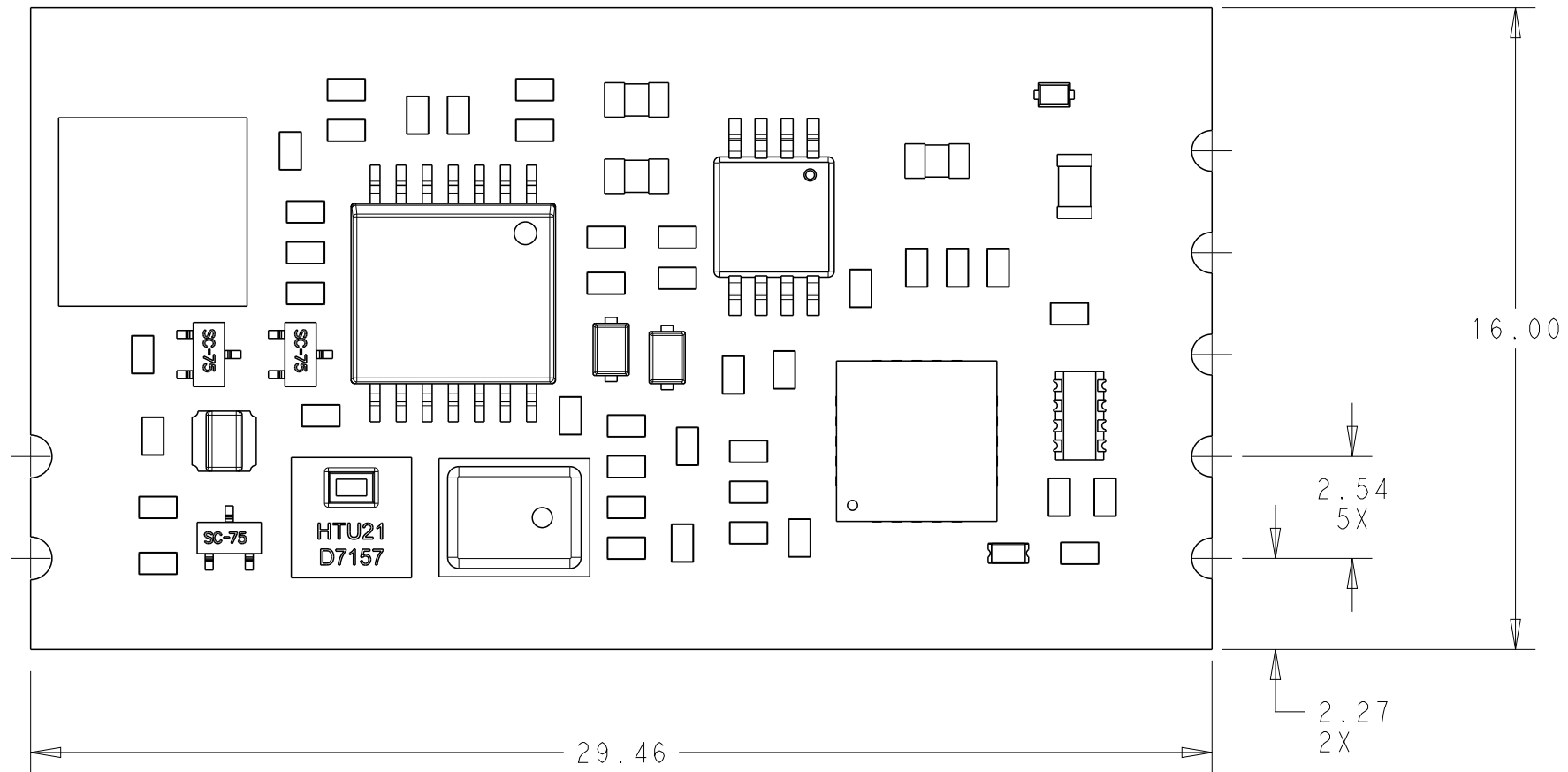
2316851-2 SHOWN


w/MICROPHONE	A	2316851-2
w/o MICROPHONE	A	2316851-1
COMMENTS	REV	PART NO.

THIS DRAWING IS A CONTROLLED DOCUMENT.		DWN J. SHAFFER 16 JUN 2017	TE Connectivity	
		CHK C. GINGRICH 16 JUN 2017		
DIMENSIONS: mm		TOLERANCES UNLESS OTHERWISE SPECIFIED:		NAME AMBIMATE, MSM4 SENSOR MODULE, CASTELLATION
		0 PLC ±	1 PLC ±0.4	PRODUCT SPEC 108-133092
		2 PLC ±0.25	3 PLC ±	APPLICATION SPEC 114-133092
		4 PLC ±	ANGLES ±	SIZE A2
MATERIAL -		FINISH -	WEIGHT -	CAGE CODE -
				DRAWING NO G-2316851
				RESTRICTED TO -
				SCALE 3:1 SHEET 1 OF 2 REV A
				CUSTOMER DRAWING

THIS DRAWING IS UNPUBLISHED. RELEASED FOR PUBLICATION 20
 © COPYRIGHT 20 BY - ALL RIGHTS RESERVED.

REVISIONS				
P	LTR	DESCRIPTION	DATE	APVD
-	-	SEE SHEET 1	-	-



THIS DRAWING IS A CONTROLLED DOCUMENT.		DWN J. SHAFFER 16 JUN 2017	 TE Connectivity	
DIMENSIONS: mm		CHK C. GINGRICH 16 JUN 2017		
TOLERANCES UNLESS OTHERWISE SPECIFIED:		APVD -	NAME AMBIMATE, MSM4 SENSOR MODULE, CASTELLATION	
0 PLC ±	1 PLC ±0.4	PRODUCT SPEC 108-133092	SIZE A2	CAGE CODE -
2 PLC ±0.25	3 PLC ±	APPLICATION SPEC 114-133092	DRAWING NO C-2316851	RESTRICTED TO -
4 PLC ±	ANGLES ±	WEIGHT -	SCALE 3:1	SHEET 2 OF 2
MATERIAL -	FINISH -	CUSTOMER DRAWING	REV A	