



Chipsmall Limited consists of a professional team with an average of over 10 year of expertise in the distribution of electronic components. Based in Hongkong, we have already established firm and mutual-benefit business relationships with customers from,Europe,America and south Asia,supplying obsolete and hard-to-find components to meet their specific needs.

With the principle of "Quality Parts,Customers Priority,Honest Operation,and Considerate Service",our business mainly focus on the distribution of electronic components. Line cards we deal with include Microchip,ALPS,ROHM,Xilinx,Pulse,ON,Everlight and Freescale. Main products comprise IC,Modules,Potentiometer,IC Socket,Relay,Connector.Our parts cover such applications as commercial,industrial, and automotives areas.

We are looking forward to setting up business relationship with you and hope to provide you with the best service and solution. Let us make a better world for our industry!



Contact us

Tel: +86-755-8981 8866 Fax: +86-755-8427 6832

Email & Skype: info@chipsmall.com Web: www.chipsmall.com

Address: A1208, Overseas Decoration Building, #122 Zhenhua RD., Futian, Shenzhen, China



Front adapters - FLKM 50-PA-GE/TKFC/RXI - 2321473

Please be informed that the data shown in this PDF Document is generated from our Online Catalog. Please find the complete data in the user's documentation. Our General Terms of Use for Downloads are valid (<http://phoenixcontact.com/download>)



VARIOFACE front adapter, for GE Fanuc PACSystems RX3i, max. 1 x 32 channels can be connected.

Product Features

- Can be plugged onto I/O modules
- Connection via suitable VARIOFACE termination boards
- Transmission of a maximum of 32 channels via a 50-pos. system cable



Key commercial data

Packing unit	1 pc
Weight per Piece (excluding packing)	140.0 GRM
Custom tariff number	85369010
Country of origin	Germany

Technical data

General

Nominal voltage U_N	< 50 V AC
	60 V DC
Max. permissible current	1 A (per path)
	8 A (per connection, supply via separate power supply)
Channels which can be connected	32
Connection type, connector	IDC/FLK pin strip (2.54 mm)
Number of connectors	1
No. of positions, connector	50
Number of positions	50
Mounting position	any
Standards/regulations	DIN EN 50178

Front adapters - FLKM 50-PA-GE/TKFC/RXI - 2321473

Technical data

General

	IEC 60664
	IEC 62103
Pollution degree	2
Surge voltage category	II

Ambient conditions

Ambient temperature (operation)	-20 °C ... 50 °C
Ambient temperature (storage/transport)	-20 °C ... 70 °C

Connection data, power supply

Connection method	Pluggable spring-cage connection
Conductor cross section stranded min.	0.2 mm ²
Conductor cross section stranded max.	2.5 mm ²
Conductor cross section solid min.	0.2 mm ²
Conductor cross section solid max.	2.5 mm ²
Conductor cross section AWG/kcmil min.	24
Conductor cross section AWG/kcmil max	12

Supported controller

Controller	GE-FANUC RX3i
- suitable I/O card	IC694MDL754
	IC695ALG608
	IC695ALG616
	IC695ALG626
	IC695ALG628
	IC695ALG704
	IC695ALG708
	IC695ALG728

Classifications

eCl@ss

eCl@ss 4.0	27060306
eCl@ss 4.1	27060306
eCl@ss 5.0	27061801
eCl@ss 5.1	27061801
eCl@ss 6.0	27061801
eCl@ss 7.0	27061801
eCl@ss 8.0	27061801

Front adapters - FLKM 50-PA-GE/TKFC/RXI - 2321473

Classifications

ETIM

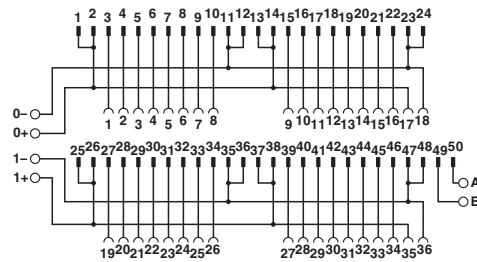
ETIM 2.0	EC000237
ETIM 3.0	EC000237
ETIM 4.0	EC000237
ETIM 5.0	EC002584

UNSPSC

UNSPSC 6.01	26121620
UNSPSC 7.0901	26121620
UNSPSC 11	26121620
UNSPSC 12.01	26121620
UNSPSC 13.2	26121620

Drawings

Circuit diagram



Connection scheme for FLKM 50-PA-GE/TKFC/RXI