



Chipsmall Limited consists of a professional team with an average of over 10 year of expertise in the distribution of electronic components. Based in Hongkong, we have already established firm and mutual-benefit business relationships with customers from,Europe,America and south Asia,supplying obsolete and hard-to-find components to meet their specific needs.

With the principle of “Quality Parts,Customers Priority,Honest Operation,and Considerate Service”,our business mainly focus on the distribution of electronic components. Line cards we deal with include Microchip,ALPS,ROHM,Xilinx,Pulse,ON,Everlight and Freescale. Main products comprise IC,Modules,Potentiometer,IC Socket,Relay,Connector.Our parts cover such applications as commercial,industrial, and automotives areas.

We are looking forward to setting up business relationship with you and hope to provide you with the best service and solution. Let us make a better world for our industry!



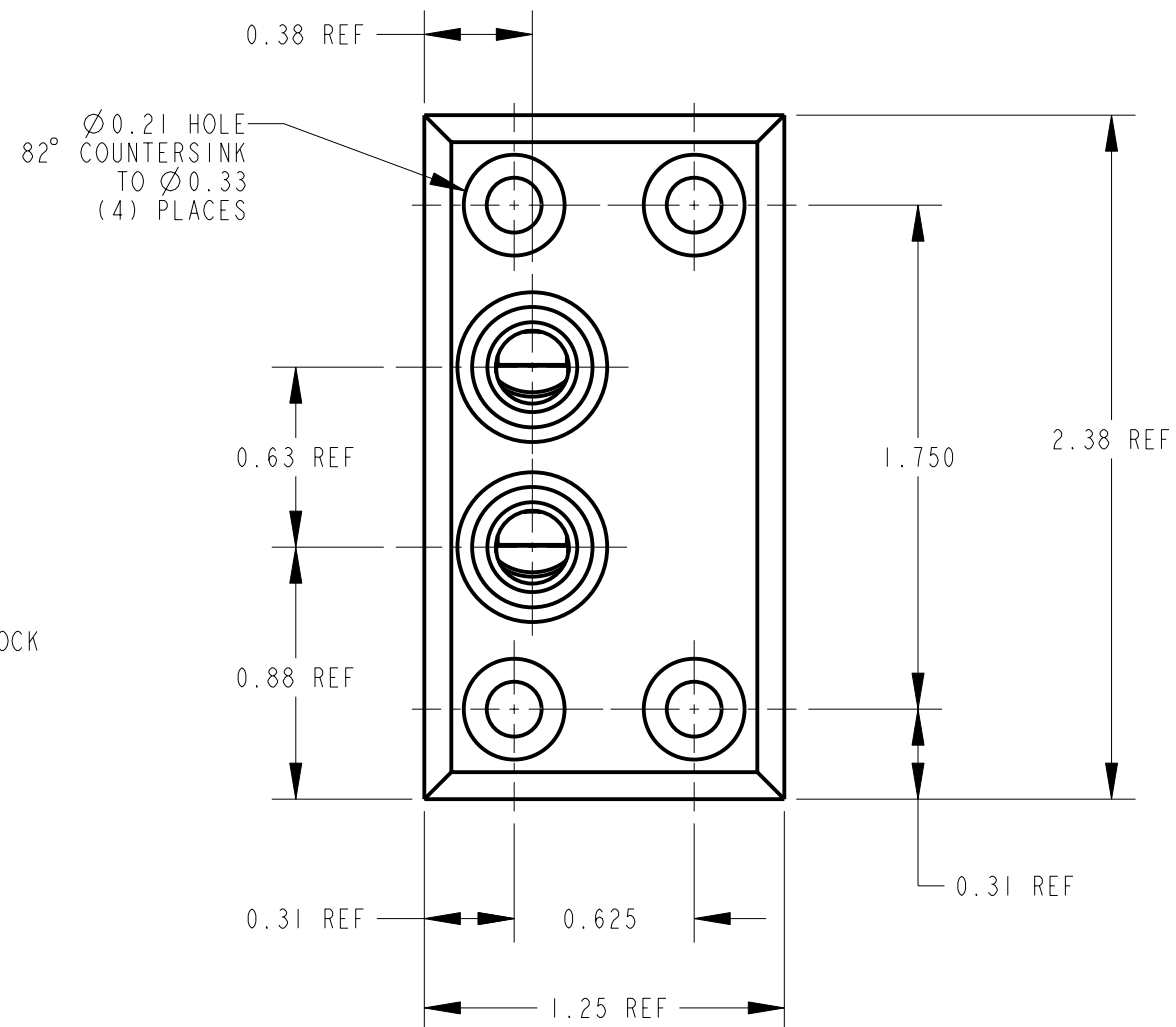
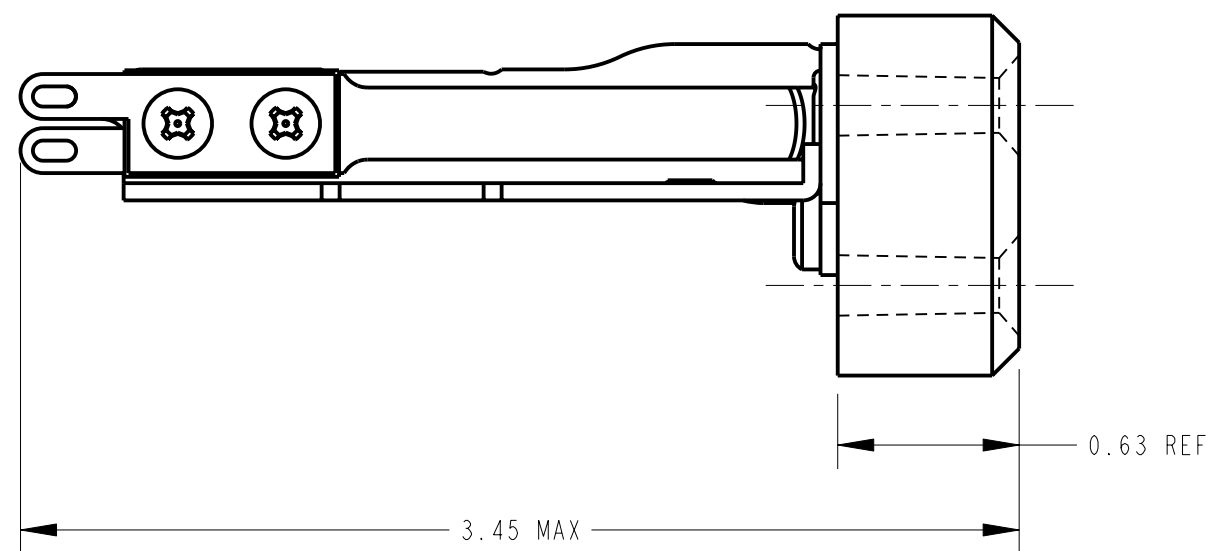
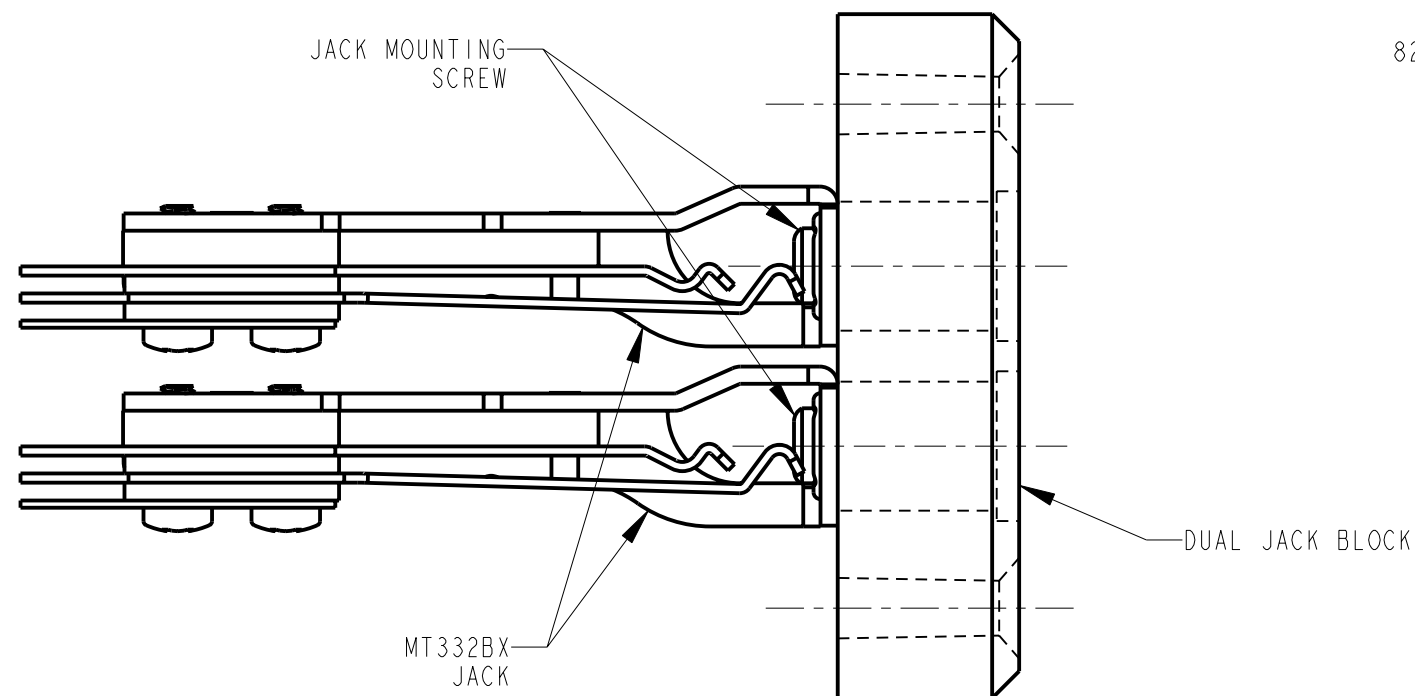
Contact us

Tel: +86-755-8981 8866 Fax: +86-755-8427 6832

Email & Skype: info@chipsmall.com Web: www.chipsmall.com

Address: A1208, Overseas Decoration Building, #122 Zhenhua RD., Futian, Shenzhen, China





NOTES:

- JACK MATES WITH PJ-051 PLUG.
- MATERIALS:
JACK:
FRAME: STEEL, NICKEL PLATED
BUSHING: BRASS, NICKEL PLATED
SPRINGS : NICKEL SILVER, SPRING TEMPERED
TERMINAL: STEEL, TIN PLATED
SPACERS: PHENOLIC
LIFTER SPACER: THERMOPLASTIC
SCREWS: STEEL, NICKEL PLATED
JACK BLOCK: THERMOPLASTIC
- THIS PRODUCT IS RoHS COMPLIANT.

CUSTOMER DRAWING

					★ STAR SYMBOL DENOTES CRITICAL DIMENSION	THIS DRAWING DESCRIBES A DESIGN CONSIDERED PROPRIETARY IN NATURE, DEVELOPED AND MANUFACTURED BY SWITCHCRAFT INC. AND IS RELEASED ON A CONFIDENTIAL BASIS FOR IDENTIFICATION PURPOSES ONLY.				
					UNLESS OTHERWISE SPECIFIED	SIZE	WIDTH	MULT	LBS/M	TEMPER
					1. ALL DIMENSIONS IN INCHES - TWO PLACE DECIMALS ±0.01 - THREE PLACE DECIMALS ±0.005 - ANGLES ±1° - ALL DIA. CONCENTRIC WITHIN 0.005 T.I.R.	FINISH SPEC No.			MATERIAL SPEC No.	
					2. FEATURES ON THE SAME CENTERLINE MUST BE ALIGNED WITHIN ±0.002	FIRST USED ON		SCALE 3:2		Switchcraft®
					3. REMOVE ALL BURRS	DATE DRAWN	BY	CHKD	APVD	
A	25255	1-17-06	TJK	TJK		01-Dec-08	TJK	TJK 12-1-08	TJK 12-1-08	SHEET 1 OF 1
REV	ECO NUMBER	DATE	BY	APVD		NAME			PART No.	REV
REVISIONS					DO NOT SCALE DRAWING	DUAL JACK BLOC ASS'Y, RoHS			2332BX	A