



Chipsmall Limited consists of a professional team with an average of over 10 year of expertise in the distribution of electronic components. Based in Hongkong, we have already established firm and mutual-benefit business relationships with customers from,Europe,America and south Asia,supplying obsolete and hard-to-find components to meet their specific needs.

With the principle of “Quality Parts,Customers Priority,Honest Operation,and Considerate Service”,our business mainly focus on the distribution of electronic components. Line cards we deal with include Microchip,ALPS,ROHM,Xilinx,Pulse,ON,Everlight and Freescale. Main products comprise IC,Modules,Potentiometer,IC Socket,Relay,Connector.Our parts cover such applications as commercial,industrial, and automotives areas.

We are looking forward to setting up business relationship with you and hope to provide you with the best service and solution. Let us make a better world for our industry!



Contact us

Tel: +86-755-8981 8866 Fax: +86-755-8427 6832

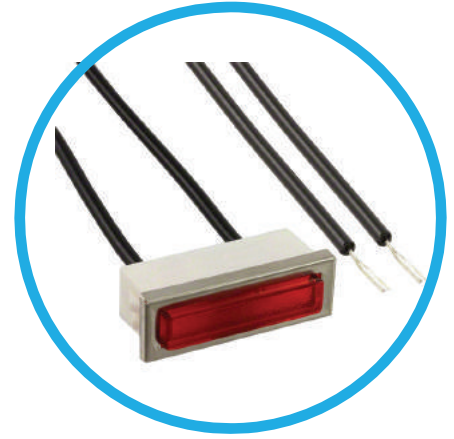
Email & Skype: info@chipsmall.com Web: www.chipsmall.com

Address: A1208, Overseas Decoration Building, #122 Zhenhua RD., Futian, Shenzhen, China





2330D and 2332D Series Non-Relampable Neon Panel Mount Indicator



Snapfit Rectangular Neon Wired Indicator Lights
For 0.400" x 1.280" mounting hole

Specifications

Mounting: Will snap-fit into cut-out 0.400" x 1.280" and will mount in .032" - .100" thick panel

Wire Leads: No. 22 AWG (105°C) 4.40"/4.80" long, stripped .430"/.570"

Lens: Polycarbonate

Anode(+): Red lead

Bezel: Stainless steel.

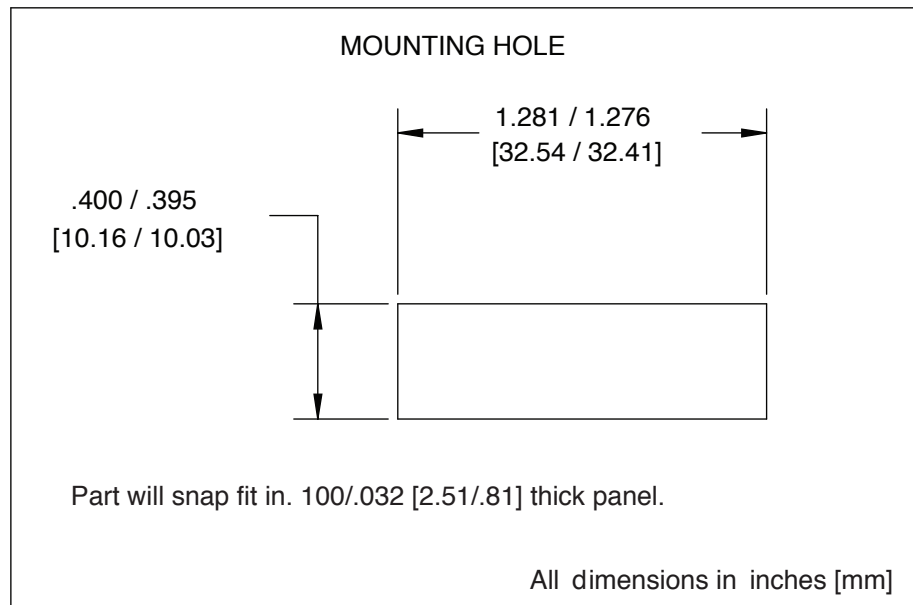
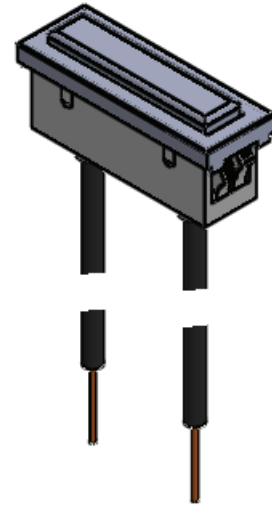
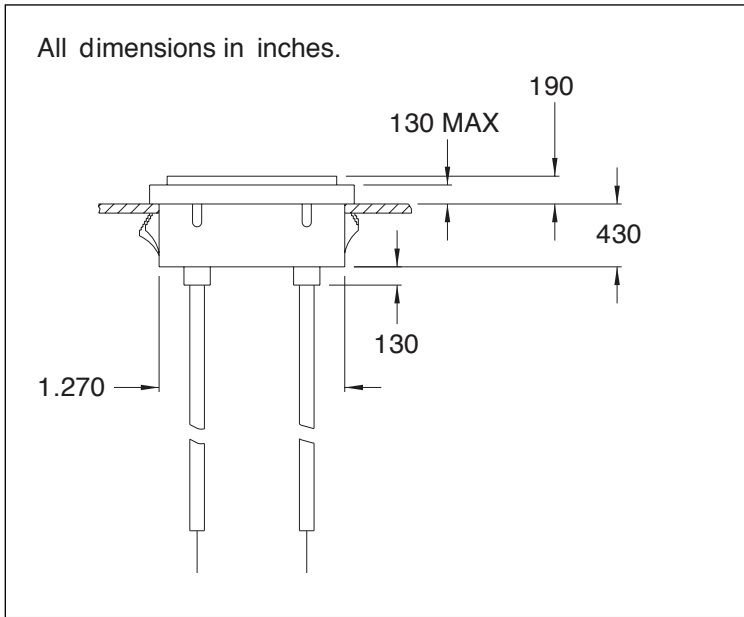
Underwriters Laboratories (UL) File No. E20356

Ordering Information

Lens Color	Model No. (105-125 VAC)	Lamp used
Red	2330D1	LT2-32-1 + Resistor
Green	2332D5	G2B + Resistor

Lamp	Maximum Breakdown Voltage			Design Current mA	Life Avg. Hours	Typ. R Ohms	Pre-Aged	Bulb Length Max. In.	Base
	VAC	VDC	Exting. Volts						
G2B	N/A	135	N/A	2.6	25,000	N/A	No	1 ¹ / ₁₆	1" Wire
LT2-32-1	95	135	N/A	1.4	N/A	N/A	N/A	N/A	N/A

Dimensions



Compliances and Approvals

