



Chipsmall Limited consists of a professional team with an average of over 10 year of expertise in the distribution of electronic components. Based in Hongkong, we have already established firm and mutual-benefit business relationships with customers from,Europe,America and south Asia,supplying obsolete and hard-to-find components to meet their specific needs.

With the principle of “Quality Parts,Customers Priority,Honest Operation,and Considerate Service”,our business mainly focus on the distribution of electronic components. Line cards we deal with include Microchip,ALPS,ROHM,Xilinx,Pulse,ON,Everlight and Freescale. Main products comprise IC,Modules,Potentiometer,IC Socket,Relay,Connector.Our parts cover such applications as commercial,industrial, and automotives areas.

We are looking forward to setting up business relationship with you and hope to provide you with the best service and solution. Let us make a better world for our industry!



## Contact us

Tel: +86-755-8981 8866 Fax: +86-755-8427 6832

Email & Skype: info@chipsmall.com Web: www.chipsmall.com

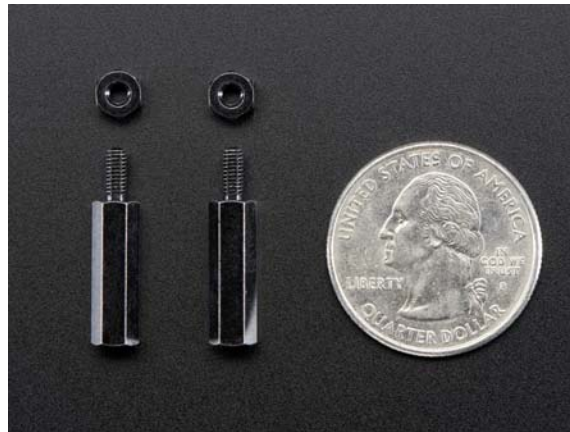
Address: A1208, Overseas Decoration Building, #122 Zhenhua RD., Futian, Shenzhen, China





## Brass M2.5 Standoffs 16mm tall - Black Plated - Pack of 2

PRODUCT ID: 2337



- **Description**

Finally we get our very own super sweet sixteen... 16 millimeters that is! Our **Black Plated M/F Brass 16mm Standoffs** are engineered specifically to keep your PiTFT or other Pi accessories with extra tall headers properly secured while also keeping the two boards separated. These standoffs can also be screwed into each other just like the 11mm versions (made for PiHATs).

Each order comes with two standoffs and two hex nuts.

**Raspberry Pi and PiTFTs are not included!**

- **Technical Details**

- Dimensions (one standoff): 16mm body x 6mm screw / 0.6" x 0.2"
- M2.5 screw size (both ends)
- Weight (one standoff): 2.5g

