



Chipsmall Limited consists of a professional team with an average of over 10 year of expertise in the distribution of electronic components. Based in Hongkong, we have already established firm and mutual-benefit business relationships with customers from,Europe,America and south Asia,supplying obsolete and hard-to-find components to meet their specific needs.

With the principle of "Quality Parts,Customers Priority,Honest Operation,and Considerate Service",our business mainly focus on the distribution of electronic components. Line cards we deal with include Microchip,ALPS,ROHM,Xilinx,Pulse,ON,Everlight and Freescale. Main products comprise IC,Modules,Potentiometer,IC Socket,Relay,Connector.Our parts cover such applications as commercial,industrial, and automotives areas.

We are looking forward to setting up business relationship with you and hope to provide you with the best service and solution. Let us make a better world for our industry!



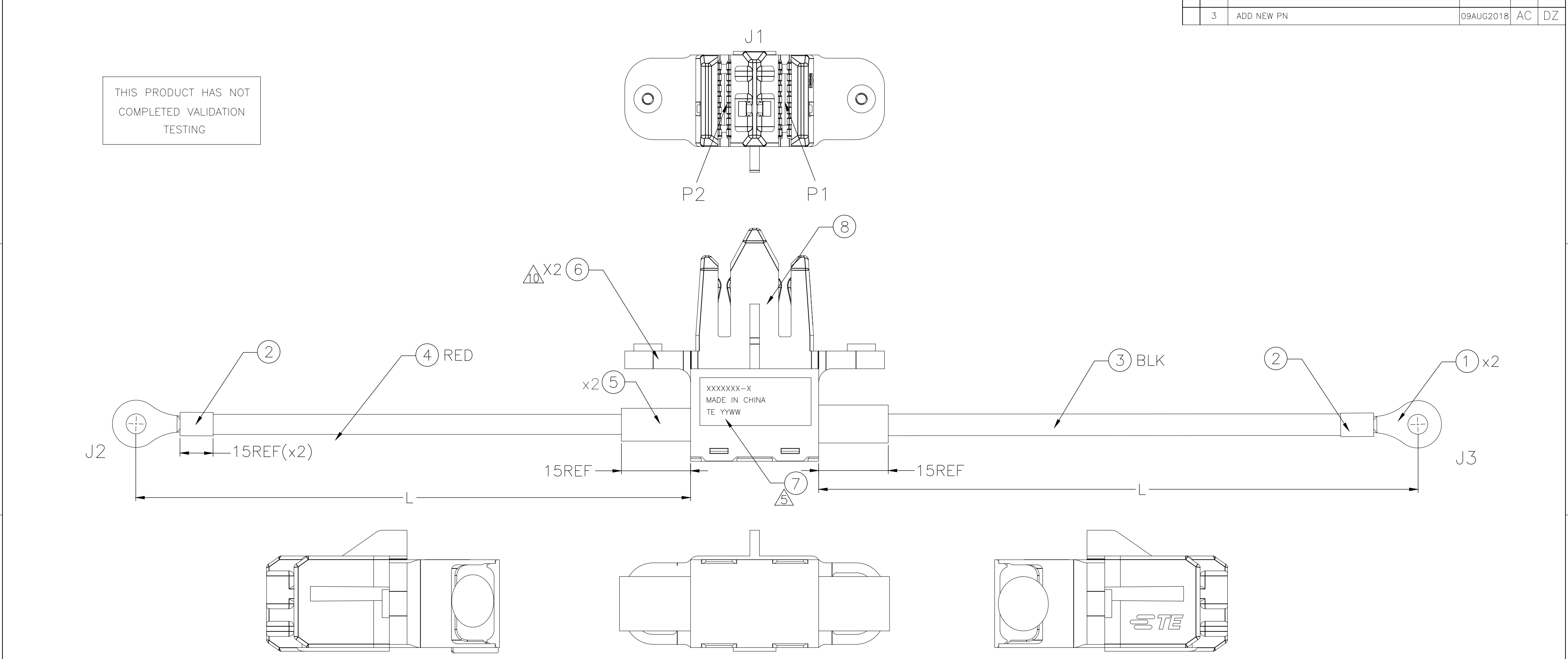
Contact us

Tel: +86-755-8981 8866 Fax: +86-755-8427 6832

Email & Skype: info@chipsmall.com Web: www.chipsmall.com

Address: A1208, Overseas Decoration Building, #122 Zhenhua RD., Futian, Shenzhen, China





NOTES:

1. 100% ELECTRICAL TEST FOR CONTINUITY, OPENS AND SHORTS.

2. THE MATED BUS-BAR SHOULD HAVE SURFACE ROUGHNESS Ra 1.6um MAX. SHOULD HAVE PLATING 3um MIN. SILVER IN CONTACT AREA, AND 1.27um MIN. Ni OVERALL.

3. SILVER PLATING CONTACT MAY DISCOLOR IN AIR, BUT NO PERFORMANCE ISSUE

4. LOW HALOGEN REQUEST: Br<900ppm, Cl<900ppm, Br+Cl<1500ppm PER HOMOGENEOUS MATERIAL

5. LABEL CONTENT AS SHOWN

XXXXXX-X
MADE IN CHINA
TE YYWW

TE P/N
YY: YEAR;WW: WEEK

6. WIRE ALLOWABLE CURRENT: 75A FOR 6AWG

7. OPERATING TEMPERATURE: -20C~80C

8. FLAMMABILITY: CONNECTOR MEET UL 94V-0, WIRE MEET VW-1

9. THE CABLE ASSEMBLY SHOULD BE UL AND RoHS2(2011/65/EU) COMPLIANT.

10. M3 NUT WITHSTAND 44N min. PUSH OUT FORCE IN HOUSING.

WIRING CHART

FROM	TO	WIRE
J1-P1	J3	BLACK
J1-P2	J2	RED

2337275-2

100±10

NA

2337275-1

250±10

NA

TE P/N

L

CUSTOMER P/N,REV.

3

1	PC	RA CCJ CONNECTOR TE 2326688-1	8	
1	PC	LABEL	7	
2	PC	M3 NUT	6	
AR	MR	HEAT SHRINK TUBE, BLACK	5	
AR	MR	UL WIRE 6AWG RED	4	
AR	MR	UL WIRE 6AWG BLACK	3	
AR	MR	HEAT SHRINK TUBE, BLACK	2	
2	PC	R-TERMINAL 6AWG M8	1	
-1	U/M			

THIS DRAWING IS A CONTROLLED DOCUMENT.

DWN
ADAM CHEN
CHK
-
APVD
DAVID ZHANG
PRODUCT SPEC
108-152035
APPLICATION SPEC
114-152042
WEIGHT
0
CUSTOMER DRAWING

DIMENSIONS:
mm

0 PLC ± -
1 PLC ± -
2 PLC ± 0.25
3 PLC ± -
4 PLC ± -
ANGLES ± -
FINISH
-

DWN
24MAY2018
CHK
-
APVD
24MAY2018
NAME
DAVID ZHANG
SIZE
A2
CAGE CODE
00779
DRAWING NO
C=2337275
RESTRICTED TO
-

TE Connectivity

Cable AssY, RA CCJ TO R TERMINAL

SCALE
N.T.S
SHEET
1 of 2
REV
3

PRODUCT AND PROCESSING MUST MEET REQUIREMENTS OF TE CONNECTIVITY ENVIRONMENTAL STANDARD TEC-138-702

1471-9 (1/15)

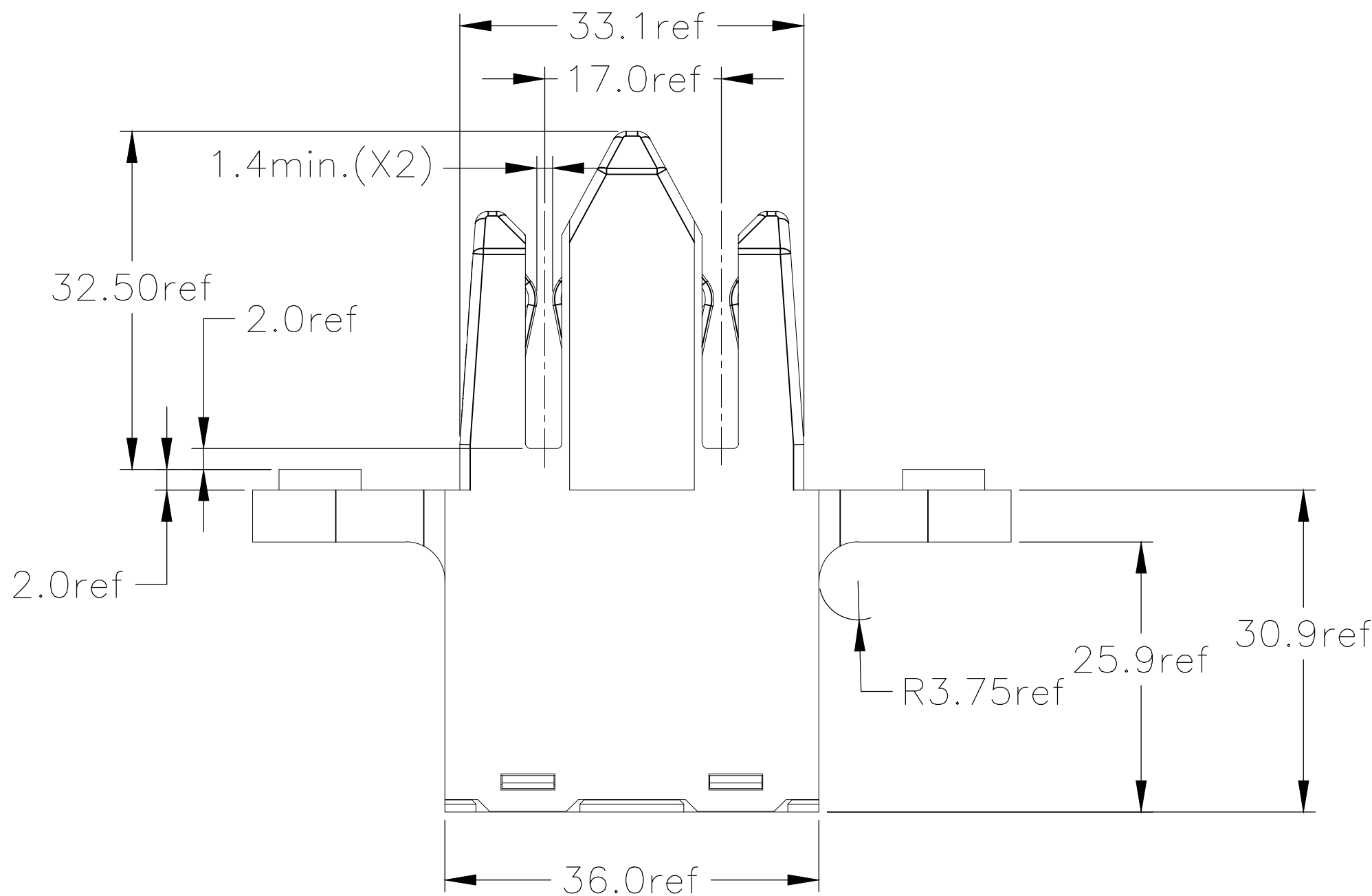
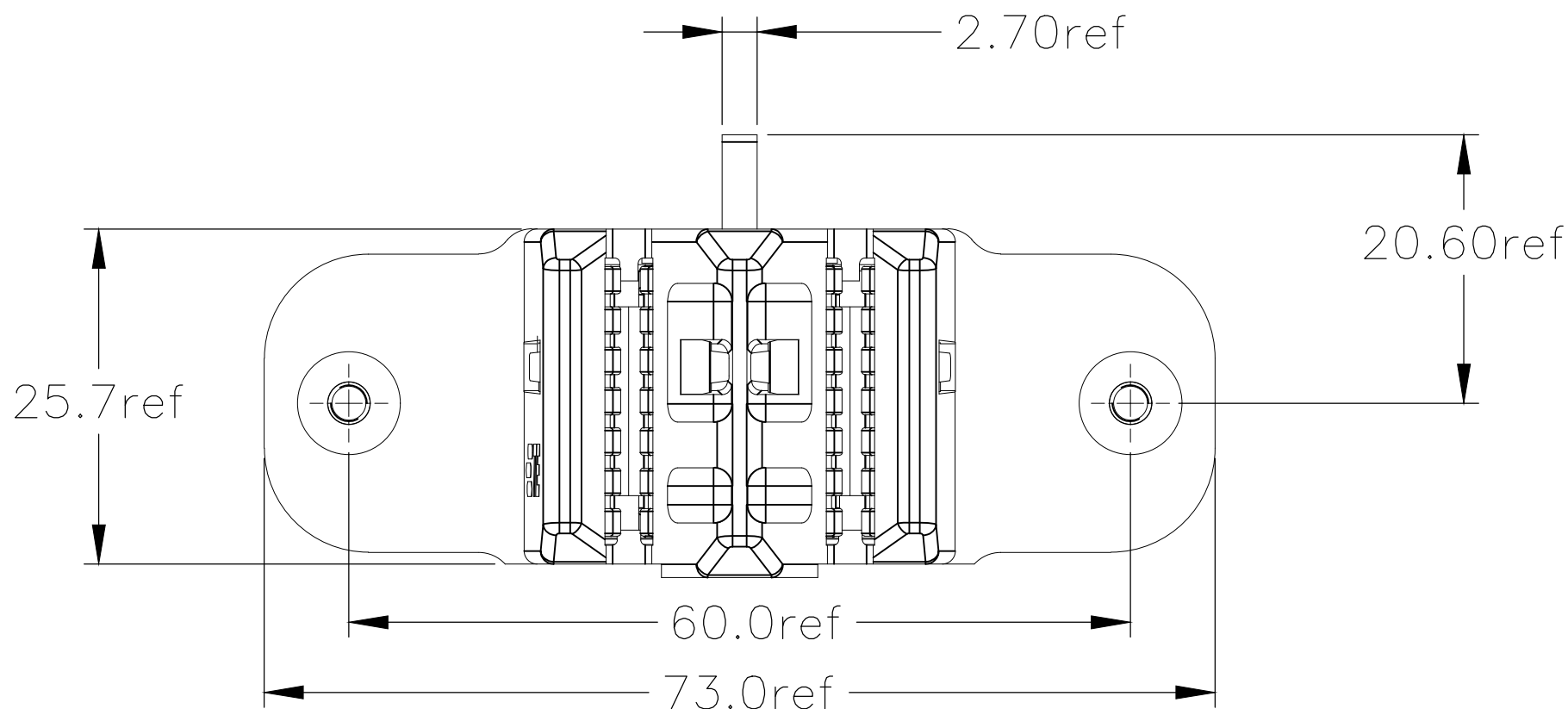
REVISIONS					
P	LTR	DESCRIPTION	DATE	DWN	APVD
-	-	SEE SHEET 1	-	-	-

D

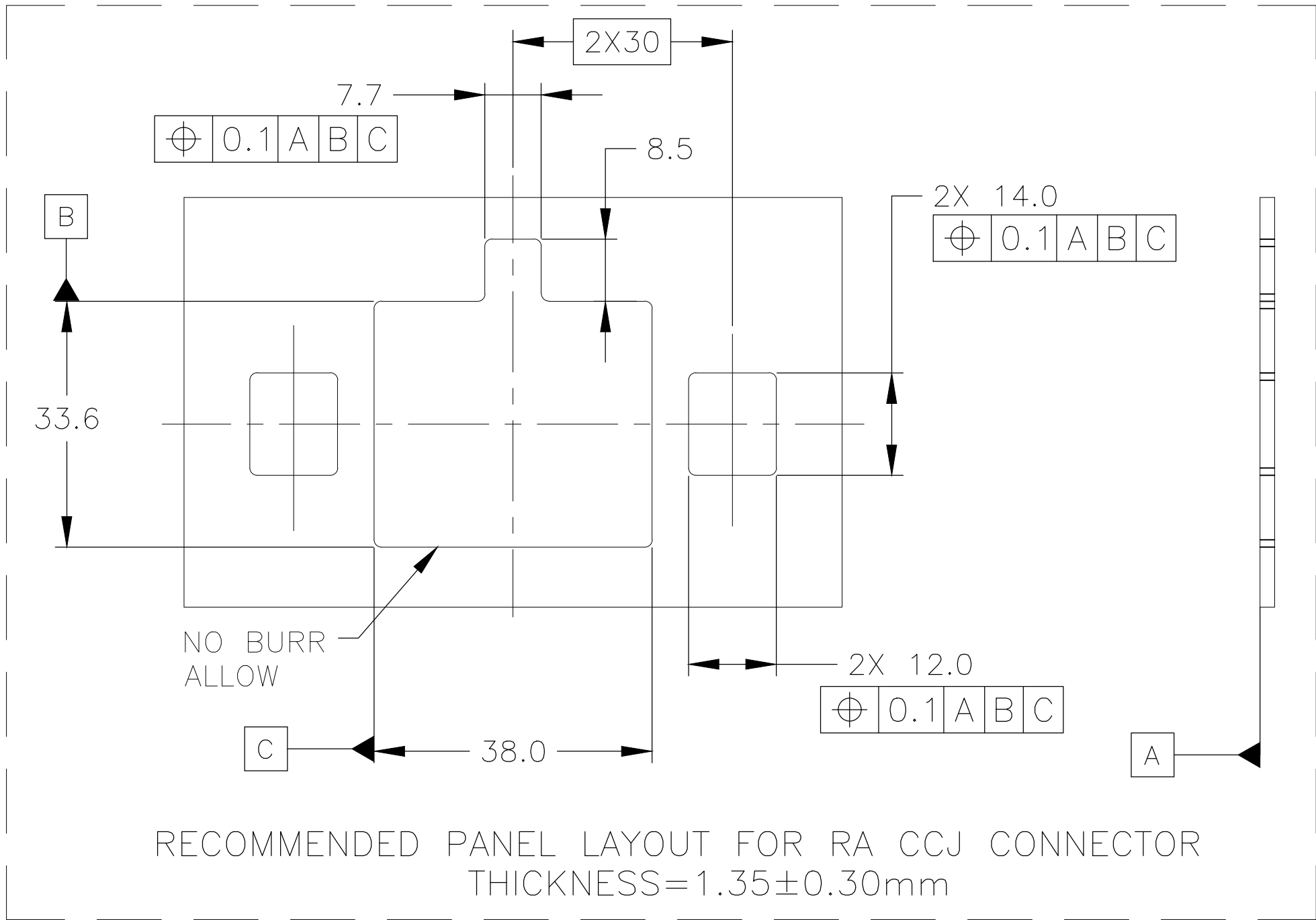
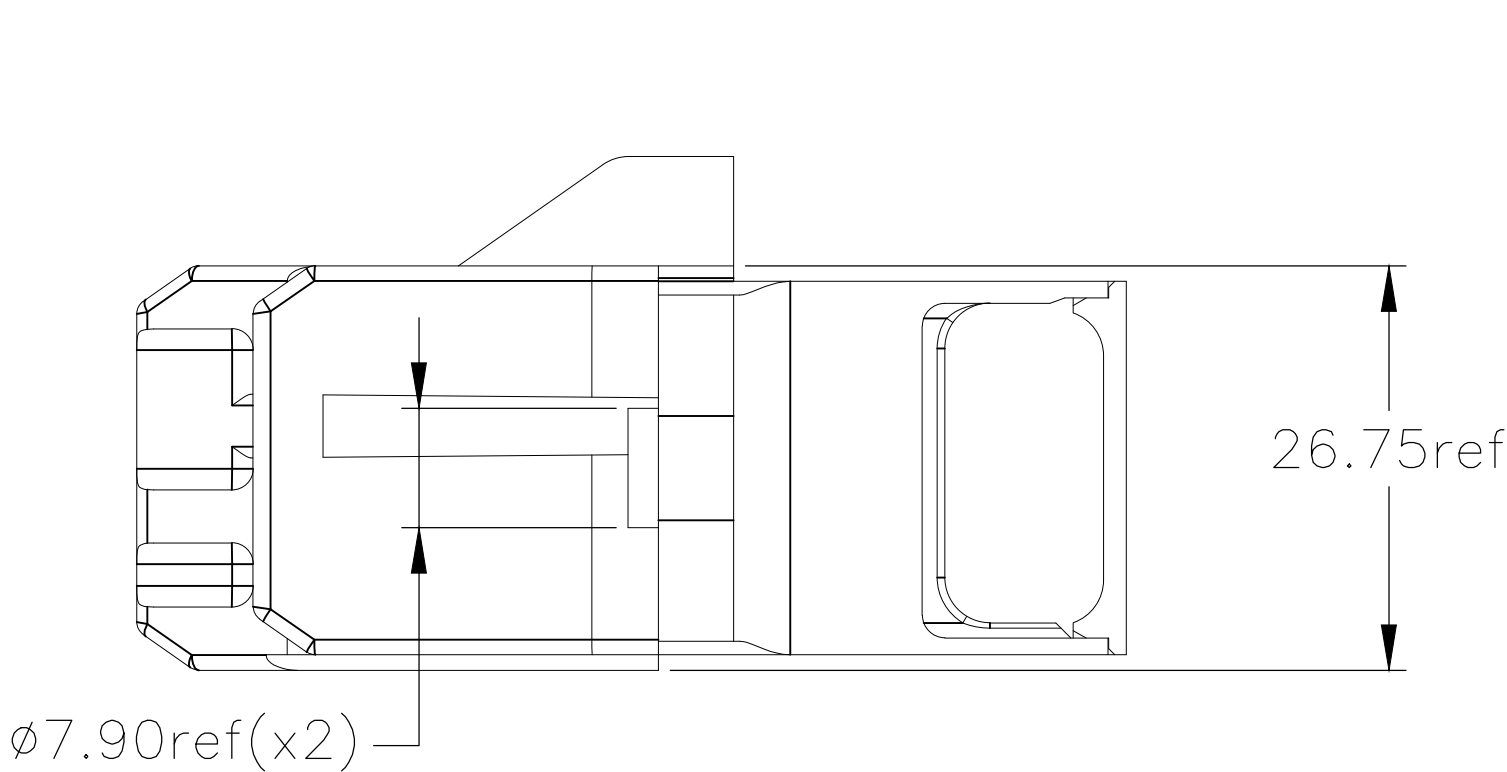
C

B

A



RA CCJ CONNECTOR PROFILE FOR REFERENCE



RECOMMENDED PANEL LAYOUT FOR RA CCJ CONNECTOR
THICKNESS=1.35±0.30mm

THIS DRAWING IS A CONTROLLED DOCUMENT.		DWN ADAM CHEN 24MAY2018	TE Connectivity			
DIMENSIONS: mm		CHK - APVD DAVID ZHANG 24MAY2018				
		PRODUCT SPEC 108-152035	NAME Cable AssY, Site Exit CCJ			
		APPLICATION SPEC 114-152042	SIZE A2			
MATERIAL -		WEIGHT 0	CAGE CODE 00779	DRAWING NO C=2337275	RESTRICTED TO -	
FINISH -		CUSTOMER DRAWING		SCALE N.T.S	SHEET 2 OF 2	REV 3