



Chipsmall Limited consists of a professional team with an average of over 10 year of expertise in the distribution of electronic components. Based in Hongkong, we have already established firm and mutual-benefit business relationships with customers from,Europe,America and south Asia,supplying obsolete and hard-to-find components to meet their specific needs.

With the principle of "Quality Parts,Customers Priority,Honest Operation,and Considerate Service",our business mainly focus on the distribution of electronic components. Line cards we deal with include Microchip,ALPS,ROHM,Xilinx,Pulse,ON,Everlight and Freescale. Main products comprise IC,Modules,Potentiometer,IC Socket,Relay,Connector.Our parts cover such applications as commercial,industrial, and automotives areas.

We are looking forward to setting up business relationship with you and hope to provide you with the best service and solution. Let us make a better world for our industry!



Contact us

Tel: +86-755-8981 8866 Fax: +86-755-8427 6832

Email & Skype: info@chipsmall.com Web: www.chipsmall.com

Address: A1208, Overseas Decoration Building, #122 Zhenhua RD., Futian, Shenzhen, China



"High Frequency Ceramic Solutions"

2.35GHz Balun/Filter Combination

P/N 2345FB39A0050

Detail Specification: 07/03/13

Page 1 of 2

General Specifications

Part Number	2345FB39A0050	Attenuation (dB)	30 min.@ 766~797MHz
Frequency (MHz)	2300 - 2390		20 min.@1532~1594MHz
Unbalanced Impedence	50 Ω		12 min.@2110~2170MHz
Balanced Impedence	50 Ω		29 min.@3066~3186MHz
Insertion Loss	3.2 dB max.		28 min.@3833~3983MHz
Return Loss	11.73 dB min.	Operating & Storage Temp.	-40 to +85°C
Phase Difference	180° ± 10	Reel Quantity	3000
Amplitude Difference	1.5 dB max.	Power Capacity	1 watt max.
		MSL	2 *

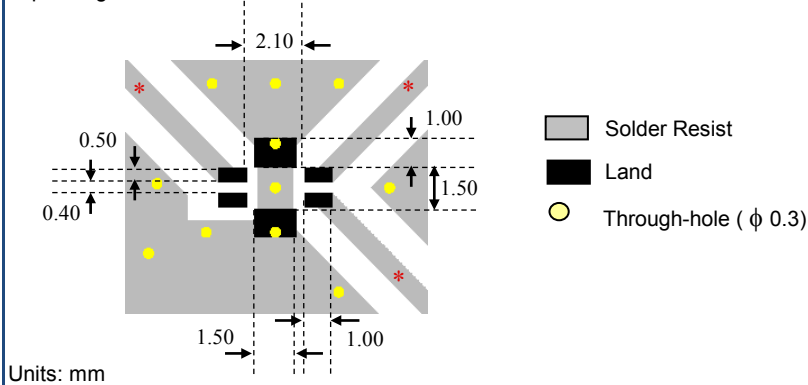
*1 yr shelf life in bag; 1 week shelf life out of bag; Vacuum reseal unused reel

Mechanical Dimensions

	In	mm	
L	0.098 ± 0.008	2.50 ± 0.20	
W	0.079 ± 0.008	2.00 ± 0.20	
T	0.043 ± 0.004	1.10 ± 0.10	
a	0.016 ± 0.008	0.40 ± 0.20	
b	0.031 ± 0.008	0.80 ± 0.20	
c	0.012 +.004/-.008	0.30 +0.1/-0.2	
d	0.075 ± 0.008	1.90 ± 0.20	

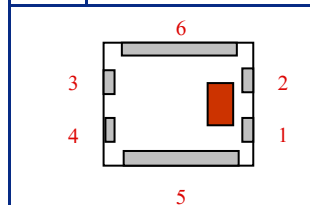
Mounting Considerations

* Line width should be designed to match specified characteristic impedance, depending on PCB material and thickness.



Terminal Configuration

No.	Function
1	Unbalanced Port
2	NC or DC Feed
3	Balanced Port
4	Balanced Port
5	GND
6	GND



Johanson Technology, Inc. reserves the right to make design changes without notice.
All sales are subject to Johanson Technology, Inc. terms and conditions.



"High Frequency Ceramic Solutions"

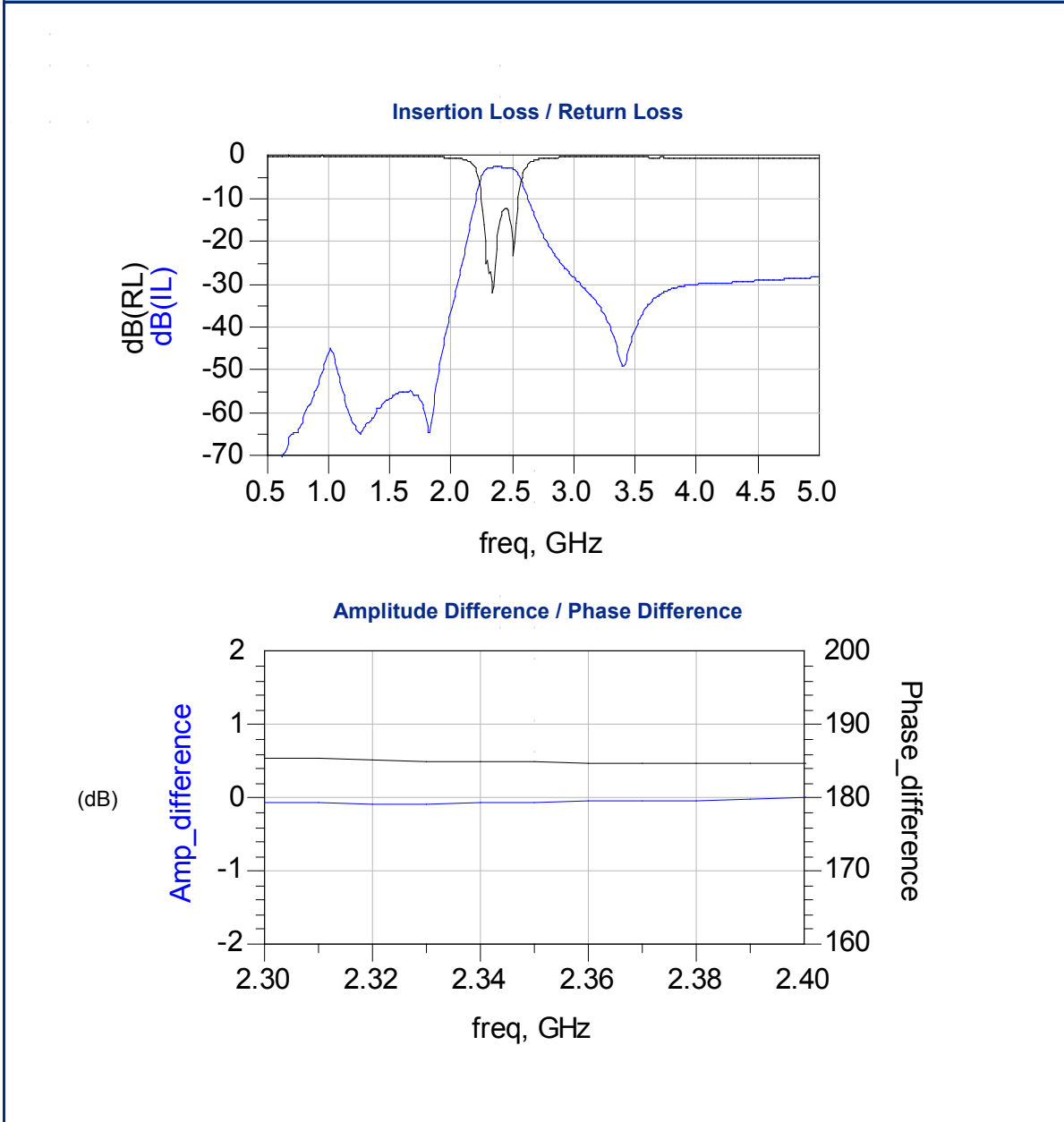
2.35GHz Balun/Filter Combination

P/N 2345FB39A0050

Detail Specification: 07/03/13

Page 2 of 2

Typical Electrical Performance (T=25°C)



Johanson Technology, Inc. reserves the right to make design changes without notice.
All sales are subject to Johanson Technology, Inc. terms and conditions.

