



Chipsmall Limited consists of a professional team with an average of over 10 year of expertise in the distribution of electronic components. Based in Hongkong, we have already established firm and mutual-benefit business relationships with customers from,Europe,America and south Asia,supplying obsolete and hard-to-find components to meet their specific needs.

With the principle of “Quality Parts,Customers Priority,Honest Operation,and Considerate Service”,our business mainly focus on the distribution of electronic components. Line cards we deal with include Microchip,ALPS,ROHM,Xilinx,Pulse,ON,Everlight and Freescale. Main products comprise IC,Modules,Potentiometer,IC Socket,Relay,Connector.Our parts cover such applications as commercial,industrial, and automotives areas.

We are looking forward to setting up business relationship with you and hope to provide you with the best service and solution. Let us make a better world for our industry!



Contact us

Tel: +86-755-8981 8866 Fax: +86-755-8427 6832

Email & Skype: info@chipsmall.com Web: www.chipsmall.com

Address: A1208, Overseas Decoration Building, #122 Zhenhua RD., Futian, Shenzhen, China



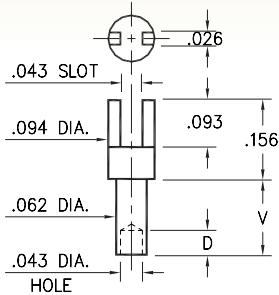
MALE PCB PINS

SOLDER TERMINALS SLOTTED

2315

2315-X-01-XX-00-00-07-0

Swage mount in .067 hole

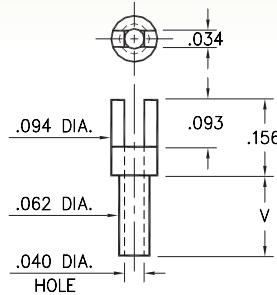


Basic Part Number	Board Thickness	Length V	Depth D
2315-1	.031	.045	.040
2315-2	.062	.094	.062
2315-3	.094	.125	.062
2315-4	.125	.156	.062

2302

2302-X-01-XX-00-00-07-0

Swage mount in .067 hole

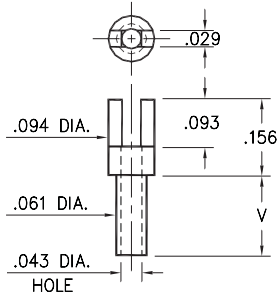


Basic Part Number	Board Thickness	Length V
2302-1	.031	.053
2302-2	.062	.084
2302-3	.094	.115
2302-4	.125	.147

2352

2352-X-01-XX-00-00-07-0

Swage mount in .067 hole

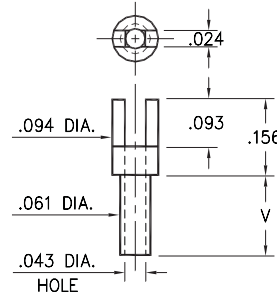


Basic Part Number	Board Thickness	Length V
2352-1	.031	.045
2352-2	.062	.094
2352-3	.094	.125
2352-4	.125	.156

2362

2362-X-01-XX-00-00-07-0

Swage mount in .067 hole

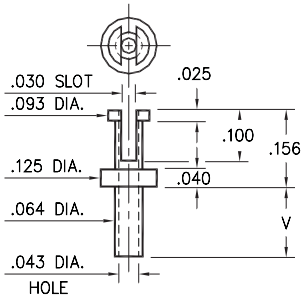


Basic Part Number	Board Thickness	Length V
2362-5	.016	.037
2362-1	.031	.053
2362-2	.062	.084
2362-3	.094	.115
2362-4	.125	.147

2507

2507-X-01-XX-00-00-07-0

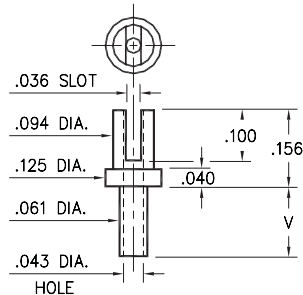
Swage mount in .067 hole



2526

2526-X-01-XX-00-00-07-0

Swage mount in .064 hole



Basic Part Number	Board Thickness	Length V
25XX-1	.031	.053
25XX-2	.062	.084
25XX-3	.094	.115
25XX-4	.125	.147

SPECIFICATIONS:

Pin Material: Brass Alloy 360, 1/2 Hard
(Swage pins are annealed)

Dimensions: Inches

Tolerances On: Lengths: $\pm .005$
Diameters: $\pm .002$
Angles: $\pm 2^\circ$



ORDER CODE: XXXX - X - 01 - XX - 00 - 00 - 07 - 0

BASIC PART #

SPECIFY PIN FINISH:

- 01 200 μ " TIN/LEAD OVER NICKEL
- ◆ 80 200 μ " TIN OVER NICKEL (RoHS)
- ◆ 44 300 μ " SILVER OVER COPPER (RoHS)
- 50 300 μ " ELECTRO-SOLDER
(60/40 SnPb)

