



Chipsmall Limited consists of a professional team with an average of over 10 year of expertise in the distribution of electronic components. Based in Hongkong, we have already established firm and mutual-benefit business relationships with customers from,Europe,America and south Asia,supplying obsolete and hard-to-find components to meet their specific needs.

With the principle of “Quality Parts,Customers Priority,Honest Operation,and Considerate Service”,our business mainly focus on the distribution of electronic components. Line cards we deal with include Microchip,ALPS,ROHM,Xilinx,Pulse,ON,Everlight and Freescale. Main products comprise IC,Modules,Potentiometer,IC Socket,Relay,Connector.Our parts cover such applications as commercial,industrial, and automotives areas.

We are looking forward to setting up business relationship with you and hope to provide you with the best service and solution. Let us make a better world for our industry!



Contact us

Tel: +86-755-8981 8866 Fax: +86-755-8427 6832

Email & Skype: info@chipsmall.com Web: www.chipsmall.com

Address: A1208, Overseas Decoration Building, #122 Zhenhua RD., Futian, Shenzhen, China





Raspberry Pi Model A+ Case Lid - Clear

PRODUCT ID: 2362



Raspberry Pi Model A+ Case Lid - Purple

PRODUCT ID: 2364



Raspberry Pi Model A+ Case Lid - Red

PRODUCT ID: 2366



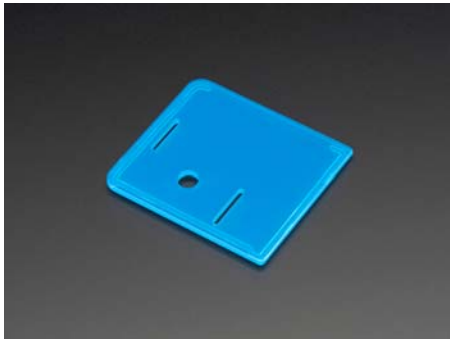
Raspberry Pi Model A+ Case Lid - Orange

PRODUCT ID: 2368



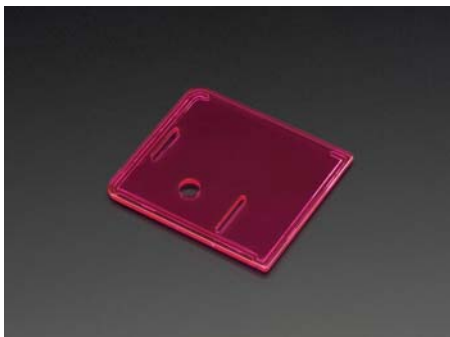
Raspberry Pi Model A+ Case Lid - Blue

PRODUCT ID: 2370



Raspberry Pi Model A+ Case Lid - Pink

PRODUCT ID: 2372



DESCRIPTION

Now that we have The Single Greatest Raspberry Pi Model A+ Case Ever - we decided to make it even better by adding COLORS!!!!

Mix and match snap-on lids and bases to form your favorite combinations. Buy one base then match different colored lids to your room or outfit. Or buy all of them so that you can adjust your Pi A+'s case based on your mood, your favorite sports team, or even your aura.

With 49 unique combinations, the possibilities are fun, colorful and (almost) endless!

This is just the lid of the Raspberry Pi Model A+ case. Check out our different colored bases.

This enclosure was designed by Mike Doell. It's made of ultra-durable, super-glossy polycarbonate, and is both good looking and tough enough to toss into your bookbag or toolbox. It has slim openings for all your cables, an easy-to-remove beveled slot for your Micro SD card, slots for both your Pi Camera and upcoming Display, and a space for your GPIO cable to extend out from the Pi.

The Pi snaps into the base and the lid fits snugly onto the top. If you want to break out your Pi you can use your case without the lid and add hats to your A+ with ease.

This case works for the Raspberry Pi Model A+ only. It does not work for the Raspberry Pi Model A, B, B+, or Pi 2.

No Raspberry Pi included. This is just the lid of the case and no base is included.

Technical Details

Lid Dimensions: 73mm x 65mm x 4mm / 2.9" x 2.6" x 0.2"

Lid Weight: 15g

