



Chipsmall Limited consists of a professional team with an average of over 10 year of expertise in the distribution of electronic components. Based in Hongkong, we have already established firm and mutual-benefit business relationships with customers from,Europe,America and south Asia,supplying obsolete and hard-to-find components to meet their specific needs.

With the principle of “Quality Parts,Customers Priority,Honest Operation,and Considerate Service”,our business mainly focus on the distribution of electronic components. Line cards we deal with include Microchip,ALPS,ROHM,Xilinx,Pulse,ON,Everlight and Freescale. Main products comprise IC,Modules,Potentiometer,IC Socket,Relay,Connector.Our parts cover such applications as commercial,industrial, and automotives areas.

We are looking forward to setting up business relationship with you and hope to provide you with the best service and solution. Let us make a better world for our industry!



## Contact us

Tel: +86-755-8981 8866 Fax: +86-755-8427 6832

Email & Skype: info@chipsmall.com Web: www.chipsmall.com

Address: A1208, Overseas Decoration Building, #122 Zhenhua RD., Futian, Shenzhen, China



DESIGNED & DIMENSIONED  
IN MILLIMETERS [INCHES]

**BNC7T-J-P-XX-RA-BH1**

GENDER  
-J: JACK

TYPE  
-P: PCB

TERMINATION  
-BH1: BULKHEAD THROUGH HOLE

ORIENTATION  
-RA: RIGHT ANGLE

PLATING SPECIFICATION  
-HN: HEAVY GOLD/NICKEL  
(SUB-BNC7T-J-P-HN-RA-BH1)  
(BTNC-NUT-003-N)  
(BTNC-LWAS-001-N)

**F** \*-MN: MEDIUM GOLD/NICKEL  
(SUB-BNC7T-J-P-GN-RA-BH1)  
(BTNC-NUT-003-N)  
(BTNC-LWAS-001-N)

-GN: GOLD/NICKEL  
(SUB-BNC7T-J-P-GN-RA-BH1)  
(BTNC-NUT-003-N)  
(BTNC-LWAS-001-N)

DO NOT  
SCALE FROM  
THIS PRINT

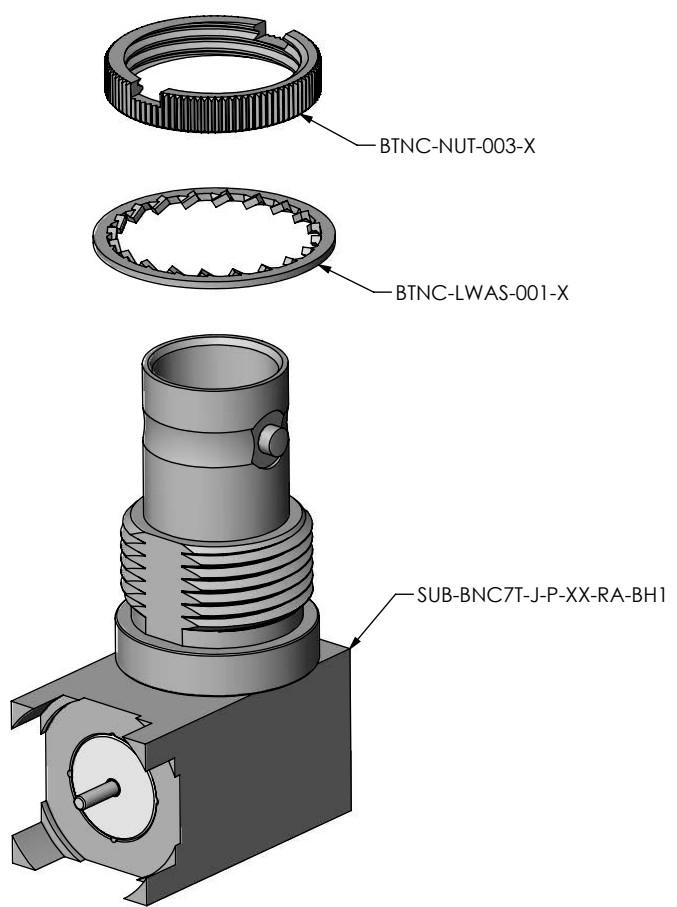
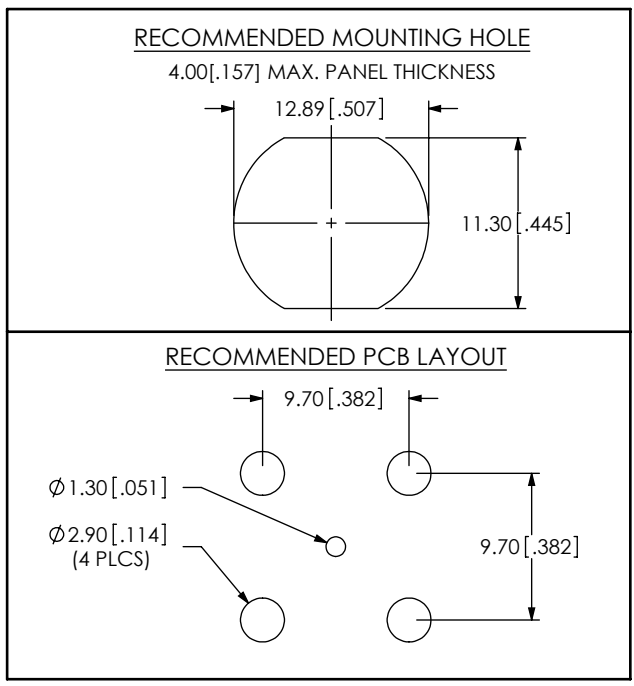


FIG.1  
BNC7T-J-P-XX-RA-BH1 SHOWN



- NOTES:
1.  $\text{\textcircled{C}}$  REPRESENTS A CRITICAL DIMENSION.
  2. FABRICATED PARTS MUST BE FREE OF SCRATCHES, TOOL MARKS, ETC.
  3. SUPPLIER TO REMOVE BURRS.
  4. RoHS COMPLIANT.
  5. COMPONENT PLATING DESIGNATIONS:  
-H: .000030" MIN. GOLD OVER .000050" (MIN) NICKEL.  
-G: .000010" MIN. GOLD OVER .000050" MIN. NICKEL  
-N: .000100" MIN. NICKEL.
  6. ASSEMBLY PLATING DESIGNATIONS:  
-HN: (CENTER CONTACT)-H  
(OUTER CONTACT) -N  
(REMAINING METAL PARTS) -N  
-MN, -GN:(CENTER CONTACT)-G  
(OUTER CONTACT) -N  
(REMAINING METAL PARTS) -N
  7. NOTE DELETED. **F**

c:\enterprise\aut\DWG\MISC\MKTG\BNC7T-J-P-XX-RA-BH1-MKT.SLDDRW

UNLESS OTHERWISE SPECIFIED DIMENSIONS ARE IN MILLIMETERS

TOLERANCES ARE:

DÉCIMALS	ANGLES
.X: ±0.3 [0.1]	2°
.XX: ±0.13 [0.05]	
.XXX: ±0.051 [0.020]	

**PROPRIETARY NOTE**

THIS DOCUMENT CONTAINS INFORMATION CONFIDENTIAL AND PROPRIETARY TO SAMTEC, INC. AND SHALL NOT BE REPRODUCED OR TRANSFERRED TO OTHER DOCUMENTS OR DISCLOSED TO OTHERS OR USED FOR ANY PURPOSE OTHER THAN THAT WHICH IT WAS OBTAINED WITHOUT THE EXPRESSED WRITTEN CONSENT OF SAMTEC, INC.

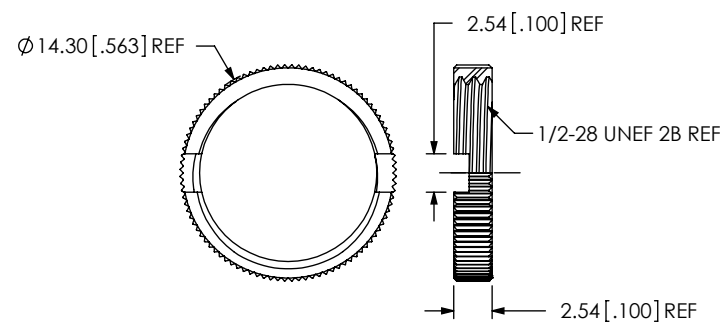
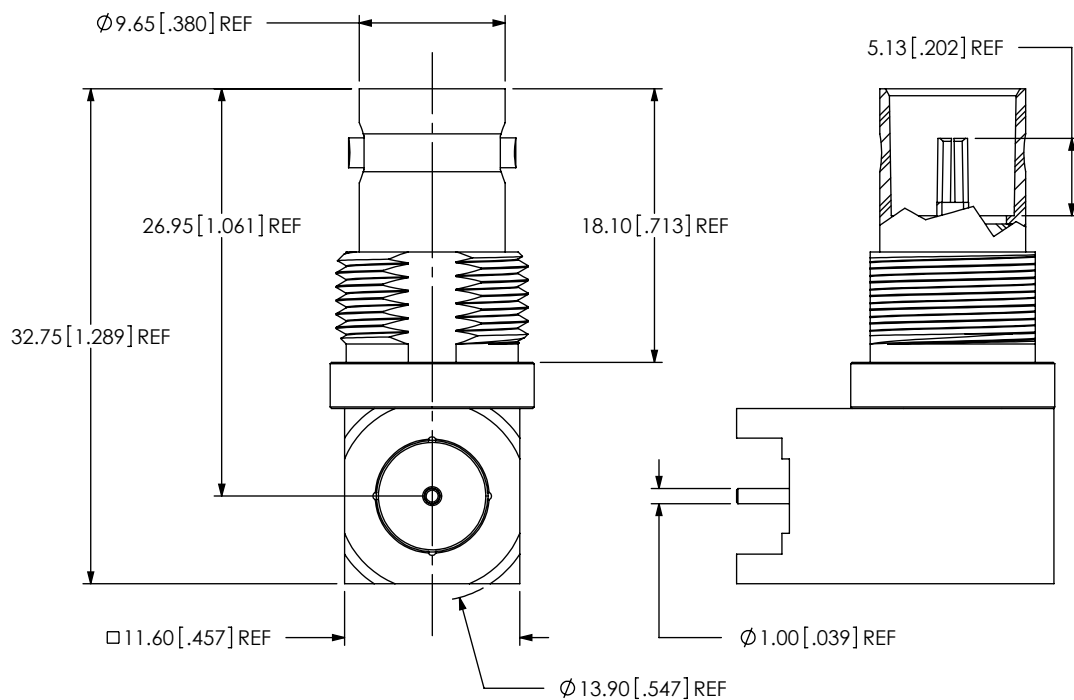
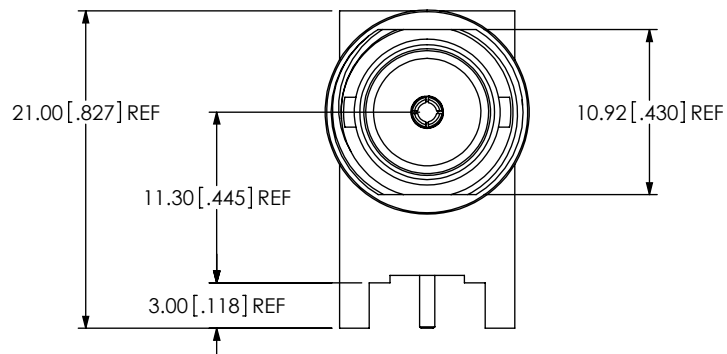
520 PARK EAST BLVD, NEW ALBANY, IN 47150  
PHONE: 812-944-6733 FAX: 812-948-5047  
e-Mail: info@SAMTEC.com code: 55322

**MATERIAL:** DO NOT SCALE DRAWING SHEET SCALE: 2:1  
SHELL, BODY, NUT, WASHER: BRASS  
CONTACT: COPPER ALLOY  
DIELECTRIC: PTFE

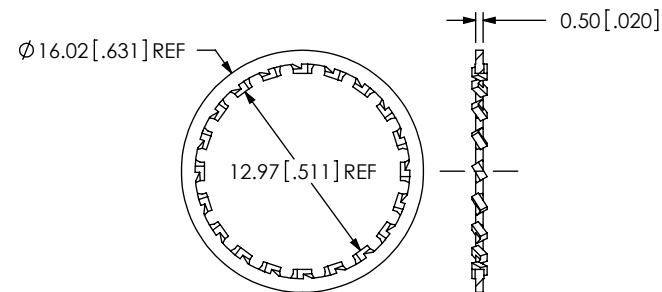
DESCRIPTION:  
TRUE 75 OHM RIGHT ANGLE JACK ASSEMBLY

DWG. NO.  
**BNC7T-J-P-XX-RA-BH1**





SAMTEC PART NUMBER	ITEM
BTNC-NUT-003-X	KNURLED NUT



SAMTEC PART NUMBER	ITEM
BTNC-LWAS-001-X	LOCKWASHER

c:\enterprise\vauf\DWG\MISC\MKTG\BNC7T-J-P-XX-RA-BH1-MKT.SLDDRW

**PROPRIETARY NOTE**  
 THIS DOCUMENT CONTAINS INFORMATION  
 CONFIDENTIAL AND PROPRIETARY TO  
 SAMTEC, INC. AND SHALL NOT BE REPRODUCED  
 OR TRANSFERRED TO OTHER DOCUMENTS OR  
 DISCLOSED TO OTHERS OR USED FOR ANY  
 PURPOSE OTHER THAN THAT WHICH IT WAS  
 OBTAINED WITHOUT THE EXPRESSED WRITTEN  
 CONSENT OF SAMTEC, INC.



520 PARK EAST BLVD, NEW ALBANY, IN 47150  
 PHONE: 812-944-6733 FAX: 812-948-5047  
 e-Mail: info@SAMTEC.com code: 55322

DO NOT SCALE DRAWING

SHEET SCALE: 2:1

DESCRIPTION:  
 TRUE 75 OHM RIGHT ANGLE JACK ASSEMBLY

DWG. NO.  
**BNC7T-J-P-XX-RA-BH1**

BY: G. HERMAN 09-07-2010 SHEET 2 OF 2

SAMTEC PART NUMBER	ITEM
SUB-BNC7T-J-P-XX-RA-BH1	SUB ASSEMBLY