



Chipsmall Limited consists of a professional team with an average of over 10 year of expertise in the distribution of electronic components. Based in Hongkong, we have already established firm and mutual-benefit business relationships with customers from,Europe,America and south Asia,supplying obsolete and hard-to-find components to meet their specific needs.

With the principle of “Quality Parts,Customers Priority,Honest Operation,and Considerate Service”,our business mainly focus on the distribution of electronic components. Line cards we deal with include Microchip,ALPS,ROHM,Xilinx,Pulse,ON,Everlight and Freescale. Main products comprise IC,Modules,Potentiometer,IC Socket,Relay,Connector.Our parts cover such applications as commercial,industrial, and automotives areas.

We are looking forward to setting up business relationship with you and hope to provide you with the best service and solution. Let us make a better world for our industry!



Contact us

Tel: +86-755-8981 8866 Fax: +86-755-8427 6832

Email & Skype: info@chipsmall.com Web: www.chipsmall.com

Address: A1208, Overseas Decoration Building, #122 Zhenhua RD., Futian, Shenzhen, China



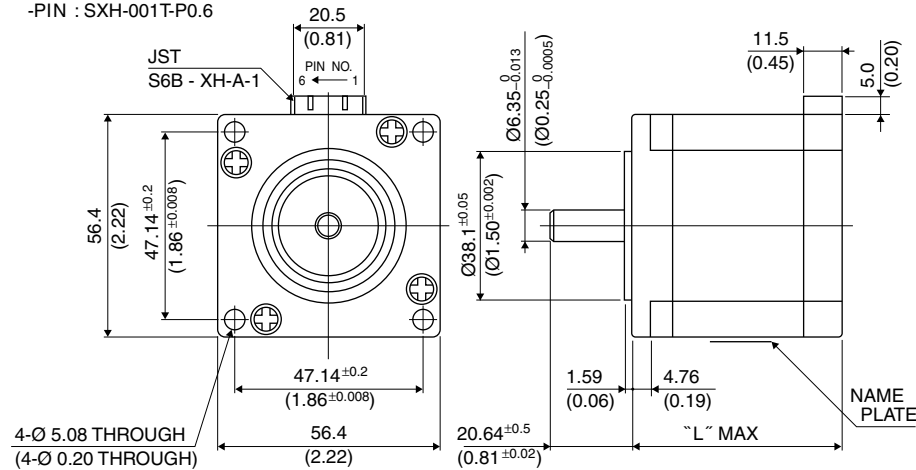
56□ 1.8°

23KM-K

1.8°

■ 外観図 Outline

- LEAD WIRE SIDE
- HSG: XHP-6
- PIN : SXH-001T-P0.6



Hybrid

*シャフト径Ø8-^{0.013}mmも対応可能です。 *Shaft diameter of Ø8-^{0.013} mm is also available.

UNIT: mm (inch)

結線表 PIN NO. vs. PHASE

相 (PHASE)	A	A COM	\bar{A}	B	B COM	\bar{B}
ピン番号 (PIN NO.)	1	2	3	4	5	6

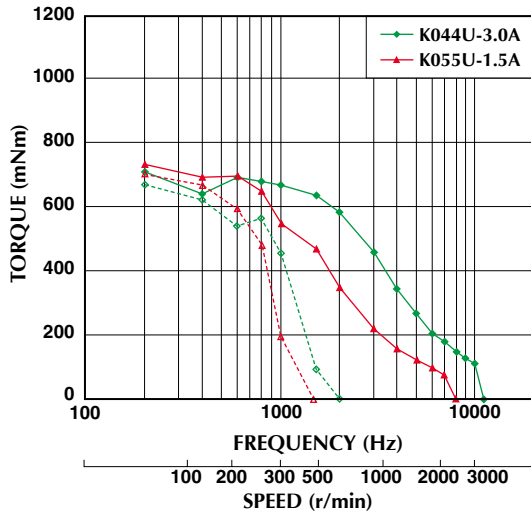
	"L"
23KM-K2**	42 (1.65)
23KM-K3**	50 (1.97)
23KM-K0**	54 (2.13)
23KM-K1**	66 (2.60)
23KM-K7**	76 (2.99)

■ 仕様 Specifications

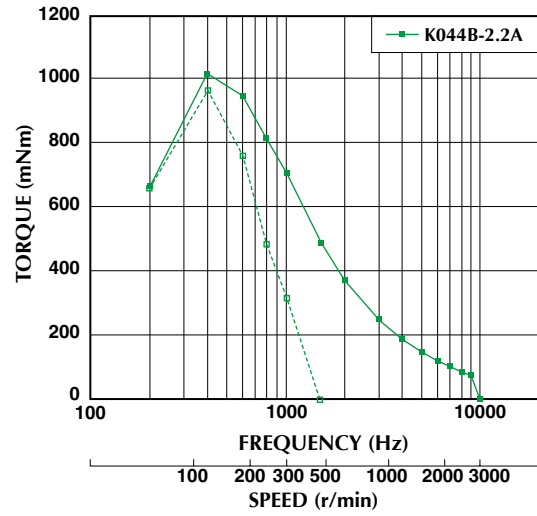
型式	ステップ角	ドライブ方式	定格電流	巻線抵抗	ホールディングトルク	インダクタンス	ロータイナーシャ	ディテントトルク	質量
Model	Step Angle	Drive Sequence	Rated Current	Resistance	Holding Torque	Inductance	Rotor Inertia	Detent Torque	Mass
	(deg)		(A)	(Ohms)	(mNm)	(mH)	(g·cm ²)	(mNm)	(g)
23KM-K044U	1.8	UNI-POLAR	3.0	0.85	760	1.8	200	34	680
23KM-K055U	1.8	UNI-POLAR	1.5	3.3	760	6.7	200	34	680
23KM-K144U	1.8	UNI-POLAR	3.0	1.0	1050	2.2	290	49	900
23KM-K155U	1.8	UNI-POLAR	1.5	3.9	1050	8.0	290	49	900
23KM-K249U	1.8	UNI-POLAR	2.0	1.3	420	1.9	120	20	470
23KM-K255U	1.8	UNI-POLAR	1.5	2.3	420	3.6	120	20	470
23KM-K349U	1.8	UNI-POLAR	2.0	1.5	650	2.9	180	29	590
23KM-K355U	1.8	UNI-POLAR	1.5	2.9	650	5.5	180	29	590
23KM-K744U	1.8	UNI-POLAR	3.0	1.15	1200	2.7	360	50	1050
23KM-K755U	1.8	UNI-POLAR	1.5	4.6	1200	10.2	360	50	1050
23KM-K044B	1.8	BI-POLAR	2.2	1.7	1000	7.2	200	34	680
23KM-K144B	1.8	BI-POLAR	2.1	2.0	1250	8.7	290	49	900
23KM-K249B	1.8	BI-POLAR	1.4	2.4	540	7.7	120	20	470
23KM-K349B	1.8	BI-POLAR	1.4	3.0	800	11.8	180	29	590
23KM-K744B	1.8	BI-POLAR	2.0	2.3	1500	10.6	360	50	1050

■ トルク・スピード特性 Torque/Speed Characteristics

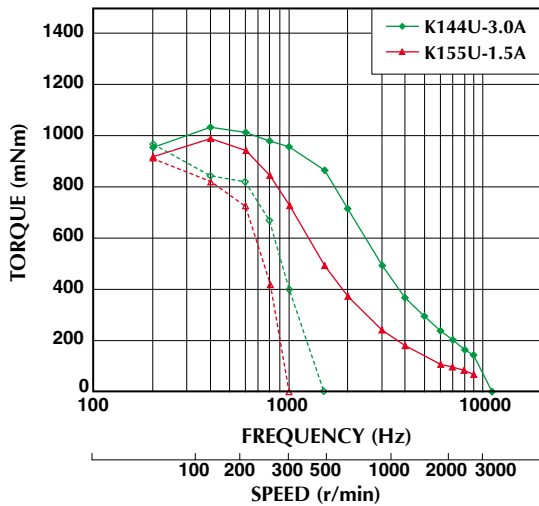
Model No: 23KM-K044U,K055U
Driver: Chopper Dual
Supply Voltage: 24.0 (Volt)



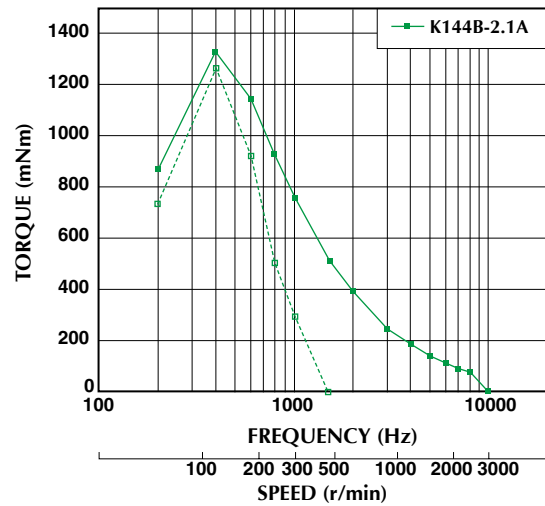
Model No: 23KM-K044B
Driver: Chopper Dual
Supply Voltage: 24.0 (Volt)



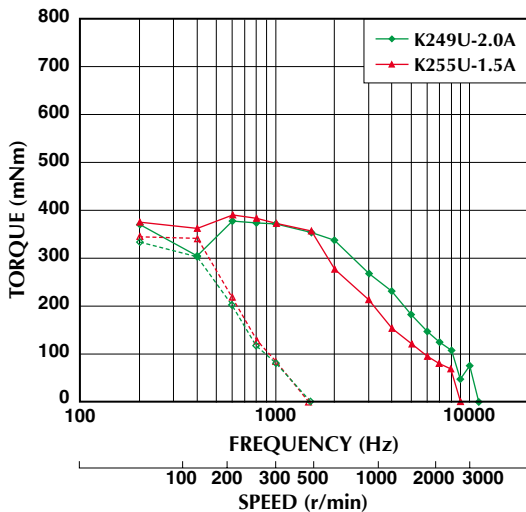
Model No: 23KM-K144U,K155U
Driver: Chopper Dual
Supply Voltage: 24.0 (Volt)



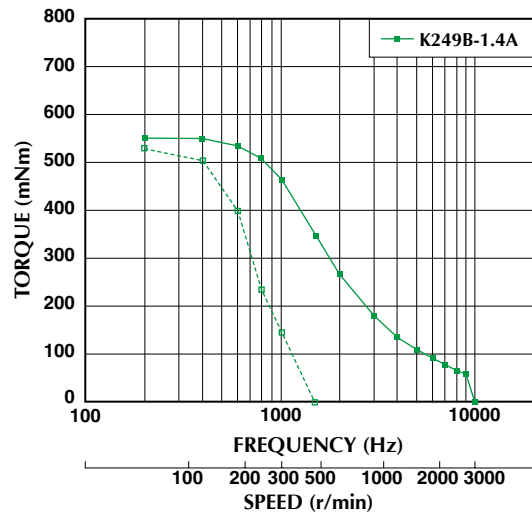
Model No: 23KM-K144B
Driver: Chopper Dual
Supply Voltage: 24.0 (Volt)



Model No: 23KM-K249U,K255U
Driver: Chopper Dual
Supply Voltage: 24.0 (Volt)



Model No: 23KM-K249B
Driver: Chopper Dual
Supply Voltage: 24.0 (Volt)



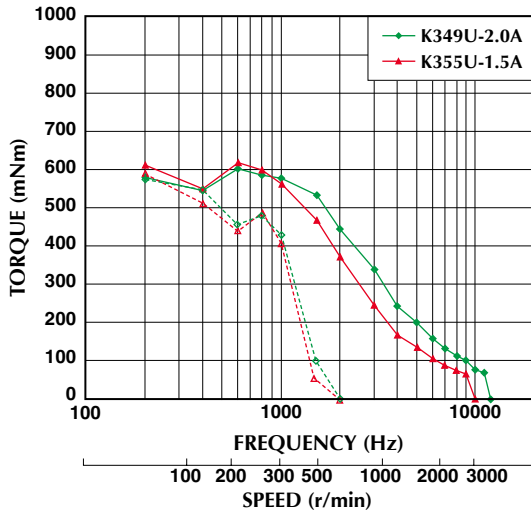
■ トルク特性は当社測定による参考データで、保証値ではありません。また、条件が変化すると、特性が変化する場合があります。
■ Torque/Speed characteristics are for reference only and it may change when operated at different drive conditions.

■ このカタログに掲載している製品の性能及び仕様は、改良の為予告なく変更することがありますのでご了承ください。
■ Specifications are subject to change without notice.

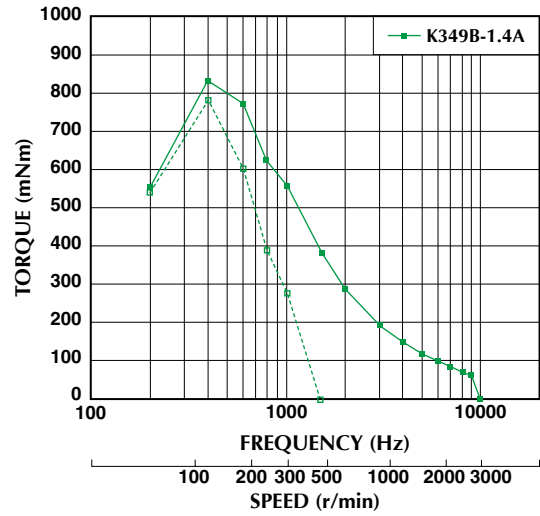
— : PULL OUT
- - - : PULL IN

■ トルク・スピード特性 Torque/Speed Characteristics

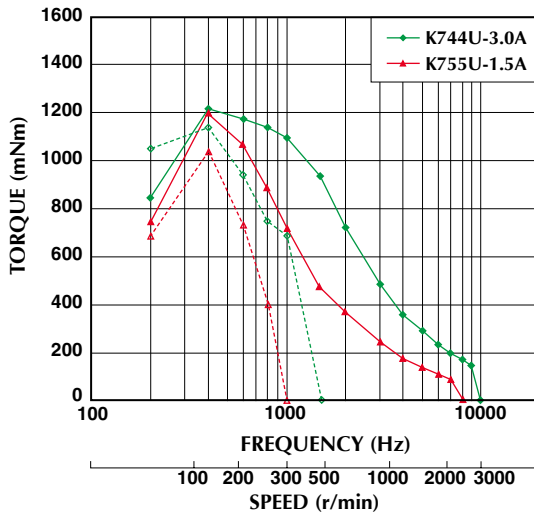
Model No: 23KM-K349U,K355U
 Driver: Chopper Dual
 Supply Voltage: 24.0 (Volt)



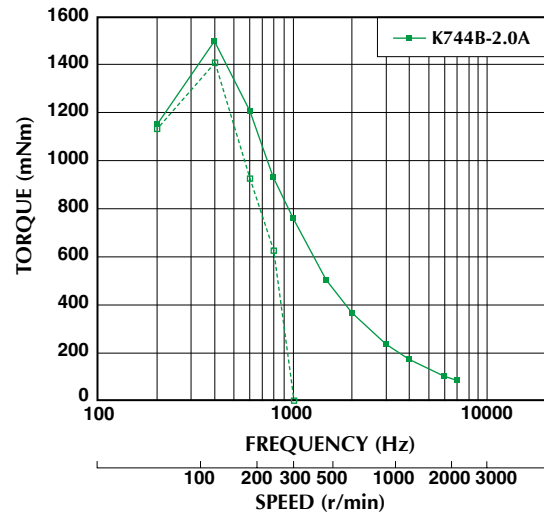
Model No: 23KM-K349B
 Driver: Chopper Dual
 Supply Voltage: 24.0 (Volt)



Model No: 23KM-K744U,K755U
 Driver: Chopper Dual
 Supply Voltage: 24.0 (Volt)



Model No: 23KM-K744B
 Driver: Chopper Dual
 Supply Voltage: 24.0 (Volt)



■ トルク特性は当社測定による参考データで、保証値ではありません。また、条件が変化すると、特性が変化する場合があります。
 ■ Torque/Speed characteristics are for reference only and it may change when operated at different drive conditions.

■ このカタログに掲載している製品の性能及び仕様は、改良の為予告なく変更することがありますのでご了承ください。
 ■ Specifications are subject to change without notice.

— : PULL OUT
 - - - : PULL IN